

## Annual Report 2016-17

This format outlines the annual reports to be published by all colleges in the Madhya Pradesh on their websites, by October 31<sup>st</sup> of each year. Part I is intended as a guide and colleges are free to alter the contents and format as they see fit. Part II, the Appendix (Institutional Performance Data and Financial Reports), is mandatory and colleges are required to report all data as per the attached format and instructions.

Important Information –

- Name of the college – Govt. Vivekananda College Maihar
- Place of the college – satna road maihar
- District – satna (m.p.)485771
- Division - rewa
- Year of establishment of college - 1973
- Name and Contact details( Mail id , Phone ) of Principal -07674-232139,gvc.p.g.college.maihar@gmail.com
- Name , Post and Contact details of ( mail id, Phone no.) of Reporting In charge –Dr.P.L. verma , Asstt. Prof. physics mail [id-plverma2010@gmail.com](mailto:pd-plverma2010@gmail.com) phone.no. 8085931059
- Date of report submission –
- 
- 

### Part I

#### The Principal's Report (2 pages)- I Principal's Annual Report for The Year2016-17

I Take Great pleasure in presenting the annual report of Govt Vivekananda college Maihar about its development and achievement. This year was marked with many events. This can be attributed to the dedication and team spirit of the staff and students.

Govt vivekananda college Maihar was started in the year 1973 by a group of social visionaries and was taken over by Government in 1986. At Present this college has four faculties of Art,Science, Commerce and Home-science. There are approximately 3000 students studying in 15 different departments U.G. and P.G. courses are run here in different subjects Research facility is available in commerce department and in sociology department and science department.

#### Achievement

This college imparts quality education to the under privileged sections of society. It encourages its students to pursue and complete their higher education. Parents express their happiness and satisfaction over the performances of their wards.

#### New Courses

M.A. English Literature,B.A. in Geography, Psychology, Sanskrit,Music, and History have been started recently.

**Results** Our students of Both U.G. and P.G. Section always present good results

#### Staff Achievements:

Professor Arun Kumar Gautam has been appointed Dean faculty of commerce in A.P.S.University, it is a matter of pride for this college .

#### Research activities

14 Members of the teaching staff are doctorate Ten of them are registered as guides in A.P.S.University, Rewa.

#### Skill development/career counseling

Under Vivekananda career counseling cell proper guidance is done for students via workshops and invite guests talks.

#### Student Activity :

Like every year this year also students activities were organised under 'Yuva Utsav'.

#### Sports Achievement :

In chess, cricket And wrestling students represented the college at national level .better efforts are also done for developing self defence among girls via judo training provided to them at campus.

**NCC :** Girls units of NCC is performing well in this college girls have represented their units at national level camps and have won prizes in debate and drama both. All efforts are being made to give all facilities.

**NSS:-** College has NSS units of both boys and girls as well both units regularly arrange camps in rural areas and serve the society. Both units participate in plantation programmes arranged by college and district administration as well . So all efforts are being made for development of quality of education and other activities for welfare of students.

Next year we are planning to demand PG classes for geography and home science students. We will try to get permission for research class in different department.

The college also provides skill oriented programmes through the Vivekananda Career Guidance Cell which regularly interacts with industries and other professional bodies to cater to the demand of the students. The curriculum has also been enriched by integrating with it gender sensitization programs like Mahila Sashakati Karan, Beti Bachao, environmental issues like climate change, global warming, matter related to human rights and role of information and communication technology. The inculcation of monitors evaluates the quality of academic and non-academic activities through a feedback .Moral and ethical values and community service is an integrated part of NCC and NSS programmes. College system works on various levels: students, parents/ guardians, community members and alumni. The institute works on a vision, mission and objective which upholds virtue of leadership, inquisitiveness, research, leading to overall excellence in higher education. The institute duly follows the academic calendar by involving innovative pedagogy, educational excursion and successfully executes it. Curriculum has been enriched with various methodology, tools, project work and internship programme. The college interacts with its beneficiaries and academic bodies for the effective implementation of the curriculum.

1

The college is trying its best to improve its academic and extra curricular activities to enhance all-round performances of the students. We have been able to get approval of department of Home science and approval for M.A. in English. History, Geography Music, Sanskrit ,Psychology .. Our student have participated at national level in sports activities like kusti and chess and specially the girls student have been able to represent and with awards in NCC camps at national level. For cultural advancement of students, we have organised classical dance performance with co-operation with spicmac.

Next year we are planning to demand PG classes for geography and home science students. We will try to get permission for research class in different department.

The college also provides skill oriented programmes through the Vivekananda Career Guidance Cell which regularly interacts with industries and other professional bodies to cater to the demand of the students. The curriculum has also been enriched by integrating with it gender sensitization programs like Mahila Sashakati Karan, Beti Bachao, environmental issues like climate change, global warming, matter related to human rights and role of information and communication technology. The inculcation of monitors evaluates the quality of academic and non-academic activities through a feedback .Moral and ethical values and community service is an integrated part of NCC and NSS programmes. College system works on various levels: students, parents/ guardians, community members and alumni. The institute works on a vision, mission and objective which upholds virtue of leadership, inquisitiveness, research, leading to overall excellence in higher education. The institute duly follows the academic calendar by involving innovative pedagogy, educational excursion and successfully executes it. Curriculum has been enriched with various methodology, tools, project work and internship programme. The college interacts with its beneficiaries and academic bodies for the effective implementation of the curriculum.

## 2. Overview (1 page)

(i) Vision, Mission and Objectives of the college & campus area

### **VISION**

**To equip students with quality education, aptitude and skill to face the global as well as local challenges of life and nurture the innate talents of the students.**

### **MISISON**

- Provide equal opportunity to access quality education in higher studies.
- Initiate policies and program for strengthening research and innovations.
- To provide an opportunity to achieve the right to live with dignified manner.
- To develop human potential to its fullest extent to make capable to get employment

(i) Brief introduction of the college (including the status (Govt. / Lead/ Constituent/ Affiliated/ Private), Parent University, UGC recognition, CPE status, etc), location

- |                             |  |
|-----------------------------|--|
| • Name of College           | ➤ Govt. Vivekanand College Maihar                            |
| • Status of the College     | ➤ Government   |
| • Affiliation               | ➤ Awadhesh Pratap Singh University Rewa                      |
| • UGC recognition           | ➤ Recognized by UGC under section 2 'f' (1986) 12 'B' (1995) |
| • NAAC Status               | ➤ Applied  |
| • Location                  | ➤ Semi Urban   |
| • Situation                 | ➤ Ballabh Nager Maihar                                       |
| • Type of the College       | ➤ Co- education  |
| • Area                      | ➤ 32687.2 Sq.Meter   |
| • Built up area in sq. mts. | ➤ 7342. Sq.Meter   |

(ii) History of the college with significant milestone

**Govt.Vivekanand P.G.College Maihar** is one of the least facilitated colleges with large number of students in M.P. which facilitates and promotes studies, research and extension activities in the emerging areas in the discipline of Arts, Commerce and Science,

This college is situated at Maihar which is a famous religious and industrial place. It is just three k.ms away from Maihar railway station and is nicely connected with Maihar-Satna road. The college is Government (multi faculty) PG College, situated in a semi urban area, having both boys and girls as its constituents This College was established in the year 1973 and was subsequently made a Govt. College in 1986. In 1995 post graduate classes in arts, science and commerce faculty were started and proved tremendously beneficial to students. It is affiliated to A.P.S. University, Rewa and is the preferred exam center for different university examinations. It is recognized under section 2f and 12b of UGC act and hence has been receiving developmental grants from UGC.

The GER in our institution has increased substantially during last 5 years yet it is so far below those of other colleges of M.P. The GER in some disadvantage group like girls(58%) and OBC(49%) are more higher than state (41%) and(37%) respectively, but the other marginal groups like SC and ST's GER is less than state ratio. At present we are filling our seats nearly one third of our allotted capacity. Our capacity is overrated because there is no relation between resources available in college. Its affects the equity in higher education as well as quality.

Higher education in Satna district is suffering from quality crisis . Quantitative growth is very good, but qualitative aspect seems to be missing. There are some barriers like infrastructure, finance, visionary leadership, positive mindset towards quality , lack of government support , improper monitoring , inefficient job opportunity and absence of system for maintaining the quality in school education hampering the improvement of quality in higher education of Satna as well as in Maihar.

Although the institution is facing plenty of problems to maintain the academic quality at present but above all we have organized national and international seminars in various subjects. Transition rate from 1 year to 2<sup>nd</sup> year and pass out percentage is much more higher than state average. Most of our students come from rural areas with weak financial background .The financial support to maintain their academic continuity is not enough, so

the absenteeism from classrooms is higher in agriculture season. The academic curriculum is designed by university and DHE which is outdated and do not meet to local culture, occupation and industry needs. It is an another big reason for absenteeism. The old teaching methods without innovation are also boring and frenzied.

Govt, Vivekanand College Maihar has a carrier counselling centre. The centre is running without basic infrastructure and non availability of trained counsellors. There are some Financial support from government is available for skill training and job fare but the local and other industries and service sectors are not interested to recruit our students because the basic skill ,training and quality for specific job is not found .Socio-cultural and religious mindset of our students and geographical fabrication of Maihar City is also not properly matching with mindset of job givers.

Govt.Vivekanand PG College Maihar is overfilled to capacity . The strength of students is almost three time to its available resources, infrastructure and staff support. It is increasing more or less up to 10% per year .The GER of marginalized groups like SC & ST is lower than state ratio in our college, but it will be difficult to change the scenario without improving or overhauling of complete infrastructure, with positive mindset of stakeholders. Our institution has only 14 classrooms without proper fixers and furniture for regular teaching of nearly 2900 students. The capacity of each class is not more than 60.The college has four faculties and 15 Departments, but there are no separate/sharing rooms available to setup departmental library. Well equipped laboratory for science and others is urgently needed . The Present era of knowledge is completely based on IT, computers and other technological advancement but our college have not such infrastructure to compete with time. We have only 10 computers without internet and staff facilities . The concept of smart class and IT enabled teaching is yet to be adopted by us in future. The student teacher ratio is more than 500:1 in some subject.

Our institute has 57 sanctioned post of teaching staff but out of which only 21 regular staff are posted. The situation for non teaching staff is also worse. We have only one class three clerical and 5 lab technician staff. No sweeper and computer operator is posted by govt. The College management committee (janbhagedari samiti) has appointed some staff but it is not enough.

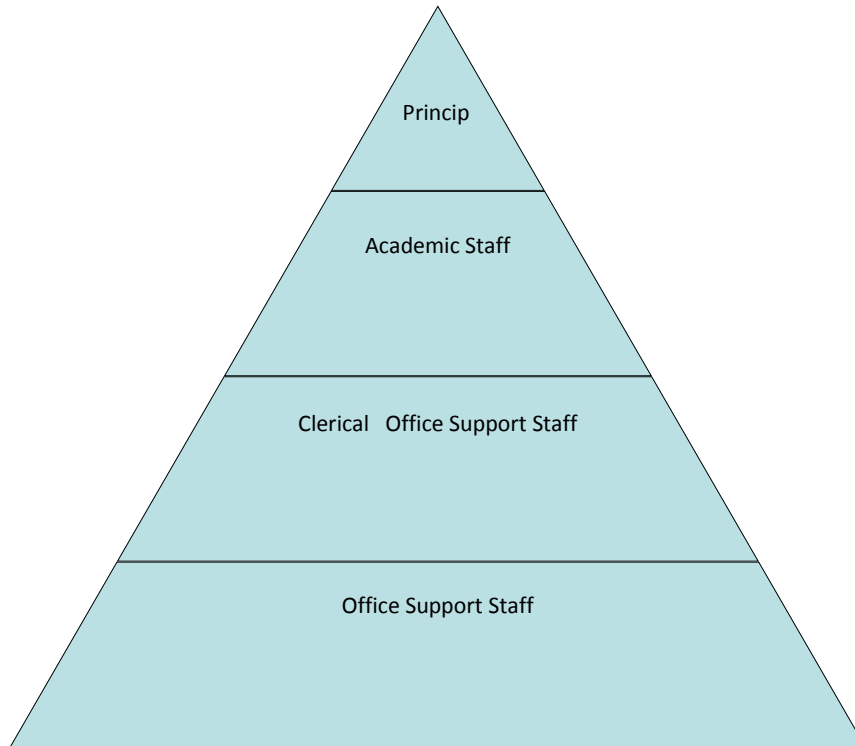
Administrative Block and library of our college was built in 1973 which is not according to our present need. Reading room and stocking facilities for more books are not available. The library have only 3000 books in stock. The separate room for counselling, sports, NSS and NCC, girls common room , hostel, clean toilets, gym and auditorium is also not availabl

This college have a littlebetter position in sports at district and state level with own limited resources. NCC unit for girls and NSS units are functional with enhanced output year after year. There is one career counseling cell, and personality development Cell also working without trained and skilled Counselor with worse infrastructural & financial support, with different innovative and student-friendly modes and methods to guide, aware and helps students to chart out their career graphs.

The college Janbhagidari samiti ,, under the able and enviable leadership of its president, is doing admirable work for the progress of the college. The college aims to facilitate and promote studies, research and extension activities in the emerging areas of higher education in four disciplines, viz., Arts, Commerce, Science and Home Science

Lists the members of the senior management team (Principal, Registrar, Deans etc.) and members of the Board of Governors including their designations and professional backgrounds.

### Administrative Hierarchy



For example -:

List of Chairperson/members of Statutory Bodies like Board of Governors/  
Executive Committee/ Academic Council/ Janbhagidari Samiti, etc

❖ The government Has Only appoint The president of janbhagedari Samiti

President – Shree Dilip Tripathi

Secretary- Principal

Member – Dr. A.K. Gautam

Member- -----

Member -----

Member -----

Member -----

### 3. Admission Statistics (1 page)

- The number of applicants at the UG and PG level who ranked the college as their 1<sup>st</sup>, 2<sup>nd</sup> and 3<sup>rd</sup> preference, the number of applications received for PhD courses, and the number of students admitted at each level as per the following format.

Applications	UG	PG	PhD
Applications that ranked the college as the 1 <sup>st</sup> preference	930	511	NA
Applications that ranked the college as the 2 <sup>nd</sup> preference	815		
Applications that ranked the college as the 3 <sup>rd</sup> preference	780	456	
Total number of applications received	2525	967	
Number of students admitted	2525	967	

Data Source: E-pravesh portal, records of the affiliating university

- A brief demographic profile of students admitted (in terms of gender, caste, whether from MP etc.) Sep 2016-17

Name of the Course	Gender	Category	% of students from the State	% of students from other states
UG	M ALE	SC 51 ST 35 OBC 200 GEN 136	100%	
	FEMALE	SC 57 ST 23 OBC 250 GEN 168	100%	
PG	M ALE	SC 23 ST 13 OBC 66 GEN 61	100%	
	FEMALE	SC 32 ST 05 OBC 142 GEN 167	100%	

### 3. Academic Programs: Core Programs - UG & PG

Core programs at UG level

Stream	Name of the Core Program	Eligibility	Optional subjects
Arts	Bachelor of Arts	10+2 from a recognized Board OR 10+2 with relevant vocational course from M.P. Board	Foundation course + a group of 3 optional subjects
	PG	Graduation from any stream	subject opted
Science	UG	10+2 from a recognized Board OR 10+2 with relevant vocational course from M.P. Board	Foundation course + a group of 3 optional subjects
	PG	Graduation from Science stream	subject opted
Commerce	UG	10+2 from a recognized Board OR 10+2 with relevant vocational course from M.P. Board	Foundation course + a group of 3 optional subjects
	PG	Graduation from Commerce stream	subject opted
Home Science	UG	10+2 from a recognized Board OR 10+2 with relevant vocational course from M.P. Board	Foundation course + a group of 3 optional subjects

#### Core Options at PG level

Faculty	Name of the Core Program	Eligibility	Subject Options
---------	--------------------------	-------------	-----------------

. Arts	Master of Arts	3 year Degree course in any faculty/ Honours degree course in same subject	No. of subjects
Commerce	Master of Commerce	3 year Degree course in commerce and science faculty/ Honours degree course in commerce and science subject	No. of subjects
Science	Master of Science	3 year Degree course in science faculty/ Honours degree course in science subject	No. of subjects

#### M.Phil/ Ph.D. Programs

S.no.	Subject	Eligibility	No. of scholars registered
NIL	NIL	NIL	NIL

#### PG Diploma/ Diploma/ Certificate/ Self-financed/ Skill based Vocational/ Short term courses

Name of the Course	Department	Duration	Fees	Seats
NIL	NIL	NIL	NIL	NIL

#### 4. Academic Calendar 2016-17

Academic Work	First/ Third/ Fifth Semester	Second/ Fourth/ Sixth Semester
Orientation Classes/Zero Classes/SWOT analysis	1 July to 13 July	2 January
Teaching and Continuous Comprehensive Evaluation	14 July to 7 November	3 jan. To 25 April
CCE Schedule	sep.4 <sup>th</sup> . week	march 2 <sup>nd</sup> week
Preparation Leave	8 Nov. To 14 Nov.	26 April to 27 April
Practical Exams (Graduation/Post Graduation)	15 oct. To 7 Nov.	25 march to 25 April
Semester and ATKT Exams	15 Nov. To 21 Dec.	28 April to 26 may
Declaration of Examination Results	31 Dec. till	15 Jun till
Semester Break (for students)	22 Dec. To 31 Dec.	27 may to 30 June.
Semester Break (for teachers)	22 Dec. To 31 Dec.	27 may to 15 June

#### 5. The Student Experience (4 pages)

Briefly describes student life in the college:



- Infrastructural facilities available to students - Classrooms, Smart classrooms, laboratories and equipment, Common Research Lab, Hostel; Canteen; Garden; Students common room, Auditorium, Sports Complex & other facilities

Student are mostly relished with class room, laboratories and sports facilities, auditorium, canteen and smart class room facilities are not available and requisite effects will be done to start it in future year with available aids from RUSA.

- Library as a learning resource- advisory committee, its composition, facilities & services (e & print), annual improvement initiatives

\_Library resources are used to augment the teaching- learning process on a regular basis. Teachers are motivated to study in the library for two hours daily to enhance and update their knowledge and to impart the same to students. Students have easy approach to the books; the institute has adopted open access system in the library teaching-learning -Reference - Yes \_-Reprography -Nil \_-ILL (Inter Library Loan Service)- Nil \_-Information deployment and notification (Information Deployment and Notification) -Nil \_-Download- Yes \_-Printing- Yes \_-Reading list/ Bibliography compilation- Yes \_-In-house/remote access to e-resources- Nil \_-User Orientation and awareness- Nil \_-Assistance in searching Databases- Nil \_-INFLIBNET/IUC facilities -Nil

- Student support services:
  - ✓ IT enabled services

•Number of computers with Configuration (provide actual number with exact configuration of each available system) 35 Computers •Computer-student ratio - One computer in each department •Stand alone facility •LAN facility -No •Wifi facility - No •Licensed software - Yes •Number of nodes/ computers with Internet facility - 6 •Any other

&

- ✓ Personal enhancement & development schemes- NCC, NSS, Facilities for physically challenged & slow learners; Tutor-Guardian Scheme, Grievance Redressal Cell, Entrepreneurship Cell, Remedial classes, Career Guidance Cell.

Student participants in national level competitions. Academic and non-academic

- ✓ Extracurricular activities: Calendar of activities (Sports, Youth Festival, cultural and literary events), Achievements, Awards

As per Govt. Norms

- Extension Activities

NSS Unit of our college actively participates in programs and makes awareness and alleviate problem like illiteracy health hygiene drug addiction etc. by visiting villages and slum areas and health which inculcates in students a practice of good citizenship and a habit of service orientation. NSS Unit has organized free medical checkups and awareness program. The involvement of NSS and NCC in various social activities are monitored by the faculty in charge time to time. The institutional mechanism to track students involvement in various social movements/ activities which promote citizenship roles is running units like Anti Drug motivation, voter awareness programme, HIV Adis, blood donation, NSS organize camp in villages to promote awareness about health andThe performance & quality of the institution is achieved by pre- decided goals & objective for betterment of students the curriculum & extra curriculum has to be completed within stipulated calendar hygiene.

## 6. Student Achievements (5 pages)

Highlights the most significant academic and non-academic achievements of students over the past year. This can include major academic awards and scholarships received student research, and sports and other extracurricular activities. Focusses, in particular, on profiling

top achievers and describing how resources provided by the college helped these students succeed.

## ACADEMIC

- Merit

S.no	Name of the award/ medal/ meritorious scholarship	Name of the recipient	Class	Area of achievement
	NIL	NIL	NIL	NIL

- Research scholarship/ award

S.no	Name of the scholarship award/	Name of the recipient	Class	Area of research
	NIL	NIL	NIL	NIL

## CULTURAL

- Participation

S.no	Name of the event	District Level	State Level	University	National Level
1-	Classical inst.	01	01	-	-
2-	Light Vocal Indian	01	-	01	-
3-	Group Song Indian	06	-	-	-
4	Western Solo Vocal	01	-	-	-
5	Western Group Song	06	-	-	-
6-	Debate	02	-	-	-
7-	Elocution	01	-	-	-
8-	Quiz	03	-	-	-
9-	Rangoli	01	-	-	-

- Awards and Achievements

Name of the student	Class	Event	Award/Achievement
NIL	NIL	NIL	NIL

## SPORTS

- Participation

S.no	Name of the event	Division Level	State Level	University/ National Level	International Level
1	Table tennis	02	-	-	-

2	Chess	03	1	1	-
3	volleyball	03	-	-	-
4	Judo	01	-	-	-
5	Cricket	03	02	02	-
6	KhoKho	01	-	-	-
7	Wrestling	05	3	3	-

- Awards and Achievements**

Name of the student	Class	Sport	Award/Achievement
NIL	Nil	Nil	NIL

## 7. Research Activities (4 pages)

Identifies major research themes, places these themes in their social and economic context, highlights major research achievements (publications, collaborations, intellectual property produced, external funding received etc.), and profiles top researchers. Lays out the research agenda and identifies themes for the coming year.

- Major research themes**

S. No.	Department	Prioritized research area and expertise	Social/ economic context
	NIL	NIL	NIL

- Major/Minor research projects**

S. No	Name of the Faculty	Year	Title of the project	Name of funding Agency/ Industry	Total grant received
	NIL	NIL	NIL	NIL	NIL

- Papers presented in regional, national and international seminars/ conferences**

S. No.	Name of the faculty	Regional/ State	National	International
1-	Art	Nil	Nil	Nil
2	Commerce	Nil	Nil	Nil
3-	Maths	Nil	Nil	Nil
4-	Physics	Nil	Nil	Nil
5-	Chemistry	Nil	03	01
6-	Botany	Nil	03	01
7-	Zoology	Nil	03+02	01+01

- Publications in national/ international journals**

S.No.	Name of the faculty	Name of the journal	Title of the paper	ISSN/ ISBN number /Impact factor
1-	Art	Nil	Nil	Nil
2	Commerce	Nil	Nil	Nil
3-	Maths	Nil	Nil	Nil
4-	Physics	Nil	Nil	Nil

5-	Chemistry	J. Indian chem.society  J. Indian chem.society j. Molecular Structure	1- synthetic approach .....Schiff bases 2-synthetic spectral..... derived ligand. 3 -synthesis characterization .....Schiff base ligand.	vol.93 pp. 953-964 Aug.2016  vol.93 pp. 1147-1158 Oct.2016  1149,(2017) 846-861
6-	Botany	2 International journals	Invitro Propagation Palnt Pongamia	2321-290x 2349-980x
7-	Zoology	1 International journal 2 International journal 3 International journal	Causes of .... Degradation in India studies on recycles-- -----environment studies on fundamental ----- sustainable development	2395-0269  2320 -8767/1.9411  2320-7973

- List of linkages/ Collaborations/ MOUs

NIL
-----

College Publications: Research Journal, Magazine, Newsletter

NIL
-----

## 9.Human Resources (2 pages)

Highlights senior faculty and administrative appointments. Describes what new areas of activity (new courses, research areas, extracurricular activities etc.) and administrative improvements are enabled by these appointments.

### 1.Faculty and Administrative appointments: Teaching and Non-teaching

Positions	Teaching Faculty				Non Teaching Faculty	Technica l Staff
	Prof	Promot ed Prof	Assista nt Prof	Guest Faculty		
Sanctioned by UGC/ University/ State Govt	10	-	34	25	32	-
<i>Filled</i>	04	-	17	29	13	-
Sanctioned by Management/ Janbhagidari Samiti/ Other authority	-	-		06	08	-
<i>Filled</i>				06	08	

### 1. Guest Faculty: subject-wise appointments

S.no.	Name of the Guest Faculty	Qualification	Subject
1	SANDHYA SHARMA	M.sc PH.D	BOTANY

2	VANDANA DIXIT	M.sc PH.D	BOTANY
3	DR.SHIVSHANKAR SAKET	M.sc PH.D	CHEMISTRY
4	ABHINAV KUMAR TIWARI	M.com PH.D	COMMERCE
5	SUBODH KUMAR SHUKLA	M.com PH.D	COMMERCE
6	VINITA DWIVEDI	M.A. PH.D	ECONOMICS
7	SHASHI SONI	M.A. PH.D	ENGLISH
8	TARANNUM KHAN	M.A.	ENGLISH
9	JITENDRA KUMAR PAYASI	M.A. PH.D	GEOGRAPHY
10	RAJESH KUMAR	M.A. PH.D	HINDI
11	Jeetendra Kumar Pandey	M.A. PH.D	HISTORY
12	PRAVEENA BRADIA	NET. MHSC. PH.D	HOME SCIENCE
13	AVADHESH KUMAR VERMA	NET. M.Lib.	LIBRARIAN
14	SHAILENDRA KUMAR TRIPATHI	M.sc PH.D	MATHEMATICS
15	RAMA CHATURVEDI	M.A. PH.D	MUSIC
16	MUKESH KANWAL TRIPATHI	M.sc PH.D	PHYSICS
17	MAMTA PANDEY	M.A. PH.D	POLITICAL SCIENCE
18	RAVENDRA KUMAR PATHAK	M.A. PH.D	POLITICAL SCIENCE
19	LALLA RAIDAS	M.A., PH.D, NET	POLITICAL SCIENCE
20	SHIV SHANKAR NAPIT	M.A. PH.D	SANSKRIT
21	RAVIKANT CHOUDHARY	MPED. , M.Phil	SPORTS OFFICER
22	RAJBHAN SAHU	M.sc PH.D	ZOOLOGY
23	Pratibha samdariya	MHSC. PH.D	Home science
24	DEEPMALA SINGH	MHSC. PH.D	HOME SCIENCE

## 2. Annual improvement in academic, research & administrative Initiatives

N A
-----

## 8. Events and Initiatives (5 pages)

Describes major events including seminars, conferences, competitions, student study trips etc. Focuses on what was achieved and learned, and how the college will follow up.

Describes significant academic, administrative, student support, fundraising, and other initiatives over the past year. The description of each initiative will be structured around the

need for the initiative, how it was designed, what resources were used, what results were achieved, and which features of the initiative drove success.

NA

Describes the college's activities over the past year under different schemes, discusses performance against strategic/institutional development plans and commitments over the previous year.

Indicator*	Baseline Value	Target for [current year]	Value as on 30 <sup>th</sup> September [current year]
NA	NA	NA	NA

#### Role of Internal Quality Assurance Cell (IQAC) in academic audit and initiating quality assurance strategies and processes

The IQAC contribute to improvement of innovations in curriculum, Extracurricular, cocurricular activities and enhancement of the knowledge, personality and capacity of the students. It promotes the research, consultancy, and infrastructure as well as ensures the timely, efficient and progressive performance of academic, administrative and financial tasks of the institution.

Describes the college's placement cell activities, placement rate and salary statistics, and lists major employers and sectors of employment (disaggregated by gender and course studied). Profiles successful alumni and identifies emerging placement trends.

#### Activities of Placement Cell

S.no.	Name of the activity	Name of the Resource Person/ agency	Date & Duration
	nil	nil	nil

#### Placement Details

S.no.	No. of Students Selected	List of employers/companies	Salary Package
Nil	Nil	Nil	Nil

#### Alumni Profile

S.no.	Name of Alumni	Employment status	Name of the organisation
-------	----------------	-------------------	--------------------------

Nil	Nil	Nil	Nil
-----	-----	-----	-----

### 11. Innovations and Best Practices

Cleanliness and plantation are two major issues here. The staff and students are made aware about these issues and their need in life. NSS unit is doing commendable efforts to create awareness towards environmental issues by organizing camps in rural areas. Plantation is done every year on important days i.e. Independence day, Republic day and Hariyali Mahotsava etc. Innovations Teaching through new techniques including use of PPT are important innovations in this institution. Yoga and Self-defence also play important role in keeping students fit for study. Organization of college level seminar “The science Innovation and Research” by department of physics is another new innovation to promote the student from post graduate level to research level. This seminar is organized in every six month by the physics department of the college Best Practice I – Personality Development Centre Personality Development Centre is run in the institution to groom the personality of students coming from rural areas with backward social background so as to prepare them as employable in job–market. Basic training is also imparted in speaking and presenting one self. Best practice II – Computer

### 13. Looking Ahead (3 pages) Future Plans

Lays out the college’s priorities and goals over the coming year. Describes key initiatives planned, what each initiative is expected to achieve, and how it will contribute to the college’s long term development.

#### Key Initiatives Planned/ implemented

S. No	Head (administrative/ academic, etc)	Nature of proposal	Expected Outcome
	nil	nil	nil

### 14. Appendix: Institutional Performance Data and Financial Reports

Provides key data on the institution and its performance, including achievement against strategic plan targets and financial reports. This section is mandatory. All data fields must be completed, in the format and as per the instructions attach

## Part II

Appendix: Institutional Performance Data and Financial Reports (all part II data kindly fill in attached excel sheet )

1. Sanctioned seats and enrolment



<b>(a) Sanctioned Seats</b>					
	SC	ST	Other Reserved Categories	General	Total
Undergraduate	331	98	1166	690	3700
Postgraduate	92	30	397	360	1240
PhD	1	nil	5	4	10

Data Source: AISHE

<b>(b) Enrolment</b>							
		Undergraduate			Postgraduate		PhD
		Year 1	Year 2	Year 3	Year 1	Year 2	
SC	Male	65	60	26	21	14	
	Female	80	62	29	38	19	
ST	Male	27	15	18	10	7	
	Female	15	11	11	10	3	
Other Reserved Categories	Male	249	158	96	81	47	
	Female	241	278	154	181	88	
General	Male	141	100	49	71	41	
	Female	134	155	111	172	76	
Total	Male	482	333	189	183	109	
	Female	470	506	305	401	186	

Data Source: AISHE

<b>Number of sanctioned seats by discipline group and enrolment in the 1<sup>st</sup> year as on September 30<sup>th</sup> [current year]</b>				
Discipline Group	Undergraduate		Postgraduate	
	Sanctioned Seats	Enrolment	Sanctioned Seats	Enrolment
Arts	1450	1020	620	326
Commerce	1050	524	320	351
Home Science	150	15		
Indian Languages	NIL			
IT & Computer	NIL			
Journalism and Mass Communication	NIL			
Law	NIL			
Library and Information Science	NIL			
Linguistics	NIL			
Management	NIL			
Marine Science and Oceanography	NIL			
Oriental Learning	NIL			
Physical Education	NIL			
Religious Studies	NIL			
Science	NIL			
Social Science	900	771	300	202
Social Work	NIL			
Women Studies	NIL			

Data Source: AISHE

### 1. Transition and on-time graduation

<b>(a) Transition from the 1<sup>st</sup> year to the 2<sup>nd</sup> year (Undergraduate)</b>		
	Number of students admitted	Of (*), the number of students currently enrolled in the 2 <sup>nd</sup> year who:

		to the 1 <sup>st</sup> year in [the previous academic year] (*)	Passed all subjects in the 1 <sup>st</sup> year	Were Allowed to Keep Terms
SC	Male	50	40	4
	Female	70	60	3
ST	Male	16	12	1
	Female	23	20	2
Other Reserved Categories	Male	100	90	5
	Female	160	140	10
General	Male	170	140	12
	Female	220	180	20
Total	Male	326	282	22
	Female	473	400	34

Data Source: AISHE, examination results declared by [affiliating university/autonomous college]

<b>(b) Transition from the 1<sup>st</sup> year to the 2<sup>nd</sup> year (Postgraduate)</b>				
		Number of students admitted to the 1 <sup>st</sup> year in [the previous academic year] (*)	Of (*), the number of students currently enrolled in the 2 <sup>nd</sup> year who:	
			Passed all subjects in the 1 <sup>st</sup> year	Were Allowed to Keep Terms
SC	Male	30	28	1
	Female	50	45	4
ST	Male	10	8	2
	Female	12	10	1
Other Reserved Categories	Male	60	50	6
	Female	100	80	12
General	Male	100	80	18
	Female	120	100	15
Total	Male	200	166	27
	Female	282	225	32

Data Source: AISHE, examination results declared by [affiliating university/autonomous college]

<b>(c) On-time graduation (Undergraduate)</b>			
		Number of students admitted to the 1 <sup>st</sup> year in [year t-3] (*)	Of (*), the number of students who passed all final year examinations for the previous academic year
SC	Male		
	Female	Nil	Nil
ST	Male	Nil	Nil

	Female	Nil	Nil
Other Reserved Categories	Male	Nil	Nil
	Female	Nil	Nil
General	Male	Nil	Nil
	Female	Nil	Nil
Total	Male	Nil	Nil
	Female	Nil	Nil

Data Source: AISHE, examination results declared by [affiliating university/autonomous college]

<b>(b) On-time graduation (Postgraduate)</b>			
		Number of students admitted to the 1 <sup>st</sup> year in [year t-2] (*)	Of (*), the number of students who passed all final year examinations in the current year
SC	Male	Nil	Nil
	Female	Nil	Nil
ST	Male	Nil	Nil
	Female	Nil	Nil
Other Reserved Categories	Male	Nil	Nil
	Female	Nil	Nil
General	Male	Nil	Nil
	Female	Nil	Nil
Total	Male	Nil	Nil
	Female	Nil	Nil

Data Source: AISHE, examination results declared by [affiliating university/autonomous college]

## 2. Faculty and administrative staff in position and training

<b>(a) Faculty and administrative staff in position as on 30<sup>th</sup> September, [current year]</b>							
		Reserved					Unreserved
		SC	ST	MP Residents	Females	Others	
Assistant Professor	Sanctioned						
	Filled (Regular)	2	1				17
	Filled (Contract)						
	Guest Lecturers				17		29
Associate	Sanctioned	Nil	Nil	Nil	Nil	Nil	Nil

<b>Professor</b>	Filled (Regular)	Nil	Nil	Nil	Nil	Nil	Nil
	Filled (Contract)	Nil	Nil	Nil	Nil	Nil	Nil
	Guest Lecturers	Nil	Nil	Nil	Nil	Nil	Nil
<b>Professor</b>	Sanctioned						
	Filled (Regular)				1		4
	Filled (Contract)						
	Guest Lecturers						
<b>Admin. Staff (all)</b>	Sanctioned						
	Filled (Regular)						
	Filled (Contract)						
<b>Accountant</b>	Sanctioned						
	Filled (Regular)						
	Filled (Contract)						

Data Source: AISHE

<b>(b) Training of faculty and administrative staff between October 1<sup>st</sup> [previous year] to September 30<sup>th</sup> [current year]</b>				
		<b>Leadership and management training</b>	<b>Training in the area of academic specialisation</b>	<b>Other training</b>
<b>Assistant Professor</b>	Number trained			
	Avg. number of days			
<b>Associate Professor</b>	Number trained			
	Avg. number of days			
<b>Professor</b>	Number trained			
	Avg. number of days			

<b>Administrative Staff (all)</b>	Number trained		N/A	
	Avg. number of days		N/A	
<b>Accountant</b>	Number trained		N/A	
	Avg. number of days		N/A	

Data Source: Compiled from training certificates submitted by faculty/administrative staff

<b>(c) Faculty qualifications as on 30<sup>th</sup> September, [Current Year]</b>					
		PhD	Postgraduate	Undergraduate	Others
<b>Assistant Professor</b>	Regular	14	3		
	Contract				
	Guest Lecturers	13	6		10
<b>Associate Professor</b>	Regular				
	Contract				
	Guest Lecturers				
<b>Professor</b>	Regular	4			
	Contract				
	Guest Lecturers				

Data Source: AISH

### 3. Student support services

<b>(a) Financial support received (from all sources) by students in the college between October 1<sup>st</sup> [previous year] to September 30<sup>th</sup> [current year]</b>							
		Undergraduate		Postgraduate		PhD	
		Number	Average Value (Rs.)	Number	Average Value (Rs.)	Number	Average Value (Rs.)
<b>SC</b>	Male	134	443187	23	188001		
	Female	263	503155	48	122938		
<b>ST</b>	Male	42	135444	11	49813		
	Female	61	117678	9	37765		
<b>General</b>	Male	40	54000				
	Female	278	154650				
<b>Total</b>	Male	216	316315	34	118907		
	Female	602	387741	57	80351		

Data Source: AISHE

<b>(a) Financial support received, from the DHE, by students in the college between October 1<sup>st</sup> [previous year] to September 30<sup>th</sup> [current year]</b>							
		Undergraduate		Postgraduate		PhD	
		Number	Average Value (Rs.)	Number	Average Value (Rs.)	Number	Average Value (Rs.)
<b>SC</b>	Male	134	443187	23	188001		
	Female	263	503155	48	122938		
<b>ST</b>	Male	42	135444	11	49813		
	Female	61	117678	9	37765		
<b>General</b>	Male	40	54000				
	Female	278	154650				
<b>Total</b>	Male	216	316315	34	118907		
	Female	602	387741	57	80351		

Data Source: College records, DHE

(b) Hostel occupancy as on 30 <sup>th</sup> September, [Current Year] (all hostels)		
Capacity:-50 Males:-NIL Females: 50		Number of residents
SC	Male	
	Female	
ST	Male	
	Female	
General	Male	
	Female	
Total	Male	
	Female	

Data Source: Hostel register verified against fee receipts on record

(c) Hostel occupancy as on 30 <sup>th</sup> September, [Current Year] 2016-17 (girls only hostels opened _____)	
Capacity:-50	Number of residents
SC	
ST	
General	
Total	

Data Source: Hostel register verified against fee receipts on record

#### 4. Examination Results

(a) Examination results for [previous academic year] (undergraduate)											
		SC		ST		Other Reserved Categories		General		Total	
		M	F	M	F	M	F	M	F	M	F
1 <sup>st</sup> year	Appeared	75	110	18	42	140	200	80	122	313	474
	1 <sup>st</sup> division	05	10	03	04	20	30	05	12	33	56
	2 <sup>nd</sup> Division	30	40	05	13	40	70	25	30	100	153
	3 <sup>rd</sup> Division	40	60	10	25	80	100	50	80	180	265
2 <sup>nd</sup> year	Appeared	29	48	08	15	80	128	46	70	183	261
	1 <sup>st</sup> division	05	08	02	03	10	08	06	10	23	29

	2 <sup>nd</sup> Division	09	15	02	04	30	40	15	20	56	79
	3 <sup>rd</sup> Division	15	25	04	08	40	80	25	40	84	153
3 <sup>rd</sup> year	Appeared	15	27	18	16	47	74	25	39	105	156
	1 <sup>st</sup> division	05	07	08	06	07	24	05	09	25	46
	2 <sup>nd</sup> Division	07	15	06	07	30	30	15	20	58	72
	3 <sup>rd</sup> Division	03	05	04	03	10	20	05	10	22	38

Data Source: AISHE, Examination results declared by [affiliating university/autonomous college]

(a) Examination results for [previous academic year] (postgraduate)											
		SC		ST		Other Reserved Categories		General		Total	
		M	F	M	F	M	F	M	F	M	F
1 <sup>st</sup> year	Appeared	18	28	15	21	40	70	30	50	103	169
	1 <sup>st</sup> division	05	08	05	04	05	10	05	10	20	32
	2 <sup>nd</sup> Division	08	15	07	12	25	40	15	25	57	92
	3 <sup>rd</sup> Division	05	05	03	05	10	20	10	15	28	45
2 <sup>nd</sup> year	Appeared	14	21	03	06	45	65	23	35	85	127
	1 <sup>st</sup> division	04	05	01	03	10	15	06	10	21	33
	2 <sup>nd</sup> Division	06	10	02	02	20	35	12	20	40	67
	3 <sup>rd</sup> Division	04	06	-	01	05	15	05	05	14	27

Data Source: AISHE, Examination results declared by [affiliating university/autonomous college]

#### 5. Placement and student tracking

(a) Placement and Tracking of Students who graduated in [previous academic year] (Undergraduate)						
		Number of students who graduated in [the previous academic year] (*)	Of (*), the number of students who were successfully tracked and are:			
			Employed/ Self-employed	In education/ training	Unemployed	Not in the labour force
SC	Male	Nil	Nil	Nil	Nil	Nil
	Female	Nil	Nil	Nil	Nil	Nil
ST	Male	Nil	Nil	Nil	Nil	Nil

	Female	Nil	Nil	Nil	Nil	Nil
General	Male	Nil	Nil	Nil	Nil	Nil
	Female	Nil	Nil	Nil	Nil	Nil
Total	Male	Nil	Nil	Nil	Nil	Nil
	Female	Nil	Nil	Nil	Nil	Nil

Data Source: Records of the college placement cell

<b>(b) Placement and Tracking of Students who graduated in [previous academic year] (Postgraduate)</b>						
		Number of students who graduated in [the previous academic year] (*)	Of (*), the number of students who were successfully tracked and are:			
			Employed/ Self-employed	In education/ training	Unemployed	Not in the labour force
SC	Male	Nil	Nil	Nil	Nil	Nil
	Female	Nil	Nil	Nil	Nil	Nil
ST	Male	Nil	Nil	Nil	Nil	Nil
	Female	Nil	Nil	Nil	Nil	Nil
General	Male	Nil	Nil	Nil	Nil	Nil
	Female	Nil	Nil	Nil	Nil	Nil
Total	Male	Nil	Nil	Nil	Nil	Nil
	Female	Nil	Nil	Nil	Nil	Nil

Data Source: Records of the college placement cell

## 6. PhDs Awarded

<b>Number of PhDs awarded between October 1<sup>st</sup> [previous year] to September 30<sup>th</sup> [current year] 2016-17</b>	
<b>Discipline Group</b>	<b>Number</b>
Arts	
Commerce	2
Criminology and Forensic Science	Nil
Cultural Studies	Nil
Defence Studies	Nil
Design	Nil
Disability Studies	Nil
Education	Nil
Fashion Technology	Nil
Fine Arts	Nil



Fisheries Science	Nil
Foreign Languages	Nil
Gandhian Studies	Nil
Home Science	Nil
Indian Languages	Nil
IT & Computer	Nil
Journalism and Mass Communication	Nil
Law	Nil
Library and Information Science	Nil
Linguistics	Nil
Management	Nil
Marine Science and Oceanography	Nil
Oriental Learning	Nil
Physical Education	Nil
Religious Studies	Nil
Science	Nil
Social Science	Nil
Social Work	Nil
Women Studies	Nil
Literature	Nil
Other	Nil
<b>All disciplines</b>	Nil

Data Source: AISHE

#### 7. Research and consultancy

Revenue generated through externally funded research and consultancies over [previous financial year]		
Discipline Group	Number of active projects	Total Revenue Generated (Rs. lakhs)
Arts	Nil	Nil
Commerce	Nil	Nil
Science	10	03
Social Science	Nil	Nil
Social Work	Nil	Nil
<b>All disciplines</b>	Nil	Nil

Data Source: College/university records

Number of papers published in peer-reviewed journals between October 1 <sup>st</sup> [previous year] to September 30 <sup>th</sup> [current year] 2016-17			
Discipline Group	Number of papers published		Number of published papers through cross-institute research collaboration
	International Journals	National Journals	
Arts	Nil	Nil	Nil
Commerce	Nil	Nil	Nil
Criminology and Forensic Science	Nil	Nil	Nil
Cultural Studies	Nil	Nil	Nil
Defence Studies	Nil	Nil	Nil
Design	Nil	Nil	Nil
Disability Studies	Nil	Nil	Nil

Education	Nil	Nil	Nil
Fashion Technology	Nil	Nil	Nil
Fine Arts	Nil	Nil	Nil
Fisheries Science	Nil	Nil	Nil
Foreign Languages	Nil	Nil	Nil
Gandhian Studies	Nil	Nil	Nil
Home Science	Nil	Nil	Nil
Indian Languages	Nil	Nil	Nil
IT & Computer	Nil	Nil	Nil
Journalism and Mass Communication	Nil	Nil	Nil
Law	Nil	Nil	Nil
Library and Information Science	Nil	Nil	Nil
Linguistics	Nil	Nil	Nil
Management	Nil	Nil	Nil
Marine Science and Oceanography	Nil	Nil	Nil
Oriental Learning	Nil	Nil	Nil
Others / Inter-disciplinary	Nil	Nil	Nil
Physical Education	Nil	Nil	Nil
Religious Studies	Nil	Nil	Nil
Science	07		
Social Science	Nil	Nil	Nil
Social Work	Nil	Nil	Nil
Women Studies	Nil	Nil	Nil
<b>All disciplines</b>	Nil	Nil	Nil

Date Source: College records based on published papers submitted by faculty

#### 8. NAAC accreditation and UGC autonomy

	Date of Application (LOI & SSR submitted)	Date on which accreditation was received	Grade	Valid till
1 <sup>st</sup> Cycle	27/02/2017			
2 <sup>nd</sup> Cycle				
3 <sup>rd</sup> Cycle				

Date of submission of the Annual Quality Assurance Report for the current year: \_\_\_\_\_.

Does the college have currently valid UGC autonomy? \_\_\_\_\_. If yes, by order number \_\_\_\_\_, dated \_\_\_\_\_.

#### 9. Institutional Trends

Variable	Baseline Value	[Year 1]	[Year 2]	[Year 3]	[Year 4]	Current Year
----------	----------------	----------	----------	----------	----------	--------------

Percentage of sanctioned seats in the 1 <sup>st</sup> year filled (undergraduate, all categories)	1500 1100 1100	63%	77%	43%		
Percentage of sanctioned seats in the 1 <sup>st</sup> year filled (postgraduate, all categories)	710 530	82%	50%			
Transition rate from the 1 <sup>st</sup> year to the 2 <sup>nd</sup> year (undergraduate, all categories)						
On-time graduation rate (undergraduate, all categories)						
Transition rate from the 1 <sup>st</sup> year to the 2 <sup>nd</sup> year (post graduate, all categories)						
On-time graduation rate (postgraduate, all categories)						
Regular faculty in position rate (all levels, reserved categories)						
Regular faculty in position rate (all levels, unreserved categories)						
Percentage of regular faculty with PhDs (all levels)						
Employment rate of graduates from the previous academic year (undergraduate, all categories)						
Employment rate of graduates from the previous academic year (postgraduate, all categories)						
Percentage of total revenue generated through externally funded research						
Number of papers published in peer-reviewed, international journals						

Source: Tables under section 1-8.

#### 10. Financial Reports

Name and registration number of the auditor [rachna shrivastava](#) and associates M.N. 402115

\_\_\_\_\_.

Number of audit observations recorded by the auditor [1-4-2008 to 31-3-2014 and 2015 to 2017 janbha. Only all section \(PDAF.govt.sport.UGC\)](#) \_\_\_\_\_.

Number of audit responses found satisfactory, as certified by the project directorate [AF,PD,Sport,UGC, janbhagidari samiti](#) \_\_\_\_\_.

Certified audit reports as per the standard Chart of Accounts to be attached.

## 11. All India Survey of Higher Education

Date on which all applicable fields of the Data Collection Format for the All India Survey of Higher Education were completed and submitted \_\_\_\_\_

### Instructions

- All data is to be reported as on 30<sup>th</sup> September of the current year.
- Postgraduate courses refer to courses at the Masters and MPhil level.
- The number of sanctioned seats is the number of students the college is authorized, by the UGC/DHE/affiliating University, to admit in the first year of its degree programs.
- The number of sanctioned faculty posts is the number of faculty the college is authorized, by the UGC/DHE/affiliating University, to recruit on a full-time basis.
- Enrolment is defined as the number of students who have paid their admission fees for joining a degree program by September 30 of the respective academic year.
- Admission is defined as the number of students who have paid their admission fees for joining a degree program, in the first year, by September 30 of the respective academic year and who have never been enrolled in that degree program previously.
- Other Reserved Categories include all categories of students (for e.g. sports quota, extracurricular quota, residents of Jammu and Kashmir etc.) for whom a fixed percentage of sanctioned seats are reserved.
- Examination results are to be reported for examinations held in the previous academic year, and the results for which were declared by 30<sup>th</sup> September of the current year.
- Allowed to keep terms refers to students who did not pass all subjects in the previous year but were allowed to transition to the next year of their respective degree programs.
- Regular faculty refers to faculty employed on open-ended, full-time contracts as per UGC norms.
- Contract faculty refers to faculty employed on fixed term, full-time contracts as per UGC norms.
- Guest Lecturers refers to faculty employed on a per lecture or per day basis as per UGC norms.
- Data on scholarships is to be reported on all scholarships awarded between 1<sup>st</sup> October of the previous year and 30<sup>th</sup> September of the current year.
- A hostel seat is considered occupied if a student has been allotted a seat in the hostel and the student, to whom the seat was allotted, has paid the hostel fee for the current academic year.
- Examination results refers to the average score obtained by a student, in the respective academic year, across all exams that are used to assess whether the student has met the requirement of the degree program in which he/she is enrolled.
- Student tracking refers to having up to date contact information (mobile phone and/or email address) and status (employment, unemployed, in formal education or training, not in the labour market/other) for each student for up to six from the end of the academic year when the student passed out (graduated).
- Externally funded research and consultancies refer to research and/or development funded through consultancy contracts or partnerships with a sponsor or purchaser who is external to the institution.
- A peer-reviewed journal is one that subjects an author's research to review and evaluation by others who are experts in the same field, before the research is published.

- An international journal is one that has an International Standard Serial Number (ISSN) issued by the ISSN International Centre.
- A paper is said to be published through cross-institute research collaboration if the primary affiliation of at least two authors is to different colleges/institutions.
- The institutional performance indicators common across all institutions can be found in the PIP. Institution-specific performance indicators can be found in the MOU signed between the Institution and the Department of Higher Education.
- The standard Chart of Accounts refers to the standard format for audit reports as notified by the Department of Higher Education through its orders.