

Annual Report 2015-16

This format outlines the annual reports to be published by all colleges in the Madhya Pradesh on their websites, by October 31st of each year. Part I is intended as a guide and colleges are free to alter the contents and format as they see fit. Part II, the Appendix (Institutional Performance Data and Financial Reports), is mandatory and colleges are required to report all data as per the attached format and instructions.

Important Information –

- Name of the college – Govt. College Bankhadi Dist. Hoshangabad
- Place of the college – Bankhadi (M.P.)
- District – Hoshangabad
- Division - Narmadapuram
- Year of establishment of college – 2013
- Name and Contact details(Mail id , Phone) of Principal – Dr. Kamini Jain, 07574254070, hehsgpgchos@mp.gov.in
- Name , Post and Contact details of (mail id, Phone no.) of Reporting In charge –
- Dr. Yashawant Ningwal, Assistant Professor, 9926478443
- Date of report submission – 15-02-2018

Part I

- 1. The Principal's Report (2 pages)-** Highlights the key activities, events, and successes of the past year and briefly describes major new initiatives to be undertaken over the next year.

1. Student support – scholarship, free stationary and free books for SC /ST students, Remedial Coaching, Quality Assurance Cell, Sports Facility, Youth Festival and the celebration of important Days, Literary and cultural Activities, student help desk, anti-raging and discipline committee, internet and Wi-fi facility, tutorial and remedial coaching, special study materials have been made by the teaching staff and distributed among students. Classes for weak students are being organized under the scheme of UGC.
2. Social Activity - 54 students are registered, students are involved in “Swachta Abhiyan and Pulse-polio programme.
3. Social work – There are Social work Units in this college. Programmes are organised according to Social work activity calendar. These activities are plantation, orientation, cleanliness camp, Independence Day Celebration, Komi Ekta Saptah, Aids Redribben Activity, Health Checkup camp, Nutrition week, world food day, world environment day. One day Camp visit in Anath Ashram, Old Age Home and various cultural activities held in the college and society.
4. Vivekanand Career Counselling Cell conducts several programmes like Koushal vikas programme, Guideline for personality development, career awareness- Reasoning, Group discussion, formal dressing, soft toys training, Making Candle and Stick Training, Banking, Insurance, Social work, Designing, preparation of interview, resume

preparation.

5. Quality extension activity – The Department of Higher Education of MP observed 2011-12 as quality year and 2012-13 as quality extension year. According to Higher Education Department of MP guidelines QEC emphasises on SWOC (Strength, weakness, opportunities and challenges) analysis, self-evaluation by teachers, promoting modern technologies, language improvement, setting up Pratibha bank, promoting awareness programmes, zero classes, language improvement classes in Hindi and English. Prominent Guest: the college invites eminent researchers and scholars, doctors, businessmen and experts on different occasions to interact with students.
6. Personality development Cell – The Department of Higher Education of MP launched a new concept of personality development of students named “drashti badalne se srashti badlegi”. Programmes are organised according to personality Development Cell activity calendar. This view is being embodied by establishing personality development cell which plays an important role in developing overall personality of the student. The cell emphasises on inculcating moral values, imbibing characteristics of Indian culture, preserving cultural heritage Yuva panchayats are organized, students magazine- a quarterly news letter “mahavidhyalay samachar darshan” and student magazine “Pratyasha” are published. Awareness programmes on various issues of society and psychological programmes are conducted which play a very important role in overall personality development of the students.
7. Alumini – A Meeting was held on 22th Dec. 2015 in which old students participated in various cultural activities and give valuable suggestions for the development of the college and the students.
8. Library Facility – In the college library reprography service, N-list membership, materials for competitive exams, study room facility, group study e-matters through interactive board, visual presenter facility, paid photocopy facility, facility of OPAC, E-resource center facility, e matter, subject syllabus, teachers study corner, book issue facility are available till exam based on security fee.
9. Sports – The sports department of the college conducts state kabaddi tournament, special training program of JUDO-KARATE, aerobic, Yoga for physical and mental health, district level sports and celebration of sport day.
10. Examination and Semester Cell – It monitors Online CCE, Project and Practical Marks, exam of other universities such as Makhan Lal Chaturvedi Rashtriy Patrakarita University and IGNOU recognized as Examination Centre. Competitive exams for Vyapam, MP Public service commission examination etc.
11. Community Linkage – Students of Social Work Department of the college undertakes several activities with NGO, vridhha ashram and anath ashram. Students of college are linked with mahila balvikas, hospital, fitness centre and Krishi vigyan Kendra Bankhadi. Student of college are linked with soil testing centre- Krishi Vigyan Kendra, fisheries testing centre pawarkheda Hoshangabad. Programmes are organized in the college by various linked departments cash prizes and certificates are given to the students in

every programme every year.

12. Club Activity - College runs 05 clubs for overall personality development of the students. They are group discussion and debate club, creative writing, book reading, workshop seminar, GK test, computer awareness, language skill development, cleanliness, publication and media, environment awareness, idea club, internet, performing and visual art club, yoga, social activity, marshal art-judo karate, sports, athletic, adventure sports club. All these clubs organize various programmes throughout the year.

Next Year New Initiatives:

Moving towards autonomy, augmenting faculty exchange programmes in collaboration with other institutions. Publishing international/national journals and books by all research departments, starting IGNOU Post Graduate courses, national workshop on health issues, national workshop sponsored by MPCOST, emphasis on focusing e-learning materials, more collaborative research to be taken up with research institutes of international and national repute. Courses offered in future- PG Diploma in Hospital Management, B.Sc. Nursing, Diploma in tourism, Diploma in fine art, diploma in dancing, MA in All Arts Subject, M.Sc. in industrial Chemistry, Diploma in stress management, Diploma in pathology. National Seminar, workshop, symposium in various streams.

2. Overview (1 page)

- (i) Vision, Mission and Objectives of the college

Vision –

- Education prepares one to face the challenges of life by bringing out the best in students. If it is well accepted, education should be relevant to the needs of the time and address the problems of the day.
- Our vision is to make students with intellectual competence, interpersonal skills, personal skills and societal skills.
- To engaged in equipping individuals capable of building, learning and organizing.
- To diversify learning opportunities, enhance employability, offer qualifications and stimulate innovation, for the benefit of learners and society.

Mission –

- To develop human potential to its fullest extent so that intellectually capable and imaginatively gifted students can emerge in a range of scholars.
- To generate new knowledge by engaging in academic growth by offering state-of-the-undergraduate, postgraduate and doctoral programs.
- To undertake collaborative projects which offer opportunities for long-term interaction with academia and higher education.
- To develop competencies of students with moral value system to face challenges of the continually changing world.

➤ To provide quality and value based education.

Objectives-

- To inculcate national spirit and social responsibility
- To develop technical skill to face the challenges of society.
- To develop linguistic skill and computer awareness to face modern needs.
- To develop secular sprit and religious tolerance.
- To train the students to preserve nearby cultural heritage.
- To impart higher education to less privileged and deserving sections of rural areas near Hoshangabad areas including the SCs, STs and OBCs.

The aforesaid mission, vision and objectives are achieved through strenuous efforts made by teachers and staff with utmost zeal. The same is communicated to students, staff and other stakeholders through college brochure and website.

(ii) Brief introduction of the college (including the status (Govt. / Lead/ Constituent/ Affiliated/ Private), Parent University, UGC recognition, CPE status, etc), location & campus area ?

- Name – Govt. College Bankhadi Dist. Hoshangabad
- Status –
 - Government
 - UG. College - Only One Faculty B.A.
 - Affiliated by Barkatulla University Bhopal
- University – Barkatulla University Bhopal
- UGC Recognized
- Location – Bankhadi , Dist Hoshangabad Madhyapradesh
- Campus Area – 2.50 acre

(iii) History of the college with significant milestones

There is a shortage of higher education in rural areas. Due to this, the dream of achieving higher education of the poor and deprived group students is not fulfilled due to economic absence. They can not go to the city due to economic compulsions and leave studies in the middle. In view of these very parishes, our kind Chief Minister Shri Shivraj Singh Chahan ji announced the opening of the college in the year 2013 in Bankhadi Tehsil of Hooghangabad district on the demand of the students. The academic program started here from the year 2014. This college is in its vicinity right now. Only B.A. subject is. Now here are the students belonging to Scheduled Caste and Tribal Classes who are not able to study in the city. Most of these students also work in the fields to run the livelihood of the family after the completion of their classes.

(iv) Faculties and major disciplines

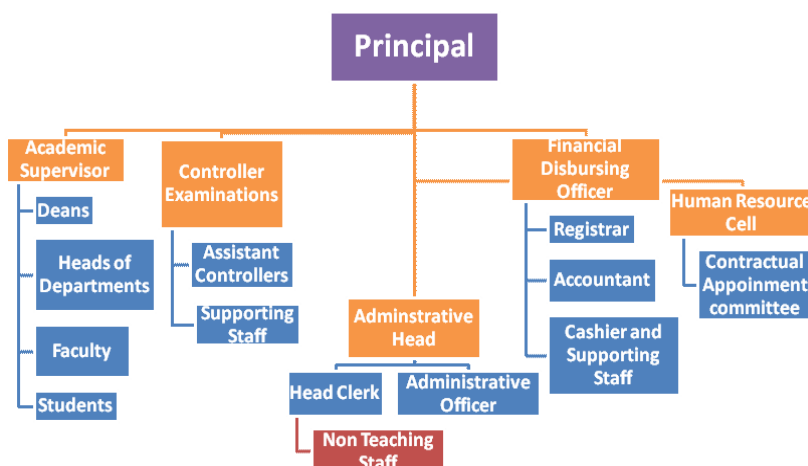
Sl.No.	Programme Level	Name of Programms/ Course	Duration	Entry Qualification	Medium Instruction
	Under graduate	BA	3 Yrs	12 th	As Per norms of higher education govt. of MP

3. Senior Management Team and Board of Governors (1 page)

Lists the members of the senior management team (Principal, Registrar, Deans etc.) and members of the Board of Governors including their designations and professional backgrounds.

Administrative Hierarchy

For example -:



List of Chairperson/members of Statutory Bodies like Board of Governors/ Executive Committee/ Academic Council/ Janbhagidari Samiti, etc

4. Admission Statistics (1 page)

- The number of applicants at the UG and PG level who ranked the college as their 1st, 2nd and 3rd preference, the number of applications received for PhD courses, and the number of students admitted at each level as per the following format.

Applications	UG	PG	PhD
Applications that ranked the college as the 1 st preference		NA	NA
Applications that ranked the college as the 2 nd preference			
Applications that ranked the college as the 3 rd preference			
Total number of applications received			
Number of students admitted	87	NA	

Data Source: E-pravesh portal, records of the affiliating university

- A brief demographic profile of students admitted (in terms of gender, caste, whether from MP etc.)

Name of Course	Gender	Category				% of Student form the state	% of students from other states
		SC	ST	OBC	Gen		
BA I	Mail/Female	27	7	42	11		

5. Academic Programs: Core Programs - UG & PG

Core programs at UG level

Stream	Name of the Core Program	Eligibility	Optional subjects
Arts	Bachelor of Arts	10+2 from a recognized Board	Foundation course + a group of 3 optional subjects

Core Options at PG level

Faculty	Name of the Core Program	Eligibility	Subject Options
Nil	Nil	Nil	Nil

M.Phil/ Ph.D. Programs

S.no.	Subject	Eligibility	No. of scholars registered
Nil	Nil	Nil	Nil

PG Diploma/ Diploma/ Certificate/ Self-financed/ Skill based Vocational/ Short term courses

Name of the Course	Department	Duration	Fees	Seats
Nil	Nil	Nil	Nil	Nil

6. Academic Calendar 2015-16

Academic Work	First/ Third/ Fifth Semester	Second/ Fourth/ Sixth Semester
Zero Classes/SWOT analysis	01 July – 13 July 2015	2 January 2016
Teaching and Continuous Comprehensive Evaluation	14 July – 7 Nov. 2015	03 Jan. – 25 April 2016
CCE Schedule	4 th week of Sep. 2015	2 nd week of March 2016
Preparation Leave	8 Nov. – 14 Nov. 2015	26 april – 27 april 2016
Practical Exams (Graduation/Post Graduation)	15 Oct. – 7 Nov. 2015	25 March – 25 april 2016
Semester and ATKT Exams	15 Nov. – 21 Dec. 2015	28 April – 26 April 2016
Declaration of Examination Results	Till 31 Dec. 2015	Till 15 June 2016
Semester Break (for students)	22 Dec. – 31 Dec. 2015	27 May – 30 June 2016
Semester Break (for teachers)	22 Dec. – 31 Dec. 2015	27 May – 15 June 2016

7. The Student Experience (4 pages)

Briefly describes student life in the college:

- Infrastructural facilities available to students - Classrooms, Smart classrooms, laboratories and equipment, Common Research Lab, Hostel; Canteen; Garden; Students common room, Auditorium, Sports Complex & other facilities
 - Classroom - 04
 - Smart Classroom – Nil
 - Laboratories and Equipments – Nil
 - Hostel – Nil
 - Canteen - Nil
 - Garden – Nil
 - Students Common room - Nil
 - Auditorium – Nil
 - Other Facilities – E- governance, Online Services, Kiosk Facility, MP Online Facility
- Library as a learning resource- advisory committee, its composition, facilities & services (e & print), annual improvement initiatives

- Advisory Committee –
 1. Dr. Ashish Billore – Coordinator
 2. Dr. Ajay Koushik – Member
 3. Shri Sushilchandra Dubey – Member
 4. Shri Krishna Lahrpure – Member
 5. Shri Anup Sahu – Member

- Facilities and Services –
 - Reprography Service
 - Facility Available for Competitive Exam
 - Related books in study room of library
 - Books transfer of departmental library
 - Free books distribution for SC/ST student
 - Free Wi-fi facility available on laptops and mobiles
 - Well maintained study room available
 - Group study E-matters through interactive board
 - Visual presenter facility available for group study
 - Paid photocopy facility available
 - Teacher Study Corner
 - Facility of OPAC
 - E-matters available offline
 - Past exam scanned papers available.
 - Subject syllabus available
 - Book issue facility available till exam based on security fee.

- Improvement Initiatives – According to funds of UGC and Higher Education Department.

- Student support services:
 - ✓ IT enabled services
 - Scholarship Facilities
 - Free stationary and free books for SC /St students
 - Remedial Coaching
 - Quality Assurance Cell
 - Sports Facilities
 - Morning Assembly, Thoughts of the day, book of the week and question of the day
 - Youth festivals and other important days
 - Literary and cultural activities
 - Students help desk
 - Anti ragging and discipline committee
 - Internet/wifi facility

- ✓ Financial assistance (scholarships/ schemes for SC/ST/OBC/ minority, Group & Health Insurance Schemes) (2015-16)
 - Gaon Ki beti yojna - No of Students 21, Amount –105000/-
 - Awagaman Yojna – No. of Students 44, Amount 45000/-
 - Post Metric Scholarship for SC – No. of Students 47, Amount 310332/-
 - Post Metric Scholarship for ST – No. of Students 17, Amount 113052/-
 - Post Metric Scholarship for OBC – No. of Students 53, Amount 249178/-
 - Health Insurance Schemes – No. of Students – 165 Amount -660/-

- ✓ Personal enhancement & development schemes- Facilities for physically challenged & slow learners; Tutor-Guardian Scheme, Grievance Redressal Cell, Entrepreneurship Cell, Remedial classes, Career Guidance Cell.
 - For Physically challenged students ramp facility available in college and washroom facility also available.
 - Special class are arranged in each academic year for slow learners in the college.
 - Tutor Guardian Scheme and grievance Redressal cell also actively working in the college. Each tutor guardian conduct meeting with students every month and tried to solve their problems as early as possible.
 - Swami Vivekanand Career Guidance Cell also supporting the students in their skills and organize several training programmes for students.

- ✓ Major student welfare initiatives over the past year
 - Scholarship facilities
 - Free stationery and free books for SC/ST Students
 - Remedial Coaching
 - Quality Assurance Cell
 - Sports Facilities
 - Morning Assembly thoughts of the day, book of the week and question of the day
 - Youth festivals and other important days
 - Literary and cultural activities
 - Students Help Desk
 - Anti Ragging and discipline committee
 - Internet /Wifi Facility

- Extension Activities

- According to Higher Education activity calendar: Plantation, student help camp, orientation, cleanness camp, Independence Day, Komi ekta saptah, no addiction program, AIDS day, Youth day, Republic day, Helth Camp, Nutrition week, etc

8. Student Achievements

Highlights the most significant academic and non-academic achievements of students over the past year. This can include major academic awards and scholarships received student research, and sports and other extracurricular activities. Focuses, in particular, on profiling top achievers and describing how resources provided by the college helped these students succeed.

ACADEMIC

- First Div.

S.no	Name of the recipient	Class	Area of achievement
1	कु. जानकी पटैल	बी.ए. प्रथम वर्ष / प्रथम सेमेस्टर	First Position in Class
2	कु. कविता पटेल	बी.ए. प्रथम वर्ष / प्रथम सेमेस्टर	
3	कु. हर्षा राय	बी.ए.द्वितीय / तृतीय सेमेस्टर	
4	मालती कुशवाहा	बी.ए.द्वितीय / तृतीय सेमेस्टर	
5	हेमन्त विश्वकर्मा	बी.ए.द्वितीय / तृतीय सेमेस्टर	

Research scholarship/ award

S.no	Name of the scholarship award/	Name of the recipient	Class	Area of research
1	Nil	Nil	Nil	Nil

CULTURAL

- Participation

S.no	Name of the event	District Level	State Level	University	National Level
1	Quiz	02	03		
2	Cartooning	01	01	01	
3	Group Dance	04			
4	Speech	01			

- Awards and Achievements

Name of the student	Class	Event	Award/Achievement

SPORTS

- Participation

S.no	Name of the event	Division Level	State Level	University/ National Level	International Level
1	Cricket	02			
2	Chess	04			
3	Wholibal	01			
4	Athletics	02			

- **Awards and Achievements**

Name of the student	Class	Sport	Award/Achievement

9. Research Activities (4 pages)

Identifies major research themes, places these themes in their social and economic context, highlights major research achievements (publications, collaborations, intellectual property produced, external funding received etc.), and profiles top researchers. Lays out the research agenda and identifies themes for the coming year.

- **Major research themes**

S. No.	Department	Prioritized research area and expertise	Social/ economic context
	<i>Nil</i>	<i>Nil</i>	<i>Nil</i>

- **Major/Minor research projects**

S. No	Name of the Faculty	Year	Title of the project	Name of funding Agency/ Industry	Total grant received
	N/A	N/A	N/A	N/A	N/A

- **Papers presented in regional, national and international seminars/ conferences**

S. No.	Name of the faculty	Regional/ State	National	International
1	Dr. Ashish Billore	04	08	03
2	Dr. Ajay Koushik	02	01	
3	Shri Krishna Lahrpure	01	01	Nil
4	Shri.S.C. Dubey	02	01	Nil
5	Shri Anoop Sahu	01	01	0

- **Publications in national/ international journals**

S.No.	Name of the faculty	Number of pub.	Name of the journal	Title of the paper	ISSN/ ISBN number /Impact factor
1	Dr. Ashish Billore	04			
2	Dr. Ajay Koushik	02			
3	Shri Krishna Lahrpure	01			
4	Shri.S.C. Dubey	02			
5	Anoop Sahu	01			

- **List of linkages/ Collaborations/ MOUs**
 - Mahila bal vikas hoshangabad
 - Krashi vaigyanik Kendra Bankhadi dist Hoshangabad
 - Jila Udhog Kendra, Hoshangabad
 - Resham Kendra Bankhadi
 - Suggester and Rice Industries Bankhadi
- **College Publications: Newsletter**
 - Newsletter – Mahavidhyalay Samachar Darshan (Quarterly)

10.Human Resources

Highlights senior faculty and administrative appointments. Describes what new areas of activity (new courses, research areas, extracurricular activities etc.) and administrative improvements are enabled by these appointments.

1. Faculty and Administrative appointments: Teaching and Non-teaching

Positions	Teaching Faculty				Non Teaching Faculty	Technical Staff
	Prof	Promoted Prof	Assistant Prof	Guest Faculty		
Sanctioned by UGC/ University/ State Govt						
<i>Section</i>	01	00	06	07	06	N/A
<i>Filled</i>	00	00	01	05	03	00
Sanctioned by Management/ Janbhagidari Samiti/ Other authority	-	-	00	-	00	00
<i>Filled</i>						

2. Guest Faculty : subject-wise appointments

S.no.	Name of the Guest Faculty	Qualification	Subject
1	Dr. Ajay Kushik	Ph.D.	Political Sc.
2	Shri.S.C. Dubey	SLET	History
3	Shri Krishna Lahrpure	M.Phil.	Economis
4	Dr. Ashish Billore	Ph.D.	Library & Information Science
5	Anoop Sahu	M.Phil.	Physical Education

3. Annual improvement in academic, research & administrative Initiatives

- **Academic –**
 - Meritorious students -00
 - First Division Students – 05

- **Research –**
 - **Research Centre – N/A**
 - **No. of Students Enrolled – N/A**

11.Events and Initiatives

Describes major events including seminars, conferences, competitions, student study trips etc. Focuses on what was achieved and learned, and how the college will follow up.

Describes significant academic, administrative, student support, fundraising, and other initiatives over the past year. The description of each initiative will be structured around the need for the initiative, how it was designed, what resources were used, what results were achieved, and which features of the initiative drove success.

- Educational tour for UG Students organized by department of History in session 2015-16, there are 15 students, 01 Guest Faculty teacher and supporting staff participated in educational tour.
- Educational tour for UG Students organized by department of Sociology work in Session 2015-16. There are 12 students, 01 Guest Faculty teacher and supporting staff participated in educational tour.

12. Institutional Development plan (4 pages)

Describes the college’s activities over the past year under different schemes, discusses performance against strategic/institutional development plans and commitments over the previous year.

Indicator*	Baseline Value	Target for [current year]	Value as on 30th September [current year]

Role of Internal Quality Assurance Cell (IQAC) in academic audit and initiating quality assurance strategies and processes

- Seminars
- Workshop
- Short term courses
- Educational Tour
- Vocational Training Courses

13. Placement Report

Describes the college’s placement cell activities, placement rate and salary statistics, and lists major employers and sectors of employment (disaggregated by gender and course studied). Profiles successful alumni and identifies emerging placement trends.

Activities of Placement Cell

S.no.	Name of the activity	Name of the Resource Person/ agency	Date & Duration
1	Insurance, Banking and Job opportunities in commerce	Mr. Navneet Dalani, Center Head, NIIT Hoshangabad Mr. Lokesh Sahu, Director NIIT Bhopal	28-09-2015
2	How to make resume, preparation of interview	Mr Navneet Dalani, Center Head NIIT HOshagabad	07-10-2015
3	Career Counseling Lecture of MP PSC Exam Related	Mr. Drashtipal Singh, Lakshy Classes Hoshangabad	28-01-2016
4	Preparation of Competitive exam	Mr. Nitin Soni, Area Manager Indore Mr. Prateek paliwal Branch manager Pinnacle Institute Hoshangabad	26-02-2016
5	Common GK Test	Mr. Drashtipal Singh, Lakshy Classes Hoshangabad	29-02-2016
6	Preparation of Railway Banking Competitive exam	Richa Dubey, RAhul Singh, Praveen Yadav, Prabhakar Dixit Mahindra Educational Private Ltd.	16-03-2016

Placement Details

S.no.	No. of Students Selected	List of employers/companies	Salary Package
1	Manoj Viswakarma	Supervisor	8000
2	Pooja Patel	Clerk in post office	15000
3	Rajkumari Kushwaha	ICICI Bank	10000
4	Monika Choudhray	Clerk in private school	5000
5	Manish Javre	Clerk in Railway	25000
6	Shivam Soni	Computer Operater In Nager Parisad	10000
7	Narmada Prasad	Forest Gard	15000
8	RajaRam	Army	25000
9	Sourav Bathre	Army	25000
10	Nikki Bhargav	M.P. Police	25000

Alumni Profile

S.no.	Name of Alumni	Employment status	Name of the organisation
1	Nil	Nil	Nil

14. Innovations and Best Practices

1. Student support – scholarship, free stationary and free books for SC /ST students, Remedial Coaching, Quality Assurance Cell, Sports Facility, Youth Festival and the celebration of important Days, Literary and cultural Activities, student help desk, anti-raging and discipline committee, internet and Wifi facility, tutorial and remedial coaching, special study materials have been made by the teaching staff and distributed among students. Classes for weak students are being organized under the scheme of UGC.
2. Social Activity - 54 students are registered, students are involved in “Swachta Abhiyan and Pulse-polio programme.
3. Social work – There are Social work Units in this college. Programmes are organised according to Social work activity calendar. These activities are plantation, orientation, cleanliness camp, Independence Day Celebration, Komi Ekta Saptah, Aids Redribben Activity, Health Checkup camp, Nutrition week, world food day, world environment day. One day Camp visit in Anath Ashram, Old Age Home and various cultural activities held in the college and society.
4. Vivekanand Career Counselling Cell conducts several programmes like Koushal vikas programme, Guideline for personality development, career awareness- Reasoning, Group discussion, formal dressing, soft toys training, Making Candle and Stick Training, Banking, Insurance, Social work, Designing, preparation of interview, resume preparation.
5. Redressal Cell - There are Students and women Grievance Redressal Cell, anti raging committee, discipline committee
6. Quality extension activity – The Department of Higher Education of MP observed 2011-12 as quality year and 2012-13 as quality extension year. According to Higher Education Department of MP guidelines QEC emphasises on SWOC (Strength, weakness, opportunities and challenges) analysis, self-evaluation by teachers, promoting modern technologies, language improvement, setting up Pratibha bank, promoting awareness programmes, zero classes, language improvement classes in Hindi and English. Prominent Guest: the college invites eminent researchers and scholars, doctors, businessmen and experts on different occasions to interact with students.
7. Personality development Cell – The Department of Higher Education of MP launched a new concept of personality development of students named “drashti badalne se srashti badlegi”. Programmes are organised according to personality Development Cell activity calendar. This view is being embodied by establishing personality development cell which plays an important role in developing overall personality of the student. The cell emphasises on inculcating moral values, imbibing characteristics of Indian culture, preserving cultural heritage Yuva panchayats are organized, news letter “mahavidhyalay samachar darshan”. Awareness programmes

on various issues of society and psychological programmes are conducted which play a very important role in overall personality development of the students.

8. Library Facility – In the college library reprography service, N-list membership, materials for competitive exams, study room facility, group study e-matters through interactive board, visual presenter facility, paid photocopy facility, facility of OPAC, E-resource center facility, e matter, subject syllabus, teachers study corner, book issue facility are available till exam based on security fee.
9. Sports – The sports department of the college conducts state kabaddi tournament, special training program of JUDO-KARATE, aerobic, Yoga for physical and mental health, district level sports and celebration of sport day.
10. Examination and Semester Cell – It monitors Online CCE, Project and Practical Marks, universities exam etc.
11. Community Linkage – Students of Social Work Department of the college undertakes several activities with NGO, vridhha ashram and anath ashram. Students are linked with mahila balvikas, hospital, fitness centre and Krishi vigyan Kendra Bankhadi, soil testing centre- Krishi Vigyan Kendra pawarkheda, seri culture centre Goveng Nager and Bankhadi, Rice Mill. Programmes are organized in the college by various linked departments cash prizes and certificates are given to the students in every programme every year.
12. Club Activity - College runs 10 clubs for overall personality development of the students. They are group discussion and debate club, creative writing, book reading, GK test, computer awareness, language skill development, cleanliness, publication and media, environment awareness, idea club, internet, performing and visual art club, yoga, social activity, marshal art-judo karate, sports, athletic, adventure sports club. All these clubs organize various programmes throughout the year.

Future Plans – Moving towards autonomy, augmenting faculty exchange programmes in collaboration with other institutions. Publishing international/national journals and books by all research departments, starting IGNOU Post Graduate courses, national workshop on health issues, emphasis on focusing e-learning materials, more collaborative research to be taken up with research institutes of international and national reputes. Courses offered in future- B.Sc. Nursing, BCA, MCA, Diploma in tourism, Diploma in fine art, diploma in dancing, Hotel Management, MA in All Arts Subject, M.Sc. in industrial Chemistry, Diploma in stress management, Diploma in pathology, National Seminar, workshop, symposium in various streams.

13.SWOC Analysis (strength , weaknesses, Opportunity and Challenges

STRENGTHS

- Reputation of being a growing institution which has created benchmarks in the domain of education and empowerment of rural student for the past three years.

- The wide popular acceptance and recognition as leaders in women education in rural area. Led the path to education and became the model for other institutions in the region.
- Multiple student centric programmes comprising contemporary as well as futuristic global practices in academics, co-academics and sports for holistic growth. New disciplines and courses synchronized with present day demands.
- Thrust on quality value-based education through healthy practices like power points and computers.
- ICT enabled interactive and participatory delivery practices to suit the needs of the heterogeneous groups of students in an automated campus with an impressive range of the well stocked library with special focus on innovative interdisciplinary programmes and projects relevant to society.
- Research culture and academic ambience on the campus by the visits of eminent scholars and acclaimed academicians during national seminars. Promotion of research aptitude among students under the guidance of highly qualified faculty.
- Numerous facilities, scholarships and financial aid available to meritorious, deserving students and outstanding sports persons.
- Strong mentoring and student support system taking care of all students campus needs on the campus extending even to medical care and wellness safe and secure haven for growth and development of women.
- Focus on personality development of each student through development of positive attitude, leadership qualities and self-awareness.
- Vibrant atmosphere conducive to all round development of students.
- Environment friendly, Anti-pollution and initiatives to maintain pollution-free, ecofriendly 'Clean and Green Campus'.

WEAKNESS

- Controlled Procedures to introduce new programmes at UG and PG level due to affiliation with University.

OPPORTUNITIES

- Exchange of knowledge across the institutions in the areas.
- Broad knowledge scenario in the wake of liberalization and use of ICT to reach out to the global pool of knowledge.

CHALLENGES

- Limitation and constraint in government financial support.
- To motivate the faculty and staff for changing and progressive paradigms in Higher Education.
- New mushrooming private institutions.

14. Looking Ahead ; Future Plans

Lays out the college's priorities and goals over the coming year. Describes key initiatives planned, what each initiative is expected to achieve, and how it will contribute to the college's long term development.

- Future Plans – Moving towards autonomy, augmenting faculty exchange programmes in collaboration with other institutions. Publishing international/national journals and books by all research departments, starting Post

Graduate courses, national workshop on Different issues, national workshop sponsored by UGC, emphasis on focusing e-learning materials, more collaborative research to be taken up with research institutes of international and national repute. Courses offered in future- PG Courses, B.Sc. Nursing, MCA, MBA, Diploma in tourism, Diploma in fine art, diploma in dancing, Hotel Management, MA in home Science, M.Sc. in industrial Chemistry, Diploma in stress management, Diploma in patholog. National Seminar, workshop, symposium in various streams.

Key Initiatives Planned/ implemented

S. No	Head (administrative/ academic, etc)	Nature of proposal	Expected Outcome
1	B.Com	Academic	200000
2	B.Com Comp.	Academic	200000
3	B.Sc. Nursing	Academic	200000
4	B.Sc. Bio & Math	Academic	200000
5	Diploma in Tourism	Academic	200000
6	Diploma in fine Art	Academic	200000
7	Diploma in Dancing	Academic	200000
8	Diploma in NGO	Academic	200000
9	MA in Hindi Let.	Academic	200000
10	MA in Eco.	Academic	200000
11	MA in Eng. Let.	Academic	200000
12	Dip. in Stress Mgmt.	Academic	200000

15. Appendix: Institutional Performance Data and Financial Reports

Provides key data on the institution and its performance, including achievement against strategic plan targets and financial reports. This section is mandatory. All data fields must be completed, in the format and as per the instructions attached.

Part II

Appendix: Institutional Performance Data and Financial Reports (all part II data kindly fill in attached excel sheet)

1. Sanctioned seats 125 and enrolment 121 in Year **2016-17**

(a) Sanctioned Seats					
	SC	ST	Other Reserved Categories	General	Total
Undergraduate					
Postgraduate					
PhD					

Data Source: AISHE

(b) Enrolment							
		Undergraduate			Postgraduate		PhD
		Year 1	Year 2	Year 3	Year 1	Year 2	
SC	Male						
	Female						
ST	Male						
	Female						
Other Reserved Categories	Male						
	Female						
General	Male						
	Female						
Total	Male						
	Female						

Data Source: AISHE

Number of sanctioned seats by discipline group and enrolment in the 1st year as on September 30th [current year]2016-17				
Discipline Group	Undergraduate		Postgraduate	
	Sanctioned Seats	Enrolment	Sanctioned Seats	Enrolment
Arts	125	121	NA	NA
Commerce				
Criminology and Forensic Science				
Cultural Studies				
Defence Studies				
Design				
Disability Studies				
Education				
Fashion Technology				

Fine Arts				
Fisheries Science				
Foreign Languages				
Gandhian Studies				
Home Science				
Indian Languages				
IT & Computer				
Journalism and Mass Communication				
Law				
Library and Information Science				
Linguistics				
Management				
Marine Science and Oceanography				
Oriental Learning				
Physical Education				
Religious Studies				
Science				
Social Science				
Social Work				
Women Studies				

Data Source: AISHE

2. Transition and on-time graduation

(a) Transition from the 1st year to the 2nd year (Undergraduate)				
		Number of students admitted to the 1st year in [the previous academic year] (*)	Of (*), the number of students currently enrolled in the 2nd year who:	
			Passed all subjects in the 1st year	Were Allowed to Keep Terms
SC	Male			
	Female			
ST	Male			
	Female			
Other Reserved Categories	Male			
	Female			
General	Male			
	Female			
Total	Male			
	Female			

Data Source: AISHE, examination results declared by [affiliating university/autonomous college]

(a) Transition from the 1st year to the 2nd year (Postgraduate)				
		Number of students admitted to the 1 st year in [the previous academic year] (*)	Of (*), the number of students currently enrolled in the 2 nd year who:	
			Passed all subjects in the 1 st year	Were Allowed to Keep Terms
SC	Male			
	Female			
ST	Male			
	Female			
Other Reserved Categories	Male			
	Female			
General	Male			
	Female			
Total	Male			
	Female			

Data Source: AISHE, examination results declared by [affiliating university/autonomous college]

(b) On-time graduation (Undergraduate)				
		Number of students admitted to the 1 st year in [year t-3] (*)	Of (*), the number of students who passed all final year examinations for the previous academic year	
SC	Male			
	Female			
ST	Male			
	Female			
Other Reserved Categories	Male			
	Female			
General	Male			
	Female			
Total	Male			
	Female			

Data Source: AISHE, examination results declared by [affiliating university/autonomous college]

(b) On-time graduation (Postgraduate)			
		Number of students admitted to the 1st year in [year t-2] (*)	Of (*), the number of students who passed all final year examinations in the current year
SC	Male		
	Female		
ST	Male		
	Female		
Other Reserved Categories	Male		
	Female		
General	Male		
	Female		
Total	Male		
	Female		

Data Source: AISHE, examination results declared by [affiliating university/autonomous college]

3. Faculty and administrative staff in position and training

(a) Faculty and administrative staff in position as on 30th September, [current year]							
		Reserved					Unreserved
		SC	ST	MP Resident s	Female s	Others	
Assistant Professor	Sanctioned						
	Filled (Regular)						
	Filled (Contract)						
	Guest Lecturers						
Associate Professor	Sanctioned						
	Filled (Regular)						
	Filled (Contract)						
	Guest Lecturers						
Professor	Sanctioned						
	Filled (Regular)						
	Filled (Contract)						
	Guest Lecturers						
Admin.	Sanctioned						

Staff (all)	Filled (Regular)						
	Filled (Contract)						
Accountant	Sanctioned						
	Filled (Regular)						
	Filled (Contract)						

Data Source: AISHE

(b) Training of faculty and administrative staff between October 1st [previous year] to September 30th [current year]				
		Leadership and management training	Training in the area of academic specialisation	Other training
Assistant Professor	Number trained			
	Avg. number of days			
Associate Professor	Number trained			
	Avg. number of days			
Professor	Number trained			
	Avg. number of days			
Administrative Staff (all)	Number trained		N/A	
	Avg. number of days		N/A	
Accountant	Number trained		N/A	
	Avg. number of days		N/A	

Data Source: Compiled from training certificates submitted by faculty/administrative staff

(c) Faculty qualifications as on 30th September, [Current Year]					
		PhD	Postgraduate	Undergraduate	Others
Assistant Professor	Regular				
	Contract				
	Guest Lecturers				
Associate Professor	Regular				
	Contract				
	Guest Lecturers				
Professor	Regular				
	Contract				
	Guest Lecturers				

Data Source: AISHE

4. Student support services

(a) Financial support received (from all sources) by students in the college between October 1st [previous year] to September 30th [current year]							
		Undergraduate		Postgraduate		PhD	
		Number	Average Value (Rs.)	Number	Average Value (Rs.)	Number	Average Value (Rs.)
SC	Male						
	Female						
ST	Male						
	Female						
General	Male						
	Female						
Total	Male						
	Female						

Data Source: AISHE

(a) Financial support received, from the DHE, by students in the college between October 1st [previous year] to September 30th [current year]							
		Undergraduate		Postgraduate		PhD	
		Number	Average Value (Rs.)	Number	Average Value (Rs.)	Number	Average Value (Rs.)
SC	Male						
	Female						
ST	Male						
	Female						
General	Male						
	Female						
Total	Male						
	Female						

Data Source: College records, DHE

(b) Hostel occupancy as on 30th September, [Current Year] (all hostels)		
Capacity		Number of residents
Males:		
SC	Male	
	Female	
ST	Male	
	Female	
General	Male	
	Female	
Total	Male	
	Female	

Data Source: Hostel register verified against fee receipts on record

(c) Hostel occupancy as on 30th September, [Current Year] (girls only hostels opened after _____)	
Capacity	Number of residents
SC	
ST	
General	
Total	

Data Source: Hostel register verified against fee receipts on record

5. Examination Results

(a) Examination results for [previous academic year] (undergraduate)											
		SC		ST		Other Reserved Categories		General		Total	
		M	F	M	F	M	F	M	F	M	F
1st year	Appeared										
	1 st division										
	2 nd Division										
	3 rd Division										
2nd year	Appeared										
	1 st division										
	2 nd Division										
	3 rd Division										
3rd year	Appeared										
	1 st division										
	2 nd Division										
	3 rd Division										

Data Source: AISHE, Examination results declared by [affiliating university/autonomous college]

(a) Examination results for [previous academic year] (postgraduate)											
		SC		ST		Other Reserved Categories		General		Total	
		M	F	M	F	M	F	M	F	M	F
1st	Appeared										

year	1 st division										
	2 nd Division										
	3 rd Division										
2nd year	Appeared										
	1 st division										
	2 nd Division										
	3 rd Division										

Data Source: AISHE, Examination results declared by [affiliating university/autonomous college]

6. Placement and student tracking

(a) Placement and Tracking of Students who graduated in [previous academic year] (Undergraduate)		Number of students who graduated in [the previous academic year] (*)	Of (*), the number of students who were successfully tracked and are:			
			Employed/ Self-employed	In education/ training	Unemployed	Not in the labour force
SC	Male					
	Female					
ST	Male					
	Female					
General	Male					
	Female					
Total	Male					
	Female					

Data Source: Records of the college placement cell

(b) Placement and Tracking of Students who graduated in [previous academic year] (Postgraduate)		Number of students who graduated in [the previous academic year] (*)	Of (*), the number of students who were successfully tracked and are:			
			Employed/ Self-employed	In education/ training	Unemployed	Not in the labour force

SC	Male					
	Female					
ST	Male					
	Female					
General	Male					
	Female					
Total	Male					
	Female					

Data Source: Records of the college placement cell

7. PhDs Awarded

Number of PhDs awarded between October 1st [previous year] to September 30th [current year]	
Discipline Group	Number
Arts	
Commerce	
Criminology and Forensic Science	
Cultural Studies	
Defence Studies	
Design	
Disability Studies	
Education	
Fashion Technology	
Fine Arts	
Fisheries Science	
Foreign Languages	
Gandhian Studies	
Home Science	
Indian Languages	
IT & Computer	
Journalism and Mass Communication	
Law	
Library and Information Science	
Linguistics	
Management	
Marine Science and Oceanography	
Oriental Learning	
Physical Education	
Religious Studies	
Science	
Social Science	
Social Work	
Women Studies	
Literature	

Other	
All disciplines	

Data Source: AISHE

8. Research and consultancy

Revenue generated through externally funded research and consultancies over [previous financial year]		
Discipline Group	Number of active projects	Total Revenue Generated (Rs. lakhs)
Arts		
Commerce		
Criminology and Forensic Science		
Cultural Studies		
Defence Studies		
Design		
Disability Studies		
Education		
Fashion Technology		
Fine Arts		
Fisheries Science		
Foreign Languages		
Gandhian Studies		
Home Science		
Indian Languages		
IT & Computer		
Journalism and Mass Communication		
Law		
Library and Information Science		
Linguistics		
Management		
Marine Science and Oceanography		
Oriental Learning		
Others / Inter-disciplinary		
Physical Education		
Religious Studies		
Science		
Social Science		
Social Work		
Veterinary and Animal Sciences		
Women Studies		
All disciplines		

Data Source: College/university records

Number of papers published in peer-reviewed journals between October 1 st [previous year] to September 30 th [current year]			
Discipline Group	Number of papers published		Number of published papers through cross-institute research collaboration
	International Journals	National Journals	
Arts			
Commerce			
Criminology and Forensic Science			
Cultural Studies			
Defence Studies			
Design			
Disability Studies			
Education			
Fashion Technology			
Fine Arts			
Fisheries Science			
Foreign Languages			
Gandhian Studies			
Home Science			
Indian Languages			
IT & Computer			
Journalism and Mass Communication			
Law			
Library and Information Science			
Linguistics			
Management			
Marine Science and Oceanography			
Oriental Learning			
Others / Inter-disciplinary			
Physical Education			
Religious Studies			
Science			
Social Science			
Social Work			
Women Studies			
All disciplines			

Date Source: College records based on published papers submitted by faculty

9. NAAC accreditation and UGC autonomy

	Date of Application (LOI & SSR submitted)	Date on which accreditation was received	Grade	Valid till
1 st Cycle				
2 nd Cycle				
3 rd Cycle				

Date of submission of the Annual Quality Assurance Report for the current year: _____.

Does the college have currently valid UGC autonomy? _____. If yes, by order number _____, dated _____.

10. Institutional Trends

Variable	Baseline Value	[Year 1]	[Year 2]	[Year 3]	[Year 4]	Current Year
Percentage of sanctioned seats in the 1 st year filled (undergraduate, all categories)						
Percentage of sanctioned seats in the 1 st year filled (postgraduate, all categories)						
Transition rate from the 1 st year to the 2 nd year (undergraduate, all categories)						
On-time graduation rate (undergraduate, all categories)						
Transition rate from the 1 st year to the 2 nd year (post graduate, all categories)						
On-time graduation rate (postgraduate, all categories)						
Regular faculty in position rate (all levels, reserved categories)						
Regular faculty in position rate (all levels, unreserved categories)						
Percentage of regular faculty with PhDs (all levels)						
Employment rate of graduates from the previous academic year (undergraduate, all categories)						

Employment rate of graduates from the previous academic year (postgraduate, all categories)						
Percentage of total revenue generated through externally funded research						
Number of papers published in peer-reviewed, international journals						

Source: Tables under section 1-8.

11. Financial Reports

Name and registration number of the auditor _____.

Number of audit observations recorded by the auditor _____.

Number of audit responses found satisfactory, as certified by the project directorate_____.

Certified audit reports as per the standard Chart of Accounts to be attached.

12. All India Survey of Higher Education

Date on which all applicable fields of the Data Collection Format for the All India Survey of Higher Education were completed and submitted _____

Instructions

- All data is to be reported as on 30th September of the current year.
- Postgraduate courses refer to courses at the Masters and MPhil level.
- The number of sanctioned seats is the number of students the college is authorized, by the UGC/DHE/affiliating University, to admit in the first year of its degree programs.
- The number of sanctioned faculty posts is the number of faculty the college is authorized, by the UGC/DHE/affiliating University, to recruit on a full-time basis.
- Enrolment is defined as the number of students who have paid their admission fees for joining a degree program by September 30 of the respective academic year.
- Admission is defined as the number of students who have paid their admission fees for joining a degree program, in the first year, by September 30 of the respective academic year and who have never been enrolled in that degree program previously.
- Other Reserved Categories include all categories of students (for e.g. sports quota, extracurricular quota, residents of Jammu and Kashmir etc.) for whom a fixed percentage of sanctioned seats are reserved.

- Examination results are to be reported for examinations held in the previous academic year, and the results for which were declared by 30th September of the current year.
- Allowed to keep terms refers to students who did not pass all subjects in the previous year but were allowed to transition to the next year of their respective degree programs.
- Regular faculty refers to faculty employed on open-ended, full-time contracts as per UGC norms.
- Contract faculty refers to faculty employed on fixed term, full-time contracts as per UGC norms.
- Guest Lecturers refers to faculty employed on a per lecture or per day basis as per UGC norms.
- Data on scholarships is to be reported on all scholarships awarded between 1st October of the previous year and 30th September of the current year.
- A hostel seat is considered occupied if a student has been allotted a seat in the hostel and the student, to whom the seat was allotted, has paid the hostel fee for the current academic year.
- Examination results refers to the average score obtained by a student, in the respective academic year, across all exams that are used to assess whether the student has met the requirement of the degree program in which he/she is enrolled.
- Student tracking refers to having up to date contact information (mobile phone and/or email address) and status (employment, unemployed, in formal education or training, not in the labour market/other) for each student for up to six from the end of the academic year when the student passed out (graduated).
- Externally funded research and consultancies refer to research and/or development funded through consultancy contracts or partnerships with a sponsor or purchaser who is external to the institution.
- A peer-reviewed journal is one that subjects an author's research to review and evaluation by others who are experts in the same field, before the research is published.
- An international journal is one that has an International Standard Serial Number (ISSN) issued by the ISSN International Centre.
- A paper is said to be published through cross-institute research collaboration if the primary affiliation of at least two authors is to different colleges/institutions.
- The institutional performance indicators common across all institutions can be found in the PIP. Institution-specific performance indicators can be found in the MOU signed between the Institution and the Department of Higher Education.
- The standard Chart of Accounts refers to the standard format for audit reports as notified by the Department of Higher Education through its orders.