

Annual Report 2016

This format outlines the annual reports to be published by all colleges in the Madhya Pradesh on their websites, by October 31st of each year. Part I is intended as a guide and colleges are free to alter the contents and format as they see fit. Part II, the Appendix (Institutional Performance Data and Financial Reports), is mandatory and colleges are required to report all data as per the attached format and instructions.

Important Information –

- Name of the college -GOVT COLLEGE SUKHTAWA
- Place of the college -SUKHTAWA
- District -HOSHANGABAD
- Division -BHOPAL -HOSHANGABAD
- Year of establishment of college -2011
- Name and Contact details(Mail id , Phone) of Principal -DR.RATNA DE RAY
MOBILE NO-7223056473
EMAIL ID -govt.collegesukhatawa2gmail.com
- Name , Post and Contact details of
(mail id, Phone no.) of Reporting In charge -DR.SHEELA THAKUR ASST PRO.HINDI
- Date of report submission -15/02/2018

Part I

- 1. The Principal's Report (2 pages)-** Highlights the key activities, events, and successes of the past year and briefly describes major new initiatives to be undertaken over the next year.

1-Teachng method-diagram ,notes, model question papers ,computer, visuailiger, LCD ,SOLVED ANSWER OBJECTIVE etc.

2-LABORATORY EXPERIMENT-microscopic study , etc.
over,head,projector,chromotograpy,microtome,dissection,chart,preparation,
biochemical test,blood group test etc.

3-Evalution method-class test,viva,graph,dissection cce,brief and
long,answer,project.chart,role,play,scanner,topic,display,of diagram, an
black board,

4-preparation of recourse material inducing books reading material

laboratory manual etc making temporary display of diagram of board model chart ,books note . etc.
 remedial trading student classes library consultation role play by student flow chart display of presentation of topic of the day, each student solved model question paper and objective question.
 pprotest against women's exploitation aware program for health education ,national literacy mission-encouragement for work nss social activities social work to literate college student to be a good citizen .arrange education of Three year ug student by practical knowledge. etc.

2. Overview (1 page)

(i) Vision, Mission and Objectives of the college

<u>Vision</u>	To develop a dynamic personality to women & Girls to make them grab Global Opportunity.
<u>Mission</u>	To develop attitude & aptitude for competition To develop self confidence. To make employees self sufficient for better service to students. To develop social & environmental awareness. To Covert students potential into productivity.

(ii) Brief introduction of the college (including the status (Govt. / Lead/ Constituent/ Affiliated/ Private),Parent University, UGC recognition, CPE status, etc), location & campus area

Status	: Government College.
Affiliated by	: Barkatullah Vishwavidhyalaya,Bhopal
Recognized by	: University Grant Commission
Established	: July-2011
Built up Area	: 5 acor

(iii) History of the college with significant milestones

- College was established in 2011
- College started with BA in Hindi Literature, Political Science, Sociology, Economics, & BCOM-PLAN
- Later in 2012 new courses BSC BIO & Maths

(iv) Faculties and major disciplines

Disciplines- B.A., B.Com, Bsc

Faculties:-

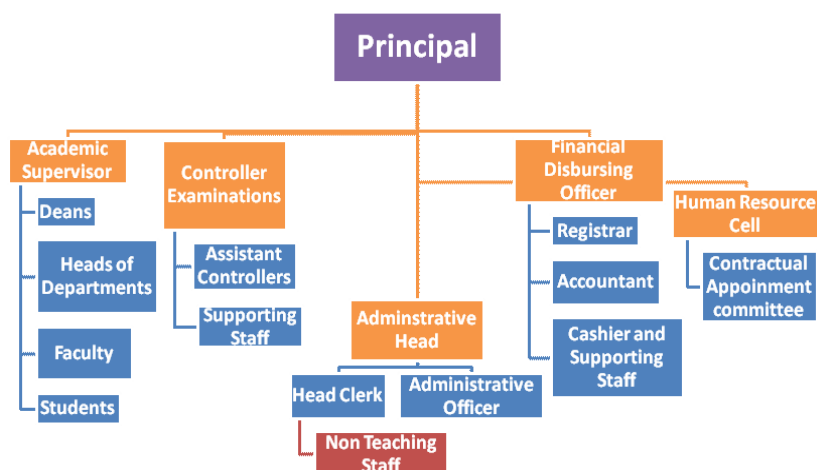
1. Zoology-Dr.Ratna de ray
2. Commerce-Dr.L.N.Parashar
3. Economics-Dr.B.D.Khatarkar
4. Hindi-Dr.Sheela Thakur
5. Sociology-Dr-Saroj Jawalkar
6. Political Science-Shri Sailendra Vasnik
7. Botany-Dr.Rajesh Arya
8. English-Smt.Sandhya Upadhyay
9. Commerce-Shri Rajesh Bhatiya
10. Commerce-Sudarshna Raj
11. Chemistry -Shri Ramesh Pahade
12. Physics-Deepshikha Kedare
13. Maths-Shri Ved Prakash Bharadwaj
14. Sports Officer-Shri R.A.Pande

3. Senior Management Team and Board of Governors (1 page)

Lists the members of the senior management team (Principal, Registrar, Deans etc.) and members of the Board of Governors including their designations and professional backgrounds.

Administrative Hierarchy

For example -:



List of Chairperson/members of Statutory Bodies like Board of Governors/
Executive Committee/ Academic Council/ Janbhagidari Samiti, et

4. Admission Statistics (1 page)

- The number of applicants at the UG and PG level who ranked the college as their 1st, 2nd and 3rd preference, the number of applications received for PhD courses, and the number of students admitted at each level as per the following format.

Applications	UG	PG	PhD
Applications that ranked the college as the 1 st preference	40%	NIL	NA
Applications that ranked the college as the 2 nd preference	40%	NIL	
Applications that ranked the college as the 3 rd preference	20%	NIL	
Total number of applications received	480	NIL	
Number of students admitted	480	NIL	

Data Source: E- pravesha portal, records of the affiliating university

- A brief demographic profile of students admitted (in terms of gender, caste, whether from MP etc.)

Name of the Course	Gender	Category	% of students from the State	% of students from other states
BA-1	MALE-68 FEMALE-72	SC/SCT/OBC/GEN	100%	NO
BA-2	MALE-47 FEMALE-66			
BA-3	MALE-38 FEMALE-25			
BCOM-1	MALE-19 FEMALE-08	SC/SCT/OBC/GEN	100%	NO
BCOM-2	MALE-15 FEMALE-13			
BCOM-3	MALE-05 FEMALE-05			
BSC -1	MALE-37 FEMALE-45	SC/SCT/OBC/GEN	100%	NO
BSC-2	MALE-38 FEMALE-40			
BSC-3	MALE-17 FEMALE-26			

5. Academic Programs: Core Programs - UG & PG

Core programs at UG level

Stream	Name of the Core Program	Eligibility	Optional subjects
Arts	Bachelor of Arts	10+2 from a recognized Board OR 10+2 with relevant vocational course from M.P. Board	Foundation course + a group of 3 optional subjects

Core Options at PG level

Faculty	Name of the Core Program	Eligibility	Subject Options
<i>E.g. Arts</i>	<i>Master of Arts</i>	<i>3 year Degree course in any faculty/ Honours degree course in same subject</i>	<i>No. of subjects</i>
<i>NIL</i>	<i>NIL</i>	<i>NIL</i>	<i>NIL</i>
<i>NIL</i>	<i>NIL</i>	<i>NIL</i>	<i>NIL</i>
<i>NIL</i>	<i>NIL</i>	<i>NIL</i>	<i>NIL</i>
<i>NIL</i>	<i>NIL</i>	<i>NIL</i>	<i>NIL</i>
<i>NIL</i>	<i>NIL</i>	<i>NIL</i>	<i>NIL</i>
<i>NIL</i>	<i>NIL</i>	<i>NIL</i>	<i>NIL</i>

M.Phil/ Ph.D. Programs

S.no.	Subject	Eligibility	No. of scholars registered
<i>NIL</i>	<i>NIL</i>	<i>NIL</i>	<i>NIL</i>
<i>NIL</i>	<i>NIL</i>	<i>NIL</i>	<i>NIL</i>
<i>NIL</i>	<i>NIL</i>	<i>NIL</i>	<i>NIL</i>
<i>NIL</i>	<i>NIL</i>	<i>NIL</i>	<i>NIL</i>
<i>NIL</i>	<i>NIL</i>	<i>NIL</i>	<i>NIL</i>
<i>NIL</i>	<i>NIL</i>	<i>NIL</i>	<i>NIL</i>

PG Diploma/ Diploma/ Certificate/ Self-financed/ Skill based Vocational/ Short term courses

Name of the Course	Department	Duration	Fees	Seats
<i>NIL</i>	<i>NIL</i>	<i>NIL</i>	<i>NIL</i>	<i>NIL</i>
<i>NIL</i>	<i>NIL</i>	<i>NIL</i>	<i>NIL</i>	<i>NIL</i>
<i>NIL</i>	<i>NIL</i>	<i>NIL</i>	<i>NIL</i>	<i>NIL</i>
<i>NIL</i>	<i>NIL</i>	<i>NIL</i>	<i>NIL</i>	<i>NIL</i>
<i>NIL</i>	<i>NIL</i>	<i>NIL</i>	<i>NIL</i>	<i>NIL</i>
<i>NIL</i>	<i>NIL</i>	<i>NIL</i>	<i>NIL</i>	<i>NIL</i>

Academic Work	First/ Third/ Fifth Semester	Second/ Fourth/ Sixth Semester
Orientation Classes/Zero Classes/SWOT analysis	01 july to 13 july 2016	02 jan 2017
Teaching and Continuous Comprehensive Evaluation	14 july to 07 nov 2016	03 jan to 25 april 2017
CCE Schedule	sep fourth week	march 2nd week
Preparation Leave	08 NOV TO 14 NOV 2016	26 APRIL TO 27 APRIL 2017
Practical Exams (Graduation/Post Graduation)	15 OCT TO 07 NOV 2016	25 MARCH TO 25 APRIL 2017
Semester and ATKT Exams	15 NOV TO 31 DEC 2016	28 APRIL TO 27 MAY
Declaration of Examination Results	31 DEC 2016	15 JUN 2017
Semester Break (for students)	22 DEC TO 31 DEC 2016	27 MAY TO 30 JUN 2017
Semester Break (for teachers)	22 DEC TO 31 DEC 2016	27 MAY TO 15 JUN 2017

7. The Student Experience (4 pages)

Briefly describes student life in the college:

- Infrastructural facilities available to students - Classrooms, Smart classrooms, laboratories and equipment, Common Research Lab, Hostel; Canteen; Garden; Students common room, Auditorium, Sports Complex & other facilities

nil

services (e & print), annual improvement initiatives

NIL

- Student support services:
 - ✓ IT enabled services

NIL

&

- 1- Gaon ki beti Scheme
- 2- Pratibha Kiran Scheme
- 3- Handicapt Scholarship Scheme
- 4- Minority beneficial Scheme
- 5- Student Health Insurance Scheme
- 6- CMMVV Scheme
- 7- Awagaman

- ✓ Personal enhancement & development schemes- NCC, NSS, Facilities for physically challenged & slow learners; Tutor-Guardian Scheme, Grievance Redressal Cell, Entrepreneurship Cell, Remedial classes, Career Guidance Cell.

NIL

- ✓ Major student welfare initiatives over the past year

NIL

- Extension Activities

NIL

8. Student Achievements (5 pages)

Highlights the most significant academic and non-academic achievements of students over the past year. This can include major academic awards and scholarships received student research, and sports and other extracurricular activities. Focusses, in particular, on profiling top achievers and describing how resources provided by the college helped these students succeed.

ACADEMIC

- Merit

S.no	Name of the award/ medal/ meritorious scholarship	Name of the recipient	Class	Area of achievement
1	meritorious award	1	BA-1	COLLEGE LEVEL

- Research scholarship/ award

S.no	Name of the scholarship award/	Name of the recipient	Class	Area of research
1	NIL	NIL	NIL	NIL
2	NIL	NIL	NIL	NIL
3	NIL	NIL	NIL	NIL
4	NIL	NIL	NIL	NIL
5	NIL	NIL	NIL	NIL

CULTURAL

- Participation

S.no	Name of the event	District Level	State Level	University	National Level
1	ANNUAL FUNCTION	COLLEGE LEVEL	-	-	-

- Awards and Achievements

Name of the student	Class	Event	Award/Achievement
NIL	NIL	NIL	NIL
NIL	NIL	NIL	NIL
NIL	NIL	NIL	NIL
NIL	NIL	NIL	NIL
NIL	NIL	NIL	NIL
NIL	NIL	NIL	NIL
NIL	NIL	NIL	NIL
NIL	NIL	NIL	NIL
NIL	NIL	NIL	NIL

SPORTS

- Participation

S.no	Name of the event	Division Level	State Level	University/ National Level	International Level
01	BOLLYBAL	YES	-	-	-

- Awards and Achievements

Name of the student	Class	Sport	Award/Achievement
<i>NIL</i>	<i>NIL</i>	<i>NIL</i>	<i>NIL</i>
<i>NIL</i>	<i>NIL</i>	<i>NIL</i>	<i>NIL</i>
<i>NIL</i>	<i>NIL</i>	<i>NIL</i>	<i>NIL</i>
<i>NIL</i>	<i>NIL</i>	<i>NIL</i>	<i>NIL</i>
<i>NIL</i>	<i>NIL</i>	<i>NIL</i>	<i>NIL</i>
<i>NIL</i>	<i>NIL</i>	<i>NIL</i>	<i>NIL</i>
<i>NIL</i>	<i>NIL</i>	<i>NIL</i>	<i>NIL</i>

9. Research Activities (4 pages)

Identifies major research themes, places these themes in their social and economic context, highlights major research achievements (publications, collaborations, intellectual property produced, external funding received etc.), and profiles top researchers. Lays out the research agenda and identifies themes for the coming year.

- Major research themes

S. No.	Department	Prioritized research area and expertise	Social/ economic context
<i>NIL</i>	<i>NIL</i>	<i>NIL</i>	<i>NIL</i>
<i>NIL</i>	<i>NIL</i>	<i>NIL</i>	<i>NIL</i>
<i>NIL</i>	<i>NIL</i>	<i>NIL</i>	<i>NIL</i>
<i>NIL</i>	<i>NIL</i>	<i>NIL</i>	<i>NIL</i>

- Major/Minor research projects

S. No	Name of the Faculty	Year	Title of the project	Name of funding Agency/ Industry	Total grant received
<i>NIL</i>	<i>NIL</i>	<i>NIL</i>	<i>NIL</i>	<i>NIL</i>	<i>NIL</i>

- Papers presented in regional, national and international seminars/ conferences

S. No.	Name of the faculty	Regional/ State	National	International
<i>NIL</i>	<i>NIL</i>	<i>NIL</i>	<i>NIL</i>	<i>NIL</i>
<i>NIL</i>	<i>NIL</i>	<i>NIL</i>	<i>NIL</i>	<i>NIL</i>
<i>NIL</i>	<i>NIL</i>	<i>NIL</i>	<i>NIL</i>	<i>NIL</i>
<i>NIL</i>	<i>NIL</i>	<i>NIL</i>	<i>NIL</i>	<i>NIL</i>

S. No.	Name of the faculty	Regional/ State	National	International
<i>NIL</i>	<i>NIL</i>	<i>NIL</i>	<i>NIL</i>	<i>NIL</i>
<i>NIL</i>	<i>NIL</i>	<i>NIL</i>	<i>NIL</i>	<i>NIL</i>
<i>NIL</i>	<i>NIL</i>	<i>NIL</i>	<i>NIL</i>	<i>NIL</i>

- Publications in national/ international journals

S.No.	Name of the faculty	Name of the journal	Title of the paper	ISSN/ ISBN number /Impact factor
<i>NIL</i>	<i>NIL</i>	<i>NIL</i>	<i>NIL</i>	<i>NIL</i>
<i>NIL</i>	<i>NIL</i>	<i>NIL</i>	<i>NIL</i>	<i>NIL</i>
<i>NIL</i>	<i>NIL</i>	<i>NIL</i>	<i>NIL</i>	<i>NIL</i>
<i>NIL</i>	<i>NIL</i>	<i>NIL</i>	<i>NIL</i>	<i>NIL</i>
<i>NIL</i>	<i>NIL</i>	<i>NIL</i>	<i>NIL</i>	<i>NIL</i>
<i>NIL</i>	<i>NIL</i>	<i>NIL</i>	<i>NIL</i>	<i>NIL</i>

- List of linkages/ Collaborations/ MOUs

NIL

- College Publications: Research Journal, Magazine, Newsletter

NIL

- Faculty and Administrative appointments: Teaching and Non-teaching

Positions	Teaching Faculty				Non Teaching Faculty	Technical Staff
	Prof	Promoted Prof	Assistant Prof	Guest Faculty		
Sanctioned by UGC/ University/ State Govt						-
<i>Filled</i>	-	-	04	10	06	-
Sanctioned by Management/	-	-	-	01	01	-

Janbhagidari Samiti/ Other authority						
<i>Filled</i>			04	11	07	

2. Guest Faculty: subject-wise appointments

S.no.	Name of the Guest Faculty	Qualification	Subject
1	DR RAJESH ARYA	PHD	BOTANY
2	DR SAROJA JAWALKAR	PHD	SOCIOLOGY
3	RAJESH BHATIYA	PG LEVEL	COMMERCE
4	SUDARSHNA RAJ	PG LEVEL	COMMERCE
5	RAMESH PAHADE	PG LEVEL	CHEMISTRY
6	SANDHYA UPADHYAY	PG LEVEL	ENGLISH
7	SAILENDRA VASNIK	PG LEVEL	POLITICAL SCIENCE
8	MOTIRAM LIKHITKAR	PG LEVEL	MATHS
9	RADHA ASHISH PANDE	PG LEVEL	SPPORTS OFFICER
10	DEEPSHIKHA KEDARE	PG LEVEL	PHYSICS

3. Annual improvement in academic, research & administrative Initiatives

NIL

Describes major events including seminars, conferences, competitions, student study trips etc. Focuses on what was achieved and learned, and how the college will follow up.

Describes significant academic, administrative, student support, fundraising, and other initiatives over the past year. The description of each initiative will be structured around the need for the initiative, how it was designed, what resources were used, what results were achieved, and which features of the initiative drove success.

NIL

12. Institutional Development plan (4 pages)

Describes the college's activities over the past year under different schemes, discusses performance against strategic/institutional development plans and commitments over the previous year.

Indicator*	Baseline Value	Target for [current year]	Value as on 30 th September [current year]
NIL	NIL	NIL	NIL

Role of Internal Quality Assurance Cell (IQAC) in academic audit and initiating quality assurance strategies and processes

NIL

13. Placement Report (3 pages)

Describes the college's placement cell activities, placement rate and salary statistics, and lists major employers and sectors of employment (disaggregated by gender and course studied). Profiles successful alumni and identifies emerging placement trends.

Activities of Placement Cell

S.no.	Name of the activity	Name of the Resource Person/ agency	Date & Duration
1	NIL	NIL	NIL

Placement Details

S.no.	No. of Students Selected	List of employers/companies	Salary Package
	NIL	NIL	NIL

Alumni Profile

S.no.	Name of Alumni	Employment status	Name of the organisation
1	NIL	NIL	NIL

14. Innovations and Best Practices

NIL
NIL

16. Looking Ahead (3 pages) Future Plans

Lays out the college's priorities and goals over the coming year. Describes key initiatives planned, what each initiative is expected to achieve, and how it will contribute to the college's long term development

Key Initiatives Planned/ implemented

S. No	Head (administrative/ academic, etc)	Nature of proposal	Expected Outcome
NIL	NIL	NIL	NIL

17. Appendix: Institutional Performance Data and Financial Reports

Provides key data on the institution and its performance, including achievement against strategic plan targets and financial reports. This section is mandatory. All data fields must be completed, in the format and as per the instructions attached.

Part II

Appendix: Institutional Performance Data and Financial Reports (all part II data kindly fill in attached excel sheet)

1. Sanctioned seats and enrolment

(a) Sanctioned Seats					
	SC	ST	Other Reserved Categories	General	Total
Undergraduate	77	253	137	13	480
Postgraduate	NIL	NIL	NIL	NIL	NIL
PhD	NIL	NIL	NIL	NIL	NIL

Data Source: AISH

(b) Enrolment							
		Undergraduate			Postgraduate		PhD
		Year 1	Year 2	Year 3	Year 1	Year 2	
SC	Male	09	10	12	NIL	NIL	NIL
	Female	24	11	13	NIL	NIL	NIL
ST	Male	75	61	27	NIL	NIL	NIL
	Female	63	32	19	NIL	NIL	NIL
Other Reserved Categories	Male	39	15	11	NIL	NIL	NIL
	Female	40	13	16	NIL	NIL	NIL
General	Male	02	03	01	NIL	NIL	NIL
	Female	03	02	01	NIL	NIL	NIL
Total	Male	125	89	51	NIL	NIL	NIL
	Female	130	58	39	NIL	NIL	NIL

Data Source: AISHE

Number of sanctioned seats by discipline group and enrolment in the 1st year as on September 30th [current year]				
Discipline Group	Undergraduate		Postgraduate	
	Sanctioned Seats	Enrolment	Sanctioned Seats	Enrolment
Arts	215	215	NIL	NIL
Commerce	69	69	NIL	NIL
Criminology and Forensic Science	NIL	NIL	NIL	NIL
Cultural Studies	NIL	NIL	NIL	NIL
Defence Studies	NIL	NIL	NIL	NIL
Design	NIL	NIL	NIL	NIL
Disability Studies	NIL	NIL	NIL	NIL
Education	NIL	NIL	NIL	NIL
Fashion Technology	NIL	NIL	NIL	NIL
Fine Arts	NIL	NIL	NIL	NIL
Fisheries Science	NIL	NIL	NIL	NIL
Foreign Languages	NIL	NIL	NIL	NIL
Gandhian Studies	NIL	NIL	NIL	NIL
Home Science	NIL	NIL	NIL	NIL
Indian Languages	NIL	NIL	NIL	NIL
IT & Computer	NIL	NIL	NIL	NIL

Journalism and Mass Communication	NIL	NIL	NIL	NIL
Law	NIL	NIL	NIL	NIL
Library and Information Science	NIL	NIL	NIL	NIL
Linguistics	NIL	NIL	NIL	NIL
Management	NIL	NIL	NIL	NIL
Marine Science and Oceanography	NIL	NIL	NIL	NIL
Oriental Learning	NIL	NIL	NIL	NIL
Physical Education	NIL	NIL	NIL	NIL
Religious Studies	NIL	NIL	NIL	NIL
Science	166	166	NIL	NIL
Social Science	NIL	NIL	NIL	NIL
Social Work	NIL	NIL	NIL	NIL
Women Studies	NIL	NIL	NIL	NIL

Data Source: AISHE

2. Transition and on-time graduation

(a) Transition from the 1st year to the 2nd year (Undergraduate)				
		Number of students admitted to the 1 st year in [the previous academic year] (*)	Of (*), the number of students currently enrolled in the 2 nd year who:	
			Passed all subjects in the 1 st year	Were Allowed to Keep Terms
SC	Male	31	31	-
	Female	46	46	-
ST	Male	139	139	-
	Female	114	114	-
Other Reserved Categories	Male	71	71	-
	Female	66	66	-
General	Male	07	07	-
	Female	06	06	-
Total	Male	248	248	-
	Female	232	232	-

Data Source: AISHE, examination results declared by [affiliating university/autonomous college]

(a) Transition from the 1st year to the 2nd year (Postgraduate)				
		Number of students admitted to the 1 st year in [the previous academic year] (*)	Of (*), the number of students currently enrolled in the 2 nd year who:	
			Passed all subjects in the 1 st year	Were Allowed to Keep Terms
SC	Male	NIL	NIL	NIL
	Female	NIL	NIL	NIL

ST	Male	NIL	NIL	NIL
	Female	NIL	NIL	NIL
Other Reserved Categories	Male	NIL	NIL	NIL
	Female	NIL	NIL	NIL
General	Male	NIL	NIL	NIL
	Female	NIL	NIL	NIL
Total	Male	NIL	NIL	NIL
	Female	NIL	NIL	NIL

Data Source: AISHE, examination results declared by [affiliating university/autonomous college]

(b) On-time graduation (Undergraduate)			
		Number of students admitted to the 1 st year in [year t-3] (*)	Of (*), the number of students who passed all final year examinations for the previous academic year
SC	Male	31	
	Female	46	
ST	Male	139	
	Female	114	
Other Reserved Categories	Male	71	
	Female	66	
General	Male	07	
	Female	06	
Total	Male	248	
	Female	232	

Data Source: AISHE, examination results declared by [affiliating university/autonomous college]

(b) On-time graduation (Postgraduate)			
		Number of students admitted to the 1 st year in [year t-2] (*)	Of (*), the number of students who passed all final year examinations in the current year
SC	Male	NIL	NIL
	Female	NIL	NIL
ST	Male	NIL	NIL
	Female	NIL	NIL
Other Reserved Categories	Male	NIL	NIL
	Female	NIL	NIL
General	Male	NIL	NIL

	Female	NIL	NIL
Total	Male	NIL	NIL
	Female	NIL	NIL

Data Source: AISHE, examination results declared by [affiliating university/autonomous college]

3. Faculty and administrative staff in position and training

(a) Faculty and administrative staff in position as on 30 th September, [current year]							
		Reserved					Unreserved
		SC	ST	MP Residents	Females	Others	
Assistant Professor	Sanctioned	02	-	YES	01	02	02
	Filled (Regular)	-	0	0	0	0	0
	Filled (Contract)	0	0	0	0	0	0
	Guest Lecturers	07	0	yes	04	01	02
Associate Professor	Sanctioned	0	0	0	01	01	0
	Filled (Regular)	0	0	0	0	0	0
	Filled (Contract)	0	0	0	0	0	0
	Guest Lecturers	0	0	0	0	0	0
Professor	Sanctioned	0	0	0	0	0	0
	Filled (Regular)	0	0	0	0	0	0
	Filled (Contract)	0	0	0	0	0	0
	Guest Lecturers	0	0	0	0	0	0
Admin. Staff (all)	Sanctioned	0	0	0	0	08	01
	Filled (Regular)	01	01	yes	01	0	1
	Filled (Contract)	0	0	0	0	0	0
Accountant	Sanctioned	0	0	0	0	0	1
	Filled (Regular)	0	0	0	0	0	-
	Filled (Contract)	0	0	0	0	0	-

Data Source: AISHE

(b) Training of faculty and administrative staff between October 1 st [previous year] to September 30 th [current year]				
		Leadership and management training	Training in the area of academic specialisation	Other training
Assistant Professor	Number trained	NIL	NIL	NIL
	Avg. number of days	NIL	NIL	NIL
Associate Professor	Number trained	NIL	NIL	NIL
	Avg. number of days	NIL	NIL	NIL
Professor	Number trained	NIL	NIL	NIL

	Avg. number of days	NIL	NIL	NIL
Administrative Staff (all)	Number trained	NIL	N/A	NIL
	Avg. number of days	NIL	N/A	NIL
Accountant	Number trained	NIL	N/A	NIL
	Avg. number of days	NIL	N/A	NIL

Data Source: Compiled from training certificates submitted by faculty/administrative sta

(c) Faculty qualifications as on 30 th September, [Current Year]					
		PhD	Postgraduate	Undergraduate	Others
Assistant Professor	Regular	04	NIL	NIL	NIL
	Contract	NIL	NIL	NIL	NIL
	Guest Lecturers	02	06		01 M FILL
Associate Professor	Regular	NIL	NIL	NIL	NIL
	Contract	NIL	NIL	NIL	NIL
	Guest Lecturers	NIL	NIL	NIL	NIL
Professor	Regular	NIL	NIL	NIL	NIL
	Contract	NIL	NIL	NIL	NIL
	Guest Lecturers	NIL	NIL	NIL	NIL

Data Source: AISHE

4. Student support services

(a) Financial support received (from all sources) by students in the college between October 1 st [previous year] to September 30 th [current year]							
		Undergraduate		Postgraduate		PhD	
		Number	Average Value (Rs.)	Number	Average Value (Rs.)	Number	Average Value (Rs.)
SC	Male	31	62000	NIL	NIL	NIL	NIL
	Female	46	92000	NIL	NIL	NIL	NIL
ST	Male	139	278000	NIL	NIL	NIL	NIL
	Female	114	228000	NIL	NIL	NIL	NIL
General	Male	0	0	NIL	NIL	NIL	NIL
	Female	0	0	NIL	NIL	NIL	NIL

Total	Male	0	0	<i>NIL</i>	<i>NIL</i>	<i>NIL</i>	<i>NIL</i>
	Female	0	0	<i>NIL</i>	<i>NIL</i>	<i>NIL</i>	<i>NIL</i>

Data Source: AISH

(a) Financial support received, from the DHE, by students in the college between October 1st [previous year] to September 30th [current year]							
		Undergraduate		Postgraduate		PhD	
		Number	Average Value (Rs.)	Number	Average Value (Rs.)	Number	Average Value (Rs.)
SC	Male	0	0	<i>NIL</i>	<i>NIL</i>	<i>NIL</i>	<i>NIL</i>
	Female	0	0	<i>NIL</i>	<i>NIL</i>	<i>NIL</i>	<i>NIL</i>
ST	Male	0	0	<i>NIL</i>	<i>NIL</i>	<i>NIL</i>	<i>NIL</i>
	Female	0	0	<i>NIL</i>	<i>NIL</i>	<i>NIL</i>	<i>NIL</i>
General	Male	0	0	<i>NIL</i>	<i>NIL</i>	<i>NIL</i>	<i>NIL</i>
	Female	0	0	<i>NIL</i>	<i>NIL</i>	<i>NIL</i>	<i>NIL</i>
Total	Male	0	0	<i>NIL</i>	<i>NIL</i>	<i>NIL</i>	<i>NIL</i>
	Female	0	0	<i>NIL</i>	<i>NIL</i>	<i>NIL</i>	<i>NIL</i>

Data Source: College records, DHE

(b) Hostel occupancy as on 30th September, [Current Year] (all hostels)		
<u>Capacity</u>	Number of residents	
Males:		
Females:		
SC	Male	<i>NIL</i>
	Female	<i>NIL</i>
ST	Male	<i>NIL</i>
	Female	<i>NIL</i>
General	Male	<i>NIL</i>
	Female	<i>NIL</i>
Total	Male	<i>NIL</i>
	Female	<i>NIL</i>

Data Source: Hostel register verified against fee receipts on record

(c) Hostel occupancy as on 30th September, [Current Year] (girls only hostels opened after _____)	
<u>Capacity</u>	Number of residents
SC	<i>NIL</i>
ST	<i>NIL</i>
General	<i>NIL</i>
Total	<i>NIL</i>

Data Source: Hostel register verified against fee receipts on reco

	Division										
	3 rd Division	NIL	NIL	NIL	NIL	NIL	NIL	NIL	NIL	NIL	NIL

Data Source: AISHE, Examination results declared by [affiliating university/autonomous college]

6. Placement and student tracking

(a) Placement and Tracking of Students who graduated in [previous academic year] (Undergraduate)						
		Number of students who graduated in [the previous academic year] (*)	+Of (*), the number of students who were successfully tracked and are:			
			Employed/ Self-employed	In education/ training	Unemployed	Not in the labour force
SC	Male					
	Female					
ST	Male					
	Female					
General	Male					
	Female					
Total	Male					
	Female					

Data Source: Records of the college placement cell

(b) Placement and Tracking of Students who graduated in [previous academic year] (Postgraduate)						
		Number of students who graduated in [the previous academic year] (*)	Of (*), the number of students who were successfully tracked and are:			
			Employed/ Self-employed	In education/ training	Unemployed	Not in the labour force
SC	Male	NIL	NIL	NIL	NIL	NIL
	Female	NIL	NIL	NIL	NIL	NIL
ST	Male	NIL	NIL	NIL	NIL	NIL
	Female	NIL	NIL	NIL	NIL	NIL
General	Male	NIL	NIL	NIL	NIL	NIL

	Female	<i>NIL</i>	<i>NIL</i>	<i>NIL</i>	<i>NIL</i>	<i>NIL</i>
Total	Male	<i>NIL</i>	<i>NIL</i>	<i>NIL</i>	<i>NIL</i>	<i>NIL</i>
	Female	<i>NIL</i>	<i>NIL</i>	<i>NIL</i>	<i>NIL</i>	<i>NIL</i>

Data Source: Records of the college placement cell

7. PhDs Awarded

Number of PhDs awarded between October 1 st [previous year] to September 30 th [current year]	
Discipline Group	Number
Arts	<i>NIL</i>
Commerce	<i>NIL</i>
Criminology and Forensic Science	<i>NIL</i>
Cultural Studies	<i>NIL</i>
Defence Studies	<i>NIL</i>
Design	<i>NIL</i>
Disability Studies	<i>NIL</i>
Education	<i>NIL</i>
Fashion Technology	<i>NIL</i>
Fine Arts	<i>NIL</i>
Fisheries Science	<i>NIL</i>
Foreign Languages	<i>NIL</i>
Gandhian Studies	<i>NIL</i>
Home Science	<i>NIL</i>
Indian Languages	<i>NIL</i>
IT & Computer	<i>NIL</i>
Journalism and Mass Communication	<i>NIL</i>
Law	<i>NIL</i>
Library and Information Science	<i>NIL</i>
Linguistics	<i>NIL</i>
Management	<i>NIL</i>
Marine Science and Oceanography	<i>NIL</i>
Oriental Learning	<i>NIL</i>
Physical Education	<i>NIL</i>
Religious Studies	<i>NIL</i>
Science	<i>NIL</i>
Social Science	<i>NIL</i>
Social Work	<i>NIL</i>
Women Studies	<i>NIL</i>
Literature	<i>NIL</i>
Other	<i>NIL</i>
All disciplines	<i>NIL</i>

Data Source: AISHE

8. Research and consultancy

Revenue generated through externally funded research and consultancies over [previous financial year]		
Discipline Group	Number of active projects	Total Revenue Generated (Rs. lakhs)
Arts	NIL	NIL
Commerce	NIL	NIL
Criminology and Forensic Science	NIL	NIL
Cultural Studies	NIL	NIL
Defence Studies	NIL	NIL
Design	NIL	NIL
Disability Studies	NIL	NIL
Education	NIL	NIL
Fashion Technology	NIL	NIL
Fine Arts	NIL	NIL
Fisheries Science	NIL	NIL
Foreign Languages	NIL	NIL
Gandhian Studies	NIL	NIL
Home Science	NIL	NIL
Indian Languages	NIL	NIL
IT & Computer	NIL	NIL
Journalism and Mass Communication	NIL	NIL
Law	NIL	NIL
Library and Information Science	NIL	NIL
Linguistics	NIL	NIL
Management	NIL	NIL
Marine Science and Oceanography	NIL	NIL
Oriental Learning	NIL	NIL
Others / Inter-disciplinary	NIL	NIL
Physical Education	NIL	NIL
Religious Studies	NIL	NIL
Science	NIL	NIL
Social Science	NIL	NIL
Social Work	NIL	NIL
Veterinary and Animal Sciences	NIL	NIL
Women Studies	NIL	NIL
All disciplines	NIL	NIL

Dat

Number of papers published in peer-reviewed journals between October 1 st [previous year] to September 30 th [current year]			
Discipline Group	Number of papers published		Number of published papers through cross-institute research collaboration
	International Journals	National Journals	
Arts	NIL	02	NIL

Commerce	NIL	NIL	NIL
Criminology and Forensic Science	NIL	NIL	NIL
Cultural Studies	NIL	NIL	NIL
Defence Studies	NIL	NIL	NIL
Design	NIL	NIL	NIL
Disability Studies	NIL	NIL	NIL
Education	NIL	NIL	NIL
Fashion Technology	NIL	NIL	NIL
Fine Arts	NIL	NIL	NIL
Fisheries Science	NIL	NIL	NIL
Foreign Languages	NIL	NIL	NIL
Gandhian Studies	NIL	NIL	NIL
Home Science	NIL	NIL	NIL
Indian Languages	NIL	NIL	NIL
IT & Computer	NIL	NIL	NIL
Journalism and Mass Communication	NIL	NIL	NIL
Law	NIL	NIL	NIL
Library and Information Science	NIL	NIL	NIL
Linguistics	NIL	NIL	NIL
Management	NIL	NIL	NIL
Marine Science and Oceanography	NIL	NIL	NIL
Oriental Learning	NIL	NIL	NIL
Others / Inter-disciplinary	NIL	NIL	NIL
Physical Education	NIL	NIL	NIL
Religious Studies	NIL	NIL	NIL
Science	NIL	NIL	NIL
Social Science	NIL	NIL	NIL
Social Work	NIL	NIL	NIL
Women Studies	NIL	NIL	NIL
All disciplines	NIL	NIL	NIL

Date Source: College records based on published papers submitted by faculty

9. NAAC accreditation and UGC autonomy

	Date of Application (LOI & SSR submitted)	Date on which accreditation was received	Grade	Valid till
1 st Cycle	NIL	NIL	NIL	NIL
2 nd Cycle	NIL	NIL	NIL	NIL
3 rd Cycle	NIL	NIL	NIL	NIL

Date of submission of the Annual Quality Assurance Report for the current year: _____.

Does the college have currently valid UGC autonomy? _____ . If yes, by order number _____, dated _____.

10. Institutional Trends

Variable	Baseline Value	[Year 1]	[Year 2]	[Year 3]	[Year 4]	Current Year
Percentage of sanctioned seats in the 1 st year filled (undergraduate, all categories)		255	123	100	-	584
Percentage of sanctioned seats in the 1 st year filled (postgraduate, all categories)	NIL	NIL	NIL	NIL	NIL	NIL
Transition rate from the 1 st year to the 2 nd year (undergraduate, all categories)	NIL	NIL	NIL	NIL	NIL	NIL
On-time graduation rate (undergraduate, all categories)	NIL	NIL	NIL	NIL	NIL	NIL
Transition rate from the 1 st year to the 2 nd year (post graduate, all categories)	NIL	NIL	NIL	NIL	NIL	NIL
On-time graduation rate (postgraduate, all categories)	NIL	NIL	NIL	NIL	NIL	NIL
Regular faculty in position rate (all levels, reserved categories)	NIL	NIL	NIL	NIL	NIL	NIL
Regular faculty in position rate (all levels, unreserved categories)	NIL	NIL	NIL	NIL	NIL	NIL
Percentage of regular faculty with PhDs (all levels)	NIL	NIL	NIL	NIL	NIL	NIL
Employment rate of graduates from the previous academic year (undergraduate, all categories)	NIL	NIL	NIL	NIL	NIL	NIL
Employment rate of graduates from the previous academic year (postgraduate, all categories)	NIL	NIL	NIL	NIL	NIL	NIL
Percentage of total revenue generated through externally funded research	NIL	NIL	NIL	NIL	NIL	NIL
Number of papers published in peer-reviewed, international journals	NIL	NIL	NIL	NIL	NIL	NIL

Source: Tables under section 1-8.

11. Financial Reports

Name and registration number of the auditor _____.

Number of audit observations recorded by the auditor_____.

Number of audit responses found satisfactory, as certified by the project directorate_____

Certified audit reports as per the standard Chart of Accounts to be attached.

12. All India Survey of Higher Education

Date on which all applicable fields of the Data Collection Format for the All India Survey of Higher Education were completed and submitted _____

Instructions

- All data is to be reported as on 30th September of the current year.
- Postgraduate courses refer to courses at the Masters and MPhil level.
- The number of sanctioned seats is the number of students the college is authorized, by the UGC/DHE/affiliating University, to admit in the first year of its degree programs.
- The number of sanctioned faculty posts is the number of faculty the college is authorized, by the UGC/DHE/affiliating University, to recruit on a full-time basis.
- Enrolment is defined as the number of students who have paid their admission fees for joining a degree program by September 30 of the respective academic year.
- Admission is defined as the number of students who have paid their admission fees for joining a degree program, in the first year, by September 30 of the respective academic year and who have never been enrolled in that degree program previously.
- Other Reserved Categories include all categories of students (for e.g. sports quota, extracurricular quota, residents of Jammu and Kashmir etc.) for whom a fixed percentage of sanctioned seats are reserved.
- Examination results are to be reported for examinations held in the previous academic year, and the results for which were declared by 30th September of the current year.
- Allowed to keep terms refers to students who did not pass all subjects in the previous year but were allowed to transition to the next year of their respective degree programs.
- Regular faculty refers to faculty employed on open-ended, full-time contracts as per UGC norms.
- Contract faculty refers to faculty employed on fixed term, full-time contracts as per UGC norms.
- Guest Lecturers refers to faculty employed on a per lecture or per day basis as per UGC norms.
- Data on scholarships is to be reported on all scholarships awarded between 1st October of the previous year and 30th September of the current year.
- A hostel seat is considered occupied if a student has been allotted a seat in the hostel and the student, to whom the seat was allotted, has paid the hostel fee for the current academic year.

- Examination results refers to the average score obtained by a student, in the respective academic year, across all exams that are used to assess whether the student has met the requirement of the degree program in which he/she is enrolled.
- Student tracking refers to having up to date contact information (mobile phone and/or email address) and status (employment, unemployed, in formal education or training, not in the labour market/other) for each student for up to six from the end of the academic year when the student passed out (graduated).
- Externally funded research and consultancies refer to research and/or development funded through consultancy contracts or partnerships with a sponsor or purchaser who is external to the institution.
- A peer-reviewed journal is one that subjects an author's research to review and evaluation by others who are experts in the same field, before the research is published.
- An international journal is one that has an International Standard Serial Number (ISSN) issued by the ISSN International Centre.
- A paper is said to be published through cross-institute research collaboration if the primary affiliation of at least two authors is to different colleges/institutions.
- The institutional performance indicators common across all institutions can be found in the PIP. Institution-specific performance indicators can be found in the MOU signed between the Institution and the Department of Higher Education.
- The standard Chart of Accounts refers to the standard format for audit reports as notified by the Department of Higher Education through its orders.