

'kkldh; fof/k egkfo|ky;] jhok ¼e-iz-½

Øekad 728 @fof/k@2017

jhok fnukad 02-1-2018

izfr]

vk;qDr@ifj;kstuk lapkyd]
e-iz-LVsV izktsDV
Mk;jsDVjsV]
¼:lk½ jk"V^ah; mPprj f'k{kk
vfHk;ku]
mPp f'k{kk foHkkx] ,-ch-,e-Vkoj ,e-ih- uxj
tksu 01]
HkksikyA

fo"k;%&

vafre cSp dk izf'k{k.k % fo'o cSad ifj;kstuk ¼MPHEQIP½ ds rgr laLFkkxr fodkl ;kstuk
cukus gsrq IIM bUnkSj
esa cSp&18 ¼4 tuojuh ls 6 tuojuh 2018½ 03 fnolh; vkoklh;
izf'k{k.k ckor~A
vkidk i= Øekad 1020@:lk 2018 fnukad 21-12-

lanHkZ&

2017

lanfHkZr fo"k; dh tkudkjh fu/kkZfjr izi= esa layXu dj vkidh
vksj izsf'kr gSA

layXu

%&

mijksDrkuqlkj

¼MkW0 lqjsUnz izikr flag½

izkpk;Z

'kkldh; fof/k egkfo|ky;]
jhok ¼e-
iz-½

“kkldh; fof/k egkfo|ky;]jhok ¼e0iz0½

egkfo|ky; dk uke% “kkldh; fof/k egkfo|ky;]jhok ¼e-iz-½

egkfo ky; esa orZeku esa Nk=kokl dh miyC/krk ¼gkW@u gh½	Nk=kok l dh {kerk	iq:’k@efgyk	Nk=kokl esa izos”k gsrq izfr o’kZ izklr gksus okys vkosnuksa dh la[;k					izfr o’kZ Nk=kokl esa vkSlr izosf”kr fo kfFkZ;ksa dh la[;k					Nk=kokl esa izos”k ls oafpr vkosndks dh oxZokj la[;k				
			,l-lh	,l- Vh	dU;k	fnO;k ax	dq y	,llh	,l-Vh	dU; k	fnO;k ax	dq y	,llh	,lVh	dU; k	fnO;k ax	dq y
ugh	&	&	&	&	&	&	&	&	&	&	&	&	&	&	&	&	&

egkfo|ky; dk uke% “kkldh; fof/k egkfo|ky;]jhok ¼e-iz-½

egkfo ky; esa dkSu lk Nk=kokl pkgrs gSA	iq:’k@efgyk Nk=kokl	laHkkfor izos”k {kerk
ckyd Nk=kokl	lkq:’k	100

izkpk;Z
“kkldh; fof/k egkfo|ky;]
jhok ¼e0iz0½

GOVT.LAW COLLEGE REWA (M.P.)

Annual Report 20__

This format outlines the annual reports to be published by all colleges in the Madhya Pradesh on their websites, by October 31st of each year. Part I is intended as a guide and colleges are free to alter the contents and format as they see fit. Part II, the Appendix (Institutional Performance Data and Financial Reports), is mandatory and colleges are required to report all data as per the attached format and instructions.

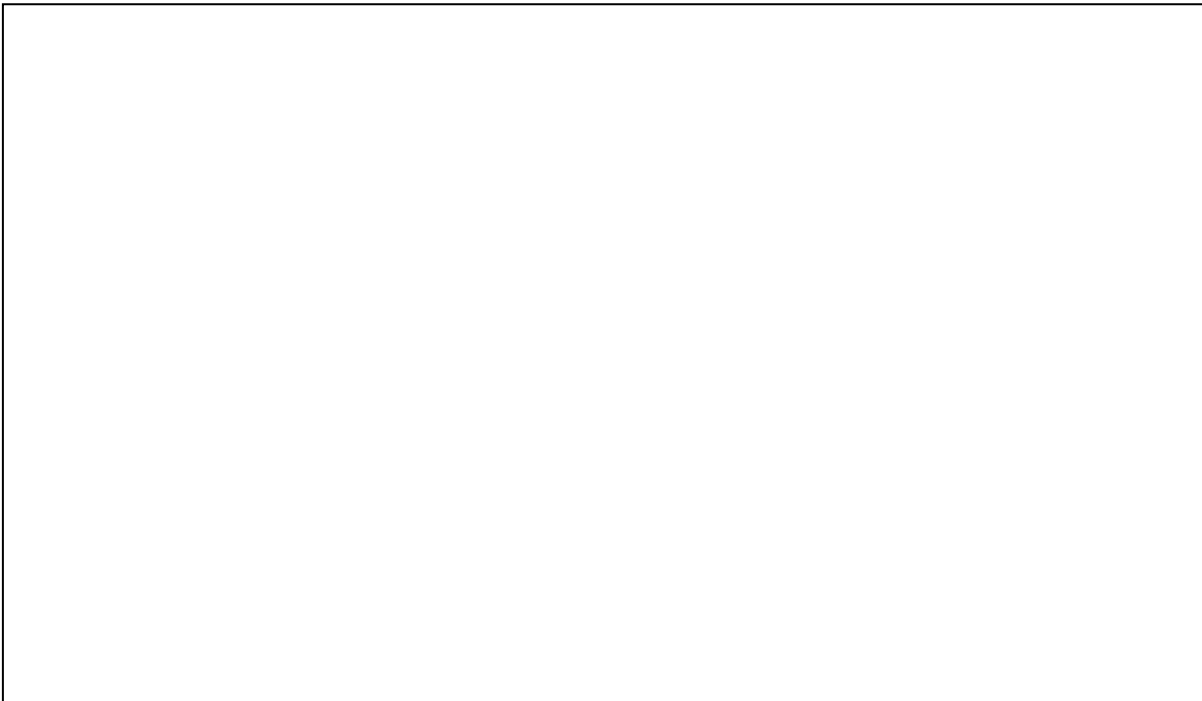
Important Information –

- Name of the college – GOVT.LAW COLLEGE REWA (M.P.)
- Place of the college - REWA
- District - REWA
- Division - REWA
- Year of establishment of college – JULY 2003
- Name and Contact details(Mail id , Phone) of Principal – Dr.S.P.SINGH Ph.07662-422289, Mobile No.7697086766 E-mail. drsp Singhmauganj@gmail.com
-
- Name , Post and Contact details of (mail id, Phone no.) of Reporting In charge - Dr.S.P.SINGH, Professor Law & In charged Principal Mob.9424668455
- Date of report submission -

Part I

- 1. The Principal's Report (2 pages)-** Highlights the key activities, events, and successes of the past year and briefly describes major new initiatives to be undertaken over the next year.

Guest faculty Prof.Ravendra Soni selection to Civil Judge in 2016
Bar Council Of India select to Test passed 25 Students Advocate



2. Overview (1 page)

- (i) Vision, Mission and Objectives of the college

BA.LL.B. /Ph.D.Centre

(ii) Brief introduction of the college (including the status (Govt. / Lead/ Constituent/ Affiliated/ Private), Parent University, UGC recognition, CPE status, etc), location & campus area

State Govt. & Affiliation of University A.P.SU.REWA (M.P)
U.G.C.12 B
LL.B. SEATS 320
LL.M. SEATS 44
NH.7- NEAR GUPTA PETROL PUMO JHIRIYA REWA (M.P.)
E.MAIL- heglcrew@mp.gov.in
Ph-07662-422289

(iii) History of the college with significant milestones

Govt. Law College, Rewa is situated in Madhya Pradesh State. The Govt. Law College, Rewa was started and now in a good condition also. The College of Law have the hostel facilities SC/ST and all other infrastructures. Govt. Law College, Rewa in paternal college Govt TRS college Rewa in July 2003 Govt. Law College, Rewa provide Bachelor degree courses and in Law. PG.Govt. Law College, Rewa is pioneer one. Govt. Law College, Rewa provides good faculties and the Govt. Law College, Rewa also provides good infrastructural facilities also.

(iv) Faculties and major disciplines

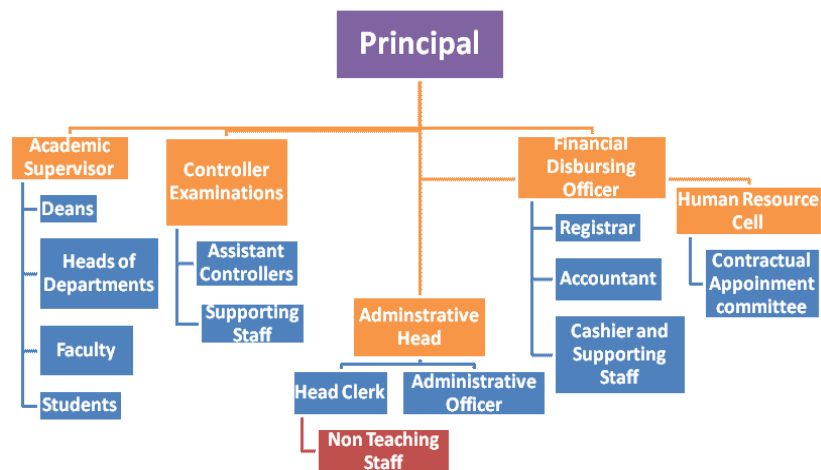
LAW Faculties

3. Senior Management Team and Board of Governors (1 page)

Lists the members of the senior management team (Principal, Registrar, Deans etc.) and members of the Board of Governors including their designations and professional backgrounds.

Administrative Hierarchy

For example -:



List of Chairperson/members of Statutory Bodies like Board of Governors/ Executive Committee/ Academic Council/ Janbhagidari Samiti, etc

4. Admission Statistics (1 page)

- The number of applicants at the UG and PG level who ranked the college as their 1st, 2nd and 3rd preference, the number of applications received for PhD courses, and the number of students admitted at each level as per the following format.

Applications	UG	PG	PhD
Applications that ranked the college as the 1 st preference	1863	876	NA
Applications that ranked the college as the 2 nd preference	1862	862	
Applications that ranked the college as the 3 rd preference	1853	838	

Total number of applications received			
Number of students admitted	392	67	

Data Source: E-pravesh portal, records of the affiliating university

- A brief demographic profile of students admitted (in terms of gender, caste, whether from MP etc.)

Name of the Course	Gender	Category	% of students from the State	% of students from other states
LL.B/ LL.M	M/F	Boys-356 Girls-103	80%	20%

5. Academic Programs: Core Programs - UG & PG

Core programs at UG level

Stream	Name of the Core Program	Eligibility	Optional subjects
Arts	Bachelor of Arts	10+2 from a recognized Board OR 10+2 with relevant vocational course from M.P.	Foundation course + a group of 3 optional subjects

		Board	
Nil	Nil	Nil	Nil

Core Options at PG level

Faculty	Name of the Core Program	Eligibility	Subject Options
<i>E.g. Arts</i>	<i>Master of Arts</i>	<i>3 year Degree course in any faculty/ Honours degree course in same subject</i>	<i>No. of subjects</i>
<i>Nil</i>	Nil	Nil	Nil

M.Phil/ Ph.D. Programs

S.no.	Subject	Eligibility	No. of scholars registered
Nil	Nil	Nil	Nil

PG Diploma/ Diploma/ Certificate/ Self-financed/ Skill based Vocational/
Short term courses

Name of the Course	Department	Duration	Fees	Seats
Nil	Nil	Nil	Nil	Nil

6. Academic Calendar 20 -

Academic Work	First/ Semester	Third/ Fifth	Second/ Fourth/ Sixth Semester
Orientation Classes/Zero Classes/SWOT analysis	Nil		Nil
Teaching and Continuous Comprehensive Evaluation	Nil		Nil
CCE Schedule	Nil		Nil
Preparation Leave	Nil		Nil
Practical Exams (Graduation/Post Graduation)	Nil		Nil
Semester and ATKT Exams	Nil		Nil
Declaration of Examination Results	Nil		Nil
Semester Break (for students)	Nil		Nil
Semester Break (for teachers)	Nil		Nil

7. The Student Experience (4 pages)

Briefly describes student life in the college:

- Infrastructural facilities available to students - Classrooms, Smart classrooms, laboratories and equipment, Common Research Lab, Hostel; Canteen; Garden; Students common room, Auditorium, Sports Complex & other facilities

- Infrastructural facilities available to students – Classrooms-11 Smart classrooms-1, Garden; Students common room, other facilities MOOT COURT & LIBRARY

- Library as a learning resource- advisory committee, its composition, facilities & services (e & print), annual improvement initiatives

NIL

- Student support services:
 - ✓ IT enabled services

NO

& Health Insurance Schemes)

NO

cally challenged & slow learners; Tutor-Guardian Scheme,
dance Cell.

NIL

✓ Extracurricular activities: Calendar of activities (Sports, Youth Festival, cultural and literary events), Achievements, Awards

NO

✓ Major student welfare initiatives over the past year

NO

- Extension Activities

NO

8. Student Achievements (5 pages)

Highlights the most significant academic and non-academic achievements of students over the past year. This can include major academic awards and scholarships received student research, and sports and other extracurricular activities. Focusses, in particular, on profiling top achievers and describing how resources provided by the college helped these students succeed.

ACADEMIC

- Merit

S.no	Name of the award/ medal/ meritorious scholarship	Name of the recipient	Class	Area of achievement
01	NIL	NIL	NIL	NIL

- Participation

S.no	Name of the event	District Level	State Level	University	National Level
	NIL	NIL	NIL	NIL	NIL

- Awards and Achievements

Name of the student	Class	Event	Award/Achievement
NIL	NIL	NIL	NIL

SPORTS

- Participation

S.no	Name of the event	Division Level	State Level	University/ National Level	International Level
	NIL	NIL	NIL	NIL	NIL

- Awards and Achievements

Name of the student	Class	Sport	Award/Achievement
NIL	NIL	NIL	NIL

9. Research Activities (4 pages)

Identifies major research themes, places these themes in their social and economic context, highlights major research achievements (publications, collaborations, intellectual property produced, external funding received etc.), and profiles top researchers. Lays out the research agenda and identifies themes for the coming year.

- Major research themes

S. No.	Department	Prioritized research area and expertise	Social/ economic context
	<i>NIL</i>	<i>NIL</i>	<i>NIL</i>

- Major/Minor research projects

S. No	Name of the Faculty	Year	Title of the project	Name of funding Agency/ Industry	Total grant received
	NIL	NIL	NIL	NIL	NIL

- Papers presented in regional, national and international seminars/ conferences

S. No.	Name of the faculty	Regional/ State	National	International
	NIL	NIL	NIL	NIL

- Publications in national/ international journals

S.No.	Name of the faculty	Name of the journal	Title of the paper	ISSN/ ISBN number /Impact factor
	NIL	NIL	NIL	NIL

--	--	--	--	--

- List of linkages/ Collaborations/ MOUs

NIL

- College Publications: Research Journal, Magazine, Newsletter

NIL

10. Human Resources (2 pages)

Highlights senior faculty and administrative appointments. Describes what new areas of activity (new courses, research areas, extracurricular activities etc.) and administrative improvements are enabled by these appointments.

1. Faculty and Administrative appointments: Teaching and Non-teaching

Positions	Teaching Faculty	Non Teaching	Technical Staff
-----------	------------------	--------------	-----------------

					Faculty	
Sanctioned by UGC/ University/ State Govt	Prof	Promoted Prof	Assistent Prof	Guest Faculty	08	0
<i>Filled 02</i>	01	0	06	07	0	0
Sanctioned by Management/ Janbhagidari Samiti/ Other authority	0	0	0	0	Janbhagidari 14	
<i>Filled</i>						

2. Guest Faculty: subject-wise appointments

S.no.	Name of the Guest Faculty	Qualification	Subject
01	Dr.Alok Kumar Mishra	LL.M, Ph.D.	LAW
02	Dr.K.D.Tiwari	LL.M, Ph.D.	LAW
03	Dr.Varun Shukla	LL.M, Ph.D,MP.SET	LAW
04	Dr.Manzoor Ahmad Mansoori	LL.M, Ph.D	LAW
05	Shri.Ashish Brij	LL.M, NET	LAW
06	Shri Bhola Prasad Sahu	LL.M, NET	LAW
07	Shri Salil Pandey	LL.M, NET	LAW

3. Annual improvement in academic, research & administrative Initiatives

nil

11. Events and Initiatives (5 pages)

Describes major events including seminars, conferences, competitions, student study trips etc. Focuses on what was achieved and learned, and how the college will follow up.

Describes significant academic, administrative, student support, fundraising, and other initiatives over the past year. The description of each initiative will be structured around the need for the initiative, how it was designed, what resources were used, what results were achieved, and which features of the initiative drove success.

NIL

12. Institutional Development plan (4 pages)

Describes the college's activities over the past year under different schemes, discusses performance against strategic/institutional development plans and commitments over the previous year.

Indicator*	Baseline Value	Target for [current year]	Value as on 30 th September [current year]
NIL	NIL	NIL	NIL

Role of Internal Quality Assurance Cell (IQAC) in academic audit and initiating quality assurance strategies and processes

NIL

13.Placement Report (3 pages)

Describes the college’s placement cell activities, placement rate and salary statistics, and lists major employers and sectors of employment (disaggregated by gender and course studied). Profiles successful alumni and identifies emerging placement trends.

Activities of Placement Cell

S.no.	Name of the activity	Name of the Resource Person/ agency	Date & Duration
	NIL		

Placement Details

S.no.	No. of Students Selected	List of employers/companies	Salary Package
	NIL		

Alumni Profile

S.no.	Name of Alumni	Employment status	Name of the organisation
	NIL		

14. Innovations and Best Practices

NIL

15.SWOC Analysis (strength , weaknesses, Opportunity and Challenges

NIL

16.Looking Ahead (3 pages) Future Plans

Lays out the college’s priorities and goals over the coming year. Describes key initiatives planned, what each initiative is expected to achieve, and how it will contribute to the college’s long term development.

Key Initiatives Planned/ implemented

S. No	Head (administrative/ academic, etc)	Nature of proposal	Expected Outcome
	0		

17. Appendix: Institutional Performance Data and Financial Reports

Provides key data on the institution and its performance, including achievement against strategic plan targets and financial reports. This section is mandatory. All data fields must be completed, in the format and as per the instructions attached.

Part II

Appendix: Institutional Performance Data and Financial Reports (all part II data kindly fill in attached excel sheet)

1. Sanctioned seats and enrolment

(a) Sanctioned Seats					
	SC	ST	Other Reserved Categories	General	Total
Undergraduate	51	64	44	161	320
Postgraduate	06	07	05	19	37
PhD	0	0	0	0	00

Data Source: AISHE

(b) Enrolment							
		Undergraduate			Postgraduate		PhD
		Year 1	Year 2	Year 3	Year 1	Year 2	
SC	Male	06	06	01	04	02	00
	Female	02	00	00	04	00	00
ST	Male	09	05	02	05	00	00
	Female	02	01	01	01	00	00
Other Reserved Categories	Male	30	18	10	03	06	00
	Female	10	11	02	03	01	00
General	Male	73	43	14	06	04	00
	Female	18	09	13	11	00	00
Total	Male	118	72	27	18	10	00
	Female	32	21	16	19	03	00

Data Source: AISHE

Number of sanctioned seats by discipline group and enrolment in the 1 st year as on September 30 th [current year]				
Discipline Group	Undergraduate		Postgraduate	
	Sanctioned Seats	Enrolment	Sanctioned Seats	Enrolment
Arts	NIL	NIL	NIL	NIL
Commerce	NIL	NIL	NIL	NIL
Criminology and Forensic Science	NIL	NIL	NIL	NIL
Cultural Studies	NIL	NIL	NIL	NIL
Defence Studies	NIL	NIL	NIL	NIL
Design	NIL	NIL	NIL	NIL
Disability Studies	NIL	NIL	NIL	NIL
Education	NIL	NIL	NIL	NIL
Fashion Technology	NIL	NIL	NIL	NIL
Fine Arts	NIL	NIL	NIL	NIL
Fisheries Science	NIL	NIL	NIL	NIL
Foreign Languages	NIL	NIL	NIL	NIL
Gandhian Studies	NIL	NIL	NIL	NIL
Home Science	NIL	NIL	NIL	NIL
Indian Languages	NIL	NIL	NIL	NIL
IT & Computer	NIL	NIL	NIL	NIL
Journalism and Mass Communication	NIL	NIL	NIL	NIL
Law	320	182	37	37
Library and Information Science	NIL	NIL	NIL	NIL
Linguistics	NIL	NIL	NIL	NIL
Management	NIL	NIL	NIL	NIL
Marine Science and Oceanography	NIL	NIL	NIL	NIL
Oriental Learning	NIL	NIL	NIL	NIL
Physical Education	NIL	NIL	NIL	NIL

Religious Studies	NIL	NIL	NIL	NIL
Science	NIL	NIL	NIL	NIL
Social Science	NIL	NIL	NIL	NIL
Social Work	NIL	NIL	NIL	NIL
Women Studies	NIL	NIL	NIL	NIL

Data Source: AISHE

2. Transition and on-time graduation

(a) Transition from the 1st year to the 2nd year (Undergraduate)				
		Number of students admitted to the 1 st year in [the previous academic year] (*)	Of (*), the number of students currently enrolled in the 2 nd year who:	
			Passed all subjects in the 1 st year	Were Allowed to Keep Terms
SC	Male	NIL	NIL	NIL
	Female	NIL	NIL	NIL
ST	Male	NIL	NIL	NIL
	Female	NIL	NIL	NIL
Other Reserved Categories	Male	NIL	NIL	NIL
	Female	NIL	NIL	NIL
General	Male	NIL	NIL	NIL
	Female	NIL	NIL	NIL
Total	Male	NIL	NIL	NIL
	Female	NIL	NIL	NIL

Data Source: AISHE, examination results declared by [affiliating university/autonomous college]

(a) Transition from the 1st year to the 2nd year (Postgraduate)				
		Number of students admitted to the 1 st year in [the previous	Of (*), the number of students currently enrolled in the 2 nd year who:	
			Passed all subjects in the 1 st year	Were Allowed to Keep Terms

		academic year] (*)		
SC	Male	NIL	NIL	NIL
	Female	NIL	NIL	NIL
ST	Male	NIL	NIL	NIL
	Female	NIL	NIL	NIL
Other Reserved Categories	Male	NIL	NIL	NIL
	Female	NIL	NIL	NIL
General	Male	NIL	NIL	NIL
	Female	NIL	NIL	NIL
Total	Male	NIL	NIL	NIL
	Female	NIL	NIL	NIL

Data Source: AISHE, examination results declared by [affiliating university/autonomous college]

(b) On-time graduation (Undergraduate)			
		Number of students admitted to the 1 st year in [year t-3] (*)	Of (*), the number of students who passed all final year examinations for the previous academic year
SC	Male	NIL	NIL
	Female	NIL	NIL
ST	Male	NIL	NIL
	Female	NIL	NIL
Other Reserved Categories	Male	NIL	NIL
	Female	NIL	NIL
General	Male	NIL	NIL
	Female	NIL	NIL
Total	Male	NIL	NIL
	Female	NIL	NIL

Data Source: AISHE, examination results declared by [affiliating university/autonomous college]

(b) On-time graduation (Postgraduate)			
		Number of students admitted to the 1st year in [year t-2] (*)	Of (*), the number of students who passed all final year examinations in the current year
SC	Male	NIL	NIL
	Female	NIL	NIL
ST	Male	NIL	NIL
	Female	NIL	NIL
Other Reserved Categories	Male	NIL	NIL
	Female	NIL	NIL
General	Male	NIL	NIL
	Female	NIL	NIL
Total	Male	NIL	NIL
	Female	NIL	NIL

Data Source: AISHE, examination results declared by [affiliating university/autonomous college]

3. Faculty and administrative staff in position and training

(a) Faculty and administrative staff in position as on 30th September, [current year]							
		Reserved					Unreserved
		SC	ST	MP Residents	Females	Others	
Assistant Professor	Sanctioned	NIL	NIL	NIL	NIL	NIL	NIL
	Filled (Regular)	NIL	NIL	NIL	NIL	NIL	NIL
	Filled (Contract)	NIL	NIL	NIL	NIL	NIL	NIL
	Guest	NIL	NIL	NIL	NIL	NIL	NIL

	Lecturers						
Associate Professor	Sanctioned	NIL	NIL	NIL	NIL	NIL	NIL
	Filled (Regular)	NIL	NIL	NIL	NIL	NIL	NIL
	Filled (Contract)	NIL	NIL	NIL	NIL	NIL	NIL
	Guest Lecturers	NIL	NIL	NIL	NIL	NIL	NIL
Professor	Sanctioned	NIL	NIL	NIL	NIL	NIL	NIL
	Filled (Regular)	NIL	NIL	NIL	NIL	NIL	NIL
	Filled (Contract)	NIL	NIL	NIL	NIL	NIL	NIL
	Guest Lecturers	NIL	NIL	NIL	NIL	NIL	NIL
Admin. Staff (all)	Sanctioned	NIL	NIL	NIL	NIL	NIL	NIL
	Filled (Regular)	NIL	NIL	NIL	NIL	NIL	NIL
	Filled (Contract)	NIL	NIL	NIL	NIL	NIL	NIL
Accountant	Sanctioned	NIL	NIL	NIL	NIL	NIL	NIL
	Filled (Regular)	NIL	NIL	NIL	NIL	NIL	NIL
	Filled (Contract)	NIL	NIL	NIL	NIL	NIL	NIL

Data Source: AISHE

(b) Training of faculty and administrative staff between October 1st [previous year] to September 30th [current year]				
		Leadership and management training	Training in the area of academic specialisation	Other training
Assistant Professor	Number trained	NIL	NIL	NIL
	Avg. number of days	NIL	NIL	NIL
Associate	Number trained	NIL	NIL	NIL

Professor	Avg. number of days	NIL	NIL	NIL
Professor	Number trained	NIL	NIL	NIL
	Avg. number of days	NIL	NIL	NIL
Administrative Staff (all)	Number trained	NIL	NIL	NIL
	Avg. number of days	NIL	NIL	NIL
Accountant	Number trained	NIL	NIL	NIL
	Avg. number of days	NIL	NIL	NIL

Data Source: Compiled from training certificates submitted by faculty/administrative staff

(c) Faculty qualifications as on 30th September, [Current Year]					
		PhD	Postgraduate	Undergraduate	Others
Assistant Professor	Regular	NIL	NIL	NIL	NIL
	Contract	NIL	NIL	NIL	NIL
	Guest Lecturers	NIL	NIL	NIL	NIL
Associate Professor	Regular	NIL	NIL	NIL	NIL
	Contract	NIL	NIL	NIL	NIL
	Guest Lecturers	NIL	NIL	NIL	NIL
Professor	Regular	NIL	NIL	NIL	NIL
	Contract	NIL	NIL	NIL	NIL
	Guest Lecturers	NIL	NIL	NIL	NIL

Data Source: AISHE

4. Student support services

(a) Financial support received (from all sources) by students in the college between October 1st [previous year] to September 30th [current year]							
		Undergraduate		Postgraduate		PhD	
		Number	Average Value (Rs.)	Number	Average Value (Rs.)	Number	Average Value (Rs.)
SC	Male	NIL	NIL	NIL	NIL	NIL	NIL
	Female	NIL	NIL	NIL	NIL	NIL	NIL
ST	Male	NIL	NIL	NIL	NIL	NIL	NIL
	Female	NIL	NIL	NIL	NIL	NIL	NIL
General	Male	NIL	NIL	NIL	NIL	NIL	NIL
	Female	NIL	NIL	NIL	NIL	NIL	NIL
Total	Male	NIL	NIL	NIL	NIL	NIL	NIL
	Female	NIL	NIL	NIL	NIL	NIL	NIL

Data Source: AISHE

(a) Financial support received, from the DHE, by students in the college between October 1st [previous year] to September 30th [current year]							
		Undergraduate		Postgraduate		PhD	
		Number	Average Value (Rs.)	Number	Average Value (Rs.)	Number	Average Value (Rs.)
SC	Male	NIL	NIL	NIL	NIL	NIL	NIL
	Female	NIL	NIL	NIL	NIL	NIL	NIL
ST	Male	NIL	NIL	NIL	NIL	NIL	NIL
	Female	NIL	NIL	NIL	NIL	NIL	NIL
General	Male	NIL	NIL	NIL	NIL	NIL	NIL
	Female	NIL	NIL	NIL	NIL	NIL	NIL
Total	Male	NIL	NIL	NIL	NIL	NIL	NIL
	Female	NIL	NIL	NIL	NIL	NIL	NIL

Data Source: College records, DHE

(b) Hostel occupancy as on 30 th September, [Current Year] (all hostels)		
<u>Capacity</u> Males: Females:		Number of residents
SC	Male	NIL
	Female	NIL
ST	Male	NIL
	Female	NIL
General	Male	NIL
	Female	NIL
Total	Male	NIL
	Female	NIL

Data Source: Hostel register verified against fee receipts on record

(c) Hostel occupancy as on 30 th September, [Current Year] (girls only hostels opened after _____)	
<u>Capacity</u>	Number of residents
SC	NIL
ST	NIL
General	NIL
Total	NIL

Data Source: Hostel register verified against fee receipts on record

5. Examination Results

(a) Examination results for [previous academic year] (undergraduate)											
		SC		ST		Other Reserved Categories		General		Total	
		M	F	M	F	M	F	M	F	M	F
1 st	Appeared	6	2	9	2	30	10	73	18	118	32

(a) Examination results for [previous academic year] (postgraduate)											
		SC		ST		Other Reserved Categories		General		Total	
		M	F	M	F	M	F	M	F	M	F
1st year	Appeared	4	4	5	1	3	3	6	11	18	19
	1 st division	0	0	0	0	0	0	0	0	0	0
	2 nd Division	4	4	5	1	2	2	5	11	16	18
	3 rd Division	0	0	0	0	0	0	0	0	0	0
2nd year	Appeared	2	0	0	0	6	1	4	0	10	3
	1 st division	0	0	0	0	0	0	0	0	0	0
	2 nd Division	2	0	0	0	6	1	4	0	10	3
	3 rd Division	0	0	0	0	0	0	0	0	0	0

Data Source: AISHE, Examination results declared by [affiliating university/autonomous college]

Data Source: AISHE, Examination results declared by [affiliating university/autonomous college]

6. Placement and student tracking

(a) Placement and Tracking of Students who graduated in [previous academic year] (Undergraduate)						
		Number of students who graduated in [the previous academic year] (*)	Of (*), the number of students who were successfully tracked and are:			
			Employed/ Self-employed	In education/ training	Unemployed	Not in the labour force
SC	Male	NIL	NIL	NIL	NIL	NIL
	Female	NIL	NIL	NIL	NIL	NIL
ST	Male	NIL	NIL	NIL	NIL	NIL
	Female	NIL	NIL	NIL	NIL	NIL
General	Male	NIL	NIL	NIL	NIL	NIL
	Female	NIL	NIL	NIL	NIL	NIL
Total	Male	NIL	NIL	NIL	NIL	NIL
	Female	NIL	NIL	NIL	NIL	NIL

Data Source: Records of the college placement cell

(b) Placement and Tracking of Students who graduated in [previous academic year] (Postgraduate)						
		Number of students who graduated in [the previous academic year] (*)	Of (*), the number of students who were successfully tracked and are:			
			Employed/ Self-employed	In education/ training	Unemployed	Not in the labour force
SC	Male	NIL	NIL	NIL	NIL	NIL
	Female	NIL	NIL	NIL	NIL	NIL
ST	Male	NIL	NIL	NIL	NIL	NIL
	Female	NIL	NIL	NIL	NIL	NIL
General	Male	NIL	NIL	NIL	NIL	NIL
	Female	NIL	NIL	NIL	NIL	NIL
Total	Male	NIL	NIL	NIL	NIL	NIL
	Female	NIL	NIL	NIL	NIL	NIL

Data Source: Records of the college placement cell

7. PhDs Awarded

Number of PhDs awarded between October 1st [previous year] to September 30th [current year]	
Discipline Group	Number
Arts	NIL
Commerce	NIL
Criminology and Forensic Science	NIL
Cultural Studies	NIL
Defence Studies	NIL
Design	NIL
Disability Studies	NIL

Education	NIL
Fashion Technology	NIL
Fine Arts	NIL
Fisheries Science	NIL
Foreign Languages	NIL
Gandhian Studies	NIL
Home Science	NIL
Indian Languages	NIL
IT & Computer	NIL
Journalism and Mass Communication	NIL
Law	NIL
Library and Information Science	NIL
Linguistics	NIL
Management	NIL
Marine Science and Oceanography	NIL
Oriental Learning	NIL
Physical Education	NIL
Religious Studies	NIL
Science	NIL
Social Science	NIL
Social Work	NIL
Women Studies	NIL
Literature	NIL
Other	NIL
All disciplines	NIL

Data Source: AISHE

8. Research and consultancy

Revenue generated through externally funded research and consultancies over [previous financial year]		
Discipline Group	Number of active projects	Total Revenue Generated (Rs. lakhs)
Arts	NIL	NIL
Commerce	NIL	NIL
Criminology and Forensic Science	NIL	NIL
Cultural Studies	NIL	NIL
Defence Studies	NIL	NIL
Design	NIL	NIL
Disability Studies	NIL	NIL
Education	NIL	NIL
Fashion Technology	NIL	NIL
Fine Arts	NIL	NIL
Fisheries Science	NIL	NIL
Foreign Languages	NIL	NIL
Gandhian Studies	NIL	NIL
Home Science	NIL	NIL
Indian Languages	NIL	NIL
IT & Computer	NIL	NIL
Journalism and Mass Communication	NIL	NIL
Law	NIL	NIL
Library and Information Science	NIL	NIL
Linguistics	NIL	NIL
Management	NIL	NIL
Marine Science and Oceanography	NIL	NIL
Oriental Learning	NIL	NIL
Others / Inter-disciplinary	NIL	NIL
Physical Education	NIL	NIL
Religious Studies	NIL	NIL

Science	NIL	NIL
Social Science	NIL	NIL
Social Work	NIL	NIL
Veterinary and Animal Sciences	NIL	NIL
Women Studies	NIL	NIL
All disciplines	NIL	NIL

Data Source: College/university records

Number of papers published in peer-reviewed journals between October 1 st [previous year] to September 30 th [current year]			
Discipline Group	Number of papers published		Number of published papers through cross-institute research collaboration
	International Journals	National Journals	
Arts	NIL	NIL	NIL
Commerce	NIL	NIL	NIL
Criminology and Forensic Science	NIL	NIL	NIL
Cultural Studies	NIL	NIL	NIL
Defence Studies	NIL	NIL	NIL
Design	NIL	NIL	NIL
Disability Studies	NIL	NIL	NIL
Education	NIL	NIL	NIL
Fashion Technology	NIL	NIL	NIL
Fine Arts	NIL	NIL	NIL
Fisheries Science	NIL	NIL	NIL
Foreign Languages	NIL	NIL	NIL
Gandhian Studies	NIL	NIL	NIL
Home Science	NIL	NIL	NIL
Indian Languages	NIL	NIL	NIL
IT & Computer	NIL	NIL	NIL
Journalism and Mass Communication	NIL	NIL	NIL

Law	NIL	NIL	NIL
Library and Information Science	NIL	NIL	NIL
Linguistics	NIL	NIL	NIL
Management	NIL	NIL	NIL
Marine Science and Oceanography	NIL	NIL	NIL
Oriental Learning	NIL	NIL	NIL
Others / Inter-disciplinary	NIL	NIL	NIL
Physical Education	NIL	NIL	NIL
Religious Studies	NIL	NIL	NIL
Science	NIL	NIL	NIL
Social Science	NIL	NIL	NIL
Social Work	NIL	NIL	NIL
Women Studies	NIL	NIL	NIL
All disciplines	NIL	NIL	NIL

Date Source: College records based on published papers submitted by faculty

9. NAAC accreditation and UGC autonomy

	Date of Application (LOI & SSR submitted)	Date on which accreditation was received	Grade	Valid till
1 st Cycle	NIL			
2 nd Cycle	NIL			
3 rd Cycle	NIL			

Date of submission of the Annual Quality Assurance Report for the current year: _____.

Does the college have currently valid UGC autonomy? _____ . If yes, by order number _____, dated _____.

10. Institutional Trends

Variable	Baseline Value	[Year 1]	[Year 2]	[Year 3]	[Year 4]	Current Year
Percentage of sanctioned seats in the 1 st year filled (undergraduate, all categories)	NIL					
Percentage of sanctioned seats in the 1 st year filled (postgraduate, all categories)	NIL]		
Transition rate from the 1 st year to the 2 nd year (undergraduate, all categories)	NIL					
On-time graduation rate (undergraduate, all categories)	NIL					
Transition rate from the 1 st year to the 2 nd year (post graduate, all categories)	NIL					
On-time graduation rate (postgraduate, all categories)	NIL					
Regular faculty in position rate (all levels, reserved categories)	NIL					

Regular faculty in position rate (all levels, unreserved categories)	NIL					
Percentage of regular faculty with PhDs (all levels)	NIL					
Employment rate of graduates from the previous academic year (undergraduate, all categories)	NIL					
Employment rate of graduates from the previous academic year (postgraduate, all categories)	NIL					
Percentage of total revenue generated through externally funded research	NIL					
Number of papers published in peer-reviewed, international journals	NIL					

Source: Tables under section 1-8.

11. Financial Reports

Name and registration number of the auditor _____.

Number of audit observations recorded by the auditor _____.

Number of audit responses found satisfactory, as certified by the project directorate _____.

Certified audit reports as per the standard Chart of Accounts to be attached.

12. All India Survey of Higher Education

Date on which all applicable fields of the Data Collection Format for the All India Survey of Higher Education were completed and submitted

Instructions

- All data is to be reported as on 30th September of the current year.
- Postgraduate courses refer to courses at the Masters and MPhil level.
- The number of sanctioned seats is the number of students the college is authorized, by the UGC/DHE/affiliating University, to admit in the first year of its degree programs.
- The number of sanctioned faculty posts is the number of faculty the college is authorized, by the UGC/DHE/affiliating University, to recruit on a full-time basis.
- Enrolment is defined as the number of students who have paid their admission fees for joining a degree program by September 30 of the respective academic year.
- Admission is defined as the number of students who have paid their admission fees for joining a degree program, in the first year, by September 30 of the respective academic year and who have never been enrolled in that degree program previously.
- Other Reserved Categories include all categories of students (for e.g. sports quota, extracurricular quota, residents of Jammu and Kashmir etc.) for whom a fixed percentage of sanctioned seats are reserved.
- Examination results are to be reported for examinations held in the previous academic year, and the results for which were declared by 30th September of the current year.
- Allowed to keep terms refers to students who did not pass all subjects in the previous year but were allowed to transition to the next year of their respective degree programs.
- Regular faculty refers to faculty employed on open-ended, full-time contracts as per UGC norms.
- Contract faculty refers to faculty employed on fixed term, full-time contracts as per UGC norms.
- Guest Lecturers refers to faculty employed on a per lecture or per day basis as per UGC norms.
- Data on scholarships is to be reported on all scholarships awarded between 1st October of the previous year and 30th September of the current year.
- A hostel seat is considered occupied if a student has been allotted a seat in the hostel and the student, to whom the seat was allotted, has paid the hostel fee for the current academic year.
- Examination results refers to the average score obtained by a student, in the respective academic year, across all exams that are used to assess whether the student has met the requirement of the degree program in which he/she is enrolled.

- Student tracking refers to having up to date contact information (mobile phone and/or email address) and status (employment, unemployed, in formal education or training, not in the labour market/other) for each student for up to six from the end of the academic year when the student passed out (graduated).
- Externally funded research and consultancies refer to research and/or development funded through consultancy contracts or partnerships with a sponsor or purchaser who is external to the institution.
- A peer-reviewed journal is one that subjects an author's research to review and evaluation by others who are experts in the same field, before the research is published.
- An international journal is one that has an International Standard Serial Number (ISSN) issued by the ISSN International Centre.
- A paper is said to be published through cross-institute research collaboration if the primary affiliation of at least two authors is to different colleges/institutions.
- The institutional performance indicators common across all institutions can be found in the PIP. Institution-specific performance indicators can be found in the MOU signed between the Institution and the Department of Higher Education.
- The standard Chart of Accounts refers to the standard format for audit reports as notified by the Department of Higher Education through its orders.

PRINCIPAL
GOVT LAW COLLEGE,REWA