

A.S.R.M.Government college, Sontkatch

Annual Report 2016-17

This format outlines the annual reports to be published by all colleges in the Madhya Pradesh on their websites, by October 31st of each year. Part I is intended as a guide and colleges are free to alter the contents and format as they see fit. Part II, the Appendix (Institutional Performance Data and Financial Reports), is mandatory and colleges are required to report all data as per the attached format and instructions.

Important Information –

- Name of the college –A.S.R.M.Government college, Sontkatch
- Place of the college – Bawai road Sontkatch
- District -Dewas
- Division -Ujjain
- Year of establishment of college -1970
- Name and Contact details(Mail id , Phone) of Principal –Dr. Rakesh Mahajan contact:9425306029,drrakeshmahajan18@gmail.com
- Name , Post and Contact details of (mail id, Phone no.) of Reporting In charge – Dr B.L.patidar contact:9827252932 mail.drblpatidar@yahoo.co.in
- Date of report submission -13-Sep-2016

Part I

- 1. The Principal's Report (2 pages)-** Highlights the key activities, events, and successes of the past year and briefly describes major new initiatives to be undertaken over the next year.

Key activities-

- (a) Personality development programme.
- (b) Career Guidance.
- (c) Social services through NSS.
- (d) Environment awareness through NSS.
- (e) Sports activities.
- (f) Activities Under "Swachata Abhiyan"
- (g) Class room teaching by audio visual system.

Events-

- (1) Youth festival.
- (2) District level youth festival organized.
- (3) Workshop on career guidance.
- (4) Work shop on AIDS through red ribbon club.
- (5) Organization of annual function.
- (6) Sports activities.
- (7) Moral/social activities through NSS.
- (8) Conduction of Zero Classes.

Success-

- (1) Participation of students in district level youth festival activities.
- (2) Active participation of Student in "Swachata Abhiyan"
- (3) Participation of students in District & divisional level sport activities.
- (4) Enrolment of female student is increased.
- (5) 85 female students got govt. Scholarship under "gaov ki beti" scheme.
- (6) 200+ student got Scholarship under post metric scholarship scheme.
- (7) 50+female student got Scholarship under "Aavagaman" Scheme.

New initiatives-

- (1) Steps Taken to Increase GER.
- (2) Steps taken towards Female Empowerment.
- (3) Steps Taken to Increase Campus selection.
- (4) Steps Taken towards Self defence program for girls student.
- (5) Steps Taken to Introduce NCC unit in .

2. Overview (1 page)

- (i) Vision, Mission and Objectives of the college

Institute analyzes the stated objectives of curriculum with reference to the results of the students declared by the university.

- (ii) Brief introduction of the college (including the status (Govt. / Lead/ Constituent/ Affiliated/ Private), Parent University, UGC recognition, CPE status, etc), location & campus area

Govt. College sonkatch is affiliated with vikram university Ujjain. This college is recognised from U.G.C. under 2f & 12b . This College is situated in rural area.

- (iii) History of the college with significant milestones

This college was established in the year 1970 . In year 1983 college was taken over by govt. Of Madhya Pradesh. Although It is UG College but Some PG Courses are running successfully i.e.

M.A. POL.SC

M.A.ECO.

M.COM.

Beside that some vocation courses are also running at UG Level i.e.-

B.COM. COMPUTER APPLICATION.

B.A. COMPUTER APPLICATION.

B.SC.COMPUTER SCIENCE

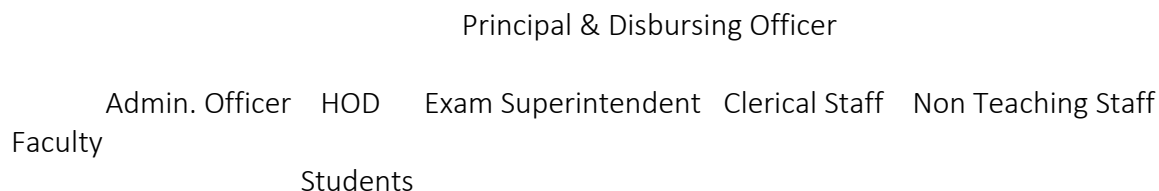
(iv) Faculties and major disciplines

Faculties:- Commerce Arts Science
Disciplines:- At UG Level BCOM Plain BCOM Computer Application BA Plain BA Computer Application BSC Computer Science At PG Level MCOM MA Pol. Sc. MA Economics

3. Senior Management Team and Board of Governors (1 page)

Lists the members of the senior management team (Principal, Registrar, Deans etc.) and members of the Board of Governors including their designations and professional backgrounds.

Administrative Hierarchy



Janbhagidari Samiti-

Chair Person-Shri Rajendra Fulchand Verma (M.L.A.)

4. Admission Statistics (1 page)

- The number of applicants at the UG and PG level who ranked the college as their 1st, 2nd and 3rd preference, the number of applications received for PhD courses, and the number of students admitted at each level as per the following format.

Applications	UG	PG	PhD
Applications that ranked the college as the 1 st preference	165	29	NA
Applications that ranked the college as the 2 nd preference	45	09	
Applications that ranked the college as the 3 rd preference	22	08	
Total number of applications received	260	46	NIL
Number of students admitted	232	40	NIL

Data Source: E-pravesh portal, records of the affiliating university

- A brief demographic profile of students admitted (in terms of gender, caste, whether from MP etc.)

Name of the Course	Gender	Category	% of students from the State	% of students from other states
N/A	N/A	N/A	N/A	N/A
N/A	N/A	N/A	N/A	N/A
N/A	N/A	N/A	N/A	N/A
N/A	N/A	N/A	N/A	N/A
N/A	N/A	N/A	N/A	N/A
N/A	N/A	N/A	N/A	N/A

5. Academic Programs: Core Programs - UG & PG

Core programs at UG level

Stream	Name of the Core Program	Eligibility	Optional subjects
ArtS	B.A.PLAIN	10+2 from a recognized Board OR 10+2 with relevant vocational course from M.P. Board	Foundation course + a group of 3 optional subjects
commerce	B.com plain	10+2 from a recognized Board OR 10+2 with relevant vocational	Foundation course + a group of 3 compulsory subjects

Core Options at PG level

Faculty	Name of the Core Program	Eligibility	Subject Options
ARTS	M.A.	3 year Degree course in any faculty/ Honours degree course in same subject	4 SUBJECT IN EACH SEMESTER
COMMERCE	M.COM.	3 year Degree course in COMMERCE faculty/ Honours degree course in same subject	4 SUBJECT IN EACH SEMESTER

M.Phil/ Ph.D. Programs

S.no.	Subject	Eligibility	No. of scholars registered
NIL	NIL	NIL	NIL

PG Diploma/ Diploma/ Certificate/ Self-financed/ Skill based Vocational/ Short term courses

Name of the Course	Department	Duration	Fees	Seats
B.A.com.app.	Arts	03 year	3500	50
B.com.com.app	commerce	03 year	3500	50
B.sc.com.science	science	03 year	4000	50

Academic Calendar 2016 - 2017

Academic Work	First/ Semester	Third/ Fifth	Second/ Fourth/ Sixth Semester
Orientation Classes/Zero Classes/SWOT analysis	01 july to 13 july 2016		02 january 2017
Teaching and Continuous Comprehensive Evaluation	14 july to 07 november 2016		03 january to 25 april 2017
CCE Schedule	September fourth week		March second week
Preparation Leave	08 november to 14 november 2016		26 april to 27 april 2017
Practical Exams (Graduation/Post Graduation)	15 octomber to 07 november 2016		25 march to 25 april 2017
Semester and ATKT Exams	15 november to 21 december 2016		28 april to 26 may 2017
Declaration of Examination Results	31 december 2016		15 jun 2017
Semester Break (for students)	22 december to 31 december 2016		27 may to 30 june 2017
Semester Break (for teachers)	22 december to 31 december 2016		27 may to 15 jun 2017

6. The Student Experience (4 pages)

Briefly describes student life in the college:

- Infrastructural facilities available to students - Classrooms, Smart classrooms, laboratories and equipment, Common Research Lab, Hostel; Canteen; Garden; Students common room, Auditorium, Sports Complex & other facilities

The college provides under graduate programmemes and PG courses in pol.sc. commerce and economics. The college does not have a tracking system to systematically record the progress to higher education/employment profile of all its graduating students.

Large play ground.

Boys common room is also equipped with indoor games facility.

There is a ground for football & cricket, volleyball court, badminton court in the college campus.

- Library as a learning resource- advisory committee, its composition, facilities & services (e & print), annual improvement initiatives

Yes , the library has an advisory committee.

The library advisory committee is composed of :

Coordinator –senior profession

Member –two asitt. Professors

Initiatives :

Working to makes the library as user-friendly.

Provide books to all needy students

Provide popular newspapers & magazine to students for library reading try to provide competition exam. Based magazine and books for multitalented students

To provide stationary and textbook to sc/st students

- Student support services:
 - ✓ IT enabled services

WIFI FACILITIES IN COLLEGE CAMPUS

Post metric scholarship for SC/ST/OBC and financial assistace through Vikrmaditya yojna for unreserved students [economically weaker] are available.

Student with physical dasabilities :

Handicapped scholarship are provided as per state govt. Norms.

Avas yojna :As per state govt. Norms.

Aawagaman yojna : Applicable for girls students only : As per state govt. Norms.

- ✓ Personal enhancement & development schemes- NCC, NSS, Facilities for physically challenged & slow learners; Tutor-Guardian Scheme, Grievance Redressal Cell, Entrepreneurship Cell, Remedial classes, Career Guidance Cell.

NSS UNIT RUNNING IN COLLEGE FOR 50 STUDENT

SWAMI VIVEKANAND CAREER GUIDANCE CELL RUNNING IN COLLEGE to support for career guidance

Remedial coaching classes for sc/st/and obc students group discussion among student

- ✓ Extracurricular activities: Calendar of activities (Sports, Youth Festival, cultural and literary events), Achievements, Awards

Sports facility and youth festival activities are organised in college.

- ✓ Major student welfare initiatives over the past year

Red Ribon Club works for awareness building among the students and community people about HIV/AIDS. The club participates/ organizes easy contest, poster gallery presentation, awareness generating workshop on HIV/AIDS with the help of ITCT sonkatch.

- Extension Activities

The college always organizes different extension activities in and outside the campus throughout the year to engage the students in different community oriented activities to develop a sense of social responsibility, service orientation and holistic development of the students. The college has active NSS unit, Red Ribon Club (RRC). The college has 100 volunteers of NSS unit with a faculty member as the programmeme officer. Under this unit there is a Red Ribon Club. NSS organizes/participates/observes different activity/ programmemes: such as swachhta abhiyan, SVEEP,SENSE, plantation etc. Students are advised to follow practices like surya namaskar, meditation, nasha mukti etc for holistic development. Red Ribon Club works for awareness building among the students and community people about HIV/AIDS. The club participates/ organizes easy cotest, poster gallery presentatation, awareness generation workshop on HIV/AIDS with the help of ITCT sonkatch.

7. Student Achievements (5 pages)

Highlights the most significant academic and non-academic achievements of students over the past year. This can include major academic awards and scholarships received student research, and sports and other extracurricular activities. Focusses, in particular, on profiling top achievers and describing how resources provided by the college helped these students succeed.

ACADEMIC

- Merit

S.no	Name of the award/ medal/ meritorious scholarship	Name of the recipient	Class	Area of achievement
NIL	NIL	NIL	NIL	NIL
NIL	NIL	NIL	NIL	NIL
NIL	NIL	NIL	NIL	NIL
NIL	NIL	NIL	NIL	NIL
NIL	NIL	NIL	NIL	NIL
NIL	NIL	NIL	NIL	NIL
NIL	NIL	NIL	NIL	NIL
NIL	NIL	NIL	NIL	NIL
NIL	NIL	NIL	NIL	NIL
NIL	NIL	NIL	NIL	NIL
NIL	NIL	NIL	NIL	NIL
NIL	NIL	NIL	NIL	NIL
NIL	NIL	NIL	NIL	NIL
NIL	NIL	NIL	NIL	NIL
NIL	NIL	NIL	NIL	NIL
NIL	NIL	NIL	NIL	NIL

- Research scholarship/ award

S.no	Name of the scholarship award/	Name of the recipient	Class	Area of research
NIL	NIL	NIL	NIL	NIL
NIL	NIL	NIL	NIL	NIL
NIL	NIL	NIL	NIL	NIL
NIL	NIL	NIL	NIL	NIL
NIL	NIL	NIL	NIL	NIL
NIL	NIL	NIL	NIL	NIL
NIL	NIL	NIL	NIL	NIL
NIL	NIL	NIL	NIL	NIL
NIL	NIL	NIL	NIL	NIL
NIL	NIL	NIL	NIL	NIL

CULTURAL

- Participation

S.no	Name of the event	District Level	State Level	University	National Level
NIL	NIL	NIL	NIL	NIL	NIL
NIL	NIL	NIL	NIL	NIL	NIL
NIL	NIL	NIL	NIL	NIL	NIL
NIL	NIL	NIL	NIL	NIL	NIL
NIL	NIL	NIL	NIL	NIL	NIL
NIL	NIL	NIL	NIL	NIL	NIL

- Awards and Achievements

Name of the student	Class	Event	Award/Achievement
NIL	NIL	NIL	NIL
NIL	NIL	NIL	NIL
NIL	NIL	NIL	NIL
NIL	NIL	NIL	NIL
NIL	NIL	NIL	NIL
NIL	NIL	NIL	NIL
NIL	NIL	NIL	NIL
NIL	NIL	NIL	NIL
NIL	NIL	NIL	NIL
NIL	NIL	NIL	NIL

SPORTS

- Participation

S.no	Name of the event	Division Level	State Level	University/ National Level	International Level
1	Volly ball	03	-	-	-
2	kabbadi	04	-	-	-
3	football	03	-	-	-

- Awards and Achievements

Name of the student	Class	Sport	Award/Achievement
NIL	NIL	NIL	NIL
NIL	NIL	NIL	NIL
NIL	NIL	NIL	NIL
NIL	NIL	NIL	NIL
NIL	NIL	NIL	NIL
NIL	NIL	NIL	NIL
NIL	NIL	NIL	NIL

8. Research Activities (4 pages)

Identifies major research themes, places these themes in their social and economic context, highlights major research achievements (publications, collaborations, intellectual property produced, external funding received etc.), and profiles top researchers. Lays out the research agenda and identifies themes for the coming year.

- Major research themes

S. No.	Department	Prioritized research area and expertise	Social/ economic context
NIL	NIL	NIL	NIL
NIL	NIL	NIL	NIL
NIL	NIL	NIL	NIL
NIL	NIL	NIL	NIL

- Major/Minor research projects

S. No	Name of the Faculty	Year	Title of the project	Name of funding Agency/ Industry	Total grant received
NIL	NIL	NIL	NIL	NIL	NIL
NIL	NIL	NIL	NIL	NIL	NIL
NIL	NIL	NIL	NIL	NIL	NIL
NIL	NIL	NIL	NIL	NIL	NIL
NIL	NIL	NIL	NIL	NIL	NIL
NIL	NIL	NIL	NIL	NIL	NIL

- Papers presented in regional, national and international seminars/ conferences

S. No.	Name of the faculty	Regional/ State	National	International
1	Arts	-	06	-
2	commerce	-	07	-

- Publications in national/ international journals

S.No.	Name of the faculty	Name of the journal	Title of the paper	ISSN/ ISBN number /Impact factor
1	Dr. B.L. Patidar	Golden Reasearch Thoughts	Start-UPS in india growth, challenges and opportunities	22315063/Impact factor 3.4052 UIF
2	Dr. B.L. Patidar	Golden Reasearch Thoughts	Emerging trend of e-retailing in india : prospects and challenges	22315063/3.4052
3	Dr. Manoj Mahajan	Divya shodh samiksha	Bharat me saksharta	23943807/1.7591
4	Dr. Manoj Mahajan	Navin shodh sansar	PMJDY & MUDRA Bank	23208767/1.9411
5	Dr Richa Mehata	The international research	65-72 Aadhunic jivan sheli	23204702/1.002
6	Dr Richa Mehata	I.R. R. navin shodh sansar	143-144 Gharelu hinsha	23208767/1.9411

7	Prof. Sujata Naik	The research for social science	Genral managment	23204702/1.002
8	Prof. Sujata Naik	Navin shodh sansar	Vardha avashta	23208667/1.9411
9	Dr.Sudhir Mahajan	Divya shodh samiksha	Bharat me saksharta	23943807/1.7591
10	Dr. Sudhir Mahajan	Navin shodh sansar	PMJDY & MUDRA Bank	23208767/1.9411

- List of linkages/ Collaborations/ MOUs

NIL

- College Publications: Research Journal, Magazine, Newsletter

NIL

9. Human Resources (2 pages)

Highlights senior faculty and administrative appointments. Describes what new areas of activity (new courses, research areas, extracurricular activities etc.) and administrative improvements are enabled by these appointments.

1. Faculty and Administrative appointments: Teaching and Non-teaching

Positions	Teaching Faculty				Non Teaching Faculty	Technica l Staff
	Prof	Promot ed Prof	Assista nt Prof	Guest Faculty		
Sanctioned by UGC/ University/ State Govt					-	-
<i>Filled</i>	-	02	07	05	01	-
Sanctioned by Management/	-	-	-	-	-	-

Janbhagidari Samiti/ Other authority						
<i>Filled</i>	-	-	-	03	02	01

2. Guest Faculty: subject-wise appointments

S.no.	Name of the Guest Faculty	Qualification	Subject
1	Suresh sarothiya	M.A. Net	hindi
2	Purva uppadyam	M.A. NET	English
3	Mohan baghel	M.A. NET	Economics
4	Varsha jaiswal	M.A. Ph.d	Poltical science
5	Anjali aggrawal	m.sc.Net	Physics

3. Annual improvement in academic, research & administrative Initiatives

One ph.d in sociology .Student awarded ph.d and two student submitted ph.d thesis. 100 percentage result in all subject.

I

10.Events and Initiatives (5 pages)

Describes major events including seminars, conferences, competitions, student study trips etc. Focuses on what was achieved and learned, and how the college will follow up.

Describes significant academic, administrative, student support, fundraising, and other initiatives over the past year. The description of each initiative will be structured around the need for the initiative, how it was designed, what resources were used, what results were achieved, and which features of the initiative drove success.

NIL

NIL	NIL	NIL	NIL
NIL	NIL	NIL	NIL

Placement Details

S.no.	No. of Students Selected	List of employers/companies	Salary Package
NIL	NIL	NIL	NIL
NIL	NIL	NIL	NIL
NIL	NIL	NIL	NIL
NIL	NIL	NIL	NIL
NIL	NIL	NIL	NIL
NIL	NIL	NIL	NIL

Alumni Profile

S.no.	Name of Alumni	Employment status	Name of the organisation
NIL	NIL	NIL	NIL
NIL	NIL	NIL	NIL
NIL	NIL	NIL	NIL
NIL	NIL	NIL	NIL
NIL	NIL	NIL	NIL
NIL	NIL	NIL	NIL
NIL	NIL	NIL	NIL
NIL	NIL	NIL	NIL

13. Innovations and Best Practices

Innovations:-construction of new two classroom & one staff room.

- Physics lab is equipped with instruments
- Computer lab is equipped with latest computer system

Best practices:-To widen access to higher education.

To create equity and access to its students from disadvantage community, women, minority-community and economically weaker section of the society.

14. SWOC Analysis (strength , weaknesses, Opportunity and Challenges

Strength:-vast experienced faculty members.

Organized, punctual and faculty members.

Enthusiastic student.

Weaknesses:-lack of national and international journals and reference books.

Lack of diversity in available commerce based PG & further courses.

Opportunities:-vacational course such as computer application is available for the students.

Good number of text books and reference books are available in the central library and students are using as per their requirements.

15. Looking Ahead (3 pages) Future Plans

Lays out the college's priorities and goals over the coming year. Describes key initiatives planned, what each initiative is expected to achieve, and how it will contribute to the college's long term development.

Key Initiatives Planned/ implemented

S. No	Head (administrative/ academic, etc)	Nature of proposal	Expected Outcome
NIL	NIL	NIL	NIL
NIL	NIL	NIL	NIL
NIL	NIL	NIL	NIL
NIL	NIL	NIL	NIL
NIL	NIL	NIL	NIL
NIL	NIL	NIL	NIL
NIL	NIL	NIL	NIL
NIL	NIL	NIL	NIL
NIL	NIL	NIL	NIL
NIL	NIL	NIL	NIL
NIL	NIL	NIL	NIL
NIL	NIL	NIL	NIL
NIL	NIL	NIL	NIL
NIL	NIL	NIL	NIL

16. Appendix: Institutional Performance Data and Financial Reports

Provides key data on the institution and its performance, including achievement against strategic plan targets and financial reports. This section is mandatory. All data fields must be completed, in the format and as per the instructions attached.

Part II

Appendix: Institutional Performance Data and Financial Reports (all part II data kindly fill in attached excel sheet)

1. Sanctioned seats and enrolment

(a) Sanctioned Seats					
	SC	ST	Other Reserved	General	Total

			Categories		
Undergraduate	46	58	41	145	290
Postgraduate	11	14	10	35	70
PhD	NIL	NIL	NIL	NIL	NIL

Data Source: AISHE

(b) Enrolment							
		Undergraduate			Postgraduate		PhD
		Year 1	Year 2	Year 3	Year 1	Year 2	
SC	Male	66	10	19	05	03	--
	Female	25	13	14	01	03	--
ST	Male	02	--	--	--	--	--
	Female	--	--	--	--	--	--
Other Reserved Categories	Male	109	21	21	06	03	--
	Female	93	25	21	03	06	--
General	Male	32	--	15	02	03	--
	Female	21	15	08	08	06	--
Total	Male	209	31	55	13	09	--
	Female	139	53	43	12	15	--

Data Source: AISHE

Number of sanctioned seats by discipline group and enrolment in the 1 st year as on September 30 th [current year]				
Discipline Group	Undergraduate		Postgraduate	
	Sanctioned Seats	Enrolment	Sanctioned Seats	Enrolment
Arts	--	--	--	--
Commerce	160	138	40	17
Criminology and Forensic Science	80	73	30	23
Cultural Studies	--	--	--	--
Defence Studies	--	--	--	--
Design	--	--	--	--
Disability Studies	--	--	--	--
Education	--	--	--	--
Fashion Technology	--	--	--	--
Fine Arts	--	--	--	--
Fisheries Science	--	--	--	--
Foreign Languages	--	--	--	--
Gandhian Studies	--	--	--	--
Home Science	--	--	--	--
Indian Languages	--	--	--	--
IT & Computer	--	--	--	--
Journalism and Mass Communication	--	--	--	--
Law	--	--	--	--
Library and Information Science	--	--	--	--

Linguistics	--	--	--	--
Management	--	--	--	--
Marine Science and Oceanography	--	--	--	--
Oriental Learning	--	--	--	--
Physical Education	--	--	--	--
Religious Studies	--	--	--	--
Science	50	21	--	--
Social Science	--	--	--	--
Social Work	--	--	--	--
Women Studies	--	--	--	--

Data Source: AISHE

2. Transition and on-time graduation

(a) Transition from the 1st year to the 2nd year (Undergraduate)				
		Number of students admitted to the 1 st year in [the previous academic year] (*)	Of (*), the number of students currently enrolled in the 2 nd year who:	
			Passed all subjects in the 1 st year	Were Allowed to Keep Terms
SC	Male	67	38	3year
	Female	59	47	3year
ST	Male	02	01	3year
	Female	-	-	3year
Other Reserved Categories	Male	112	89	3year
	Female	89	62	3year
General	Male	95	48	3year
	Female	93	61	3year
Total	Male	274	176	3year
	Female	241	170	3year

Data Source: AISHE, examination results declared by [affiliating university/autonomous college]

(a) Transition from the 1st year to the 2nd year (Postgraduate)				
		Number of students admitted to the 1 st year in [the previous academic year] (*)	Of (*), the number of students currently enrolled in the 2 nd year who:	
			Passed all subjects in the 1 st year	Were Allowed to Keep Terms
SC	Male	08	05	2year
	Female	07	04	2year
ST	Male	-	-	2year
	Female	-	-	2year
Other Reserved Categories	Male	14	09	2year
	Female	15	11	2year
General	Male	07	06	2year

	Female	03	02	2year
Total	Male	29	20	2year
	Female	25	17	2year

Data Source: AISHE, examination results declared by [affiliating university/autonomous college]

(b) On-time graduation (Undergraduate)			
		Number of students admitted to the 1 st year in [year t-3] (*)	Of (*), the number of students who passed all final year examinations for the previous academic year
SC	Male	NIL	NIL
	Female	NIL	NIL
ST	Male	NIL	NIL
	Female	NIL	NIL
Other Reserved Categories	Male	NIL	NIL
	Female	NIL	NIL
General	Male	NIL	NIL
	Female	NIL	NIL
Total	Male	NIL	NIL
	Female	NIL	NIL

Data Source: AISHE, examination results declared by [affiliating university/autonomous college]

(b) On-time graduation (Postgraduate)			
		Number of students admitted to the 1 st year in [year t-2] (*)	Of (*), the number of students who passed all final year examinations in the current year
SC	Male	NIL	NIL
	Female	NIL	NIL
ST	Male	NIL	NIL
	Female	NIL	NIL
Other Reserved Categories	Male	NIL	NIL
	Female	NIL	NIL
General	Male	NIL	NIL
	Female	NIL	NIL
Total	Male	NIL	NIL
	Female	NIL	NIL

Data Source: AISHE, examination results declared by [affiliating university/autonomous college]

3. Faculty and administrative staff in position and training

(a) Faculty and administrative staff in position as on 30th September, [current year]							
		Reserved					Unreserved
		SC	ST	MP Residents	Females	Others	
Assistant Professor	Sanctioned	--	--	--	--	--	12
	Filled (Regular)	--	01	12	03	08	08
	Filled (Contract)	-	-	-	--	--	--
	Guest Lecturers	01	01	02	02	01	02
Associate Professor	Sanctioned	--	--	--	--	--	--
	Filled (Regular)	--	--	--	--	--	--
	Filled (Contract)	--	--	--	--	--	--
	Guest Lecturers	--	--	--	--	--	--
Professor	Sanctioned	--	--	--	--	--	02
	Filled (Regular)	--	--	--	01	--	01
	Filled (Contract)	--	--	--	--	--	--
	Guest Lecturers	--	--	--	--	--	08
Admin. Staff (all)	Sanctioned	--	--	03	--	02	01
	Filled (Regular)	--	--	--	--	--	--
	Filled (Contract)	--	--	--	--	--	--
Accountant	Sanctioned	--	--	--	--	--	--
	Filled (Regular)	--	--	--	--	--	--
	Filled (Contract)	--	--	--	--	--	--

Data Source: AISHE

(b) Training of faculty and administrative staff between October 1st [previous year] to September 30th [current year]			
	Leadership and management training	Training in the area of academic specialisation	Other training

Assistant Professor	Number trained	NIL	NIL	NIL
	Avg. number of days	NIL	NIL	NIL
Associate Professor	Number trained	NIL	NIL	NIL
	Avg. number of days	NIL	NIL	NIL
Professor	Number trained	NIL	NIL	NIL
	Avg. number of days	NIL	NIL	NIL
Administrative Staff (all)	Number trained	NIL	NIL	NIL
	Avg. number of days	NIL	NIL	NIL
Accountant	Number trained	NIL	NIL	NIL
	Avg. number of days	NIL	NIL	NIL

Data Source: Compiled from training certificates submitted by faculty/administrative staff

(c) Faculty qualifications as on 30 th September, [Current Year]					
		PhD	Postgraduate	Undergraduate	Others
Assistant Professor	Regular	05	07	07	--
	Contract	--	--	--	--
	Guest Lecturers	--	--	--	--
Associate Professor	Regular	--	--	--	--
	Contract	--	--	--	--
	Guest Lecturers	--	--	--	--
Professor	Regular	02	02	02	--
	Contract	--	--	--	--
	Guest Lecturers	--	--	--	--

Data Source: AISHE

4. Student support services

(a) Financial support received (from all sources) by students in the college between October 1 st [previous year] to September 30 th [current year]							
		Undergraduate		Postgraduate		PhD	
		Number	Average Value (Rs.)	Number	Average Value (Rs.)	Number	Average Value (Rs.)
SC	Male	70	6063	06	6063	NIL	NIL
	Female	45	6084	01	6084	NIL	NIL
ST	Male	02	4611	--	--	NIL	NIL
	Female	--	--	--	--	NIL	NIL
General	Male	--	--	--	--	NIL	NIL
	Female	28	5000	--	--	NIL	NIL
Total	Male	72	--	--	--	NIL	NIL
	Female	73	--	--	--	NIL	NIL

Data Source: AISHE

(a) Hostel occupancy as on 30 th September, [Current Year] (all hostels)

	2 nd Division	Result Awaited	Result Awaited	Result Awaited	Result Awaited	Result Awaited	Result Awaited	Result Awaited	Result Awaited	Result Awaited	Result Awaited
	3 rd Division	Result Awaited	Result Awaited	Result Awaited	Result Awaited	Result Awaited	Result Awaited	Result Awaited	Result Awaited	Result Awaited	Result Awaited
3 rd year	Appeared	Result Awaited	Result Awaited	Result Awaited	Result Awaited	Result Awaited	Result Awaited	Result Awaited	Result Awaited	Result Awaited	Result Awaited
	1 st division	Result Awaited	Result Awaited	Result Awaited	Result Awaited	Result Awaited	Result Awaited	Result Awaited	Result Awaited	Result Awaited	Result Awaited
	2 nd Division	Result Awaited	Result Awaited	Result Awaited	Result Awaited	Result Awaited	Result Awaited	Result Awaited	Result Awaited	Result Awaited	Result Awaited
	3 rd Division	Result Awaited	Result Awaited	Result Awaited	Result Awaited	Result Awaited	Result Awaited	Result Awaited	Result Awaited	Result Awaited	Result Awaited

Data Source: AISHE, Examination results declared by [affiliating university/autonomous college]

(a) Examination results for [previous academic year] (postgraduate)											
		SC		ST		Other Reserved Categories		General		Total	
		M	F	M	F	M	F	M	F	M	F
1 st year	Appeared	Result Awaited	Result Awaited	Result Awaited	Result Awaited	Result Awaited	Result Awaited	Result Awaited	Result Awaited	Result Awaited	Result Awaited
	1 st division	Result Awaited	Result Awaited	Result Awaited	Result Awaited	Result Awaited	Result Awaited	Result Awaited	Result Awaited	Result Awaited	Result Awaited
	2 nd Division	Result Awaited	Result Awaited	Result Awaited	Result Awaited	Result Awaited	Result Awaited	Result Awaited	Result Awaited	Result Awaited	Result Awaited
	3 rd Division	Result Awaited	Result Awaited	Result Awaited	Result Awaited	Result Awaited	Result Awaited	Result Awaited	Result Awaited	Result Awaited	Result Awaited
2 nd year	Appeared	Result Awaited	Result Awaited	Result Awaited	Result Awaited	Result Awaited	Result Awaited	Result Awaited	Result Awaited	Result Awaited	Result Awaited
	1 st division	Result Awaited	Result Awaited	Result Awaited	Result Awaited	Result Awaited	Result Awaited	Result Awaited	Result Awaited	Result Awaited	Result Awaited
	2 nd Division	Result Awaited	Result Awaited	Result Awaited	Result Awaited	Result Awaited	Result Awaited	Result Awaited	Result Awaited	Result Awaited	Result Awaited
	3 rd Division	Result Awaited	Result Awaited	Result Awaited	Result Awaited	Result Awaited	Result Awaited	Result Awaited	Result Awaited	Result Awaited	Result Awaited

Data Source: AISHE, Examination results declared by [affiliating university/autonomous college]

6. Placement and student tracking

(a) Placement and Tracking of Students who graduated in [previous academic year] (Undergraduate)		
	Number of students who	Of (*), the number of students who were successfully tracked and are:

		graduated in [the previous academic year] (*)	Employed/ Self-employed	In education/ training	Unemployed	Not in the labour force
SC	Male	NIL	NIL	NIL	NIL	NIL
	Female	NIL	NIL	NIL	NIL	NIL
ST	Male	NIL	NIL	NIL	NIL	NIL
	Female	NIL	NIL	NIL	NIL	NIL
General	Male	NIL	NIL	NIL	NIL	NIL
	Female	NIL	NIL	NIL	NIL	NIL
Total	Male	NIL	NIL	NIL	NIL	NIL
	Female	NIL	NIL	NIL	NIL	NIL

Data Source: Records of the college placement cell

(b) Placement and Tracking of Students who graduated in [previous academic year] (Postgraduate)						
		Number of students who graduated in [the previous academic year] (*)	Of (*), the number of students who were successfully tracked and are:			
			Employed/ Self-employed	In education/ training	Unemployed	Not in the labour force
SC	Male	NIL	NIL	NIL	NIL	NIL
	Female	NIL	NIL	NIL	NIL	NIL
ST	Male	NIL	NIL	NIL	NIL	NIL
	Female	NIL	NIL	NIL	NIL	NIL
General	Male	NIL	NIL	NIL	NIL	NIL
	Female	NIL	NIL	NIL	NIL	NIL
Total	Male	NIL	NIL	NIL	NIL	NIL
	Female	NIL	NIL	NIL	NIL	NIL

Data Source: Records of the college placement cell

7. PhDs Awarded

Number of PhDs awarded between October 1 st [previous year] to September 30 th [current year]	
Discipline Group	Number
Arts	NIL
Commerce	NIL
Criminology and Forensic Science	NIL
Cultural Studies	NIL
Defence Studies	NIL
Design	NIL
Disability Studies	NIL

Education	NIL
Fashion Technology	NIL
Fine Arts	NIL
Fisheries Science	NIL
Foreign Languages	NIL
Gandhian Studies	NIL
Home Science	NIL
Indian Languages	NIL
IT & Computer	NIL
Journalism and Mass Communication	NIL
Law	NIL
Library and Information Science	NIL
Linguistics	NIL
Management	NIL
Marine Science and Oceanography	NIL
Oriental Learning	NIL
Physical Education	NIL
Religious Studies	NIL
Science	NIL
Social Science	NIL
Social Work	NIL
Women Studies	NIL
Literature	NIL
Other	NIL
All disciplines	NIL

Data Source: AISHE

8. Research and consultancy

Revenue generated through externally funded research and consultancies over [previous financial year]		
Discipline Group	Number of active projects	Total Revenue Generated (Rs. lakhs)
Arts	NIL	NIL
Commerce	NIL	NIL
Criminology and Forensic Science	NIL	NIL
Cultural Studies	NIL	NIL

Defence Studies	NIL	NIL
Design	NIL	NIL
Disability Studies	NIL	NIL
Education	NIL	NIL
Fashion Technology	NIL	NIL
Fine Arts	NIL	NIL
Fisheries Science	NIL	NIL
Foreign Languages	NIL	NIL
Gandhian Studies	NIL	NIL
Home Science	NIL	NIL
Indian Languages	NIL	NIL
IT & Computer	NIL	NIL
Journalism and Mass Communication	NIL	NIL
Law	NIL	NIL
Library and Information Science	NIL	NIL
Linguistics	NIL	NIL
Management	NIL	NIL
Marine Science and Oceanography	NIL	NIL
Oriental Learning	NIL	NIL
Others / Inter-disciplinary	NIL	NIL
Physical Education	NIL	NIL
Religious Studies	NIL	NIL
Science	NIL	NIL
Social Science	NIL	NIL
Social Work	NIL	NIL
Veterinary and Animal Sciences	NIL	NIL
Women Studies	NIL	NIL
All disciplines	NIL	NIL

Data Source: College/university records

Number of papers published in peer-reviewed journals between October 1 st [previous year] to September 30 th [current year]			
Discipline Group	Number of papers published		Number of published papers through cross-institute research collaboration
	International Journals	National Journals	
Arts	--	03	NIL
Commerce	02	02	NIL
Criminology and Forensic Science	NIL	NIL	NIL
Cultural Studies	NIL	NIL	NIL

Defence Studies	NIL	NIL	NIL
Design	NIL	NIL	NIL
Disability Studies	NIL	NIL	NIL
Education	NIL	NIL	NIL
Fashion Technology	NIL	NIL	NIL
Fine Arts	NIL	NIL	NIL
Fisheries Science	NIL	NIL	NIL
Foreign Languages	NIL	NIL	NIL
Gandhian Studies	NIL	NIL	NIL
Home Science	NIL	NIL	NIL
Indian Languages	NIL	NIL	NIL
IT & Computer	NIL	NIL	NIL
Journalism and Mass Communication	NIL	NIL	NIL
Law	NIL	NIL	NIL
Library and Information Science	NIL	NIL	NIL
Linguistics	NIL	NIL	NIL
Management	NIL	NIL	NIL
Marine Science and Oceanography	NIL	NIL	NIL
Oriental Learning	NIL	NIL	NIL
Others / Inter-disciplinary	NIL	NIL	NIL
Physical Education	NIL	NIL	NIL
Religious Studies	NIL	NIL	NIL
Science	NIL	NIL	NIL
Social Science	NIL	NIL	NIL
Social Work	NIL	NIL	NIL
Women Studies	NIL	NIL	NIL
All disciplines	NIL	NIL	NIL

Date Source: College records based on published papers submitted by faculty

9. NAAC accreditation and UGC autonomy

	Date of Application (LOI & SSR submitted)	Date on which accreditation was received	Grade	Valid till
1 st Cycle	NIL	NIL	NIL	NIL
2 nd Cycle	NIL	NIL	NIL	NIL
3 rd Cycle	NIL	NIL	NIL	NIL

Date of submission of the Annual Quality Assurance Report for the current year: YES .

Does the college have currently valid UGC autonomy? _____ No _____ . If yes, by order number _____ - _____, dated _____ - _____.

10. Institutional Trends

Variable	Baseline Value	[Year 1]	[Year 2]	[Year 3]	[Year 4]	Current Year
Percentage of sanctioned seats in the 1 st year filled (undergraduate, all categories)	-	80%	NIL	NIL	NIL	80%
Percentage of sanctioned seats in the 1 st year filled (postgraduate, all categories)	-	57%	NIL	NIL	NIL	NIL
Transition rate from the 1 st year to the 2 nd year (undergraduate, all categories)	-	NIL	41%	NIL	NIL	NIL
On-time graduation rate (undergraduate, all categories)	-	NIL	NIL	NIL	NIL	NIL
Transition rate from the 1 st year to the 2 nd year (post graduate, all categories)	-	NIL	72.50 %	NIL	NIL	NIL
On-time graduation rate (postgraduate, all categories)	-	NIL	NIL	NIL	NIL	NIL
Regular faculty in position rate (all levels, reserved categories)	-	NIL	NIL	NIL	NIL	NIL
Regular faculty in position rate (all levels, unreserved categories)	-	NIL	NIL	NIL	NIL	NIL
Percentage of regular faculty with PhDs (all levels)	-	NIL	NIL	NIL	NIL	NIL
Employment rate of graduates from the previous academic year (undergraduate, all categories)	-	NIL	NIL	NIL	NIL	NIL
Employment rate of graduates from the previous academic year (postgraduate, all categories)	-	NIL	NIL	NIL	NIL	NIL
Percentage of total revenue generated through externally funded research	-	NIL	NIL	NIL	NIL	NIL
Number of papers published in peer-reviewed, international journals	-	10	6	3	3	10

Source: Tables under section 1-8.

11. Financial Reports

Name and registration number of the auditor _____ NIL _____.

Number of audit observations recorded by the auditor _____ NIL _____.

Number of audit responses found satisfactory, as certified by the project directorate__ NIL _____.

Certified audit reports as per the standard Chart of Accounts to be attached.

12. All India Survey of Higher Education

Date on which all applicable fields of the Data Collection Format for the All India Survey of Higher Education were completed and submitted _____ 25-02-2016 _____