

Annual Report 2015-16

INTRODUCTION

Name of the College: Mata Jijabai Govt. Girls P.G. College, Moti Tabela, Indore (M.P.)
Name of University: Devi Ahilya Vishva Vidyalaya, Indore (M.P.)
Name of the District: Indore (M.P.)
Is the District an EBD: No

a. Details of UGC recognition:

Under Section	Date, Month & Year
i. 2 (f)	01-07-1961
ii. 12 (B)	31-03-1998

About the College: Mata Jijabai Govt. Girls P.G. College, Moti Tabela, Indore is the lead college of Indore district in M.P. The College predominantly contributes in imparting knowledge to women at a minimal cost. Established in 1952, the college received UGC recognition under 2F in 1961, and UGC recognition under 12 (B) in 1998. The institution received autonomous status in 2001 and is running 22 U.G. and 20 P.G. courses successfully. The college received grade B+ in its first cycle of NAAC accreditation and has recently been accredited grade “B” by NAAC in year 2015.

- Name of the college - Mata Jijabai Govt. Girls P.G. College, Moti Tabela, Indore
Place of the college -
- Name and Contact details(Mail id , Phone) of Principal - Dr. Madhuri Pateriya
- Mobile Number - 9425193427
- Name , Post and Contact details of (mail id, Phone no.) of Reporting In charge –
sourabh Muktibodh, Professor, s_mbodh07@yahoo.com, 9303226881
- Date of report submission -25/12/2017

Part I

1. The Principal's Report

Academic and Administrative Details

The Principal is the Head of the institution and the Financial Head responsible for the financial as well as other aspects of the college administration.

The internal organizational structure can be analyzed separately for **academic and administrative concerns**.

For **academic concerns**, the courses are formulated by the Boards of Studies of the different subjects, then approved by the Academic Council and the teaching planner and technique is decided by the teacher of the course. The quality enhancement committee has also given the privilege of suggesting techniques and practices to improve teaching. The examination and related evaluation is then the responsibility of the Autonomous Cell i.e. the Controller & Assistant Controllers, who in turn are accountable to the examination committee.

For **administrative concerns**, the decisions involve the office sections. The **office administration** in the college, is processed under three major sections, namely, the **establishment** section, the **accounts** section and the **student welfare** section. Though, there are sanctioned posts of Registrar and Head Clerk, there has been no person appointed since 2008-09 (after the previous employees retired). The senior most person in the office has been therefore given the charge as the office head. Since Building concerns are also demanding for this multi faculty college, a separate person for Building proposals and correspondence has been assigned who also takes care of UGC proposals. The College also had a Janbhagidari Samiti (a Govt. plan to bring in resources from agencies outside the college) for which one person from the establishment has been made in-charge, who keeps that account and assists in the meetings.

The student **admission** and undergraduate examination work has been given to a separate office section, which is assisted by various committees of the teachers, namely admission committees, time table committees and examination center superintendent, & Assistant Superintendents.

Research, Consultancy & Extension

- The college has a research committee to monitor research work done by the faculty but by and large, each teacher does independent research and 34 professors are research supervisors for Ph.D. students registered in the University.

- Since the college does not have its independent funds for research, the policy is to encourage students to get the fellowships & work under research guides. Besides, major and minor projects have been sanctioned to teachers in Geography, Home Science (Nutrition), Economics, English.
- Seminars and conferences for such interaction and guest lectures are arranged periodically by each department, especially for the PG students. The Zoology Department & Chemistry Department has a regular Association where one special lecture is presented every year.
- Scholarships are available through State Govt., Rajiv Gandhi Fellowship, ICSSR, and the UGC Fellowship. Since 2011, 21 students have been awarded Rajiv Gandhi scholarship in subjects of Home Science, Sociology, Philosophy, Economics, Political Science, Geography, and Zoology.
- The college is recognized research center for 13 subjects, with 98 new admissions for Ph.D. There are 34 professors as registered guides in the departments declared as research centers i.e. Hindi, English, Urdu, Economics, Sociology, Geography, Political Science, Philosophy, Home Science, Music, Zoology, Botany, and Chemistry. The themes are of different areas and usually, each guide has some fields of expertise which is conveyed through these Ph.D.

2. Overview

VISION:

MJBGGPGC, Moti Tabela, Indore is a college that inspires girls to realise their potential through a unique educational journey built on tradition, innovation, diversity and excellence aimed at enriching our world to provide quality higher education to women, especially those belonging to the socially and economically weaker section of the society at low cost, for their overall personality development and empowerment.

MISSION:

- To develop of self confidence, self reliance, communication skills and economic independence among girls.
- To identify gifted students and help them to develop their full potential by cultivating physical fitness, right interests and attitudes and moral and intellectual values.

- To generate knowledge with essential inputs of resources such as laboratories and modern equipments; thereby creating an ambience conducive to substantial research work.

- (i) Brief introduction of the college (including the status (Govt. / Lead/ Constituent/ Affiliated/ Private), Parent University, UGC recognition, CPE status, etc), location & campus area

LAND DETAILS AND INFRASTRUCTURE FACILITIES

- (i) The college has adequate availability of space with an area of **17.44 acres** of land area, with a built area of **26281.045 sq. m.** This is enough to have adequate spaces for an **Administrative Block, Science Block, Humanities and Home Science Block, and two smaller blocks, Biochemistry Department, and a History Department** (with adjoining rooms for non-govt. Colleges accounts). Apart from these there is a separate Library Block and another block with classroom for Library Science. The non-built areas are playgrounds, garden areas and a space for annual programs with a stage.
- (ii) The administrative block has a total number of **24 rooms**, with 7 rooms for administration, including, **the Principal's Office**, establishment & admissions office, Accounts section, scholarship & UGC proposal division, and an office and an examination cell for the **autonomous body**, as well as 7 departments with 4 adjoining rooms used for PG classes. This block also houses the **Computer and Monitoring Section** of online activities and the functions of a lead college (responsible for collecting and dispersing governmental information of the district to the additional director's office). Moreover, the block has a separate room for **Virtual Classes** (classes conducted for the entire state by the Higher Education Department), and a room for A **Skill Development Course**. A separate room has been given for computer classes run by the Bhoj University, where students can have the facility of PGDCA along with their regular degree courses.
- (iii) Similarly the **Science block** contains 6 departments with **24 rooms** including a computer lab, 3 class rooms, and 6 rooms for departments and 8 labs.(UG & PG labs), and 6 adjoining rooms for classes (PG).
- (iv) The **Humanities block** contains **26 rooms** with the major number of classrooms, with 18 classrooms and 8 departments including the Commerce department. There is also a **separate room for smart classes** (which is used for presentations and for Ph.D. Viva-voce), and a control room for examinations. The

Home Science block adjoining the Humanities block contains the department, 8 rooms, three labs, Nutrition, Human development, and Family Resource Management, 3 classrooms, a computer section, and an NSS room and separate area for career guidance. Separate blocks are available for the Biochemistry lab and classrooms and for History classes. A separate Library Block and two Class Rooms for Library Science and M.Com. are also available.

- (v) The college time table utilizes all the rooms for the five faculties, Arts, Science, Commerce, Home Science and Library Science, from 8 am to 5pm distributed in shifts

(iii) History of the college with significant milestones

The college has travelled from its small beginning as an inter college (1952) to its present status of a multi faculty autonomous college for girls. It got its status of a degree college in 1956 when it was one of three girls colleges in the state. Since then the college has always looked forward covering several milestones. A brief summary is as follows:	
1956	Establishment as a degree college (Principal, Smt.Indu Mehta) with Arts faculty (Political Science, Economics, Hindi Lit. & English Lit.)
1958	Science faculty introduced (with Botany, Chemistry, Zoology, Maths, and Physics)
1961	UGC recognition under 2f received for the college
1963	Shifting of the college from the school building to the college building, Construction of the Science Block
1963	Construction of the hostel for the girls
1967	Beginning of Post-Graduation in Arts
1968	Beginning of Home Science as a separate faculty
1969	Beginning of Post graduate classes in Science
1970-80	Construction of the Home Science Block, Humanities block joined to the Home Science Block
1972	Post graduate classes begun in Home Science faculty
1982	Post graduate classes in most of the Arts & science subjects
1992	Commerce faculty added (undergraduate level)
1998	UGC Recognition under 12 B
2001	Autonomous status provided by UGC
2001	Self-finance courses begun with computer science (B.Sc.)
2002	College was given the responsibility of the lead college of the Indore district
2004	Accreditation by NAAC.. B+ given in Cycle 1
2006	Silver Jubilee celebration of the college, Award given to Capt. Anamika Jain
2007	Self finance courses added - M.Com & M.H.Sc. Nutrition
2007	Biochemistry block was constructed
2008	Semester system was introduced for all courses
2008	Administrative Block constructed (used by the Additional Director)
2009	Review of the Autonomous status, and status given till 2015
2009	Post graduate course in Computer Science was started
2010	Post graduate course in Biochemistry was started
2010	State Award received for Best NSS officer (Bela Sachdeva)

2011	Establishment of the IQAC & planning made for Reaccreditation
2011	State Award received for Best NSS officer (Sushma Sharma)2012
2012	B. Lib. Course added as another faculty
2013	Indira Gandhi National Award2012 received for Best Institution & Best NSS officer (Sushma Sharma) Received on 19 th Nov. 2013
2013-14	NAAC Reaccreditation Process for Cycle 2 was started
2014-15	College started its own research journal “shodh Jigyasa”
2014-15	College received grade “B” by NAAC

(iv) Faculties and major disciplines

Sl. No.	Programme Level	Name of the Programme/ Course	Duration	Entry Qualification	Medium of instruction	Sanctioned/ approved Student intake
1	UG	B.A, B.Sc.B.Com. B. H.Sc. ,B. Lib.	} 3 yrs. 1yr	Class XII UG	Hindi	As given in Higher education specifications
2	PG	M.A., M.Sc.,M.Com., M.H.Sc.	2 yrs.	UG	Hindi & English Mixed	As given in Higher education specifications
3	Integrated Masters	----- -----				
4	M.Phil.	----- -----				
5	Ph.D.	Hindi,Eng.,Urdu, Sociology, Economics,Political Science,Geography, Philosophy, Music Zoology,Botany,Chemistry,Nutrition, Family Res. Management, Human development	Min. 2yrs.	PG with 55% marks & entrance exam.	Option For the student Hindi, English, Urdu	As declared by the University

3. Senior Management Team and Board of Governors

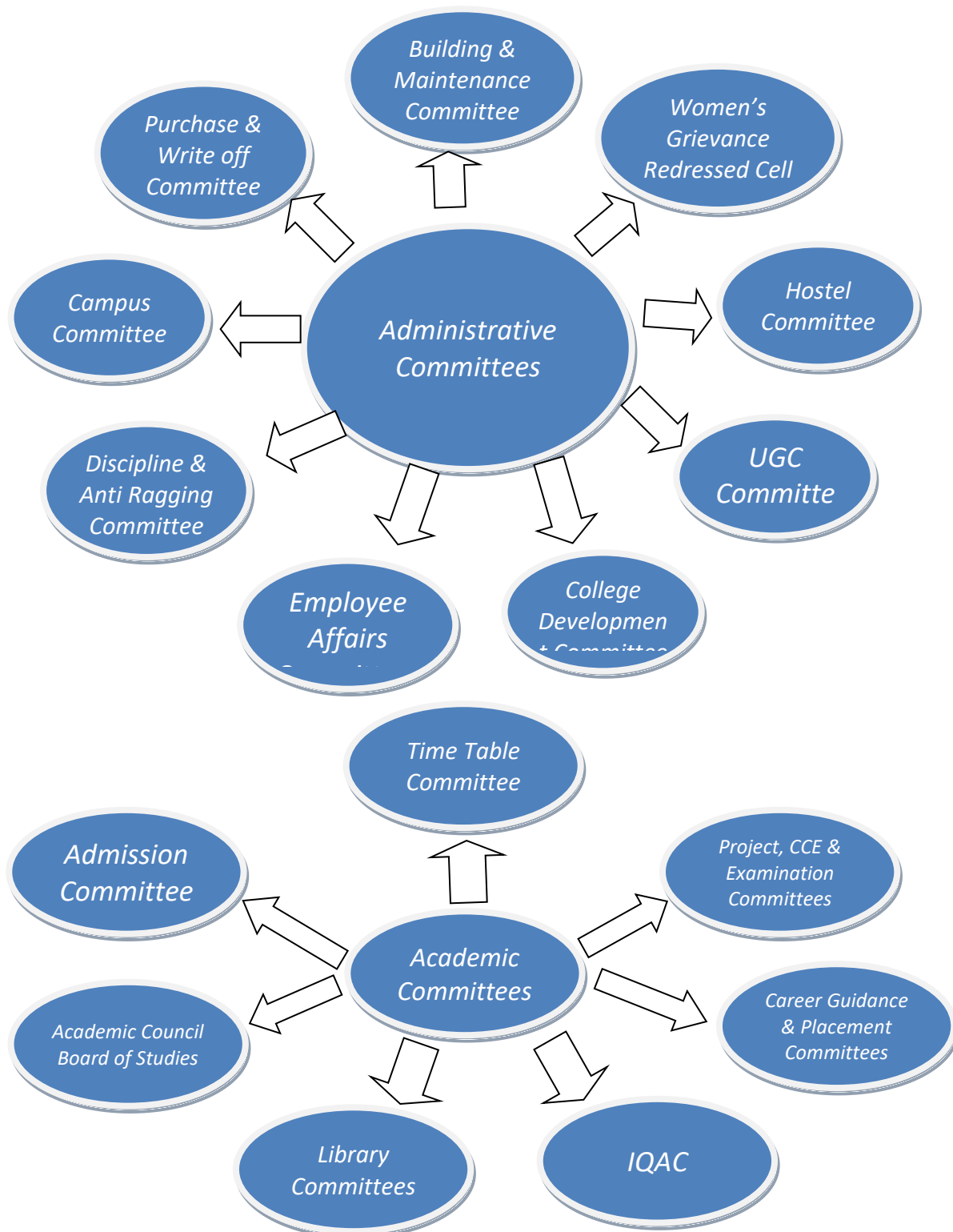
Governance Structure of College

The college ensures the organizational efficiency and its role in quality maintenance through various administrative and academic committees. Most decisions are made through of a democratic approach with discussion and reaching a consensus regarding the issues. The college community has a culture of problem solving through consensus and the heads have the capability of executing most of the plans through their departmental meetings.

The **Principal** is the head of the institution, as established by the higher education department, and he/she is appointed by promotion, through the list of professors with their seniority officially determined. Meetings are held minimally once a month with heads of departments, and with the entire staff periodically where the teachers are encouraged to participate actively and propose new ideas and activities to implement and improve the basic teaching and related processes.

The **committees** are then made by the Principal with the charge of the different duties distributed among the senior teachers. In the present system, the Principal has been making the committees in consultation with the senior teachers who are then expected to carry over the activities through the common participation their committee members. These committees have been elaborated in Annexure I. The committees carry out their functions through meetings and usually have reports submitted at the end of the year or on specific occasions. The Academic Committees are displayed in the following figure –

Similarly Administrative Committees have been displayed in the following figure



Besides, there is a cultural activity Committee including the members conducting the Youth Festival and Music Professor in-charge of the different programs of the college. Similarly, there is a sports committee and scholarship committees related to different kinds of scholarship.

The interaction with the **stakeholders** involves firstly, the parents of the students, and secondly, the **potential employers**. The parents are interacted with through department wise meeting with parents which are however not very frequent. However, parental interactions are attended to by the Principal, & heads as and when they want to present their issues additionally, the hostel Warden attend to issues presented in the context of hostel accommodation.

Regarding potential employers/ industry links the placement officer interacts and arranges for student interviews, and generally communicates the potential employers' intentions. Additionally, certain departments have established contacts for internship projects as part of the final semester of each batch of students.

Reinforcing a culture of **excellence** is the key idea behind the quality enhancement movement of the higher education department and the college level management

- firstly, a quality enhancement cell has been established in the college
- The Academic council and the Boards of studies have their regular meetings to ensure quality of the syllabi as well as other educational activities like seminars, workshops and teaching methodology.
- The examination system is reviewed each year, with improvements suggested as and when required by the examination committee of the autonomous cell of the college.
- A seminar and related discussions have been done regarding best practices and the continuous evaluation during semesters for all the teachers during last year.

Identification of needs is done through a basic process of inviting proposals or written requests which are sent to appropriate agencies like the PWD for construction, repairs etc., to the University, if related to courses or examinations.

The process of organizational development is carried out firstly, with the help of higher education training programs. Many teachers have been nominated and sent for these programs.

Secondly, each committee has an in-charge professor who learns to co-ordinate the related activities which again is the best training for managing the activity relevant to the

committee's responsibilities. Besides, the teachers are encouraged to attend workshops, seminars and short term training courses conducted by the University or other institutes.

4. Admission Statistics

- The number of applicants at the UG and PG level who ranked the college as their 1st, 2nd and 3rd preference, the number of applications received for PhD courses.

Applications	UG	PG	PhD
Applications that ranked the college as the 1 st preference	1210	840	NA
Applications that ranked the college as the 2 nd preference	560	212	
Applications that ranked the college as the 3 rd preference	348	102	
Total number of applications received	3422	1610	
Number of students admitted	1914	780	

Data Source: E-pravesh portal, records of the affiliating university

A brief demographic profile of students 2015-16

Name of the Course	SEMESTER	Category						Total	Gender	% of students from the State	% of students from other states
		GEN	SC	ST	OBC	P.H.	MINORITIES				
B.A.	I	55	59	192	65	6	125	371	Female	96	4
B.A.	III	53	51	165	43	7	25	312	Female	96	4
B.A.	V	32	39	91	46	9	40	208	Female	96	4
M.A.	P	36	18	85	32	7	41	181	Female	96	4
M.A.	F	23	14	61	30	2	34	162	Female	96	4
Total		199	181	594	216	31	265	1234			
B.SC.	I	215	118	278	232	0	254	843	Female	96	4
	III	165	108	261	197	2	209	731	Female	96	4
	V	167	97	167	162	0	255	593	Female	96	4
M.Sc.	P	47	28	50	62	0	31	187	Female	96	4
	F	41	15	44	39	0	21	117	Female	96	4
Total		635	366	800	692	2	770	2471			
B.COM.	I	203	157	60	238	1	254	658	Female	96	4
	III	147	164	61	217	1	289	589	Female	96	4
	V	227	136	54	197	1	293	614	Female	96	4
M.com.	P	18	12	6	23	1	11	59	Female	96	4
	F	21	11	13	15	0	9	60	Female	96	4
Total		616	480	194	690	4	856	1980			
G.Total		1450	1027	1588	1598	37	1891	5685			

5. Academic Programs: Core Programs - UG & PG

Core programs at UG level

Stream	Name of the Core Program	Eligibility	Optional subjects
Arts	Bachelor of Arts	10+2 from a recognized Board OR 10+2 with relevant vocational course from M.P. Board	Foundation course + a group of 3 optional subjects
Science	Bachelor of Science	10+2 from a recognized Board OR 10+2 with relevant vocational course from M.P. Board	Foundation course + a group of 3 optional subjects
Home Science	Bachelor of Home Science	10+2 from a recognized Board OR 10+2 with relevant vocational course from M.P. Board	Foundation course + a group of 3 optional subjects
Commerce	Bachelor of Commerce	10+2 from a recognized Board OR 10+2 with relevant vocational course from M.P. Board	Foundation course + a group of 3 optional subjects

Core Options at PG level

Faculty	Name of the Core Program	Eligibility	Subject Options
Arts	Master of Arts	3 year Degree course in any faculty/ Honours degree course in same subject	10 viz. Economics, English, Geography, Hindi Lit., Music Inst., Music Vocal, Philosophy, Political Science, Sociology, Urdu Lit.
Science	Master of Science	3 year Degree course in any faculty/ Honours degree course in same subject	06 viz. Botany, Biochemistry, Chemistry, Computer Science, Physics, Zoology
Home Science	Master of Home Science	3 year Degree course in any faculty/ Honours degree course	03 viz. Human Development, Family

		in same subject	Resource Management, Food and Nutrition
Commerce	Master of Commerce	3 year Degree course in any faculty/ Honours degree course in same subject	01

M.Phil - None

Ph.D. Programs

S.no.	Subject	Eligibility	No. of scholars registered
1	Economics	Masters degree in related subject	02
2	English Literature	Masters degree in related subject	09
3	Geography	Masters degree in related subject	03
6	Philosophy	Masters degree in related subject	04
7	Political Science	Masters degree in related subject	02
8	Sociology	Masters degree in related subject	02
9	Urdu Literature	Masters degree in related subject	09
13	Zoology	Masters degree in related subject	03
14	Home Science	Masters degree in related subject	01

Self-financed courses-

Name of the Course	Department	Duration	Fees	Seats
B.Sc.	Computer Science	3 Years	8160	120
B.Sc.	Biochemistry	3 Years	6160	60
B.Sc.	Pharmaceutical Chemistry	3 Years	6160	60
B.Com.	Computer Application	3 Years	6160	120
B.Com.	Tax Procedure	3 Years	4660	60
M.Sc	Computer Science	2 Years	17914	30
M.Sc.	Biochemistry	2 Years	8914	20
M.H.Sc.	Food and Nutrition	2 Years	7114	50

Academic Calendar 2016

Academic Work	First/ Third/ Fifth Semester	Second/ Fourth/ Sixth Semester
Orientation Classes/Zero Classes/SWOT analysis	01 Jul to 13 Jul 2016 (10 Working Days)	02 Jan 2017 (01 Working Day)
Teaching and Continuous Comprehensive Evaluation	14 Jul to 07 Nov. 2016 (90 Working Days)	03 Jan to 25 April 2017 (90 Working Days)
CCE Schedule	Sept. Fourth Week	March Second Week
Preparation Leave	08 Nov to 14 Nov 2016	26 Apr to 27 Apr 2017 (Total Two Days)
Practical Exams (Graduation/Post Graduation)	15 Oct. To 07 Nov. 2016	25 Mar to 25 Apr. 2017
Semester and ATKT Exams	15 Nov. To 21 Dec. 216	28 Apr to 26 May 2016
Declaration of Examination Results	Till 31 Dec 2016	Till 15 June 2017
Semester Break (for students)	22 Dec. To 31 Dec 2016 (10 Days)	27 May to 30 June 2017 (35 days)
Semester Break (for teachers)	22 Dec to 31 Dec 2016 (10 Days)	27 May tp 15 June 2017 (20 Days)

6. The Student Experience

Facilities available -

1. Infrastructure -

S.No	Existing facility	Rooms	Vision-2020	Vision-2025
	Administrative Block 1. the Principal's Office, 2. establishment & admissions office, 3. Accounts section, scholarship & UGC proposal division, 4. examination cell for the autonomous cell 4. 7 departments 5. 4 adjoining rooms	24	1. separate block for autonomous dept. and examination cell	Purely separate block for autonomous cell, IQAC cell, RUSA cell, placement cell, examination center, registrar, office and principal office, renovated and furnished.

	used for PG classes. 6. Computer and Monitoring Section 7. Virtual Classes 8. Skill Development 9. PGDCA 1 room			
2	Science Block 1. Chemistry 2. Physics 3. Zoology 4. Botany 5. Computer Sc. 6. Math	26	Needs expansion, one proposed under RUSA	With the realization of new science subjects, more space will be required. Vertical growth will be possible
3	Humanities Block	26	Needs more classrooms and fairly good arrangement for respective dept.	-
4	Home science block	8		
5	Biochemistry Department	4	-	-
6	History Department	2	-	-
7	Library	2	Needs more expansion	Space for about 1000 students for studies with proper furniture and computers.
8	Furniture	Available for about 3500 students	Has to be purchased as per needs. RUSA grants may be availed.	According to strength
9	Computers	120		
10	Wi Fi facility	yes	Un-interrupted high speed Wi-Fi protected by passwords.	same
11	CC TV/ camera	22	More cameras	same
12	Laboratories 1. Chemistry 2. Physics 3. Botany 4. Zoology 5. Bio chemistry 6. Computer science 7. Home science	5 2 3 2 1 1 3	1. Most of laboratories needs renovation. 2. Centralized research lab is required. (May be constructed under RUSA grants.	1. Centralized research lab with all modern instrumentation and facilities. Class of its own. 2. More labs as per

			3. Capacity building for all labs. 4. Language lab has been proposed under RUSA	requirement, both for UG and PG students.
13	Parking	Yes, ample space available	To be developed systematically in the available space	More space will be required. This looks difficult as space is limited. Additional space will be required.
14	Interactive boards	4	12	25
15	Virtual Class rooms	1	At least 3 such rooms will be required.	5
16	Conference hall/ Multiple utility hall and Extension of Science Block	Under Constructio n		
17	Projectors (LCD)	12	20	30
18	Science and Humanity block	It is proposed that UG and PG in microbiology, biotech, pharma chem. and P.G in mathematics should be started during next 10 years. A separate P.G. block is required in which there must be well equipped Botany, Zoology, physics, chemistry, microbiology and biotechnology labs, along with lecture theaters should be constructed in the same block. Provisions for a mini-conference hall should be made with a capacity of 100 to 150 seats equipped with audio-visual facilities. Similarly, a separate P.G. humanity block be constructed, having a conference hall of capacity of 200 to 250 seats, equipped with audio-visual facility.		
19	Auditorium	To meet the demands of the projected strength in 2025, an auditorium with a capacity of at least 2500 seats will be required. Note- for the projected infrastructure the college beers ample space.		
20	Solar panel and water harvesting system	Extensive efforts in this direction will be required.		
21				

2. Hostels-

Existing Capacity of the hostels and occupancy

There is a Girls Hostel with a 48 Rooms having capacity for 190 girls and an adjoining block for SC/ST students (under the administration of the Tribal Welfare department). All the rooms are occupied and there is so much of demand that a room for

accommodating 8 girls is made available when no space is left. A proposal for another hostel has been sent to UGC for the next session.

The students make use of the college gymnasium which is in the campus, and yoga & other classes are made available occasionally. There is a reading room facility with magazines, and a hall with television for the students to use collectively. The mess for meals is run with the help of the student committees and 10 servant staff under the monitoring of the Warden.

S.No	Hostel facility	Existing	Target 2020	Target 2025
1	Rooms	48	100 (2 units)	5 units
2	strength	191	600	1200
3	Mess	1	2-3	3-5
4	Reading room	1	2-3	3-5
3	Water-filtration unit	02	04	08
4	T.V.set	02	04	08
5	Solar geyser	no	yes	yes
6	Wi-Fi	no	yes	yes
7	Servant staff	10	25	50
8	dispensary	no	yes	yes
9	CC TV/ camera	no	yes	yes
10	Water harvesting system	yes	yes	yes
11	Demand ratio	for70 seats/200candidates	higher	higher
		Recently college has received UGC grant of Rs. 80.00 lakh for constructing a new girls hostel, this is under process.(under 12 th plan)		

3. Gardens -

S.No.			
1	No. of gardens and approximate area	total4, botanical garden area 53m*34.5m	No space for expansion. Plant diversity and maintenance may be taken care of.
2	No. of botanical gardens	01	02, green house,glass house,poly house construction, sprinklers, drop irrigate facility
3	No. of trees	1100	2000

4	No. of gardeners	01, temporary	At least 8 permanent gardeners
5		1. Boundary wall for present botanical garden. 2. Development of two or more gardens 3. Diversity of plants. 4. Provision for maintenance of aquatic plants.	

4. Sports-

S.No.	Sports facility	Existing	Target 2020	Target 2025
1	No. of Grounds	4		
2	Outdoor sports	6	8	10
3	Indoor Sports	7	10	10
4	Gym and facilities	4	8	12
5	Students selected at distt. level	150	250	500
6	Students selected at state level	100	250	500
7	Students selected at University level	12	25	50
8	Expertise	1. Cricket 2. taekwondo		1. Cricket 2. Taekwondo 3. Basket ball 4. Athletics 5. Badminton 6. Swimming 7. judo
9	Sports to be elevated in coming years			
10	Swimming pool	nil	-	1
11	Future plans For described facilities -about 3-4 crore Rs. Will be required. Govt schemes may help it.			1. Athletic/ synthetic court 2. Basketball cement court. 3. multipurpose hall Swimming pool

- Library as a learning resource- advisory committee, its composition, facilities & services (e & print), annual improvement initiatives

Library- Basic information

Library content	Present	Year2020	Year 2025
Print Books	84945	110000	150000
Non print	400 Back Vol.200 thesis		
Electronics	Through N- list	More such options	More such options
Journals and e- journals	25	35	50
Photocopier	1	2	5
Library automation	Partial	partial	complete
Total number of computers for public access.	03	10	20
Total numbers of printers for public access.	01	03	5
Internet band width speed	02 mbps	At least 2 mbps	Prevailing width, may be 8 mbps or more
	Total renovation of library building with self-study hall for 500 students and study chamber for faculty members.		

Library gets budget for purchasing new books form UGC, Govt. schemes, Autonomous fund, Self-finance, Janbhagidari fund & Book-Bank Scheme for SC/St Students.

- Student support services:
 - ✓ IT enabled services
 - Wi-Fi Campus
 - Smart Class Rooms
 - Virtual Class Room
 - Free Smart Mobile Phone Distribution
 - CCTV camera
 - Biometric Attendance System for Staff
 - Two Computer Labs – 101 Computers
 - LCD Projectors - 08

- ✓ Financial assistance (scholarships/ schemes for SC/ST/OBC/ minority, Group & Health Insurance Schemes)

Existing Govt. funded scholarship-schemes

S.No.	Name of the scheme	Purpose
1	Post-matric for SC/ ST/ OBC	Educational provisions
2	Pratibha kiran	Assistance for urban girls securing above 60%
3	Gaon ki Beti	Assistance for girls residing in villages
4	Avas sahayata(for SC/ST)	For girls out of city residing in rented rooms.
5	Avagaman	Transport assistance for girls
6	Scholarship for minorities/ shramik	Educational provisions
7	Merit Scholarship	For Meritorious students
8	Central Sector Scholarship	Merit Scholarship by Central Govt.

- ✓ Personal enhancement & development schemes- NCC, NSS, Facilities for physically challenged & slow learners; Tutor-Guardian Scheme, Grievance Redressal Cell, Entrepreneurship Cell, Remedial classes, Career Guidance Cell.

NSS and Extension Activities

S.No.	Activity	Date
1	International Yoga day Group yoga	21-06-15
2	Human Chain for Blood donation	28-06-15
3	Plantation by Speaker Honourable Mrs. Sumitra Mahajan	10-07-15
4	Plantation on Guru Purnima	31-07-15
5	Nukkad Natak on Breast Feeding followed by lecture	4-8-15
6	International Youth day – Lecture by Dr. Anit Johsi	12-08-15
7	Poster Making Competition on AIDS	13-08-15
8	Oath on Communal Harmony	20-08-15
9	Women Empowerment and Sexual Harassment – Speech by Dr. Manjula Tiwari and Anjali Khatri	27-08-15
10	Breast Cancer- Lecture by Dr. Seema Vijaywargiya	18-09-16
11	Haemoglobin Examination of 126 Students by Rotary Club Central	19-09-15
12	Osteoporosis Examination of about 110 professor by Rotary Interwheel	15-10-15
13	Samuhik Surya Namaskar	12-01-16
14	Distribution of Polio Drops in slums	17-01-16
15	7 day Camp at Gram Bhicholi Mardana Indore participation of 100 students	26-02-16 to 03-06-16
16	Rs. 31205/- donated to CM Welfare Fund for	10-06-15

	Nepal Earthquake Sufferers Rs. 1625 donated for handicapped welfare association	24-09-15
	Rs. 2500 donated for communal harmony via harmony flag	04-12-15
	Rs. 6100 donated for Armed Military Forces to collector welfare fund	22-01-16

- ✓ Extracurricular activities: Calendar of activities (Sports, Youth Festival, cultural and literary events), Achievements, Awards

a- Youth Festival 2015

S. No.	Activities	Participants	Position
1	Patriotic Group Song	Dhanshree Halve Yashi Rathore Hema Machhiya Kanchan Oghate Riya Jain Poorva Kavthekar	Prize Second Inter-University Level
2	Classical Singing (Solo)	Poorva Kavthekar	Prize Second Inter-University Level
3	Bhartiya Sugam Sangeet	Poorva Kavthekar	First Prize Inter-University Level
4	Debate	Prerna Mahadik Tabassum Qureshi	-
5	Speech	Prerna Mahadik	-
6	Rangoli Competition	Shrashti Devangan	-
7	Classical Dance (Solo)	Devleena Sarkar	-

b- Sports

S. No.	Sports Activities	District Level	State Level	University/National
1	Hockey	18	05	05
2	Football	10	05	05
3	Cricket	16	04	04
4	Judo	08	02	02
5	Wrestling	07	02	02
6	Handball	08	02	02

7	Kabaddi	12	01	01
8	Gymnastic	03	01	01
9	SoftBall	04	02	02
10	Kho-Kho	12	01	01
11	Basketball	12	0	0
12	Weight Lifting	02	00	00
13	Taikwando	08	0	0
14	Yoga	06	0	0
15	Athletics	10	0	0
16	Lawn Tennis	02	0	0
17	Shooting	02	0	0
18	Swimming	12	0	0
19	Cross Country	06	0	0

7. Student Achievements

Highlights the most significant academic and non-academic achievements of students over the past year. This can include major academic awards and scholarships received student research, and sports and other extracurricular activities.

ACADEMIC

- Merit

S.no	Name of the award/ medal/ meritorious scholarship	Name of the recipient	Class	Area of achievement
1	University Merit	Ku. Pallavi Joshi	BA	Academic
2	University Merit	Ku. Xswachi Joshi	BA	Academic

CULTURAL

• Participation

S.no	Name of the event	District Level	State Level	University	National Level
1	Group Song	06	-	-	-
2	Classical Music	1	-	-	-
3	Sugam Sangeet	1	-	-	-
4	Debate	2	-	-	-
5	Elocution	1	-	-	-
6	Classical Dance	1	-	-	-
7	Group Dance	8	-	-	-
8	Rangoli	1	-	-	-

• Awards and Achievements

S.no	Name of the award	Name of the recipient	Class	Area of achievement
1	Indira Gandhi National Award	Ku. Girishma Trivedi	M.Sc.	NSS Best Volunteer

S. No.	Activities	Participants	Position
1	Patriotic Group Song	Dhanshree Halve Yashi Rathore Hema Machhiya Kanchan Oghate Riya Jain Poorva Kavthekar	Prize Second Inter-University Level
2	Classical Singing (Solo)	Poorva Kavthekar	Prize Second Inter-University Level
3	Bhartiya Sugam Sangeet	Poorva Kavthekar	First Prize Inter-University Level
4	Debate	Prerna Mahadik Tabassum Qureshi	-
5	Speech	Prerna Mahadik	-
6	Rangoli Competition	Shrashti Devangan	-
7	Classical Dance (Solo)	Devleena Sarkar	-

SPORTS

- **Participation**

S. No.	Sports Activities	District Level	State Level	University/National
1	Hockey	18	05	05
2	Football	10	05	05
3	Cricket	16	04	04
4	Judo	08	02	02
5	Wrestling	07	02	02
6	Handball	08	02	02
7	Kabaddi	12	01	01
8	Gymnastic	03	01	01
9	SoftBall	04	02	02
10	Kho-Kho	12	01	01
11	Basketball	12	0	0
12	Weight Lifting	02	00	00
13	Taikwando	08	0	0
14	Yoga	06	0	0
15	Athletics	10	0	0
16	Lawn Tennis	02	0	0
17	Shooting	02	0	0
18	Swimming	12	0	0
19	Cross Country	06	0	0

- **Awards and Achievements**

Name of the student	Class	Sport	Award/Achievement
Ayushi Shukla	B.Sc. I	Wrestling	I position State level

Pooja Yadav	BSc III	Wrestling	II Position state level
Anita Jaiswal	MA II	Weight Lifting	I position Divisional Level
Akanksha Yadav	BCom	Weight Lifting	II position Divisional Level
Ritu Pathak	BSc I	Wrestling	II position Divisional Level
Anjali Dagar	BCom I	Wrestling	II position Divisional Level
Rani Karagwal	BA I	Wrestling	II position Divisional Level
Reena Chouhan	BA III	Judo	I Position State Level
Akanksha Yadav	BCom	Judo	I Position State Level
Pooja Yadav	BSc III	Judo	II Position Divisional Level
Piky Sharma	BA III	Judo	II Position Divisional Level
Divya Vaishnav	BCom I	Judo	II Position Divisional Level
Prachi BAiragi	BA III	Judo	II Position Divisional Level
Rani Karagwal	BA I	Judo	II Position Divisional Level
Maya Khaikhar	BCom III	Atheletics	III Position Divisional Level
Shivangi Bilwal	B.Sc. I	Lawn Tennis	III Position Divisional Level
Kajal Parmar	BCom III	Swimming	III Position Divisional Level
Preeti Upadhyay	BA III	Shooting	III Position Divisional Level
Asha Mansare	MA I	Chess	IV Position Divisional Level
Arti Purohit	BA III	Gymnastics	I Position Divisional Level
Arti Purohit	BA III	Taikwando	II Position Divisional Level
Anita Jaiswal	MA II	Taikwando	II Position Divisional Level

8. Research Activities (4 pages)

Identifies major research themes, places these themes in their social and economic context, highlights major research achievements (publications, collaborations, intellectual property produced, external funding received etc.), and profiles top researchers. Lays out the research agenda and identifies themes for the coming year.

- **Major research themes**

S. No.	Department	Prioritized research area and expertise	Social/ economic context
--------	------------	---	--------------------------

S. No.	Department	Prioritized research area and expertise	Social/ economic context
	Economics	Global investor summit , market education and health,	both
	Geography	Agriculture Geography, Urban Geography, Economics of Geography, Environmental Gegraphy	both
	Political Science	Panchayatiraj and Political Awareness	both
	Philosophy	Recent philosophical theories, Yoga	both
	Sociology	Recent social dynamics, modern social behavioral patterns	both
	English	Common wealth literature, Black Literature	both
	Hindi	Samkaleen hindi Sahitya,	both
	Home Science	Food and Nutrition, Dietitians	both
	Music	Classical forms of Music	both
	Physics	-	both
	Chemistry	Green Chemistry	both
	Botany	Environmental Science,	both
	Zoology	Fisheries	both

- **Major/Minor research projects**

S. No	Name of the Faculty	Year	Title of the project	Name of funding Agency/ Industry	Total grant received
1	Dr. Jyoti Sharma	2015-17	Unorganized employment	UGC CRO Bhopal	125000/
2	Dr. Manisha Sharma	2015-17	Performartive in the theatrical world	UGC CRO Bhopal	150000

3	Dr. Mamta Pathrade	2015-17	Paleocological study of cephalopode of Dhar District	UGC CRO Bhopal	140000/-
4	Dr. Amrita Khatri	2015-17	Study of Bivalves of Dhar District	UGC CRO Bhopal	150000

• **Papers presented in regional, national and international seminars/ conferences**

S. No.	Name of the faculty	Regional/ State	National	International
1	Dr. Kiran Saluja	01	01	
2	Dr. Chandrakanta Bhatt	01	01	
3	Dr. Mamta Chandrashekhar	01	08	03
4	Dr. Trapti Joshi	01	04	02
5	Dr. Amitabh Shrivastav	00	07	00
6	Dr. Veena Atre	02	02	00
7	Dr. Abhaya Dayma	01	01	00
8	Dr. Bholeshwar Dube	00	01	00
9	Dr. Pushpa Jain	00	05	00
10	Dr. Usha Masih	00	06 seminars 03 Workshops	01
11	Dr. Saroj Mahajan	00	07 Seminars 05 Workshops	01 seminar, 01 workshop
12	Dr. Alka Bajpai	00	02	
13	Dr. Anita Gangrade		05 Workshops 03 Seminar	01 Workshop, 01 conference
14	Dr. Kushal Jain	00	05	00
15	Dr. Abha Holkar	00	05	00
16	Dr. Sourabh Muktibodh	00	02	00

• **Publications in national/ international journals**

S. No.	Name of the faculty	Name of the journal	Title of the paper	ISSN/ ISBN number /Impact factor
--------	---------------------	---------------------	--------------------	----------------------------------

1	Dr. Vandna Agnihotri	Sanskriti Samrasta aur Bhartiya Sahitya	Sanskriti aur samrasta ka kavya – Ram ki shakti pooja	978817677294-1
		Shodj Jigyasa	Nirmal Verma ke pramukh chintan bindu	2395-5902
		Shabd Bramha	Samkaleen kahaniyo me grameen samaj ki jhalak	2320-0871
2	Dr Chanda Talera	Sanskriti Samrasta aur Bhartiya Sahitya	Bhartiya sanskriti aur naari swantantray	978817677294-1
		Shodj Jigyasa	Vivekiray ke vyangya nibandho me chintan sarokar	2395-5902
		Naveen shodh sansaar	pravasi sahitykar sunita jain ke upanyas me naari ek anusheelan	2320-8767
3	Dr. Jaishree Bhatnagar	Shodh Jigyasa	Shailesh Matiyani ke upanyas ek parichay	2395-5902
		Naveen shodh sansaar	Bal geeto me baalman ki abhivyaktiya	2320-8767
		Naveen Shodh Sansaar	Nayika pradhaan mahakavya Yashodhara	2320-8767
		Sanskriti Samrasta aur Bhartiya Sahitya	Balkand me bhakti aur darshan	978817677294-1
		Naveen shodh sansaar	Ramcharit Manas me goud naari patra, samanya parichay	2320-8767
4	Dr. Pratibha Solanki	Shodh Jigyasa	Hindi ka e-sahitya lekhan – dasha aur disha	2395-5902
		Shodh Jigyasa	Mahila sashaktikaran me hindi sahitya ki bhumika	2395-5902
		Shabd Bramha	Malvi Kavya sahitya me grameen jeevan	2320-0871
		Sanskriti Samrasta aur Bhartiya Sahitya	Samajik samrasta ka samvahak – hindi sahitya	978817677294-1
5	Dr. Shabnam Khan	Shodh Jigyasa	Adikaal me Ram Kavya ki chetna	2395-5902
		Divya Shodh Sameeksha	Anuvaad aur anuvadak	2394-3807
		Naveen Shodh Sansaar	Bhaktikaleen ram kavya ki parampara	2320-8767
		Divya Shodh Sameeksha	Prasad aur unki Bimb yojna	2394-3807
		Sanskriti Samrasta aur Bhartiya Sahitya	Bhartiya sahitya – Bhartiya sanskriti evam samkaleen hindi upanyaas	978817677294-1
		Shabd Bramha	Premchand ke katha sahitya me grameen jeevan	2320-0871
6	Dr. Rasheeda	Naveen shodh	Adad hamad ka sandesh	2320-8767

	Khan	sansaar	vahak – ek nazar	
		Shodh Jigyasa	Raghuveer sahay ke kavya me samajik jagrukta	2395-5902
		A Journal of Asia for democracy and development	Paryavaraniya rasayan ek anusheelan	0973-3833
		Shabd Bramha	Premchand ki kahaniyo me grameen samaj ki jhalak	2320-0871
		Sanskрати Samrasta aur Bhartiya Sahitya	Kabeer ke kavya me samrasta ke vividh aayam	978817677294-1
7	Dr. Kushal Jain	Naveen shodh sansaar	Value base education	2320-8767
		Shodh Jigyasa	Higher education and gender discrimination and their impact on employment opportunity	2395-5902
		Shodh Jigyasa	Online shopping and consumer behaviour in digital era	2395-5902
		Shodh Jigyasa	Socio Economic impact of pradhan mantra gram sadak yojna	2395-5902
8	Dr. Sourabh Muktibodh	Shodh Jigyasa	Effect of solvent polarity on carrier facilitated transport of alkali and alkaline earth metal ions using non-cyclic oxo-crown ethers	2395-5902
		Shodh Jigyasa	Transport of alkali and alkaline earth metal ions across polymer inclusion membrane using synthesized non-cyclic oxo-crown ethers.	2395-5902
		Journal of Chem. And Pharm. Rs. (JCPR)	A comparative study of Phenol and o-Cresol by Chloramine- T; A kinetic approach	
		International journal of science and research	Study of reactivities of some non-cyclic oxo-crown ether with alkali and alkaline earth metal ions in solid state	
		International journal of science and research	Systematic transport investigation on alkali and alkaline earth metal ions using selected linear oxo-crown ethers across organic liquid membrane	
9	Dr. Saroj	Research Link	Study of aquatic	0973-16208

	Mahajan		biodiversity of Sirpur talab of dhar road indore a survey report	
		International journal of advances in engineering and technology	Phythomonitoring of atmospheric pollution in road side perennial trees of indore city	22311963-G
		International journal of advances in engineering and technology	Effect of environmental pollution on road side plants in indore city	2348-7550
		International journal of advances in engineering and technology	A Comparative study of various fruits as potential source of lycopene and their medicinal properties	2348-7550
		Shodh Jigyasa	Enumeration and documentation of medicinal plants from college campus kila bhavan indore	2395-5902
		International journal of research – Granthalayah social issues and environmental problems	Biological monitoring of road side plant (Mangifera Indica) exposed to vehiclular pollution in indore city with special reference to MLB college kila bhawan indore	
10	Prof. Anita Gangrade	Shodh Jigyasa	Enumeration and documentation of medicinal plants from college campus kila bhavan indore	2395-5902
		Special issue of research journal Gyan Ganga	Impact of climate change on plant and their control by tree plantation	23954442
		Special issue of research journal Gyan Ganga	Study of dust deposition on leaves of road side plants due to vehicular air pollution in indore city	23954442
		Special issue of research journal Gyan Ganga	Effect of climate change on floral biodiversity at Industrial area in Indore	23954442
11	Dr. Ashutosh Dubey	Contemporary Discourse	The thematic web in Girish Karnad's Bali: The Sacrifice	0976-3686
		Shodh Jigyasa	The play as memory: Tennessee William's ' The Glass Managerie'	2395-5902
		Shodh Jigyasa	Spouse as Stranger in A Doll's House	2395-5902

		Shodh Jigyasa	Society as a self-replicating ensemble in Evam Indrajit	2395-5902
		Poet Crit XXIX Jan 2016	Images of Women Exile	0970-2830
		Shodh Jigyasa	Sin, Suffering and salvation in The Rime of the Ancient Mariner	2395-5902
		International Journal of Multicultural literature	Anne Tayler's 'Saint Maybe' an epitome of sibling compassion and squabbles	2231- 6248
12	Dr. Manisha Sharma (Pandey)	Shodh Jigyasa	Exploitation: A dominant theme in J.M. Coetzee's disgrace	2395-5902
		Shodh Jigyasa	Aesthetics in Indian English Drama	2395-5902
13	Dr. Ashok Sachdeva	Shodh Jigyasa	"Rubaiyat of Omar Khayyam"	2395-5902
14	Ms. Vandana Mishra	Shodh Jigyasa	"The last Mughal: The fall of synasty Delhi 1857- A Review"	2395-5902
15	Dr. Kiranbala Saluja	Shodh Jigyasa	Shri Guru Granth Sahib ki vaaniyo me samajik samrasta	2395-5902
16	Dr. Chandrakanta Bhatt	Jeevan Koushal	Atmvikas me shiksha ka mahatva	819219657-7
17	Dr. Trapti Johsi	Jeevan Koushal	Jeevan Koushal	819219657-7
		Shodh Jigyasa	Nirvachan abhiyan ke vaicharik evam manovaigyanik aadhar	2395-5902
		Shodh Jigyasa	Sanchar sansadhan ka pramukh madhyam samachar patra	2395-5902
		The international journal of research grandthalay	Paryavaran pradushan manav swasthya – ek vishwavyapi samasya	23943629
18	Dr. Abhay Dayma	Jeevan Koushal	Atmvikas me shiksha ka mahatva	819219657-7
		Shodh Jigyasa	Lok Seva gurantee adhiniyam 2010 – ek sameeksha	2395-5902
19	Dr. Amitabh Shrivastav	Shodh Jigyasa	Bahuayami sanchar madhyamo ki rashtriya hit me bhumika	2395-5902
20	Dr. Veena Atre	International Research journal of social science	Kendra me gathbandhan sarkaro ka itihaas bhartiya rajeeti ke sandarbh me	2320-4702
		Shodh Jigyasa	Bharat ki hinsak chunavi	2395-5902

			rajneeti aur chunav sudhaar ki avashyakta (16vi loksabha ke sandarbh me)	
		The International journal of research grandhalaya	Paryavaran pradushan ka manav swasthya par badhta dushprabhav ek adhyayan	2350-0530
		Shodh Jigyasa	Mahila sarpancho ki samajik bhagidari ka tehsil anusaar tulnatmak vishleshanatmak adhyayan (indore jile ke pratham evam dwitiya panchayat chunav ke sandarbh me)	2395-5902
21	Dr. Saroj Billore	Shodh Jigyasa	Suchna ka adhikaar adhiniyam 2005(vartmaan chunotiyo ke sandarbh me)	2395-5902
22	Dr. Mamta Chandrashekar	New Dimensions for dynamic business indore	The impact of political skill on transformal leadership	978-93-5213-2829
		Multidisciplinary research journal indore	Political parties and good governance in India	2395-5902
		Rachana Madhya Pradesh hindi granth academy Bhopal	Mulya adharit shiksha-avashyakta	2246-5061
		Sanskрати samrasta bhartiya sahitya	Sahitya aur rajeeti ka antar sambandh	97881767729
		International journal of scientific research in multidisciplinary studies	Women empowerment through rights and laws in 21 st century	
23	Dr. Usha Kumath	Ambedkar journal of science development and justice vol XXVI	Changing trends in customer behaviours in India	0673-6646
		Shodh Jigyasa	Urja khapat evam carbon utsarjan	2395-5902
		International journal of research granthalayah	Jal-vayu parivartan aur bhartiya krashi	ISSN (o) 2350-0530 (P) 2394-3629
24	Prof. Anita Chouhan	Shodh Jigyasa	Padosi deshon ke saath bharat ka videshi vyapar evam sambhavnaye (cheen ke vishesh sandarbh me)	2395-5902
25	Dr. Bindu Gandhi	Naveen Shodh Sansar	Stydy of copper plated mild steel with special reference to corrosion resistance property April june 2015 page no.	ISSN – 2320-8767 Impact factor (.715)

			16- 17	
		Shodh Jigyasa	Fluoride & its effect on body vol. I April -2015 Page No. 71	ISSN- 2395- 5902
		Shodh Jigyasa	A Review study of effluent from small scale electroplating industries & their effect on human health Vol. 1 2016 Page no- 88	ISSN- 2395- 5902
		Divya Shodh Samiksha	Study of adverse effect of plastic on environment April to June 2015	ISSN – 2394-3804 EISSN- 2394-3513 Impact factor .745
		Book enhancement & Management of quality in higher education 2015	Samajik Aarthic Aavasyaktao ke Sandarbh me higher education me gunwatta unnayan	ISBN – 978-93-82588- 580
		Jeewan Kaushal	Vyaktitw vikas me Sampresan Kaushal	ISBN- 81921-96-577
26	Dr. Manju Patni	Research and quality of human life	Manav ki khushaali – adhunika banaam puratanta	ISBN -978-93-84044-50-3
27	Prof. Bela Sachdeva	Shodh Jigyasa	Adivaasi chhatraon ki ashavadi evam nirashavadi pravratni ka adhyayan	ISSN- 2395- 5902 vol.1
		Shodh Jigyasa	Mahavidyalayeen chhatraon me akramakta pravratni ka adhyayan	ISSN- 2395- 5902 vol. 1
		Shodh Jigyasa	Yuvaon me aids ke prati jagrukta	ISSN- 2395- 5902
		Shodh Jigyasa	Study of anxiety level in college students	ISSN- 2395- 5902
		Research journal of multiple discipline	Upbhokta sanrakshan evam adhikaron ke prati jagrukta ka adhyayan	ISSN- 2394-9252
28	Prof. Bharti Dulet	Research journal of multiple discipline	Mahilaon ke vaivahik samayojan ka tulnatmak adhyayan	ISSN- 2394-9252
		Shodh Jigyasa	Yuvaon me aids ke prati jagrukta	ISSN- 2395- 5902
		Shodh Jigyasa	Adivaasi chhatraon ki ashavadi evam nirashavadi pravratni ka adhyayan	ISSN- 2395- 5902
29	Prof. Rajni Agrawal	Shodh Jigyasa	Mahavidyalayeen chhatraon me akramakta	ISSN- 2395- 5902

			pravratti ka ahdyayan	
30	Dr. Manju Sharma	Shodh Jigyasa	Karykaari mahilaon ke parivarik karyon ke sampadan ke prati rujhaan sambandhi sarvekshanatmak adhyayan	ISSN- 2395- 5902
		Shodh Jigyasa	Majdoor grameen mahilaon ke parivarik sambandhon ka adhyayan	ISSN- 2395- 5902
31	Dr. Nandini Sarwate	Shodh Jigyasa	Study of dietary pattern of Adolescent girls	ISSN- 2395- 5902 vol. 1
		Shodh Jigyasa	Supportive indigenous foods used by type-ii diabetic patient – A survey	ISSN- 2395- 5902
32	Prof. Neeta Khare	Shodh Jigyasa	Prevalence of vitamin D among women of different socio-economic background	ISSN- 2395- 5902
33	Dr. Munira Hussain	Shodh Jigyasa	Prevalence of vitamin D among women of different socio-economic background	ISSN- 2395- 5902
		Shodh Jigyasa	Health study of youth working in BPO Call centers	ISSN- 2395- 5902
		Disabilities and impairment	Occurrence of behavioural misconduct among adolescent girls and boys	ISSN 2395-2513
		Research journal of physical and social science	Consumer education regarding safety in food purchase and storage	

- **College Publications: Research Journal, Magazine, Newsletter**

College publishes its own research journal known as “Shodh Jigyasa” with ISSN No. 2395-5902. This year two volumes of this journal have been published.

9. Human Resources

1. Faculty and Administrative appointments: Teaching and Non-teaching

Positions	Teaching Faculty				Non Teaching Faculty	Technical Staff
	Prof	Promoted Prof	Assistant Prof	Guest Faculty		
Sanctioned by State Govt	10		92	08	Nil	19

<i>Filled</i>	10	14	84	08	Nil	19
Sanctioned by Management/ Janbhagidari Samiti	Nil	Nil	Nil	22	Nil	03
<i>Filled</i>	Nil	Nil	Nil	22	Nil	02

2. Guest Faculty: subject-wise appointments

S.no.	Name of the Guest Faculty	Qualification	Subject
1	Paritosh Sharma	M.C.M., M.Sc. (Computer Science)	Computer Science
2	Amit Kanojia	M.Phil., M.Sc. (Computer Science)	Computer Science
3	Pratiksha Nigam	M.Phil., M.Sc. (Computer Science)	Computer Science
4	Neha Vyas	M.C.A.	Computer Science
5	Bimla Joshi	M.Sc. (Computer Science)	Computer Science
6	Jyoti Gupta	M.Sc. (Computer Science)	Computer Science
7	Ritcha Warma	M.Sc. (Biochemistry)	Biochemistry
8	Abhilasha Haritwal	M.Sc. (Biochemistry)	Biochemistry
9	Preeti Shrivastava	M.Sc. (Biochemistry)	Biochemistry
10	Sandhya Sharma	M.Sc. (Biochemistry)	Biochemistry
11	Bhawna Chawda	M.Sc. (Biochemistry)	Biochemistry
12	Dr. Manohar Chitre	Ph.D.	Commerce
13	Dr. Manisha Grewal	Ph.D.	Commerce
14	Anil Rathore	Ph.D.	Commerce
15	Rukmani Yadav	M.Com.	Commerce
16	Reena Jain	Ph.D.	Commerce
17	Kavita Jadhav	M.Com.	Commerce
18	Soniya Bamniya	Ph.D.	Commerce
19	Shweta jain	M.Com.	Commerce
20	Pratiksha Mishra	M.Sc.	Pharmaceutical Chemistry
21	Priyanka Trivedi	M.Sc.	Pharmaceutical Chemistry
22	Varuna Rawat	M. Lib.	Library Science

3. Annual improvement in academic, research & administrative Initiatives

Improve during last year in the academics of students is generally observed. Similarly more research is now performed at this center.

10.Events and Initiatives

We in India are really concerned about making education relevant and enable our graduates to find meaningful and gainful employment. As said earlier, explosion in population has put a lot of strain on our educational resources. Therefore, our Institutional Development Proposal is relevant to the State as well as National development plan. We do understand that highly qualified and experienced faculty is a precious human resource who will play the most important role in nurturing the future of the nation - our youth and also promote research oriented studies and activities. So there should be enough room to upgrade students with training in new pedagogies, facilities, investing in learning resources and upgrading our infrastructure by modernizing classrooms and laboratories with latest educational technology and creating better student support opportunities. We rightly believe in equity and accessibility in education. So we have proposed remedial classes for students of SC/ST/OBC/ etc. Moreover, this being an era of managing information and data we have proposed Information management system that will allow us to manage students' data, curriculum, syllabus, classroom teaching more effectively. To manage a technically advanced scenario we would also require technical assistance.

Objectives:

- a) Improving employability of graduates and increasing enrolment ratio in PG courses
- b) Improving learning outcomes of the students
- c) Preparing teachers for changing educational scenario
- d) Becoming Model College
- e) Implementation of academic and non- academic reforms
- f) Improving interaction with industry
- g) Enhancement of research and consultancy activities

11. Institutional Development plan

Describes the college's activities over the past year under different schemes, discusses performance against strategic/institutional development plans and commitments over the previous year.

Indicator*	Baseline Value	Target for [current year]	Value as on 30th September [current year]

Role of Internal Quality Assurance Cell (IQAC) in academic audit and initiating quality assurance strategies and processes

IQAC and NAAC

1	Year establishment of IQAC Cell	2004
2	Steps taken by IQAC for quality enhancement	<ol style="list-style-type: none"> 1. Promotion of research 2. Full autonomy 3. New academic plans/ courses 4. Improvement in basic infra structure 6. Regular interactions with stake-holders 7. Academy-industry partnership 8. Teachers training program 9. Regular seminar/ workshops and conferences 10. Support from alumni.
3	Future Plans	As described
4	NAAC assessment-	
	<ol style="list-style-type: none"> a. Cycle 1 b. Cycle-2 c. Cycle-3 (Next due) 	<p>B⁺⁺B</p> <p>Cycle -3 Proposed grade "A"</p>
5	Challenges based on NAAC report	<ol style="list-style-type: none"> 1. More research particularly in science subjects. 2. Renovation of old science laboratories. 3. Quality of teachers recruited by janbhagidri committee. 4. Add on courses 5. Transfer of college teachers.
	Plan of action to overcome these identified weaknesses	<ol style="list-style-type: none"> 1. Started our own research Journal "Shodh Jigyasa" 2. Have proposed for renovation and extension of labs. Under RUSA. 3. A Language lab under RUSA 4. capacity building- New hostel funded by UGC
7	NAAC Grade	B

12. Placement Report

Some of the important functions of the Placement cell -

In Indian society ,girls at the graduate level are not yet mature enough to enter the world of industry on their own efforts. Placement and training cell is facilitating to students in planning their careers, and to fulfill this purpose college has established placement cell and training cell separately. This cell has organized vital placement activities and initiated to cater to the needs of students of different streams to make themselves for interview skill , better H.R. skill required by the industry.

Student s analysis for job requirement - (analysis based on direct questions to students – Target group v & vi semester degree level and P.G III&IV semester)

- 48% students are interested in public sector job (Bank ,S.S.C. . Teaching, M.P. P.S.C U..P.S.C etc.)

- 20% want to do their own work .
- 5% want high administrative job
- 15 % want private sectors job, if job is not available in public sector .
- 12% in dilemma

Action Plan for Placement

- (1) Career guidance classes , resume making Analysis of Data bank of students
--- up to July August September
- (2) Appraisal of recruitment and Selection of students for
training according to their preferences --- up to Sep - Nov
- (3) Letter to companies --- Sep -- Nov
- (4) Letter to companies and Industrial visit --- Nov
- (5) Campus for Placement --- Dec up to demand
- (6)Remedies for Improvement --- May to June
- Invitations are sent to companies /organizations with relevant information and Job
Announcement Form (JAF)
Company/organization fills the JAF and sends it to Placement Office.

Activities of Placement Cell

S.no.	Name of the activity	Name of the Resource Person/ agency	Date & Duration
	Personality Development	Edge maker Institute Indore	24-10-2016
	CV Preparation Training	Dr. Kushal Jain, Dr. Sushma Sharma	5, 15 July 2016 (two Days)
	Aptitude Test	Mr. Deepak Parashar	Sep 2016
	Communication Skills	Edge maker Institute Indore Ms. Swati Hillal	Oct 2016
	Online Banking Test	Mr. Amit Pudekar	Sep 2016
	Entrepreneurship Training	Mr. Parakram Choubey	22-10-2016 02 days

Placement Details

S.no.	No. of Students Selected	List of employers/companies	Salary Package
1	56	Hinduja Global Solutions, Indore	One lakh p.a.
2	04	Tata Consultancy Services, Baroda	1.5 Lakh Approx.

Alumni Profile

S.no.	Name of Alumni	Employment status	Name of the organisation
1	Mrs. Sumitra Mahajan	Honorable Speaker, Lokshabha,	Govt. Of India

2	Mrs. Shobha Ojha	President National Women Congress	-
3.	Mrs. Vinita Dharma		
4.	Mrs. Archana Chitnis	Minister, MP State Govt.	
5.	Mrs. Kalpana Jhokarkar	Popular Vocalist Classical Music	
6.	Dr. Shobha Sharma	HOD, Departement of Botany	New GDC Indore
7	Ms. Ravee Tiwari		Airport Authority

13. Innovations and Best Practices

1. Ten days self-defence training organized for visually impaired girls in which participation of 20 students was observed (dated 25-07-16 to 05—8-16)
2. A workshop was organized for the use of smart phones with talkback application for visually impaired girls students. Participation of 45 visually impaired girls was observed (dated 21-09-16)

14. SWOC Analysis (strength , weaknesses, Opportunity and Challenges

SWOC ANALYSIS

Strengths

1. Highly experienced teaching faculty members who provide whole hearted services towards teaching students. Most of them have more than 25 years of service and 93% are holding Ph.D. degree, 38 out of 110 are research guides.
2. College is very conveniently located and has adequate space for various activities. There are four major blocks in the college i.e. Block one – Administrative block Second Science Block, Third Humanities and Home Science Block and Fourth Biochemistry and History Department Block. Each practical department has a separate laboratory for UG and PG practical in the Science Block and Geography Department. The Home Science department has separate laboratory for each subject with a Computer Room as well.
3. The Computer section caters to the functions of the lead college for obtaining, compiling and forwarding all the required information for the Higher Education Department in Bhopal (M.P.).

4. Plantation and maintenance of a front garden and Botanical Garden and plenty of greenery through trees planted by the founder early Principals of the college since 1960's
5. Excellent teacher taught relations are present in the institution supporting a healthy, ragging-free environment.

Weaknesses

1. Limitations of office and laboratory staff because of a shortage of personnel i.e. without a Registrar, Accountant and Head Clerk. Accounts and related work is delayed because of such shortage.
2. Autonomy is partial and undergraduate level has yet to receive autonomy. Examinations and results are somewhat delayed and one semester merge into the next.
3. Recruitment, Structure of syllabi, activities of the college and the lead college functioning is controlled by the State Govt., which does not allow an independent progress of the college,
4. Most students come from rural areas and a large proportion (50%) are from SC, ST and OBC categories which sometimes makes teaching difficult within the time constraints.

Opportunities

1. Research related developments are highly significant in the developmental opportunities of the college. There are 98 research students doing their work under the college faculty. A few others are registered under supervisors' working outside of this college. New areas of research need to be explored.
2. Extending internet/Wi-Fi facility to all the departments which at present is restricted.
3. Creating facilities for placement or self-employment through special skills training programs relevant to girls.

Challenges

1. The biggest challenge for the college is to provide adequate education to such a large number (4826) of students in different faculties- Science, Home Science, Commerce, Arts and Library Science.
2. Conducting examinations (Autonomous cell) for the postgraduate students in 21 subjects within the time frame along with the university examinations for undergraduates.

3. Enhancing research and academic standards in such large numbers of students with the help of the available teaching and other resources.
4. Providing adequate student activities to fulfil student support requirements.

Today all institutions face huge challenges with regard to improving the quality of education imparted and maintaining the same. A close look at the SWOT indicates that funds are needed for more modernized classrooms, and laboratories, better library resource, better accessibility of students to these learning resources, improving opportunities for acquiring higher qualifications. All these will be possible only if we pay adequate attention to strengthening the teaching faculty by increasing the facilities and imparting more training in emerging areas of educational practices and research. Special attention also needs to be given to English language skills of the student which will help in improving their academic performance as well as bringing them at par with English medium students. It also needs to be mentioned that employers today expect people to be well rounded .So it will be worthwhile to train students through student support programmes. Language labs can be setup apart from Science Laboratories. Therefore we propose for future plans

15. Looking Ahead - Future Plans

Time – line of (projected) development plan

S.No.	Time line	Academic Program	Remark	Infrastructure	Funds/Remark
1	2015-2017	1.New course in B.Sc. Microbiology, And P.G. in mathematics 2. seminar/workshop (humanities) 3. ICT Training for teachers 4. proposal for full autonomy	1. Self-finance 2. under various schemes of funding agencies 3. college level 4. in progress	1.New hostel 2.New construction of conference hall/multiple utility hall 3. extension of physics lab 4. Scientific equipment and furniture.	UGC and RUSA project
2	2017-2019	1. program in P.G., pharma-chemistry and certificate course in food preservation 2. seminar/workshop (Science dept.) 3. teachers training program 4. efforts for solar	1. govt. approved and funded. 2. various schemes 3. college level 4. Efforts to generate govt. funds for the	1. new establishment for autonomous dept.	-----

		panel	same.		
3	2019-2021	1. U.G. program in - --- and P.G. program in----- 2. seminar /workshops/ conferences	1. self- finance and govt. approved	1. sports facilities 2. garden development 3.	-----
4	2021-2023	1. U.G. program in - --- and P.G. program in----- 2. seminar /workshops/ conferences	1. self- finance and govt. approved		-----
5	2023-2025	. U.G. program in --- - and P.G. program in----- 2. seminar /workshops/ conferences	. self- finance and govt. approved		-----

Appendix: Institutional Performance Data and Financial Reports

Part II

Appendix: Institutional Performance Data and Financial Reports (all part II data kindly fill in attached excel sheet)

1. Sanctioned seats and enrolment

(a) Sanctioned Seats					
	SC	ST	Other Reserved Categories	General	Total
Undergraduate	339	474	316	1131	2260
Postgraduate	143	199	133	475	950
PhD	-	-	-	-	

Data Source: AISHE

(b) Enrolment							
		Undergraduate			Postgraduate		PhD
		2013-14	2014-15	2015-16	Year 1	Year 2	
SC	Male	0	0	0	0	0	
	Female	334	323	272	58	40	
ST	Male	0	0	0	0	0	
	Female	530	487	312	141	118	
Other Reserved Categories	Male	0	0	0	0	0	
	Female	535	457	405	117	84	
General	Male	0	0	0	0	0	
	Female	473	365	426	101	85	
Total	Male	0	0	0	0	0	
	Female	1872	1632	1415	417	327	35

Data Source: AISHE

Number of sanctioned seats by discipline group and enrolment in the 1st year as on September 30th [2015-16]				
Discipline Group	Undergraduate		Postgraduate	
	Sanctioned Seats	Enrolment	Sanctioned Seats	Enrolment
Arts	600	371	550	181
Commerce	680	658	60	59
Home Science	60	57	150	53
Science	890	843	190	176

Data Source: AISHE

2. Transition and on-time graduation

(a) Transition from the 1st year to the 2nd year (Undergraduate)

		Number of students admitted to the 1 st year in [the previous academic year] (*)	Of (*), the number of students currently enrolled in the 2 nd year who:	
			Passed all subjects in the 1 st year	Were Allowed to Keep Terms
SC	Male	0	0	0
	Female	334	158	
ST	Male	0	0	0
	Female	530	221	
Other Reserved Categories	Male	0	0	0
	Female	535	327	
General	Male	0	0	0
	Female	473	343	
Total	Male	0	0	0
	Female	1872	924	800

(a) Transition from the 1st year to the 2nd year (Postgraduate)				
		Number of students admitted to the 1 st year in [the previous academic year] (*)	Of (*), the number of students currently enrolled in the 2 nd year who:	
			Passed all subjects in the 1 st year	Were Allowed to Keep Terms
SC	Male	00	00	00
	Female	68	46	05
ST	Male	00	00	00
	Female	146	104	15
Other Reserved Categories	Male	00	00	00
	Female	117	100	03
General	Male	00	00	00
	Female	130	93	04
Total	Male	00	00	00
	Female	461	343	27

Data Source: AISHE, examination results declared by [affiliating university/autonomous college]

(b) On-time graduation (Undergraduate)				
---	--	--	--	--

		Number of students admitted to the 1 st year in [year t-3] (*)	Of (*), the number of students who passed all final year examinations for the previous academic year
SC	Male	00	00
	Female	334	124
ST	Male	00	00
	Female	530	143
Other Reserved Categories	Male	00	00
	Female	542	205
General	Male	00	00
	Female	473	242
Total	Male	00	00
	Female	1879	714

Data Source: AISHE, examination results declared by [affiliating university/autonomous college]

(b) On-time graduation (Postgraduate)			
		Number of students admitted to the 1 st year in [year t-2] (*)	Of (*), the number of students who passed all final year examinations in the current year
SC	Male	00	00
	Female	68	43
ST	Male	00	00
	Female	146	69
Other Reserved Categories	Male	00	00
	Female	117	90
General	Male	00	00
	Female	130	74
Total	Male	00	00
	Female	461	276

Data Source: AISHE, examination results declared by [affiliating university/autonomous college]

3. Faculty and administrative staff in position and training

(a) Faculty and administrative staff in position as on 30th September, [current year]		
	Reserved	Unreserve

		SC	ST	MP Resident s	Female s	Other s	d
Assistant Professor	Sanctioned						
	Filled (Regular)	05	05	94	78	11	83
	Filled (Contract)	0	0	0	0	0	0
	Guest Lecturers	1	1	8	8	2	4
Associate Professor	Sanctioned	0	0	0	0	0	0
	Filled (Regular)	0	0	0	0	0	0
	Filled (Contract)	0	0	0	0	0	0
	Guest Lecturers	0	0	0	0	0	0
Professor	Sanctioned						
	Filled (Regular)	-	-	7	6	1	6
	Filled (Contract)	0	0	0	0	0	0
	Guest Lecturers	0	0	0	0	0	0
Admin. Staff (all)	Sanctioned						
	Filled (Regular)	0	0	5	2	0	4
	Filled (Contract)	0	0	0	0	0	0
Account ant	Sanctioned	0	0	0	0	0	1
	Filled (Regular)	0	0	0	0	0	0
	Filled (Contract)	0	0	0	0	0	0

Data Source: AISHE

(b) Training of faculty and administrative staff between October 1st [previous year] to September 30th [current year]				
		Leadership and management training	Training in the area of academic specialisation	Other training
Assistant Professor	Number trained	2	15	-
	Avg. number of days	1	21	
Associate Professor	Number trained	nil	nil	nil
	Avg. number of days	nil	nil	nil

Professor	Number trained	2	2	nil
	Avg. number of days	1	21	nil
Administrative Staff (all)	Number trained	nil	N/A	nil
	Avg. number of days	nil	N/A	nil
Accountant	Number trained	nil	N/A	nil
	Avg. number of days	nil	N/A	nil

(c) Faculty qualifications as on 30th September [2017]						
		PhD	Postgraduate	Undergraduate	Others	
Assistant Professor	Regular	49	13		3	
	Contract	-	-	-	-	
	Guest Lecturers	6	2	-	-	
Associate Professor	Regular	--	-	-	-	
	Contract	-	-	-	-	
	Guest Lecturers	-	-	-	-	
Professor	Regular	41	-	-	-	
	Contract	-	-	-	-	
	Guest Lecturers	-	--	-	-	

Data Source: AISHE

4. Student support services

(a) Financial support received (from all sources) by students in the college between October 1st [previous year] to September 30th [current year]							
		Undergraduate		Postgraduate		PhD	
		Number	Average Value (Rs.)	Number	Average Value (Rs.)	Number	Average Value (Rs.)
SC	Male	0	0	0	0		
	Female	501	8000 Approx.	167	8000 Approx.		
ST	Male	0	0	0	0	0	0
	Female	756	8000 Approx.	252	8000 Approx.	0	0
General	Male	0	0	0	0	0	0
	Female	364	3300	0	0	0	0
Total	Male	0	0	0	0	0	0
	Female	1621	7000 Approx	419	8000	0	0

(a) Financial support received, from the DHE, by students in the college between October 1st [previous year] to September 30th [current year]							
		Undergraduate		Postgraduate		PhD	
		Number	Average Value (Rs.)	Number	Average Value (Rs.)	Number	Average Value (Rs.)
SC	Male	0	0	0	0		
	Female	501	8000 Approx.	167	8000 Approx.		
ST	Male	0	0	0	0	0	0
	Female	756	8000 Approx.	252	8000 Approx.	0	0
General	Male	0	0	0	0	0	0
	Female	364	3300	0	0	0	0
Total	Male	0	0	0	0	0	0
	Female	1621	7000 Approx	419	8000	0	0

(b) Hostel occupancy as on 30th September, [Current Year] (all hostels)		
Capacity - 188		Number of residents
Males: Nil		
Females: 188		
SC + OBC	Male	Nil
	Female	09 + 108 = 117
ST	Male	Nil
	Female	17
General	Male	Nil
	Female	54
Total	Male	Nil
	Female	188

Data Source: Hostel register verified against fee receipts on record

(c) Hostel occupancy as on 30th September, [Current Year] (girls only hostels opened after _____)	
Capacity	Number of residents
SC + OBC	117
ST	17
General	54
Total	188

Data Source: Hostel register verified against fee receipts on record

5. Examination Results

(a) Examination results for [previous academic year] (undergraduate)					
	SC	ST	Other Reserved Categories	General	Total

		M	F	M	F	M	F	M	F	M	F
1st year	Appeared										1782
	1 st division	0	34	0	45	0	41	0	69	0	96
	2 nd Division	0	27	0	38	0	37	0	41	0	714
	3 rd Division	-	.	.	-	-	-	-	-	-	94
2nd year	Appeared										1571
	1 st division										121
	2 nd Division										538
	3 rd Division										339
3rd year	Appeared										
	1 st division										345
	2 nd Division										370
	3 rd Division										42

(a) Examination results for [previous academic year] (postgraduate)											
		SC		ST		Other Reserved Categories		General		Total	
		M	F	M	F	M	F	M	F	M	F
1st year	Appeared										
	1 st division	Divisions are allotted only for fourth semester									
	2 nd Division										
	3 rd Division										
2nd year	Appeared	0	48	0	97	0	97	0	89	0	331
	1 st division	0	31	0	46	0	70	0	64	0	211
	2 nd Division	0	12	0	23	0	20	0	10	0	65
	3 rd Division	-	-	-	-	-	-	-	-	-	-

6. Placement and student tracking

(a) Placement and Tracking of Students who graduated in [previous academic year] (Undergraduate)	
	Number of students who Of (*), the number of students who were successfully tracked and are:

		graduated in [the previous academic year] (*)	Employed/ Self-employed	In education/ training	Unemployed	Not in the labour force
SC	Male	0	0	0	0	0
	Female	272	11	68	193	NA
ST	Male	0	0	0	0	0
	Female	312	04	146	162	NA
General	Male	0	0	0	0	0
	Female	831	46	247	538	NA
Total	Male	0	0	0	0	0
	Female	1415	61	461	893	NA

Data Source: Records of the college placement cell

(b) Placement and Tracking of Students who graduated in [previous academic year] (Postgraduate)						
		Number of students who graduated in [the previous academic year] (*)	Of (*), the number of students who were successfully tracked and are:			
			Employed/ Self-employed	In education/ training	Unemployed	Not in the labour force
SC	Male	0	0	0	0	0
	Female	50	3	7	40	NA
ST	Male	0	0	0	0	0
	Female	138	8	8	122	NA
General	Male	0	0	0	0	0
	Female	192	43	108	41	NA
Total	Male	0	0	0	0	0
	Female	380	54	123	203	NA

Data Source: Records of the college placement cell

7. PhDs Awarded

Number of PhDs awarded between October 1st [previous year] to September 30th [current year]	
Discipline Group	Number
Arts	10
Commerce	3
Home Science	8
Science	7
All disciplines	28

Data Source: AISHE

8. Research and consultancy

Revenue generated through externally funded research and consultancies over [previous financial year]		
Discipline Group	Number of active projects	Total Revenue Generated (Rs. lakhs)
Arts	02	275000
Science	02	190000
All disciplines	04	465000

Data Source: College/university records

Number of papers published in peer-reviewed journals between October 1st [previous year] to September 30th [current year]			
Discipline Group	Number of papers published		Number of published papers through cross-institute research collaboration
	International Journals	National Journals	
Arts	10	50	-
Commerce	-	10	-
Home Science	5	30	-
Science	8	48	-
All disciplines	22	138	-

Date Source: College records based on published papers submitted by faculty

9. NAAC accreditation and UGC autonomy

	Date of Application (LOI & SSR submitted)	Date on which accreditation was received	Grade	Valid till
1st Cycle	-	2004	B+	2009
2nd Cycle	-	Dec 2014	B	Dec 2019
3rd Cycle	-	-	-	-

Date of submission of the Annual Quality Assurance Report for the current year:25/12/2016

Does the college have currently valid UGC autonomy? -yes, only for post graduate students . order number F-22-1/2010(AC), dated 25 may 2010.

10. Institutional Trends

Variable	Baseline Value	[Year 1]	[Year 2]	Current Year3
Percentage of sanctioned seats in the 1 st year filled (undergraduate, all categories)	3526	3941	3730	4010
Percentage of sanctioned seats in the 1 st year filled (postgraduate, all categories)	490	520	450	510
Transition rate from the 1 st year to the 2 nd year (undergraduate, all categories)	46%	47%	48%	50%
On-time graduation rate (undergraduate, all categories)	28%	32%	37%	38%
Transition rate from the 1 st year to the 2 nd year (post graduate, all categories)	68%	65%	68%	74%
On-time graduation rate (postgraduate, all categories)	55%	54%	55%	60%
Regular faculty in position rate (all levels, reserved categories)	50%	50%	50%	50%
Regular faculty in position rate (all levels, unreserved categories)	100%	100%	100%	100%
Percentage of regular faculty with PhDs (all levels)	80%	81%	85%	86%
Employment rate of graduates from the previous academic year (undergraduate, all categories)	20%	20.25%	20.25%	20.25%
Employment rate of graduates from the previous academic year (postgraduate, all categories)	-	30%	30%	30%
Percentage of total revenue generated through externally funded research	-	-	-	-
Number of papers published in peer-reviewed, international journals	80%	105	120	150

- Only 10% students are interested in private sector.

11. Financial Reports

Name and registration number of the auditor – R. D. Joshi & Co., Shiv Vilas Palace,
Rajwada, Indore

Number of audit observations recorded by the auditor- One

Number of audit responses found satisfactory, as certified by the project directorate_____.

Certified audit reports as per the standard Chart of Accounts to be attached.

12. All India Survey of Higher Education

Date on which all applicable fields of the Data Collection Format for the All India Survey of
Higher Education were completed and submitted **08-02-2016**