

Annual Report 2016 - 2017

This format outlines the annual reports to be published by all colleges in the Madhya Pradesh on their websites, by October 31st of each year. Part I is intended as a guide and colleges are free to alter the contents and format as they see fit. Part II, the Appendix (Institutional Performance Data and Financial Reports), is mandatory and colleges are required to report all data as per the attached format and instructions.

Important Information –

- Name of the college - Govt. Degree College Shahpura
- Place of the college - Umaria Road Shahpura
- District - Dindori
- Division - Jabalpur
- Year of establishment of college - 1983
- Name and Contact details(Mail id , Phone) of Principal - Shri C.S. Paraste
hegcshadin@mp.gov.in, 9424369992
- Name , Post and Contact details of (mail id, Phone no.) of Reporting In charge - Shri
Ajay Bhusan, Asstt. Prof. (Pol.Science)
- Date of report submission - 20-01-2018

Part I

- 1. The Principal's Report (2 pages)-** Highlights the key activities, events, and successes of the past year and briefly describes major new initiatives to be undertaken over the next year.

The Principal is the head of the Institute who provides leadership and inspiration in planning, organization and execution of all programme with active participation of the staff. he maintains healthy and harmonious contact with teacher, parents, alumni and the public.

The college has its own mechanism to monitor and evaluate the plans and policies and effective implementation of the institution. At the beginning of session the Principal calls a meeting of faculty members. The Principal forms various committees and assign the work.

The committees are directed to prepare action plans and submit the same to the Principal for approval. The head of the institution appoints the conveners for various committees and nominates the members of committees based on the potentials of the staff members. The guidelines defining the roles and responsibilities of the committees are communicated to the members. The committees carry out the projects taken up and at the end of the academic year the conveners submit the reports to the Principal. Feedbacks on various aspects of the functioning of the college are obtained. The confidential report of the staff members is sent to the department of higher education by the Principal.

The different units of institution such as NSS, Career Counselling Cell, Sports, Red Ribbon and Personality Development Cell have functioned with active role playing under the instruction of the Principal and policy of the government.

Furniture's have been purchased regarding the increase of admission. 100% scholarships have been distributed. The estimate of lab & girls toilet have been sent to the concerned authority. Smart Phone have been distributed successfully.

The students have been selected for divisional level activities - Youth Festival, Sports.

The New Initiatives to be undertaken over the next year are :-

1. To get accreditation by NAAC
2. To conduct seminar.
3. To make play ground playable.

2. Overview (1 page)

(i) Vision, Mission and Objectives of the college

The vision is to get accredited by NAAC and become the preferred college for quality education in this tribal dominated area of Madhya Pradesh. The need of the institution is to enroll all the students in the college and impart value based education by providing better educational facilities to make their future bright.

The mission of the college is to provide quality education and make students employable in a way that they become responsible citizens of the society.

To educate and empower the learners to realize their potential through righteous blending of knowledge, skills and values for serving the society.

- To give counseling to students and create awareness for opportunities.
- To strive for better results.
- To develop secular spirit and religious tolerance.
- To create a caring, supportive and healthy environment in the college.

The objective of the college are as follows :-

- To uplift the rural youth with good education.
- To promote core values and workplace values.
- To upgrade the rural students with the latest information in various sectors like IT, entrepreneurship and environmental studies.
- To offer opportunity to the students, who belong to the weaker section of the society, for learning and realizing what is their position in society and their role in the development of the nation.
- To make them self-sufficient so that they can work for the development for the society in general and the world at large.

- (ii) Brief introduction of the college (including the status (Govt. / Lead/ Constituent/ Affiliated/ Private), Parent University, UGC recognition, CPE status, etc), location & campus area

Govt. Degree College Shahpura Distt-Dindori is an old college. The institution was established in 1983 as a degree college. The college is situated near Umaria Road Shahpura. The Campus area of the College is 10.23 acres. The College is allocated near the lap of the holy river Narmada. it is about 56km. from Distt Head Quarter and 90km. from Jabalpur city. The area is renowned for the Ghughua National Fossils Park, 14 km away from here. This is an Ideal institute for higher education to provide the needs of remote tribal, rural & backward students. The sole aim and ambition of the institute is to impart better and qualitative education to the aspiring students belonging to socially and economically downtrodden tribal sector of this area.

The College is registered under regulation of UGC ACT 1956 2f & 12b in 19th March 2007. It has faculties of art & science and has PG Department in Hindi, Economics & History. The college is affiliated with Rani Durgawati University Jabalpur (MP). In this college the subject taught are Hindi, English, Political Science, Economics, Sociology, History & Geography in arts and Physics, Chemistry, Mathematics, Botany and Zoology in Science.

- (iii) History of the college with significant milestones

The College was established in 1983 as a Degree College. initially it was started in the High School building near Bus Stand Shahpura. Later it was shifted in Umaria Road Shahpura in the year 2000. now it is running in it on building. Since its inception the institute is progressing in academic, as well as extra curricular activities. The students have been selected in various fields - administrative, Forest, Police, Teacher & in Health Department.

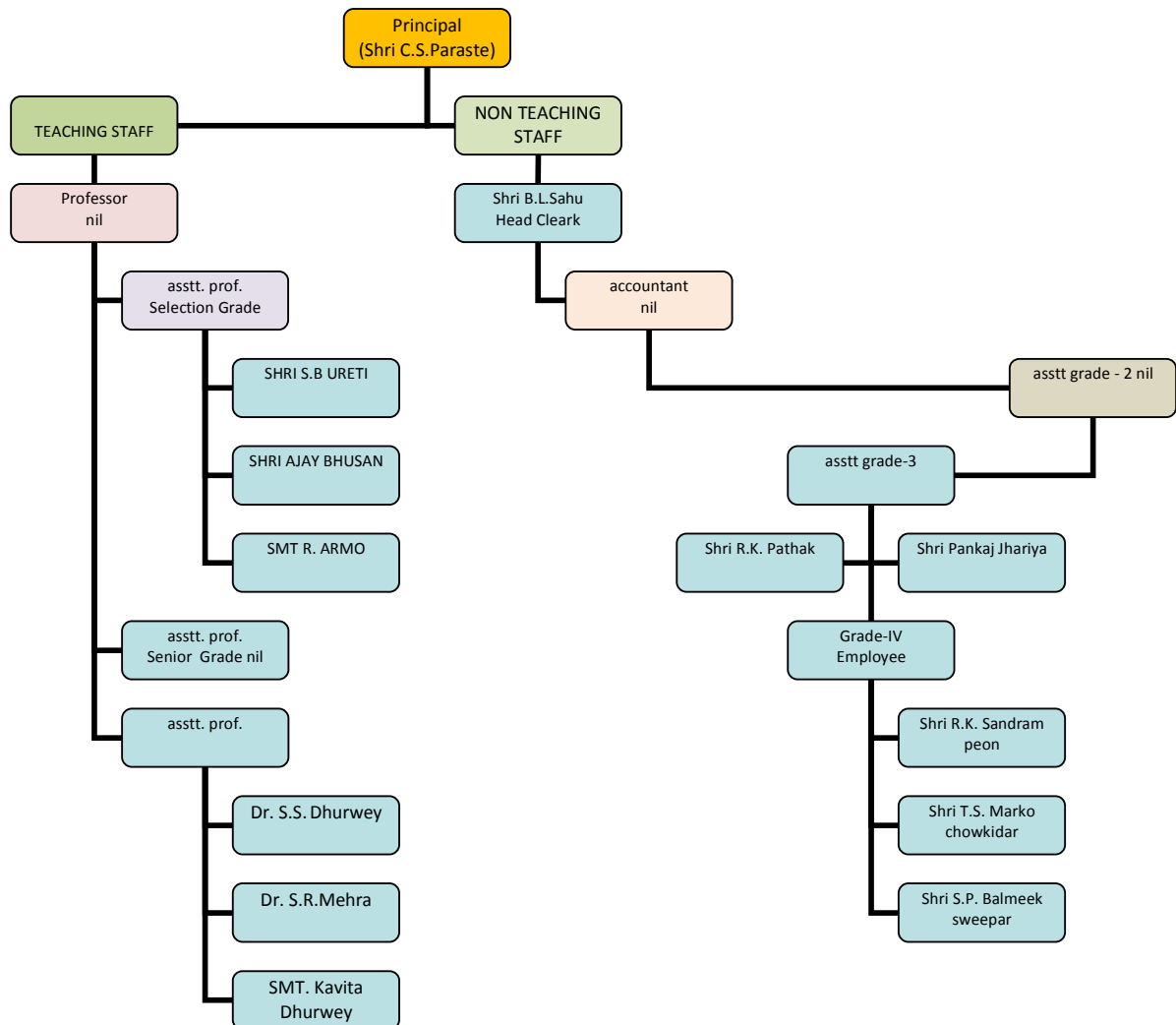
- (iv) Faculties and major disciplines

1. B.A. (HINDI, ENGLISH, ECONOMICS, GEOGRAPHY, SOCIOLOGY, POLITICAL SCIENCE, HISTORY)
2. B.Sc. (PHYSICS CHEMISTRY ZOOLOGY, BOTANY, MATHS)
3. M.A. (ECONOMICS, HINDI, HISTORY)

3. Senior Management Team and Board of Governors (1 page)

Lists the members of the senior management team (Principal, Registrar, Deans etc.) and members of the Board of Governors including their designations and professional backgrounds.

Administrative Hierarchy



4. Admission Statistics (1 page)

- The number of applicants at the UG and PG level who ranked the college as their 1st, 2nd and 3rd preference, the number of applications received for PhD courses, and the number of students admitted at each level as per the following format.

Applications	UG	PG	PhD
Applications that ranked the college as the 1 st preference	213	16	NA
Applications that ranked the college as the 2 nd preference	71	0	
Applications that ranked the college as the 3 rd preference	13	0	
Total number of applications received	297	16	
Number of students admitted	297	16	

Data Source: E-pravesh portal, records of the affiliating university

- A brief demographic profile of students admitted (in terms of gender, caste, whether from MP etc.)

Name of the Course	Gender		Category				% of students from the State	% of students from other states
	MALE	FEMALE	SC	ST	OBC	GEN		
B.A.	88	78	36	96	28	06	100%	
B.Sc.	78	53	23	37	55	16	100%	
M.A.	13	03	01	07	07	01	100%	

5. Academic Programs: Core Programs - UG & PG

Core programs at UG level

Stream	Name of the Core Program	Eligibility	Optional subjects
		10+2 from a recognized Board OR 10+2 with relevant vocational course from M.P. Board	Foundation course + a group of 3 optional subjects
Science	Bachelor of Science		Maths, Physics, Chemistry
Science	Bachelor of Science		Chemistry, Botany, Zoology
Arts	Bachelor of Arts		Economics - Geography - Hindi
Arts	Bachelor of Arts		Economics-Political Science- Sociology
Arts	Bachelor of Arts		Economics - Hindi - Political Science
Arts	Bachelor of Arts		Economics - English - Geography
Arts	Bachelor of Arts		Geography - Hindi - History
Arts	Bachelor of Arts		Geography - History - Sociology
Arts	Bachelor of Arts		Hindi - Political Science - Sociology
Arts	Bachelor of Arts		Hindi - History - Political Science
Arts	Bachelor of Arts		English - Geography - Sociology

Core Options at PG level

Faculty	Name of the Core Program	Eligibility	Subject Options
---------	--------------------------	-------------	-----------------

			<i>No. of subjects</i>
Arts	Master of Arts	3 year Degree course in any faculty/ Honours degree course in same subject	<i>ECONOMICS</i>
			<i>HINDI</i>
			<i>HISTORY</i>

M.Phil/ Ph.D. Programs

S.no.	Subject	Eligibility	No. of scholars registered
NIL	NIL	NIL	NIL

PG Diploma/ Diploma/ Certificate/ Self-financed/ Skill based Vocational/ Short term courses

Name of the Course	Department	Duration	Fees	Seats
NIL	NIL	NIL	NIL	NIL

6. Academic Calendar 2016 - 2017

Academic Work	First/ Third/ Fifth Semester	Second/ Fourth/ Sixth Semester
Orientation Classes/Zero Classes/SWOT analysis	01 July to 13 July 2016 (10 working days)	02 Jan 2017 (01 working day)
Teaching and Continuous Comprehensive Evaluation	14 July to 07 Nov. 2016 (90 working days)	03 Jan. 2017 to 25 Apr. 2017. (90 working days)
CCE Schedule	Fourth week of Sept. 2016	Second week of March 2017
Preparation Leave	08 Nov 2016 to 14 Nov. 2016 (7days)	26 Apr. 2017 to 27 Apr. 2017 (2 days)
Practical Exams (Graduation/Post Graduation)	In between 15 Oct. 2016 to 07 Nov. 2016	In between 25 March to 25 April 2017
Semester and ATKT Exams	15 Nov. 2016 to 21 Dec 2016	28 Apr. to 26 May 2017
Declaration of Examination Results	till 31 Dec 2016	till 15 June 2017
Semester Break (for students)	22 Dec to 31 Dec 2016 (10 days)	27 May to 30 Jun. 2017 (35 days)
Semester Break (for teachers)	22 Dec to 31 Dec 2016 (10 days)	27 May to 15 Jun. 2017 (20 days)

7. The Student Experience (4 pages)

Briefly describes student life in the college:

- Infrastructural facilities available to students - Classrooms, Smart classrooms, laboratories and equipment, Common Research Lab, Hostel; Canteen; Garden; Students common room, Auditorium, Sports Complex & other facilities

The College has a campus area spread over 10.23 acres of land. the infrastructure of the college has been expanded to meet the requirement of curriculum and student related services. There are 14 classrooms out of them two rooms are with projector facility for teaching and learning process. There is a Geographical lab providing different learning resources as atlas , maps, geographical apparatus.

- Library as a learning resource- advisory committee, its composition, facilities & services (e & print), annual improvement initiatives

The college has constituted an effective Library Advisory Committee:-

- a) Shri S.B. Uraiti (Convenor)
- b) Shri Ajay Bhusan
- c) Smt. R Armo
- d) Dr. S.S. Dhurwey
- e) Dr.S.R. Mehra

The advisory committee makes discussion and finalizes the infrastructural and academic requirement of the library & chalks out the strategy regarding the working of the library affairs so that the facility can be utilized to the maximum extent by the staff and the students. Under the supervision of this committee students are distributed books from ST/SC Book Bank Scheme. They also give the advice to the Principal for the purchase of books and journals. For students Reading Room, the Advisory Committee gives advice for maintenance. The fully Library has an open shelf system which facilitates a free access of books and hence knowledge to the students. Newspaper and Journals stands in the library provide an access to research, news and other information to the students/readers.

The college has constituted a Purchasing Committee for this purpose. At the outset, the Principal of the college circulates a notice and requisitions for books are invited from all the head of departments. Every department of the college is asked to submit the lists of books, magazines and journals to be purchased with reference to new syllabi and current needs of the students. The lists are forwarded to the librarian. The Purchasing Committee discusses over the demands and needs of the books and finalize the list, and are sent to purchase books, magazines and journals from different sources.

The library staff supports the students and teachers by fulfilling their requirements of books, newspapers, journals, magazines and research needs. Major newspapers are subscribed to in the library. Syllabus of all academic programmes and old question papers are stored.

- Student support services:
 - ✓ IT enabled services

The college is quite optimistic to upgrade IT infrastructure and associated facilities by purchasing of New Hardware as well as software for offices/ cells and providing them with subject/research related solutions. The college also intends to upgrade the PCs with latest configuration available in the market.

The college has made available computer with internet facilities for specific use. The teachers can take help of the ICT resources to enrich their prescribed curriculum with the help of internet. The students can also take help in their project.

- ✓ Financial assistance (scholarships/ schemes for SC/ST/OBC/ minority, Group & Health Insurance Schemes)

The college provides SC/ST/OBC student's scholarships annually, as per the rule of state government MP. The details of the year 2015-16 is as follows:-

2015-16		
Cate.	student	Rs
ST	203	907511
SC	71	318383
OBC	104	583720
Total	378	1809614

Students are given necessary support guidance and counseling for their overall development. Scholarships are given to ST, SC and OBC students. "Gaon Ki Beti" is available for the girl students of all categories. "AvagamanYojana" for the girl students comes from remote areas. The SC, ST and OBC students who live in separate accommodation are provided "AvasYojana."

- ✓ Personal enhancement & development schemes- NCC, NSS, Facilities for physically challenged & slow learners; Tutor-Guardian Scheme, Grievance Redressal Cell, Entrepreneurship Cell, Remedial classes, Career Guidance Cell.

The college has constituted Swami Vivekananda Career Guidance Cell which works as a placement cell. Throughout the year, the Cell moulds the students towards career advancement.

The institution is fully adhering to governmental policies regarding the needs of differently-abled students. Seats are reserved at the time of admission in various programmes. The institute caters to the needs of differently abled students and ensures adherence to government policies in this regard by providing necessary facilities like toilets and ramps.

The college is devoted to attract the students for participation in various extracurricular activities by ensuring consistent encouragement and motivation. The necessary facilities are provided and adequate funds are allotted. The sports and cultural committees supervise the extracurricular activities.

The institution promotes NSS and Red Ribbon Club students for various extension activities like camp in remote village and making the people aware of clean and healthy environment. They are also encouraged to celebrate AIDS day, international women's day focusing on women empowerment in the society, awareness voter's day and to celebrate Sadbhavana Diwas to spread communal harmony.

- ✓ Extracurricular activities: Calendar of activities (Sports, Youth Festival, cultural and literary events), Achievements, Awards

Higher Education Department of M.P. issues a time table to organize various games at different levels. According to this time table Football, Volleyball, Basketball, Badminton, Athletics, Chess, Yoga, Judo, Kabbaddi, Cricket, etc. are played

Youth Festival is organized every year in which Quiz competition, debate, Essay writing, folk dance, folk music, classical music, rangoli, drama etc. events take place at college level and district level. Selected students take part in Youth festival organized at Distt.level, division level.

- ✓ Major student welfare initiatives over the past year

The following student welfare initiatives have been done by the college.

1. Took grant for toilet construction by Jila Yojna Samiti Dindori
2. 100% distribution of scholarship.
3. Smart Phone distribution.
4. White washed of college building.

- Extension Activities

Rallies under the unit of NSS and Red Ribbon Club to protect the environment are often taken out. Students march holding banners bearing thought-provoking slogans to draw the attention of people in these issues. Rallies to mark-Aids Awareness, Voter Awareness and Environment Day are organized.

Rallies for celebrating a pollution free, cracker-free Diwali are a regular features of the college.

Gajar Unmulan was carried out in the college campus.

Some social issues leave a lasting imprint on the minds of the citizens. The brutal rape case of Delhi was vociferously condemned by the college. We participated in a rally starting from Janpad office to Niwas Tiraha. It was a candle march in which the students, staff & Principal of the college and local administration participated holding candles and shouting slogans.

8. Student Achievements (5 pages)

Highlights the most significant academic and non-academic achievements of students over the past year. This can include major academic awards and scholarships received student research, and sports and other extracurricular activities. Focusses, in particular, on profiling top achievers and describing how resources provided by the college helped these students succeed.

ACADEMIC

- Merit

S.no	Name of the award/ medal/ meritorious scholarship	Name of the recipient	Class	Area of achievement
nil	nil	nil	nil	nil

- Research scholarship/ award

S.no	Name of the scholarship award/	Name of the recipient	Class	Area of research
nil	nil	nil	nil	nil

CULTURAL

- Participation

S.no	Name of the event	District Level	State Level	University	National Level
01	Youth Festival(kar ma dance)	District Level	nil	University	nil

- Awards and Achievements

Name of the student	Class	Event	Award/Achievement
nil	nil	nil	nil

SPORTS

- Participation

S.no	Name of the event	Division Level	State Level	University/ National Level	International Level
01	kabaddi	Division Level	nil	nil	nil

- Awards and Achievements

Name of the student	Class	Sport	Award/Achievement
nil	nil	nil	nil

9. Research Activities (4 pages)

Identifies major research themes, places these themes in their social and economic context, highlights major research achievements (publications, collaborations, intellectual property produced, external funding received etc.), and profiles top researchers. Lays out the research agenda and identifies themes for the coming year.

- Major research themes

S. No.	Department	Prioritized research area and expertise	Social/ economic context
nil	nil	nil	nil

- Major/Minor research projects

S. No	Name of the Faculty	Year	Title of the project	Name of funding Agency/ Industry	Total grant received
01	Dr. S.R.Mehra AP. Geography	2015-2017	Recent level & Trend of Women labour participation- study of Chindwara district(M.P.)	UGC	150000/-

- Papers presented in regional, national and international seminars/ conferences

S. No.	Name of the faculty	Regional/ State	National	International
01	Dr. S.S. Dhurwey	MP	National	nil

- Publications in national/ international journals

S.No.	Name of the faculty	Name of the journal	Title of the paper	ISSN/ ISBN number /Impact factor
01	Dr.S.R. Mehra	SOUTH ASIA JOURNAL OF MULTI DISCIPLINARY STUDIES	Climate Change & its Impact on Environment & Society	ISSN - 2395-1079
02	Dr.S.R. Mehra	GLOBAL JOURNAL OF ENGINEERING SCIENCE & SOCIAL SCIENCE STUDIES	DHWANI PRADOOSAN KA SWASTHYA PER PRABHAV	ISSN - 2394-3084
03	Dr.S.R. Mehra	SOUTH ASIA JOURNAL OF MULTI DISCIPLINARY STUDIES	AADHUNIK JEEVAN SHELI SE PRADUSIT PARYAVARAN	ISSN - 2395-1079

- List of linkages/ Collaborations/ MOUs

NIL

- College Publications: Research Journal, Magazine, Newsletter

NIL

10. Human Resources (2 pages)

Highlights senior faculty and administrative appointments. Describes what new areas of activity (new courses, research areas, extracurricular activities etc.) and administrative improvements are enabled by these appointments.

Positions		Teaching Faculty				Non Teaching Faculty	Technical Staff
		Prof	Promoted Prof	Assistant Prof	Guest Faculty		
Sanctioned by UGC/ University/ State Govt/ Out Source	Principal						
	01	02	00	16	NIL	13	04
<i>Filled</i>	00	00	00	06	12	06	
Sanctioned by Management/ Janbhagidari Samiti/ Other authority/	00	00	00	00	00	00	01(JBS)
<i>Filled</i>		00	00	00	00	00	00

1. Faculty and Administrative appointments: Teaching and Non-teaching

2. Guest Faculty: subject-wise appointments

S.no.	Name of the Guest Faculty	Qualification	Subject
01	Dr. P.S. SAHU	M.Sc. Ph.D	BOTANY
02	SHRI VIRENDRA SAKET	M.Sc.	CHEMISTRY
03	Dr. VIMAL KAUSHLE	M.A. Ph.D.	ECONOMICS
04	Dr. RASHMI TIWARI	M.A. Ph.D.	ECONOMICS
05	Ku. SARITA SHAH	M.A. M.Phil	ECONOMICS
06	Dr. BHAGWAT PRASAD JHARIYA	M.A. Ph.D.	HINDI
07	SHRI MANOJ KUSHWAHA	M.A.	HISTORY
08	SHRI MANISH DONGRE	M.Sc.	PHYSICS
09	SHRI PARMESH SAKET	M.Sc.	MATHEMATICS
10	Dr. MAHESH BHUPATI	M.Sc. Ph.D	ZOOLOGY
11	SMT. RASHMI MISHRA	M.Lib.	LIBRARIAN
12	SHRI SAPAN JAT	M.P.Ed.	SPORTS

3. Annual improvement in academic, research & administrative Initiatives

In the college there are a number of statutory bodies such as Executive Committee, Finance Committee, Discipline Committee and Janbhagidari Samiti that function to take decision for the development and smooth running of the institution.

The institution also fosters the students to prepare them for social, cultural and ethical trends. Cultural and sports programmes are also being organized according to the academic calendar of the university. The students also participate in various types of sport activities at local, district and university level and have provided recognition and glory to the college.

11. Events and Initiatives (5 pages)

Describes major events including seminars, conferences, competitions, student study trips etc. Focuses on what was achieved and learned, and how the college will follow up.

Describes significant academic, administrative, student support, fundraising, and other initiatives over the past year. The description of each initiative will be structured around the need for the initiative, how it was designed, what resources were used, what results were achieved, and which features of the initiative drove success.

Blood Donation, NSS Camp, Geographical Tour, Participation in seminars & Conferences by faculty members & students been done enhancing the quality of curricular and extra curricular activities.

12. Placement Report (3 pages)

Describes the college's placement cell activities, placement rate and salary statistics, and lists major employers and sectors of employment (disaggregated by gender and course studied). Profiles successful alumni and identifies emerging placement trends.

Activities of Placement Cell

S.no.	Name of the activity	Name of the Resource Person/ agency	Date & Duration
nil	nil	nil	nil

Placement Details

S.no.	No. of Students Selected	List of employers/companies	Salary Package

Alumni Profile

S.no.	Name of Alumni	Employment status	Name of the organisation

13. Innovations and Best Practices

Certain innovations have been introduced which have been made a constructive impact on the functioning of the college. The prominent amongst them are:

1. continuous comprehensive evaluation of students is ensured during the academic session.
2. feedback of students is obtained for taking any policy decision.
3. Each and every student is made to understand the virtues of a democratic setup.
4. Organizing Awareness Campaigns / Rally on various issues related to social/community development.
5. Each day the students express their opinions under the "Aaj ka Vichar" (Thought of the Day) column on the notice boards. This exercise helps the students to improve their hand writing and they become acquainted with new thoughts which inspire their future.

14.SWOC Analysis (strength , weaknesses, Opportunity and Challenges

Strength	-	Increase in admission ratio .
Weaknesses,	-	shortage of staff.
Opportunity	-	Enough Campus area, Research.
Challenges	-	Establishment of Hostels (Boys & Girls), Purchasing of Modern Equipments

15.Looking Ahead (3 pages) Future Plans

Lays out the college's priorities and goals over the coming year. Describes key initiatives planned, what each initiative is expected to achieve, and how it will contribute to the college's long term development.

Key Initiatives Planned/ implemented

S. No	Head (administrative/ academic, etc)	Nature of proposal	Expected Outcome
01	M.L.A. FUND	Purchasing of furniture's	Shortage of furniture's solved
02	JANBHAGIDARI SAMITI	Proposal for Toilet (Girls) sent to Jila Yojna Samiti	Safety for Girls Students

16. Appendix: Institutional Performance Data and Financial Reports

Provides key data on the institution and its performance, including achievement against strategic plan targets and financial reports. This section is mandatory. All data fields must be completed, in the format and as per the instructions attached.

Part II

Appendix: Institutional Performance Data and Financial Reports (all part II data kindly fill in attached excel sheet)

1. Sanctioned seats and enrolment

(a) Sanctioned Seats					
	SC	ST	Other Reserved Categories	General	Total
Undergraduate					320
Postgraduate					60
PhD					N/A

Data Source: AISHE

(b) Enrolment							
		Undergraduate			Postgraduate		PhD
		Year 1	Year 2	Year 3	Year 1	Year 2	
SC	Male	39	15	21	00	01	N/A
	Female	20	09	07	01	01	N/A
ST	Male	75	48	41	07	00	N/A
	Female	58	29	33	00	04	N/A
Other Reserved Categories	Male	41	27	21	05	02	N/A
	Female	42	23	19	02	02	N/A
General	Male	11	02	07	01	00	N/A
	Female	11	08	06	00	00	N/A
Total	Male	166	92	90	13	03	N/A
	Female	131	69	65	03	07	N/A

Number of sanctioned seats by discipline group and enrolment in the 1 st year as on September 30 th [current year]				
Discipline Group	Undergraduate		Postgraduate	
	Sanctioned Seats	Enrolment	Sanctioned Seats	Enrolment
Arts	175	166	60	16
Science	145	131	N/A	N/A

2. Transition and on-time graduation

(a) Transition from the 1st year to the 2nd year (Undergraduate)				
		Number of students admitted to the 1 st year in [the previous academic year] (*)	Of (*), the number of students currently enrolled in the 2 nd year who:	
			Passed all subjects in the 1 st year	Were Allowed to Keep Terms
SC	Male	39	18	16
	Female	20	16	04
ST	Male	75	43	16
	Female	58	39	15
Other Reserved Categories	Male	41	15	22
	Female	42	31	08
General	Male	11	06	01
	Female	11	08	03
Total	Male	166	82	55
	Female	131	94	31

Data Source: AISHE, examination results declared by [affiliating university/autonomous college]

(a) Transition from the 1st year to the 2nd year (Postgraduate)				
		Number of students admitted to the 1 st year in [the previous academic year] (*)	Of (*), the number of students currently enrolled in the 2 nd year who:	
			Passed all subjects in the 1 st year	Were Allowed to Keep Terms
SC	Male	00	00	00
	Female	01	01	00
ST	Male	07	05	01
	Female	02	01	00
Other Reserved Categories	Male	05	04	00
	Female	02	01	00
General	Male	01	01	00
	Female	00	00	00
Total	Male	13	10	01
	Female	03	02	00

Data Source: AISHE, examination results declared by [affiliating university/autonomous college]

(b) On-time graduation (Undergraduate)			
		Number of students admitted to the 1st year in [year t-3] (*)	Of (*), the number of students who passed all final year examinations for the previous academic year
SC	Male	30	13
	Female	09	06
ST	Male	61	27
	Female	39	17
Other Reserved Categories	Male	38	13
	Female	23	16
General	Male	09	02
	Female	08	04
Total	Male	138	55
	Female	79	43

Data Source: AISHE, examination results declared by [affiliating university/autonomous college]

(b) On-time graduation (Postgraduate)			
		Number of students admitted to the 1st year in [year t-2] (*)	Of (*), the number of students who passed all final year examinations in the current year
SC	Male	01	01
	Female	01	00
ST	Male	00	00
	Female	04	02
Other Reserved Categories	Male	02	02
	Female	02	02
General	Male	00	00
	Female	00	00
Total	Male	03	03
	Female	07	04

Data Source: AISHE, examination results declared by [affiliating university/autonomous college]

3. Faculty and administrative staff in position and training

(a) Faculty and administrative staff in position as on 30th September, [current year]							
		Reserved					Unreserved
		SC	ST	MP Residents	Females	Others	
Assistant Professor	Sanctioned						
	Filled (Regular)	01	04	06	01	00	01
	Filled (Contract)	nil	nil	nil	nil	nil	nil
	Guest Lecturers	07	00	07	03	03	02
Professor	Sanctioned						
	Filled (Regular)	nil	nil	nil	nil	nil	nil
	Filled (Contract)	nil	nil	nil	nil	nil	nil
	Guest Lecturers	nil	nil	nil	nil	nil	nil

Data Source: AISHE

(b) Training of faculty and administrative staff between October 1st [previous year] to September 30th [current year]				
		Leadership and management training	Training in the area of academic specialisation	Other training
Assistant Professor	Number trained	nil	nil	nil
	Avg. number of days	nil	nil	nil
Professor	Number trained	nil	nil	nil
	Avg. number of days	nil	nil	nil
Administrative Staff (all)	Number trained		N/A	
	Avg. number of days		N/A	
Accountant	Number trained		N/A	
	Avg. number of days		N/A	

Data Source: Compiled from training certificates submitted by faculty/administrative staff

(c) Faculty qualifications as on 30th September, [Current Year]					
		PhD	Postgraduate	Undergraduate	Others
Assistant Professor	Regular	02	05	N/A	nil
	Contract	nil	nil	nil	nil
	Guest Lecturers	06	02	N/A	N/A
Professor	Regular	N/A	N/A	N/A	N/A
	Contract	N/A	N/A	N/A	N/A
	Guest Lecturers	01	01	N/A	nil

Data Source: AISHE

4. Student support services

(a) Financial support received (from all sources) by students in the college between October 1 st [previous year] to September 30 th [current year]							
		Undergraduate		Postgraduate		PhD	
		Number	Average Value (Rs.)	Number	Average Value (Rs.)	Number	Average Value (Rs.)
SC	Male	71	554095	01	12244	N/A	N/A
	Female	37	288754	01	9854	N/A	N/A
ST	Male	153	1213739	07	68978	N/A	N/A
	Female	115	912287	04	48976	N/A	N/A
OBC	Male	80	475235	06	38104	N/A	N/A
	Female	71	421771	04	26566	N/A	N/A
Total	Male	304	2243069	14	119326	N/A	N/A
	Female	223	1622812	09	85396	N/A	N/A

Data Source: AISHE

(a) Financial support received, from the DHE, by students in the college between October 1 st [previous year] to September 30 th [current year]							
		Undergraduate		Postgraduate		PhD	
		Number	Average Value (Rs.)	Number	Average Value (Rs.)	Number	Average Value (Rs.)
SC	Male	52	104000	01	2000	N/A	N/A
	Female	23	46000	01	2000	N/A	N/A
ST	Male	129	258000	07	14000	N/A	N/A
	Female	80	160000	04	8000	N/A	N/A
General	Male	00	00	00	00	N/A	N/A
	Female	00	00	00	00	N/A	N/A
Total	Male	181	362000	08	16000	N/A	N/A
	Female	103	206000	05	10000	N/A	N/A

Data Source: College records, DHE

(b) Hostel occupancy as on 30 th September, [Current Year] (all hostels)		
Capacity	Number of residents	
Males:		
Females:		
SC	Male	N/A
	Female	N/A
ST	Male	N/A
	Female	N/A
General	Male	N/A
	Female	N/A
Total	Male	N/A
	Female	N/A

Data Source: Hostel register verified against fee receipts on record

(c) Hostel occupancy as on 30 th September, [Current Year] (girls only hostels opened after _____)	
Capacity	Number of residents
SC	nil
ST	nil
General	nil
Total	nil

Data Source: Hostel register verified against fee receipts on record

5. Examination Results

(a) Examination results for [previous academic year] (undergraduate)											
		SC		ST		Other Reserved Categories		General		Total	
		M	F	M	F	M	F	M	F	M	F
1 st year	Appeared	24	14	48	38	43	26	03	03	118	81
	1 st division	01	00	02	03	02	02	00	01	05	06
	2 nd Division	12	08	030	21	18	10	01	02	61	41
	3 rd Division	00	0	00	0	0	0	0	0	0	0
2 nd year	Appeared	23	07	41	32	19	19	08	06	91	64
	1 st division	00	00	01	02	02	07	01	01	04	10
	2 nd Division	16	06	30	23	13	10	04	05	63	44
	3 rd Division	02	01	03	02	01	0	0	0	06	03
3 rd year	Appeared	03	04	018	09	03	02	01	03	25	18
	1 st division	000	0	00	0	00	0	0	0	0	0
	2 nd Division	.0	00	04	02	01	01	00	00	05	03
	3 rd Division	00	00	00	00	00	00	00	00	00	00

Data Source: AISHE, Examination results declared by [affiliating university/autonomous college]

(a) Examination results for [previous academic year] (postgraduate)											
		SC		ST		Other Reserved Categories		General		Total	
		M	F	M	F	M	F	M	F	M	F
1st year	Appeared	01	00	00	04	02	02	00	00	03	06
	1 st division	00	00	00	00	01	02	00	00	01	02
	2 nd Division	01	00	01	03	00	00	00	00	02	03
	3 rd Division	00	00	00	00	00	00	00	00	00	00
2nd year	Appeared	02	00	00	04	01	00	00	00	03	04
	1 st division	02	00	00	03	01	00	00	00	03	03
	2 nd Division	00	00	00	00	00	00	00	00	00	00
	3 rd Division	00	00	00	00	00	00	0	0	0	0

Data Source: AISHE, Examination results declared by [affiliating university/autonomous college]

6. Placement and student tracking

(a) Placement and Tracking of Students who graduated in [previous academic year] (Undergraduate)						
		Number of students who graduated in [the previous academic year] (*)	Of (*), the number of students who were successfully tracked and are:			
			Employed/ Self-employed	In education/ training	Unemployed	Not in the labour force
SC	Male	nil	nil	nil	nil	nil
	Female	nil	nil	nil	nil	nil
ST	Male	nil	nil	nil	nil	nil
	Female	nil	nil	nil	nil	nil
General	Male	nil	nil	nil	nil	nil
	Female	nil	nil	nil	nil	nil
Total	Male	nil	nil	nil	nil	nil
	Female	nil	nil	nil	nil	nil

Data Source: Records of the college placement cell

(b) Placement and Tracking of Students who graduated in [previous academic year] (Postgraduate)						
		Number of students who graduated in [the previous academic year] (*)	Of (*), the number of students who were successfully tracked and are:			
			Employed/ Self-employed	In education/ training	Unemployed	Not in the labour force
SC	Male	nil	nil	nil	nil	nil
	Female	nil	nil	nil	nil	nil
ST	Male	nil	nil	nil	nil	nil
	Female	nil	nil	nil	nil	nil
General	Male	nil	nil	nil	nil	nil
	Female	nil	nil	nil	nil	nil
Total	Male	nil	nil	nil	nil	nil
	Female	nil	nil	nil	nil	nil

Data Source: Records of the college placement cell

7. PhDs Awarded

Number of PhDs awarded between October 1st [previous year] to September 30th [current year]	
Discipline Group	Number
Arts	nil
Science	nil
All disciplines	

Data Source: AISHE

8. Research and consultancy

Revenue generated through externally funded research and consultancies over [previous financial year]		
Discipline Group	Number of active projects	Total Revenue Generated (Rs. lakhs)
Arts	01	150000
Science	00	00
All disciplines		

Data Source: College/university records

Number of papers published in peer-reviewed journals between October 1 st [previous year] to September 30 th [current year]			
Discipline Group	Number of papers published		Number of published papers through cross-institute research collaboration
	International Journals	National Journals	
Arts	03	00	00
Science	00	00	00
All disciplines			

Date Source: College records based on published papers submitted by faculty

9. NAAC accreditation and UGC autonomy

	Date of Application (LOI & SSR submitted)	Date on which accreditation was received	Grade	Valid till
1 st Cycle	Loi Date - 26-11-2016	rejected		
2 nd Cycle				
3 rd Cycle				

Date of submission of the Annual Quality Assurance Report for the current year: ___nil___.

Does the college have currently valid UGC autonomy? _____No_____. If yes, by order number _____, dated _____.

10. Institutional Trends

Variable	Baseline Value	[Year 1]	[Year 2]	[Year 3]	[Year 4]	Current Year
Percentage of sanctioned seats in the 1 st year filled (undergraduate, all categories)	100%	100%	83.46 %	95.69 %	94.69 %	88.11 %
Percentage of sanctioned seats in the 1 st year filled (postgraduate, all categories)	80%	15%	28.33 %	16.66 %	26.66 %	80%
Transition rate from the 1 st year to the 2 nd year (undergraduate, all categories)	100%	87.95 %	92.3%	75%	78.34 %	92.98
On-time graduation rate (undergraduate, all categories)	50%	48.88	46.78	44.87	10%	44.70 %
Transition rate from the 1 st year to the 2 nd year (post graduate, all	90%	100%	66.6%	64.70 %	90.90 %	81.25 %

categories)						
On-time graduation rate (postgraduate, all categories)	80%	75%	71.42 %	77.71 %	81.81 %	80%
Regular faculty in position rate (all levels, reserved categories)	100%	90.9%	62.5%	62.5%	62.5%	75%
Regular faculty in position rate (all levels, unreserved categories)	100%	18.18 %	12.5%	12.5%	12.5%	12.5%
Percentage of regular faculty with PhDs (all levels)	-	nil	16.66 %	33.3%	33.3%	33.3%
Employment rate of graduates from the previous academic year (undergraduate, all categories)	NO TRACKING RECORD					
Employment rate of graduates from the previous academic year (postgraduate, all categories)	NO TRACKING RECORD					
Percentage of total revenue generated through externally funded research	NIL	NIL	NIL	NIL	0.2	NIL
Number of papers published in peer-reviewed, international journals	_	01	02	02	03	04

Source: Tables under section 1-8.

11. Financial Reports

Name and registration number of the auditor _____ 001117C _____.

Number of audit observations recorded by the auditor _____.

Number of audit responses found satisfactory, as certified by the project directorate _____.

Certified audit reports as per the standard Chart of Accounts to be attached.

12. All India Survey of Higher Education

Date on which all applicable fields of the Data Collection Format for the All India Survey of Higher Education were completed and submitted _14-03-2017

Instructions

- All data is to be reported as on 30th September of the current year.
- Postgraduate courses refer to courses at the Masters and MPhil level.
- The number of sanctioned seats is the number of students the college is authorized, by the UGC/DHE/affiliating University, to admit in the first year of its degree programs.
- The number of sanctioned faculty posts is the number of faculty the college is authorized, by the UGC/DHE/affiliating University, to recruit on a full-time basis.
- Enrolment is defined as the number of students who have paid their admission fees for joining a degree program by September 30 of the respective academic year.
- Admission is defined as the number of students who have paid their admission fees for joining a degree program, in the first year, by September 30 of the respective academic year and who have never been enrolled in that degree program previously.
- Other Reserved Categories include all categories of students (for e.g. sports quota, extracurricular quota, residents of Jammu and Kashmir etc.) for whom a fixed percentage of sanctioned seats are reserved.
- Examination results are to be reported for examinations held in the previous academic year, and the results for which were declared by 30th September of the current year.
- Allowed to keep terms refers to students who did not pass all subjects in the previous year but were allowed to transition to the next year of their respective degree programs.
- Regular faculty refers to faculty employed on open-ended, full-time contracts as per UGC norms.
- Contract faculty refers to faculty employed on fixed term, full-time contracts as per UGC norms.
- Guest Lecturers refers to faculty employed on a per lecture or per day basis as per UGC norms.
- Data on scholarships is to be reported on all scholarships awarded between 1st October of the previous year and 30th September of the current year.
- A hostel seat is considered occupied if a student has been allotted a seat in the hostel and the student, to whom the seat was allotted, has paid the hostel fee for the current academic year.
- Examination results refers to the average score obtained by a student, in the respective academic year, across all exams that are used to assess whether the student has met the requirement of the degree program in which he/she is enrolled.
- Student tracking refers to having up to date contact information (mobile phone and/or email address) and status (employment, unemployed, in formal education or training, not in the labour market/other) for each student for up to six from the end of the academic year when the student passed out (graduated).
- Externally funded research and consultancies refer to research and/or development funded through consultancy contracts or partnerships with a sponsor or purchaser who is external to the institution.
- A peer-reviewed journal is one that subjects an author's research to review and evaluation by others who are experts in the same field, before the research is published.

- An international journal is one that has an International Standard Serial Number (ISSN) issued by the ISSN International Centre.
- A paper is said to be published through cross-institute research collaboration if the primary affiliation of at least two authors is to different colleges/institutions.
- The institutional performance indicators common across all institutions can be found in the PIP. Institution-specific performance indicators can be found in the MOU signed between the Institution and the Department of Higher Education.
- The standard Chart of Accounts refers to the standard format for audit reports as notified by the Department of Higher Education through its orders.