

# Government LSGK College, Pohari, Shivpuri (Madhya Pradesh)

## Annual Report 2017-18

This format outlines the annual reports to be published by all colleges in the Madhya Pradesh on their websites, by October 31<sup>st</sup> of each year. Part I is intended as a guide and colleges are free to alter the contents and format as they see fit. Part II, the Appendix (Institutional Performance Data and Financial Reports), is mandatory and colleges are required to report all data as per the attached format and instructions.

### Important Information –

- Name of the college -: Govt. LSGK College, Pohari, Shivpuri (M.P.)
- Place of the college -: Pohari
- District -: Shivpuri
- Division -: Gwalior
- Year of establishment of college -: 1987
- Name and contact details ( Mail id , Phone ) of Principal -: Prof. Gopal singh Gil 7566551166, Mail- ID= lsgkcollegepohari@gmail.com
- Name , Post and contact details of ( mail id, Phone no.) of Reporting In charge Prof. Laxmi Gupta, Assistant Professor , 9425727381, lsgkcollegepohari@gmail.com
- Date of report submission -: 2019

### Part I

- 1. The Principal's Report (2 pages)-** Highlights the key activities, events, and successes of the past year and briefly describes major new initiatives to be undertaken over the next year.

Government LSGK College, Pohari is affiliated to Jiwaji University, Gwalior was started in 1987 to cater the educational need of the rural surrounding of Pohari block, a historical place related to the many freedom fighters they used to make plans to get the freedom from the british rule. Though it has many institutions at secondary level including ITI and model school at nearby place, it was lacking in higher educational institution. Keeping in mind the importance of higher education among students. The admission process started in 1987 and in the very first year 100 students took admission. The number of seats is limited to 100 and it offers only undergraduate course in Arts stream. The College was granted 4 hectares of land near main choraha pohari. The Govt. of M.P. for its building three years ago granted 1.74 crores rs. Now it had been completed.

The college has made a good beginning and the number of admission aspirants subsequently grew larger reaching up to three hundred for its hundred and ten seats. It has aspired to fill the coveted academic need of poor and backward classes as almost 90% students of the college are from weaker sections and most of them are girls. The college has borrowed its motto from famous Upanishad 'Asato Ma Sadagamaya' to keep away from dark to light and accordingly the college aims to impart quality education and ensures that each students should give his/her best to the world.

## 2. Overview (1 page)

(i) Vision, Mission and Objectives of the college

Vision :-

1. To provide equity and access of Higher Education to all sections of society.
2. To achieve academic excellence and empowerment through education.
3. To create an inspirational and experiential learning environment for its stakeholders.

Mission - To provide modern, technological and computer education to students.

Objectives - To provide qualitative Education and other facilities which benefited to the Students with the different plans of Govt. of M.P.

(ii) Brief introduction of the college (including the status (Govt. / Lead/ Constituent/ Affiliated/ Private), Parent University, UGC recognition, CPE status, etc), location & campus area

Govt. LSGK College Pohari Shivpuri is an old college was taken over by State Govt. in 1987. This college was run by an association named Adarsh Seva Sangh Pohari. to cater and fulfill the need of higher education in this rural surrounding. The college is affiliated to Jiwaji University Gwalior and it has abundance possibility to develop as an advance institution. The campus of the college is very wide. It has 12 bigha land near bus stand.

(iii) History of the college with significant milestones

Govt. LSGK College Pohari, Shivpuri, was taken over by the Government in 1987. The admission started in 1987. The College is very ancient it was run by the commette named Aders Seva Samiti Pohari. It's Chairman was Mr. Harishanakar Dwivedi . Mr. Gopal Krishana Puranik was very learned scholar and social reformer. He was also acted as Chairman of Adars Seva Sangh Pohari. He donated 12 Bigha land to the Government for the Collegege. This college is providing Highrer Education sience 1987. Many students after graduation got many Government Jobs in the different fields. and presently it has about 367 students. The number of admission aspirant is very high as in academic year 2018-19 it was about 800 for its 110 seats. Honourable MLA Mr. Prahlad Bharti demanded Budget for new building and it was granted in 2013. Now the college is runing in it's own new building.

(iv) Faculties and major discipline

## 3. Senior Management Team and Board of Governors (1 page)

Lists the members of the senior management team (Principal, Registrar, Deans etc.) and members of the Board of Governors including their designations and professional backgrounds.

## List of College faculty Member's

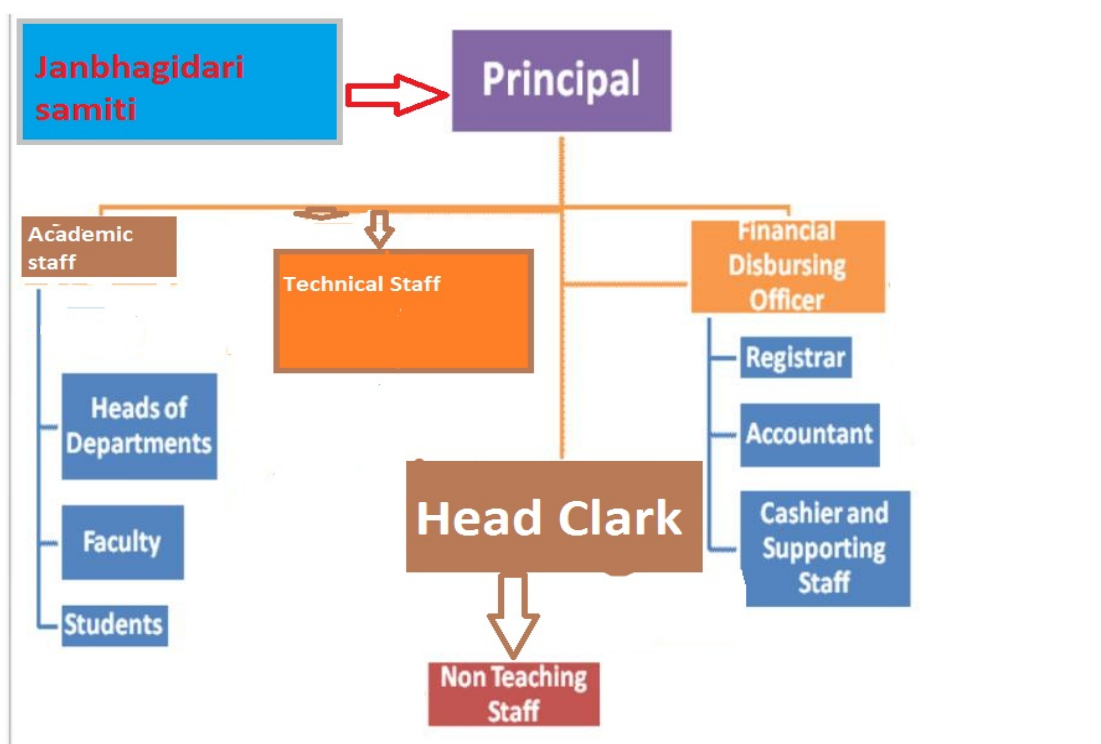
1. Principal : Prof. Gopal singh Gill

Department	Name of Faculty	Qualification
English	Prof. G.S. Gill	M.A.
Chemistry	Dr. Anand prakash Gupta	Ph.D
Sociology	Prof. Laxmi Gupta	M.A.
Economics	Dr. Sachin Gouri	Ph.D
Hindi	Dr. Dharmendra Sharma	Ph.D
Political Science	Dr. Dipali Mishra	Ph.D
Sanskrit	Dr.Rani Baghel	Ph.D
Mathematics	Dr. Smita Sharma	Ph.D
Librarian	Shri Mahesh Kumar Jain	B.Lib.

## List of Class IV Employees Staff.

S.No.	Name	Post
1	Shri Satish Kushwaha	Computer Operoter
2	Shri Kesav Kushwaha	Watchman

## Administrative Hierarchy



List of Chairperson/members of Statutory Bodies like Board of Governors/  
Executive Committee/ Academic Council/ Janbhagidari Samiti, etc  
Janbhagidari Samiti :- (Management Body)

S.No.	Name	Post
1	Mukesh singh (SDM)	President
2	Prof. G.S. Gill	Secretary

#### 4. Admission Statistics (1 page)

- The number of applicants at the UG level who ranked the college as their 1<sup>st</sup>, 2<sup>nd</sup> and 3<sup>rd</sup> preference and the number of students admitted at each level as per the following format.

Applications	UG	PG
Applications that ranked the college as the 1 <sup>st</sup> preference	193	10
Applications that ranked the college as the 2 <sup>nd</sup> preference	67	7
Applications that ranked the college as the 3 <sup>rd</sup> preference	70	12
Total number of applications received	330	29
Number of students admitted	143	30

Data Source: E-pravesh portal, records of the affiliating univers

- A brief demographic profile of students admitted (in terms of gender, caste, whether from MP etc.)

Name of the Course		Gender	Category	% of students from the State	% of students from other states
UG Course	PG Course	M	Gen.	100	Nil
		F	Gen.	100	Nil
		M	OBC	100	Nil
		F	OBC	100	Nil
		M	SC	100	Nil
		F	SC	100	Nil
		M	ST	100	Nil
		F	ST	100	Nil

#### 5. Academic Programs: Core Programs - UG

### Core programs at UG level

Stream	Name of the Core Program	Eligibility	Optional subjects
Arts/science	Bachelor of Arts and science	10+2 from a recognized Board or 10+2 with relevant vocational/practical course from M.P. Board	Foundation course + a group of 3 optional subjects

### 6 Academic Programs: Core Programs - PG

#### Core programs at PG level

Stream	Name of the Core Program	Eligibility	Optional subjects
Arts	Master of Arts	Graduation from a recognized university or Graduation with relevant vocational course from university	Optional and compulsory subjects

### 1. Academic Calendar 2018-19

Academic Work	First Year / Second Year/ third Year	PG First / Second/ third/ fourth semester
Orientation Classes/Zero Classes/SWOTanalysis	Zero classes from 01 July to 15 July then regular classes	Zero classes from 01 July to 15 July then regular classes
Teaching and Continuous Comprehensive Evaluation	One CCE in each course	One CCE in each course
CCE Schedule	In the month of September and October	In the month of September and October
Preparation Leave	2 month Yearly break	15 days samester break
Yearly and supplementary Exams	As per University Time Table	As per University Time Table
Declaration of Examination Results	june. and Aug.	January- feb./ july- Aug.

### 2. The Student Experience (4 pages)

Briefly describes students' life in the college:

- Infrastructural facilities available to students – Classrooms, Garden, Students' common room, Sports ground & other facilities
- Library as a learning resource- advisory committee, its composition, facilities & services, annual improvement initiatives

The college is well connected with the roads. It is situated near the Bus stand so the students reach very easily to the college. The atmosphere of the college campus is very fine. There is also an NSS unite of 50 students run by the college and controlled by Jiwaji University Gwalior. Students get B and C certificates. It is only college in the rural area which is providing Higher Education to the students of the all sections without any

- Library as a learning resource-advisory committee, its composition, facilities & services (e & print), annual improvement initiatives

At present the college has a big library. With Reading Room. Wi-Fi Facility is also available to students. Students are provided various newspapers and magazines. SC and ST students are provided books and stationary out of Govt. fund.

- Student support services:
- ✓ IT enabled services

One Library with Reading Room is available for the benefit of students in the college campus. For SC & ST students, study material along with stationary is provided every year out of Government fund. The college provides Wi-Fi service to all its students.

Financial assistance (scholarships/ schemes for SC/ST/OBC/ Minority, Gro & Health Insurance Schemes)

- ✓ Personal enhancement & development schemes- NCC, NSS, Facilities for physically challenged & slow learners; Tutor-Guardian Scheme, Grievance Redressal Cell, Entrepreneurship Cell, Remedial classes, Career Guidance Cell.

✓

The college provides various kinds of scholarships and schemes to Sc/St/OBC and Minority students. It provides help especially to girl students through its scheme Gaon Ki Beti Yojana. The college provides help to SC/ST students through Post Metric Scholarships. Those SC/ST students who are out of the town are provided rental help for living in the town through Awas Yojana. Those students who are brilliant but poor are provided free of cost education through MMVY/MMJKY scheme. Besides these, various other schemes are also provided to the needy and weaker sections of students.

Tutor- Guardian Scheme is also have in College and there is a Grievance Redressal Cell. There is a Sawami Vivikanand Career Guidance Cell and Personality Development Cell to provide help to students. There is also a discipline committee and anti ragging committee.

- ✓ Extracurricular activities: Calendar of activities (Sports, Youth Festival, cultural and literary events), Achievements, Awards

The college organises various cultural and literary events. Youth Festival is celebrated with great enthusiasm and fervour by the students in the month of September and October. Various sports activities are also organised in the college. Students and teachers participate and organise these celebrations with great zeal and happiness. The students of NSS also organise different activities. Many Government policies were popularise by the volunteers for the sake of society. The students to participate in the NSS camp also get certificates.

- ✓ Major student welfare initiatives over the past year

Online fees structure has developed for convenience of students. All the schemes and scholarships have been provided online. Ramp facility is also provided for handicapped students in the building. For the SC and ST students free study material has been provided.

Page :- 06

- Extension Activities

The college manages to provide various kinds of jobs oriented lectures and motivate students to participate in various programmes of jobs and personality development. The college has a vast playground. It has ample toilet facility specially to fulfil the need of girls students.

### 3. Student Achievements (5 pages)

Highlights the most significant academic and non-academic achievements of students over the past year. This can include major academic awards and scholarships received student research, and sports and other extracurricular activities. Focuses, in particular, on profiling top achievers and describing how resources provided by the college helped these students succeed.

#### ACADEMIC

- Merit

S.no	Name of the award/ medal/ meritorious scholarship	Name of the recipient	Class	Area of achievement
1	NIL	NIL	NIL	NIL

- Research scholarship/ award

S.no	Name of the scholarship award/	Name of the recipient	Class	Area of research
	NIL	NIL	NIL	NIL

#### CULTURAL

- Participation

S.no	Name of the event	District Level	State Level	University	National Level
1	NIL	NIL	NIL	NIL	NIL

- Awards and Achievements

#### SPORTS

- Participation

S.no	Name of the event	Division Level	State Level	University/ National Level	International Level
1	Volley ball M	03	Nil	Nil	Nil

- Awards and Achievements

Name of the student	Class	Sport	Award/Achievement
Nil			

#### 4. Research Activities (4 pages)

Identifies major research themes, places these themes in their social and economic context, highlights major research achievements (publications, collaborations, intellectual property produced, external funding received etc.), and profiles top researchers. Lays out the research agenda and identifies themes for the coming year.

- Major research themes

S. No.	Department	Prioritized research area and expertise	Social/ economic context
1	NIL	NIL	NIL

- Major/Minor research projects

S. No	Name of the Faculty	Year	Title of the project	Name of funding Agency/ Industry	Total grant received
1	NIL	NIL	NIL	NIL	NIL

- Papers presented in regional, national and international seminars/ conferences

S. No.	Name of the faculty	Regional/ State	National	International
1	Prof. Laxmi Gupta		02	

- Publications in national/ international journals

S.No.	Name of the faculty	Name of the journal	Title of the paper	ISSN/ ISBN number /Impact factor
1	NIL	NIL	NIL	NIL

- List of linkages/ Collaborations/ MOUs



Nil

- College Publications: Research Journal, Magazine, Newsletter

NIL

## 5. Human Resources (2 pages)

Highlights senior faculty and administrative appointments. Describes what new areas of activity (new courses, research areas, extracurricular activities etc.) and administrative improvements are enabled by these appointments.

### 1. Faculty and Administrative appointments: Teaching and Non-teaching

Positions	Teaching Faculty				Non Teaching Faculty	Technical Staff
	Prof 00	Promoted Prof 00	Assistant Prof 14	Guest Faculty		
Sanctioned by UGC/ University/ State Govt	Prof 00	Promoted Prof 00	Assistant Prof 14	Guest Faculty	10	00
<i>Filled</i>	Nil	00	03	05	01	00
Sanctioned by Management/ Janbhagidari Samiti/ Other authority	Nil	Nil	Nil	00		
<i>Filled</i>	Nil	Nil	Nil	00		

### 2. Guest Faculty: subject-wise appointments

S.no.	Name of the Guest Faculty	Qualification	Subject
1	Dr. Sachin Gouri	Ph.D.	Economics
2	Dr. Depalli Mishara	Ph.D.	Political Science
3	Dr. Dharmendra Sharma	Ph.D.	Hindi
4	Smt. Rani Baghel	Ph.D	Sanskrit
5	Dr. Smita Sharma	Ph.D.	Math

### 3. Annual improvement in academic, research & administrative Initiatives

The college has held regular classes and emphasised has been made to the all students should pass in first attempt. Students have been motivated and inspired to attend classes regularly. They have been provided good furniture, neat and clean atmosphere, inspiring academic ambience. The students were motivated to follow self discipline. All their grievances and problems have been solved promptly. There is also discipline, anti-ragging committees who control the administration of the college. The students study very freely without any tension.

## 11-Events and Initiatives (5 pages)

Describes major events including seminars, conferences, competitions, student study trips etc. Focuses on what was achieved and learned, and how the college will follow up.

Describes significant academic, administrative, student support, fund raising, and other initiatives over the past year. The description of each initiative will be structured around the need for the initiative, how it was designed, what resources were used, what results were achieved, and which features of the initiative drove success.

Janbhagidari Samiti collect the fund from outsources for the development.

### 6. Institutional Development plan (4 pages)

Describes the college's activities over the past year under different schemes, discusses performance against strategic/institutional development plans and commitments over the previous year.

Indicator*	Baseline Value	Target for [current year]	Value as on 30 <sup>th</sup> September [current year]
Admission	On line	100%	
Schemes and Scholarships	On line	100%	
Admission Fees	On line	100%	
Water Facility	-	100%	

Role of Internal Quality Assurance Cell (IQAC) in academic audit and initiating quality assurance strategies and processes

The college has **Internal Quality Assurance Cell (IQAC)**. It helps in many decision making activities of the college.

### 7. Placement Report (3 pages)

Describes the college's placement cell activities, placement rate and salary statistics, and lists major employers and sectors of employment (disaggregated by gender and course studied). Profiles successful alumni and identifies emerging placement trends.

#### Activities of Placement Cell

S.no.	Name of the activity	Name of the Resource Person/ agency	Date & Duration
1	NIL	NIL	NIL

#### Placement Details

S.no.	No. of Students Selected	List of employers/companies	Salary Package
1	NIL	NIL	NIL

#### Alumni Profile

S.no.	Name of Alumni	Employment status	Name of the organisation
1	NIL	NIL	NIL

### 8. Innovations and Best Practices

online fees structure, Bio-metric attendance , online system of schemes and scholarships.

## 9. SWOC Analysis (strength , weaknesses, Opportunity and Challenges

### **Strength**

- It is a multidisciplinary co-education college of the block imparting quality education since 1987.
- The college has a campus of 4 hectares. The college is well connected with the roads.
- Highly qualified and competent faculties providing quality education in the College.
- The college has a girls common room with attached toilet.
- The college has a big play ground for various sports activities.
- The college provides quality education to the students who are mostly rural dwellers and most of them about 95% are belonging to SC/ST and OBC students.

### **Weakness**

- As the gross enrolment ratio (GER) is increasing day by day therefore there is a need for increase in infrastructural facilities.
- As most of the students belongs to the rural areas and their academic background is poor and they also have language problem.
- A number of teaching posts are vacant therefore there is an urgent need of recruitment of faculty.
- Teachers are over burden with a lot of non academic work.
- There is no permanent staff for official work.
- College administration should have more academic freedom to meet out the need of the students.
- The college has no drinking water facility.

### **Opportunities**

- The college provides job opportunities to deserving students through Vivekanand career guidance.
- The college urgently needs teaching and non teaching staff.
- The college takes it as a great opportunity to provide excellent and inspiring education to the rural surrounding.

### **Challenges**

- Posting and recruitments of faculty against vacant posts. Sport facilities needed.
- Of more infrastructures like class rooms, laboratories and other facilities for increasing number of students.
- More attention is required for maintenance of infrastructure.
- ICT facilities should be increased in college campus.
- To improve communication skill among the students. An English language lab should be set up in the college.

Lays out the college's priorities and goals over the coming year. Describes key initiatives planned, what each initiative is expected to achieve, and how it will contribute to the college's long term development.

### Key Initiatives Planned/ implemented

S. No	Head (administrative/ academic, etc)	Nature of proposal	Expected Outcome

1	Science Graduate	B.Sc Class & PG Classes	100%
2	Sport complex	All students	100%

## 17. Appendix: Institutional Performance Data and Financial Reports

Provides key data on the institution and its performance, including achievement against strategic plan targets and financial reports. This section is mandatory. All data fields must be completed, in the format and as per the instructions attached.

### Part II

Appendix: Institutional Performance Data and Financial Reports (all part II data kindly fill in attached excel sheet )

#### 1. Sanctioned seats and enrolment

(a) Sanctioned Seats					
	SC	ST	Other Reserved Categories	General	Total
Undergraduate	20	14	31	45	110

Data Source: AISHE

(b) Enrolment						
		Undergraduate			Postgraduate	
		Year 1	Year 2	Year 3	Year 1	Year 2
SC	Male	8	22	12	01	00
	Female	12	05	07	01	00
ST	Male	11	04	01	00	00
	Female	03	00	00	00	00
Other Reserved Categories	Male	16	27	25	04	00
	Female	15	30	27	06	00
General	Male	35	06	06	08	00
	Female	10	08	15	07	00
Total	Male	<b>70</b>	<b>59</b>	<b>44</b>	<b>13</b>	00
	Female	<b>40</b>	<b>43</b>	<b>49</b>	<b>14</b>	00

Data Source: AISHE

Number of sanctioned seats by discipline group and enrolment in the 1 <sup>st</sup> year as on September 30 <sup>th</sup> [current year]				
Discipline Group	Undergraduate		Postgraduate	
	Sanctioned Seats	Sanctioned Seats	Sanctioned Seats	Enrolment
Arts	110	110	30	29

Data Source: AISHE

Page :- 12

#### 2. Transition and on-time graduation

(a) Transition from the 1 <sup>st</sup> year to the 2 <sup>nd</sup> year (Undergraduate)
--

		Number of students admitted to the 1 <sup>st</sup> year in [the previous academic year] (*)	Of (*), the number of students currently enrolled in the 2 <sup>nd</sup> year who:	
			Passed all subjects in the 1 <sup>st</sup> year	Were Allowed to Keep Terms
SC	Male	03	02	01
	Female	12	08	03
ST	Male	00	00	00
	Female	00	00	00
Other Reserved Categories	Male	35	22	10
	Female	24	13	08
General	Male	02	02	00
	Female	03	02	01
Total	Male	<b>40</b>	26	11
	Female	<b>39</b>	23	12

Data Source: AISHE, examination results declared by [affiliating university/autonomous college]

Data Source: AISHE, examination results declared by [affiliating university/autonomous college]

(b) On-time graduation (Undergraduate)			
		Number of students admitted to the 1 <sup>st</sup> year in [year t-3] (*)	Of (*), the number of students who passed all final year examinations for the previous academic year
SC	Male		
	Female	07	04
ST	Male	01	01
	Female	00	00
Other Reserved Categories	Male	18	11
	Female	09	08
General	Male	02	02
	Female	04	03
Total	Male	23	16
	Female	20	15

Data Source: AISHE, examination results declared by [affiliating university/autonomous college]

### 3. Faculty and administrative staff in position and training

(a) Faculty and administrative staff in position as on 30 <sup>th</sup> September, [current year]		
	Reserved	Unreserved

		SC	ST	MP Residents	Females	Others	
<b>Assistant Professor</b>	Sanctioned 06						
	Filled (Regular)02	01	Nil	yes	01	01	nil
	Filled (Contract)						
	Guest Lecturers 04	nil	Nil	05	03	02	nil
<b>Admin. Staff (all)</b>	Sanctioned 04						
	Filled (Regular) 00	Nil	Nil	Nil	Nil	Nil	Nil
	Filled (Contract)00	Nil	Nil	Nil	Nil	Nil	Nil
<b>Accountant</b>	Sanctioned 01						
	Filled (Regular)00	Nil	Nil	Nil	Nil	Nil	nil
	Filled (Contract) 00	nil	nil	nil	nil	nil	nil

Data Source: AISHE

<b>(b) Training of faculty and administrative staff between October 1<sup>st</sup> [previous year] to September 30<sup>th</sup> [current year]</b>				
		Leadership and management training	Training in the area of academic specialisation	Other training
<b>Assistant Professor</b>	Number trained	0	0	
	Avg. number of days	0	0	
<b>Associate Professor</b>	Number trained	0	0	
	Avg. number of days	0	0	
<b>Professor</b>	Number trained	0	0	
	Avg. number of days	0	0	
<b>Administrative Staff (all)</b>	Number trained	0	0	
	Avg. number of days	0	0	
<b>Accountant</b>	Number trained	0	0	
	Avg. number of days	0	0	

Data Source: Compiled from training certificates submitted by faculty/administrative staff

<b>(c) Faculty qualifications as on 30<sup>th</sup> September, [Current Year]</b>					
		PhD	Postgraduate	Undergraduate	Others
<b>Assistant Professor</b>	Regular	nil	02	nil	-
	Contract				
	Guest Lecturers	5	nil	Nil	-
<b>Associate Professor</b>	Regular	01	nil	Nil	nil
	Contract	nil	Nil	nil	Nil
	Guest Lecturers	nil	Nil	nil	Nil
<b>Professor</b>	Regular	nil	Nil	nil	Nil
	Contract	nil	Nil	nil	Nil
	Guest Lecturers	nil	Nil	nil	Nil

Data Source: AISHE

#### 4. Student support services

<b>(a) Financial support received (from all sources) by students in the college between October 1<sup>st</sup> [previous year] to September 30<sup>th</sup> [current year]</b>
--

		Undergraduate	
		Number	Average Value (Rs.)
SC	Male	18	7230
	Female	20	7230
ST	Male	02	6559
	Female	00	6559
GENERAL	Male	47	1723
	Female	45	6751
Total	Male	67	
	Female	65	

Data Source: AISHE

(a) Financial support received, from the DHE, by students in the college between October 1 <sup>st</sup> [previous year] to September 30 <sup>th</sup> [current year]			
		Undergraduate	
		Number	Average Value (Rs.)
SC	Male		
	Female		
ST	Male		
	Female		
General	Male	47	1723
	Female	45	6751
Total	Male	67	
	Female	65	

Data Source: College records, DHE

(b) Hostel occupancy as on 30 <sup>th</sup> September, [Current Year] (all hostels)			
Capacity NO Hostel		Number of residents	
Males:			
Females:			
SC	Male	00	
	Female	00	
ST	Male	00	
	Female	00	
General	Male	00	
	Female	00	
Total	Male		
	Female		

Data Source: Hostel register verified against fee receipts on record

(c) Hostel occupancy as on 30 <sup>th</sup> September, [Current Year] (girls only hostels opened after _____)	
Capacity	Number of residents

SC	Nil
ST	Nil
General	Nil
Total	Nil

Data Source: Hostel register verified against fee receipts on recor

5. Examination Results

<b>(a) Examination results for [previous academic year] (undergraduate)</b>											
		SC		ST		Other Reserved Categories		General		Total	
		M	F	M	F	M	F	M	F	M	F
<b>1<sup>st</sup> year</b>	Appeared	04	05	01	00	20	07	3	03	28	15
	1 <sup>st</sup> division										
	2 <sup>nd</sup> Division	Division Not Awarded In Ist Year									
	3 <sup>rd</sup> Division										
<b>2<sup>nd</sup> year</b>	Appeared	02	06	01	00	15	08	02	04	20	18
	1 <sup>st</sup> division										
	2 <sup>nd</sup> Division	Division Not Awarded In Ist Year									
	3 <sup>rd</sup> Division										
<b>3<sup>rd</sup> year</b>	Appeared	02	04	01	00	11	08	02	03	16	15
	1 <sup>st</sup> division	00	01	00	Nil	04	03	00	01	04	05
	2 <sup>nd</sup> Division	01	02	01	00	05	04	01	01	08	07
	3 <sup>rd</sup> Division	01	01	00	00	02	01	01	01	04	03

Data Source: AISHE, Examination results declared by [affiliating university/autonomous college]

<b>(a) Examination results for [previous academic year] (postgraduate) NA</b>
---



		SC		ST		Other Reserved Categories		General		Total	
<b>1<sup>st</sup> year</b>	Appeared	01	00	00	00	05	04	04	02	10	06
	1 <sup>st</sup> division										
	2 <sup>nd</sup> Division										
	3 <sup>rd</sup> Division										
<b>2<sup>nd</sup> year</b>	Appeared										
	1 <sup>st</sup> division										
	2 <sup>nd</sup> Division										
	3 <sup>rd</sup> Division										

Data Source: AISHE, Examination results declared by [affiliating university/autonomous college]

#### 6. Placement and student tracking

<b>(a) Placement and Tracking of Students who graduated in [previous academic year] (Undergraduate)</b>						
		Number of students who graduated in [the previous academic year] (*)	Of (*), the number of students who were successfully tracked and are:			
			Employed/ Self-employed	In education/ training	Unemployed	Not in the labour force
<b>SC</b>	Male	Nil	Nil	Nil	Nil	Nil
	Female	Nil	Nil	Nil	Nil	Nil
<b>ST</b>	Male	Nil	Nil	Nil	Nil	Nil
	Female	Nil	Nil	Nil	Nil	Nil
<b>General</b>	Male	Nil	Nil	Nil	Nil	Nil
	Female	Nil	Nil	Nil	Nil	Nil
<b>Total</b>	Male	Nil	Nil	Nil	Nil	Nil
	Female	Nil	Nil	Nil	Nil	Nil

Data Source: Records of the college placement cell

<b>(b) Placement and Tracking of Students who graduated in [previous academic year] (Postgraduate) NA</b>
---

		Number of students who graduated in [the previous academic year] (*)	Of (*), the number of students who were successfully tracked and are:			
			Employed/ Self-employed	In education/ training	Unemployed	Not in the labour force
SC	Male	Nil	Nil	Nil	Nil	Nil
	Female	Nil	Nil	Nil	Nil	Nil
ST	Male	Nil	Nil	Nil	Nil	Nil
	Female	Nil	Nil	Nil	Nil	Nil
General	Male	Nil	Nil	Nil	Nil	Nil
	Female	Nil	Nil	Nil	Nil	Nil
Total	Male	Nil	Nil	Nil	Nil	Nil
	Female	Nil	Nil	Nil	Nil	Nil

Data Source: Records of the college placement cell

7. PhDs Awarded NA

Number of PhDs awarded between October 1 <sup>st</sup> [previous year] to September 30 <sup>th</sup> [current year]	
Discipline Group	Number
Arts	
Commerce	
Criminology and Forensic Science	
Cultural Studies	
Defence Studies	
Design	
Disability Studies	
Education	
Fashion Technology	
Fine Arts	
Fisheries Science	
Foreign Languages	
Gandhian Studies	
Home Science	
Indian Languages	
IT & Computer	
Journalism and Mass Communication	
Law	
Library and Information Science	
Linguistics	
Management	
Marine Science and Oceanography	
Oriental Learning	
Physical Education	
Religious Studies	
Science	
Social Science	
Social Work	
Women Studies	
Literature	
Other	
<b>All disciplines</b>	

Data Source: AISHE

8. Research and consultancy

Revenue generated through externally funded research and consultancies over [previous financial year]		
Discipline Group	Number of active projects	Total Revenue Generated (Rs. lakhs)
Arts	00	00
Commerce		
Criminology and Forensic Science		
Cultural Studies		
Defence Studies		
Design		
Disability Studies		
Education		
Fashion Technology		
Fine Arts		
Fisheries Science		
Foreign Languages		
Gandhian Studies		
Home Science		
Indian Languages		
IT & Computer		
Journalism and Mass Communication		
Law		
Library and Information Science		
Linguistics		
Management		
Marine Science and Oceanography		
Oriental Learning		
Others / Inter-disciplinary		
Physical Education		
Religious Studies		
Science		
Social Science		
Social Work		
Veterinary and Animal Sciences		
Women Studies		
<b>All disciplines</b>		

Data Source: College/university records

Number of papers published in peer-reviewed journals between October 1 <sup>st</sup> [previous year] to September 30 <sup>th</sup> [current year]			
Discipline Group	Number of papers published		Number of published papers through cross-institute research collaboration
	International Journals	National Journals	
Arts	00	00	
Commerce			
Criminology and Forensic Science			
Cultural Studies			
Defence Studies			
Design			
Disability Studies			
Education			
Fashion Technology			
Fine Arts			
Fisheries Science			
Foreign Languages			
Gandhian Studies			
Home Science			
Indian Languages			
IT & Computer			
Journalism and Mass Communication			
Law			
Library and Information Science			
Linguistics			
Management			
Marine Science and Oceanography			
Oriental Learning			
Others / Inter-disciplinary			
Physical Education			
Religious Studies			
Science			
Social Science			
Social Work			
Women Studies			
<b>All disciplines</b>			

Date Source: College records based on published papers submitted by faculty

9. NAAC accreditation and UGC autonomy NIL – not applied.

	Date of Application (LOI & SSR submitted)	Date on which accreditation was received	Grade	Valid till

Date of submission of the Annual Quality Assurance Report for the current year: \_\_\_\_\_.

Does the college have currently valid UGC autonomy? \_\_\_\_\_ No \_\_\_\_\_ . If yes, by order number \_\_\_\_\_, dated \_\_\_\_\_.

#### 10. Institutional Trends

Variable	Baseline Value	[Year 1]	[Year 2]	[Year 3]	[Year 4]	Current Year
Percentage of sanctioned seats in the 1 <sup>st</sup> year filled (undergraduate, all categories)				63%	100% Except St Cate.	100% Except St Cate.
Percentage of sanctioned seats in the 1 <sup>st</sup> year filled (postgraduate, all categories)						
Transition rate from the 1 <sup>st</sup> year to the 2 <sup>nd</sup> year (undergraduate, all categories)				90%	92%	94%
On-time graduation rate (undergraduate, all categories)						
Transition rate from the 1 <sup>st</sup> year to the 2 <sup>nd</sup> year (post graduate, all categories)						
On-time graduation rate (postgraduate, all categories)						
Regular faculty in position rate (all levels, reserved categories)						
Regular faculty in position rate (all levels, unreserved categories)						
Percentage of regular faculty with PhDs (all levels)				12%		
Employment rate of graduates from the previous academic year (undergraduate, all categories)				10%	10%	10%
Employment rate of graduates from the previous academic year (postgraduate, all categories)						
Percentage of total revenue generated through externally funded research						
Number of papers published in peer-reviewed, international journals						

Source: Tables under section 1-8.

## 11. Financial Reports

Name and registration number of the auditor **Shri Vijay Prakash Gupta Reg. No.402543**

Number of audit observations recorded by the auditor **01 Per Year**

Number of audit responses found satisfactory, as certified by the project directorate  
Satisfactory

Certified audit reports as per the standard Chart of Accounts to be attached.

## 12. All India Survey of Higher Education

Date on which all applicable fields of the Data Collection Format for the All India Survey of Higher Education were completed and submitted Up to the 20 December 2018

### Instructions

- All data is to be reported as on 20 December of the current year.
- Postgraduate courses refer to courses at the Masters and MPhil level.
- The number of sanctioned seats is the number of students the college is authorized, by the UGC/DHE/affiliating University, to admit in the first year of its degree programs.
- The number of sanctioned faculty posts is the number of faculty the college is authorized, by the UGC/DHE/affiliating University, to recruit on a full-time basis.
- Enrolment is defined as the number of students who have paid their admission fees for joining a degree program by 20 December of the respective academic year.
- Admission is defined as the number of students who have paid their admission fees for joining a degree program, in the first year, by 20 December of the respective academic year and who have never been enrolled in that degree program previously.
- Other Reserved Categories include all categories of students (for e.g. sports quota, extracurricular quota, residents of Jammu and Kashmir etc.) for whom a fixed percentage of sanctioned seats are reserved.
- Examination results are to be reported for examinations held in the previous academic year, and the results for which were declared by 20 December of the current year.
- Allowed to keep terms refers to students who did not pass all subjects in the previous year but were allowed to transition to the next year of their respective degree programs.
- Regular faculty refers to faculty employed on open-ended, full-time contracts as per UGC norms.
- Contract faculty refers to faculty employed on fixed term, full-time contracts as per UGC norms.
- Guest Lecturers refers to faculty employed on a per lecture or per day basis as per UGC norms.
- Data on scholarships is to be reported on all scholarships awarded between 1<sup>st</sup> October of the previous year and 20 December of the current year.
- A hostel seat is considered occupied if a student has been allotted a seat in the hostel and the student, to whom the seat was allotted, has paid the hostel fee for the current academic year.

- Examination results refers to the average score obtained by a student, in the respective academic year, across all exams that are used to assess whether the student has met the requirement of the degree program in which he/she is enrolled.
- Student tracking refers to having up to date contact information (mobile phone and/or email address) and status (employment, unemployed, in formal education or training, not in the labour market/other) for each student for up to six from the end of the academic year when the student passed out (graduated).
- Externally funded research and consultancies refer to research and/or development funded through consultancy contracts or partnerships with a sponsor or purchaser who is external to the institution.
- A peer-reviewed journal is one that subjects an author's research to review and evaluation by others who are experts in the same field, before the research is published.
- An international journal is one that has an International Standard Serial Number (ISSN) issued by the ISSN International Centre.
- A paper is said to be published through cross-institute research collaboration if the primary affiliation of at least two authors is to different colleges/institutions.
- The institutional performance indicators common across all institutions can be found in the PIP. Institution-specific performance indicators can be found in the MOU signed between the Institution and the Department of Higher Education.
- The standard Chart of Accounts refers to the standard format for audit reports as notified by the Department of Higher Education through its orders.