

BarAnnual Report 2017

This format outlines the annual reports to be published by all colleges in the Madhya Pradesh on their websites, by October 31st of each year. Part I is intended as a guide and colleges are free to alter the contents and format as they see fit. Part II, the Appendix (Institutional Performance Data and Financial Reports), is mandatory and colleges are required to report all data as per the attached format and instructions.

Important Information –

- Name of the college – Govt. College Mandleshwar Distt khargone M.P. 451221
- Place of the college – Dhamnod road mandleshwar
- District - Khargone
- Division – Indore
- Year of establishment of college - 1982
- Name and Contact details(Mail id , Phone) of Principal – Dr B. L. Bilwe 9425980757
- Name , Post and Contact details of (mail id, Phone no.) of Reporting In charge – Dr B. L. Bilwe Principal 9425980757
- Date of report submission – 28/12/2017

Part I

1. The Principal's Report (2 pages)- Highlights the key activities, events, and successes of the past year and briefly describes major new initiatives to be undertaken over the next year.

The Session 2016-17 commenced with the centrally online admission process. The total number of admitted students is 1399. Initially the zero classes were arranged for 10 days. The general information of improvement in language, semester system, syllabus, moral values etc. were given to the students. The teaching as per the scheduled calendar was conducted for Arts, Science and Commerce classes. Teachers' maintained regular teaching diary, planning of teaching and attendance register. The continues comprehensive revolution (CCE) test were organized as per the scheduled calendar and the marks obtained by candidates were reported online to the university. The practical work in science classes was completed in due time before semester examination. The university semester examinations were conducted as per the time table of university successfully.

The students participated in youth festival up to district level. Miss Jyoti Gurjar B.A. Ist year Miss. Bhawana Sunere B.Sc. III year, Naveen Kushwah M.A. Previous Hindi Participated in District Level Quiz Competition and Deepak Barwal Participated in District level Painting Competition and Naveen Kushwah M.A. Previous Hindi Participated in District level Debate and Discussion Competition. Naveen Kushwah also Participated in Division level discussion Competition.

Badminton, Cricket was conducted during the session and student attendant the district level competitions Govt.College Mandleshwar organised District level Drama Competition during the session. In sports activity college has organised Table Tennis District level Competition in the college during the session.

The constructions of new parking shed was completed by the budget sanctioned by Janbhagidari Samiti and Jila Yojna.

The Eligible students were granted various types of scholarships. 157 girls candidate got Gaon Ki Beti Scholarship, 409 girls of villages received Transportation allowance. 209 SC and 395 ST students got post metric scholarship and received books Rs. 1500/- p.a. and stationary Rs. 500/- p.a. under SC/ST scheme.

The books worth Rs. 600000/- were purchased in the library as per new syllabus. One Bio Metric attendance machine and 20 sets of CCTV camera were fitted to supervise regular work and examination. Two water Cooler and four water purifiers were also purchased for the betterment of water facility. Ten computer sets were also purchased for computer lab. To improve Toilets facility one gents and one girls Toilets are also constructed in the college. Last year we got NAAC evaluation and got "B" Grade.

The cashbooks were maintain in the office and audited by CA up to 1/03/2016. The results of the various classes and courses were satisfactory. The NSS unit under took Tree Plantation, Enrolment of new voters in Voter list, Sanitation work, Protection and Irrigation of trees during the session. The Swami

Vivekanand Career cell conducted lectures as per the calendar on getting employment and avenues of new fields. Special training in computer and beauty parlor were arranged for 50-50 candidates. The semester examinations were conducted successfully. Lab apparatus for physics and Chemistry lab have been purchased for up gradation of Lab.

Demand for fulfilling the vacant position of offices staff for head Clark, accountant, astt. grade 2 and have been sent to department of higher education M.P. Bhopal. The collage suffers acute shortage of office staff.

2. Overview (1 page)

(i) Vision, Mission and Objectives of the college

Vision:-

To create well cultured highly educated and economically self dependant society.

Mission:-

1. To provide quality education to youth and to create opportunities for them in the field of research and employment.
2. To develop self confidence, personality and the spirit of nationalism.
3. To produce responsible, sensitive and good citizens.

(ii) Brief introduction of the college (including the status (Govt. / Lead/ Constituent/ Affiliated/ Private), Parent University, UGC recognition, CPE status, etc), location & campus area

The govt. Degree College Mandleshwar is situated between Mandleshwar and Maheshwar at Dhamnod road Gandhi Nagar Mandleshwar. It is 03 kms away from Mandleshwar and 05 kms away from Maheshwar. The college was established in 1982 and shifted in new building in 1990. The college offers teaching programme in Arts, Commerce and Science faculty up to under graduate level and teaching facility in Hindi, Political Science, Economics, English, Sociology and Commerce subjects up to post graduate level is available. The college is affiliated with Devi Ahilya Vishvavidyalaya Indore and it registered under 2f and 12b act of UGC. The college has its own building having campus area 30 acres. Maheshwar is a tehsil place situated in district Khargone. The lead college is govt. post graduate college Khargone and lies in Indore sambhag.

(iii) History of the college with significant milestones

Govt College Mandleshwar Came into existence on 28 August 1982. Initially it started functioning in Govt Boys Higher Secondary School Mandleshwar with Art and Commerce faculty. it was shifted into new building in the year 1990 which is situated between Maheshwar and Mandleshwar. The College is 3 km away from Mandleshwar city and 05 km away from Maheshwar city. Science faculty is also started in the year 1990 in Govt College Mandleshwar. M.Com and M.A. in five Subjects (Hindi, Political Science, Economics, English, Sociology) are started in Govt College Mandleshwar in the year 1994. It is Co-education College.

The existing building has Principal's room, eleven class rooms, one community hall, four laboratories (Zoology, Botany, Physics, Chemistry) one library, one staff room, one NSS room, one store room, one computer lab, one girls common room, play ground, separate toilets for boys and girls, two water coolers with water purifiers, garden and green trees outside the campus. The flower pots have been decorated inside the campus. The principal office, administrative office, library, computer lab is equipped with good IT facilities. There is SWAN connectivity is available to facilitate internet connection. The campus is Wi-Fi within 20 meter range 20 CCTV camera have been fitted in classroom and laboratories. The student strength in session 2016-17 is 1750.

(iv) Faculties and major disciplines

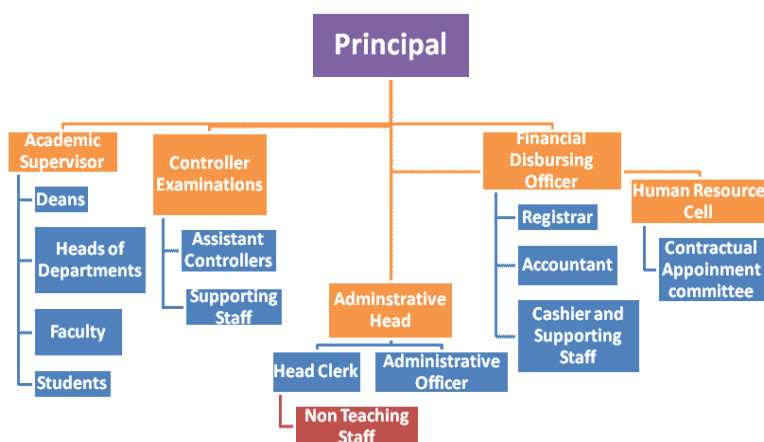
The college offers teaching courses in Arts, Science and Commerce faculties' up to under graduate level. The available subjects in Arts are Hindi, Economics, Political Science, Sociology, English and Compulsory subjects in commerce. In science faculty the college run B.Sc. Biology, B.Sc. Maths courses. There are post graduate classes in Hindi, Political Science, Economics, Sociology, English and Commerce subjects.

3. Senior Management Team and Board of Governors (1 page)

Lists the members of the senior management team (Principal, Registrar, Deans etc.) and members of the Board of Governors including their designations and professional backgrounds.

Administrative Hierarchy

For example -:



List of Chairperson/members of Statutory Bodies like Board of Governors/ Executive Committee/ Academic Council/ Janbhagidari Samiti, etc

Academic Supervisor

Principal Dr.B.L.Bilwe, Dr.C.L.Dulkar Dean Science faculty Dr.D.K.Mahant, Dean commerce, Prof.Rajgur Patidar dean Arts, Guest faculty Prof.Reena Rokde head of Zoology Prof. Rajni Survanshi Head of commerce ,Dr. Lata Mansare Head of Political Science, Dr.O.S.Parihar Hindi,Prof. B.L.Hirve Economics, Dr.Mukesh Sathe English, Guest faculty Mukesh Verma Physics, Guest faculty Khushboo Tiwari Maths, Prof. Rajgur PatidarSociology, Dr.S.S.Thakur Chemistry, Dr.C.L.Dulkar Botany, Prof. Santosh Barde Commerce.
Controller Examination : Center supdt Dr.B.L.Bilwe. shift supdt. Dr.Lata Mansare, Prof.B.L.Hirve Prof Dr.D.K.Mahant.
Office staff Smt Kavita Sakle , Shri Ramedra Yogi.

Administrative Staff: Principal Dr. B.L.Bilwe, Smt. Kavite Sakle. Grade 3, Shri Ramedra Yogi Grade 3, Guest faculty Shri Mukesh Shrivatav Sports officer. Guest faculty Miss Sonu Chounha librarian.

Technical Staff: Lab technician Shri H.R.Chakravati, Shri R.K.Ginnare, Shri C.L.Saroj, Shri Sunil Muvel

Finance Controller: Principal Dr. B.L.Bilwe, Smt. Kavita Sakle astt. Grade 3(accounts in charge).

Human Resource: Dr.C.L.Dulkar

Janbhagidari Samiti : At President not constructed

4. Admission Statistics (1 page)

- The number of applicants at the UG and PG level who ranked the college as their 1st, 2nd and 3rd preference, the number of applications received for PhD courses, and the number of students admitted at each level as per the following format.

Applications	UG	PG	PhD
Applications that ranked the college as the 1 st preference	380	216	NA
Applications that ranked the college as the 2 nd preference	108	62	
Applications that ranked the college as the 3 rd preference	54	30	
Total number of applications received	542	308	
Number of students admitted	1274	476	

Data Source: E-pravesh portal, records of the affiliating university

- A brief demographic profile of students admitted (in terms of gender, caste, whether from MP etc.)

Name of the Course	Gender		Category	% of students from the State	% of students from other states
	M	F			
B.A.	8	15	GEN	100%	0%
	21	38	OBC	100%	0%
	33	36	SC	100%	0%
	67	89	ST	100%	0%
B.Sc.	03	15	GEN	100%	0%
	14	26	OBC	100%	0%
	20	35	SC	100%	0%
	24	28	ST	100%	0%
B.Com.	3	7	GEN	100%	0%
	19	31	OBC	100%	0%
	4	4	SC	100%	0%
	0	2	ST	100%	0%
M.A. Hindi	1	6	GEN	100%	0%
	1	15	OBC	100%	0%
	4	12	SC	100%	0%
	3	14	ST	100%	0%
M.A. Eco.	0	1	GEN	100%	0%
	2	3	OBC	100%	0%
	2	1	SC	100%	0%
	2	22	ST	100%	0%
M.A. Soc.	1	2	GEN	100%	0%
	3	4	OBC	100%	0%
	2	1	SC	100%	0%
	8	20	ST	100%	0%
M.A. Eng.	0	7	GEN	100%	0%
	0	14	OBC	100%	0%
	4	3	SC	100%	0%
	0	0	ST	100%	0%
M.A. Pol.	0	1	GEN	100%	0%

Sci.	1	7	OBC	100%	0%
	4	3	SC	100%	0%
	8	25	ST	100%	0%
M.Com.	10	15	GEN	100%	0%
	19	33	OBC	100%	0%
	05	04	SC	100%	0%
	05	09	ST	100%	0%

5- Academic Programs: Core Programs - UG & PG Core programs at UG level

Stream	Name of the Core Program	Eligibility	Optional subjects
Arts	Bachelor of Arts	10+2 from a recognized Board OR 10+2 with relevant vocational course from M.P. Board	Foundation course + a group of 3 optional subjects
Commerce	Bachelor of Commerce	10+2 from a recognized Board OR 10+2 with relevant vocational course from M.P. Board	Foundation course + a group of 3 optional subjects
Science	Bachelor of Science	10+2 from a recognized Board OR 10+2 with relevant vocational course from M.P. Board	Foundation course + a group of 3 optional subjects

Core Options at PG level

Faculty	Name of the Core Program	Eligibility	Subject Options
Arts	Master of Arts	3 year Degree course in any faculty/ Honours degree course in same subject	05
Commerce	Master of Commerce	3 year Degree course in any faculty/ Honours degree course in same subject	01

M.Phil/ Ph.D. Programs

S.no.	Subject	Eligibility	No. of scholars registered
Nil	Nil	Nil	Nil

PG Diploma/ Diploma/ Certificate/ Self-financed/ Skill based Vocational/ Short term courses

Name of the Course	Department	Duration	Fees	Seats
Nil	Nil	Nil	Nil	Nil
Nil	Nil	Nil	Nil	Nil
Nil	Nil	Nil	Nil	Nil

5. Academic Calendar 2017-18

Academic Work	First/ Semester	Third/ Fifth	Second/ Fourth/ Sixth Semester
Orientation Classes/Zero Classes/SWOT analysis	1 Jul to 08 Jul 2017 1 Jul to 08 Jul (07 Days)		26 Dec 2017 (01 Working Day)
Teaching and Continuous Comprehensive Evaluation	10 Jul to 02 Nov 2017 (93 Days)		27 Dec 2017 to 18 Apr 2018 (92 days)
CCE Schedule	III week of Sep. 2017		II week of Mar 2018
Preparation Leave	02 Nov to 09 Nov 2017		19 Apr 2018 to 21 Apr 2018
Practical Exams (Graduation/Post Graduation)	Between 23 Oct to 09 Nov 2017		Between 02 Apr to 18 Apr 2018
Semester and ATKT Exams	10 Nov to 14 Dec 2017		23 Apr to 26 May 2018
Declaration of Examination Results	By 31 Dec 2017		By 15 Jun 2018
Semester Break (for students)	15 Dec to 23 Dec 2017 (09 Days)		28 May to 30 Jun 2018 (34 Days)
Semester Break (for teachers)	15 Dec to 23 Dec 2017(09 Days)		28 May to 15 Jun 2018 (19 Days)

6. The Student Experience (4 pages)

Briefly describes student life in the college:

- Infrastructural facilities available to students - Classrooms, Smart classrooms, laboratories and equipment, Common Research Lab, Hostel; Canteen; Garden; Students common room, Auditorium, Sports Complex & other facilities

Infrastructural facility : 01 assembly hall, 11 classrooms, 5 laboratories, library ,principal room, office rooms, store room, staff room, play ground, garden, approach road, saperate toilets for boys and girls, sports room, NSS room, IT facility, RO water cooler, CCTV camera, Bio Matric machine, Photocopy machines, computers, Bore well and sufficient furniture's for staff, students and office.

- Library as a learning resource- advisory committee, its composition, facilities & services (e & print), annual improvement initiatives

The college has library having 15000 books. suficiant news papers in reading room. Issue of 02 book to each student of single window system.

Prof. B.L.Hirve is incharge professor of library, advisory committee Dr. C.I.Dulkar,Dr,D.K.Mahant,Dr.Lata Mansare.

- Student support services:
 - ✓ IT enabled services

The principal chamber, office, library has IT connection facility and internet facility. About 20 computers are in the college SWAN connection and campus is Wi-Fi.

- ✓ Financial assistance (scholarships/ schemes for SC/ST/OBC/ minority, Group & Health Insurance Schemes)

Scholarship Name	2013-14		2014-15		2015-16		2016-17	
	No. Of Students	Amount	No. Of Students	Amount	No. Of Students	Amount	No. Of Students	Amount
Gaon Ki Beti	93	465000	88	440000	199	595000	157	785000
Pratibha Kiran	Nil	Nil	Nil	Nil	Nil	Nil	Nil	Nil
Vikramaditya	Nil	Nil	Nil	Nil	Nil	Nil	Nil	Nil
Awagaman	302	280550	377	283779	381	284430	409	138990
ST	291	1932205	324	2042890	304	1937640	395	2465270
SC	353	2726538	156	976110	171	469950	209	1293949
OBC	786	4226123	234	844900	255	539890	318	692906
Minor Community	Nil	Nil	Nil	Nil	Nil	Nil	Nil	Nil
Total Amount		9630416		4587679		3826910		5376115

The Insurance of students for session 2016-17 have been done.

- ✓ Personal enhancement & development schemes- NCC, NSS, Facilities for physically challenged & slow learners; Tutor-Guardian Scheme, Grievance Redressal Cell, Entrepreneurship Cell, Remedial classes, Career Guidance Cell.

The institution has one NSS unit of 50 volunteers, ramp for disabled candidate, grievance and redressal cell, career guidance cell, personality development cell and anti ragging squad.

- ✓ Extracurricular activities: Calendar of activities (Sports, Youth Festival, cultural and literary events), Achievements, Awards

Sports Department : Kabaddi, Badminton, Table Tennis, Cricket, Volleyball, Chess games are available. Students participate in district level as per calendar.

Youth festival : Students participated in youth festival up to university level in Debate and discussion competition , up to district level in Painting and quiz competition.

- ✓ Major student welfare initiatives over the past year

Free distribution of book and stationery for SC/ST students, 02 book to each student from library, issue of TC, Character Certificate, Marksheet and distribution of Scholarships.

- Extension Activities

NSS unit organized social work such as maintaining sanitation, encourage new voters to enroll in voter list, tree plantation, development of green campus etc.

Personality development cell organized lectures on Indian Culture from eminent orators as per calendar.

Swami Vivekanand Career cell organized lectures on avenues of employment and competitive examination.

7. Student Achievements (5 pages)

Highlights the most significant academic and non-academic achievements of students over the past year. This can include major academic awards and scholarships received student research, and sports and other extracurricular activities. Focuses, in particular, on profiling top achievers and describing how resources provided by the college helped these students succeed.

ACADEMIC

- Merit

S.no	Name of the award/ medal/ meritorious scholarship	Name of the recipient	Class	Area of achievement
Nil	Nil	Nil	Nil	Nil

- Research scholarship/ award

S.no	Name of the scholarship award/	Name of the recipient	Class	Area of research
Nil	Nil	Nil	Nil	Nil

CULTURAL

- Participation

S.no	Name of the event	District Level	State Level	University	National Level
1	Quiz	√	X	√	X
2	Panting	√	X	X	X
3	Debate & Discussion	√	X	X	X

- Awards and Achievements

Name of the student	Class	Event	Award/Achievement
Nil	Nil	Nil	Nil

SPORTS

- Participation

S.no	Name of the event	Division Level	State Level	University/ National Level	International Level
1	Kabaddi	X	X	X	X
2	Cricket	X	X	X	X
3	Bad Minton	X	X	X	X
4	Chess	X	X	X	X

- Awards and Achievements

Name of the student	Class	Sport	Award/Achievement
Nil	Nil	Nil	Nil

8. Research Activities (4 pages)

Identifies major research themes, places these themes in their social and economic context, highlights major research achievements (publications, collaborations, intellectual property produced, external funding received etc.), and profiles top researchers. Lays out the research agenda and identifies themes for the coming year.

- Major research themes

S. No.	Department	Prioritized research area and expertise	Social/ economic context
<i>Nil</i>	<i>Nil</i>	<i>Nil</i>	<i>Nil</i>

- Major/Minor research projects

S. No	Name of the Faculty	Year	Title of the project	Name of funding Agency/ Industry	Total grant received
<i>Nil</i>	<i>Nil</i>	<i>Nil</i>	<i>Nil</i>	<i>Nil</i>	<i>Nil</i>

- Papers presented in regional, national and international seminars/ conferences

S. No.	Name of the faculty	Regional/ State	National	International
<i>Nil</i>	<i>Nil</i>	<i>Nil</i>	<i>Nil</i>	<i>Nil</i>

- Publications in national/ international journals

S.No.	Name of the faculty	Name of the journal	Title of the paper	ISSN/ ISBN number /Impact factor
<i>Nil</i>	<i>Nil</i>	<i>Nil</i>	<i>Nil</i>	<i>Nil</i>
<i>Nil</i>	<i>Nil</i>	<i>Nil</i>	<i>Nil</i>	<i>Nil</i>

- List of linkages/ Collaborations/ MOUs

Nil

- College Publications: Research Journal, Magazine, Newsletter

<i>Nil</i>

9. Human Resources (2 pages)

Highlights senior faculty and administrative appointments. Describes what new areas of activity (new courses, research areas, extracurricular activities etc.) and administrative improvements are enabled by these appointments.

1. Faculty and Administrative appointments: Teaching and Non-teaching

Positions	Teaching Faculty				Non Teaching Faculty	Technical Staff
	Prof	Promoted Prof	Assistant Prof	Guest Faculty		
Sanctioned by UGC/ University/ State Govt						
<i>Filled</i>	Nil	Nil	10	03	02	04
Sanctioned by Management/ Janbhagidari Samiti/ Other authority	<i>Nil</i>	<i>Nil</i>	<i>Nil</i>	<i>Nil</i>	<i>Nil</i>	<i>Nil</i>
<i>Filled</i>	<i>Nil</i>	<i>Nil</i>	<i>Nil</i>	<i>Nil</i>	<i>Nil</i>	<i>Nil</i>

2. Guest Faculty: subject-wise appointments

S.no.	Name of the Guest Faculty	Qualification	Subject
1	Shri Mukesh Verma	M.Sc. Physics	Physics
2	Dr. Reena Rokade	M.Sc. Ph.D.	Zoology
3	Mrs. Khushboo Rawat	M.Sc. M.Phil	Maths
4	Shri Mukesh Shrivatav	M. P. ed.	Sports Dept.
5	Kum. Sonu Chouhan	M. Lib.	Librarian

3. Annual improvement in academic, research & administrative Initiatives

No major improvement

10.Events and Initiatives (5 pages)

Describes major events including seminars, conferences, competitions, student study trips etc. Focuses on what was achieved and learned, and how the college will follow up.

Describes significant academic, administrative, student support, fundraising, and other initiatives over the past year. The description of each initiative will be structured around the need for the initiative, how it was designed, what resources were used, what results were achieved, and which features of the initiative drove success.

Nil

11. Institutional Development plan (4 pages)

Describes the college's activities over the past year under different schemes, discusses performance against strategic/institutional development plans and commitments over the previous year.

Indicator*	Baseline Value	Target for [current year]	Value as on 30 th September [current year]
Nil	Nil	Nil	Nil

Role of Internal Quality Assurance Cell (IQAC) in academic audit and initiating quality assurance strategies and processes

IQAC Cell assesses the annual work performance of teachers and supervises academic activities to improve quality of education.

12. Placement Report (3 pages)

Describes the college's placement cell activities, placement rate and salary statistics, and lists major employers and sectors of employment (disaggregated by gender and course studied). Profiles successful alumni and identifies emerging placement trends.

Activities of Placement Cell

S.no.	Name of the activity	Name of the Resource Person/ agency	Date & Duration
Nil	Nil	Nil	Nil

Placement Details

S.no.	No. of Students Selected	List of employers/companies	Salary Package
Nil	Nil	Nil	Nil

Alumni Profile

S.no.	Name of Alumni	Employment status	Name of the organisation
1	Shri Jitendra Negi	Advocate	Self Practice
2	Shri Manoj Patidar	Business	Self Practice
3	Shri Ramakant Ransore	Journalist	Self Practice
4	Shri Yashwant Tanwar	Business	Self Practice

13. Innovations and Best Practices

The Staff and student help in maintaining green campus by continuous tree plantation and irrigate them regularly. The student and staff is aware about keeping sanitation in the institution.

14.SWOC Analysis (strength , weaknesses, Opportunity and Challenges

Strength

Good infrastructure, majority of students belongs to weak section of society, assembly hall, library, good IT facility, campus Wi-Fi, garden and play ground.

Weakness

Inadequate transport facility, shortage of regular academic office staff, lack of teachers, lack of smart classes.

Opportunity

To educate weak section of candidates, good platform for weak section of society to get educated and job.

Challenge

Responsibility to create good citizen of high values.

15.Looking Ahead (3 pages) Future Plans

Lays out the college's priorities and goals over the coming year. Describes key initiatives planned, what each initiative is expected to achieve, and how it will contribute to the college's long term development.

Key Initiatives Planned/ implemented

S. No	Head (administrative/ academic, etc)	Nature of proposal	Expected Outcome
1	Administrative	Proposal for construction of two laboratories have been sent to department of higher education.	The proposal is in process of sanction.
2		Proposal for construction for Boundary wall	The proposal is in process of sanction.

16.Appendix: Institutional Performance Data and Financial Reports

Provides key data on the institution and its performance, including achievement against strategic plan targets and financial reports. This section is mandatory. All data fields must be completed, in the format and as per the instructions attached.

Part II

Appendix: Institutional Performance Data and Financial Reports (all part II data kindly fill in attached excel sheet)

1. Sanctioned seats and enrolment

(a) Sanctioned Seats					
	SC	ST	Other Reserved Categories	General	Total
Undergraduate	90	45	162	303	600
Postgraduate	52	26	94	178	350
PhD	Nil	Nil	Nil	Nil	Nil

Data Source: AISHE

(b) Enrolment							
		Undergraduate			Postgraduate		PhD
		Year 1	Year 2	Year 3	Year 1	Year 2	
SC	Male	57	49	27	21	04	
	Female	75	54	26	24	14	
ST	Male	91	67	35	14	14	
	Female	119	119	50	90	17	
Other Reserved Categories	Male	54	30	37	28	17	
	Female	95	87	81	76	59	
General	Male	14	03	07	12	11	
	Female	37	27	33	32	31	
Total	Male	216	149	106	75	46	
	Female	326	287	190	222	121	

Data Source: AISHE

Number of sanctioned seats by discipline group and enrolment in the 1 st year as on September 30 th [current year]				
Discipline Group	Undergraduate		Postgraduate	
	Sanctioned Seats	Enrolment	Sanctioned Seats	Enrolment
Arts	300	307	250	204
Commerce	100	70	100	93
Criminology and Forensic Science				
Cultural Studies				
Defence Studies				
Design				
Disability Studies				
Education				
Fashion Technology				
Fine Arts				
Fisheries Science				
Foreign Languages				
Gandhian Studies				
Home Science				
Indian Languages				
IT & Computer				
Journalism and Mass				

Communication				
Law				
Library and Information Science				
Linguistics				
Management				
Marine Science and Oceanography				
Oriental Learning				
Physical Education				
Religious Studies				
Science	200	165		
Social Science				
Social Work				
Women Studies				

Data Source: AISHE

2. Transition and on-time graduation

2. Transition and on-time graduation				
(a) Transition from the 1st year to the 2nd year (Undergraduate)				
		Number of students admitted to the 1 st year in [the previous academic year] (*)	Of (*), the number of students currently enrolled in the 2 nd year who:	
			Passed all subjects in the 1 st year	Were Allowed to Keep Terms
SC	Male	61	24	27
	Female	59	32	20
ST	Male	97	24	35
	Female	124	32	13
Other Reserved Categories	Male	48	13	11
	Female	92	51	37
General	Male	25	17	08
	Female	42	32	09
Total	Male	231	78	81
	Female	316	147	79

Data Source: AISHE, examination results declared by [affiliating university/autonomous college]

(b) Transition from the 1st year to the 2nd year (Postgraduate)				
		Number of students admitted to the 1 st year in [the previous academic year] (*)	Of (*), the number of students currently enrolled in the 2 nd year who:	
			Passed all subjects in the 1 st year	Were Allowed to Keep Terms
SC	Male	18	5	10
	Female	17	2	6
ST	Male	18	7	9
	Female	27	8	12
Other Reserved Categories	Male	40	14	25
	Female	58	13	22
General	Male	18	3	10
	Female	38	2	11
Total	Male	94	29	54
	Female	140	25	51

Data Source: AISHE, examination results declared by [affiliating university/autonomous college]

(c) On-time graduation (Undergraduate)			
		Number of students admitted to the 1 st year in [year t-3] (*)	Of (*), the number of students who passed all final year examinations for the previous academic year
SC	Male	37	28
	Female	30	25
ST	Male	75	42
	Female	82	42
Other Reserved Categories	Male	29	21
	Female	60	40
General	Male	9	8
	Female	18	14
Total	Male	150	99
	Female	190	121

Data Source: AISHE, examination results declared by [affiliating university/autonomous college]

(d) On-time graduation (Postgraduate)			
		Number of students admitted to the 1st year in [year t-2] (*)	Of (*), the number of students who passed all final year examinations in the current year
SC	Male	12	10
	Female	16	10
ST	Male	15	07
	Female	23	15
Other Reserved Categories	Male	20	15
	Female	52	37
General	Male	20	16
	Female	20	9
Total	Male	67	49
	Female	111	71

Data Source: AISHE, examination results declared by [affiliating university/autonomous college]

3. Faculty and administrative staff in position and training

3. Faculty and administrative staff in position and training							
(a) Faculty and administrative staff in position as on 30th September, [current year]							
		Reserved					Unreserved
		SC	ST	MP Residents	Females	Others	
Assistant Professor	Sanctioned						
	Filled (Regular)	02	03		02	01	01
	Filled (Contract)						
	Guest Lecturers	01			02		
Associate Professor	Sanctioned						
	Filled (Regular)					01	
	Filled (Contract)						
	Guest Lecturers						
Professor	Sanctioned						
	Filled (Regular)						
	Filled (Contract)						
	Guest Lecturers						
Admin. Staff (all)	Sanctioned						
	Filled (Regular)	01					
	Filled (Contract)						
Accountant	Sanctioned	01					
	Filled (Regular)	Not Filled					
	Filled (Contract)						

Data Source: AISHE

(b) Training of faculty and administrative staff between October 1st [previous year] to September 30th [current year]				
		Leadership and management training	Training in the area of academic specialisation	Other training
Assistant Professor	Number trained	Nil	Nil	Nil
	Avg. number of days			
Associate Professor	Number trained			
	Avg. number of days			
Professor	Number trained			
	Avg. number of days			
Administrative Staff (all)	Number trained	Nil	N/A	Nil
	Avg. number of days		N/A	
Accountant	Number trained		N/A	
	Avg. number of days	Nil	N/A	Nil

Data Source: Compiled from training certificates submitted by faculty/administrative staff

(c) Faculty qualifications as on 30th September, [Current Year]					
		PhD	Postgraduate	Undergraduate	Others
Assistant Professor	Regular	6	3		
	Contract				
	Guest Lecturers	1	2	Nil	
Associate Professor	Regular	1			
	Contract				
	Guest Lecturers				
Professor	Regular				
	Contract				
	Guest Lecturers				

Data Source: AISHE

4. Student support services

(a) Financial support received (from all sources) by students in the college between October 1st [previous year] to September 30th [current year]							
		Undergraduate		Postgraduate		PhD	
		Number	Average Value (Rs.)	Number	Average Value (Rs.)	Number	Average Value (Rs.)
SC	Male	53	6591	10	2717	-	-
	Female	240	3396	15	6038	-	-
ST	Male	95	7006	24	3081	-	-
	Female	490	3169	42	4108	-	-
General	Male	0	0	0	0	-	-
	Female	75	1981	0		-	-
Total	Male	148	13597	34	5798	-	-
	Female	805	8546	57	10146	-	-

Data Source: AISHE

(a) Financial support received, from the DHE, by students in the college between October 1st [previous year] to September 30th [current year]							
		Undergraduate		Postgraduate		PhD	
		Number	Average Value (Rs.)	Number	Average Value (Rs.)	Number	Average Value (Rs.)
SC	Male	Nil	Nil	Nil	Nil	Nil	Nil
	Female	Nil	Nil	Nil	Nil	Nil	Nil
ST	Male	Nil	Nil	Nil	Nil	Nil	Nil
	Female	Nil	Nil	Nil	Nil	Nil	Nil
General	Male	Nil	Nil	Nil	Nil	Nil	Nil
	Female	Nil	Nil	Nil	Nil	Nil	Nil
Total	Male	Nil	Nil	Nil	Nil	Nil	Nil
	Female	Nil	Nil	Nil	Nil	Nil	Nil

Data Source: College records, DHE

(a) Financial support received, from the DHE, by students in the college between October 1st [previous year] to September 30th [current year]							
		Undergraduate		Postgraduate		PhD	
		Number	Average Value (Rs.)	Number	Average Value (Rs.)	Number	Average Value (Rs.)
SC	Male	Nil	Nil	Nil	Nil	Nil	Nil
	Female	Nil	Nil	Nil	Nil	Nil	Nil
ST	Male	Nil	Nil	Nil	Nil	Nil	Nil
	Female	Nil	Nil	Nil	Nil	Nil	Nil
General	Male	Nil	Nil	Nil	Nil	Nil	Nil
	Female	Nil	Nil	Nil	Nil	Nil	Nil
Total	Male	Nil	Nil	Nil	Nil	Nil	Nil
	Female	Nil	Nil	Nil	Nil	Nil	Nil

Data Source: Hostel register verified against fee receipts on record

(a) Hostel occupancy as on 30th September, [Current Year] (all hostels)		
Capacity		Number of residents
Males:		
Females:		
SC	Male	Nil
	Female	Nil
ST	Male	24
	Female	Nil
General	Male	Nil
	Female	Nil
Total	Male	Nil
	Female	Nil

Data Source: Hostel register verified against fee receipts on record

5. Examination Results

(a) Examination results for [previous academic year] (undergraduate)											
		SC		ST		Other Reserved Categories		General		Total	
		M	F	M	F	M	F	M	F	M	F
1st year	Appeared	61	59	97	124	48	92	25	41	231	316
	1 st division	5	4	6	4	3	8	3	4	17	20
	2 nd Division	31	34	31	30	15	58	15	27	92	149
	3 rd Division	15	14	22	12	6	23	6	10	49	59
2nd year	Appeared	30	33	36	55	38	84	6	33	110	205
	1 st division	3	4	3	5	3	8	1	4	10	21
	2 nd Division	20	21	24	36	25	55	3	21	72	133
	3 rd Division	7	8	9	14	10	21	2	8	28	51
3rd year	Appeared	28	25	42	42	21	40	8	14	99	121
	1 st division	3	2	5	4	3	4	2	2	13	12
	2 nd Division	18	17	26	26	13	26	4	8	61	77
	3 rd Division	7	6	11	12	5	10	2	4	25	32

Data Source: AISHE, Examination results declared by [affiliating university/autonomous college]

(a) Examination results for [previous academic year] (postgraduate)											
		SC		ST		Other Reserved Categories		General		Total	
		M	F	M	F	M	F	M	F	M	F
1st	Appeared	18	17	18	27	40	58	18	38	94	140

year	1 st division	1	0	1	2	4	4	2	2	8	8
	2 nd Division	10	6	13	13	23	22	8	8	54	49
	3 rd Division	4	2	4	5	12	9	3	3	23	19
2 nd year	Appeared	2	20	11	20	11	33	6	23	30	96
	1 st division	0	2	0	2	0	4	0	3	0	11
	2 nd Division	2	12	9	13	8	21	4	14	23	60
	3 rd Division	0	6	2	5	3	8	2	6	7	25

Data Source: AISHE, Examination results declared by [affiliating university/autonomous college]

6. Placement and student tracking

(a) Placement and Tracking of Students who graduated in [previous academic year] (Undergraduate)						
		Number of students who graduated in [the previous academic year] (*)	Of (*), the number of students who were successfully tracked and are:			
			Employed/ Self-employed	In education/ training	Unemployed	Not in the labor force
SC	Male	28	Not Available	Not Available	Not Available	Not Available
	Female	25	Not Available	Not Available	Not Available	Not Available
ST	Male	42	Not Available	Not Available	Not Available	Not Available
	Female	42	Not Available	Not Available	Not Available	Not Available
General	Male	9	Not Available	Not Available	Not Available	Not Available
	Female	18	Not Available	Not Available	Not Available	Not Available
Total	Male	79	Not Available	Not Available	Not Available	Not Available
	Female	85	Not Available	Not Available	Not Available	Not Available

Data Source: Records of the college placement cell

(b) Placement and Tracking of Students who graduated in [previous academic year] (Postgraduate)						
		Number of students who graduated in [the previous academic year] (*)	Of (*), the number of students who were successfully tracked and are:			
			Employed/ Self-employed	In education/ training	Unemployed	Not in the labour force
SC	Male	10	Not Available	Not Available	Not Available	Not Available
	Female	10	Not Available	Not Available	Not Available	Not Available
ST	Male	7	Not Available	Not Available	Not Available	Not Available
	Female	15	Not Available	Not Available	Not Available	Not Available
General	Male	16	Not Available	Not Available	Not Available	Not Available
	Female	9	Not Available	Not Available	Not Available	Not Available
Total	Male	33	Not Available	Not Available	Not Available	Not Available
	Female	34	Not Available	Not Available	Not Available	Not Available

Data Source: Records of the college placement cell

7. PhDs Awarded

Number of PhDs awarded between October 1st [previous year] to September 30th [current year]	
Discipline Group	Number
Arts	Nil
Commerce	Nil
Criminology and Forensic Science	
Cultural Studies	
Defence Studies	
Design	
Disability Studies	
Education	
Fashion Technology	
Fine Arts	
Fisheries Science	

Foreign Languages	
Gandhian Studies	
Home Science	
Indian Languages	
IT & Computer	
Journalism and Mass Communication	
Law	
Library and Information Science	
Linguistics	
Management	
Marine Science and Oceanography	
Oriental Learning	
Physical Education	
Religious Studies	
Science	Nil
Social Science	
Social Work	
Women Studies	
Literature	
Other	
All disciplines	

Data Source: AISHE

8. Research and consultancy

Revenue generated through externally funded research and consultancies over [previous financial year]		
Discipline Group	Number of active projects	Total Revenue Generated (Rs. lakhs)
Arts	1	Nil
Commerce	Nil	Nil
Criminology and Forensic Science	Nil	Nil
Cultural Studies	Nil	Nil
Defence Studies	Nil	Nil
Design	Nil	Nil
Disability Studies	Nil	Nil
Education	Nil	Nil
Fashion Technology	Nil	Nil
Fine Arts	Nil	Nil
Fisheries Science	Nil	Nil
Foreign Languages	Nil	Nil
Gandhian Studies	Nil	Nil
Home Science	Nil	Nil
Indian Languages	Nil	Nil
IT & Computer	Nil	Nil
Journalism and Mass Communication	Nil	Nil
Law	Nil	Nil
Library and Information Science	Nil	Nil
Linguistics	Nil	Nil
Management	Nil	Nil
Marine Science and Oceanography	Nil	Nil
Oriental Learning	Nil	Nil
Others / Inter-disciplinary	Nil	Nil

Physical Education	Nil	Nil
Religious Studies	Nil	Nil
Science	Nil	Nil
Social Science	Nil	Nil
Social Work	Nil	Nil
Veterinary and Animal Sciences	Nil	Nil
Women Studies	Nil	Nil
All disciplines	Nil	Nil

Data Source: College/university records

Number of papers published in peer-reviewed journals between October 1st [previous year] to September 30th [current year]			
Discipline Group	Number of papers published		Number of published papers through cross-institute research collaboration
	International Journals	National Journals	
Arts	Nil	Nil	Nil
Commerce	Nil	Nil	Nil
Criminology and Forensic Science			
Cultural Studies			
Defence Studies			
Design			
Disability Studies			
Education			
Fashion Technology			
Fine Arts			
Fisheries Science			
Foreign Languages			
Gandhian Studies			
Home Science			
Indian Languages			
IT & Computer			
Journalism and Mass Communication			
Law			
Library and Information Science			
Linguistics			
Management			
Marine Science and Oceanography			
Oriental Learning			
Others / Inter-disciplinary			
Physical Education			
Religious Studies			
Science	Nil	Nil	Nil
Social Science			
Social Work			
Women Studies			
All disciplines			

Date Source: College records based on published papers submitted by faculty

9. NAAC accreditation and UGC autonomy

	Date of Application (LOI & SSR submitted)	Date on which accreditation was received	Grade	Valid till
1 st Cycle	10/07/2015	02/05/2017	B	02/05/2022
2 nd Cycle				
3 rd Cycle				

Date of submission of the Annual Quality Assurance Report for the current year: _02/05/2017_.

Does the college have currently valid UGC autonomy? __No. If yes, by order number____Nil_____, dated ____Nil_____.

10. Institutional Trends

Variable	Baseline Value	[Year 1]	[Year 2]	[Year 3]	[Year 4]	Current Year
Percentage of sanctioned seats in the 1 st year filled (undergraduate, all categories)	600	73%	80%	73%	78%	82%
Percentage of sanctioned seats in the 1 st year filled (postgraduate, all categories)	350	62%	50%	50%	55%	88%
Transition rate from the 1 st year to the 2 nd year (undergraduate, all categories)	600	70%	72%	70%	77%	84%
On-time graduation rate (undergraduate, all categories)	600	59%	60%	61%	61%	72%
Transition rate from the 1 st year to the 2 nd year (post graduate, all categories)	350	77%	75%	73%	78%	80%
On-time graduation rate (postgraduate, all categories)	350	70%	69%	71%	72%	80%
Regular faculty in position rate (all levels, reserved categories)	09	100%	100%	100%	100%	100%
Regular faculty in position rate (all levels, unreserved categories)	1	1	1	1	1	1

Percentage of regular faculty with PhDs (all levels)	7	7	7	7	7	7
Employment rate of graduates from the previous academic year (undergraduate, all categories)	Nil	Nil	Nil	Nil	Nil	Nil
Employment rate of graduates from the previous academic year (postgraduate, all categories)	Nil	Nil	Nil	Nil	Nil	Nil
Percentage of total revenue generated through externally funded research	Nil	Nil	Nil	Nil	Nil	Nil
Number of papers published in peer-reviewed, international journals	5	5	5	5	5	0

Source: Tables under section 1-8.

11. Financial Reports

Name and registration number of the auditor - Shyam S. Gupta Reg. No. 007309C

Number of audit observations recorded by the auditor_- Shyam S. Gupta 2016-2017 ____.

Number of audit responses found satisfactory, as certified by the project directorate 05 (2016-2017).

Certified audit reports as per the standard Chart of Accounts to be attached.

12. All India Survey of Higher Education

Date on which all applicable fields of the Data Collection Format for the All India Survey of Higher Education were completed and submitted – 02/05/2017.

Instructions

- All data is to be reported as on 30th September of the current year.
- Postgraduate courses refer to courses at the Masters and MPhil level.
- The number of sanctioned seats is the number of students the college is authorized, by the UGC/DHE/affiliating University, to admit in the first year of its degree programs.
- The number of sanctioned faculty posts is the number of faculty the college is authorized, by the UGC/DHE/affiliating University, to recruit on a full-time basis.
- Enrolment is defined as the number of students who have paid their admission fees for joining a degree program by September 30 of the respective academic year.

- Admission is defined as the number of students who have paid their admission fees for joining a degree program, in the first year, by September 30 of the respective academic year and who have never been enrolled in that degree program previously.
- Other Reserved Categories include all categories of students (for e.g. sports quota, extracurricular quota, residents of Jammu and Kashmir etc.) for whom a fixed percentage of sanctioned seats are reserved.
- Examination results are to be reported for examinations held in the previous academic year, and the results for which were declared by 30th September of the current year.
- Allowed to keep terms refers to students who did not pass all subjects in the previous year but were allowed to transition to the next year of their respective degree programs.
- Regular faculty refers to faculty employed on open-ended, full-time contracts as per UGC norms.
- Contract faculty refers to faculty employed on fixed term, full-time contracts as per UGC norms.
- Guest Lecturers refers to faculty employed on a per lecture or per day basis as per UGC norms.
- Data on scholarships is to be reported on all scholarships awarded between 1st October of the previous year and 30th September of the current year.
- A hostel seat is considered occupied if a student has been allotted a seat in the hostel and the student, to whom the seat was allotted, has paid the hostel fee for the current academic year.
- Examination results refers to the average score obtained by a student, in the respective academic year, across all exams that are used to assess whether the student has met the requirement of the degree program in which he/she is enrolled.
- Student tracking refers to having up to date contact information (mobile phone and/or email address) and status (employment, unemployed, in formal education or training, not in the labour market/other) for each student for up to six from the end of the academic year when the student passed out (graduated).
- Externally funded research and consultancies refer to research and/or development funded through consultancy contracts or partnerships with a sponsor or purchaser who is external to the institution.
- A peer-reviewed journal is one that subjects an author's research to review and evaluation by others who are experts in the same field, before the research is published.
- An international journal is one that has an International Standard Serial Number (ISSN) issued by the ISSN International Centre.
- A paper is said to be published through cross-institute research collaboration if the primary affiliation of at least two authors is to different colleges/institutions.
- The institutional performance indicators common across all institutions can be found in the PIP. Institution-specific performance indicators can be found in the MOU signed between the Institution and the Department of Higher Education.
- The standard Chart of Accounts refers to the standard format for audit reports as notified by the Department of Higher Education through its orders.