

## Annual Report 2016-17

This format outlines the annual reports to be published by all colleges in the Madhya Pradesh on their websites, by October 31<sup>st</sup> of each year. Part I is intended as a guide and colleges are free to alter the contents and format as they see fit. Part II, the Appendix (Institutional Performance Data and Financial Reports), is mandatory and colleges are required to report all data as per the attached format and instructions.

### Important Information –

- Name of the college – government colleges shyamgarh
- Place of the college - shyamgarh
- District – mandsour
- Division – Ujjain
- Year of establishment of college – 2014-15
- Name and Contact details( Mail id , Phone ) of Principal - Dr. B. R. Nalwaya, 07422- 256291,9826769499. hegpgcman@mp.gov.in

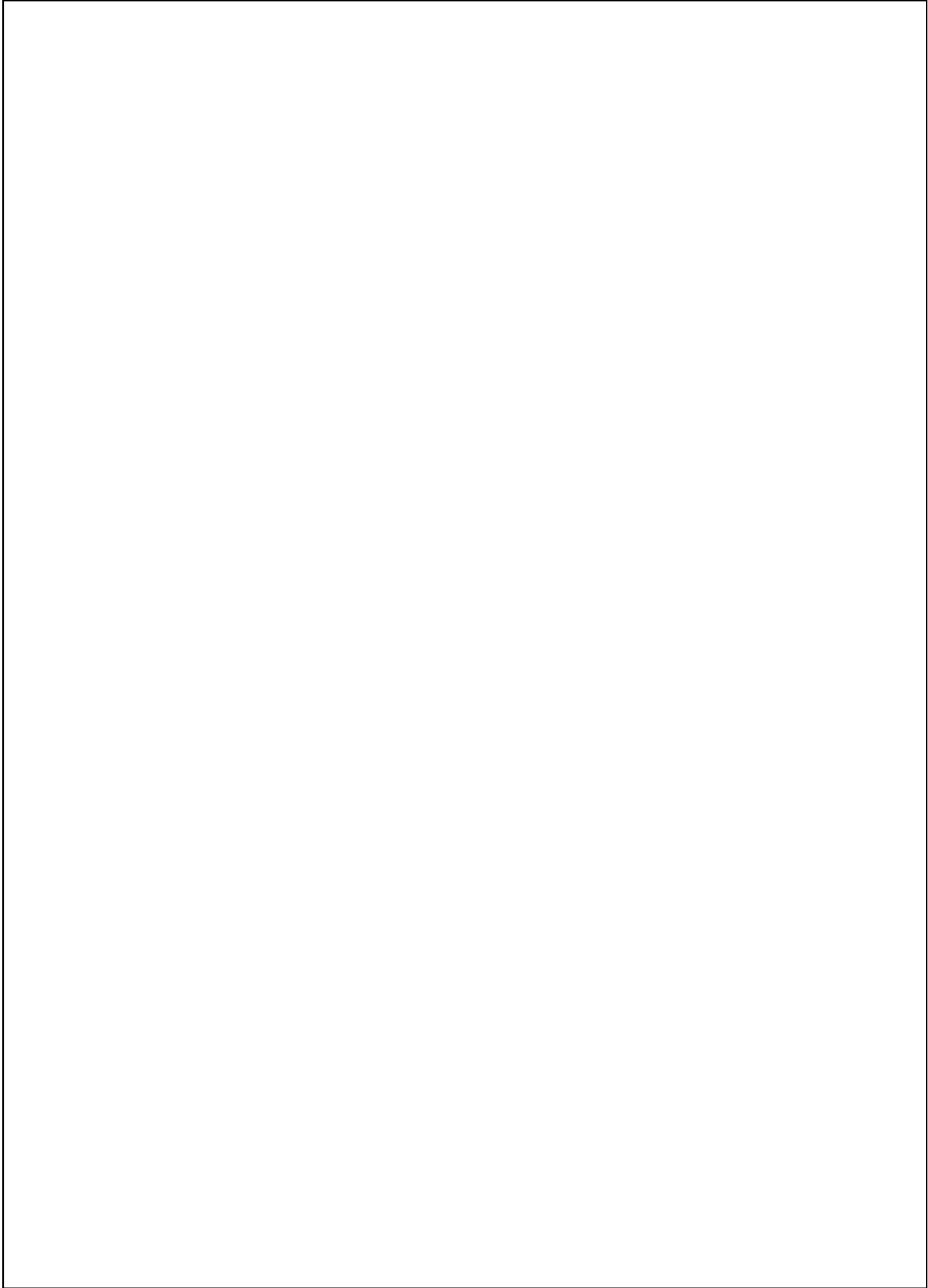
Name , Post and Contact details of ( mail id, Phone no.) of Reporting In charge -  
Dr. R.K Bakliwal, 07422-256291, 9425123757      hegpgcman@mp.gov.in

- Date of report submission -05/01/2017

### Part I

- 1. The Principal's Report (2 pages)-** Highlights the key activities, events, and successes of the past year and briefly describes major new initiatives to be undertaken over the next year.

Government College Shyamgarh has been started by the Govt of Madhya Pradesh Dept of higher Education in 2014-15. It is a new one and started with B.A. Syllabus.at present The college is running in the building of School of govt. Boys middle school shyamgarh .Land about 4 accree has been allotted for the construction of college building and contract for construction of building has been given by public works Department. The construction of college building shall be started very soon.



## 2. Overview (1 page)

### **Vision**

‘ **ESH SUPTESHU JAGARTI** ’ The Ideal is to provide excellent yet affordable Higher Education to students.

### **Mission**

**The Mission statements of the College are:**

1. To provide quality Higher Education.
2. To provide inclusive education for all.

(ii) Brief introduction of the college (including the status (Govt. / Lead/ Constituent/ Affiliated/ Private), Parent University, UGC recognition, CPE status, etc), location & campus area

Government College Shyamgarh has been started by the Govt of Madhya Pradesh Dept of higher Education in 2014-15. It is a new one and started with B.A. Syllabus. at present The college is running in the building of School of govt. Boys middle school shyamgarh .Land about 4 accree has been allotted for the construction of college building and contract for construction of building has been given by public works Department. The construction of college building shall be started very soon.

(iii) History of the college with significant milestones

The 1<sup>st</sup> batch of bachelor of arts will pass out in 2017 -18 and hence there is no history of the college.

(iv) Faculties and major disciplines

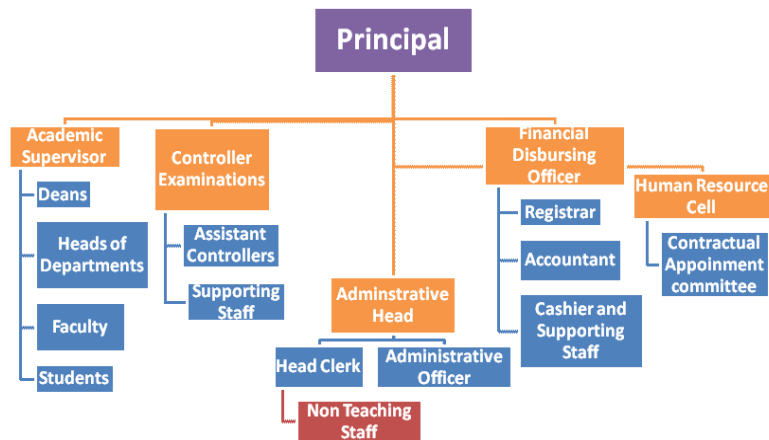
The college is started in 2014-15 with Arts subject only.

### 3. Senior Management Team and Board of Governors (1 page)

Lists the members of the senior management team (Principal, Registrar, Deans etc.) and members of the Board of Governors including their designations and professional backgrounds.

#### Administrative Hierarchy

For example -:



**List of Chairperson/members of Statutory Bodies like Board of Governors/  
Executive Committee/ Academic Council/ Janbhagidari Samiti, etc**

**4. Admission Statistics (1 page)**

- The number of applicants at the UG and PG level who ranked the college as their 1<sup>st</sup>, 2<sup>nd</sup> and 3<sup>rd</sup> preference, the number of applications received for PhD courses, and the number of students admitted at each level as per the following format.

| <b>Applications</b>                                                    | <b>UG</b>  | <b>PG</b> | <b>PhD</b> |
|------------------------------------------------------------------------|------------|-----------|------------|
| Applications that ranked the college as the 1 <sup>st</sup> preference | <b>287</b> |           | <b>NA</b>  |
| Applications that ranked the college as the 2 <sup>nd</sup> preference |            |           |            |
| Applications that ranked the college as the 3 <sup>rd</sup> preference |            |           |            |
| Total number of applications received                                  | <b>287</b> |           |            |
| Number of students admitted                                            | <b>287</b> |           |            |

Data Source: E-pravesh portal, records of the affiliating university

- A brief demographic profile of students admitted (in terms of gender, caste, whether from MP etc.)

| <b>Name of the Course</b> | <b>Gender</b> | <b>Category</b> | <b>% of students from the State</b> | <b>% of students from other states</b> |
|---------------------------|---------------|-----------------|-------------------------------------|----------------------------------------|
| B.A                       |               |                 | 100%                                | nil                                    |
|                           |               |                 |                                     |                                        |
|                           |               |                 |                                     |                                        |
|                           |               |                 |                                     |                                        |
|                           |               |                 |                                     |                                        |

## Academic Programs: Core Programs - UG & PG

### Core programs at UG level

| Stream                              | Name of the Core Program | Eligibility                                                                          | Optional subjects                                  |
|-------------------------------------|--------------------------|--------------------------------------------------------------------------------------|----------------------------------------------------|
| Arts                                | Bachelor of Arts         | 10+2 from a recognized Board OR 10+2 with relevant vocational course from M.P. Board | Foundation course + a group of 3 optional subjects |
|                                     |                          |                                                                                      | Economics      Pol. Science      Sociology         |
|                                     |                          |                                                                                      | Economics      Pol. Science      Sanskrit          |
|                                     |                          |                                                                                      | Economics      English      Drawing                |
|                                     |                          |                                                                                      | Pol. Science      Hindi lit.      Sociology        |
|                                     |                          |                                                                                      | History      Pol. Science      Sociology           |
|                                     |                          |                                                                                      | Economics      Hindi lit.      Sociology           |
| English      History      Sociology |                          |                                                                                      |                                                    |
|                                     |                          |                                                                                      |                                                    |
|                                     |                          |                                                                                      |                                                    |
|                                     |                          |                                                                                      |                                                    |
|                                     |                          |                                                                                      |                                                    |
|                                     |                          |                                                                                      |                                                    |
|                                     |                          |                                                                                      |                                                    |

### Core Options at PG level

| Faculty          | Name of the Core Program | Eligibility                                                                       | Subject Options        |
|------------------|--------------------------|-----------------------------------------------------------------------------------|------------------------|
| <i>E.g. Arts</i> | <i>Master of Arts</i>    | <i>3 year Degree course in any faculty/ Honours degree course in same subject</i> | <i>No. of subjects</i> |
| <i>Nil</i>       | <i>Nil</i>               | <i>Nil</i>                                                                        | <i>Nil</i>             |
|                  |                          |                                                                                   |                        |
|                  |                          |                                                                                   |                        |
|                  |                          |                                                                                   |                        |

|  |  |  |  |
|--|--|--|--|
|  |  |  |  |
|  |  |  |  |
|  |  |  |  |

**M.Phil/ Ph.D. Programs**

| <b>S.no.</b> | <b>Subject</b> | <b>Eligibility</b> | <b>No. of scholars registered</b> |
|--------------|----------------|--------------------|-----------------------------------|
| Nil          | Nil            | Nil                | Nil                               |
|              |                |                    |                                   |
|              |                |                    |                                   |
|              |                |                    |                                   |
|              |                |                    |                                   |
|              |                |                    |                                   |
|              |                |                    |                                   |

**PG Diploma/ Diploma/ Certificate/ Self-financed/ Skill based Vocational/  
Short term courses**

| <b>Name of the Course</b> | <b>Department</b> | <b>Duration</b> | <b>Fees</b> | <b>Seats</b> |
|---------------------------|-------------------|-----------------|-------------|--------------|
| Nil                       | Nil               | Nil             | Nil         | Nil          |
|                           |                   |                 |             |              |
|                           |                   |                 |             |              |
|                           |                   |                 |             |              |
|                           |                   |                 |             |              |
|                           |                   |                 |             |              |

**5. Academic Calendar 2016-17 -**

| <b>Academic Work</b>     | <b>First/ Third/ Fifth Semester</b>           | <b>Second/ Fourth/ Sixth Semester</b> |
|--------------------------|-----------------------------------------------|---------------------------------------|
| Orientation Classes/Zero | July as per academic calendar given by higher |                                       |

|                                                  |                                                          |                                                          |
|--------------------------------------------------|----------------------------------------------------------|----------------------------------------------------------|
| Classes/SWOT analysis                            | education dept,                                          |                                                          |
| Teaching and Continuous Comprehensive Evaluation | CCE                                                      | CCE                                                      |
| CCE Schedule                                     | September                                                | March                                                    |
| Preparation Leave                                | -                                                        | -                                                        |
| Practical Exams (Graduation/Post Graduation)     | Not applicable                                           |                                                          |
| Semester and ATKT Exams                          | As per university schedule                               |                                                          |
| Declaration of Examination Results               | February                                                 | July                                                     |
| Semester Break (for students)                    | As per academic calendar given by higher education dept, | As per academic calendar given by higher education dept, |
| Semester Break (for teachers)                    | As per academic calendar given by higher education dept, | As per academic calendar given by higher education dept, |

## 6. The Student Experience (4 pages)

Briefly describes student life in the college:

- Infrastructural facilities available to students - Classrooms, Smart classrooms, laboratories and equipment, Common Research Lab, Hostel; Canteen; Garden; Students common room, Auditorium, Sports Complex & other facilities

Presently the college is running in Middle school Building and four Classrooms are provided by Middle School.

- Library as a learning resource- advisory committee, its composition, facilities & services (e & print), annual improvement initiatives

109 books are available in the college and there no budget since last two years.



- Student support services:
  - ✓ IT enabled services

Nil

According to state govt. plans scholarship to SC\ST\OBC Students are provided | Books to SC\ST Students are distributed

- ✓ Personal enhancement & development schemes- NCC, NSS, Facilities for physically challenged & slow learners; Tutor-Guardian Scheme, Grievance Redressal Cell, Entrepreneurship Cell, Remedial classes, Career Guidance Cell.

Nil

- ✓ Extracurricular activities: Calendar of activities (Sports, Youth Festival, cultural and literary events), Achievements, Awards

Nil

✓ Major student welfare initiatives over the past year

Nil

- Extension Activities

Nil

## **7. Student Achievements (5 pages)**

Highlights the most significant academic and non-academic achievements of students over the past year. This can include major academic awards and scholarships received student research, and sports and other extracurricular activities. Focusses, in particular, on profiling

top achievers and describing how resources provided by the college helped these students succeed.

**ACADEMIC**

- Merit

| S.no | Name of the award/ medal/ meritorious scholarship | Name of the recipient | Class | Area of achievement |
|------|---------------------------------------------------|-----------------------|-------|---------------------|
|      | Nil                                               | Nil                   | Nil   | Nil                 |
|      |                                                   |                       |       |                     |
|      |                                                   |                       |       |                     |
|      |                                                   |                       |       |                     |
|      |                                                   |                       |       |                     |
|      |                                                   |                       |       |                     |
|      |                                                   |                       |       |                     |
|      |                                                   |                       |       |                     |
|      |                                                   |                       |       |                     |
|      |                                                   |                       |       |                     |
|      |                                                   |                       |       |                     |
|      |                                                   |                       |       |                     |
|      |                                                   |                       |       |                     |
|      |                                                   |                       |       |                     |

- Research scholarship/ award

| S.no | Name of the scholarship award/ | Name of the recipient | Class | Area of research |
|------|--------------------------------|-----------------------|-------|------------------|
|      | Nil                            | Nil                   | Nil   | Nil              |
|      |                                |                       |       |                  |
|      |                                |                       |       |                  |
|      |                                |                       |       |                  |
|      |                                |                       |       |                  |
|      |                                |                       |       |                  |
|      |                                |                       |       |                  |
|      |                                |                       |       |                  |
|      |                                |                       |       |                  |
|      |                                |                       |       |                  |

**CULTURAL**

- Participation



## 8. Research Activities (4 pages)

Identifies major research themes, places these themes in their social and economic context, highlights major research achievements (publications, collaborations, intellectual property produced, external funding received etc.), and profiles top researchers. Lays out the research agenda and identifies themes for the coming year.

- **Major research themes**

| S. No. | Department | Prioritized research area and expertise | Social/ economic context |
|--------|------------|-----------------------------------------|--------------------------|
|        |            |                                         |                          |
| NIL    | Nil        | NIL                                     | NIL                      |
|        |            |                                         |                          |
|        |            |                                         |                          |

- **Major/Minor research projects**

| S. No | Name of the Faculty | Year | Title of the project | Name of funding Agency/ Industry | Total grant received |
|-------|---------------------|------|----------------------|----------------------------------|----------------------|
|       |                     |      |                      |                                  |                      |
| NIL   | Nil                 | NIL  | NIL                  | NIL                              | NIL                  |
|       |                     |      |                      |                                  |                      |
|       |                     |      |                      |                                  |                      |
|       |                     |      |                      |                                  |                      |

- **Papers presented in regional, national and international seminars/ conferences**

| S. No. | Name of the faculty | Regional/ State | National | International |
|--------|---------------------|-----------------|----------|---------------|
| Nil    | NIL                 | NIL             | NIL      | NIL           |
| Nil    | NIL                 | NIL             | NIL      | NIL           |
| Nil    | NIL                 | NIL             | NIL      | NIL           |
|        |                     |                 |          |               |
|        |                     |                 |          |               |
|        |                     |                 |          |               |

- **Publications in national/ international journals**

| S.No. | Name of the faculty | Name of the journal | Title of the paper | ISSN/ ISBN number /Impact factor |
|-------|---------------------|---------------------|--------------------|----------------------------------|
|       |                     |                     |                    |                                  |
|       | Nil                 |                     |                    |                                  |
|       |                     |                     |                    |                                  |
|       |                     |                     |                    |                                  |
|       |                     |                     |                    |                                  |

- **List of linkages/ Collaborations/ MOUs**

|     |
|-----|
| Nil |
|-----|

- **College Publications: Research Journal, Magazine, Newsletter**

|     |
|-----|
| Nil |
|-----|

### 9. Human Resources (2 pages)

Highlights senior faculty and administrative appointments. Describes what new areas of activity (new courses, research areas, extracurricular activities etc.) and administrative improvements are enabled by these appointments.

#### 1. Faculty and Administrative appointments: Teaching and Non-teaching

| Positions                                 | Teaching Faculty |               |                |               | Non Teaching Faculty | Technical Staff |
|-------------------------------------------|------------------|---------------|----------------|---------------|----------------------|-----------------|
|                                           | Prof             | Promoted Prof | Assistant Prof | Guest Faculty |                      |                 |
| Sanctioned by UGC/ University/ State Govt | 01               | Nil           | 03             | 06            | 02                   | 06              |
| <i>Filled</i>                             | Nil              | Nil           | Nil            | 06            | 02                   | 06              |
| Sanctioned by                             | Nil              | Nil           | Nil            | Nil           | Nil                  | Nil             |

|                                                           |     |     |     |     |     |     |
|-----------------------------------------------------------|-----|-----|-----|-----|-----|-----|
| Management/<br>Janbhagidari<br>Samiti/ Other<br>authority |     |     |     |     |     |     |
| <i>Filled</i>                                             | Nil | Nil | Nil | Nil | Nil | Nil |

## 2. Guest Faculty: subject-wise appointments

| S.no. | Name of the Guest Faculty | Qualification    | Subject           |
|-------|---------------------------|------------------|-------------------|
| 1     | Deepika Trivedi           | M.A , M.PHIL     | ECONOMICS         |
| 2     | Vandana Gupta             | M.A              | ENGLISH           |
| 3     | Anita Patidar             | M.A PHD          | HINDI             |
| 4     | Jitendra Chawre           | M.A , MPHIL, PHD | HISTORY           |
| 5     | Radha Shukla              | M.A, MPHIL       | LIBRARIAN         |
| 6     | Jitendra Dayma            | MA.              | POLITICAL SCIENCE |
| 7     | Yogendra Jain             | MA.NET,SLET      | SOCIOLOGY         |
| 8     | Bhagwati Prasad Ahirwar   | MPED             | SPORTS OFFICER    |

## 3. Annual improvement in academic, research & administrative Initiatives

|     |
|-----|
| Nil |
|-----|

## 10.Events and Initiatives (5 pages)

Describes major events including seminars, conferences, competitions, student study trips etc. Focuses on what was achieved and learned, and how the college will follow up.

Describes significant academic, administrative, student support, fundraising, and other initiatives over the past year. The description of each initiative will be structured around the need for the initiative, how it was designed, what resources were used, what results were achieved, and which features of the initiative drove success.

|     |
|-----|
| Nil |
|-----|





|  |  |  |  |
|--|--|--|--|
|  |  |  |  |
|  |  |  |  |

**Placement Details**

| S.no. | No. of Students Selected | List of employers/companies | Salary Package |
|-------|--------------------------|-----------------------------|----------------|
|       | Nil                      |                             |                |
|       |                          |                             |                |
|       |                          |                             |                |
|       |                          |                             |                |
|       |                          |                             |                |

**Alumni Profile**

| S.no. | Name of Alumni | Employment status | Name of the organisation |
|-------|----------------|-------------------|--------------------------|
|       | Nil            |                   |                          |
|       |                |                   |                          |
|       |                |                   |                          |
|       |                |                   |                          |
|       |                |                   |                          |
|       |                |                   |                          |
|       |                |                   |                          |

**13. Innovations and Best Practices**

|     |
|-----|
| Nil |
|-----|

**14. SWOC Analysis (strength , weaknesses, Opportunity and Challenges)**

|     |
|-----|
| Nil |
|-----|

### **15.Looking Ahead (3 pages) Future Plans**

Lays out the college's priorities and goals over the coming year. Describes key initiatives planned, what each initiative is expected to achieve, and how it will contribute to the college's long term development.

#### **Key Initiatives Planned/ implemented**

| <b>S. No</b> | <b>Head<br/>(administrative/<br/>academic, etc)</b> | <b>Nature of proposal</b> | <b>Expected Outcome</b> |
|--------------|-----------------------------------------------------|---------------------------|-------------------------|
|              |                                                     |                           |                         |
|              |                                                     |                           |                         |
|              |                                                     |                           |                         |
|              |                                                     |                           |                         |
|              |                                                     |                           |                         |
|              |                                                     |                           |                         |
|              |                                                     |                           |                         |
|              |                                                     |                           |                         |
|              |                                                     |                           |                         |
|              |                                                     |                           |                         |
|              |                                                     |                           |                         |
|              |                                                     |                           |                         |
|              |                                                     |                           |                         |
|              |                                                     |                           |                         |

### **16.Appendix: Institutional Performance Data and Financial Reports**

Provides key data on the institution and its performance, including achievement against strategic plan targets and financial reports. This section is mandatory. All data fields must be completed, in the format and as per the instructions attached.

#### **Part II**

Appendix: Institutional Performance Data and Financial Reports (all part II data kindly fill in attached excel sheet )

1. Sanctioned seats and enrolment

|                             |
|-----------------------------|
| <b>(a) Sanctioned Seats</b> |
|-----------------------------|

|                      | SC | ST | Other Reserved Categories | General | Total |
|----------------------|----|----|---------------------------|---------|-------|
| <b>Undergraduate</b> |    |    |                           |         | 100   |
| <b>Postgraduate</b>  |    |    |                           |         | N/A   |
| <b>PhD</b>           |    |    |                           |         | N/A   |

Data Source: AISHE

| <b>(b) Enrolment</b>             |        |               |        |        |              |        |     |
|----------------------------------|--------|---------------|--------|--------|--------------|--------|-----|
|                                  |        | Undergraduate |        |        | Postgraduate |        | PhD |
|                                  |        | Year 1        | Year 2 | Year 3 | Year 1       | Year 2 |     |
| <b>SC</b>                        | Male   |               |        | N/A    | N/A          | N/A    | N/A |
|                                  | Female |               |        | N/A    | N/A          | N/A    | N/A |
| <b>ST</b>                        | Male   |               |        | N/A    | N/A          | N/A    | N/A |
|                                  | Female |               |        | N/A    | N/A          | N/A    | N/A |
| <b>Other Reserved Categories</b> | Male   |               |        | N/A    | N/A          | N/A    | N/A |
|                                  | Female |               |        | N/A    | N/A          | N/A    | N/A |
| <b>General</b>                   | Male   |               |        | N/A    | N/A          | N/A    | N/A |
|                                  | Female |               |        | N/A    | N/A          | N/A    | N/A |
| <b>Total</b>                     | Male   |               |        | N/A    | N/A          | N/A    | N/A |
|                                  | Female |               |        | N/A    | N/A          | N/A    | N/A |

Data Source: AISHE

| <b>Number of sanctioned seats by discipline group and enrolment in the 1<sup>st</sup> year as on September 30<sup>th</sup> [current year]</b> |                  |           |                  |           |
|-----------------------------------------------------------------------------------------------------------------------------------------------|------------------|-----------|------------------|-----------|
| Discipline Group                                                                                                                              | Undergraduate    |           | Postgraduate     |           |
|                                                                                                                                               | Sanctioned Seats | Enrolment | Sanctioned Seats | Enrolment |
| Arts                                                                                                                                          | 125              | 121       | N/A              | N/A       |
| Commerce                                                                                                                                      | N/A              | N/A       | N/A              | N/A       |
| Criminology and Forensic Science                                                                                                              | N/A              | N/A       | N/A              | N/A       |
| Cultural Studies                                                                                                                              | N/A              | N/A       | N/A              | N/A       |
| Defence Studies                                                                                                                               | N/A              | N/A       | N/A              | N/A       |
| Design                                                                                                                                        | N/A              | N/A       | N/A              | N/A       |
| Disability Studies                                                                                                                            | N/A              | N/A       | N/A              | N/A       |
| Education                                                                                                                                     | N/A              | N/A       | N/A              | N/A       |
| Fashion Technology                                                                                                                            | N/A              | N/A       | N/A              | N/A       |
| Fine Arts                                                                                                                                     | N/A              | N/A       | N/A              | N/A       |
| Fisheries Science                                                                                                                             | N/A              | N/A       | N/A              | N/A       |
| Foreign Languages                                                                                                                             | N/A              | N/A       | N/A              | N/A       |
| Gandhian Studies                                                                                                                              | N/A              | N/A       | N/A              | N/A       |
| Home Science                                                                                                                                  | N/A              | N/A       | N/A              | N/A       |
| Indian Languages                                                                                                                              | N/A              | N/A       | N/A              | N/A       |
| IT & Computer                                                                                                                                 | N/A              | N/A       | N/A              | N/A       |
| Journalism and Mass Communication                                                                                                             | N/A              | N/A       | N/A              | N/A       |

|                                 |     |     |     |     |
|---------------------------------|-----|-----|-----|-----|
| Law                             | N/A | N/A | N/A | N/A |
| Library and Information Science | N/A | N/A | N/A | N/A |
| Linguistics                     | N/A | N/A | N/A | N/A |
| Management                      | N/A | N/A | N/A | N/A |
| Marine Science and Oceanography | N/A | N/A | N/A | N/A |
| Oriental Learning               | N/A | N/A | N/A | N/A |
| Physical Education              | N/A | N/A | N/A | N/A |
| Religious Studies               | N/A | N/A | N/A | N/A |
| Science                         | N/A | N/A | N/A | N/A |
| Social Science                  | N/A | N/A | N/A | N/A |
| Social Work                     | N/A | N/A | N/A | N/A |
| Women Studies                   | N/A | N/A | N/A | N/A |

Data Source: AISHE

2. Transition and on-time graduation

| <b>(a) Transition from the 1<sup>st</sup> year to the 2<sup>nd</sup> year (Undergraduate)</b> |        |                                                                                             |                                                                                    |                            |
|-----------------------------------------------------------------------------------------------|--------|---------------------------------------------------------------------------------------------|------------------------------------------------------------------------------------|----------------------------|
|                                                                                               |        | Number of students admitted to the 1 <sup>st</sup> year in [the previous academic year] (*) | Of (*), the number of students currently enrolled in the 2 <sup>nd</sup> year who: |                            |
|                                                                                               |        |                                                                                             | Passed all subjects in the 1 <sup>st</sup> year                                    | Were Allowed to Keep Terms |
| SC                                                                                            | Male   |                                                                                             |                                                                                    |                            |
|                                                                                               | Female |                                                                                             |                                                                                    |                            |
| ST                                                                                            | Male   |                                                                                             |                                                                                    |                            |
|                                                                                               | Female |                                                                                             |                                                                                    |                            |
| Other Reserved Categories                                                                     | Male   |                                                                                             |                                                                                    |                            |
|                                                                                               | Female |                                                                                             |                                                                                    |                            |
| General                                                                                       | Male   |                                                                                             |                                                                                    |                            |
|                                                                                               | Female |                                                                                             |                                                                                    |                            |
| Total                                                                                         | Male   |                                                                                             |                                                                                    |                            |
|                                                                                               | Female |                                                                                             |                                                                                    |                            |

Data Source: AISHE, examination results declared by [affiliating university/autonomous college]

| <b>(a) Transition from the 1<sup>st</sup> year to the 2<sup>nd</sup> year (Postgraduate)</b> |      |                                                                                             |                                                                                    |                            |
|----------------------------------------------------------------------------------------------|------|---------------------------------------------------------------------------------------------|------------------------------------------------------------------------------------|----------------------------|
|                                                                                              |      | Number of students admitted to the 1 <sup>st</sup> year in [the previous academic year] (*) | Of (*), the number of students currently enrolled in the 2 <sup>nd</sup> year who: |                            |
|                                                                                              |      |                                                                                             | Passed all subjects in the 1 <sup>st</sup> year                                    | Were Allowed to Keep Terms |
| SC                                                                                           | Male |                                                                                             |                                                                                    |                            |

|                                  |        |  |  |  |
|----------------------------------|--------|--|--|--|
|                                  | Female |  |  |  |
| <b>ST</b>                        | Male   |  |  |  |
|                                  | Female |  |  |  |
| <b>Other Reserved Categories</b> | Male   |  |  |  |
|                                  | Female |  |  |  |
| <b>General</b>                   | Male   |  |  |  |
|                                  | Female |  |  |  |
| <b>Total</b>                     | Male   |  |  |  |
|                                  | Female |  |  |  |

Data Source: AISHE, examination results declared by [affiliating university/autonomous college]

| <b>(b) On-time graduation (Undergraduate)</b> |        |                                                                                 |                                                                                                             |
|-----------------------------------------------|--------|---------------------------------------------------------------------------------|-------------------------------------------------------------------------------------------------------------|
|                                               |        | <b>Number of students admitted to the 1<sup>st</sup> year in [year t-3] (*)</b> | <b>Of (*), the number of students who passed all final year examinations for the previous academic year</b> |
| <b>SC</b>                                     | Male   |                                                                                 |                                                                                                             |
|                                               | Female |                                                                                 |                                                                                                             |
| <b>ST</b>                                     | Male   |                                                                                 |                                                                                                             |
|                                               | Female |                                                                                 |                                                                                                             |
| <b>Other Reserved Categories</b>              | Male   |                                                                                 |                                                                                                             |
|                                               | Female |                                                                                 |                                                                                                             |
| <b>General</b>                                | Male   |                                                                                 |                                                                                                             |
|                                               | Female |                                                                                 |                                                                                                             |
| <b>Total</b>                                  | Male   |                                                                                 |                                                                                                             |
|                                               | Female |                                                                                 |                                                                                                             |

Data Source: AISHE, examination results declared by [affiliating university/autonomous college]

| <b>(b) On-time graduation (Postgraduate)</b> |        |                                                                                 |                                                                                                  |
|----------------------------------------------|--------|---------------------------------------------------------------------------------|--------------------------------------------------------------------------------------------------|
|                                              |        | <b>Number of students admitted to the 1<sup>st</sup> year in [year t-2] (*)</b> | <b>Of (*), the number of students who passed all final year examinations in the current year</b> |
| <b>SC</b>                                    | Male   |                                                                                 | The 1 <sup>st</sup> batch of B A will pass out in 2017-18                                        |
|                                              | Female |                                                                                 |                                                                                                  |
| <b>ST</b>                                    | Male   |                                                                                 |                                                                                                  |
|                                              | Female |                                                                                 |                                                                                                  |
| <b>Other Reserved Categories</b>             | Male   |                                                                                 |                                                                                                  |
|                                              | Female |                                                                                 |                                                                                                  |

|                |        |  |  |
|----------------|--------|--|--|
| <b>General</b> | Male   |  |  |
|                | Female |  |  |
| <b>Total</b>   | Male   |  |  |
|                | Female |  |  |

Data Source: AISHE, examination results declared by [affiliating university/autonomous college]

3. Faculty and administrative staff in position and training

| <b>(a) Faculty and administrative staff in position as on 30<sup>th</sup> September, [current year]</b> |                      |                 |           |                              |                     |               |                        |
|---------------------------------------------------------------------------------------------------------|----------------------|-----------------|-----------|------------------------------|---------------------|---------------|------------------------|
|                                                                                                         |                      | <b>Reserved</b> |           |                              |                     |               | <b>Unreserve<br/>d</b> |
|                                                                                                         |                      | <b>SC</b>       | <b>ST</b> | <b>MP<br/>Resident<br/>s</b> | <b>Female<br/>s</b> | <b>Others</b> |                        |
| <b>Assistant<br/>Professo<br/>r</b>                                                                     | Sanctioned           |                 |           |                              |                     |               | 06                     |
|                                                                                                         | Filled (Regular)     |                 |           |                              |                     |               | 0                      |
|                                                                                                         | Filled<br>(Contract) |                 |           |                              |                     |               | 0                      |
|                                                                                                         | Guest<br>Lecturers   |                 |           |                              |                     |               | 08                     |
| <b>Associat<br/>e<br/>Professo<br/>r</b>                                                                | Sanctioned           |                 |           |                              |                     |               | 0                      |
|                                                                                                         | Filled (Regular)     |                 |           |                              |                     |               | 0                      |
|                                                                                                         | Filled<br>(Contract) |                 |           |                              |                     |               | 0                      |
|                                                                                                         | Guest<br>Lecturers   |                 |           |                              |                     |               | 0                      |
| <b>Professo<br/>r</b>                                                                                   | Sanctioned           |                 |           |                              |                     |               | 0                      |
|                                                                                                         | Filled (Regular)     |                 |           |                              |                     |               | 0                      |
|                                                                                                         | Filled<br>(Contract) |                 |           |                              |                     |               | 0                      |
|                                                                                                         | Guest<br>Lecturers   |                 |           |                              |                     |               | 0                      |
| <b>Admin.<br/>Staff (all)</b>                                                                           | Sanctioned           |                 |           |                              |                     |               | 10                     |
|                                                                                                         | Filled (Regular)     |                 |           |                              |                     |               | 0                      |
|                                                                                                         | Filled<br>(Contract) |                 |           |                              |                     |               | 04                     |
| <b>Account<br/>ant</b>                                                                                  | Sanctioned           |                 |           |                              |                     |               | 1                      |
|                                                                                                         | Filled (Regular)     |                 |           |                              |                     |               | 0                      |
|                                                                                                         | Filled<br>(Contract) |                 |           |                              |                     |               | 0                      |

Data Source: AISHE

|                                                                                                           |
|-----------------------------------------------------------------------------------------------------------|
| <b>(b) Training of faculty and administrative staff between October 1<sup>st</sup> [previous year] to</b> |
|-----------------------------------------------------------------------------------------------------------|

| September 30 <sup>th</sup> [current year] |                     |                                    |                                                 |                |
|-------------------------------------------|---------------------|------------------------------------|-------------------------------------------------|----------------|
|                                           |                     | Leadership and management training | Training in the area of academic specialisation | Other training |
| <b>Assistant Professor</b>                | Number trained      |                                    |                                                 |                |
|                                           | Avg. number of days |                                    |                                                 |                |
| <b>Associate Professor</b>                | Number trained      |                                    |                                                 |                |
|                                           | Avg. number of days |                                    |                                                 |                |
| <b>Professor</b>                          | Number trained      |                                    |                                                 |                |
|                                           | Avg. number of days |                                    |                                                 |                |
| <b>Administrative Staff (all)</b>         | Number trained      |                                    | N/A                                             |                |
|                                           | Avg. number of days |                                    | N/A                                             |                |
| <b>Accountant</b>                         | Number trained      |                                    | N/A                                             |                |
|                                           | Avg. number of days |                                    | N/A                                             |                |

Data Source: Compiled from training certificates submitted by faculty/administrative staff

| (c) Faculty qualifications as on 30 <sup>th</sup> September, [Current Year] |                 |     |              |               |        |
|-----------------------------------------------------------------------------|-----------------|-----|--------------|---------------|--------|
|                                                                             |                 | PhD | Postgraduate | Undergraduate | Others |
| <b>Assistant Professor</b>                                                  | Regular         | 0   | 0            | 0             | 0      |
|                                                                             | Contract        | 0   | 0            | 0             | 0      |
|                                                                             | Guest Lecturers | 02  | 02           | 0             | 4      |
| <b>Associate Professor</b>                                                  | Regular         | 0   | 0            | 0             | 0      |
|                                                                             | Contract        | 0   | 0            | 0             | 0      |
|                                                                             | Guest Lecturers | 0   | 0            | 0             | 0      |
| <b>Professor</b>                                                            | Regular         | 0   | 0            | 0             | 0      |
|                                                                             | Contract        | 0   | 0            | 0             | 0      |
|                                                                             | Guest Lecturers | 0   | 0            | 0             | 0      |

Data Source: AISHE

#### 4. Student support services

|                                                                                                                                                                                |
|--------------------------------------------------------------------------------------------------------------------------------------------------------------------------------|
| <b>(a) Financial support received (from all sources) by students in the college between October 1<sup>st</sup> [previous year] to September 30<sup>th</sup> [current year]</b> |
|--------------------------------------------------------------------------------------------------------------------------------------------------------------------------------|

|         |        | Undergraduate |                     | Postgraduate |                     | PhD    |                     |
|---------|--------|---------------|---------------------|--------------|---------------------|--------|---------------------|
|         |        | Number        | Average Value (Rs.) | Number       | Average Value (Rs.) | Number | Average Value (Rs.) |
| SC      | Male   | 32            | 170670              | N/A          | NA/                 | N/A    | N/A                 |
|         | Female | 17            | 80200               | N/A          | NA/                 | N/A    | N/A                 |
| ST      | Male   | N/A           | N/A                 | N/A          | NA/                 | N/A    | N/A                 |
|         | Female | N/A           | N/A                 | N/A          | NA/                 | N/A    | N/A                 |
| General | Male   | N/A           | N/A                 | N/A          | NA/                 | N/A    | N/A                 |
|         | Female | N/A           | N/A                 | N/A          | NA/                 | N/A    | N/A                 |
| Total   | Male   | 32            | 170670              | N/A          | NA/                 | N/A    | N/A                 |
|         | Female | 17            | 80200               | N/A          | NA/                 | N/A    | N/A                 |

Data Source: AISHE

| <b>(a) Financial support received, from the DHE, by students in the college between October 1<sup>st</sup> [previous year] to September 30<sup>th</sup> [current year]</b> |        |               |                     |              |                     |        |                     |
|----------------------------------------------------------------------------------------------------------------------------------------------------------------------------|--------|---------------|---------------------|--------------|---------------------|--------|---------------------|
|                                                                                                                                                                            |        | Undergraduate |                     | Postgraduate |                     | PhD    |                     |
|                                                                                                                                                                            |        | Number        | Average Value (Rs.) | Number       | Average Value (Rs.) | Number | Average Value (Rs.) |
| SC                                                                                                                                                                         | Male   | 32            | 170670              | N/A          | NA/                 | N/A    | N/A                 |
|                                                                                                                                                                            | Female | 17            | 80200               | N/A          | NA/                 | N/A    | N/A                 |
| ST                                                                                                                                                                         | Male   | N/A           | N/A                 | N/A          | NA/                 | N/A    | N/A                 |
|                                                                                                                                                                            | Female | N/A           | N/A                 | N/A          | NA/                 | N/A    | N/A                 |
| General                                                                                                                                                                    | Male   | N/A           | N/A                 | N/A          | NA/                 | N/A    | N/A                 |
|                                                                                                                                                                            | Female | N/A           | N/A                 | N/A          | NA/                 | N/A    | N/A                 |
| Total                                                                                                                                                                      | Male   | 32            | 170670              | N/A          | NA/                 | N/A    | N/A                 |
|                                                                                                                                                                            | Female | 17            | 80200               | N/A          | NA/                 | N/A    | N/A                 |

Data Source: College records, DHE

| <b>(b) Hostel occupancy as on 30<sup>th</sup> September, [Current Year] (all hostels)</b> |        |                            |
|-------------------------------------------------------------------------------------------|--------|----------------------------|
| <b>Capacity</b>                                                                           |        | <b>Number of residents</b> |
| <b>Males:</b>                                                                             |        |                            |
| SC                                                                                        | Male   |                            |
|                                                                                           | Female |                            |
| ST                                                                                        | Male   |                            |
|                                                                                           | Female |                            |
| General                                                                                   | Male   |                            |
|                                                                                           | Female |                            |
| Total                                                                                     | Male   |                            |
|                                                                                           | Female |                            |

Data Source: Hostel register verified against fee receipts on record

| <b>(c) Hostel occupancy as on 30<sup>th</sup> September, [Current Year] (girls only hostels opened after _____)</b> |
|---------------------------------------------------------------------------------------------------------------------|
|---------------------------------------------------------------------------------------------------------------------|



| <b>Capacity</b> | <b>Number of residents</b> |
|-----------------|----------------------------|
| <b>SC</b>       |                            |
| <b>ST</b>       |                            |
| <b>General</b>  |                            |
| <b>Total</b>    |                            |

Data Source: Hostel register verified against fee receipts on record

### 5. Examination Results

| <b>(a) Examination results for [previous academic year] (undergraduate)</b> |                          |           |          |           |          |                                  |          |                |          |              |          |
|-----------------------------------------------------------------------------|--------------------------|-----------|----------|-----------|----------|----------------------------------|----------|----------------|----------|--------------|----------|
|                                                                             |                          | <b>SC</b> |          | <b>ST</b> |          | <b>Other Reserved Categories</b> |          | <b>General</b> |          | <b>Total</b> |          |
|                                                                             |                          | <b>M</b>  | <b>F</b> | <b>M</b>  | <b>F</b> | <b>M</b>                         | <b>F</b> | <b>M</b>       | <b>F</b> | <b>M</b>     | <b>F</b> |
| <b>1<sup>st</sup> year</b>                                                  | Appeared                 | 6         | 12       | 0         | 0        | 17                               | 26       | 5              | 10       | 28           | 48       |
|                                                                             | 1 <sup>st</sup> division |           |          |           |          |                                  |          | 1              |          |              |          |
|                                                                             | 2 <sup>nd</sup> Division | 3         | 6        | 0         | 0        | 6                                | 15       |                | 4        | 10           | 25       |
|                                                                             | 3 <sup>rd</sup> Division |           |          |           |          |                                  |          |                |          |              |          |
| <b>2<sup>nd</sup> year</b>                                                  | Appeared                 | N/A       | N/A      | N/A       | N/A      | N/A                              | NA/      | N/A            | N/A      | N/A          | N/A      |
|                                                                             | 1 <sup>st</sup> division | N/A       | N/A      | N/A       | NA/      | N/A                              | N/A      | N/A            | N/A      | N/A          | N/A      |
|                                                                             | 2 <sup>nd</sup> Division | N/A       | N/A      | N/A       | N/A      | N/A                              | NA/      | N/A            | N/A      | N/A          | N/A      |
|                                                                             | 3 <sup>rd</sup> Division | N/A       | N/A      | N/A       | NA/      | N/A                              | N/A      | N/A            | N/A      | N/A          | N/A      |
| <b>3<sup>rd</sup> year</b>                                                  | Appeared                 | N/A       | N/A      | N/A       | N/A      | N/A                              | NA/      | N/A            | N/A      | N/A          | N/A      |
|                                                                             | 1 <sup>st</sup> division | N/A       | N/A      | N/A       | NA/      | N/A                              | N/A      | N/A            | N/A      | N/A          | N/A      |
|                                                                             | 2 <sup>nd</sup> Division | N/A       | N/A      | N/A       | N/A      | N/A                              | NA/      | N/A            | N/A      | N/A          | N/A      |
|                                                                             | 3 <sup>rd</sup> Division | N/A       | N/A      | N/A       | NA/      | N/A                              | N/A      | N/A            | N/A      | N/A          | N/A      |

Data Source: AISHE, Examination results declared by [affiliating university/autonomous college]

| <b>(a) Examination results for [previous academic year] (postgraduate)</b> |                          |           |          |           |          |                                  |          |                |          |              |          |
|----------------------------------------------------------------------------|--------------------------|-----------|----------|-----------|----------|----------------------------------|----------|----------------|----------|--------------|----------|
|                                                                            |                          | <b>SC</b> |          | <b>ST</b> |          | <b>Other Reserved Categories</b> |          | <b>General</b> |          | <b>Total</b> |          |
|                                                                            |                          | <b>M</b>  | <b>F</b> | <b>M</b>  | <b>F</b> | <b>M</b>                         | <b>F</b> | <b>M</b>       | <b>F</b> | <b>M</b>     | <b>F</b> |
| <b>1<sup>st</sup> year</b>                                                 | Appeared                 | N/A       | N/A      | N/A       | N/A      | N/A                              | NA/      | N/A            | N/A      | N/A          | N/A      |
|                                                                            | 1 <sup>st</sup> division | N/A       | N/A      | N/A       | NA/      | N/A                              | N/A      | N/A            | N/A      | N/A          | N/A      |
|                                                                            | 2 <sup>nd</sup> Division | N/A       | N/A      | N/A       | N/A      | N/A                              | NA/      | N/A            | N/A      | N/A          | N/A      |
|                                                                            | 3 <sup>rd</sup> Division | N/A       | N/A      | N/A       | NA/      | N/A                              | N/A      | N/A            | N/A      | N/A          | N/A      |

|                            |                          |     |     |     |     |     |     |     |     |     |     |
|----------------------------|--------------------------|-----|-----|-----|-----|-----|-----|-----|-----|-----|-----|
|                            | Division                 |     |     |     |     |     |     |     |     |     |     |
| <b>2<sup>nd</sup> year</b> | Appeared                 | N/A | N/A | N/A | N/A | N/A | NA/ | N/A | N/A | N/A | N/A |
|                            | 1 <sup>st</sup> division | N/A | N/A | N/A | NA/ | N/A | N/A | N/A | N/A | N/A | N/A |
|                            | 2 <sup>nd</sup> Division | N/A | N/A | N/A | N/A | N/A | NA/ | N/A | N/A | N/A | N/A |
|                            | 3 <sup>rd</sup> Division | N/A | N/A | N/A | NA/ | N/A | N/A | N/A | N/A | N/A | N/A |

Data Source: AISHE, Examination results declared by [affiliating university/autonomous college]

6. Placement and student tracking

| <b>(a) Placement and Tracking of Students who graduated in [previous academic year] (Undergraduate)</b> |        |                                                                      |                                                                       |                        |            |                         |
|---------------------------------------------------------------------------------------------------------|--------|----------------------------------------------------------------------|-----------------------------------------------------------------------|------------------------|------------|-------------------------|
|                                                                                                         |        | Number of students who graduated in [the previous academic year] (*) | Of (*), the number of students who were successfully tracked and are: |                        |            |                         |
|                                                                                                         |        |                                                                      | Employed/ Self-employed                                               | In education/ training | Unemployed | Not in the labour force |
| <b>SC</b>                                                                                               | Male   | N/A                                                                  | N/A                                                                   | N/A                    | N/A        | N/A                     |
|                                                                                                         | Female | N/A                                                                  | N/A                                                                   | N/A                    | N/A        | N/A                     |
| <b>ST</b>                                                                                               | Male   | N/A                                                                  | N/A                                                                   | N/A                    | N/A        | N/A                     |
|                                                                                                         | Female | N/A                                                                  | N/A                                                                   | N/A                    | N/A        | N/A                     |
| <b>General</b>                                                                                          | Male   | N/A                                                                  | N/A                                                                   | N/A                    | N/A        | N/A                     |
|                                                                                                         | Female | N/A                                                                  | N/A                                                                   | N/A                    | N/A        | N/A                     |
| <b>Total</b>                                                                                            | Male   | N/A                                                                  | N/A                                                                   | N/A                    | N/A        | N/A                     |
|                                                                                                         | Female | N/A                                                                  | N/A                                                                   | N/A                    | N/A        | N/A                     |

Data Source: Records of the college placement cell

| <b>(b) Placement and Tracking of Students who graduated in [previous academic year] (Postgraduate)</b> |        |                                                                      |                                                                       |                        |            |                         |
|--------------------------------------------------------------------------------------------------------|--------|----------------------------------------------------------------------|-----------------------------------------------------------------------|------------------------|------------|-------------------------|
|                                                                                                        |        | Number of students who graduated in [the previous academic year] (*) | Of (*), the number of students who were successfully tracked and are: |                        |            |                         |
|                                                                                                        |        |                                                                      | Employed/ Self-employed                                               | In education/ training | Unemployed | Not in the labour force |
| <b>SC</b>                                                                                              | Male   | N/A                                                                  | N/A                                                                   | N/A                    | N/A        | N/A                     |
|                                                                                                        | Female | N/A                                                                  | N/A                                                                   | N/A                    | N/A        | N/A                     |
| <b>ST</b>                                                                                              | Male   | N/A                                                                  | N/A                                                                   | N/A                    | N/A        | N/A                     |
|                                                                                                        | Female | N/A                                                                  | N/A                                                                   | N/A                    | N/A        | N/A                     |

|                |        |     |     |     |     |     |
|----------------|--------|-----|-----|-----|-----|-----|
| <b>General</b> | Male   | N/A | N/A | N/A | N/A | N/A |
|                | Female | N/A | N/A | N/A | N/A | N/A |
| <b>Total</b>   | Male   | N/A | N/A | N/A | N/A | N/A |
|                | Female | N/A | N/A | N/A | N/A | N/A |

Data Source: Records of the college placement cell

### 7. PhDs Awarded

| <b>Number of PhDs awarded between October 1<sup>st</sup> [previous year] to September 30<sup>th</sup> [current year]</b> |               |
|--------------------------------------------------------------------------------------------------------------------------|---------------|
| <b>Discipline Group</b>                                                                                                  | <b>Number</b> |
| Arts                                                                                                                     | N/A           |
| Commerce                                                                                                                 | N/A           |
| Criminology and Forensic Science                                                                                         | N/A           |
| Cultural Studies                                                                                                         | N/A           |
| Defence Studies                                                                                                          | N/A           |
| Design                                                                                                                   | N/A           |
| Disability Studies                                                                                                       | N/A           |
| Education                                                                                                                | N/A           |
| Fashion Technology                                                                                                       | N/A           |
| Fine Arts                                                                                                                | N/A           |
| Fisheries Science                                                                                                        | N/A           |
| Foreign Languages                                                                                                        | N/A           |
| Gandhian Studies                                                                                                         | N/A           |
| Home Science                                                                                                             | N/A           |
| Indian Languages                                                                                                         | N/A           |
| IT & Computer                                                                                                            | N/A           |
| Journalism and Mass Communication                                                                                        | N/A           |
| Law                                                                                                                      | N/A           |
| Library and Information Science                                                                                          | N/A           |
| Linguistics                                                                                                              | N/A           |
| Management                                                                                                               | N/A           |
| Marine Science and Oceanography                                                                                          | N/A           |
| Oriental Learning                                                                                                        | N/A           |
| Physical Education                                                                                                       | N/A           |
| Religious Studies                                                                                                        | N/A           |
| Science                                                                                                                  | N/A           |
| Social Science                                                                                                           | N/A           |
| Social Work                                                                                                              | N/A           |
| Women Studies                                                                                                            | N/A           |
| Literature                                                                                                               | N/A           |
| Other                                                                                                                    | N/A           |
| <b>All disciplines</b>                                                                                                   | N/A           |

Data Source: AISHE

8. Research and consultancy

| <b>Revenue generated through externally funded research and consultancies over [previous financial year]</b> |                                  |                                            |
|--------------------------------------------------------------------------------------------------------------|----------------------------------|--------------------------------------------|
| <b>Discipline Group</b>                                                                                      | <b>Number of active projects</b> | <b>Total Revenue Generated (Rs. lakhs)</b> |
| Arts                                                                                                         |                                  |                                            |
| Commerce                                                                                                     |                                  |                                            |
| Criminology and Forensic Science                                                                             |                                  |                                            |
| Cultural Studies                                                                                             |                                  |                                            |
| Defence Studies                                                                                              |                                  |                                            |
| Design                                                                                                       |                                  |                                            |
| Disability Studies                                                                                           |                                  |                                            |
| Education                                                                                                    |                                  |                                            |
| Fashion Technology                                                                                           |                                  |                                            |
| Fine Arts                                                                                                    |                                  |                                            |
| Fisheries Science                                                                                            |                                  |                                            |
| Foreign Languages                                                                                            |                                  |                                            |
| Gandhian Studies                                                                                             |                                  |                                            |
| Home Science                                                                                                 |                                  |                                            |
| Indian Languages                                                                                             |                                  |                                            |
| IT & Computer                                                                                                |                                  |                                            |
| Journalism and Mass Communication                                                                            |                                  |                                            |
| Law                                                                                                          |                                  |                                            |
| Library and Information Science                                                                              |                                  |                                            |
| Linguistics                                                                                                  |                                  |                                            |
| Management                                                                                                   |                                  |                                            |
| Marine Science and Oceanography                                                                              |                                  |                                            |
| Oriental Learning                                                                                            |                                  |                                            |
| Others / Inter-disciplinary                                                                                  |                                  |                                            |
| Physical Education                                                                                           |                                  |                                            |
| Religious Studies                                                                                            |                                  |                                            |
| Science                                                                                                      |                                  |                                            |
| Social Science                                                                                               |                                  |                                            |
| Social Work                                                                                                  |                                  |                                            |
| Veterinary and Animal Sciences                                                                               |                                  |                                            |
| Women Studies                                                                                                |                                  |                                            |
| <b>All disciplines</b>                                                                                       |                                  |                                            |

Data Source: College/university records

| <b>Number of papers published in peer-reviewed journals between October 1<sup>st</sup> [previous year] to September 30<sup>th</sup> [current year]</b> |                                   |                                                  |
|--------------------------------------------------------------------------------------------------------------------------------------------------------|-----------------------------------|--------------------------------------------------|
| <b>Discipline Group</b>                                                                                                                                | <b>Number of papers published</b> | <b>Number of published papers through cross-</b> |
|                                                                                                                                                        |                                   |                                                  |

|                                   | <b>International Journals</b> | <b>National Journals</b> | <b>institute research collaboration</b> |
|-----------------------------------|-------------------------------|--------------------------|-----------------------------------------|
| Arts                              |                               |                          |                                         |
| Commerce                          |                               |                          |                                         |
| Criminology and Forensic Science  |                               |                          |                                         |
| Cultural Studies                  |                               |                          |                                         |
| Defence Studies                   |                               |                          |                                         |
| Design                            |                               |                          |                                         |
| Disability Studies                |                               |                          |                                         |
| Education                         |                               |                          |                                         |
| Fashion Technology                |                               |                          |                                         |
| Fine Arts                         |                               |                          |                                         |
| Fisheries Science                 |                               |                          |                                         |
| Foreign Languages                 |                               |                          |                                         |
| Gandhian Studies                  |                               |                          |                                         |
| Home Science                      |                               |                          |                                         |
| Indian Languages                  |                               |                          |                                         |
| IT & Computer                     |                               |                          |                                         |
| Journalism and Mass Communication |                               |                          |                                         |
| Law                               |                               |                          |                                         |
| Library and Information Science   |                               |                          |                                         |
| Linguistics                       |                               |                          |                                         |
| Management                        |                               |                          |                                         |
| Marine Science and Oceanography   |                               |                          |                                         |
| Oriental Learning                 |                               |                          |                                         |
| Others / Inter-disciplinary       |                               |                          |                                         |
| Physical Education                |                               |                          |                                         |
| Religious Studies                 |                               |                          |                                         |
| Science                           |                               |                          |                                         |
| Social Science                    |                               |                          |                                         |
| Social Work                       |                               |                          |                                         |
| Women Studies                     |                               |                          |                                         |
| <b>All disciplines</b>            |                               |                          |                                         |

Date Source: College records based on published papers submitted by faculty

9. NAAC accreditation and UGC autonomy

|                             | <b>Date of Application (LOI &amp; SSR submitted)</b> | <b>Date on which accreditation was received</b> | <b>Grade</b> | <b>Valid till</b> |
|-----------------------------|------------------------------------------------------|-------------------------------------------------|--------------|-------------------|
| <b>1<sup>st</sup> Cycle</b> |                                                      |                                                 |              |                   |
| <b>2<sup>nd</sup> Cycle</b> |                                                      |                                                 |              |                   |
| <b>3<sup>rd</sup> Cycle</b> |                                                      |                                                 |              |                   |

Date of submission of the Annual Quality Assurance Report for the current year:  
 \_\_\_\_\_nil

Does the college have currently valid UGC autonomy? \_\_\_\_\_. If yes, by  
 order number \_\_\_\_\_, dated \_\_\_\_\_.

10. Institutional Trends

| Variable                                                                                                  | Baseline Value | [Year 1] | [Year 2] | [Year 3] | [Year 4] | Current Year |
|-----------------------------------------------------------------------------------------------------------|----------------|----------|----------|----------|----------|--------------|
| Percentage of sanctioned seats in the 1 <sup>st</sup> year filled (undergraduate, all categories)         | 100%           | 79%      | 55%      |          |          |              |
| Percentage of sanctioned seats in the 1 <sup>st</sup> year filled (postgraduate, all categories)          |                |          |          | ]        |          |              |
| Transition rate from the 1 <sup>st</sup> year to the 2 <sup>nd</sup> year (undergraduate, all categories) | 100%           |          | 60%      |          |          |              |
| On-time graduation rate (undergraduate, all categories)                                                   | N/A            |          |          |          |          |              |
| Transition rate from the 1 <sup>st</sup> year to the 2 <sup>nd</sup> year (post graduate, all categories) | N/A            |          |          |          |          |              |
| On-time graduation rate (postgraduate, all categories)                                                    | N/A            |          |          |          |          |              |
| Regular faculty in position rate (all levels, reserved categories)                                        | 100%           |          |          |          |          |              |
| Regular faculty in position rate (all levels, unreserved categories)                                      | 100%           |          |          |          |          |              |
| Percentage of regular faculty with PhDs (all levels)                                                      | 100%           |          |          |          |          |              |

|                                                                                              |     |  |  |  |  |  |
|----------------------------------------------------------------------------------------------|-----|--|--|--|--|--|
| Employment rate of graduates from the previous academic year (undergraduate, all categories) | N/A |  |  |  |  |  |
| Employment rate of graduates from the previous academic year (postgraduate, all categories)  | N/A |  |  |  |  |  |
| Percentage of total revenue generated through externally funded research                     |     |  |  |  |  |  |
| Number of papers published in peer-reviewed, international journals                          | N/A |  |  |  |  |  |

Source: Tables under section 1-8.

### 11. Financial Reports

Name and registration number of the auditor Miss Jamila lokhandwala

Number of audit observations recorded by the auditor nil

Number of audit responses found satisfactory, as certified by the project directorate\_\_\_\_\_.

Certified audit reports as per the standard Chart of Accounts to be attached.

### 12. All India Survey of Higher Education

Date on which all applicable fields of the Data Collection Format for the All India Survey of Higher Education were completed and submitted 16/02/2017

#### Instructions

- All data is to be reported as on 30<sup>th</sup> September of the current year.
- Postgraduate courses refer to courses at the Masters and MPhil level.
- The number of sanctioned seats is the number of students the college is authorized, by the UGC/DHE/affiliating University, to admit in the first year of its degree programs.
- The number of sanctioned faculty posts is the number of faculty the college is authorized, by the UGC/DHE/affiliating University, to recruit on a full-time basis.
- Enrolment is defined as the number of students who have paid their admission fees for joining a degree program by September 30 of the respective academic year.
- Admission is defined as the number of students who have paid their admission fees for joining a degree program, in the first year, by September 30 of the respective academic year and who have never been enrolled in that degree program previously.
- Other Reserved Categories include all categories of students (for e.g. sports quota, extracurricular quota, residents of Jammu and Kashmir etc.) for whom a fixed percentage of sanctioned seats are reserved.

- Examination results are to be reported for examinations held in the previous academic year, and the results for which were declared by 30<sup>th</sup> September of the current year.
- Allowed to keep terms refers to students who did not pass all subjects in the previous year but were allowed to transition to the next year of their respective degree programs.
- Regular faculty refers to faculty employed on open-ended, full-time contracts as per UGC norms.
- Contract faculty refers to faculty employed on fixed term, full-time contracts as per UGC norms.
- Guest Lecturers refers to faculty employed on a per lecture or per day basis as per UGC norms.
- Data on scholarships is to be reported on all scholarships awarded between 1<sup>st</sup> October of the previous year and 30<sup>th</sup> September of the current year.
- A hostel seat is considered occupied if a student has been allotted a seat in the hostel and the student, to whom the seat was allotted, has paid the hostel fee for the current academic year.
- Examination results refers to the average score obtained by a student, in the respective academic year, across all exams that are used to assess whether the student has met the requirement of the degree program in which he/she is enrolled.
- Student tracking refers to having up to date contact information (mobile phone and/or email address) and status (employment, unemployed, in formal education or training, not in the labour market/other) for each student for up to six from the end of the academic year when the student passed out (graduated).
- Externally funded research and consultancies refer to research and/or development funded through consultancy contracts or partnerships with a sponsor or purchaser who is external to the institution.
- A peer-reviewed journal is one that subjects an author's research to review and evaluation by others who are experts in the same field, before the research is published.
- An international journal is one that has an International Standard Serial Number (ISSN) issued by the ISSN International Centre.
- A paper is said to be published through cross-institute research collaboration if the primary affiliation of at least two authors is to different colleges/institutions.
- The institutional performance indicators common across all institutions can be found in the PIP. Institution-specific performance indicators can be found in the MOU signed between the Institution and the Department of Higher Education.
- The standard Chart of Accounts refers to the standard format for audit reports as notified by the Department of Higher Education through its orders.