



# MAHARANI LAXMI BAI GOVT. COLLEGE OF EXCELLENCE GWALIOR (M.P.) INDIA

## Annual Report 2016-17

- **Name of the college:**  
Maharani Laxmi Bai Government College of Excellence, Gwalior
- **Place of the college :**  
Urban Area
- **District :**  
Gwalior
- **Division :**  
Gwalior
- **Year of establishment of college**  
July 1887
- **Name and Contact details( Mail id , Phone ) of Principal :**  
Dr H.S. Shrivastava  
Principal,  
Maharani Laxmi bai Govt. College of Excellence Gwalior  
Contact no 0751-2372199  
E-mail id: hegmlbaaccgwa@mp.gov.in
- **Name , Post and Contact details of ( mail id, Phone no.) of Reporting In charge**  
Dr Ayub Khan,  
Professor (Sociology),  
Deptt of Sociology  
Maharani Laxmi bai Govt. College of Excellence Gwalior.  
E mail id auyb3565@gmail.com,9425122781
- **Date of report submission**  
17/06/2017

## Part I

**1. The Principal's Report (2 pages)-** Highlights the key activities, events, and successes of the past year and briefly describes major new initiatives to be undertaken over the next year.

Maharani Laxmi Bai Govt. College of Excellence, Gwalior is one of the oldest and prestigious seats of learning in Madhya Pradesh. Affiliated to Jiwaji University, Gwalior, Madhya Pradesh established in July 1887, the college stands for quality and excellence. It has been awarded A Grade in Cycle 2 by National Academic Accreditation Council in Dec. 2014.

The quest of excellence is a ceaseless process and in this process evaluation and re-evaluation play an important part. During the last five years, the management of the college has examined and assessed the functioning of the institution, in order to fulfill promises made to its stakeholders. Adequate facilities, right environment, strong infrastructure, and empowered staff, has helped us to achieve our goals.

❖ The College is well-equipped with laboratory equipment and modern technological devices like computers, internet, fax and e-mail facilities. The College's proposal for campus-wide networking is under the consideration of the UGC. The College has recently created a Computer Lab and Language Lab.

❖ The Central Library of the College has more than 1.6 lakh books and is one of the richest libraries of its kind.

❖ The College is a multi-faculty college which runs courses in the faculties of **Arts, Social Sciences, Commerce, Business Management and Law**. There are sixteen departments of different faculties in the College, out of which fifteen are post-graduate departments. All the departments are housed in well-furnished and spacious rooms. Various departments have their departmental libraries for post-graduate students. These department libraries are also well provided with valuable books and research journals. Besides doctoral research, UGC sponsored major and minor research projects are being carried out by almost all the departments of the College.

❖ The College has an online help center for students. This centre is a recognized

The College is one of the most important research centers of Jiwaji University, Gwalior for doctoral and post-doctoral researchers. Scholars from Madhya Pradesh and other states are benefitted from the research facilities available here.

The College offers many specialized courses like M.B.A., B.B.A., B.Com (Computer), M.L.I.Sc., B.L.I.Sc., LL.M. and Law Honours. All the courses offered by the College have been thoroughly revised and updated on the bases of UGC's recently provided "Model Curricula"

In tune with the directives of the UGC and the State Government, the College has adopted the semester system of examination with effect from the academic session 2003-04.

Following the State Government's policy for 'Colleges of Excellence' the College admits students with minimum 60% marks in the qualifying examination.

With this background, the College has made ambitious plan for its further growth and development. In this respect, the Govt. of M.P. sanctioned Rs. 5 Crore for development of this college for upgrading the College to the status of Premier Institute. Through its relentless pursuit of excellence, the College strives to instill into its students, lofty ambitions.

## 2. Overview (1 page)

### (i) Vision, Mission and Objectives of the college

Leadership ensures that the vision and mission of the institution is in tune with the objectives of the Higher Education policies of the Nation.

**Mission Statement** – While setting higher standards in dissemination, extension and creation of knowledge as a matter of routine, we train our students for playing worthy role in nation building, meeting the challenges of times and leading the society. Simultaneously we initiate them to the best practices of ethics and humanitarianism. In all these endeavors, excellence is our baseline.

Institution follows the guidelines issued by the government mentioned in the prospectus. Its vision and mission ensures that the institution will continuously strive:

- To achieve excellence in and to keep up the honour and ideal values of higher education.
- To prepare the students for various competitive examinations.
- To prepare the students for admission to the educational institutions of national and international standard.
- To prepare the students for successfully entering every walk of life.
- To inculcate in the student an in-depth understanding of the subject.
- To develop the power of reasoning and scientific outlook in the student.
- To facilitate continuous growth of the student's aptitude for and curiosity about the subject of his / her study.

○ .

### (iii) History of the college with significant milestones

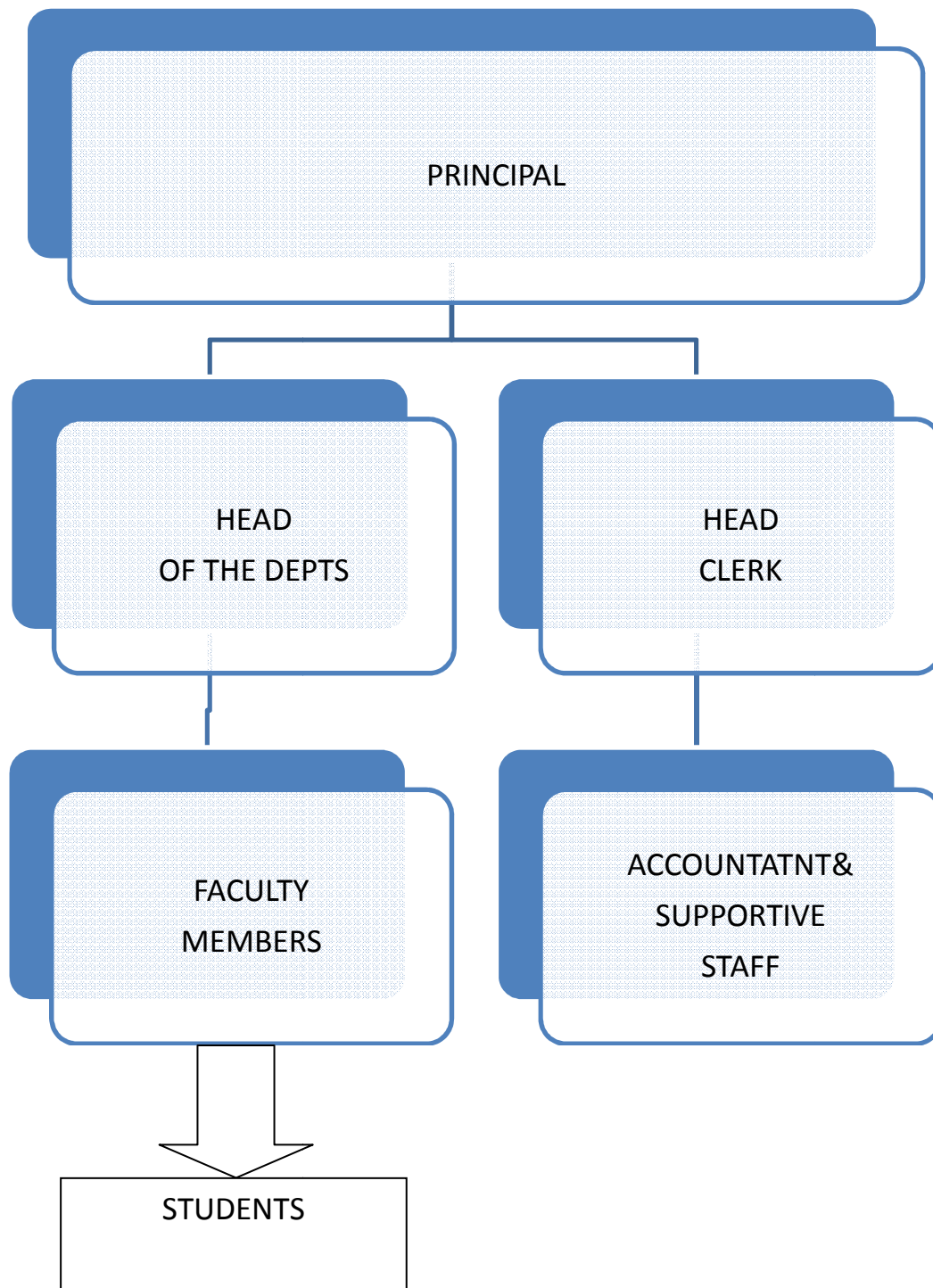
The College has an illustrious history. The College was established in 1846 as 'Lashkar Madarsa', which later came to be known as the prestigious Victoria College of Gwalior in 1887. After India's independence, it was renamed 'Maharani Laxmi Bai Arts and Commerce College'. In the long course of its history, it remained affiliated to various universities, viz. Calcutta, Allahabad, Agra and Ujjain, and now it is affiliated to Jiwaji University, Gwalior. During the Seventh Plan period, the UGC granted it the status of an autonomous college on February 20, 1988 enabling it to innovate in the area of curriculum development, teaching and examinations. The College passed another milestone in its history in 2002 when it was recognized by the State Government as an **Institute for Excellence in Higher Education**. Vigorous efforts are afoot for further up-gradation of the College to Premier Institute.

- ❖ The College offers many specialized courses like M.B.A., B.B.A., B.Com (Computer), M.L.I.Sc., B.L.I.Sc., LL.M. and Law Honours. All the courses offered by the College have been thoroughly revised and updated on the bases of UGC's recently provided "Model Curricula".
- ❖ In tune with the directives of the UGC and the State Government, the College has adopted the semester system of examination with effect from the academic session 2003-04.
- ❖ Following the State Government's policy for 'Colleges of Excellence' the College admits students with minimum 60% marks in the qualifying examination.
- ❖ The teaching staff of the College, which is appointed by the State Government after selection by the State Govt. consists of eminent scholars of various subjects.
- ❖ Number of sports, cultural and co-curricular activities are organized by the College for all-round development of the student. The College has three units of N.C.C. (Naval Wing), one unit of N.C.C. (Army Wing) and two units of N.S.S.
- ❖ Eminent persons who are alumni of the College are: Shri Atal Bihari Vajpayee (the-ex-Prime Minister of India), Shri Shiv Dayal Shrivastava (former Chief Justice of M.P. High Court), Captain Roop Singh (a renowned hockey player), Dr. U.S. Dharkar (a renowned neuro-surgeon), and Brigadier Kailash Prasad Pandey (a winner of Mahavir Chakra), and Dr. Shiv Mangal Singh 'Suman' (Former Vice-Chancellor of Vikram University, Ujjain).

### 3 Senior Management Team and Board of Governors

Lists the members of the senior management team (Principal, Registrar, Deans etc.) and members of the Board of Governors including their designations and professional backgrounds.

#### Administrative Hierarchy



### 3 Admission Statistics

- The number of applicants at the UG and PG level who ranked the college as their 1<sup>st</sup>, 2<sup>nd</sup> and 3<sup>rd</sup> preference, the number of applications received for PhD courses, and the number of students admitted at each level as per the following format.

Applications	UG	PG	PhD
Applications that ranked the college as the 1 <sup>st</sup> preference			NA
Applications that ranked the college as the 2 <sup>nd</sup> preference			
Applications that ranked the college as the 3 <sup>rd</sup> preference			
Total number of applications received			
Number of students admitted	<b>2945</b>	<b>416</b>	<b>632</b>

Data Source: E-pravesh portal, records of the affiliating university

- A brief demographic profile of students admitted (in terms of gender, caste, whether from MP etc.)

Name of the Course	Category												% of students from the State	% of students from other states
	SC		ST		OBC		UR		PH		MIN.			
	M	F	M	F	M	F	M	F	M	F	M	F		
B.A.	163	20	09	02	339	30	206	25	0	0	20	01	98.3	1.7
B.B.A.	06	00	01	0	13	05	36	05	0	0	05	01	97.2	2.8
B.COM.	124	16	09	02	254	33	568	68	01	0	23	03	99.1	0.9
B.A L.L.B.	38	18	07	02	55	29	72	69	0	0	06	06	97.8	1.2
L.L.B.	60	43	04	01	118	51	196	116	0	0	09	14	99.6	0.4
Lib.Science	01	02	0	0	1	03	03	09	0	0	01	0	100.0	0.0
M.COM	14	02	0	02	06	0	16	10	01	0	0	0	99.6	0.4
M.A (11 sub.)	72	24	02	0	35	11	32	22	01	0	06	01	97.9	2.1
M.B.A	0	02	1	0	07	05	9	11	0	0	0	01	97.6	2.4
L.L.M	07	13	00	0	06	05	08	20	0	0	01	01	97.3	2.7

### 3. Academic Programs: Core Programs - UG & PG

#### Core programs at UG level

Stream	Name of the Core Program	Eligibility	Optional subjects
Arts	B.A	10+2 from a recognized Board OR 10+2 with relevant vocational course from M.P. Board	Foundation course + a group of 3 optional subjects
Commerce	B.COM.	10+2 from a recognized Board OR 10+2 with relevant vocational course from M.P. Board	Foundation course + all compulsory papers from any One of the two groups i.e. taxation and management
Management	B.B.A.	10+2 from a recognized Board OR 10+2 with relevant vocational course from M.P. Board	All Compulsory papers
Law	B.A.L.L.B.	10+2 from a recognized Board OR 10+2 with relevant vocational course from M.P. Board	All Compulsory papers
Law	L.L.B.	Graduation in any stream	All Compulsory papers
Library Science	B.Lib.	Graduation in any stream	All Compulsory papers



### Core Options at PG level

<b>Faculty</b>	<b>Name of the Core Program</b>	<b>Eligibility</b>	<b>Subject Options</b>
Arts	M.A (SOCIOLOGY)	<i>3 year Degree course in any faculty/ Honours degree course in same subject</i>	<i>Compulsory+ optional papers</i>
	M.A (ECONOMICS)	<i>3 year Degree course in any faculty/ Honours degree course in same subject</i>	<i>Compulsory+ optional papers</i>
	M.A (GEOGRAPHY)	<i>3 year Degree course in any faculty/ Honours degree course in same subject</i>	<i>Compulsory+ optional papers</i>
	M.A (MIL.SCIENCE)	<i>3 year Degree course in any faculty/ Honours degree course in same subject</i>	<i>Compulsory+ optional papers</i>
	M.A (POL. SCIENCE)	<i>3 year Degree course in any faculty/ Honours degree course in same subject</i>	<i>Compulsory+ optional papers</i>
	M.A (PSYCHOLOGY)	<i>3 year Degree course in any faculty/ Honours degree course in same subject</i>	<i>Compulsory+ optional papers</i>
	M.A (HINDI)	<i>3 year Degree course in any faculty/ Honours degree course in same subject</i>	<i>Compulsory+ optional papers</i>
	M.A (ENGLISH)	<i>3 year Degree course in any faculty/ Honours degree course in same subject</i>	<i>Compulsory+ optional papers</i>
	M.A (SANSKRIT)	<i>3 year Degree course in any faculty/ Honours degree course in same subject</i>	<i>Compulsory+ optional papers</i>
	M.A (PHILOSOPHY)	<i>3 year Degree course in any faculty/ Honours degree course in same subject</i>	<i>Compulsory+ optional papers</i>
	M.A (HISTORY)	<i>3 year Degree course in any faculty/ Honours degree course in same subject</i>	<i>Compulsory+ optional papers</i>
COMMERCE	M.COM.	<i>B.COM</i>	<i>Compulsory+ optional papers</i>
LIBRARY SC.	M.LIB	<i>B.LIB.</i>	<i>Compulsory papers</i>
LAW	L.L.M	<i>L.L.B</i>	<i>Compulsory+ optional papers</i>

### Ph.D. Programs

S.no.	Subject	Eligibility	No. of scholars registered
1	COMMERCE	Through Entrance Exam/UGC /SET	18
2	ECONOMICS	Through Entrance Exam/UGC /SET	19
3	ENGLISH	Through Entrance Exam/UGC /SET	116
4	GEOGRAPHY	Through Entrance Exam/UGC /SET	43
5	HINDI	Through Entrance Exam/UGC /SET	98
6	HISTORY	Through Entrance Exam/UGC /SET	70
7	LAW	Through Entrance Exam/UGC /SET	16
8	LIBRARY SCIENCE	Through Entrance Exam/UGC /SET	32
9	MILITARY SC.	Through Entrance Exam/UGC /SET	12
10	PHILOSOPHY	Through Entrance Exam/UGC /SET	10
11	POLITICAL SC.	Through Entrance Exam/UGC /SET	64
12	PSYCHOLOGY	Through Entrance Exam/UGC /SET	08
13	SANSKRIT	Through Entrance Exam/UGC /SET	35
14	SOCIOLOGY	Through Entrance Exam/UGC /SET	68
15	MANAGEMENT	Through Entrance Exam/UGC /SET	23

**PG Diploma/ Diploma/ Certificate/ Self-financed/ Skill based Vocational/  
Short term courses**

Name of the Course	Department	Duration	Fees	Seats
NIL	NIL		NIL	NIL

**4. Academic Calendar 2016-2017 -**

Academic Work	First/ Third/ Fifth Semester	Second/ Fourth/ Sixth Semester
Orientation Classes/Zero Classes/SWOT analysis	01/07/2016 -13/07/2016 (10 days)	02/01/2017 (01 day)
Teaching and Continuous Comprehensive Evaluation	14/07/2016- 07/11/2016 (90 days)	03/01/2017- 25/04/2017 (90 days)
CCE Schedule	IV Week of September 2016	II Week of March 2017
Preparation Leave	08/11/2016 -14/11/2016 (07 days)	26/04/2017-27/04/2017 (02 days)
Practical Exams (Graduation/Post Graduation)	15/10/2016-07/11/2016	25/03/2017-25/04/2017
Semester and ATKT Exams	15/11/2016-21/12/2016	28/04/2017-26/05/2017
Declaration of Examination Results	-----	-----
Semester Break (for students)	22/12/2016-31/12/2016 (10days)	27/05/2016-30/06/2017 (35 days)
Semester Break (for teachers)	22/12/2016-31/12/2016 (10days)	27/05/2016-15/06/2017 (20 days)

## 5. The Student Experience

Briefly describes student life in the college:

- Infrastructural facilities available to students - Classrooms, Smart classrooms, laboratories and equipment, Common Research Lab, Hostel; Canteen; Garden; Students common room, Auditorium, Sports Complex & other facilities

The college already has a vast campus and spacious buildings sufficient for its present needs. However, keeping in view the long-term planning, the college administration with the help of Jan Bhagidari Samiti and grants has embarked upon massive construction activities. To keep pace with global challenges and competition, the college has vast resources of ICT.

For effective teaching and learning, the college has adopted modern methods of teaching, involving procedures like group discussions, seminars and it uses computer and language labs.

### **Detail the facilities available for curricular and co-curricular activities:**

The college is located in the heart of the city. The college has a vast campus of approximately 22 acres. The facilities available for:

#### **a) Curricular and co-curricular activities**

❖ Classrooms/ Tutorial Spaces	80
❖ Lecture Halls	02
❖ Laboratories Psychology Lab	01
❖ Geography Lab	01
❖ Strategic and Defence Studies Lab	01
❖ Computer Labs	04
❖ Language Lab	01

#### **b) Facilities/ equipment for teaching**

❖ Overhead Projects	
❖ Audio-Visual Aids	
❖ Televisions	
❖ Computers (in Labs and Departments)	
❖ Xerox Machines	
❖ V.C.Rs	
❖ Cameras (Still and Video)	
❖ Audio Players	
❖ Smart Classes	02
❖ Multimedia Projector	
❖ Internet Facility (Wi-Fi)	
❖ Learning and Research INFLIB-NET (N-LIST)	
❖ Seminar Hall	02

**c)Extra-curricular activities**

- ❖ Sports, Outdoor and Indoor Games
- ❖ Lecture Halls
- ❖ Football Ground
- ❖ Sports Ground for Athletic Competitions
- ❖ Laboratories Indoor Badminton Court
- ❖ Cricket Ground
- ❖ Basketball Court
- ❖ Table Tennis Court
- ❖ Indoor Stadium
- ❖ Sports Complex
- ❖ Public Speaking/ Cultural Activities
- ❖ Ranganathan Hall for Activities
- ❖ Harisingh Darshan Singh Hall for Cultural Programs
- ❖ 02 NCC Rooms and
- ❖ 01 NSS Room

The college has a sports complex, an indoor stadium, a badminton hall. The college also has enough sports equipment and an auditorium. The institute also has 3 NCC rooms and 1 NSS room. Students' Security Insurance Scheme operates by New India Insurance Company Ltd. The scheme is compulsory. The college has a Language Lab for Communication Skills Development.

All the buildings in the premises have ramps for easy mobility of differentlyabled Students

**d)Hostel Facility**

One Hostel Building of the college is under renovation by PWD.

Library as a learning resource- advisory committee, its composition, facilities & services (e & print), annual improvement initiatives

The Central Library of the College has more than 1.6 lakh books and is one of the richest libraries of its kind.

There is a Library Advisor Committee, which works under the supervision of the Principal in co-ordination with the librarian. The committee plans development activities of the library including maintenance, expansion, purchase and library reforms. Dr. K. S. Rathore is the Convener of this Committee

**Total area of the library (in Sq. Mts.)** – 6000 sq. ft. in addition to the Departmental Libraries.

Library holding	2016		
	Number		Total Cost
Text books	93,647		1989611
Reference Books	62,791		
Journals/ Periodicals	70		
e-resources	Nil		
Newspapers	Daily	06	33,600/-
	Weekly	02	2,080/-

- Specific days are fixed for the UG students for issuing books.
- Books and stationary from the book bank are distributed to the SC/ST students by the library staff.
- Open Access facility is a facility which provides supports to teachers.
- Library staff informs the teachers about the new arrivals in the library.
- The library staff helps physically challenged students and staff members in selecting books and issuing them on priority basis.

✓ **Financial assistance ( scholarships/ schemes for SC/ST/OBC/ minority, Group & Health Insurance Schemes)**

About 60% of the students enrolled in the college, belong to SC/ST and OBC categories. These students receive scholarships/ freeships either from state and central governments under various schemes. Institution provided financial aid to the poor and needy students of the college, not belonging to the above mentioned categories. The 'Student Welfare and Financial Assistance Committee' is designated to disburse the aid in time

**Personal enhancement & development schemes- NCC, NSS, Facilities for physically challenged & slow learners; Tutor-Guardian Scheme, Grievance Redressal Cell, Entrepreneurship Cell, Remedial classes, Career Guidance Cell.**

The academic performance of the students at the risk of drop-out rate is measured by the faculty through Classroom interactions and CCE (Continuous Comprehensive Evaluation).

On the basis of the performance of the students in class, weak and bright students are identified. 'Special classes for weak students' are conducted.

Remedial classes for students from weaker sections of the society (SC/ ST/ OBC) are conducted in every session

The views of students, faculty, parents and alumni are solicited through direct interaction and formal feedback received from them. The Grievance Redressal Cell, the Student Welfare Committee receive grievances and complaints from the students and provide prompt redressal. The Staff Council meetings held periodically help in provide platform for the staff to express their views on quality enhancement

Extra care is taken for differently-abled students.

**Extracurricular activities: Calendar of activities (Sports, Youth Festival, cultural and literary events), Achievements, Awards**

Range of activities available to the students are:

**Sports** – athletics, football, volleyball, badminton, cricket, boxing, martial arts, kabaddi, kho-kho, handball, basketball, chess, wrestling, carom, table tennis, lawn tennis, swimming, soft ball.

**Extracurricular activities** – Mock Parliament, NCC (Army and Naval Units), NSS (two units with 210 volunteers), Red Cross Club, Legal Aid Clinic, Literary and Cultural Activities, Swami Vivekanand Employment Guarantee Cell, Book Club, Creative Writing Club.

**Activities under Youth Festival** – Story writing, Essay Competition, Poetry Writing and Recitation, Extempore, Elocution, Debate, Salad Decoration, Flower Arrangement, Mehendi, Cooking, Gift Packing, Fancy Work, Cartoon making, Clay modeling, Spot Painting, Poster Making, Rangoli, Collage, Semi-classical singing, Classical Singing, Quiz, Classical Dance (Solo), Folk Dance

**Major student welfare initiatives over the past year**

The views of students, faculty, parents and alumni are solicited through direct interaction and formal feedback received from them. The Grievance Redressal Cell, the Student Welfare Committee receive grievances and complaints from the students and provide prompt redressal. The Staff Council meetings held periodically help in provide platform for the staff to express their views on quality enhancement



- Extension Activities

The College organizes its extension and outreach programs as per the academic calendar provided by the Madhya Pradesh Government and University. The College receives 12,000 Rs. per year for extension activities under NSS

The extension activities of the college help establish better connection between the institution and the community. Due to these activities, the college is not an isolated ivory tower of research but a contributing part of the community around it. Organizations like Bharat Vikas Parishad, Red Cross Society, Sanskar Bharati, Amar Jyoti Charitable Trust, Alumni Association, Madhav Andhashram, Mercy Home and other eminent persons from the society contribute to community development.

The college Red Cross Society organizes Blood Donation Camps with the help of the students.

Bharat Vikas Parishad organizes Tree Plantation Camps in which the students also come out with great learning experience.

Through the activities of Amar Jyoti Charitable Trust, the members of the community are sensitized towards the issues of the physically challenged people.

Eminent personalities are invited to deliver lectures on human rights and women empowerment

## **6. Student Achievements**

Highlights the most significant academic and non-academic achievements of students over the past year. This can include major academic awards and scholarships received student research, and sports and other extracurricular activities. Focuses, in particular, on profiling

top achievers and describing how resources provided by the college helped these students succeed.

## ACADEMIC

- Merit**

S.no	Name of the award/ medal/ meritorious scholarship	Name of the recipient	Class	Area of achievement
1	Gold Medal	Azan Ayub	B.A	Highest Marks in Univeristy
2	Gold Medal	Apeksha Pandey	L.L.B	Highest Marks in Univeristy
3	Gold Medal	Divya Tripathi	M.A Sanskrit	Highest Marks in Univeristy
4	Gold Medal	Dilip Sharma	M.A Philosophy	Highest Marks in Univeristy
5	Gold Medal	Prasoon Dhakad	M.A History	Highest Marks in Univeristy

- Research scholarship/ award**

S.no	Name of the scholarship award/	Name of the recipient	Class	Area of research
1	JRF	-	-	21 STUDENTS
2	Rajeev Gandhi Felloship	-	-	11 STUDENTS
3	University Scholarship	-	-	05 STUDENTS
4	ICHR Travel Grant	-	-	07 STUDENTS

## SPORTS

- Participation**

S.no	Name of the event	Division Level	State Level	University/ National Level	International Level
1	Football	✓		✓	
2	Hand ball			✓	
3	Boxing	✓			
4	Chess	✓			
5	Kho-kho	✓		✓	
6	badminton	✓			

7	Hocky	✓		✓	
---	-------	---	--	---	--

## 7. Research Activities

Identifies major research themes, places these themes in their social and economic context, highlights major research achievements (publications, collaborations, intellectual property produced, external funding received etc.), and profiles top researchers. Lays out the research agenda and identifies themes for the coming year.

- **Major/Minor research projects**

S. No.	Professor	Title of the Project	Funding Agency	Received	Allocated
1.	Sudhir Sharma	Sahariya Janjaati Par Samajik-Aarthik Prabhavon ka Adhyayan	UGC, CRO Bhopal	145,000/-	95,000/-
2.	Sandhya Bohre	Aswasthata Evam Mrityu Dar Mein Sambandh	UGC, CRO Bhopal	80,000/-	80,000/-
3.	B. K. Sharma	Negotiating Amitav Ghosh Fiction within Post-colonial premises	UGC, CRO Bhopal	50,000/-	35,000/-
4.	Mamta Dubey	Gwalior Shehar Ki Gandi Bastiyon Kia Samajik-Aarthik Adhyayan	UGC, CRO Bhopal	120,000/-	80,000/-
5.	Pushpalata Singh	Manavtavaad Ke Samsamayaik Saarokaron ke Sandarbh mein Tulsi Sahitya	UGC, CRO Bhopal	30,000/-	
6.	Mamta	Nagarjun ke	UGC, CRO	30,000/-	

	Goyal	Kaavya mein Loktantrik Chetna	Bhopal		
7.	R. K. Singh	Tulsi Sahitya mein Chitrit Janjatiyaan	UGC, CRO Bhopal	35,000/-	
8.	Satish Joshi	Stri Vimarsh Mein Mahila Sashaktikaran aur Vartmaan ..	UGC, CRO Bhopal	30,000/-	
9.	Suman Sikarwar	Ramcharitmanas Mein Prakartik Darshan	UGC, CRO Bhopal	30,000/-	
10.	Vibha Doorwar	U.P.A. Government: A Study of Coalition Politics in India	UGC, CRO Bhopal	75,000/-	
11.	Dr. Sudha Gupta	Grammin Mahila Shaktikaran Bhind Dist. Ke Vishesh Sandharb Me	UGC, CRO Bhopal	70,000/-	
12.	Geeta Shrivastav	Gwalior Nagar ke Paryavaran ka Saamajik Evam Aarthik Vikas Par Prabhaav	UGC, CRO Bhopal	1,00,000/-	
13.	V. K. Sharma	Pratiraksha Ke Prati Jagrukta	UGC, CRO Bhopal	75,000/-	
14.	Sudhir Sharma	Sahariya Janjati Ka Saamjick-Prabhaav Ka Adhyayan	UGC, CRO Bhopal	145,000/-	
<b>On Going Research Projects</b>					
1.	A. K. Singh	Gandhi Chintan Mein Maanavvaad	UGC, CRO Bhopal	150,000/-	
2.	Ayub Khan	Portrayal of the Hijra	UGC, CRO Bhopal	90,000/-	150,000/-

		Through Various Media a Sociological Studies			
3.	Mamta Dubey	Gwalior Shehar Ki Gandi Bastiyon ka Saamajik-Aarthik Adhyayan	UGC, CRO Bhopal	80,000/-	1,20,000/-

- **Research Papers Published**

#### DEPARTMENT OF HINDI

S. No	Title of the Journal/Book	ISSN No.	National/ International	Name of The Paper
<b>Dr. Pushpalata Singh</b>				
1.	New Man International Journal	2348-1390	International	एक साहित्यिक राजनेता माननीय अटल बिहारी वाजपेयी
2	सहृदय नवउन्नयन विशेषांक	2230-8997	National	साहित्य समाज और सिनेमा का अतः संबंध
3	New Man International Journal	2348-1390	International	पत्रिकारिता और साहित्य में अंतर्सम्बंध
<b>Dr. Mamta Goyal</b>				
4	सहृदय पत्रिका	2230-8997	National	समाज और सिनेमा का अंतर्संबंध
<b>Dr. R. K. Singh</b>				
5.	शोधयात्रा	2231-0428	National	सूरदार दास के काव्य में पर्यावरण चेतना
6.	सहृदय पत्रिका	2230-8997	National	परदे पर बढ़ती न्यूनावरणता एवं बाजार
7	हिन्दी भाषा और साहित्य	978-93-5265-52-6-7	National	महिला साहित्यकारों की सामाजिक प्रतिबद्धताएं एवं अवदान
8	शोधयात्रा	2231-0428	National	हिन्दी बाल साहित्य की वर्तमान दिशा
9.	शोधयन	22497536	National	शिक्षा में स्वायत्तता और उसकी जबावदेही
<b>Dr. Shashi Prabha Puranik</b>				

10	लोक मंगल	2250-0448	National	नवगीत उद्भव और विकास
11.	शोधायन	2249-7536	National	प्रगतिशील पंत और मार्क्सवाद
12	शोधयात्रा	2231-0428	National	हिन्दी साहित्य में एकता के स्वर
<b>Dr. Satish Joshi</b>				
13.	शोधयात्रा	2231-0428	National	दलित कथा साहित्य में प्रगतिशील चेतना की अभिव्यक्ति
<b>Dr. Shradha Saxena</b>				
14	लोकमंगल	2250-0448	National	21वीं सदी की चुनौतियां एवं माया वर्मा के नवगीत
15	सहृदय	2230-8997	National	सिनेमा का दायित्व
16	इंगित	24546305	Regional	मूल्य परम्परा और माया वर्मा का बल साहित्य
<b>Dr. Suman Sikarwar</b>				
17	शोधयात्रा	2231-0428	National	दिनकर काव्य में राष्ट्रीय चेतना

**DEPARTMENT OF LIBRARY AND INFORMATION SCIENCE**

S. No	Title of the Journal/Book	ISSN No.	National/ International	Name of The Paper
<b>Dr. Neerja Verma</b>				
18	Granthalaya Vigyan Vol. 47, 2016	0975-564X	National	Internet ki Duniya mein Web Browser ke Utkrisht Upyog (P.55-59)
19.	Granthalaya Vigyan Vol. 47, 2016	0975-564X	National	Badalate Parivesh mein Granthalaya Vipadan ki Aawashyakta (P. 162-168)
20	Intellectual Property Rights in Media & Entertainment: Issues and Challenges by	978-93-84312-04-6	National	Copyright Issues and Institutional Repositories in India ( P. 129-145)

21.	Recent Advances in Library and Information Science in Digital Era by Shriastava, Jitendra, Ed. Jaipur, Prateeksha Publications, 2017	978-93-83662-42-5	National	The World's Biggest Tech Giants Google: Its amazingly known and unknown 100+Services (P. 86-99)
<b>Dr. Sarita Verma</b>				
22.	Contrivance of Academic libraries in Digital Era	978-81-930894-0-8	National	Implementation of QR Codes in Libraries : An Introduction Pg.No. 261
23	Contrivance of Academic libraries in Digital Era	978-81-930894-0-8	National	Uses of Libraries and Information services in institute of Management and Colleges at Delhi Pg.No. 305
24	Granthalaya Vigyan , Vol. 46 , 2015	0973-56X	National	National Archives of India: An Introduction, Pg. No. 135 to 141
25	Granthalaya Vigyan , Vol. 46, 2015	0973-56X	National	Usability of Electronic -learning and Mobile- learning in Library and Information Science Pg. 37 to 47
26	Utility and Importance of Library and information services in Education and Management	978-81-931100-3-4	National	Blog : An Ultimate Tool of Getting Information , Pg. No. 10 to 16
27	Granthalaya Vigyan , Vol. 47 , 2016	0975564X	National	Recent Trends in User Studies : A Study , Pg. 151 to 161
28	Granthalaya Vigyan , Vol. 47 , 2016	0975564X	National	Uses of QR Codes in Libraries : An emerging concepts, Pg. No 142 to 150

29.	Recent Advances in Libraries and Information science in Digital Era : Professor A.K. Verma Festschrift	978-93-83662-42-5	National	Institutional Repository : A Newly developed concept for Institutions in India , Pg.No. 165 to 188
179.	Recent Advances in Libraries and Information science in Digital Era : Professor A.K. Verma Festschrift	978-93-83662-42-5	National	An Analysis of the Citation pattern of Doctoral dissertation in the field of Chemistry in C.S.J.M. University, Kanpur U.P. Pg.No. 3 to 15

#### DEPARTMENT OF ENGLISH

S. No	Title of the Journal/Book	ISSN No.	National/ International	Name of The Paper
<b>Dr. S.K. Yadav</b>				
30.	The Criterion	0976-8165	International	Evaluation of characters in the Materialistic World: Arthur Miller's 'Death of a Salesman'
<b>Dr. Sadhana Agrawal</b>				
31	New Man International Journal of Multidisciplinary Studies	2348-1390	International	Feminism in Literary Tradition. May,2016. Vol.3.
32.	A Journal of Asia for Democracy and Development	0973-3833	International	Feminine Psyche in <i>Clear Light of the Day</i> .



23	'Dalit Men's Autobiographies: A Critical Appraisal' Edited by Bijender Singh ( New Delhi: Kalpaz Publications, 2017)	978-93-5128-240-2	National	Exploitation of Leather-Workers in Balbir Madhopuri's 'Changiya Rukh: Againstthe Night' Pp. 95-102
24	Perspectives in Humanities Commerce and Science. Edited by Sadhna Agrawal		National	Mainstreaming the Marginalized
<b>Dr. Archana Agrawal</b>				
25	Mainstreaming the Marginalized	978-93-83871-09-4	National	Pleasures and Sarrows of Marginalized Woman in Shashi Despande's Novel <i>The Binding Vine</i>
26.	Information Technology and Woman Empowerment	981-8120-710-5	National	The Quest for Female Identity in Shashi Despandi's Novel <i>A matter of Time</i>
27	A Journal of Asia for Democracy and Development	0973-3833	National	The Issue of Gender Discours in Mahesh Dattani's <i>Tara</i>
<b>Dr. B.K. Sharma</b>				
28	Research Scholar: An International Referred e-Journal of liberary Explorations	2320-6101	National	Delineation of Woman Suffering in Alice Munro's <i>Runaway</i>

**DEPARTMENT OF SANSKRIT**

<b>S. No</b>	<b>Title of the Journal/Book</b>	<b>ISSN No.</b>	<b>National/ International</b>	<b>Name of The Paper</b>
<b>Dr. Savita Rastogi</b>				
29	क्रियटिव डिस्कॉर्स	2348-9979	National	संस्कृत वांग्मय में शैक्षणिक मूल्यों की अवधारणा
30	शोधायन	2249-7536	National	प्राचीन भारतीय शिक्षा पद्धति में शैक्षणिक मूल्य
31	सुरभारती	0775-5683	National	वेदों में समाज सुधार की अवधारणा
32	सुरभारती	0775-5683	National	भवभूति के रूपकों में नारी मनोविज्ञान
<b>Dr. Manish Khemaria</b>				
33	शोधायन	2249-7536	National	प्राचीन काल में नारियों की राज नैतिक स्थिति
34	शोधायन	2249-7536	National	वैदिक साहित्य का काव्यात्मक स्वरूप
35	इतिहास संशोधन	2277-5609	National	भारत में सौर संप्रदाय का विकास
36.	इतिहास संशोधन	2277-5609	National	कालिदास के महाकाव्यों में ज्योतिष परक चिंतन
37	शोधायन	2249-7536	National	वैदिक यज्ञ एक शोध परक चिंतन
38.	मध्यमा	2229-7081	National	संस्कृत पाठाशालाजु प्रचलितस्य पाठ्यक्रमस्य समीक्षा
39.	शोधायन	2249-7536	National	मेघदूत में सामाजिक संस्कार
40.	सुरभारती	0775-5683	National	ग्वलियर चम्बल अंचल का संस्कृत साहित्य
41	रिसर्च जर्नल (के. आर.जी.)	2348-9974	National	वेदों में पारिवारिक सामंजस्य का महत्व
42	सुरभारती	0775-5683	National	रघुवंश महाकाव्य पर गीता का प्रभाव
43	शोधायन	2249-7536	National	वृहत्तर भारत में रामकथा
44.	शोधायन	2249-7536	National	ज्योतिष एवं रोग निवारण
45	गीता पीयूष	2348-2479	National	गीता का दर्शनिक चिंतन
46	संगमणी		National	मुक्तक काव्य संग्रह

<b>Narottam Nirmal</b>				
47	सुरभारती	0775-5683	National	अभियान में लोक जीवन
48	सुरभारती	0775-5683	National	मालवविकाग्निमित्रम् नाटक में लोक जीवन
49	शोधायन	2249-7536	National	शिक्षा में संस्कारों की महत्ता
50.	शोधायन	2249-7536	National	मेघदूत एवं पर्यावरणीय सौन्दर्य
51	New Man Journal	2348-1390	National	वैदिक वाग्मय में नारी का स्वरूप

**DEPARTMENT OF LIBRARY AND INFORMATION SCIENCE**

<b>S. No</b>	<b>Title of the Journal/Book</b>	<b>ISSN No.</b>	<b>National/ International</b>	<b>Name of The Paper</b>
<b>Dr. Jitendra Shrivastava</b>				
52.	Recent Advances in Library and Information Science in Digital Era, Edited by Dr Jitendra Shrivastava, Prateeksha Publications Jaipur	978-93-83662-42-5	National	Open Access Initiatives in India: Challenges, Issues and Implications
53.	Recent Advances in Library and Information Science in Digital Era, Edited by Dr Jitendra Shrivastava, Prateeksha Publications Jaipur	978-93-83662-42-5	National	Marketimong Library & Information Services by Application of Q R Codes
54	Prateeksha Publications Jaipur	978-93-83662-42-5	National	Recent Advances in Library and Information Science in Digital Era (Edited Book)

<b>Dr. Arvind Sharma</b>				
55	A K Varma Festschrift	978-93- 83662- 42-5	National	Tacit Knowledge Management in Libraries. In Recent Advantages in Library and Information Science in Digital Era :
56.	इतिहास – संशोधन (A Peer Reviewed Journal)फरवरी 2016.वोल. 5 , अंक 9.	2277- 5609	National	साहित्यिक चोरी
57.	ग्रंथालय विज्ञान, खण्ड 47.2016.	0975- 564x	National	अंतर्वस्तु विश्लेषण : एक विहंगावलोकन
58	एक विवेचन : शोधायन मई 2015	2249- 7536	National	शिक्षा में स्वायत्तता :
59	ग्रंथालय विज्ञान, खण्ड 45, 2014	0973- 564X	National	शोध साहित्य समीक्षा : एक विश्लेषणात्मक अध्ययन

**List of linkages/ Collaborations/ MOUs**

NIL
-----

- **College Publications: Research Journal, Magazine, Newsletter**

<b>Veerangana.College Magazine</b>
------------------------------------

## 8. Human Resources

Highlights senior faculty and administrative appointments. Describes what new areas of activity (new courses, research areas, extracurricular activities etc.) and administrative improvements are enabled by these appointments.

### 1. Faculty and Administrative appointments: Teaching and Non-teaching

Positions	Teaching Faculty				Non Teaching Faculty	Technical Staff
	Prof	Promoted Prof	Assistant Prof	Guest Faculty		
Sanctioned by UGC/ University/ State Govt						
<i>Filled</i>						
Sanctioned by Management/ Janbhagidari Samiti/ Other authority						
<i>Filled</i>	05	26	34	22	24	04

### 2. Guest Faculty: subject-wise appointments

S.no.	Name of the Guest Faculty	Qualification	Subject
1	Dr Lalita Mishra	Ph.D + NET	COMMERCE
2	Dr Pradeep Sharma	Ph.D + NET	GEOGRAPHY
3	Dr Pooja Chauhan	Ph.D	GEOGRAPHY
4	Dr Devendra Kumar Bhaskar	Ph.D + NET	HISTORY
5	Dr Dhanvani Singh	Ph.D + NET	HISTORY
6	Dr Brajendra Singh	M.Phil +NET	HISTORY
7	Dr. Neeraj Bhardwaj	Ph.D + NET	MIL. SC
8	Dr Neeta Shrivastava	Ph.D	MIL. SC
9	Dr Ashesh Jha	Ph.D	PHILOSOPHY
10	Dr Subhash Chandra Shakya	Ph.D	PHILOSOPHY
11	Dr Prateek Singh	Ph.D + NET	PYSCHOLOGY
12	Dr Deepti Mishra	Ph.D + NET	PYSCHOLOGY
13	Dr Sudha Sharma	Ph.D	PYSCHOLOGY
14	Shri Rakesh Jatav	MPED.	SPORTS OFF.
15	Megha Singh	M.Lib +NET	LIBRARIAN
16	Dr Vindod Sharma	Ph.D	SOCIOLOGY
17	Dr Anuradha Singh	LLM +NET	LAW
18	Dr Ranjana Kushwah	Ph.D	LAW
19	Mr Devendra Dwarg	LLM +NET	LAW
20	Ms Jyoti Diwakar	LLM +NET	LAW
21	Mr Krishan Pal Singh	LLM +NET	LAW
22	Mr Anoop Kailasia	LLM +NET	LAW

## 9. Events and Initiatives

Describes major events including seminars, conferences, competitions, student study trips etc. Focuses on what was achieved and learned, and how the college will follow up.

Describes significant academic, administrative, student support, fundraising, and other initiatives over the past year. The description of each initiative will be structured around the need for the initiative, how it was designed, what resources were used, what results were achieved, and which features of the initiative drove success.

- |   |  |
|---|--|
| 1 | WorkShop Conducted on Research Methodology                 |
| 2 | National Seminar on "Present Sceanario in Indian Economy." |

## 10. Institutional Development plan (4 pages)

Describes the college's activities over the past year under different schemes, discusses performance against strategic/institutional development plans and commitments over the previous year.

Indicator*	Baseline Value 2015	Target for [2016]	Value as on 30 <sup>th</sup> September [2016]
Employability	16	24	41
Access ( Enrol.)	934	1260	1032
Equity(Scholarship)	SC-203+ ST -06=209	SC-211+ ST -09=220	
Academic activities (Result UG)	86.00%	100 %	93.80%
Research (Ph.D Enrol.)	314	523	632

### **Role of Internal Quality Assurance Cell (IQAC) in academic audit and initiating quality assurance strategies and processes**

The IQAC ensures Academic Audit.

The IQAC has evolved mechanism to receive feedback and analysis it for the benefit of the Institution.

The IQAC examines the self-appraisal forms of the faculty at the end of the session. It ensures that the information submitted by the faculty is correct which helps the faculty and the college in sending accurate API scores.

The IQAC committee motivates the faculty members to engage in research and enter in conversation with other researchers in other institutions and universities to ensure a mutually evolving research environment

### **11 Placement Report**

Describes the college's placement cell activities, placement rate and salary statistics, and lists major employers and sectors of employment (disaggregated by gender and course studied). Profiles successful alumni and identifies emerging placement trends.

#### **Activities of Placement Cell**

<b>S.no.</b>	<b>Name of the activity</b>	<b>Name of the Resource Person/ agency</b>	<b>Date &amp; Duration</b>
1	Job Oriented Training Programme	Shri G. D. Laddha. CA	07 Days
2	Job Oriented Training Programme	Shri Dharmendra Sharma	10Days
3	Entrepreneurship	Shri Atul Gupch	03 Days

	Training		
4	Mobile Repairing Training	Shri V. S Gurjar	07 Days
5	Career Seminar	Shri Nitin Gupta	02 Days
6	Computer Training Course	Miss Arti Imalia	10 Days

#### Placement Details

S.no.	No. of Students Selected	List of employers/companies	Salary Package
	45	Air Force,army,ITBP,MP Police Army Medical Core ,CISF,Navy,Indian Railways.State Juidiciary Services	
		Army	
		MP Police	
		Army Medical Core	
		CISF	
		Navy,Railway	

#### Alumni Profile

S.no.	Name of Alumni	Employment status	Name of the organisation
1	Hon'ble Bharat Ratna Atal Bihari Bajpai	Ex Prime Minister	
2	Dr Bhagirath Prasad	Member of Parliament	Lok Sabha
3	Justice Arun Mishra	Judge	Supreme Court
4	Justice Jitendra Maheshwarl	Judge	MP High Court
5	Prof. Puroshottam Agrawal	Professor	J.N.U , New Delhi
6	Ms Madhulika Singh	Dy. Commissioner	Sales Tax Dept. Govt of MP
7	Shri Suresh Tomar	Joint Commissioner	Child and Women Welfare
8	Dr Prateek Singh	Asstt. Prof.	Magdh University, Gaya(Bihar)
9	Ms Anuradha	IAS	Govt of India
10	Ms Shalini	PO	PNB



## 12 Innovations and Best Practices

### **Innovations**

The College has created its own 'College Anthem' to propagate the history, philosophy and prestige of the institute. It is sung during functions and programs conducted by the college. The anthem is available on YouTube

### **Best Practices**

A number of best practices are practiced by the Institution for the holistic development of the students.

The college has adopted a student-centric philosophy in which the entire machinery is geared towards the solution to the needs and problems of the students.

Community Orientation Activities are sincerely pursued by the Institution through its NSS and NCC wings. The NSS unit selects rural areas as their venues and community development as the theme.

The college conducts remedial classes for slow learners and extra-classes for advance learners.

All national festivals and national days are celebrated by the entire faculty and staff with the students.

For physical fitness and overall well-being of the students, the sports department organizes physical fitness activities and sports events.

Legal Aid Clinic provides free legal counselling

## **12 SWOC Analysis (strength , weaknesses, Opportunity and Challenges**

### **Strengths**

The students of the College are its greatest strength. They excel in academic as well as extra-curricular activities.

Our College is one of the greatest learning centers in northern Madhya Pradesh. It is also one of the oldest institutes of its kind in northern India, older than such great universities of the country like JNU, DU, BHU and AMU.

The College has great infrastructure, sprawling over 22 acres. Its main building is a feat of architecture. Its infrastructure is so huge that it is used by the Election Commission in every election. It has been the Control Center for Parliamentary and Assembly elections for decades. The college building is also hired by the Film Industry for the purposes of shooting movies

### **Weaknesses**

In our self-finance courses, there is no permanent faculty.

The college has to conduct exams and classes simultaneously which disturbs its routine.

### **Opportunities**

As more and more people in the country are getting educated and are getting involved in social processes, the college has an opportunity to become a beacon of social awareness which will help the coming generations in the building of thought process and in the development of understanding of social, political and national issues

No country can establish its separate identity without the knowledge of its indigenous people, culture and traditions. The college already functions as a centre of research in which classical as well as tribal cultures are studied. The college wants to study and bring out the relevance of these traditional cultures in a global and fast-changing international and national scene

## Challenges

In the age in which everyone is running towards technical and vocational training courses, it is necessary to establish the need and importance of the various disciplines of language and humanities. The college sees it as a challenge and aims to tackle it.

Though the College has excellent ICT facilities, it aims to increase them even more, according to the growing demand of the time.

As students are the real wealth of the college, the institution also wants to keep creating employable youth.

## 14 Looking Ahead Future Plans

### Key Initiatives Planned/ implemented

S. No	Head (administrative/ academic, etc)	Nature of proposal	Expected Outcome
1	Increase students enrolment	Infra Structural Development	10% increase in student enrolment
2	Utilization of IT	Audio visual class room and up gradation of computer labs etc	Enhancement in I T Facilities
3	Start new courses	1 Certificate course in Communicative English	To make students employable
4	Knowledge Capital	Seminar, Workshops, Conference, MOU etc	Creation of Knowledge
5	Community Development	Energy ,Water Conservation , sensatization and awareness programme	Community Responsibility.

## 14 Appendix: Institutional Performance Data and Financial Reports

Provides key data on the institution and its performance, including achievement against strategic plan targets and financial reports. This section is mandatory. All data fields must be completed, in the format and as per the instructions attached.

## Part II

Appendix: Institutional Performance Data and Financial Reports (all part II data kindly fill in attached excel sheet )

### 1. Sanctioned seats and enrolment

<b>(a) Sanctioned Seats(First Year)</b>					
	<b>SC</b>	<b>ST</b>	<b>Other Reserved Categories</b>	<b>General</b>	<b>Total</b>
<b>Undergraduate</b>	As per reservation policy				1310
<b>Postgraduate</b>	As per reservation policy				525
<b>PhD</b>	Depends on the availability of seats under approved supervisors				

Data Source: AISHE

<b>(b) Enrolment</b>							
		<b>Undergraduate</b>			<b>Postgraduate</b>		<b>PhD</b>
		<b>Year 1 (16-17)</b>	<b>Year 2 (16-17)</b>	<b>Year 3 (16-17)</b>	<b>Year 1 (16-17)</b>	<b>Year 2 (16-17)</b>	
<b>SC</b>	Male	116	110	85	44	37	-
	Female	30	43	13	17	09	-
<b>ST</b>	Male	26	04	10	01	01	-
	Female	05	02	00	00	00	-
<b>Other Reserved Categories</b>	Male	270	249	138	29	17	-
	Female	39	40	18	08	06	-
<b>General</b>	Male	371	366	244	45	20	-
	Female	77	68	46	27	30	-
<b>Total</b>	Male	783	729	477	119	75	-
	Female	151	153	77	52	45	632

Data Source: AISHE

<b>Number of sanctioned seats by discipline group and enrolment in the 1<sup>st</sup> year as on September 30<sup>th</sup> [2016-17]</b>				
<b>Discipline Group</b>	<b>Undergraduate</b>		<b>Postgraduate</b>	
	<b>Sanctioned Seats</b>	<b>Enrolment</b>	<b>Sanctioned Seats</b>	<b>Enrolment</b>
Arts	400	353	525	133
Commerce	560	448	70	26
Criminology and Forensic Science	-	-	-	-
Cultural Studies	-	-	-	-
Defence Studies	-	-	-	-
Design	-	-	-	-
Disability Studies	-	-	-	-
Education	-	-	-	-
Fashion Technology	-	-	-	-
Fine Arts	-	-	-	-
Fisheries Science	-	-	-	-
Foreign Languages	-	-	-	-
Gandhian Studies	-	-	-	-
Home Science	-	-	-	-
Indian Languages	-	-	-	-
IT & Computer	-	-	-	-
Journalism and Mass Communication	-	-	-	-
Law	320	231	30	30
Library and Information Science	30	10	40	09
Linguistics	-	-	-	-
Management	-	-	-	-
Marine Science and Oceanography	-	-	-	-
Oriental Learning	-	-	-	-
Physical Education	-	-	-	-
Religious Studies	-	-	-	-
Science	-	-	-	-
Social Science	-	-	-	-
Social Work	-	-	-	-
Women Studies	-	-	-	-

Data Source: AISHE

Transition and on-time graduation

<b>(a) Transition from the 1<sup>st</sup> year to the 2<sup>nd</sup> year (Undergraduate)</b>				
		<b>Number of students admitted to the 1<sup>st</sup> year in [the previous academic year] (2015*)</b>	<b>Of (*), the number of students currently enrolled in the 2<sup>nd</sup> year who:</b>	
			<b>Passed all subjects in the 1<sup>st</sup> year</b>	<b>Were Allowed to Keep Terms</b>
<b>SC</b>	Male	116	79	25
	Female	30	28	02
<b>ST</b>	Male	26	24	01
	Female	05	05	00
<b>Other Reserved Categories</b>	Male	270	239	27
	Female	39	34	02
<b>General</b>	Male	371	337	34
	Female	77	69	08
<b>Total</b>	Male	783	679	87
	Female	151	136	12

Data Source: AISHE, examination results declared by [affiliating university/autonomous college]

<b>(a) Transition from the 1<sup>st</sup> year to the 2<sup>nd</sup> year (Postgraduate)</b>				
		Number of students admitted to the 1 <sup>st</sup> year in [the previous academic year] (2015*)	Of (*), the number of students currently enrolled in the 2 <sup>nd</sup> year who:	
			Passed all subjects in the 1 <sup>st</sup> year	Were Allowed to Keep Terms
SC	Male	37	33	04
	Female	09	07	01
ST	Male	01	01	00
	Female	00	00	00
Other Reserved Categories	Male	17	15	01
	Female	06	05	01
General	Male	20	19	01
	Female	30	27	02
Total	Male	75	68	06
	Female	45	39	04

Data Source: AISHE, examination results declared by [affiliating university/autonomous college]

<b>(b) On-time graduation (Undergraduate)</b>			
		Number of students admitted to the 1 <sup>st</sup> year in [year t-3] (*) 2014-15	Of (*), the number of students who passed all final year examinations for the previous academic year 2016-17
SC	Male	123	Category wise data not maintained
	Female	29	
ST	Male	24	
	Female	05	
Other Reserved Categories	Male	267	
	Female	39	
General	Male	371	
	Female	69	
Total	Male	785	
	Female	142	

Data Source: AISHE, examination results declared by [affiliating university/autonomous college]

<b>(b) On-time graduation (Postgraduate)</b>			
		<b>Number of students admitted to the 1<sup>st</sup> year in [year t-2] (*)</b>	<b>Of (*), the number of students who passed all final year examinations in the current year</b>
<b>SC</b>	Male	44	40
	Female	17	15
<b>ST</b>	Male	01	01
	Female	00	00
<b>Other Reserved Categories</b>	Male	29	26
	Female	08	07
<b>General</b>	Male	45	44
	Female	27	26
<b>Total</b>	Male	119	111
	Female	52	48

Data Source: AISHE, examination results declared by [affiliating university/autonomous college]

2. Faculty and administrative staff in position and training

<b>(a) Faculty and administrative staff in position as on 30<sup>th</sup> September, [2016]</b>							
		<b>Reserved</b>					<b>Unreserved</b>
		<b>SC</b>	<b>ST</b>	<b>MP Residents</b>	<b>Females</b>	<b>Others</b>	
<b>Assistant Professor</b>	Sanctioned	-	-	-	-	-	70
	Filled (Regular)						34
	Filled (Contract)	-	-	-	-	-	-
	Guest Lecturers						22
<b>Associate Professor</b>	Sanctioned	-	-	-	-	-	-
	Filled (Regular)						-



	Filled (Contract)	-	-	-	-	-	-
	Guest Lecturers	-	-	-	-	-	-
<b>Professor</b>	Sanctioned	-	-	-	-	-	15
	Filled (Regular)						31(05+26)
	Filled (Contract)	-	-	-	-	-	-
	Guest Lecturers	-	-	-	-	-	-
<b>Admin. Staff (all)</b>	Sanctioned						24
	Filled (Regular)						24
	Filled (Contract)						
<b>Accountant</b>	Sanctioned						01
	Filled (Regular)						00
	Filled (Contract)						

Data Source: AISHE

<b>(b) Training of faculty and administrative staff between October 1<sup>st</sup> [previous year] to September 30<sup>th</sup> [current year]</b>				
		<b>Leadership and management training</b>	<b>Training in the area of academic specialisation</b>	<b>Other training</b>
<b>Assistant Professor</b>	Number trained	NIL		
	Avg. number of days	NIL		
<b>Associate Professor</b>	Number trained	NIL		
	Avg. number of days	NIL		
<b>Professor</b>	Number trained	NIL		
	Avg. number of days	NIL		
<b>Administrative Staff (all)</b>	Number trained	NIL	N/A	
	Avg. number of days	NIL	N/A	
<b>Accountant</b>	Number trained	NIL	N/A	
	Avg. number of days	NIL	N/A	

Data Source: Compiled from training certificates submitted by faculty/administrative staff

<b>(c) Faculty qualifications as on 30<sup>th</sup> September, [Current Year]</b>					
		<b>PhD</b>	<b>Postgraduate</b>	<b>Undergraduate</b>	<b>Others</b>
<b>Assistant Professor</b>	Regular	31	03	-	-
	Contract	-	-	-	-
	Guest Lecturers	15	07		
<b>Associate Professor</b>	Regular				
	Contract				
	Guest Lecturers				
<b>Professor</b>	Regular	31	-	-	-
	Contract	-	-	-	-
	Guest Lecturers	-	-	-	-

Data Source: AISHE

3. Student support services

<b>(a) Financial support received (from all sources) by students in the college between October 1<sup>st</sup> [previous year] to September 30<sup>th</sup> [current year]</b>							
		<b>Undergraduate</b>		<b>Postgraduate</b>		<b>PhD</b>	
		<b>Number</b>	<b>Average Value (Rs.)</b>	<b>Number</b>	<b>Average Value (Rs.)</b>	<b>Number</b>	<b>Average Value (Rs.)</b>
<b>SC</b>	Male	320	7580/	101	7580/		
	Female						
<b>ST</b>	Male	18	7580/	03	7580/		
	Female						
<b>General</b>	Male						
	Female						
<b>Total</b>	Male						
	Female					44	25000/

Data Source: AISHE

<b>(a) Financial support received, from the DHE, by students in the college between October 1<sup>st</sup> [previous year] to September 30<sup>th</sup> [current year]</b>							
		<b>Undergraduate</b>		<b>Postgraduate</b>		<b>PhD</b>	
		<b>Number</b>	<b>Average Value (Rs.)</b>	<b>Number</b>	<b>Average Value (Rs.)</b>	<b>Number</b>	<b>Average Value (Rs.)</b>
<b>SC</b>	Male	-	-	-	-	05	1,92000
	Female	-	-	-	-	-	-
<b>ST</b>	Male	-	-	-	-	-	-
	Female	-	-	-	-	-	-



	Division										
	3 <sup>rd</sup> Division										
<b>3<sup>rd</sup> year</b>	Appeared									558	121
	1 <sup>st</sup> division									211	55
	2 <sup>nd</sup> Division									310	61
	3 <sup>rd</sup> Division										

Data Source: AISHE, Examination results declared by [affiliating university/autonomous college]

<b>(a) Examination results for [previous academic year] (postgraduate)</b>											
		SC		ST		Other Reserved Categories		General		Total	
		M	F	M	F	M	F	M	F	M	F
<b>1<sup>st</sup> year</b>	Appeared										
	1 <sup>st</sup> division										
	2 <sup>nd</sup> Division										
	3 <sup>rd</sup> Division										
<b>2<sup>nd</sup> year</b>	Appeared									71	48
	1 <sup>st</sup> division									41	31
	2 <sup>nd</sup> Division									22	12
	3 <sup>rd</sup> Division										

Data Source: AISHE, Examination results declared by [affiliating university/autonomous college]

#### 5. Placement and student tracking

<b>(a) Placement and Tracking of Students who graduated in [previous academic year] (Undergraduate)</b>						
		Number of students who graduated in [the previous academic year] (*)	Of (*), the number of students who were successfully tracked and are:			
			Employed/ Self-employed	In education/ training	Unemployed	Not in the labour force
<b>SC</b>	Male	-	-	-	-	-
	Female	-	-	-	-	-

<b>ST</b>	Male	-	-	-	-	-
	Female	-	-	-	-	-
<b>General</b>	Male	-	-	-	-	-
	Female	-	-	-	-	-
<b>Total</b>	Male	-	-	-	-	-
	Female	-	-	-	-	-

Data Source: Records of the college placement cell

<b>(b) Placement and Tracking of Students who graduated in [previous academic year] (Postgraduate)</b>						
		<b>Number of students who graduated in [the previous academic year] (*)</b>	<b>Of (*), the number of students who were successfully tracked and are:</b>			
			<b>Employed/ Self-employed</b>	<b>In education/ training</b>	<b>Unemployed</b>	<b>Not in the labour force</b>
<b>SC</b>	Male	-	-	-	-	-
	Female	-	-	-	-	-
<b>ST</b>	Male	-	-	-	-	-
	Female	-	-	-	-	-
<b>General</b>	Male	-	-	-	-	-
	Female	-	-	-	-	-
<b>Total</b>	Male	-	-	-	-	-
	Female	-	-	-	-	-

Data Source: Records of the college placement cell

## 6. PhDs Awarded

<b>Number of PhDs awarded between October 1<sup>st</sup> [previous year] to September 30<sup>th</sup> [current year]</b>	
<b>Discipline Group</b>	<b>Number</b>
Arts	23
Commerce	10
Criminology and Forensic Science	
Cultural Studies	
Defence Studies	
Design	
Disability Studies	
Education	
Fashion Technology	
Fine Arts	

Fisheries Science	
Foreign Languages	
Gandhian Studies	
Home Science	
Indian Languages	
IT & Computer	
Journalism and Mass Communication	
Law	03
Library and Information Science	06
Linguistics	
Management	03
Marine Science and Oceanography	
Oriental Learning	
Physical Education	
Religious Studies	
Science	
Social Science	
Social Work	
Women Studies	
Literature	
Other	
<b>All disciplines</b>	

Data Source: AISHE

#### 7. Research and consultancy

<b>Revenue generated through externally funded research and consultancies over [previous financial year]</b>		
<b>Discipline Group</b>	<b>Number of active projects</b>	<b>Total Revenue Generated (Rs. lakhs)</b>
Arts	NA	
Commerce	NA	
Criminology and Forensic Science	NA	
Cultural Studies	NA	
Defence Studies	NA	
Design	NA	
Disability Studies		
Education		
Fashion Technology		
Fine Arts		
Fisheries Science		
Foreign Languages		
Gandhian Studies		
Home Science		

Indian Languages		
IT & Computer		
Journalism and Mass Communication		
Law		
Library and Information Science		
Linguistics		
Management		
Marine Science and Oceanography		
Oriental Learning		
Others / Inter-disciplinary		
Physical Education		
Religious Studies		
Science		
Social Science		
Social Work		
Veterinary and Animal Sciences		
Women Studies		
<b>All disciplines</b>		

Data Source: College/university records

<b>Number of papers published in peer-reviewed journals between October 1<sup>st</sup> [previous year] to September 30<sup>th</sup> [current year]</b>			
<b>Discipline Group</b>	<b>Number of papers published</b>		<b>Number of published papers through cross-institute research collaboration</b>
	<b>International Journals</b>	<b>National Journals</b>	
Arts	-	-	-
Commerce	-	-	-
Criminology and Forensic Science	-	-	-
Cultural Studies	-	-	-
Defence Studies	-	-	-
Design	-	-	-
Disability Studies	-	-	-
Education	-	-	-
Fashion Technology	-	-	-
Fine Arts	-	-	-
Fisheries Science	-	-	-
Foreign Languages	-	-	-
Gandhian Studies	-	-	-
Home Science	-	-	-
Indian Languages	-	-	-
IT & Computer	-	-	-
Journalism and Mass Communication	-	-	-
Law	-	-	-

Library and Information Science	-	-	-
Linguistics	-	-	-
Management	-	-	-
Marine Science and Oceanography	-	-	-
Oriental Learning	-	-	-
Others / Inter-disciplinary	-	-	-
Physical Education	-	-	-
Religious Studies	-	-	-
Science	-	-	-
Social Science	-	-	-
Social Work	-	-	-
Women Studies	-	-	-
<b>All disciplines</b>		78	-

Date Source: College records based on published papers submitted by faculty

#### 8. NAAC accreditation and UGC autonomy

	<b>Date of Application (LOI &amp; SSR submitted)</b>	<b>Date on which accreditation was received</b>	<b>Grade</b>	<b>Valid till</b>
<b>1<sup>st</sup> Cycle</b>	16/02/2004		B++	
<b>2<sup>nd</sup> Cycle</b>	20/07/2013	10/12/2014	A	13/12/2019
<b>3<sup>rd</sup> Cycle</b>	-	-	-	-

Date of submission of the Annual Quality Assurance Report for the current year: \_\_\_NA\_\_\_.

Does the college have currently valid UGC autonomy? \_\_\_\_\_NO\_\_\_\_\_. If yes, by order number \_\_\_\_\_, dated \_\_\_\_\_.

#### 9. Institutional Trends

<b>Variable</b>	<b>Baseline Value</b>	<b>[Year 1]</b>	<b>[Year 2]</b>	<b>[Year 3]</b>	<b>[Year 4]</b>	<b>Current Year</b>
Percentage of sanctioned seats in the 1 <sup>st</sup> year filled (undergraduate, all categories)	-	-	-	-	-	-
Percentage of sanctioned seats in the 1 <sup>st</sup> year filled (postgraduate, all categories)	-	-	-	-	-	-
Transition rate from the 1 <sup>st</sup> year to the 2 <sup>nd</sup> year (undergraduate, all categories)	-	-	-	-	-	-



On-time graduation rate (undergraduate, all categories)	-	-	-	-	-	-
Transition rate from the 1 <sup>st</sup> year to the 2 <sup>nd</sup> year (post graduate, all categories)	-	-	-	-	-	-
On-time graduation rate (postgraduate, all categories)	-	-	-	-	-	-
Regular faculty in position rate (all levels, reserved categories)	-	-	-	-	-	-
Regular faculty in position rate (all levels, unreserved categories)	-	-	-	-	-	-
Percentage of regular faculty with PhDs (all levels)	-	-	-	-	-	-
Employment rate of graduates from the previous academic year (undergraduate, all categories)	-	-	-	-	-	-
Employment rate of graduates from the previous academic year (postgraduate, all categories)	-	-	-	-	-	-
Percentage of total revenue generated through externally funded research	-	-	-	-	-	-
Number of papers published in peer-reviewed, international journals	-	-	-	-	-	-

Source: Tables under section 1-8.

#### 10. Financial Reports

Name and registration number of the auditor \_\_\_\_ Mr Sandeep Baijal , Registration no. 2434623\_\_\_\_\_.

Number of audit observations recorded by the auditor \_\_\_\_\_-\_\_\_\_\_.

Number of audit responses found satisfactory, as certified by the project directorate\_\_\_\_\_.

Certified audit reports as per the standard Chart of Accounts to be attached.

#### 11. All India Survey of Higher Education

Date on which all applicable fields of the Data Collection Format for the All India Survey of Higher Education were completed and submitted  
\_\_uploaded\_\_ YES \_\_\_\_\_

\*\*\*\*\*