

Annual Report 2017-18

This format outlines the annual reports to be published by all colleges in the Madhya Pradesh on their websites, by October 31st of each year. Part I is intended as a guide and colleges are free to alter the contents and format as they see fit. Part II, the Appendix (Institutional Performance Data and Financial Reports), is mandatory and colleges are required to report all data as per the attached format and instructions.

Important Information –

- Name of the college – Govt College Patharia
- Place of the college – Damoh Road Patharia
- District - Damoh
- Division - Sagar
- Year of establishment of college - 1989
- Name and Contact details(Mail id , Phone) of Principal –Dr. G.P. Choudhary madhavraosapray@gmail.com, 9425612036
- Name , Post and Contact details of (mail id, Phone no.) of Reporting In charge – Dr. B.L. Ahirwar, Assistant professor Hindi, 9893970438 madhavraosapray@gmail.com
- Date of report submission – 10-09-2018

Part I

- 1. The Principal's Report (2 pages)-** Highlights the key activities, events, and successes of the past year and briefly describes major new initiatives to be undertaken over the next year.

Govt College, Patharia was established in 1987 as an undergraduate college. At that time the college was affiliated to Dr. H.S. Gour University Sagar. At present It is affiliated to Maharaja Chhatrasal Bundelkhand University, Chhatarpur and recognized by UGC under 2f. It is providing education in undergraduate and postgraduate classes in arts, science disciplines .

1. The best practices that were held in the college were plantation in the campus, cleanliness awareness programs, personality development programs, celebration of ' Teachers' day and other important days.
2. As far as games and sports are concerned, the student of the college participated in different games at the college, university, state and national levels.
3. Swami Vivekanand Career Counselling Cell is also very much active to provide the information to the students regarding job opportunities and conducted a job fair also with the help of local administration and district employment centre
4. Swachhata abhiyan Programmes, Plantation, Blood Donation camp 7 days special camp organized under NSS Schemes in village botrai.
5. In College Campus Plantation was done on large scales around 450 plants were planted during last 2 years are of them are alive.
6. Multipurpose Auditorium is under construction in college campus.
7. Boundrywall construction is also proposed .
8. The New initiatives to be undertaken over the next year .
9. To Provide well equipped computer laboratory to all the students of the institute.
10. Youth festival was also organised in the college in which the students participated in different activities very actively and were selected for university and state level youth festival

2. Overview (1 page)

(i) Vision, Mission and Objectives of the college

Vision

Govt college Patharia approved by UGC and M.P. Higher education department is determined to attract, develop and retain a diverse student population and promote its success. We continually strive to innovate-finding new and more effective ways to educate and serve students. We will try our best to become nationally known Institution that makes a difference.

Mission

The College is fully committed to the highest ideals of collegiate education, by bringing innovation in learning methods adopting diversified curriculum it aims at the development of each student and focuses on a comprehensive and balanced education.

- To enhance the standard of teaching at UG and PG level with the help of innovations and best practices.
- To promote skill oriented and vocational courses.
- The College strives to inculcate ethical and moral values in the students and encourages them to become integrated and wholesome individuals capable of handling their careers and lives effectively.
- To promote academic program that are relevant to the socio-economic needs of the local region where the college is located.

(ii) Brief introduction of the college (including the status (Govt. / Lead/ Constituent/ Affiliated/ Private), Parent University, UGC recognition, CPE status, etc), location & campus area

Patharia is a tehsil of Damoh District of (M.P.). This town is situated in between Sagar and Damoh, and is connected by road and rail. Patharia and Damoh are directly connected by bus. But, Sagar is not connected directly. One has to go via Garhakota a township of Sagar district.

Govt Degree College Patharia, is named after Late Shri Madhav Rao Sapre, a renowned journalist of Madhya Pradesh. It will not be out of context to mention here that a Sangrahalaya of Journalism in Bhopal has been named after this legend (of Patharia).

This College is affiliated to Maharaja Chhatrasal Bundelkhand University Chhatarpur Established in 1989 college has Arts and Science faculties. In Arts faculty, Eight (08) and in Science Five (05) subjects are taught.

It has an establishment of Principal (01), Assistant Professors (23), Librarian (01), Sports Officer (01), and ministerial staff (21) out of which (06) posts of teachers, and post of sports officer, and (01) post in office are lying vacant at present.

With limited resources, the college is trying its best and continuously contributing towards betterment of the education and upliftment of the rural people- rural area.

(iii) History of the college with significant milestones

College Was Established in 1989 the name of famous journalist Madhav rao Sapray. Its only college covering large number of rural area its situated approx 30 KM. Distric Headquarter Damoh. College is having its own building, hostel building and twelve acer of land area. There is adequate facility of furniture, white marker boards , interactive teaching system, smart classes and E-library. With limited resources, the college is trying its best and continuously contributing towards betterment of the education and upliftment of the rural people- rural area

(iv) Faculties and major disciplines

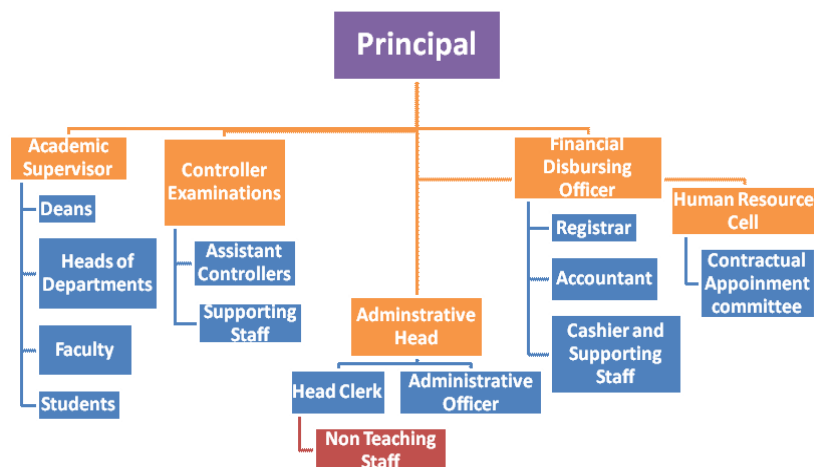
1. BA arts faculty
2. B.Sc. Science Faculty
3. M.A.- Political Science
4. M.A.- Sociology
5. M.A.- Economics
6. M.Sc.- Chemistry
7. M.Sc.- Zoology

3. Senior Management Team and Board of Governors (1 page)

Lists the members of the senior management team (Principal, Registrar, Deans etc.) and members of the Board of Governors including their designations and professional backgrounds.

Administrative Hierarchy

For example -:



List of Chairperson/members of Statutory Bodies like Board of Governors/ Executive Committee/ Academic Council/ Janbhagidari Samiti, etc

4. Admission Statistics (1 page)

- The number of applicants at the UG and PG level who ranked the college as their 1st, 2nd and 3rd preference, the number of applications received for PhD courses, and the number of students admitted at each level as per the following format.

Applications	UG	PG	PhD
Applications that ranked the college as the 1 st preference	630	180	NA
Applications that ranked the college as the 2 nd preference	289	26	
Applications that ranked the college as the 3 rd preference	100	20	
Total number of applications received	1019	226	
Number of students admitted	833	200	

Data Source: E-pravesh portal, records of the affiliating university

- A brief demographic profile of students admitted (in terms of gender, caste, whether from MP etc.)

Name of the Course	Gender		Category				% of students from the State	% of students from other states
	M	F	SC	ST	OBC	GEN		
BA	614	579	235	26	820	112	100%	0%
B.Sc.	142	285	58	4	301	64	100%	0%
MA	36	45	20	3	43	15	100%	0%
M.Sc	14	34	12	0	31	5	100%	0%

5. Academic Programmes: Core Programs - UG & PG

Core programs at UG level

Stream	Name of the Core Program	Eligibility	Optional subjects
Arts	Bachelor of Arts	10+2 from a recognized Board OR 10+2 with relevant vocational course from M.P. Board	Foundation course + a group of 3 optional subjects
			FC-Hindi-Economics-History
			FC-Economics-History-Sociology
			Fc-Political-Economics-Sociology
			Fc-Political-History-Sociology
			Fc-Political-Hindi-History
			Fc- Economics-Hindi-Political
			FC-Political-Geography-Sociology
			FC-English-Geography-Sociology
			FC-English-Hingi-Geography
			FC-Geography-History-Sociology
			FC-Hindi-Sanskrit-History
			FC-Hindi-Geography-Political
			FC-Economics-Geography-Political
FC-Hindi-Political-Sanskrit			
Science	Bachelor of Science	10+2 from a recognized Board OR 10+2 with relevant vocational course from M.P. Board	FC-Chemistry-Botany-Zoology
			FC-Chemistry-Physics-Maths

Core Options at PG level

Faculty	Name of the Core Program	Eligibility	Subject Options
<i>E.g. Arts</i>	<i>Master of Arts</i>	<i>3 year Degree course in any faculty/ Honours degree course in same subject</i>	<i>No. of subjects</i>
			<i>Economics</i>
			<i>Sociology</i>
			<i>Political Science</i>
	<i>Master of Science</i>		<i>Zoology</i>
			<i>Chemistry</i>

M.Phil/ Ph.D. Programs

S.no.	Subject	Eligibility	No. of scholars registered
1	Nil	Nil	Nil

PG Diploma/ Diploma/ Certificate/ Self-financed/ Skill based Vocational/
Short term courses

Name of the Course	Department	Duration	Fees	Seats
1	Nil	Nil	Nil	Nil

6. Academic Calendar 20 17-18

Academic Work	First/ Semester	Third/ Fifth	Second/ Fourth/ Sixth Semester
Orientation Classes/Zero Classes/SWOT analysis	1 st July To 8 July 2017		26 December 2017
Teaching and Continuous Comprehensive Evaluation	10 th July to November 2017	2 nd	27 th December 2017 To 18 th April 2018
CCE Schedule	September 3 rd Week		March 2 nd Week
Preparation Leave	2 nd November to November 2017	9 th	19 April to 21 April 2018
Practical Exams (Graduation/Post Graduation)	23 rd October to November 2017	9 th	2 nd April to 18 th April 2018
Semester and ATKT Exams	10 November to 14 December 2017		23 April to 26 May 2018
Declaration of Examination Results	31 December 2017		15 June 2018
Semester Break (for students)	15 December to 23 December 2017		28 May to 30 June 2018
Semester Break (for teachers)	15 December to 23 December 2017		28 May to 15 June 2018

7. The Student Experience (4 pages)

Briefly describes student life in the college:

- Infrastructural facilities available to students - Classrooms, Smart classrooms, laboratories and equipment, Common Research Lab, Hostel; Canteen; Garden; Students common room, Auditorium, Sports Complex & other facilities

The college ensures the learning outcome through the result. Teachers assess the result and try to incorporate improvement measures by the following ways:

1- Teachers identify slow and advanced learners through their performance in the exam, both CCE and semester end examination.

2- Students are guided to make their performance better. Valuation of answer scripts also enables the teachers to identify the problems of slow learners as far as their written skills are concerned. Such students are counselled to improve their answers in the exam. The achievements of learning outcomes are monitored regularly and discussed in the meetings of staff members with the students performance in class room, in internal evaluation and in final examination. Various measures at faculty and college level are taken to overcome barrier of learning.

1- A regular monitoring is done in the class room during lecture-based on their body language, performance about their learning based ability.

2- Learning outcome of the students is also analyzed through CCE and their performance in project work.

3- Stake-holder's feedback is taken for overcoming barriers of learning-Feedback from students is taken on course evaluation, students overall evaluation on programme and teaching and teacher evaluation.

4- Various methods & techniques are adopted for teaching & assessment like LCD projector, visual Aids, Slides, Flipchart, handout materials etc. Students are assessed through internal examination by the faculty and term and examination by the University

- Library as a learning resource- advisory committee, its composition, facilities & services (e & print), annual improvement initiatives

The college has a Library Advisory Committee. The committee has the Principal as the chairperson and the librarian as the convener, all the heads of the departments are the members of the committee. The committee considers the development proposals of the library and budget allocations and policy decisions. It also provides directions for a structured and balanced growth of the library and to provide improved facilities and innovative services. Allocation and utilization of funds and introduction of developmental programs and requirements of the users are addressed and approved by the Library Advisory Committee. The committee also ensures stock verification is carried out at the end of every academic year. The library has the following facilities/introduced the following initiatives: The College Library has been developed into a “Knowledge Centre” by making it more user friendly with easy accessibility...

Fire extinguisher is fixed in the library.

#Thought for the day is written by the students every day.

#The librarian and the library assistant are there to readily help the disabled if any, in obtaining the library materials.

#Teaching aid materials like Maps , CDs, Globe etc., are provided to the teachers.

#The Library has Ten computers with Internet and wifi facility, a scanner and a printer.

#Library provides Reference Services to both teachers and students.

Books on competitive examination are available in good numbers

A spacious well equipped reading room is available in the library.

- Student support services:
 - ✓ IT enabled services

Sno.	Computing facility	No.	Description
01	No. OF Computers	23	Corei5
02	LAN Facility	-	Swan connectivity
03	Wifi Facility	-	Available
04	No. of computer with Internet connectivity	20	

All the departments of the college are facilitated with computers and internet facility. The library of our institution works as E-learning.

All the departments of the college are facilitated with computers and internet facility. The library of our institution works as E-learning Resource Center. Wi-Fi facility is also available in library.

The computer lab is furnished with 20 computers. Administrative departments have separate computers for their official work. The Career Guidance Cell, also have separate computers.

(i) Institutional policy – Technical up gradation is done after the feedback and this plan are approved by the statutory bodies.

(ii) Computer lab provides excellent computer facilities to the faculty and the students.

(iii) Majority of departments are equipped with computers.

(iv) Faculty is uses ICT enabled teaching aids like computer and LCDs for teaching. These equipments are also used for organizing Conferences, Workshops, seminars and other academic activities.

(v) There are 10 computers connected to internet in library which are utilized to access books by the students and the faculty.

- ✓ Financial assistance (scholarships/ schemes for SC/ST/OBC/ minority, Group & Health Insurance Schemes)
- ✓ Personal enhancement & development schemes- NCC, NSS, Facilities for physically challenged & slow learners; Tutor-Guardian Scheme, Grievance Redressal Cell, Entrepreneurship Cell, Remedial classes, Career Guidance Cell.

Details of the facilities available in the institution are as following:

Technology enable learning space- Three departments of institution have smart class for effective teaching and learning process.

Laboratories- College has separate laboratories for Chemistry, Botany, Zoology, Physics ,Geography and Computer. Laboratories have been upgraded.

Botanical Garden: College has its own botanical garden with medicinal plants.

Specialized facilities & equipment for Teaching Learning: LCD projectors, Flip chart, Audio-aids in smart class rooms. Indoor sports: Table-tennis hall, sport room where other

Indoor games like Carom, Chess etc. are played by the students.

Outdoor Sports: College has own outdoor playground for Volleyball, Kabaddi, Kho-kho, Hand Ball & Athletics.

Auditorium- Under construction.

NSS- College has one unit of 100 students.

Health- Specific health check-up camp is regularly organized by NSS and Red Cross Unit each year. Specific women centric health problems, their causative factor, prevention methods are also discussed through eminent Doctors of the District.

Higiene- Special lectures on health & hygiene, personal hygiene, and importance of hygiene for girls are also organized to give awareness about hygiene for the students regularly. Specific needs on nutrition during adolescence are also taken into account.

College has a career guidance cell, which organizes various skill development programmes for the students.

- ✓ Extracurricular activities: Calendar of activities (Sports, Youth Festival, cultural and literary events), Achievements, Awards

Sports activities are carried out through out the year according to calendar of M.P. State higher education department. A number of students have represented the institute at various level of sports competition at district, divisional and state level. Youth festival programmes are also organized according to the calendar of M.P. State higher education department. Many students have taken part in various cultural activities at different levels.

✓ Major student welfare initiatives over the past year

Institution collects and analyses data on student learning outcome by organizing CCE. College uses different modes of CCE according to the interest and capability of the students so that we can judge their full potential and understand the problems which they are facing in learning. For e.g. Department organizes quiz for the knowledge of their memory and reflexes, classroom teaching to know their self-confidence, practical"s to know coordination between head-hand and heart, creativity, model making to understand their creativity. Through their project work they become aware of the real life situations. After getting the feedback from all the sources, institution"s faculty members guide them on various difficulties which they face so that they can overcome their weakness.

• Extension Activities

The College encourages the awareness of faculty and students towards their social responsibilities involving them in social activities. Following active programmers have been organized by the college during last four year: Social Responsibilities through NSS.

College have units of NSS respectively for students according to the Govt. rule. It is mandatory to every student to join either NSS or NCC at the time of admission. An activity conducted by the unit of NSS along with other faculty members includes.

Anti Drug & Anti AIDS Campaign The problem of drug is increasing among youth. Due to unawareness youth easily come into grip of the nexus of drug. A campaign was launched to make aware the youths and other citizens regarding the hazardous impact of drug over society with help of students and faculty. This was organized through rally, seminars and different competitions. Campaign is also launched to create awareness among people about dangerous disease AIDS.

Plantation Drives Plantation is the basic need to conserve our environment. College has 12 acres of land out of which much land is available for plantation purpose. The college every year organizes several plantation drives. It is remarkable that students voluntarily take care of these plants and as a result the campus becomes now full with greenery. Systematic Voters Education & Electoral participation (SVEEP)

Election commission of India has launched SVEEP programme this year to motivate the voters to cast their vote and to make them aware about the value of their vote. The college actively participated in this programme through the local authorities of election and as a result of our efforts.

1- Participation of students in extension activities is promoted through N.S.S., Red Ribbon club.

2- Recognizing the extension activities of the students, the college publicizes their achievements on notice board and felicitates them in Annual Function.

3- Frequent counseling and orientation of the students is done so as to motivate them to participate in community development work.

4- Institute organized many extension programmes such as „Beti bachao Abhiyan“, „polythene ban“, „Nasha Mukti Abhiyan“, "Self defense skill learning programme" in the college camps.

5- Institute organized these programme by interroducing dance, drama, nukkad nataks, rallies, poster presentation, speech competition, slogan making, by sharing documentary films etc. in which student take active part.

8. Student Achievements (5 pages)

Highlights the most significant academic and non-academic achievements of students over the past year. This can include major academic awards and scholarships received student research, and sports and other extracurricular activities. Focuses, in particular, on profiling top achievers and describing how resources provided by the college helped these students succeed.

ACADEMIC

- Merit

S.no	Name of the award/ medal/ meritorious scholarship	Name of the recipient	Class	Area of achievement
1	Nil	Nil	Nil	Nil

- Research scholarship/ award

S.no	Name of the scholarship award/	Name of the recipient	Class	Area of research
1	Nil	Nil	Nil	Nil

CULTURAL

- Participation

S.no	Name of the event	District Level	State Level	University	National Level
1	Debate	02	0	0	0
2	Rangoli	01	0	0	0
3	Quiz	03	0	0	0

- Awards and Achievements

Name of the student	Class	Event	Award/Achievement
Nil	Nil	Nil	Nil

SPORTS

- Participation

S.no	Name of the event	Division Level	State Level	University/ National Level	International Level
1	Vollyvall (Male)	07	05	05	0
2	Vollyvall (Female)	08	05	0	0
3	Kho-Kho (Male)	0	01	0	0
4	Kho-Kho (Female)	03	0	0	0
5	Kabaddi (Male)	02	0	0	0
6	Kabaddi (Female)	03	01	0	0
7	Table Tennis (Male)	3	0	0	0
8	Table Tennis (Female)	3	0	0	0
9	Cricket (Male)	01	01	0	0
10	Athletics (Male)	6	0	0	0
11	Athletics (Female)	2	0	0	0

- Awards and Achievements

Name of the student	Class	Sport	Award/Achievement
Nil	Nil	Nil	Nil

9. Research Activities (4 pages)

Identifies major research themes, places these themes in their social and economic context, highlights major research achievements (publications, collaborations, intellectual property produced, external funding received etc.), and profiles top researchers. Lays out the research agenda and identifies themes for the coming year.

- Major research themes

S. No.	Department	Prioritized research area and expertise	Social/ economic context
1	Nil	Nil	Nil

- Major/Minor research projects

S. No	Name of the Faculty	Year	Title of the project	Name of funding Agency/ Industry	Total grant received
1	Nil	Nil	Nil	Nil	Nil

- Papers presented in regional, national and international seminars/ conferences

S. No.	Name of the faculty	Regional/ State	National	International
1	Nil	Nil	Nil	Nil

- Publications in national/ international journals

S.No.	Name of the faculty	Name of the journal	Title of the paper	ISSN/ ISBN number /Impact factor
1	Nil	Nil	Nil	Nil

- List of linkages/ Collaborations/ MOUs

-----Nil-----

- College Publications: Research Journal, Magazine, Newsletter

Since College is not Registered in 12B so no research journal are publish.
--

10.Human Resources (2 pages)

Highlights senior faculty and administrative appointments. Describes what new areas of

activity (new courses, research areas, extracurricular activities etc.) and administrative improvements are enabled by these appointments.

1. Faculty and Administrative appointments: Teaching and Non-teaching

Positions	Teaching Faculty				Non Teaching Faculty	Technical Staff
	Prof	Promoted Prof	Assistant Prof	Guest Faculty		
Sanctioned by UGC/ University/ State Govt						
<i>Filled</i>	0	0	6	17	12	6
Sanctioned by Management/ Janbhagidari Samiti/ Other authority						
<i>Filled</i>	0	0	6	17	12	6

2. Guest Faculty: subject-wise appointments

S.no.	Name of the Guest Faculty	Qualification	Subject
1	Dheeraj Johnson	M.A.	Sociology
2	Manisha Sharma	M.A.	Economics
3	Jeevanlal Kurmi	M.A.	Economics
4	Dr. Namita Jain	M.Sc. Ph.D.	Zoology
5	Kaushik Shilpi	M.Sc.	Zoology
6	Hemlata Tamrakar	M.Sc.	Chemistry
7	Dr. Sanjeev Vishwakarma	M.A. Ph.D	Hindi
8	Dr. Kishori Soni	M.A. Ph.D	English
9	Dr. Gayatri Gupta	M.A. Ph.D	Sanskrit
10	Munnalal Suryavanshi	M.A., SLET	History
11	Dr. Rajendra Khare	M.A. Ph.D	English
12	Ku. Sohail Chakravarti	M.Sc.	Physics
13	Dr. Vijay Bahadur Choubey	M.Sc. Ph.D	Botany
14	Dr. Rajesh Pouranik	M.Sc. Ph.D	Maths
15	Dr. Anil Jain	M.A. Ph.D	Political Science
16	Dr. Surendra Tiwari	M.A. Ph.D	Political Science
17	Dr. Manoj Mishra	M.A. Ph.D	Political Science

3. Annual improvement in academic, research & administrative Initiatives

The Annual improvement in academic- in our institute there are number of the students is increased between last four year.

11. Events and Initiatives (5 pages)

Describes major events including seminars, conferences, competitions, student study trips etc. Focuses on what was achieved and learned, and how the college will follow up.

Describes significant academic, administrative, student support, fundraising, and other initiatives over the past year. The description of each initiative will be structured around the need for the initiative, how it was designed, what resources were used, what results were achieved, and which features of the initiative drove success.

-----Nil-----

12. Institutional Development plan (4 pages)

Describes the college's activities over the past year under different schemes, discusses performance against strategic/institutional development plans and commitments over the previous year.

Indicator*	Baseline Value	Target for [current year]	Value as on 30 th September [current year]
Career guidance Scheme	100 Students	200	120
NSS	133	100	80
Personality Development	300	250	258
Virtual Class	700	600	100
Sports	300	200	151

13. Role of Internal Quality Assurance Cell (IQAC) in academic audit and initiating quality assurance strategies and processes

IQAC is a very important cell to maintain the internal quality of the institution. It regulates the academic and non academic performance of the institution. IQAC conduct the meeting with the different head of departments of the college and decide the different mode of CCE and try to inspire faculty members to provide latest research work in their filed and use of ICT in their teacher learning process. This cell also promotes different literary and scholarly activates in the institution. In fact this cell transforms the vision of the institution into action. IQAC cell also takes feedback from the students for improvement in teaching learning process

Describes the college's placement cell activities, placement rate and salary statistics, and lists major employers and sectors of employment (disaggregated by gender and course studied). Profiles successful alumni and identifies emerging placement trends.

Activities of Placement Cell

S.no.	Name of the activity	Name of the Resource Person/ agency	Date & Duration
1	Alpavdhi Rojgaronmukhi Prashikshan	Beauty Parlour- Comp. Exam Prepration- Computer Software-	21 Days 21 Days 21 Days

Placement Details

S.no.	No. of Students Selected	List of employers/companies	Salary Package
1	Nil	Nil	Nil

Alumni Profile

S.no.	Name of Alumni	Employment status	Name of the organisation
1	Swapnes Nema	Self Employed	Restaurant
2	Bharti Jain	Self Employed	Beauty Parlour
3	Balmakund Vishwakarma	Post Office	Indian postal Depatment
4	Anand khatik	Constable	MP Police
5	Suneel Khatik	Teacher	MP School EDu.
6	Maya Athya	Teacher	Private School
7	Hemlata Sen	Teacher	Private School
8	Supriya Jain	Teacher	Govt Girls H S School
9	Chandana Dubey	Teacher	Govt Girls H S School

14. Innovations and Best Practices

Innovations: The innovation is a continues process of upgrading the existing resources and as well as adopting the new development in the field of automation and administration.

- The college administration gives top priority to use ICT technology at maximum.
- Establishment of Virtual/Smart class.
- Wi-Fi connectivity in the campus.
- Automation of library.
- Innovation towards e-governance, online creation of E.R. Sheets of Gazetted officers, creation of e-service book of Class III & IV, e-salary and online admission.
- Partial computerization of office.
- Online admissions, online examination forms and online fee deposit are being practice in the institutions. BEST PRACTICES –

The overall development of the student is the first priority of academic mechanism merely academic performance is not sufficient to face the challenges and threats of new economic development and globalization henceforth student must be prepared to face the challenges and solution of the problems. Youth festival & cultural activities provide the platform for the students of different segment and interest to express their feelings and creativity through different activities. The students represent college and can reach up to the national level by their talent. AS per the academic calendar our college organize the three day youth competition in the college. Selected candidates participate at the district level after university level and finally university sort listed candidates to represent the students at state level. Large number of the students participates in twenty two events every year. For these events performing students consult the faculty member for better presentation.

15. SWOC Analysis (strength , weaknesses, Opportunity and Challenges

Since this institute is located in extreme rural area so means of transport are very rare. Again since not registered in 12B so lack of finance is another major problem faced by the institute. Lack of separate building for departments is another problem. Besides above shortcomings the institute is doing its best to give education and produce efficient graduates and post graduated which may pass out from the institute to serve the nation.

16. Looking Ahead (3 pages) Future Plans

Lays out the college's priorities and goals over the coming year. Describes key initiatives planned, what each initiative is expected to achieve, and how it will contribute to the college's long term development.

Key Initiatives Planned/ implemented

S. No	Head (administrative/ academic, etc)	Nature of proposal	Expected Outcome
1	PG Departments Building	Academic	Qualified PG Scholars
2	Separate Library Building	Academic	For Quality teaching and learning
3	Common room for girls	Administrative	Beneficial for Female Girls
4	Professor Quarters	Administrative	Professors can give more time for Institute
5	Devolved Computer Lab	Administrative	For devolved computer skill of Students

17. Appendix: Institutional Performance Data and Financial Reports

Provides key data on the institution and its performance, including achievement against strategic plan targets and financial reports. This section is mandatory. All data fields must be completed, in the format and as per the instructions attached.

Part II

Appendix: Institutional Performance Data and Financial Reports (all part II data kindly fill in attached excel sheet)

1. Sanctioned seats and enrolment

(a) Sanctioned Seats					
	SC	ST	Other Reserved Categories	General	Total
Undergraduate	84	96	162	258	600
Postgraduate	22	25	43	70	160
PhD	0	0	0	0	0

Data Source: AISHE

(b) Enrolment							
		Undergraduate			Postgraduate		PhD
		Year 1	Year 2	Year 3	Year 1	Year 2	
SC	Male	52	68	29	7	8	
	Female	58	49	37	11	6	0
ST	Male	5	10	3	0	1	0
	Female	2	7	3	1	1	0
Other Reserved Categories	Male	227	202	86	20	9	0
	Female	273	217	116	29	16	0
General	Male	32	26	16	4	1	0
	Female	42	41	19	11	4	0
Total	Male	316	306	134	31	19	0
	Female	375	314	175	52	27	0

Data Source: AISHE

Number of sanctioned seats by discipline group and enrolment in the 1st year as on September 30th [current year]				
Discipline Group	Undergraduate		Postgraduate	
	Sanctioned Seats	Enrolment	Sanctioned Seats	Enrolment
Arts	500	499	120	51
Commerce	0	0	0	0
Criminology and Forensic Science	0	0	0	0
Cultural Studies	0	0	0	0
Defence Studies	0	0	0	0
Design	0	0	0	0
Disability Studies	0	0	0	0
Education	0	0	0	0
Fashion Technology	0	0	0	0
Fine Arts	0	0	0	0

Fisheries Science	0	0	0	0
Foreign Languages	0	0	0	0
Gandhian Studies	0	0	0	0
Home Science	0	0	0	0
Indian Languages	0	0	0	0
IT & Computer	0	0	0	0
Journalism and Mass Communication	0	0	0	0
Law	0	0	0	0
Library and Information Science	0	0	0	0
Linguistics	0	0	0	0
Management	0	0	0	0
Marine Science and Oceanography	0	0	0	0
Oriental Learning	0	0	0	0
Physical Education	0	0	0	0
Religious Studies	0	0	0	0
Science	250	192	40	32
Social Science	0	0	0	0
Social Work	0	0	0	0
Women Studies	0	0	0	0

Data Source: AISHE

2. Transition and on-time graduation

(a) Transition from the 1st year to the 2nd year (Undergraduate)				
		Number of students admitted to the 1 st year in [the previous academic year] (*)	Of (*), the number of students currently enrolled in the 2 nd year who:	
			Passed all subjects in the 1 st year	Were Allowed to Keep Terms
SC	Male	52	32	3
	Female	58	45	5
ST	Male	5	2	1
	Female	3	1	2
Other Reserved Categories	Male	227	147	26
	Female	273	210	39
General	Male	32	18	5
	Female	42	28	11
Total	Male	316	199	35
	Female	375	284	57

Data Source: AISHE, examination results declared by [affiliating university/autonomous college]

(b) Transition from the 1st year to the 2nd year (Postgraduate)				
		Number of students admitted to the 1 st year in [the previous academic year] (*)	Of (*), the number of students currently enrolled in the 2 nd year who:	
			Passed all subjects in the 1 st year	Were Allowed to Keep Terms
SC	Male	7	5	2
	Female	11	9	1
ST	Male	0	0	0
	Female	1	1	0
Other Reserved Categories	Male	20	15	3
	Female	29	20	4
General	Male	4	3	1
	Female	11	9	1
Total	Male	31	23	6
	Female	52	39	6

Data Source: AISHE, examination results declared by [affiliating university/autonomous college]

(c) On-time graduation (Undergraduate)			
		Number of students admitted to the 1 st year in [year t-3] (*)	Of (*), the number of students who passed all final year examinations for the previous academic year
SC	Male	72	24
	Female	58	33
ST	Male	6	2
	Female	6	5
Other Reserved Categories	Male	218	78
	Female	184	114
General	Male	30	14
	Female	35	20
Total	Male	326	118
	Female	283	172

Data Source: AISHE, examination results declared by [affiliating university/autonomous college]

(d) On-time graduation (Postgraduate)			
		Number of students admitted to the 1 st year in [year t-2] (*)	Of (*), the number of students who passed all final year examinations in the current year
SC	Male	14	9
	Female	7	4
ST	Male	1	1

	Female	1	1
Other Reserved Categories	Male	18	12
	Female	22	15
General	Male	5	3
	Female	5	3
Total	Male	38	25
	Female	35	23

Data Source: AISHE, examination results declared by [affiliating university/autonomous college]

3. Faculty and administrative staff in position and training

(a) Faculty and administrative staff in position as on 30 th September, [current year]							
		Reserved					Unreserved
		SC	ST	MP Residents	Females	Others	
Assistant Professor	Sanctioned						
	Filled (Regular)	5	0	5	1	0	1
	Filled (Contract)	0	0	0	0	0	0
	Guest Lecturers	2	0	17	6	5	10
Associate Professor	Sanctioned	0	0	0	0	0	0
	Filled (Regular)	0	0	0	0	0	0
	Filled (Contract)	0	0	0	0	0	0
	Guest Lecturers	0	0	0	0	0	0
Professor	Sanctioned	0	0	0	0	0	0
	Filled (Regular)	0	0	0	0	0	0
	Filled (Contract)	0	0	0	0	0	0
	Guest Lecturers	0	0	0	0	0	0
Admin. Staff (all)	Sanctioned	0	0	0	0	0	0
	Filled (Regular)	0	0	0	0	0	0
	Filled (Contract)	0	0	0	0	0	0
Accountant	Sanctioned	0	0	0	0	0	0
	Filled (Regular)	0	0	0	0	0	0
	Filled (Contract)	0	0	0	0	0	0

Data Source: AISHE

(b) Training of faculty and administrative staff between October 1st [previous year] to September 30th [current year]				
		Leadership and management training	Training in the area of academic specialisation	Other training
Assistant Professor	Number trained	0	6	0
	Avg. number of days	0	21	0
Associate Professor	Number trained	0	0	0
	Avg. number of days	0	0	0
Professor	Number trained	0	0	0
	Avg. number of days	0	0	0
Administrative Staff (all)	Number trained	0	0	0
	Avg. number of days	0	0	0
Accountant	Number trained	0	0	0
	Avg. number of days	0	0	0

Data Source: Compiled from training certificates submitted by faculty/administrative staff

(c) Faculty qualifications as on 30th September, [Current Year]					
		PhD	Postgraduate	Undergraduate	Others
Assistant Professor	Regular	6	6	6	0
	Contract	0	0	0	0
	Guest Lecturers	12	17	17	0
Associate Professor	Regular	0	0	0	0
	Contract	0	0	0	0
	Guest Lecturers	0	0	0	0
Professor	Regular	0	0	0	0
	Contract	0	0	0	0
	Guest Lecturers	0	0	0	0

Data Source: AISHE

4. Student support services

(a) Financial support received (from all sources) by students in the college between October 1 st [previous year] to September 30 th [current year]							
		Undergraduate		Postgraduate		PhD	
		Number	Average Value (Rs.)	Number	Average Value (Rs.)	Number	Average Value (Rs.)
SC	Male	133	696800	11	80010	0	0
	Female	137	655207	16	116860	0	0
ST	Male	13	53305	2	16860	0	0
	Female	12	66395	1	6840	0	0
General	Male	0	0	0	0	0	0
	Female	0	0	0	0	0	0
Total	Male	146	750105	13	96870	0	0
	Female	149	721602	17	123700	0	0

Data Source: AISHE

(a) Financial support received, from the DHE, by students in the college between October 1 st [previous year] to September 30 th [current year]							
		Undergraduate		Postgraduate		PhD	
		Number	Average Value (Rs.)	Number	Average Value (Rs.)	Number	Average Value (Rs.)
SC	Male	0	0	0	0	0	0
	Female	60	300000	0	0	0	0
ST	Male	0	0	0	0	0	0
	Female	2	10000	0	0	0	0
General	Male	4	5710	0	0	0	0
	Female	54	270000	0	0	0	0
Total	Male	4	5710	0	0	0	0
	Female	116	580000	0	0	0	0

Data Source: College records, DHE

(b) Hostel occupancy as on 30 th September, [Current Year] (all hostels)		
Capacity	Number of residents	
Males:		
Females:		
SC	Male	15
	Female	0
ST	Male	0
	Female	0
General	Male	0
	Female	0
Total	Male	15
	Female	0

Data Source: Hostel register verified against fee receipts on record

(c) Hostel occupancy as on 30 th September, [Current Year] (girls only hostels opened after _____)	
Capacity	Number of residents
SC	0
ST	0
General	0
Total	0

Data Source: Hostel register verified against fee receipts on record

5. Examination Results

(a) Examination results for [previous academic year] (undergraduate)											
		SC		ST		Other Reserved Categories		General		Total	
		M	F	M	F	M	F	M	F	M	F
1st year	Appeared	52	58	5	3	227	272	32	42	316	375
	1 st division	20	25	2	1	90	8	10	12	122	46
	2 nd Division	10	15	1	0	100	9	11	11	122	35
	3 rd Division	10	5	1	1	15	7	5	10	31	23
2nd year	Appeared	10	11	5	2	170	223	21	34	206	270
	1 st division	10	15	1	2	40	40	3	6	54	63
	2 nd Division	30	10	2	2	100	100	10	8	142	120
	3 rd Division	3	5	0	1	15	20	2	5	20	31
3rd year	Appeared	72	58	6	6	218	184	30	35	326	283
	1 st division	20	18	1	2	92	54	9	12	122	86
	2 nd Division	25	20	3	1	101	82	15	13	144	116
	3 rd Division	10	10	1	1	10	20	12	5	33	36

Data Source: AISHE, Examination results declared by [affiliating university/autonomous college]

(a) Examination results for [previous academic year] (postgraduate)											
		SC		ST		Other Reserved Categories		General		Total	
		M	F	M	F	M	F	M	F	M	F
1st year	Appeared	7	11	0	1	20	29	4	11	31	52
	1 st division	3	4	0	0	5	8	1	5	9	17
	2 nd	2	2	0	1	10	15	1	4	13	22

	Division										
	3 rd Division	0	1	0	0	3	3	0	0	3	4
2 nd year	Appeared	14	7	1	1	18	22	5	5	38	35
	1 st division	3	2	0	0	5	7	2	2	10	11
	2 nd Division	5	3	1	1	5	10	2	2	13	16
	3 rd Division	0	0	0	0	0	0	0	0	0	0

Data Source: AISHE, Examination results declared by [affiliating university/autonomous college]

6. Placement and student tracking

(a) Placement and Tracking of Students who graduated in [previous academic year] (Undergraduate)						
		Number of students who graduated in [the previous academic year] (*)	Of (*), the number of students who were successfully tracked and are:			
			Employed/ Self-employed	In education/ training	Unemployed	Not in the labour force
SC	Male	24	12	5	5	0
	Female	33	10	10	10	0
ST	Male	2	1	1	0	0
	Female	5	2	1	1	0
General	Male	14	10	2	1	0
	Female	20	8	9	0	0
Total	Male	40	23	8	6	0
	Female	58	20	20	11	0

Data Source: Records of the college placement cell

(b) Placement and Tracking of Students who graduated in [previous academic year] (Postgraduate)						
		Number of students who graduated in [the previous academic year] (*)	Of (*), the number of students who were successfully tracked and are:			
			Employed/ Self-employed	In education/ training	Unemployed	Not in the labour force
SC	Male	9	2	4	1	0
	Female	4	1	1	1	0
ST	Male	1	1	0	0	0
	Female	1	0	0	1	0

General	Male	3	1	1	1	0
	Female	3	1	1	1	0
Total	Male	13	4	5	2	0
	Female	8	2	2	3	0

Data Source: Records of the college placement cell

7. PhDs Awarded

Number of PhDs awarded between October 1st [previous year] to September 30th [current year]	
Discipline Group	Number
Arts	0
Commerce	0
Criminology and Forensic Science	0
Cultural Studies	0
Defence Studies	0
Design	0
Disability Studies	0
Education	0
Fashion Technology	0
Fine Arts	0
Fisheries Science	0
Foreign Languages	0
Gandhian Studies	0
Home Science	0
Indian Languages	0
IT & Computer	0
Journalism and Mass Communication	0
Law	0
Library and Information Science	0
Linguistics	0
Management	0
Marine Science and Oceanography	0
Oriental Learning	0
Physical Education	0
Religious Studies	0
Science	0
Social Science	0
Social Work	0
Women Studies	0
Literature	0
Other	0
All disciplines	0

Data Source: AISHE

8. Research and consultancy

Revenue generated through externally funded research and consultancies over [previous financial year]		
Discipline Group	Number of active projects	Total Revenue Generated (Rs. lakhs)
Arts	0	0
Commerce	0	0
Criminology and Forensic Science	0	0
Cultural Studies	0	0
Defence Studies	0	0
Design	0	0
Disability Studies	0	0
Education	0	0
Fashion Technology	0	0
Fine Arts	0	0
Fisheries Science	0	0
Foreign Languages	0	0
Gandhian Studies	0	0
Home Science	0	0
Indian Languages	0	0
IT & Computer	0	0
Journalism and Mass Communication	0	0
Law	0	0
Library and Information Science	0	0
Linguistics	0	0
Management	0	0
Marine Science and Oceanography	0	0
Oriental Learning	0	0
Others / Inter-disciplinary	0	0
Physical Education	0	0
Religious Studies	0	0
Science	0	0
Social Science	0	0
Social Work	0	0
Veterinary and Animal Sciences	0	0
Women Studies	0	0
All disciplines	0	0

Data Source: College/university records

Number of papers published in peer-reviewed journals between October 1 st [previous year] to September 30 th [current year]			
Discipline Group	Number of papers published		Number of published papers through cross-institute research collaboration
	International Journals	National Journals	
Arts	0	0	0
Commerce	0	0	0
Criminology and Forensic Science	0	0	0
Cultural Studies	0	0	0
Defence Studies	0	0	0
Design	0	0	0
Disability Studies	0	0	0
Education	0	0	0
Fashion Technology	0	0	0
Fine Arts	0	0	0
Fisheries Science	0	0	0
Foreign Languages	0	0	0
Gandhian Studies	0	0	0
Home Science	0	0	0
Indian Languages	0	0	0
IT & Computer	0	0	0
Journalism and Mass Communication	0	0	0
Law	0	0	0
Library and Information Science	0	0	0
Linguistics	0	0	0
Management	0	0	0
Marine Science and Oceanography	0	0	0
Oriental Learning	0	0	0
Others / Inter-disciplinary	0	0	0
Physical Education	0	0	0
Religious Studies	0	0	0
Science	0	0	0
Social Science	0	0	0
Social Work	0	0	0
Women Studies	0	0	0
All disciplines	0	0	0

Date Source: College records based on published papers submitted by faculty

9. NAAC accreditation and UGC autonomy

	Date of Application (LOI & SSR submitted)	Date on which accreditation was received	Grade	Valid till
1 st Cycle	0	0	nil	nil
2 nd Cycle	0	0	nil	nil
3 rd Cycle	0	0	nil	nil

Date of submission of the Annual Quality Assurance Report for the current year: _____.

Does the college have currently valid UGC autonomy? **No** . If yes, by order number _____, dated _____.

10. Institutional Trends

Variable	Baseline Value	[Year 1]	[Year 2]	[Year 3]	[Year 4]	Current Year
Percentage of sanctioned seats in the 1 st year filled (undergraduate, all categories)	98%	98%	90%	90%	90%	97%
Percentage of sanctioned seats in the 1 st year filled (postgraduate, all categories)	80%	80%	75%	80%	80%	75%
Transition rate from the 1 st year to the 2 nd year (undergraduate, all categories)	75	60%	60%	60%	65%	70%
On-time graduation rate (undergraduate, all categories)	75	50	55	53	57	55
Transition rate from the 1 st year to the 2 nd year (post graduate, all categories)	90	60%	63%	65%	67	60
On-time graduation rate (postgraduate, all categories)	90	72%	75%	70%	73	71
Regular faculty in position rate (all levels, reserved categories)	30	30%	30%	30%	30	30
Regular faculty in position rate (all levels, unreserved categories)	30	30%	30%	30%	30	30
Percentage of regular faculty with PhDs (all levels)	95	95%	95%	75%	75	75

Employment rate of graduates from the previous academic year (undergraduate, all categories)	20	12	15	18	20	19
Employment rate of graduates from the previous academic year (postgraduate, all categories)	15	10	12	11	10	9
Percentage of total revenue generated through externally funded research	0	0	0	0	0	0
Number of papers published in peer-reviewed, international journals	0	0	0	0	0	0

Source: Tables under section 1-8.

11. Financial Reports

Name and registration number of the auditor Shri Dusyant Goyal

Number of audit observations recorded by the auditor -07

Number of audit responses found satisfactory, as certified by the project directorate -07

Certified audit reports as per the standard Chart of Accounts to be attached.

12. All India Survey of Higher Education

Date on which all applicable fields of the Data Collection Format for the All India Survey of Higher Education were completed and submitted 30 September 2017