

Annual Report 2017-18

This format outlines the annual reports to be published by all colleges in the Madhya Pradesh on their websites, by October 31st of each year. Part I is intended as a guide and colleges are free to alter the contents and format as they see fit. Part II, the Appendix (Institutional Performance Data and Financial Reports), is mandatory and colleges are required to report all data as per the attached format and instructions.

Important Information –

- Name of the college –Govt. College Barghat
- Place of the college -Barghat
- District -Seoni
- Division -Jabalpur
- Year of establishment of college -1889
- Name and Contact details(Mail id , Phone) of Principal -07692-250274
- Name , Post and Contact details of (mail id, Phone no.) of Reporting In charge – barghatcollege@yahoo.com
- Date of report submission -16-03-2017

Part I

- 1. The Principal's Report (2 pages)-** Highlights the key activities, events, and successes of the past year and briefly describes major new initiatives to be undertaken over the next year.

I. Curricular Aspects:

The institution has a curriculum designed by Rani Durgawati V.V. Jabalpur (MP) in accordance with the norms set by the Dept. of Higher Education, M.P. The institution follows all standards for the effective implementation of the curriculum. Co-curricular activities are also conducted according to the time table of the University. Workshops, debates, seminars, job oriented projects and industrial visits help to develop the unrevealed potential and skills of students. Students do take part in the extracurricular activities in Youth Festival, Annual Function, Sports etc. which aims at the development of the character and values which help and build them to be responsible citizens of the nation. The strength of student is 2206 in the year 2017-18

II. Teaching, Learning and Evaluation:

From the year 2012- 13, the process of admission has been online by M.P. Higher Education and hence gives a transparent and fair method. Definite percentage of seats is reserved for various categories like SC/ST/OBC students. Due weight age in admission is given to outstanding achievers in sports and other curricular activities. Our college initiates innovative methods of teaching, learning and evaluation like group discussion, OHP charts, learning through Smart Class etc. which make learning a process of con striation of knowledge. The teachers prepare teaching plan and maintain a work diary. The faculty members are motivated constantly for taking part in refresher and orientation courses outside the college. Our library is partly computerized and the laboratories are well equipped to improve the quality of teaching and learning. Evaluation system is performed through CCE, project internship and semester exams. The result of various faculties is very good. Some students also got position in Rani Durgawati University Jabalpur (M.P.)

III. Research Consultancy and Extension :

The institution promotes research culture among faculty members. one UGC National Seminars were organized in 2nd,3rd March, 2015 in the Department of Library on utility of soul software For Library Auto mation. College renders peerless services to the society through NSS. NSS carries out various programs and are recognized for their outstanding achievement. To strengthen the support services with regard to placement of students, the career cell is striving hard for guiding students through workshops and counseling. Basic It many other comers gradution service and job oriented course are provide through IGNOU , and other many examtion are conducte by vyapam and ignou.

IV. Infrastructure and Learning Resources:

The infrastructure of the college has been expanded to meet the requirement of curriculum and student related services. The college has a well maintained campus include Smart classroom, Virtual class and four labs. The library of our college has inflibinet facilities. Access to the library materials is open to all the users including staff and students. The network resource center of college provides basic computer training to students. There is a reading room attached with library where the students and teachers can sit and read.

V. Student Support and Progression:

Our college provides quality education that imparts knowledge skills and values created for becoming responsible citizens. Students are given necessary support, guidance and counseling for their overall development and progress. Scholarships are given to students belonging to SC/ST/OBC and economically weaker section. Books are issued during the academic session n from Book Bank Yojna. Slow learners are supported well to avoid dropouts through extra classes. Faculty members provide counseling to students for preparation for competitive exams like bank, civil services, UGC/CSIR NET, SLET examinations, etc. college has an alumni association. The transformation change experienced by the students from admission level to exit level stands as proof of the excellence in student support system offered by the college. Personality development programme as directed by higher education is organized from time to time.

VI. Governance Leadership and Management:

The efficient governance provided by the head of institution upholds an eminent environment in college. The leadership leads to college with clear vision and mision of the college/institution. Out institution has strong urge for excellence and will continue to pursue it. The statutory bodies like IQAC, finance committee, administration, examination, purchase, anti-ragging committees work directly under the supervision of the principal and the coordination helps in creating a positive and wholesome environment which is the core value of the institution. The college started the dress code of the student from 2012. Our staff members including guest faculties are character wise sound. There is not any case of woman exploitation In our college.

VII. Innovation and Best Practice:

Institution has made innovative and flawless efforts helpful in achieving academic excellence; moral and ethical values such as social justice, eco consciousness, sense of equality are inculcated in the minds of students through community oriented extension services carried out by the institution. To promote research, the college encourages faculty members to take part in research, seminars and conferences. The college is situated at tashil place students come form rural area this college has adopted extra coaching classes to improving the academic skills of socety. As a result Due to such provision some student are aworded by university time to time NSS(Nation Sevies Scheme) are conducting college got many shieldes and PRASHASTI PATRAS by university and others personalty.This year target of the NSS Students is to spread awareness about cleanness.

2. Overview (1 page)

(i) Vision, Mission and Objectives of the college

VISION : The institute aims to provides quality education, to develop all-round personality and to impart vocational skills among young women to enable them to play an active and meaningful rule in the society. The institute also aims to become model college.

MISION : To motivate students to going knowledge through various academic and extra curricular activities. To strive for the student's all-round development.

To achieve excellence in arts, science, commerce, home science education.

To impart quality education in different disciplines.

To strive for better results.

To develop secular sprit and religious tolerance.

(ii) Brief introduction of the college (including the status (Govt. / Lead/ Constituent/ Affiliated/ Private),Parent University, UGC recognition, CPE status, etc), location & campus area

Govt. College Barghat is situated in the locality of Salhe road approximately 1.00 KM from Barghat bus stand. The college is well connected Seoni To Balaghat State High Way. The college has Post graduate and Under graduate departments with Arts, Commerce and Science faculty but Commerce and Science faculty is managing by self finance scheme that is JANBHAGIDARI College is affiliated with Rani Durgawati University since 1996. College also has a special study center of IGNOU(15112D) in the campus. College is having all the facilities including good classrooms, library reading rooms, girls common room, drinking water, toilets, computer labs, practical labs and a huge sport's ground. NSS activities are also conducted in the college.

(iii) History of the college with significant milestones

Govt. College Barghat is situated in the locality of Salhe road approximately 1.00 KM from Barghat bus stand. The college is well connected Seoni To Balaghat State High Way. The college has Post graduate and Under graduate departments with Arts, Commerce and Science faculty but Commerce and Science faculty is managing by self finance scheme that is JANBHAGIDARI College is affiliated with Rani Durgawati University since 1996. College also has a special study center of IGNOU(15112D) in the campus. College is having all the facilities including good classrooms, library reading rooms, girls common room, drinking water, toilets, computer labs, practical labs and a huge sport's ground. NSS activities are also conducted in the college.

(iv) Faculties and major disciplines

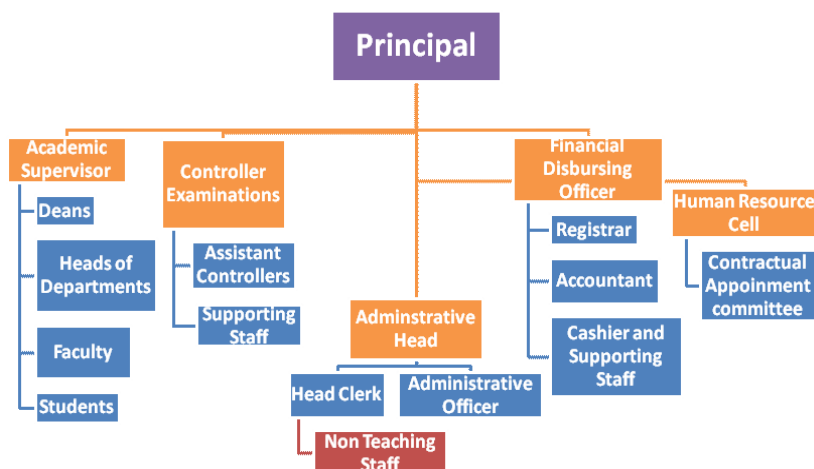


3. Senior Management Team and Board of Governors (1 page)

Lists the members of the senior management team (Principal, Registrar, Deans etc.) and members of the Board of Governors including their designations and professional backgrounds.

Administrative Hierarchy

For example -:



List of Chairperson/members of Statutory Bodies like Board of Governors/ Executive Committee/ Academic Council/ Janbhagidari Samiti, etc

4. Admission Statistics (1 page)

- The number of applicants at the UG and PG level who ranked the college as their 1st, 2nd and 3rd preference, the number of applications received for PhD courses, and the number of students admitted at each level as per the following format.

Applications	UG	PG	PhD
Applications that ranked the college as the 1 st preference	655	108	NA
Applications that ranked the college as the 2 nd preference	638	27	
Applications that ranked the college as the 3 rd preference	628	-	
Total number of applications received	1921	135	
Number of students admitted	1921	135	

Data Source: E-pravesh portal, records of the affiliating university

- A brief demographic profile of students admitted (in terms of gender, caste, whether from MP etc.)

Name of the Course	Gender	Category	% of students from the State	% of students from other states
Arts	Male/Female	GEN/ST/SC/OBC	100%	0%
Science	Male/Female	GEN/ST/SC/OBC	100%	
Commerce	Male/Female	GEN/ST/SC/OBC	100%	

5. Academic Programs: Core Programs - UG & PG

Core programs at UG level

Stream	Name of the Core Program	Eligibility	Optional subjects
Arts	Bachelor of Arts	10+2 from a recognized Board OR 10+2 with relevant vocational course from M.P. Board	Foundation course + a group of 3 optional subjects
Commerce	Bachelor of	10+2 from a	

	Commerce	recognized Board OR 10+2 with relevant vocational course from M.P. Board	Foundation course + a group of Compulsory Subject
Science	Bachelor of Science	10+2 from a recognized Board OR 10+2 with relevant vocational course from M.P. Board	Foundation course + a group of 3 optional subjects

Core Options at PG level

Faculty	Name of the Core Program	Eligibility	Subject Options
<i>E.g. Arts</i>	<i>Master of Arts</i>	<i>3 year Degree course in any faculty/ Honors degree course in same subject</i>	<i>No. of subjects 03 Hindi, Economics, Geography</i>

M.Phil/ Ph.D. Programs

S.no.	Subject	Eligibility	No. of scholars registered
No			

**PG Diploma/ Diploma/ Certificate/ Self-financed/ Skill based Vocational/
Short term courses**

Name of the Course	Department	Duration	Fees	Seats
No				

6. Academic Calendar 20 17 -18

Academic Work	First/ Semester	Third/ Fifth	Second/ Fourth/ Sixth Semester
Orientation Classes/Zero Classes/SWOT analysis			
Teaching and Continuous Comprehensive Evaluation	CCE		CCE /Project Work for Sixth Semester
CCE Schedule	Oct. – Nov.		March
Preparation Leave			

Practical Exams (Graduation/Post Graduation)		
Semester and ATKT Exams		
Declaration of Examination Results		
Semester Break (for students)		
Semester Break (for teachers)		

7. The Student Experience (4 pages)

Briefly describes student life in the college:

- Infrastructural facilities available to students - Classrooms, Smart classrooms, laboratories and equipment, Common Research Lab, Hostel; Canteen; Garden; Students common room, Auditorium, Sports Complex & other facilities

yes

- Library as a learning resource- advisory committee, its composition, facilities & services (e & print), annual improvement initiatives

yes

- Student support services:
 - ✓ IT enabled services

yes

&

yes

- ✓ Personal enhancement & development schemes- NCC, NSS, Facilities for physically challenged & slow learners; Tutor-Guardian Scheme, Grievance Redressal Cell, Entrepreneurship Cell, Remedial classes, Career Guidance Cell.

Yes

- ✓ Extracurricular activities: Calendar of activities (Sports, Youth Festival, cultural and literary events), Achievements, Awards

yes

✓ Major student welfare initiatives over the past year

yes

- Extension Activities

yes

- Publications in national/ international journals

S.No.	Name of the faculty	Name of the journal	Title of the paper	ISSN/ ISBN number /Impact factor
	No			

- List of linkages/ Collaborations/ MOUs

No

- College Publications: Research Journal, Magazine, Newsletter

No

10. Human Resources (2 pages)

Highlights senior faculty and administrative appointments. Describes what new areas of activity (new courses, research areas, extracurricular activities etc.) and administrative improvements are enabled by these appointments.

1. Faculty and Administrative appointments: Teaching and Non-teaching

Positions	Teaching Faculty				Non Teaching Faculty	Technical Staff
	Prof	Promot	Assista	Guest		
Sanctioned by	Prof	Promot	Assista	Guest		0

UGC/ University/ State Govt		ed Prof	nt Prof	Faculty		
<i>Filled</i>	-	-	03	05	11	
Sanctioned by Management/ Janbhagidari Samiti/ Other authority						
<i>Filled</i>				20	10	

2. Guest Faculty: subject-wise appointments

S.no.	Name of the Guest Faculty	Qualification	Subject
1	Bablee Chandel	NET	Geography
2	Sateesh Suryawanshi	M.Phil	English
3	Sabnam Khan	Net	Economics
4	Chhatrapal jatav	NET	Geography
5	Arti Tiwari	P.hd	Political Science
6	Kamlesh Tembre	M.Ped	Sports

3. Annual improvement in academic, research & administrative Initiatives

No

11.Events and Initiatives (5 pages)

Describes major events including seminars, conferences, competitions, student study trips etc. Focuses on what was achieved and learned, and how the college will follow up.

Describes significant academic, administrative, student support, fundraising, and other initiatives over the past year. The description of each initiative will be structured around the need for the initiative, how it was designed, what resources were used, what results were achieved, and which features of the initiative drove success.

Carrier Guidance Programme , Red Ribbon Work Shop , Excursion Trip

12. Institutional Development plan (4 pages)

Describes the college’s activities over the past year under different schemes, discusses performance against strategic/institutional development plans and commitments over the previous year.

Indicator*	Baseline Value	Target for [current year]	Value as on 30 th September [current year]
Plantation		Renovation of college building	24 lakh
Botanical Garden			

Role of Internal Quality Assurance Cell (IQAC) in academic audit and initiating quality assurance strategies and processes

Smart Room

13. Placement Report (3 pages)

Describes the college’s placement cell activities, placement rate and salary statistics, and lists major employers and sectors of employment (disaggregated by gender and course studied). Profiles successful alumni and identifies emerging placement trends.

Activities of Placement Cell

S.no.	Name of the activity	Name of the Resource Person/ agency	Date & Duration
	No		

Placement Details

S.no.	No. of Students Selected	List of employers/companies	Salary Package
	No		

Alumni Profile

S.no.	Name of Alumni	Employment status	Name of the organisation
	No		

14. Innovations and Best Practices

No
Language faults, Hesitation

16.Looking Ahead (3 pages) Future Plans

Lays out the college’s priorities and goals over the coming year. Describes key initiatives planned, what each initiative is expected to achieve, and how it will contribute to the college’s long term development.

Key Initiatives Planned/ implemented

S. No	Head (administrative/ academic, etc)	Nature of proposal	Expected Outcome
1	Self Defence Classes for Girls	College Level	Make them able to fight against crime
2	Get rid of Raging from college campus	College Level	To enhance educational quality
3	Dress Code	College Level	Unity & Strength
4	Smart Classes	College Level	Quality Education
5	Taking Parts in curriculum Activity	College Level	Personality Development
6	Formation of Discipline Committee	College Level	Unity & Strength
8	Neat & Clean College Campus	College Level	

17.Appendix: Institutional Performance Data and Financial Reports

Provides key data on the institution and its performance, including achievement against strategic plan targets and financial reports. This section is mandatory. All data fields must be completed, in the format and as per the instructions attached.

Part II

Appendix: Institutional Performance Data and Financial Reports (all part II data kindly fill in attached excel sheet)

1. Sanctioned seats and enrolment

(a) Sanctioned Seats					
	SC	ST	Other Reserved Categories	General	Total
Undergraduate	190	238	166	595	1189
Postgraduate	26	32	23	81	162
PhD	-	-	-	-	-

Data Source: AISHE

(b) Enrolment							
		Undergraduate			Postgraduate		PhD
		Year 1	Year 2	Year 3	Year 1	Year 2	
SC	Male	17	05	13	04	00	-
	Female	15	09	17	06	03	-
ST	Male	32	29	19	03	04	-
	Female	54	31	51	16	09	-
Other Reserved Categories	Male	80	53	35	21	04	-
	Female	187	160	164	56	06	-
General	Male	05	06	06	00	01	-
	Female	04	06	04	00	00	-
Total	Male	134	93	73	28	09	-
	Female	260	206	236	78	18	-

Data Source: AISHE

Number of sanctioned seats by discipline group and enrolment in the 1st year as on September 30th [current year]				
Discipline Group	Undergraduate		Postgraduate	
	Sanctioned Seats	Enrolment	Sanctioned Seats	Enrolment
Arts	525	525	132	132
Commerce	160	160		
Criminology and Forensic Science	-	-	-	-
Cultural Studies	-	-	-	-
Defence Studies	-	-	-	-
Design	-	-	-	-
Disability Studies	-	-	-	-
Education	-	-	-	-
Fashion Technology	-	-	-	-
Fine Arts	-	-	-	-

Fisheries Science	-	-	-	-
Foreign Languages	-	-	-	-
Gandhian Studies	-	-	-	-
Home Science	-	-	-	-
Indian Languages	-	-	-	-
IT & Computer	-	-	-	-
Journalism and Mass Communication	-	-	-	-
Law	-	-	-	-
Library and Information Science	-	-	-	-
Linguistics	-	-	-	-
Management	-	-	-	-
Marine Science and Oceanography	-	-	-	-
Oriental Learning	-	-	-	-
Physical Education	-	-	-	-
Religious Studies	-	-	-	-
Science	-	-	-	-
Social Science	-	-	-	-
Social Work	-	-	-	-
Women Studies	-	-	-	-

Data Source: AISHE

2. Transition and on-time graduation

(a) Transition from the 1st year to the 2nd year (Undergraduate)				
		Number of students admitted to the 1 st year in [the previous academic year] (*)	Of (*), the number of students currently enrolled in the 2 nd year who:	
			Passed all subjects in the 1 st year	Were Allowed to Keep Terms
SC	Male	17	17	Yes
	Female	15	15	Yes
ST	Male	32	32	Yes
	Female	54	54	Yes
Other Reserved Categories	Male	80	80	Yes
	Female	127	127	Yes
General	Male	05	05	Yes
	Female	04	04	Yes
Total	Male	134	134	
	Female	260	260	

Data Source: AISHE, examination results declared by [affiliating university/autonomous college]

(a) Transition from the 1st year to the 2nd year (Postgraduate)		
	Number of students admitted	Of (*), the number of students currently enrolled in the 2 nd year who:

		to the 1 st year in [the previous academic year] (*)	Passed all subjects in the 1 st year	Were Allowed to Keep Terms
SC	Male	04	04	Yes
	Female	06	06	Yes
ST	Male	03	03	Yes
	Female	16	16	Yes
Other Reserved Categories	Male	21	21	Yes
	Female	56	56	Yes
General	Male	00	00	Yes
	Female	00	00	Yes
Total	Male	28	28	
	Female	78	78	

Data Source: AISHE, examination results declared by [affiliating university/autonomous college]

(b) On-time graduation (Undergraduate)			
		Number of students admitted to the 1 st year in [year t-3] (*)	Of (*), the number of students who passed all final year examinations for the previous academic year
SC	Male		
	Female		
ST	Male		
	Female		
Other Reserved Categories	Male		
	Female		
General	Male		
	Female		
Total	Male		
	Female		

Data Source: AISHE, examination results declared by [affiliating university/autonomous college]

(b) On-time graduation (Postgraduate)			
		Number of students admitted to the 1 st year in [year t-2] (*)	Of (*), the number of students who passed all final year examinations in the current year
SC	Male		
	Female		
ST	Male		
	Female		
Other Reserved Categories	Male		
	Female		

General	Male		
	Female		
Total	Male		
	Female		

Data Source: AISHE, examination results declared by [affiliating university/autonomous college]

3. Faculty and administrative staff in position and training

(a) Faculty and administrative staff in position as on 30th September, [current year]							
		Reserved					Unreserved
		SC	ST	MP Residents	Females	Others	
Assistant Professor	Sanctioned						
	Filled (Regular)	01	02	-	00	00	00
	Filled (Contract)						
	Guest Lecturers	01	00	-	03	02	00
Associate Professor	Sanctioned						
	Filled (Regular)						
	Filled (Contract)						
	Guest Lecturers						
Professor	Sanctioned						
	Filled (Regular)						
	Filled (Contract)						
	Guest Lecturers						
Admin. Staff (all)	Sanctioned						
	Filled (Regular)						
	Filled (Contract)						
Accountant	Sanctioned						
	Filled (Regular)						
	Filled (Contract)						

Data Source: AISHE

(b) Training of faculty and administrative staff between October 1st [previous year] to September 30th [current year]			
	Leadership and management training	Training in the area of academic	Other training

			specialisation	
Assistant Professor	Number trained			
	Avg. number of days			
Associate Professor	Number trained			
	Avg. number of days			
Professor	Number trained			
	Avg. number of days			
Administrative Staff (all)	Number trained		N/A	
	Avg. number of days		N/A	
Accountant	Number trained		N/A	
	Avg. number of days		N/A	

Data Source: Compiled from training certificates submitted by faculty/administrative staff

(c) Faculty qualifications as on 30 th September, [Current Year]					
		PhD	Postgraduate	Undergraduate	Others
Assistant Professor	Regular				
	Contract				
	Guest Lecturers				
Associate Professor	Regular				
	Contract				
	Guest Lecturers				
Professor	Regular				
	Contract				
	Guest Lecturers				

Data Source: AISHE

4. Student support services

(a) Financial support received (from all sources) by students in the college between October 1 st [previous year] to September 30 th [current year]							
		Undergraduate		Postgraduate		PhD	
		Number	Average Value (Rs.)	Number	Average Value (Rs.)	Number	Average Value (Rs.)
SC	Male						
	Female						
ST	Male						

	Female						
General	Male						
	Female						
Total	Male						
	Female						

Data Source: AISHE

(a) Financial support received, from the DHE, by students in the college between October 1 st [previous year] to September 30 th [current year]							
		Undergraduate		Postgraduate		PhD	
		Number	Average Value (Rs.)	Number	Average Value (Rs.)	Number	Average Value (Rs.)
SC	Male						
	Female						
ST	Male						
	Female						
General	Male						
	Female						
Total	Male						
	Female						

Data Source: College records, DHE

(b) Hostel occupancy as on 30 th September, [Current Year] (all hostels)		
Capacity Males: Females:	Number of residents	
SC	Male	
	Female	
ST	Male	
	Female	
General	Male	
	Female	
Total	Male	
	Female	

Data Source: Hostel register verified against fee receipts on record

(c) Hostel occupancy as on 30 th September, [Current Year] (girls only hostels opened after _____)	
Capacity	Number of residents
SC	
ST	
General	
Total	

Data Source: Hostel register verified against fee receipts on record

5. Examination Results

(a) Examination results for [previous academic year] (undergraduate)											
		SC		ST		Other Reserved Categories		General		Total	
		M	F	M	F	M	F	M	F	M	F
1st year	Appeared	17	15	32	54	80	187	05	04	134	260
	1 st division	09	07	21	33	54	90	-	-	84	130
	2 nd Division	08	05	06	10	16	40	05	04	35	59
	3 rd Division	-	03	05	11	10	57	-	-	15	71
2nd year	Appeared	05	09	29	31	53	160	06	06	93	206
	1 st division	02	05	09	11	13	40	01	02	24	58
	2 nd Division	03	04	10	10	20	50	03	02	36	66
	3 rd Division	-	-	10	10	20	70	02	02	32	82
3rd year	Appeared	13	17	19	51	35	164	06	04	73	236
	1 st division	03	07	04	15	12	54	02	01	21	77
	2 nd Division	05	05	05	15	13	60	02	02	25	82
	3 rd Division	05	05	10	21	10	50	02	01	27	77

Data Source: AISHE, Examination results declared by [affiliating university/autonomous college]

(a) Examination results for [previous academic year] (postgraduate)											
		SC		ST		Other Reserved Categories		General		Total	
		M	F	M	F	M	F	M	F	M	F
1st year	Appeared	04	06	03	16	21	56	00	00	28	78
	1 st division	-	01	-	06	03	44	00	00	03	51
	2 nd Division	04	05	02	05	10	06	00	00	16	16
	3 rd Division	-	-	01	05	08	06	00	00	09	11
2nd	Appeared	00	03	04	09	04	06	01	00	09	18

year	1 st division	00	01	01	02	01	02	00	00	02	05
	2 nd Division	00	02	02	05	01	02	01	00	04	09
	3 rd Division	00	00	01	02	02	02	00	00	03	04

Data Source: AISHE, Examination results declared by [affiliating university/autonomous college]

6. Placement and student tracking

(a) Placement and Tracking of Students who graduated in [previous academic year] (Undergraduate)						
		Number of students who graduated in [the previous academic year] (*)	Of (*), the number of students who were successfully tracked and are:			
			Employed/ Self-employed	In education/ training	Unemployed	Not in the labour force
SC	Male					
	Female					
ST	Male					
	Female					
General	Male					
	Female					
Total	Male					
	Female					

Data Source: Records of the college placement cell

(b) Placement and Tracking of Students who graduated in [previous academic year] (Postgraduate)						
		Number of students who graduated in [the previous academic year] (*)	Of (*), the number of students who were successfully tracked and are:			
			Employed/ Self-employed	In education/ training	Unemployed	Not in the labour force
SC	Male					
	Female					
ST	Male					
	Female					
General	Male					
	Female					
Total	Male					
	Female					

Data Source: Records of the college placement cell

7. PhDs Awarded

Number of PhDs awarded between October 1 st [previous year] to September 30 th [current year]	
Discipline Group	Number
Arts	No
Commerce	
Criminology and Forensic Science	
Cultural Studies	
Defence Studies	
Design	
Disability Studies	
Education	
Fashion Technology	
Fine Arts	
Fisheries Science	
Foreign Languages	
Gandhian Studies	
Home Science	
Indian Languages	
IT & Computer	
Journalism and Mass Communication	
Law	
Library and Information Science	
Linguistics	
Management	
Marine Science and Oceanography	
Oriental Learning	
Physical Education	
Religious Studies	
Science	
Social Science	
Social Work	
Women Studies	
Literature	
Other	
All disciplines	

Data Source: AISHE

8. Research and consultancy

Revenue generated through externally funded research and consultancies over

[previous financial year]		
Discipline Group	Number of active projects	Total Revenue Generated (Rs. lakhs)
Arts	No	
Commerce		
Criminology and Forensic Science		
Cultural Studies		
Defence Studies		
Design		
Disability Studies		
Education		
Fashion Technology		
Fine Arts		
Fisheries Science		
Foreign Languages		
Gandhian Studies		
Home Science		
Indian Languages		
IT & Computer		
Journalism and Mass Communication		
Law		
Library and Information Science		
Linguistics		
Management		
Marine Science and Oceanography		
Oriental Learning		
Others / Inter-disciplinary		
Physical Education		
Religious Studies		
Science		
Social Science		
Social Work		
Veterinary and Animal Sciences		
Women Studies		
All disciplines		

Data Source: College/university records

Number of papers published in peer-reviewed journals between October 1 st [previous year] to September 30 th [current year]			
Discipline Group	Number of papers published		Number of published papers through cross-institute research collaboration
	International Journals	National Journals	
Arts			
Commerce			

Criminology and Forensic Science			
Cultural Studies			
Defence Studies			
Design			
Disability Studies			
Education			
Fashion Technology			
Fine Arts			
Fisheries Science			
Foreign Languages			
Gandhian Studies			
Home Science			
Indian Languages			
IT & Computer			
Journalism and Mass Communication			
Law			
Library and Information Science			
Linguistics			
Management			
Marine Science and Oceanography			
Oriental Learning			
Others / Inter-disciplinary			
Physical Education			
Religious Studies			
Science			
Social Science			
Social Work			
Women Studies			
All disciplines			

Date Source: College records based on published papers submitted by faculty

9. NAAC accreditation and UGC autonomy

	Date of Application (LOI & SSR submitted)	Date on which accreditation was received	Grade	Valid till
1 st Cycle				
2 nd Cycle				
3 rd Cycle				

Date of submission of the Annual Quality Assurance Report for the current year: 2017-18

Does the college have currently valid UGC autonomy? ___No_____. If yes, by order number _____, dated _____.

10. Institutional Trends

Variable	Baseline Value	[Year 1]	[Year 2]	[Year 3]	[Year 4]	Current Year
Percentage of sanctioned seats in the 1 st year filled (undergraduate, all categories)						
Percentage of sanctioned seats in the 1 st year filled (postgraduate, all categories)]		
Transition rate from the 1 st year to the 2 nd year (undergraduate, all categories)						
On-time graduation rate (undergraduate, all categories)						
Transition rate from the 1 st year to the 2 nd year (post graduate, all categories)						
On-time graduation rate (postgraduate, all categories)						
Regular faculty in position rate (all levels, reserved categories)						
Regular faculty in position rate (all levels, unreserved categories)						
Percentage of regular faculty with PhDs (all levels)						
Employment rate of graduates from the previous academic year (undergraduate, all categories)						
Employment rate of graduates from the previous academic year (postgraduate, all categories)						
Percentage of total revenue generated through externally funded research						
Number of papers published in peer-reviewed, international journals						

Source: Tables under section 1-8.

11. Financial Reports

Name and registration number of the auditor Mr. Kanhaya Sailwani seoni (CA)

Number of audit observations recorded by the auditor_05.

Number of audit responses found satisfactory, as certified by the project directorate_02

Certified audit reports as per the standard Chart of Accounts to be attached.

Audit is running

12. All India Survey of Higher Education

Date on which all applicable fields of the Data Collection Format for the All India Survey of Higher Education were completed and submitted 20/08/20185

Instructions

- All data is to be reported as on 30th September of the current year.
- Postgraduate courses refer to courses at the Masters and MPhil level.
- The number of sanctioned seats is the number of students the college is authorized, by the UGC/DHE/affiliating University, to admit in the first year of its degree programs.
- The number of sanctioned faculty posts is the number of faculty the college is authorized, by the UGC/DHE/affiliating University, to recruit on a full-time basis.
- Enrolment is defined as the number of students who have paid their admission fees for joining a degree program by September 30 of the respective academic year.
- Admission is defined as the number of students who have paid their admission fees for joining a degree program, in the first year, by September 30 of the respective academic year and who have never been enrolled in that degree program previously.
- Other Reserved Categories include all categories of students (for e.g. sports quota, extracurricular quota, residents of Jammu and Kashmir etc.) for whom a fixed percentage of sanctioned seats are reserved.
- Examination results are to be reported for examinations held in the previous academic year, and the results for which were declared by 30th September of the current year.
- Allowed to keep terms refers to students who did not pass all subjects in the previous year but were allowed to transition to the next year of their respective degree programs.
- Regular faculty refers to faculty employed on open-ended, full-time contracts as per UGC norms.
- Contract faculty refers to faculty employed on fixed term, full-time contracts as per UGC norms.
- Guest Lecturers refers to faculty employed on a per lecture or per day basis as per UGC norms.

- Data on scholarships is to be reported on all scholarships awarded between 1st October of the previous year and 30th September of the current year.
- A hostel seat is considered occupied if a student has been allotted a seat in the hostel and the student, to whom the seat was allotted, has paid the hostel fee for the current academic year.
- Examination results refers to the average score obtained by a student, in the respective academic year, across all exams that are used to assess whether the student has met the requirement of the degree program in which he/she is enrolled.
- Student tracking refers to having up to date contact information (mobile phone and/or email address) and status (employment, unemployed, in formal education or training, not in the labour market/other) for each student for up to six from the end of the academic year when the student passed out (graduated).
- Externally funded research and consultancies refer to research and/or development funded through consultancy contracts or partnerships with a sponsor or purchaser who is external to the institution.
- A peer-reviewed journal is one that subjects an author's research to review and evaluation by others who are experts in the same field, before the research is published.
- An international journal is one that has an International Standard Serial Number (ISSN) issued by the ISSN International Centre.
- A paper is said to be published through cross-institute research collaboration if the primary affiliation of at least two authors is to different colleges/institutions.
- The institutional performance indicators common across all institutions can be found in the PIP. Institution-specific performance indicators can be found in the MOU signed between the Institution and the Department of Higher Education.
- The standard Chart of Accounts refers to the standard format for audit reports as notified by the Department of Higher Education through its orders.