

**RAJMATA SCINDIA GOVT. PG GIRLS'
COLLEGE, CHHINDWARA (M.P.)**
{ACCREDITED By NAAC "B++" Dt. 23 January 2017}

ANNUAL REPORT
2017-2018

Submitted to

**DEPARTMENT OF HIGHER EDUCATION
BHOPAL (M.P.)**

**PRINCIPAL
DR. P.R. CHANDELKAR
R.S.G.PG.G.C.CWA.**

***RAJMATA SCINDIA GOVT. PG GIRLS'
COLLEGE, CHHINDWARA (M.P.)***

ANNUAL REPORT

YEAR - 2017-18

This format outlines the annual reports to be published by all colleges in the Madhya Pradesh on their websites, by October 31st of each year. Part I is intended as a guide and colleges are free to alter the contents and format as they see fit. Part II, the Appendix (Institutional Performance Data and Financial Reports), is mandatory and colleges are required to report all data as per the attached format and instructions.

Important Information –

- Name of the college - Rajmata Scindia Govt. PG Girls College Chhindwara
- Place of the college - Chhindwara
- District - Chhindwara
- Division – Jabalpur
- Year of establishment of college - **1982**
- Name of Principal – **Dr. P. R. Chandelkar**
Principal, R.S.Govt. PG Girls College, Chhindwara (M.P.)
- Mail id of Principal – hersggcchi@mp.gov.in, chandelkarpr2007@rediffmail.com
- Phone No. - 07162- 242118, 243065

Reporting In charge –

Dr. Smt. Kamna Varma, Professor Psychology,

Mail ID – kamna.varma@rediffmail.com

Phone – 9425855539

- Date of report submission - 20/08/2018

Part I

- 1. The Principal's Report** - Highlights the key activities, events, and successes of the past year and briefly describes major new initiatives to be undertaken over the next year.

I joined the institute on June 2015 and ever since then I did not look back and took up the journey of uplifting and upgrading the college at its academic and infrastructure level. Apart from the regular funds I was also able to generate funds from other sources and agencies to meet out the extra expenditure. I paved my way persistently to provide all sorts of amenities to the girl students flocking from the near by tribal area.

College avails e-governance and administration. WIFI campus, college under surveillance of CCTV camera, ramp, automated library, well equipped science labs, basket ball ground, modified gym, hostel with 100 seats, tally software in office, common room, clean toilets with adequate supply of water drainage and vending machines are some of our epithets.

Apart from the regular units NSS, NCC, Personality development cell, under my guidance a unit 'Seva Bane Swabhava' has been set up to inculcate the basic emotion 'Love' in the student. Love – that state of full functioning, glowing, relatedness - is the single great reward of living. The unit works on the below lines.

“I ošHokirqi q[ku% I ošI Urqfujke; k

I ošHokir.k i ' ; Urj ek dK'pr-nqk Hlx HoxAA**

“We are what we learn”.

Innovations in teaching and learning were introduced with a view to enhance the quality in education. 7 smart classes were introduced to make the teaching easy and less time consuming unlike the conventional chalk duster method.

I focus on new ideas, new ways of thinking of understanding different perspectives and not on merely reading and regurgitating the material but to think critically. I want the progress of college linked to progress of society leading to future generations and therefore I focus on upgrading the library, a vital sub unit which integrates itself with overall education. For a high tech learning environment, soul software, INFLIBNET, and e-resources were introduced yet I still have other advanced plans to be implemented in the near future as libraries have crucial role in the process of institutional accreditation.

Apart from substantial infrastructure and other amenities I want to create an atmosphere in the college where essentials of life are continually explored, felt and emphasized. It would be places in future where people come reconnect with their deepest selves, to re-experience their deepest feelings, to dissolve constricting patterns and to renew the kind of inner direction, vitality, joy and commitment that make life worth while.

New Initiatives taken by me –

- * To make higher education more relevant to social and economic needs.
- * To open PG classes in the adjacent building (Mathura Prasad) with good infrastructure.
- * To use higher education as the production of qualified human resources.
- * To promote quality and excellence in higher education
- * To introduce innovative methods of pedagogy and enhance collegiality on the campus.
- * To renovate, repair, and revamp the old building adjacent school handed over recently to us by the collector.
- * To ensure the adequacy, maintenance and functioning of the support structure.

Future key points –

- * To institutionalize good practices.
- * To enhance collegiality on the campus.
- * To introduce innovative methods of pedagogy.
- * To promote quality and excellence in Higher Education.
- * Making higher education more relevant to social and economic needs.
- * Higher Education as the production of qualified human resources.
- * To sustain quality in education
- * To give the institution a new sense of direction and identity.
- * Optimize and integrate the modern methods of teaching and learning.
- * Is focussing on as how to convert a learner into human capital.
- * Ensure the adequacy, maintenance and functioning of the support structure.

2. Overview

(i) Mission, Vision, and Objectives of the college

Mission :

- To develop creativity amongst the students through scholastic and non-scholastic programs
- To build a national character with multifaceted personality in order to ensure a healthy society
- To promote value based quality education and various skill based programs for developing a self-reliant woman.
- To develop a personality with mental and physical fitness by bringing out their inherent talents, and ensuring spiritual awareness in them.

Vision :

- To be recognized as a centre of excellence providing quality education and uplifting the status of women in society and converting them into human capital.

Objectives :

To impart education exclusively to the girl students and ensure holistic development to the less privileged section of the rural areas especially the tribal area including the SC, ST, OBC and General category.

A persistent commitment is observed to impart education to the increasing number of students each year. "Knowledge is power" as nothing is more sacred than the quotation with an aim to liberate the individual from the shackles of ignorance. We make a conscious effort to impart an education of head and heart to the learners' perseverance and to some extent of hand to the learners. We try to groom the students to evolve into responsible citizens and orient students to their social responsibilities through various co-curricular and extra-curricular forums such as NCC, NSS and Women cell, Sewa Bane Swabhava club, Psycho-Socio cell.

(ii) Brief introduction of the college (including the status (Govt./Lead/ Constituent/ Affiliated/Private), Parent University, UGC recognition, CPE status, etc), location & campus area

The college is situated in an aesthetic natural surrounding of Chhindwara known for its forest and Gond tribes and Gond culture. Some nature reformers and politicians brought into the existence of a co-ed college situated in our old building

with arts, science and commerce faculties. Later the arts and commerce faculties of this co-ed college were shifted to a newly constructed building on the hillock. Mean while a persistent and a long awaited demand of a separate college exclusively for girls resulted in the birth of this college, which is a milestone in the district today.

Since the genesis of this govt. college it had been affiliated to Dr. H. S. Gour University, Sagar till last year and there onwards it is in the process of its affiliation to Rani Durgawati University, Jabalpur. It is a UGC recognized institution.

(iii) History of the college with significant milestones

Established in the year 1982, this college was christened as Govt. Girls College with a few subjects as Political Sc, Home Sc., Economics, Sociology, Hindi, English in the Arts faculty with approx 164 students in the PG college building. With the increasing number of students over the years and the introduction of science and commerce faculty in 1984 and Home Science faculty the PG college building was handed over to this college permanently. Slowly and gradually the college metamorphosed into an institution which today offers teaching in 11 post graduate subjects and caters to the academic need of the girl students flocking from the SC, ST, OBC background in general. The college recently was renamed as Rajmata Scindia Govt. Girls PG College, Chhindwara, since it was conferred upon with PG status.

The college was accredited 'B' by the NAAC in 2006 and there after accredited B++ last year. It was certainly a journey towards progression in its options – a continuous journey towards excellence through innovative ideas and methodology. Since first accreditation there has been a constant gradual increase in number of students that the strength today is 4050. The college is solely focusing on the development of the infrastructure and is determined to an academic deliverance on the NAAC guidelines. Therefore, to an extent the college augments its resources through utilization of UGC grant, Govt. fund and Janbhagidari fund, Zilla Yojana.

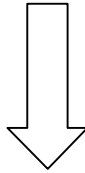
(iv) Faculties and major disciplines

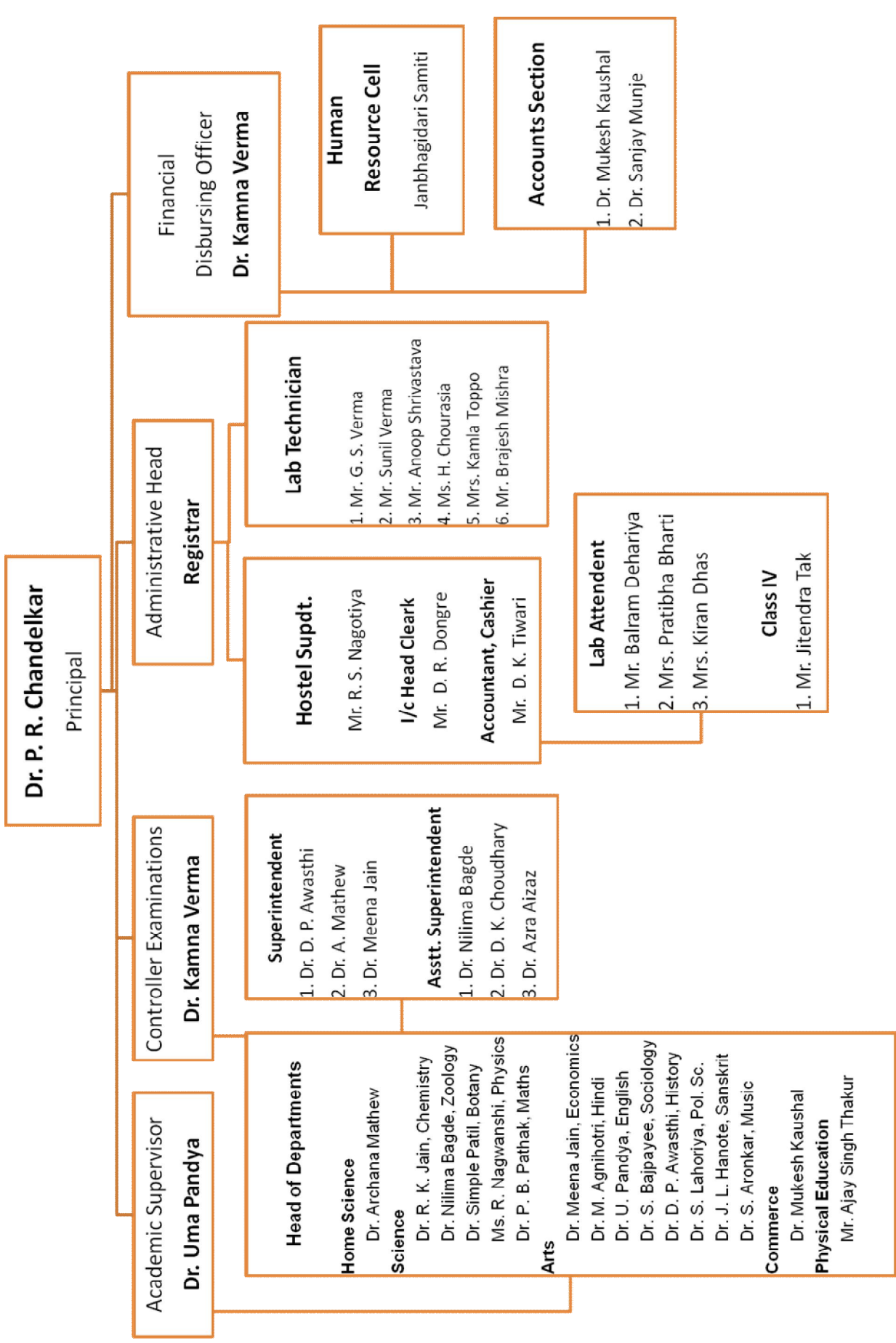
- Arts Faculty, P.G. in 16 Subjects.
- Science Faculty
- Commerce Faculty, P.G. in Management and Accounting
- Home Science Faculty, P.G. in Human Development and Food & Nutrition

3. Senior Management Team and Board of Governors

Lists the members of the senior management team (Principal, Registrar, Deans etc.) and members of the Board of Governors including their designations and professional backgrounds.

Administrative Hierarchy





4. Admission Statistics

- The number of applicants at the UG and PG level who ranked the college as their 1st, 2nd and 3rd preference, the number of applications received for PhD courses, and the number of students admitted at each level as per the following format.

Applications	UG	PG	PhD
Applications that ranked the college as the 1 st preference	3139	300	NA
Applications that ranked the college as the 2 nd preference	800	200	
Applications that ranked the college as the 3 rd preference	-	-	
Total number of applications received	3939	500	
Number of students admitted	3939	500	

Data Source: E-pravesh portal, records of the affiliating university

- A brief demographic profile of students admitted (in terms of gender, caste, whether from MP etc.)

Name of the Course	Gender	Category	% of students from the State	% of students from other states
B.A.	Female	All	100%	-
B.Sc.	Female	All	100%	-
B.COM.	Female	All	100%	-
B.H.Sc.	Female	All	100%	-
M.A.	Female	All	100%	-
M.Sc. (H.Sc.)	Female	All	100%	-
M.Sc.	Female	All	100%	-

5. Academic Programs: Core Programs - UG & PG

Core programs at UG level

Stream	Name of the Core Program	Eligibility	Optional subjects
Arts	Bachelor of Arts	10+2 from a recognized Board OR 10+2 with relevant vocational course from M.P. Board	Foundation course + a group of 3 optional subjects
Commerce	Bachelor of Commerce	10+2 from a recognized Board OR 10+2 with relevant vocational course from M.P. Board	Foundation course + a group of 3 subjects (2 Compulsory and 1 optional)

Science (Maths)	Bachelor of Science (Maths)	10+2 from a recognized Board OR 10+2 with relevant vocational course from M.P. Board	Foundation course + a group of 3 subjects (2 Compulsory and 1 optional)
Science (Bio)	Bachelor of Science (Bio)	10+2 from a recognized Board OR 10+2 with relevant vocational course from M.P. Board	Foundation course + a group of 3 subjects (2 Compulsory and 1 optional)
Home Science	Bachelor of Home Science	10+2 from a recognized Board OR 10+2 with relevant vocational course from M.P. Board	Foundation course + a group of 3 compulsory subjects

Core Options at PG level

Faculty	Name of the Core Program	Eligibility	Subject Options
Arts	Master of Arts	2 year Degree course in any faculty/ Honours degree course in same subject	English, Hindi, Sanskrit, Economics, History, Pol.Sc., Sociology, Psychology
Home Science	Master of Home Science	2 year Degree course in same subject	Food and Nutrition Human Development
Commerce	Master of Commerce	2 year Degree course in same subject	Management, Accounting
Science	Master of Science	2 year Degree course in same subject	Botany, Chemistry, Zoology, Maths, Physics

M.Phil/ Ph.D. Programs

S.No.	Subject	Eligibility	No. of scholars registered
NIL	NIL	NIL	NIL

**PG Diploma/ Diploma/ Certificate/ Self-financed/ Skill based Vocational/
Short term courses**

Name of the Course	Department	Duration	Fees	Seats
Computer Application	Computer	3 years	2000 Per Years	B.A. Computer - 460 B.Com Computer - 240 B.Sc. Computer - 430

6. Academic Calendar -

Academic Work	First Year/ Third/ Fifth Semester	Second/ Fourth/ Sixth Semester
Orientation Classes/Zero Classes/SWOT analysis	July	December
Teaching and Continuous Comprehensive Evaluation	Third week in September Last week in December	Second week in March
CCE Schedule	Schedule is decided by the Semester Cell	Schedule is decided by the Semester Cell
Preparation Leave	22 March to 29 March 02 November to 09 November (07 Days)	19 April to 21 April (03 Days)
Practical Exams (Graduation/Post Graduation)	Between 23 rd October to 09 th November	Between 02 nd April to 18 th April
Semester and ATKT Exams	May – June	November – December
Declaration of Examination Results	Up to university Within two months	Up to university Within two months
Semester Break (for students)	15 th December to 23 rd December	28 th May to 30 th June
Semester Break (for teachers)	15 th December to 23 rd December	28 th May to 15 th June

7. The Student Experience

Briefly describes student life in the college:

- Infrastructural facilities available to students - Classrooms, Smart classrooms, laboratories and equipment, Common Research Lab, Hostel; Canteen; Garden; Students common room, Auditorium, Sports Complex & other facilities

There exists a health cell which provides general check up randomly and counselling to the students from the physicians – 64% of students receive financial assistance from state govt., central govt. and other national agencies. Physical Education department houses a modified gym, basket ball ground and facilities for indoor games. Cross ventilated well lighted classrooms, ramp, canteen, 7 smart class rooms, well equipped laboratories, common room, pure clean drinking water, 36 toilets with 3 vending machines are some of the facilities availed by the students. Hostel with necessary amenities for 100 inmates runs yoga, meditation classes. Multipurpose hall serves as a common room for students. Garden with herbs, shrubs, ornamental plants and trees add to the ambience of the college. Students' poor at English language avail the facility of Digital Language lab.

- Library as a learning resource- advisory committee, its composition, facilities & services (e & print), annual improvement initiatives

The advisory committee of the library is headed by the librarian. Its composition involves usually senior teachers.

1. Dr. Uma Pandya
2. Dr. D. S. Akre
3. Dr. J.L. Hanote
4. Dr. Uma Pandya
5. Shri Vimal Singh Choudhary (in-charge library)
6. Ku. Rashmi Nagwanshi

- * Health magazines, employment news, journals and references are some of its features
- * OPAC, INFLIBNET
- * Book Bank and free stationary for SC/ST Students.
- * Area for browsing, reading room, soul software, computers with net facility, photocopier
- * E- Journals and E-Books
- * Class type newspapers

The advisory committee along with the head of the institution formulates policies for improvement considering the suggestions of the readers (both students & staff members).

- Student support services:

- ✓ IT enabled services

Library houses IT zone for accessing e-resources. The college has 85 number of systems with latest configurations LAN facility is available in computer application department, NRC and office. Printers and Scanners are connected with LAN. WIFI facility and software are available college aims at acquiring in computer departments. In future the institute is committed to provide stand alone facility.

- ✓ Financial assistance (scholarships/ schemes for SC/ST/OBC/ minority, Group & Health Insurance Schemes)

- Post metric scholarship for SC/ST/OBC students
- Gaon ki Beti
- Pratibha Kiran Yojana
- Grah Awas yojana
- Central Sector Scheme

- ✓ Personal enhancement & development schemes- NCC, NSS, Facilities for physically challenged & slow learners; Tutor-Guardian Scheme, Grievance Redressal Cell, Entrepreneurship Cell, Remedial classes, Career Guidance Cell.

Apart from NCC, NSS, Remedial Classes, Entrepreneurship Cell, Career Guidance Cell, Personality Development Cell, Environment Consciousness Cell. Sewa Bane Swabhava is persistently working towards the overall development of the individual.

*^Vli nhi ks Hko***

This cell initiates the habit of sharing, contentment, pity, compassion, human values and above all the internal self development. It helps build a stronger 'You' and helps the needy and the poor. The magnitude of work done is evidence of success. Ramp facility is present for physically challenged students. Remedial classes are run for slow and poor learners. Two boxes are fixed in the college campus for grievance redressal. Vivekanand Career Guidance Cell has organized Rojgar Mela, skill development programs in order to let the students stand on their feet.

- ✓ Extracurricular activities: Calendar of activities (Sports, Youth Festival, cultural and literary events), Achievements, Awards

The college ensures adequate availability of physical infrastructure and ensure its optimal utilization in effective teaching and learning and extra curricular activities.

Sports – Health club for physical fitness of students is equipped with motorized head mill, jogger, vibrator, twister, massager etc.

Youth Festival – Every year youth festival organized by the college at District level. Cultural events, involving dance, drama, singing, literary events like debate, essay writing, poetry writing, poem, parity, rangoli and many other activities take place during the annual functions.

Annual Function - Every end of the year annual function is organized for the students. This annual function spread over 3 days. The first day involves activities relating to arts and crafts. Literary event involves speech competition, recital, debate competition, essay writing competition, creative writing etc. Sports and games activities are organized on this very day and maximum participation of students is ensured. The 2nd day involves performing arts events, for ex. Dance, Drama, One Act Plays, Mimicry, and Skit. The last but not the least the third day is a celebration where prize distribution and At Home takes place.

- ✓ Major student welfare initiatives over the past year
 - Grievance cell, health care unit, red cross cell are actively working in the respective fields.
 - Physically Handicapped are benefited
 - Gaon ki Beti – scholarship/ Pratibha kiran Yojana
 - Remedial Coaching is provided to the students who are at risk of failure and drop out.
 - Post Metric Scholarship (SC, ST, OBC)
 - Sewa Bane Swabhava first in the institution is working towards welfare of the students. It helps student in remitting their fees, providing them with by cycles and uniforms to the under privileged.
 - Support and guidance provided to the students in preparing for the competitive exams.
 - Book bank and stationary scheme for SC, ST students
 - CM Helpline

- Extension Activities
 - All the more other academic departments too are active towards helping the poor and needy in the near by vicinity by donating them the needful
 - Camps are organized by NCC, NSS on the out skirts to create social, political and scientific awareness. Ex Swacchata Abhiyan, College Chalo Abhiyan, Beti Bachao Beti Padhao etc.
 - Health fare was organized last year for a free check up of the nearby community of the college.

8. Student Achievements

Highlights the most significant academic and non-academic achievements of students over the past year. This can include major academic awards and scholarships received student research, and sports and other extracurricular activities. Focusses, in particular, on profiling top achievers and describing how resources provided by the college helped these students succeed.

ACADEMIC

Internet facility is provided to the students in the library. Extra classes and referential material is arranged for them. Govt. has distributed mobile phones which inturn are used by the students to access knowledge. Physical Education department provides sports kit and free coaching in certain sports.

- Merit

S.no	Name of the award/ medal/ meritorious scholarship	Name of the recipient	Class	Area of achievement
1	Highest Percentage	Sapna Chouriya	MA IV	History
2	Highest Percentage	Parul Sahu	B.Com. VI	Commerce
3	Highest Percentage	Vaishali Dixit	M.A. IV	English Lit.
4	Highest Percentage	Radha Jian	M.Com IV	Commerce

- Research scholarship/ award

S.no	Name of the scholarship award/	Name of the recipient	Class	Area of research
-	-	-	-	-

CULTURAL

- Participation

S.no	Name of the event	District Level	State Level	University	National Level
1	Classical Solo/Group (Youth Festival)	1 st	-	-	-

- Awards and Achievements

Name of the student	Class	Event	Award/Achievement
Ku. Jayshree	BA I Year	National Thal Sena Camp, New Delhi	NCC Award
Heena Ali	BSc. (Maths) V Sem	National Integration Camp, Darjeeling	NCC Award
Nikita Choudhary	BSc. (Maths) V Sem	Republic day parade	Chhindwara

SPORTS

- Participation

S.no	Name of the event	Division Level	State Level	University/ National Level	International Level
1	Cricket	05	04	04	
2	Football	06	05	05	

3	Judo	02	01	01	
4	Kushti Wrestling	02	01	01	

- **Awards and Achievements**

Name of the student	Class	Sport	Award/Achievement
Ku. Savitri Dhurve	B.A. III	Judo	Gold Medal (State Level)
Ku. Poonam Varma	B.A. III	Judo	Gold Medal (State Level)

9. Research Activities

Identifies major research themes, places these themes in their social and economic context, highlights major research achievements (publications, collaborations, intellectual property produced, external funding received etc.), and profiles top researchers. Lays out the research agenda and identifies themes for the coming year.

- **Major research themes**

S. No.	Department	Prioritized research area and expertise	Social/ economic context
		NIL	

- **Major/Minor research projects**

S. No	Name of the Faculty	Year	Title of the project	Name of funding Agency/ Industry	Total grant received
			NIL		

- **Papers presented in regional, national and international seminars/ conferences**

S. No.	Name of the faculty	Regional/ State	National	International
1	Dr. Neelima Bagde	01	01	
2	Dr. Kamna Varma		01	01
3	Dr. Azra Aizaz		01	01
2	Dr. Dinesh Choudhary		01	01
3	Dr. Shripad Aronkar		01	01

Publication in National/International Journals

S.no.	Name of Faculty	Title of research publications in peer reviewed journals	Natio nal	Internat ional	Name of Journal and their impact factor of publication reported	ISSN/ISBN Number
1	Dr. Kamna Varma Asst. Prof., Psychology	Attitude of PG Student towards research	✓		Shodhoday Chhindwara	ISSN 2395-6321
2	Dr. Meena Jain, HOD Economics	Vashvik Bazaar va Bhartiya Arthvivastha	✓		Vaishvikrat Bharat	ISBN 098-81-933960-5-6
3	Dr. Sindhu Lahoriya HOD Political Sc.	Nyayik Sakriyatavaad PG	✓		Shodhoday Chhindwara	ISSN 2395-6321
4	Dr. Sindhu Lahoriya HOD Political Sc.	Vaishvikrat Bharat Samsamyik Vimarsh	✓		Shodhoday Chhindwara	ISSN 978-81-933960-5-6
5	Dr. Sindhu Lahoriya HOD Political Sc.	Adhunik Shiksha Pranali Aur Rojgaar	✓		Shodhoday Chhindwara	ISSN 978-93-84917-63-0
6	Dr. Neelima Bagde HOD Zoology	Environmental Impacts of Tourism Special	✓		Shodhoday Chhindwara	ISSN 2394-3580
7	Dr. Neelima Bagde HOD Zoology	Traditional and Ethno zoological Practices by Tribes	✓		Shodhoday Chhindwara	ISSN 2455-3301
8	Dr. Mithilesh Agnihotri HOD Hindi Lit.	Arthvyaastah Mein Gramin Udyami Mahilaon ki	✓		Shodhoday Chhindwara	ISSN 2320-8767

9	Dr. Mithilesh Agnihotri HOD Hindi Lit.	Hindi Mahila Lekhan Sarvekshan	✓		Shodhoday Chhindwara	2320-8767- EISSN-2394- 3793
10	Dr. Pratibha Shrivastav Professor, Home Sc.	Critical Analysis on Academic Stress	✓		Shodhoday Chhindwara	ISSN 2249-2054
11	Dr. Pratibha Shrivastav Professor, Home Sc.	An Exploratory Study of Challenges	✓		Shodhoday Chhindwara	ISSN 2456-2645
12	Dr. Usha Bharti HOD, Sanskrit	Twadiya Paad Pankajam Namami Devi Narmade	✓		Shodhoday Chhindwara	ISSN 2395-1516
13	Dr. Anita Kaushal Asst. Prof., Economics	Paryavarniya Samasyayein Evam Jain Dharma	✓		Shodhoday Chhindwara	ISSN 1395-6321
14	Dr. Shripad Aronkar HOD Music	Jain bhakta kavi bhagchand ji ki rachna	✓		Naveen Sodh Sansar Neemach	ISSN 2320-8767
15	Dr. Shripad Aronkar HOD Music	Sangeet Chikitsa ka Upyog	✓		Naveen Sodh Sansar Neemach	ISSN 2394-3793
16	Dr. Shripad Aronkar HOD Music	Rag Kafi me Jain Bhakt kavi Gyanat rai	✓		Shodhoday Chhindwara	ISSN 2395-6321
17	Dr. Azra Aijaz, Asst. Prof. Home Sc.	Vidyarthiyon ke mansik tanav ke karan evam rokhtham ke upay	✓		Shodhoday Chhindwara	ISSN 2456-2645
18	Dr. Azra Aijaz, Asst. Prof. Home Sc.	Academic Social Research (International Journal)		✓	An international research journal	ISSN 2456-2645
19	Dr. Bindiya Mahobiya] Asst. Prof. History	A Monthly Journal of Multidisciplinary Research	✓		Shodhoday Chhindwara	ISSN 2394-3580
20	Dr. Bindiya Mahobiya] Asst. Prof. History	Bhartiya samaj ka parivatit swaroop	✓		Shodhoday Chhindwara	ISSN 2395-6321
21	Dr. Bindiya Mahobiya] Asst. Prof. History	Varn Vyavastha ke Swaroop mein parivartan	✓		Shodhoday Chhindwara	ISSN 2395-6321
22	Dr. Dinesh Choudhary, Asst. Prof. Commerce	Prabandh me Karmachari sahyog evam vikas	✓		Shodhoday Chhindwara	ISSN 2395-6321
23	Dr. Dinesh Choudhary, Asst. Prof. Commerce	Aapda Prabandhan ek Vaicharik manthan	✓		Shodhoday Chhindwara	ISSN 2395-6321
24	Dr. Archana Mathew HOD, Home Science	Shishon ke gyan bhandaar par rangeen adhigam	✓		Global Journal	ISSN 2249-2054

		samagri ke prabhava ka adhyayan				
25	Dr. Archana Mathew HOD, Home Science	Effect of Nutrition and Health Education of Rural Mothers on Personal Hygiene Practices of Their Pre school Children of Jabalpur	✓		Academic Social Research	ISSN 2456-2645
26	Dr. Simpal Patil HOD, Botany	Physicochemical Analysis of Water Bodies of Chhindwara	✓		Life Science International Research	ISSN 2347-8691
27	Dr. Simpal Patil HOD, Botany	Seasonal Variations of Diatoms special Reference to Tembrature	✓		Shodhoday Chhindwara	ISSN 2395-6321
28	Dr. Simpal Patil HOD, Botany	Agriculture and Environmental Degradation	✓		Shodhoday Chhindwara	ISSN 2347-6321

- **List of linkages/ Collaborations/ MOUs**

- * Collaboration with World Bank (IDP) Project – 2017
- * Collaboration with NIIT Foundation – 2011
- * Collaboration with IL&FS Skill Development Corporation Ltd.
- * Collaboration with Infnibnet Centre – 2015.
- * Collaboration with FDDI & ATDC Centre – 2015.

- **College Publications: Research Journal, Magazine, Newsletter**

- College Magazine “Shreyas” is published every year enhancing the talent of writing among students.
- News letters is published online every three month.

10. Human Resources

Highlights senior faculty and administrative appointments. Describes what new areas of activity (new courses, research areas, extracurricular activities etc.) and administrative improvements are enabled by these appointments.

1. Faculty and Administrative appointments: Teaching and Non-teaching

Positions	Teaching Faculty				Non Teaching Faculty	Technical Staff
	Prof	Promoted Prof	Assistant Prof	Guest Faculty		
Sanctioned by UGC/ University/ State Govt -						
Sanction	01	-	08	10	06	12
Filled	04	10	08	10	03	06
Sanctioned by Management/ Janbhagidari Samiti/ Other authority	-	-	-	32	13	-
Filled	-	-	-	32 (JBS)	13 (JBS)	-

2. Guest Faculty: subject-wise appointments

S.no.	Name of the Guest Faculty	Qualification	Subject
1	Dr. Jitendra Jharbade	Ph.D., M.Sc.	Chemistry
2	Dr. Sarika Bansod	Ph.D., M.Sc.	Chemistry
3	Dr. Yogesh Ahirwar	Ph.D., M.A.	Economics
4	Dr. Sarita Khushwaha	Ph.D., M.A.	Hindi
5	Dr. Rajkumar Pahade	Ph.D., M.A.	Hindi
6	Dr. Sanket Kumar Chouksey	Ph.D., M.A.	History
7	Smt. Reena Malvi	M.Sc.	Home Science
8	Dr. Kavita Juneja	Ph.D., M.Sc.	Home Science
9	Dr. Akanksha Choudhary	Ph.D., M.Sc.	Home Science
10	Dr. Rameshwar Tiwari	Ph.D., M.Sc.	Physics
11	Dr. Vasudev Bhoyar	Ph.D., M.Sc.	Physics
12	Dr. Monika Soni	Ph.D., M.A.	Political Sc.
13	Dr. Umed Vishwakarma	Ph.D., M.A.	Political Sc.
14	Dr. Kanhaiya Prasad Sharma	Ph.D., M.A.	Sanskrit
15	Dr. Pallavika Arya	Ph.D., M.A.	Sociology
16	Smt. Neetika Napit	M.A. M.Lib.	Asst. Librarian
17	Smt. Tapasya Pandey	MSc./MCA	Comp. Appl.
18	Smt. Rupshikha Bhargav	Msc/MCA	Comp. Appl.
19	Smt. Ratnesh Dubey	MA Psychology	Psychology

20	Smt. Kavita Makode	MA Psychology	Psychology
21	Smt. Smita Aldak	MA Sanskrit	Sanskrit
22	Smt. Chhabinam Shrivastav	Ph.D	Hindi
23	Shri Sunil Barkhane	MA Sociology	Sociology
24	Smt. Rani Sahu	MA Sociology	Sociology
25	Ku. Anuradha Tamrakar	MSc. Zoology	Zoology
26	Smt. Nagma Nigar Khan	MSc. Chemistry	Chemistry
27	Ku. Ekta Chourasia	MA English	English
28	Ku. Kalpana Paradkar	MA English	English
29	Shri Mukesh Doudke	MCA	Comp. Appl.
30	Shri Ravi Pawar	MCA	Comp. Appl.
31	Smt. Payal Rai	M.Com/M.Phil	Commerce
32	Ku. Sanovar Haidri	MSc. Botany	Botany
33	Shri Ravindra Bansod	MA Sociology	Entrepreneurship
34	Ku. Rachna Kour Bhatti	MA English	English
35	Smt. Shweta Saxena	M.Ped	Judo
36	Shri Surendra Dole	MA Music	Music

3. Annual improvement in academic, research & administrative Initiatives

1. Exam results have been improved from the last year
2. Students are using e-resources to gather knowledge.
3. Teachers are promoted to write research papers and students are motivated to present papers.
4. Disciplined environment is introduced through strict administration.
5. Administrative initiatives are timely taken and observed strictly.
6. Annual improvement through refresher course, orientation course, workshop.

11. Events and Initiatives

Describes major events including seminars, conferences, competitions, student study trips etc. Focuses on what was achieved and learned, and how the college will follow up.

Describes significant academic, administrative, student support, fundraising, and other initiatives over the past year. The description of each initiative will be structured around the need for the initiative, how it was designed, what resources were used, what results were achieved, and which features of the initiative drove success.

1. National Seminar date 25 Feb. to 27 Feb. 2018 Conducted with the help of Commerce and Arts department title was (Women's Safety) on Self Financing schemes.
2. Commerce department took a study tour to FDDI
3. 2 seminars and 3 workshops were organized in Home Science Department.
4. Lectures on Environment Day, Women's Day were organized.
5. Fund was raised by the students who sold hand made candles, handicrafts, artefacts, at a fare in college.
6. Zoology department took an educational tour to Kanha national park.
7. Sociology department took MA students to museum and Jail (Prison)
8. A seminar on GST was organized
9. A seminar on Personality Development was organized
10. Bank coaching was arranged by Commerce Department
11. Spoken English workshop was conducting.
12. A visit to Mahindra Driving School was arranged.
13. Handloom factory and Hindustan Liver Ltd were visited by Home Science students.
14. Picnic was arranged at Tamia for its Geological importance.

12. Institutional Development plan

Describes the college's activities over the past year under different schemes, discusses performance against strategic/institutional development plans and commitments over the previous year.

Indicator*	Baseline Value	Target for [current year]	Value as on 30 th September [current year]
	Preparation of NAAC	To Introduce Solar Distillation plant	NAAC Accreditation done and got the grade B++
	Proposal of Seminars	To develop Water harvesting system	College got the status of PG College.
	Computer Tanning Programme & Internet Connection	To Conduct environmental awareness programme	
	Smart Classes	To develop 02 ramp for Physically challenged students	01 no. Ramp Constructed for Physically challenged students
	Renovation of		

	Building /Principal Chambers		Girls Hostel Facility Available for more students
	Reconstruction Girls Toilets		

Role of Internal Quality Assurance Cell (IQAC) in academic audit and initiating quality assurance strategies and processes

The task of IQAC is of quality assurance, planning and monitoring –

- * Academic audit is done by consolidating the feedback response from students, parents and stakeholders.
- * It promotes the use of technology to enhance teaching and learning
- * It introduces the various quality enhancing programs in compliance with the vision and mission of the college.
- * A strict check is exercised on the committees with responsible task.

13. Placement Report

Describes the college's placement cell activities, placement rate and salary statistics, and lists major employers and sectors of employment (disaggregated by gender and course studied). Profiles successful alumni and identifies emerging placement trends.

Activities of Placement Cell

S.no.	Name of the activity	Name of the Resource Person/ agency	Date & Duration
1	Employment Fare Rojgar Mela was organized on Ambedkar Jayanti Date 13&14 April 2016 13&14 April 2017	12 Companies took part. Aegis, Pantaloon, IFSL, Herbal Life, Om Mart, Sony Computers, Annie Engineering College, Yamaha Automobile, YS infotech, ATDC, Ambuja Skill Development, CII, MSIT, NIIT	13-04-2017
2	Training	TCS Mumbai/Lachnow Trainer – Rohit Singh	August – September 2016
3	MS Office, Tally, Competition Exams	NIIT Trainers TALLY Trainers	August and September 2016
4	Beauty Parlour, Rangoli	Local Trainers	January to March

	class, Personality Development Training, Cooking Class, Stitching Class		2017
--	---	--	------

Placement Details

S.no.	No. of Students Selected	List of employers/companies	Salary Package
1	03 students in TCS Drive 2016 Mumbai	TCS, Mumbai	Approx 15000/- per month
2	18 Students in Rojgar Mela on Ambedkar Jayanti	Sony Computers, IL&FS, OM Mart, NIIT etc.	Approx 6000/- per month

Alumni Profile

S.no.	Name of Alumni	Employment status	Name of the organisation
1	Nikita Saraiyya	Mahila Bal Vikas Kendra	Observer
2	Nidhi Patel	Clerk	Bank of India
3	Deepika Mohane	Running Boutique	
4	Abhilasha Soni	Dietician	NGO
5	Jyoti Pawar	Sanskrit Teacher	Central School
6	Suwarna Dikshit	Account Officer	Bank of Baroda
7	Meenakshi Dhare	Treasury officer	Bhopal
8	Divya Deshpandey	Asstt. Professor	Chhattisgarh (H.E.)
9	Kaberi Gupta	Counsellor	Australia
10	Sarla Sen	Asstt. Professor	Sagar (M.P.)
11	Alaina mansuri	Counsellor	Central School, Chhindwara
12	Kavita Baraskar	Lecturer	K.V.S. Chhindwara
13	Minakshi Dhahre	Treasury Officer	Bhopal
14	Reena Johre	Counsellor	Parasia, Chhindwara
15	Tulika Mukharji	Officer	DRDO
16	Farhat Mansuri	Guest Faculty	Bichhua College
17	Dr. Manisha Amte	Guest Faculty	Parasiya College
18	Pragya Jain	Asstt. Professor	Mumbai

19	Monika Lal	Asstt. Professor	Mumbai
20	Reeta Sarkar	Principal	Chhindwara
21	Ahilya Qureshi	Principal	Singhori
22	Pooja Bhargav	Teacher	Guraiya, Chhindwara
23	Nidhi Patel	Cashier	Bank of Maharashtra
24	Deepika saraiya	Observer	Chhindwara
25	Smita Aldak	Guest Faculty	Chhindwara
26	Ratna Vishwakarma	Guest Faculty	Chhindwara
27	Dr. Kavita Juneja	Guest Faculty	Chhindwara
28	Ekta Chourasiya	Guest Faculty	Chhindwara
29	Kalpna Paradkar	Guest Faculty	Chhindwara
30	Sarita Sahu	Asstt. Professor	Amarwara
31	Manita Choukse	Guest Faculty	Chhindwara
32	Meena Jain	Professor	Chhindwara
33	Anita Jain	Professor	Bhopal
34	Vijay Bindra	Professor	P.G.College, Chhindwara
35	Shilpa Sharma	Teacher	Umrana
36	Priyanka Patel	Bank Officer	Chhindwara
37	Ankita Kamle	Bank Officer	Linga
38	Anupama Vishwakarma	Music Teacher	Chhindwara
39	Shailja Dehariya	Kendriya Vidyalaya	Chhindwara
40	Payal Rai	Teacher	Chhindwara

14. Innovations and Best Practices

Academic Innovations –

- * Power point presentation, quizzes, classroom best assignments awards creating writing competition.
- * Uniform is introduced to make the best possible use of academic environment and to have a look-alike environment.
- * Excursions, field visits, are introduced for the active involvement of the student and a close interaction between the teacher and the student is ensured and cemented.
- * Smart Classes are in use for post graduate classes and other academic deliverance

Innovation in Administration –

- * All administrative work is computerized (use of software Tally)
- * Monitoring is done through CCTV cameras
- * CM helpline functional for online grievances.
- * Intercom facility for quick response
- * Time bound work is ensured and displayed
- * Information imparted to the staff through electronic devices

15. SWOC Analysis (strength , weaknesses, Opportunity and Challenges

Strength –

- The one and only Girls College in the Chhindwara District Chhindwara catering exclusively to the academic need of Girl students.
- Qualified Faculty
- Library housing 46000 books
- Considerably good infrastructure
- Active NCC unit representing at national level
- High tech gym
- The only Home Science faculty in the District
- Automation of account with Tally
- Automation of College Library
- Hostel facilities for 125 students
- Established Language Lab

Weakness –

- Lack of English Language teachers
- Lack of support staff
- Lack of play ground
- In ratio to the number of students shortage of regular faculty
- Less space in laboratories to accommodate the increasing number of students.
- The lack of absence of PG courses in Science faculty negatively affect the student progression
- The lack of research centre resulting in the lack of research facilities.
- No job oriented syllabus

Opportunities –

- Despite the lack of advance resources, the students hailing from the neighbouring areas aspire for Higher Education.

- The college provides various programs and activities under NSS, Personality Development Programs, Sports and Cultural activities.
- Vivekanand Career Counselling Cell and UGC career counselling Cell has provided skill development opportunities to the students to some extent.
- Focusing more on learner-centric classrooms for better implementation of the curriculum.
- Progression to advanced courses, particularly to girls

Challenges –

- Due to lack of professional/vocational courses the institution is facing challenges inviting companies for placement.
- In preparing students competent enough to face the global market scenario.
- The applied syllabus is not job oriented.
- A gap between the syllabus and a skills required by the companies.
- Getting more posts sanctioned from the government to cope with the growing number of students
- To sustain the interest of the students in general subjects.
- In increasing the participation of students in extra-curricular and co-curricular activities.
- In bringing up the attendance rate in classrooms.
- Admission to all the girl students resulting in increasing number of students each year

16. Looking Ahead Future Plans

Lays out the college’s priorities and goals over the coming year. Describes key initiatives planned, what each initiative is expected to achieve, and how it will contribute to the college’s long term development.

Key Initiatives Planned/ implemented

S. No	Head (administrative/ academic, etc)	Nature of proposal	Expected Outcome
1	Academic	To introduce Autonomy	Self dependent in examination
2	Academic	To introduce PG in all Science Subjects and modify science labs into high-tech labs	Most of the students will be inclined to research work

3	Academic	To introduce research center in all conventional subjects	To develop human capital
4	Academic	To start M.Phil. programs in different specialization of Arts, Commerce and Home Science	To develop human capital
5	Academic	To Start Job oriented courses under self financing scheme	Employment for girls students

17. Appendix: Institutional Performance Data and Financial Reports

Provides key data on the institution and its performance, including achievement against strategic plan targets and financial reports. This section is mandatory. All data fields must be completed, in the format and as per the instructions attached.

Part II

Appendix: Institutional Performance Data and Financial Reports

(all part II data kindly fill in attached excel sheet)

1. Sanctioned seats and enrolment

(a) Sanctioned Seats					
	SC	ST	Other Reserved Categories	General	Total
Undergraduate	690	780	2048	550	4068
Postgraduate	120	110	225	80	535
PhD					

Data Source: AISHE (2017-2018)

(b) Enrolment							
		Undergraduate			Postgraduate		PhD
		Year 1	Year 2	Year 3	Year 1	Year 2	
SC	Male						
	Female	256	247	164	69	48	NA
ST	Male						
	Female	339	261	182	49	39	NA
Other Reserved Categories	Male						
	Female	794	674	522	144	61	NA
General	Male						
	Female	181	183	129	50	29	NA
Total	Male						
	Female	1570	1365	997	312	185	NA

Data Source: AISHE

Number of sanctioned seats by discipline group and enrolment in the 1 st year as on September 30 th [current year]				
Discipline Group	Undergraduate		Postgraduate	
	Sanctioned Seats	Enrolment	Sanctioned Seats	Enrolment
Arts	720	718	320	167
Commerce	250	241	160	82
Home Science	80	31	20	05
Science	620	614	100	61

Data Source: AISHE

2. Transition and on-time graduation

(a) Transition from the 1 st year to the 2 nd year (Undergraduate)				
		Number of students admitted to the 1 st year in [the previous academic year] (*)	Of (*), the number of students currently enrolled in the 2 nd year who:	
			Passed all subjects in the 1 st year	Were Allowed to Keep Terms
SC	Male			
	Female	256	202	54
ST	Male			
	Female	339	298	41
Other Reserved Categories	Male			
	Female	794	698	96
General	Male			
	Female	181	161	20
Total	Male			
	Female	1570	1359	211

Data Source: AISHE, examination results declared by [affiliating university/autonomous college]

(a) Transition from the 1 st year to the 2 nd year (Postgraduate)				
		Number of students admitted to the 1 st year in [the previous academic year] (*)	Of (*), the number of students currently enrolled in the 2 nd year who:	
			Passed all subjects in the 1 st year	Were Allowed to Keep Terms
SC	Male			
	Female	69	50	19
ST	Male			
	Female	49	40	9
Other Reserved Categories	Male			
	Female	144	140	(04 Previous Student Admitted)*
General	Male			
	Female	50	34	16
Total	Male			
	Female	312	264	48*

Data Source: AISHE, examination results declared by [affiliating university/autonomous college]

(b) On-time graduation (Undergraduate)			
		Number of students admitted to the 1 st year in [year t-3] (*)	Of (*), the number of students who passed all final year examinations for the previous academic year
SC	Male	-	-
	Female	256	247
ST	Male	-	-
	Female	339	261
Other Reserved Categories	Male	-	-
	Female	794	674
General	Male	-	-
	Female	181	180
Total	Male	-	-
	Female	1570	1362

Data Source: AISHE, examination results declared by [affiliating university/autonomous college]

(b) On-time graduation (Postgraduate)			
		Number of students admitted to the 1 st year in [year t-2] (*)	Of (*), the number of students who passed all final year examinations in the current year
SC	Male	-	-
	Female	69	48
ST	Male	-	-
	Female	49	39
Other Reserved Categories	Male	-	-
	Female	144	69
General	Male	-	-
	Female	50	29
Total	Male	-	-
	Female	312	185

Data Source: AISHE, examination results declared by [affiliating university/autonomous college]

3. Faculty and administrative staff in position and training

(a) Faculty and administrative staff in position as on 30 th September, [current year]							
		Reserved					Un-reserved
		SC	ST	MP Residents	Females	Others OBC	
Assistant Professor	Sanctioned						
	Filled (Regular)	06	01	All	03	00	01
	Filled (Contract)	04	0	All	08	08	04
	Guest Lecturers	04	0	All	17	14	07
Associate Professor	Sanctioned						
	Filled (Regular)	01	01	N.A.	02	N.A.	03
	Filled (Contract)	N.A.	N.A.	N.A.	N.A.	N.A.	N.A.
	Guest Lecturers	N.A.	N.A.	N.A.	N.A.	N.A.	N.A.
Professor	Sanctioned						
	Filled (Regular)	-	01	All	11	00	04
	Filled (Contract)	-	-	-	-	-	-
	Guest Lecturers	-	-	-	-	-	-

Admin. Staff (all)	Sanctioned						
	Filled (Regular)	01	00	All	00	01	01
	Filled (Contract)	-	-	-	-	-	-
Accountant	Sanctioned						
	Filled (Regular)	0	0	0	0	0	01
	Filled (Contract)						

Data Source: AISHE

(b) Training of faculty and administrative staff between October 1 st [previous year] to September 30 th [current year]				
		Leadership and management training	Training in the area of academic specialisation	Other training
Assistant Professor	Number trained-20		Orientation course and refresher course	
	Avg. number of days		28 day and 21 day	
Associate Professor	Number trained		N/A	
	Avg. number of days		N/A	
Professor	Number trained-01		Orientation and refresher course	
	Avg. number of days		28 day and 21 day	
Administrative Staff (all)	Number trained-01		NA	
	Avg. number of days		NA	
Accountant	Number trained-01		Account training	
	Avg. number of days		90 day	

Data Source: Compiled from training certificates submitted by faculty/administrative staff

(c) Faculty qualifications as on 30 th September, [2017 Current Year]					
		PhD	Postgraduate	Undergraduate	Others
Assistant Professor	Regular	05	01	-	-
	Contract	-	-	-	-
	Guest Lecturers	16	18	-	-
Associate Professor	Regular	05	-	-	-
	Contract	-	-	-	-
	Guest Lecturers	-	-	-	-
Professor	Regular	15	-	-	-
	Contract	-	-	-	-
	Guest Lecturers	-	-	-	-

Data Source: AISHE

4. Student support services

(a) Financial support received (from all sources) by students in the college between October 1 st [previous year] to September 30 th [current year]							
		Undergraduate		Postgraduate		PhD	
		Number	Average Value (Rs.)	Number	Average Value (Rs.)	Number	Average Value (Rs.)
SC	Male	-	-	-	-	-	-
	Female	Each	8000	Each	10500	-	-
ST	Male	-	-	-	-	-	-
	Female	Each	8000	Each	10500	-	-
General	Male	-	-	-	-	-	-
	Female	Each	5900	Each	5900	-	-
Total	Male	-	-	-	-	-	-
	Female	-	-	-	-	-	-

Data Source: AISHE

(a) Financial support received, from the DHE, by students in the college between October 1 st [previous year] to September 30 th [current year]							
		Undergraduate		Postgraduate		PhD	
		Number	Average Value (Rs.)	Number	Average Value (Rs.)	Number	Average Value (Rs.)
SC	Male	-	-	-	-	-	-
	Female	711	5688000	NIL	NIL		
ST	Male	-	-	-	-	-	-
	Female	780	8796060	NIL	NIL		
General	Male	-	-	-	-	-	-
	Female	2207	1798296	NIL	NIL		
Total	Male	-	-	-	-	-	-
	Female	3698	16282356	NIL	NIL		

Data Source: College records, DHE

(b) Hostel occupancy as on 30 th September, [Current Year] (all hostels)		
<u>Capacity</u>		Number of residents
Males:		
SC	Male	NIL
	Female	59
ST	Male	NIL
	Female	41
General	Male	NIL
	Female	26
Total	Male	NIL
	Female	126

Data Source: Hostel register verified against fee receipts on record

(c) Hostel occupancy as on 30 th September, [Current Year] (girls only hostels opened after _____)	
<u>Capacity</u>	Number of residents
SC	31
ST	46
General	23
Total	100

Data Source: Hostel register verified against fee receipts on record

5. Examination Results

(a) Examination results for [previous academic year] (undergraduate)											
		SC		ST		Other Reserved Categories		General		Total	
		M	F	M	F	M	F	M	F	M	F
1 st year	Appeared	-	250	-	330	-	790	-	170	-	1540
	1 st Div	-	20	-	33	-	65	-	41	-	159
	2 nd Div	-	60	-	91	-	144	-	112	-	407
	3 rd Div	-	170	-	206	-	581	-	17	-	974
2 nd year	Appeared	-	240	-	253	-	670	-	165	-	1328
	1 st Div	-	24	-	10	-	44	-	37	-	115
	2 nd Div	-	98	-	143	-	255	-	278	-	774
	3 rd Div	-	118	-	100	-	371	-	150	-	739
3 rd year	Appeared	-	160	-	175	-	515	-	120	-	970
	1 st Div	-	20	-	23	-	59	-	55	-	157
	2 nd Div	-	60	-	73	-	150	-	50	-	333
	3 rd Div	-	80	-	79	-	306	-	15	-	480

Data Source: AISHE, Examination results declared by [affiliating university/autonomous college]

(a) Examination results for [previous academic year] (postgraduate)											
		SC		ST		Other Reserved Categories		General		Total	
		M	F	M	F	M	F	M	F	M	F
1 st year	Appeared		64		46		140		50		300
	1 st Div		25		25		35		10		95
	2 nd Div		20		20		25		20		85
	3 rd Div		19		1		80		20		120
2 nd year	Appeared		45		35		63		28		171
	1 st Div		15		14		20		8		57
	2 nd Div		20		10		21		7		58
	3 rd Div		10		11		22		13		56

Data Source: AISHE, Examination results declared by [affiliating university/autonomous college]

6. Placement and student tracking

(a) Placement and Tracking of Students who graduated in [previous academic year] (Undergraduate)						
		Number of students who graduated in [the previous academic year] (*)	Of (*), the number of students who were successfully tracked and are:			
			Employed / Self-employed	In education/ training	Unemployed	Not in the labour force
SC	Male	-	-	-	-	-
	Female	82	8	28	18	28
ST	Male					
	Female	78	10	15	21	32
General + OBC	Male	-				
	Female	620	57	202	120	241
Total	Male	-				
	Female	780	75	245	159	301

Data Source: Records of the college placement cell

(b) Placement and Tracking of Students who graduated in [previous academic year] (Postgraduate)						
		Number of students who graduated in [the previous academic year] (*)	Of (*), the number of students who were successfully tracked and are:			
			Employed/ Self-employed	In education/ training	Unemployed	Not in the labour force
SC	Male					
	Female	98	10	17	48	23
ST	Male					
	Female	90	7	23	36	24
Gen+ OBC	Male					
	Female	480	20	120	98	242
Total	Male	-				
	Female	668	37	160	182	289

Data Source: Records of the college placement cell

7. PhDs Awarded

Number of PhDs awarded between October 1 st [previous year] to September 30 th [current year]	
Discipline Group	Number
Arts	NIL
Commerce	
Criminology and Forensic Science	
Cultural Studies	
Defence Studies	
Design	
Disability Studies	
Education	
Fashion Technology	
Fine Arts	
Fisheries Science	
Foreign Languages	
Gandhian Studies	
Home Science	
Indian Languages	
IT & Computer	
Journalism and Mass Communication	
Law	
Library and Information Science	
Linguistics	
Management	
Marine Science and Oceanography	
Oriental Learning	
Physical Education	
Religious Studies	
Science	
Social Science	
Social Work	
Women Studies	
Literature	
Other	
All disciplines	

Data Source: AISHE

8. Research and consultancy

Revenue generated through externally funded research and consultancies over [previous financial year]		
Discipline Group	Number of active projects	Total Revenue Generated (Rs. lakhs)
Arts	NIL	NIL
Commerce		
Criminology and Forensic Science		
Cultural Studies		
Defence Studies		
Design		
Disability Studies		
Education		
Fashion Technology		
Fine Arts		
Fisheries Science		
Foreign Languages		
Gandhian Studies		
Home Science		
Indian Languages		
IT & Computer		
Journalism and Mass Communication		
Law		
Library and Information Science		
Linguistics		
Management		
Marine Science and Oceanography		
Oriental Learning		
Others / Inter-disciplinary		
Physical Education		
Religious Studies		
Science		
Social Science		
Social Work		
Veterinary and Animal Sciences		
Women Studies		
All disciplines		

Data Source: College/university records

Number of papers published in peer-reviewed journals between October 1 st [previous year] to September 30 th [current year]			
Discipline Group	Number of papers published		Number of published papers through cross-institute research collaboration
	International Journals	National Journals	
Arts	-	15	-
Commerce	-	02	-
Home Science	01	06	-
Physical Education	-	0	-
Science	-	05	-
All disciplines	-	-	

Date Source: College records based on published papers submitted by faculty

9. NAAC accreditation and UGC autonomy

	Date of Application (LOI & SSR submitted)	Date on which accreditation was received	Grade	Valid till
1st Cycle	2005	10/02/2005	B	10/02/2012
2nd Cycle	18/3/15 17/10/15	23/01/2017	B++	23/01/2022
3rd Cycle				

Date of submission of the Annual Quality Assurance Report for the current year:

AQAR for the current year has not been submitted as yet.

Does the college have currently valid UGC autonomy? **No**.

If yes, by order number _____, dated _____.

10. Institutional Trends

Variable	Baseline Value	Year 1	Year 2	Year 3	Year 4	Current Year
Percentage of sanctioned seats in the 1 st year filled (undergraduate, all categories)	1000	89%	74%	65%		
Percentage of sanctioned seats in the 1 st year filled (postgraduate, all categories)	400	78%	68%	NIL	NIL	
Transition rate from the 1 st year to the 2 nd year (undergraduate, all categories)			18%	14%	NIL	
On-time graduation rate (undergraduate, all categories)			19%	17%	NIL	
Transition rate from the 1 st year to the 2 nd year (post graduate, all categories)	400	77%	14%	NIL	NIL	
On-time graduation rate (postgraduate, all categories)			12%	NIL	NIL	
Regular faculty in position rate (all levels, reserved categories)	40+1(P RINCIP A]	SC-07(18%)	ST-4(10%)	OBC-0 (0%		
Regular faculty in position rate (all levels, unreserved categories)		GEN-19(48%)				
Percentage of regular faculty with PhDs (all levels)		99%				
Employment rate of graduates from the previous academic year (undergraduate, all categories)		0.0072%	0.0068%			
Employment rate of graduates from the previous academic year (postgraduate, all categories)		0.048%				
Percentage of total revenue generated through externally funded research		NIL				
Number of papers published in peer-reviewed, international journals		01				

11. Financial Reports

Name and registration number of the auditor :

SHRI RAJESH SAHU (REG. NO- 075618)

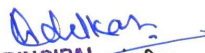
Number of audit observations recorded by the auditor **04**

Number of audit responses found satisfactory, as certified by the project directorate AGMP.

Certified audit reports as per the standard Chart of Accounts to be attached.

12. All India Survey of Higher Education

Date on which all applicable fields of the Data Collection Format for the All India Survey of Higher Education were completed and submitted - 20/08/2018


प्राचार्य कि. हस्तक्षेप एवं सील
Rajmata Scindia Govt. Girls
College Chhindwara (M.P.)
