

## Govt. College Bajag Distti. Dindori (M.P.)

### Annual Report 2017-18\_\_

This format outlines the annual reports to be published by all colleges in the Madhya Pradesh on their websites, by October 31<sup>st</sup> of each year. Part I is intended as a guide and colleges are free to alter the contents and format as they see fit. Part II, the Appendix (Institutional Performance Data and Financial Reports), is mandatory and colleges are required to report all data as per the attached format and instructions.

#### Important Information –

- Name of the college - **College: Govt. College Bajag, Distt.- Dindori MP**
- Place of the college – **Near B.E.O. Office Bajag , Distt.- Dindori MP**
- District - **Dindori MP**
- Division - **Jabalpur MP**
- Year of establishment of college - **1 Oct.2014**
- Name and Contact details ( Mail id , Phone ) of Principal - Dr. Prem Singh More, [principal.bajag@gmail.com](mailto:principal.bajag@gmail.com), 09406687228.
- Name , Post and Contact details of ( mail id, Phone no.) of Reporting In charge -- Dr. Prem Singh More, principal.bajag@gmail.com,09406687228.
- Date of report submission -07 Aug 2018

#### Part I

- 1. The Principal's Report (2 pages)-** Highlights the key activities, events, and successes of the past year and briefly describes major new initiatives to be undertaken over the next year.

Successes of the past year	Total Student	Pass Result of %
2016-17		
2016-17	63	80%

Other Activities Successes of the past year 2016-17 .

Other Activities	College Level	Distt. Level	State Level	Success
Sports	Nil	Nil	Nil	Nil
Oral Speech	14Stu.	03Nos.Stu.	Nil	02
Essay Competition	26	03	Nil	02
Personality Dev.Report Of Swami Vivekananda Carrier Guidance/Months	63	--	--	63

## 2. Overview (1 page)

(i) Vision, Mission and Objectives of the college

### *Vision*

**To create an environment for quality education so that in next 5 years 10-12 % of students are either employed/self-employed or join PG courses after graduation.**

### *Mission*

The following point will help to achieve the adequate mould to students mind:-

1. Provide quality education and skill based training to the students so that they become employable therefore may be effective to develop social consciousness among students to exploit their full potential. and worthy citizens of the country.
2. To increase the confidence of students so that they are ready to face the challenges of this competitive world.

(ii) Brief introduction of the college (including the status (Govt. / Lead/ Constituent/ Affiliated/ Private), Parent University, UGC recognition, CPE status, etc), location & campus area

- Name of the college - College: Govt. College Bajag, Distt.- Dindori (MP)
- college, location & campus area – Near B.E.O. Office Bajag , Distt.- Dindori (MP)

(iii) History of the college with significant milestones

Year of establishment of college - 1<sup>st</sup> Oct. 2014. 3 year ago in Tribal Area.

(iv) Faculties and major disciplines

Faculties- There are appointed Aathithi vidwan .Does not have regular faculties.

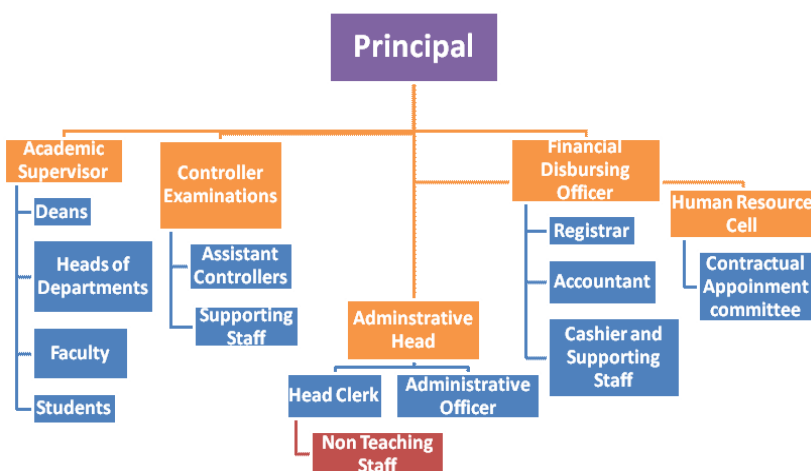
Major disciplines—should be clearly obeyed by Higher Education dptt.rules among faculties.

### 3. Senior Management Team and Board of Governors (1 page)

Lists the members of the senior management team (Principal, Registrar, Deans etc.) and members of the Board of Governors including their designations and professional backgrounds.

#### Administrative Hierarchy

For example -:



#### List of Chairperson/members of Statutory Bodies like Board of Governors/ Executive Committee/ Academic Council/ Janbhagidari Samiti, etc

### 4. Admission Statistics (1 page)

- The number of applicants at the UG and PG level who ranked the college as their 1<sup>st</sup>, 2<sup>nd</sup> and 3<sup>rd</sup> preference, the number of applications received for PhD courses, and the number of students admitted at each level as per the following format.

Applications	UG	PG	PhD
Applications that ranked the college as the 1 <sup>st</sup> preference	52	Nil	NA
Applications that ranked the college as the 2 <sup>nd</sup> preference	09	Nil	
Applications that ranked the college as the 3 <sup>rd</sup> preference	02	Nil	
Total number of applications received	63	Nil	
Number of students admitted	63	Nil	

Data Source: E-pravesh portal, records of the affiliating university

- A brief demographic profile of students admitted (in terms of gender, caste, whether from MP etc.)

Name of the Course	Gender		Category				% of students from the State	% of students from other states
	Mail	Femail	ST	SC	OBC	GEN		
B.A.	32	31	40	01	20	02	100%	NIL

## 5. Academic Programs: Core Programs - UG & PG

### Core programs at UG level

Stream	Name of the Core Program	Eligibility	Optional subjects
Arts	Bachelor of Arts	10+2 from a recognized Board OR 10+2 with relevant vocational course from M.P. Board	Foundation course + a group of 3 optional subjects
Nil	Nil	Nil	Nil
Nil	Nil	Nil	Nil
Nil	Nil	Nil	Nil

### Core Options at PG level

Faculty	Name of the Core Program	Eligibility	Subject Options
<i>E.g. Arts</i>	<i>Master of Arts</i>	<i>3 year Degree course in any faculty/ Honours degree course in same subject</i>	<i>No. of subjects</i>
	Nil	Nil	Nil
	Nil	Nil	Nil
	Nil	Nil	Nil

### M.Phil/ Ph.D. Programs

S.no.	Subject	Eligibility	No. of scholars registered
	Nil	Nil	Nil
	Nil	Nil	Nil
	Nil	Nil	Nil

**PG Diploma/ Diploma/ Certificate/ Self-financed/ Skill based Vocational/  
Short term courses**

<b>Name of the Course</b>	<b>Department</b>	<b>Duration</b>	<b>Fees</b>	<b>Seats</b>
Nil	Nil	Nil	Nil	Nil
Nil	Nil	Nil	Nil	Nil
Nil	Nil	Nil	Nil	Nil
Nil	Nil	Nil	Nil	Nil
Nil	Nil	Nil	Nil	Nil
Nil	Nil	Nil	Nil	Nil
Nil	Nil	Nil	Nil	Nil

**6. Academic Calendar 20 -**

<b>Academic Work</b>	<b>First/ Third/ Fifth Semester</b>	<b>Second/ Fourth/ Sixth Semester</b>
Orientation Classes/Zero Classes/SWOT analysis	Nil	Nil
Teaching and Continuous Comprehensive Evaluation	Nil	Nil
CCE Schedule	Nil	Nil
Preparation Leave	Nil	Nil
Practical Exams (Graduation/Post Graduation)	Nil	Nil
Semester and ATKT Exams	Nil	Nil
Declaration of Examination Results	Nil	Nil
Semester Break (for students)	Nil	Nil
Semester Break (for teachers)	Nil	Nil

**7. The Student Experience (4 pages)**

Briefly describes student life in the college:

- Infrastructural facilities available to students - Classrooms, Smart classrooms, laboratories and equipment, Common Research Lab, Hostel; Canteen; Garden; Students common room, Auditorium, Sports Complex & other facilities

This college Establishment on 1 oct.2014.ago 3yr. therefore dose not above.

Facilities, smart class rooms and other Facilities

- Library as a learning resource- advisory committee, its composition, facilities & services (e & print), annual improvement initiatives

Books and Magazines are provided to student from the library.

- Student support services:
  - ✓ IT enabled services

Nil

- ✓ Financial assistance ( scholarships/ schemes for SC/ST/OBC/ minority, Group & Health Insurance Schemes)

Gaon Ki Beti Yojna, Scholarship facilities, Smart phone Distribution, Stationary at Rs.2000 per Student per year. Free stationary for SC/ST students.

- ✓ Personal enhancement & development schemes- NCC, NSS, Facilities for physically challenged & slow learners; Tutor-Guardian Scheme, Grievance Redressal Cell, Entrepreneurship Cell, Remedial classes, Career Guidance Cell.

Nil

- ✓ Extracurricular activities: Calendar of activities (Sports, Youth Festival, cultural and literary events), Achievements, Awards

NIL

- ✓ Major student welfare initiatives over the past year

Nil

- Extension Activities

Nil

## 8. Student Achievements (5 pages)

Highlights the most significant academic and non-academic achievements of students over the past year. This can include major academic awards and scholarships received student research, and sports and other extracurricular activities. Focuses, in particular, on profiling top achievers and describing how resources provided by the college helped these students succeed.

### ACADEMIC

- Merit

S.no	Name of the award/ medal/ meritorious scholarship	Name of the recipient	Class	Area of achievement
	Nil	Nil	Nil	Nil
	Nil	Nil	Nil	Nil
	Nil	Nil	Nil	Nil
	Nil	Nil	Nil	Nil

- Research scholarship/ award

S.no	Name of the scholarship award/	Name of the recipient	Class	Area of research
	Nil	Nil	Nil	Nil
	Nil	Nil	Nil	Nil
	Nil	Nil	Nil	Nil

### CULTURAL

- Participation

S.no	Name of the event	District Level	State Level	University	National Level
	Nil	Nil	Nil	Nil	Nil
	Nil	Nil	Nil	Nil	Nil

- Awards and Achievements

Name of the student	Class	Event	Award/Achievement
Nil	Nil	Nil	Nil
Nil	Nil	Nil	Nil

### SPORTS

- Participation

S.no	Name of the event	Division Level	State Level	University/ National Level	International Level
	Nil	Nil	Nil	Nil	Nil
	Nil	Nil	Nil	Nil	Nil
	Nil	Nil	Nil	Nil	Nil

- **Awards and Achievements**

Name of the student	Class	Sport	Award/Achievement
Nil	Nil	Nil	Nil
Nil	Nil	Nil	Nil

### 9. Research Activities (4 pages)

Identifies major research themes, places these themes in their social and economic context, highlights major research achievements (publications, collaborations, intellectual property produced, external funding received etc.), and profiles top researchers. Lays out the research agenda and identifies themes for the coming year.

- **Major research themes**

S. No.	Department	Prioritized research area and expertise	Social/ economic context
	Nil	Nil	Nil
	Nil	Nil	Nil

- **Major/Minor research projects**

S. No	Name of the Faculty	Year	Title of the project	Name of funding Agency/ Industry	Total grant received
	Nil	Nil	Nil	Nil	Nil
	Nil	Nil	Nil	Nil	Nil

- **Papers presented in regional, national and international seminars/ conferences**

S. No.	Name of the faculty	Regional/ State	National	International
	Nil	Nil	Nil	Nil
	Nil	Nil	Nil	Nil
	Nil	Nil	Nil	Nil
	Nil	Nil	Nil	Nil

- **Publications in national/ international journals**

S.No.	Name of the faculty	Name of the journal	Title of the paper	ISSN/ ISBN number /Impact factor
	Nil	Nil	Nil	Nil
	Nil	Nil	Nil	Nil
	Nil	Nil	Nil	Nil

- **List of linkages/ Collaborations/ MOUs**

Nil
-----



- College Publications: Research Journal, Magazine, Newsletter

Nil
-----

## 10. Human Resources (2 pages)

Highlights senior faculty and administrative appointments. Describes what new areas of activity (new courses, research areas, extracurricular activities etc.) and administrative improvements are enabled by these appointments.

### 1. Faculty and Administrative appointments: Teaching and Non-teaching

Positions	Teaching Faculty				Non Teaching Faculty	Technical Staff
	Prof	Promoted Prof	Assistant Prof	Guest Faculty		
Sanctioned by UGC/ University/ State Govt						
<i>Filled</i>	-	-	01	05	02	08
Sanctioned by Management/ Janbhagidari Samiti/ Other authority	-	-	-	-	-	-
<i>Filled</i>						

### 2. Guest Faculty: subject-wise appointments

S.no.	Name of the Guest Faculty	Qualification	Subject
1	Mukesh Kumar Tiwari	NET,SET	Pol.Science
2	Bhawna Pawle	NET	Economics
3	Narendra Kumar Dogre	NET	Hindi
4	Anuradha Chourasia	NET	Sociology
5	Lalit Narayan Shahu	P.G	English
6	Arvind Dehriya	P.G	Sport
7	Sateesh Kumar Verma	P.G	Librarian

### 3. Annual improvement in academic, research & administrative Initiatives

Nil
-----

## 11. Events and Initiatives (5 pages)

Describes major events including seminars, conferences, competitions, student study trips etc. Focuses on what was achieved and learned, and how the college will follow up.

Describes significant academic, administrative, student support, fundraising, and other initiatives over the past year. The description of each initiative will be structured around the

need for the initiative, how it was designed, what resources were used, what results were achieved, and which features of the initiative drove success.

Nil
-----

### 12. Institutional Development plan (4 pages)

Describes the college's activities over the past year under different schemes, discusses performance against strategic/institutional development plans and commitments over the previous year.

Indicator*	Baseline Value	Target for [current year]	Value as on 30 <sup>th</sup> September [current year]
Nil	Nil	Nil	Nil
Nil	Nil	Nil	Nil
Nil	Nil	Nil	Nil
Nil	Nil	Nil	Nil
Nil	Nil	Nil	Nil

### Role of Internal Quality Assurance Cell (IQAC) in academic audit and initiating quality assurance strategies and processes

Nil
-----

### 13. Placement Report (3 pages)

Describes the college's placement cell activities, placement rate and salary statistics, and lists major employers and sectors of employment (disaggregated by gender and course studied). Profiles successful alumni and identifies emerging placement trends.

#### Activities of Placement Cell

S.no.	Name of the activity	Name of the Resource Person/ agency	Date & Duration
	Nil	Nil	Nil
	Nil	Nil	Nil
	Nil	Nil	Nil
	Nil	Nil	Nil

#### Placement Details

S.no.	No. of Students Selected	List of employers/companies	Salary Package
	Nil	Nil	Nil
	Nil	Nil	Nil
	Nil	Nil	Nil
	Nil	Nil	Nil

### Alumni Profile

S.no.	Name of Alumni	Employment status	Name of the organisation
	Nil	Nil	Nil
	Nil	Nil	Nil
	Nil	Nil	Nil
	Nil	Nil	Nil

### 14. Innovations and Best Practices

Nil
-----

### 15. SWOC Analysis (strength , weaknesses, Opportunity and Challenges

Strength- Sufficient and good faculties. Weakness- Lack of College buildings, long distance from district place. Opportunity- Science and Post Graduation Courses should be open. Challenge- long distance from lead college and district head quarter.
--

### 16. Looking Ahead (3 pages) Future Plans

Lays out the college's priorities and goals over the coming year. Describes key initiatives planned, what each initiative is expected to achieve, and how it will contribute to the college's long term development.

#### Key Initiatives Planned/ implemented

S. No	Head (administrative/ academic, etc)	Nature of proposal	Expected Outcome
-	Nil	Nil	Nil
-	Nil	Nil	Nil
-	Nil	Nil	Nil
-	Nil	Nil	Nil

### 17. Appendix: Institutional Performance Data and Financial Reports

Provides key data on the institution and its performance, including achievement against strategic plan targets and financial reports. This section is mandatory. All data fields must be completed, in the format and as per the instructions attached.

## Part II

Appendix: Institutional Performance Data and Financial Reports (all part II data kindly fill in attached excel sheet )

### 1. Sanctioned seats and enrolment

<b>(a) Sanctioned Seats</b>					
	<b>SC</b>	<b>ST</b>	<b>Other Reserved Categories</b>	<b>General</b>	<b>Total</b>
<b>Undergraduate</b>	01	40	20	02	63
<b>Postgraduate</b>	Nil	Nil	Nil	Nil	Nil
<b>PhD</b>	Nil	Nil	Nil	Nil	Nil

Data Source: AISHE

<b>(b) Enrolment</b>							
		<b>Undergraduate</b>			<b>Postgraduate</b>		<b>PhD</b>
		<b>Year 1</b>	<b>Year 2</b>	<b>Year 3</b>	<b>Year 1</b>	<b>Year 2</b>	
<b>SC</b>	Male	-	-	-	-	-	-
	Female	-	01	--	-	-	-
<b>ST</b>	Male	11	07	05	-	-	-
	Female	11	06	-	-	-	-
<b>Other Reserved Categories</b>	Male	03	02	03	-	-	-
	Female	04	05	03	-	-	-
<b>General</b>	Male	01	-	-	-	-	-
	Female	01	-	-	-	-	-
<b>Total</b>	Male	15	09	08	-	-	-
	Female	16	12	03	-	-	-

Data Source: AISHE

<b>Number of sanctioned seats by discipline group and enrolment in the 1<sup>st</sup> year as on September 30<sup>th</sup> [current year]</b>				
<b>Discipline Group</b>	<b>Undergraduate</b>		<b>Postgraduate</b>	
	<b>Sanctioned Seats</b>	<b>Enrolment</b>	<b>Sanctioned Seats</b>	<b>Enrolment</b>
Agriculture	-	-	-	-
Arts	180	63	-	-
Commerce	-	-	-	-
Criminology and Forensic Science	-	-	-	-
Cultural Studies	-	-	-	-
Defence Studies	-	-	-	-
Design	-	-	-	-
Disability Studies	-	-	-	-
Education	-	-	-	-
Fashion Technology	-	-	-	-

Fine Arts	-	-	-	-
Fisheries Science	-	-	-	-
Foreign Languages	-	-	-	-
Gandhian Studies	-	-	-	-
Home Science	-	-	-	-
Indian Languages	-	-	-	-
IT & Computer	-	-	-	-
Journalism and Mass Communication	-	-	-	-
Law	-	-	-	-
Library and Information Science	-	-	-	-
Linguistics	-	-	-	-
Management	-	-	-	-
Marine Science and Oceanography	-	-	-	-
Oriental Learning	-	-	-	-
Physical Education	-	-	-	-
Religious Studies	-	-	-	-
Science	-	-	-	-
Social Science	-	-	-	-
Social Work	-	-	-	-
Women Studies	-	-	-	-

Data Source: AISHE

## 2. Transition and on-time graduation

<b>(a) Transition from the 1<sup>st</sup> year to the 2<sup>nd</sup> year (Undergraduate)</b>				
		<b>Number of students admitted to the 1<sup>st</sup> year in [the previous academic year] (*)</b>	<b>Of (*), the number of students currently enrolled in the 2<sup>nd</sup> year who:</b>	
			<b>Passed all subjects in the 1<sup>st</sup> year</b>	<b>Were Allowed to Keep Terms</b>
<b>SC</b>	Male	-	-	-
	Female	01	01	-
<b>ST</b>	Male	07	07	04
	Female	03	06	01
<b>Other Reserved Categories</b>	Male	09	02	05
	Female	04	06	-
<b>General</b>	Male	-	-	-
	Female	-	-	-
<b>Total</b>	Male	10	09	09
	Female	14	12	01

Data Source: AISHE, examination results declared by [affiliating university/autonomous college]

<b>(a) Transition from the 1<sup>st</sup> year to the 2<sup>nd</sup> year (Postgraduate)</b>				
		Number of students admitted to the 1 <sup>st</sup> year in [the previous academic year] (*)	Of (*), the number of students currently enrolled in the 2 <sup>nd</sup> year who:	
			Passed all subjects in the 1 <sup>st</sup> year	Were Allowed to Keep Terms
SC	Male	-	-	-
	Female	-	-	-
ST	Male	-	-	-
	Female	-	-	-
Other Reserved Categories	Male	-	-	-
	Female	-	-	-
General	Male	-	-	-
	Female	-	-	-
Total	Male	-	-	-
	Female	-	-	-

Data Source: AISHE, examination results declared by [affiliating university/autonomous college]

<b>(b) On-time graduation (Undergraduate)</b>			
		Number of students admitted to the 1 <sup>st</sup> year in [year t-3] (*)	Of (*), the number of students who passed all final year examinations for the previous academic year
SC	Male	-	-
	Female	01	-
ST	Male	12	-
	Female	06	-
Other Reserved Categories	Male	05	-
	Female	08	-
General	Male	-	-
	Female	-	-
Total	Male	17	-
	Female	15	-

Data Source: AISHE, examination results declared by [affiliating university/autonomous college]

<b>(b) On-time graduation (Postgraduate)</b>
--

		Number of students admitted to the 1 <sup>st</sup> year in [year t-2] (*)	Of (*), the number of students who passed all final year examinations in the current year
SC	Male	-	-
	Female	-	-
ST	Male	-	-
	Female	-	-
Other Reserved Categories	Male	-	-
	Female	-	-
General	Male	-	-
	Female	-	-
Total	Male	-	-
	Female	-	-

Data Source: AISHE, examination results declared by [affiliating university/autonomous college]

### 3. Faculty and administrative staff in position and training

<b>(a) Faculty and administrative staff in position as on 30<sup>th</sup> September, [current year]</b>							
		Reserved					Unreserved
		SC	ST	MP Residents	Females	Others	
Assistant Professor	Sanctioned	-	-	-	-	-	-
	Filled (Regular)	-	01	01	-	-	-
	Filled (Contract)	-	-	-	-	-	-
	Guest Lecturers	01	-	05	02	02	02
Associate Professor	Sanctioned	-	-	-	-	-	-
	Filled (Regular)	-	-	-	-	-	-
	Filled (Contract)	-	-	-	-	-	-
	Guest Lecturers	-	-	-	-	-	-
Professor	Sanctioned	-	-	-	-	-	-
	Filled (Regular)	-	-	-	-	-	-
	Filled (Contract)	-	-	-	-	-	-
	Guest Lecturers	-	-	-	-	-	-
Admin. Staff (all)	Sanctioned	-	-	-	-	-	-
	Filled (Regular)	-	01	02	-	-	01
	Filled	01	-	02	-	01	-

	(Contract)						
<b>Accountant</b>	Sanctioned	-	-	-	-	-	-
	Filled (Regular)	-	-	-	-	-	-
	Filled (Contract)	-	-	-	-	-	-

Data Source: AISHE

<b>(b) Training of faculty and administrative staff between October 1<sup>st</sup> [previous year] to September 30<sup>th</sup> [current year]</b>				
		<b>Leadership and management training</b>	<b>Training in the area of academic specialisation</b>	<b>Other training</b>
<b>Assistant Professor</b>	Number trained	-	-	-
	Avg. number of days	-	-	-
<b>Associate Professor</b>	Number trained	-	-	-
	Avg. number of days	-	-	-
<b>Professor</b>	Number trained	-	-	-
	Avg. number of days	-	-	-
<b>Administrative Staff (all)</b>	Number trained	-	-	-
	Avg. number of days	-	-	-
<b>Accountant</b>	Number trained	-	-	-
	Avg. number of days	-	-	-

Data Source: Compiled from training certificates submitted by faculty/administrative staff

<b>(c) Faculty qualifications as on 30<sup>th</sup> September, [Current Year]</b>					
		<b>PhD</b>	<b>Postgraduate</b>	<b>Undergraduate</b>	<b>Others</b>
<b>Assistant Professor</b>	Regular	-	01	-	SLET
	Contract	-	-	-	-
	Guest Lecturers	-	05	-	NET-04
<b>Associate Professor</b>	Regular	-	-	-	-
	Contract	-	-	-	-
	Guest Lecturers	-	-	-	-
<b>Professor</b>	Regular	-	-	-	-
	Contract	-	-	-	-
	Guest Lecturers	-	-	-	-

Data Source: AISHE

#### 4. Student support services



<b>(a) Financial support received (from all sources) by students in the college between October 1<sup>st</sup> [previous year] to September 30<sup>th</sup> [current year]</b>							
		Undergraduate		Postgraduate		PhD	
		Number	Average Value (Rs.)	Number	Average Value (Rs.)	Number	Average Value (Rs.)
SC	Male	-	-	-	-	-	-
	Female	-	-	-	-	-	-
ST	Male	-	-	-	-	-	-
	Female	-	-	-	-	-	-
General	Male	-	-	-	-	-	-
	Female	-	-	-	-	-	-
Total	Male	-	-	-	-	-	-
	Female	-	-	-	-	-	-

Data Source: AISHE

<b>(a) Financial support received, from the DHE, by students in the college between October 1<sup>st</sup> [previous year] to September 30<sup>th</sup> [current year]</b>							
		Undergraduate		Postgraduate		PhD	
		Number	Average Value (Rs.)	Number	Average Value (Rs.)	Number	Average Value (Rs.)
SC	Male	-	-	-	-	-	-
	Female	-	-	-	-	-	-
ST	Male	-	-	-	-	-	-
	Female	-	-	-	-	-	-
General	Male	-	-	-	-	-	-
	Female	-	-	-	-	-	-
Total	Male	-	-	-	-	-	-
	Female	-	-	-	-	-	-

Data Source: College records, DHE

<b>(b) Hostel occupancy as on 30<sup>th</sup> September, [Current Year] (all hostels)</b>		
<b>Capacity</b>		<b>Number of residents</b>
<b>Males:</b>		
SC	Male	-
	Female	-
ST	Male	-
	Female	-
General	Male	-
	Female	-
Total	Male	-
	Female	-

Data Source: Hostel register verified against fee receipts on record

<b>(c) Hostel occupancy as on 30<sup>th</sup> September, [Current Year]</b> <b>(girls only hostels opened after _____)</b>
---



	Division										
<b>2<sup>nd</sup> year</b>	Appeared	-	-	-	-	-	-	-	-	-	-
	1 <sup>st</sup> division	-	-	-	-	-	-	-	-	-	-
	2 <sup>nd</sup> Division	-	-	-	-	-	-	-	-	-	-
	3 <sup>rd</sup> Division	-	-	-	-	-	-	-	-	-	-

Data Source: AISHE, Examination results declared by [affiliating university/autonomous college]

#### 6. Placement and student tracking

<b>(a) Placement and Tracking of Students who graduated in [previous academic year] (Undergraduate)</b>						
		Number of students who graduated in [the previous academic year] (*)	Of (*), the number of students who were successfully tracked and are:			
			Employed/ Self-employed	In education/ training	Unemployed	Not in the labour force
<b>SC</b>	Male	-	-	-	-	-
	Female	-	-	-	-	-
<b>ST</b>	Male	-	-	-	-	-
	Female	-	-	-	-	-
<b>General</b>	Male	-	-	-	-	-
	Female	-	-	-	-	-
<b>Total</b>	Male	-	-	-	-	-
	Female	-	-	-	-	-

Data Source: Records of the college placement cell

<b>(b) Placement and Tracking of Students who graduated in [previous academic year] (Postgraduate)</b>						
		Number of students who graduated in [the previous academic year] (*)	Of (*), the number of students who were successfully tracked and are:			
			Employed/ Self-employed	In education/ training	Unemployed	Not in the labour force
<b>SC</b>	Male	-	-	-	-	-
	Female	-	-	-	-	-
<b>ST</b>	Male	-	-	-	-	-
	Female	-	-	-	-	-

<b>General</b>	Male	-	-	-	-	-
	Female	-	-	-	-	-
<b>Total</b>	Male	-	-	-	-	-
	Female	-	-	-	-	-

Data Source: Records of the college placement cell

7. PhDs Awarded

<b>Number of PhDs awarded between October 1<sup>st</sup> [previous year] to September 30<sup>th</sup> [current year]</b>	
<b>Discipline Group</b>	<b>Number</b>
Arts	-
Commerce	-
Criminology and Forensic Science	-
Cultural Studies	-
Defence Studies	-
Design	-
Disability Studies	-
Education	-
Fashion Technology	-
Fine Arts	-
Fisheries Science	-
Foreign Languages	-
Gandhian Studies	-
Home Science	-
Indian Languages	-
IT & Computer	-
Journalism and Mass Communication	-
Law	-
Library and Information Science	-
Linguistics	-
Management	-
Marine Science and Oceanography	-
Oriental Learning	-
Physical Education	-
Religious Studies	-
Science	-
Social Science	-
Social Work	-
Women Studies	-
Literature	-
Other	-
<b>All disciplines</b>	-

Data Source: AISHE

8. Research and consultancy

<b>Revenue generated through externally funded research and consultancies over [previous financial year]</b>		
<b>Discipline Group</b>	<b>Number of active projects</b>	<b>Total Revenue Generated (Rs. lakhs)</b>
Arts	-	-
Commerce	-	-
Criminology and Forensic Science	-	-
Cultural Studies	-	-
Defence Studies	-	-
Design	-	-
Disability Studies	-	-
Education	-	-
Fashion Technology	-	-
Fine Arts	-	-
Fisheries Science	-	-
Foreign Languages	-	-
Gandhian Studies	-	-
Home Science	-	-
Indian Languages	-	-
IT & Computer	-	-
Journalism and Mass Communication	-	-
Law	-	-
Library and Information Science	-	-
Linguistics	-	-
Management	-	-
Marine Science and Oceanography	-	-
Oriental Learning	-	-
Others / Inter-disciplinary	-	-
Physical Education	-	-
Religious Studies	-	-
Science	-	-
Social Science	-	-
Social Work	-	-
Veterinary and Animal Sciences	-	-
Women Studies	-	-
<b>All disciplines</b>	-	-

Data Source: College/university records

<b>Number of papers published in peer-reviewed journals between October 1<sup>st</sup> [previous year] to September 30<sup>th</sup> [current year]</b>
--

Discipline Group	Number of papers published		Number of published papers through cross-institute research collaboration
	International Journals	National Journals	
Arts	-	-	-
Commerce	-	02	-
Criminology and Forensic Science	-	-	-
Cultural Studies	-	-	-
Defence Studies	-	-	-
Design	-	-	-
Disability Studies	-	-	-
Education	-	-	-
Fashion Technology	-	-	-
Fine Arts	-	-	-
Fisheries Science	-	-	-
Foreign Languages	-	-	-
Gandhian Studies	-	-	-
Home Science	-	-	-
Indian Languages	-	-	-
IT & Computer	-	-	-
Journalism and Mass Communication	-	-	-
Law	-	-	-
Library and Information Science	-	-	-
Linguistics	-	-	-
Management	-	-	-
Marine Science and Oceanography	-	-	-
Oriental Learning	-	-	-
Others / Inter-disciplinary	-	-	-
Physical Education	-	-	-
Religious Studies	-	-	-
Science	-	-	-
Social Science	-	-	-
Social Work	-	-	-
Women Studies	-	-	-
<b>All disciplines</b>	-	-	-

Date Source: College records based on published papers submitted by faculty

## 9. NAAC accreditation and UGC autonomy

	Date of Application (LOI & SSR submitted)	Date on which accreditation was received	Grade	Valid till
1 <sup>st</sup> Cycle	-	-	-	-
2 <sup>nd</sup> Cycle	-	-	-	-
3 <sup>rd</sup> Cycle	-	-	-	-

Date of submission of the Annual Quality Assurance Report for the current year: \_\_\_Nil\_\_\_\_\_.

Does the college have currently valid UGC autonomy? \_\_\_\_\_Nil\_\_\_\_\_. If yes, by order number \_\_\_\_\_Nil\_\_\_\_\_, dated \_\_\_\_\_Nil\_\_\_\_\_.

#### 10. Institutional Trends

Variable	Baseline Value	[Year 1]	[Year 2]	[Year 3]	[Year 4]	Current Year
Percentage of sanctioned seats in the 1 <sup>st</sup> year filled (undergraduate, all categories)	-	24	17	-	-	-
Percentage of sanctioned seats in the 1 <sup>st</sup> year filled (postgraduate, all categories)	-	-	-	-	-	-
Transition rate from the 1 <sup>st</sup> year to the 2 <sup>nd</sup> year (undergraduate, all categories)	-	-	-	-	-	-
On-time graduation rate (undergraduate, all categories)	-	-	-	-	-	-
Transition rate from the 1 <sup>st</sup> year to the 2 <sup>nd</sup> year (post graduate, all categories)	-	-	-	-	-	-
On-time graduation rate (postgraduate, all categories)	-	-	-	-	-	-
Regular faculty in position rate (all levels, reserved categories)	-	-	-	-	-	-
Regular faculty in position rate (all levels, unreserved categories)	-	-	-	-	-	-
Percentage of regular faculty with PhDs (all levels)	-	-	-	-	-	-
Employment rate of graduates from the previous academic year	-	-	-	-	-	-

(undergraduate, all categories)						
Employment rate of graduates from the previous academic year (postgraduate, all categories)	-	-	-	-	-	-
Percentage of total revenue generated through externally funded research	-	-	-	-	-	-
Number of papers published in peer-reviewed, international journals	-	-	-	-	-	-

Source: Tables under section 1-8.

### 11. Financial Reports

Name and registration number of the auditor \_\_\_\_\_ Nil \_\_\_\_\_.

Number of audit observations recorded by the auditor \_\_\_\_\_-Nil-----

Number of audit responses found satisfactory, as certified by the project directorate\_\_\_\_ Nil\_\_\_\_.

Certified audit reports as per the standard Chart of Accounts to be attached.

### 12. All India Survey of Higher Education

Date on which all applicable fields of the Data Collection Format for the All India Survey of Higher Education were completed and submitted \_\_\_\_\_15/02/2018\_\_\_\_\_

#### Instructions

- All data is to be reported as on 30<sup>th</sup> September of the current year.
- Postgraduate courses refer to courses at the Masters and MPhil level.
- The number of sanctioned seats is the number of students the college is authorized, by the UGC/DHE/affiliating University, to admit in the first year of its degree programs.
- The number of sanctioned faculty posts is the number of faculty the college is authorized, by the UGC/DHE/affiliating University, to recruit on a full-time basis.
- Enrolment is defined as the number of students who have paid their admission fees for joining a degree program by September 30 of the respective academic year.
- Admission is defined as the number of students who have paid their admission fees for joining a degree program, in the first year, by September 30 of the respective academic year and who have never been enrolled in that degree program previously.



- Other Reserved Categories include all categories of students (for e.g. sports quota, extracurricular quota, residents of Jammu and Kashmir etc.) for whom a fixed percentage of sanctioned seats are reserved.
- Examination results are to be reported for examinations held in the previous academic year, and the results for which were declared by 30<sup>th</sup> September of the current year.
- Allowed to keep terms refers to students who did not pass all subjects in the previous year but were allowed to transition to the next year of their respective degree programs.
- Regular faculty refers to faculty employed on open-ended, full-time contracts as per UGC norms.
- Contract faculty refers to faculty employed on fixed term, full-time contracts as per UGC norms.
- Guest Lecturers refers to faculty employed on a per lecture or per day basis as per UGC norms.
- Data on scholarships is to be reported on all scholarships awarded between 1<sup>st</sup> October of the previous year and 30<sup>th</sup> September of the current year.
- A hostel seat is considered occupied if a student has been allotted a seat in the hostel and the student, to whom the seat was allotted, has paid the hostel fee for the current academic year.
- Examination results refers to the average score obtained by a student, in the respective academic year, across all exams that are used to assess whether the student has met the requirement of the degree program in which he/she is enrolled.
- Student tracking refers to having up to date contact information (mobile phone and/or email address) and status (employment, unemployed, in formal education or training, not in the labour market/other) for each student for up to six from the end of the academic year when the student passed out (graduated).
- Externally funded research and consultancies refer to research and/or development funded through consultancy contracts or partnerships with a sponsor or purchaser who is external to the institution.
- A peer-reviewed journal is one that subjects an author's research to review and evaluation by others who are experts in the same field, before the research is published.
- An international journal is one that has an International Standard Serial Number (ISSN) issued by the ISSN International Centre.
- A paper is said to be published through cross-institute research collaboration if the primary affiliation of at least two authors is to different colleges/institutions.
- The institutional performance indicators common across all institutions can be found in the PIP. Institution-specific performance indicators can be found in the MOU signed between the Institution and the Department of Higher Education.
- The standard Chart of Accounts refers to the standard format for audit reports as notified by the Department of Higher Education through its orders.