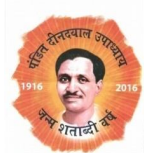


**GOVT. JUNNARDEO COLLEGE JUNNARDEO,  
chhindwara (m.p.)**



NAAC ACCREDITED – C 2015

Ph. 07160-231050

e-mail: hegcjunchi@mp.gov.in

**Annual Report 2017 – 2018**  
(Revised)

Submitted to

**Department of higher eDucation, government of  
Madhya Pradesh**

PrincipaI

Dr. Y.K. Sharma

GOVT. JUNNARDEO COLLEGE JUNNARDEO,  
chhindwara (m.p.)

## Annual Report 2017-18

This format outlines the annual reports to be published by all colleges in the Madhya Pradesh on their websites, by October 31<sup>st</sup> of each year. Part I is intended as a guide and colleges are free to alter the contents and format as they see fit. Part II, the Appendix (Institutional Performance Data and Financial Reports), is mandatory and colleges are required to report all data as per the attached format and instructions.

### Important Information –

- Name of the college - **Govt. College Junnardeo**
- Place of the college - **Junnardeo**
- District - **Chhindwara**
- Division - **Jabalpur**
- Year of establishment of college - **1967**
- Name and Contact details(Mail id, Phone) of Principal – **Dr. Y.K. Sharma, 9826165984, yugendra2016@gmail.com**
- Name, Post and Contact details of (mail id, Phone no.) of Reporting In charge – **Pro. R.D. Wadiwa, 9425837085**
- Date of report submission - **22-07-2018**

### Part I

- 1. The Principal's Report** - Highlights the key activities, events, and successes of the past year and briefly describes major new initiatives to be undertaken over the next year.

I take great pleasure in presenting the Annual Report of Govt. College Junnardeo District Chhindwara documenting its developments and achievements. The year 2015 -2016 was marked with many events and success stories. This can be attributed to the dedication and team spirit of the members of the staff and students.

Govt. College Junnardeo Established 1967. Degree College Junnardeo, an ideal institution, located in remote tribal area. The sole aim and ambition of the institution is to impart better and acute knowledge to the aspiring student belonging to socially and economically down trodden tribal sectors of this area. This institution is the only largest institution in this densely tribal populated division of Madhya Pradesh, offering higher education to the tribal students.

The college has well distinguished faculty members, which commit by heart and soul to provide a fully equipped centre of learning covering a broad spectrum of higher education. The college has now successfully completed its 50 Years. The college has an effective learner-centric environment that provides quality education and empowerment to the Students. The College operates admission to the students by Online a centralized system of admission in the state. In all the courses of both UG and PG the students can get admission through online process.

The college offers 03 UG and 05 PG Programmes duly affiliated to the University and approved by the Department of Higher Education, Govt. of M.P. Three numbers of M.A. in Economics, Sociology, and Geography, M.Com. and M.Sc. in chemistry is running that provides Quality based skilled knowledge to the students

The college plans and organized the teaching learning, CCE, Project Work and examination schedules issued by the Department of Higher Education, Govt. of M.P. Vivekanand career guidance cell assesses the student's needs in terms of knowledge and skills.

The college uses available technologies and facilities like laboratories, net facilities and LCD Projectors.

The students of college in both UG and PG Produce good results in the university.

The college has well qualified and competent faculties to take challenges of higher education. Among the permanent faculties 80% holding Ph.D. All faculty members have attended orientation and refresher programme conducted by Academic Staff College of the different Universities.

I focus on new ideas, new ways of thinking of understanding different perspectives and not on merely reading and regurgitating the material but to think critically. I want the progress of college linked to progress of society leading to future generations and therefore I focus on upgrading the library, a vital sub unit which integrates itself with overall education. For a high tech learning environment, soul software, and e-resources were introduced yet I still have other advanced plans to be implemented in the near future as libraries have crucial role in the process of institutional accreditation.

#### **New Initiatives taken by me –**

- \* To promote quality and excellence in higher education
- \* To introduce innovative methods of pedagogy and enhance collegiality on the campus.
- \* To make higher education more relevant to social and economic needs.
- \* To ensure the adequacy, maintenance and functioning of the support structure.
- \* To use higher education as the production of qualified human resources.

#### **Future key points –**

- \* To sustain quality in education
- \* To promote quality and excellence in Higher Education.
- \* To enhance collegiality on the campus.
- \* To introduce innovative methods of pedagogy.
- \* To give the institution a new sense of direction and identity.
- \* To institutionalize good practices.
- \* Ensure the adequacy, maintenance and functioning of the support structure.
- \* Optimize and integrate the modern methods of teaching and learning.
- \* Making higher education more relevant to social and economic needs.
- \* Higher Education as the production of qualified human resources.
- \* Is focussing on as how to convert a learner into human capital.

## 2. Overview (1 page)

### (i) Vision, Mission and Objectives of the college

**VISION:** The institute aims to provide quality education, to develop all-round personality and to impart vocational skills among young to enable them to play an active and meaningful role in the society.

**MISION:** To develop holistic personality of the student buy infusing ethical values, team-spirit, spiritual values, environmental awareness, women empowerment by all means to make the student a good citizen who would contribute to the socio-economic of our state and the motherland at large.

- 1) To aim and strive for quality education, developing and sharpening by the intellectual, emotional and human potential of the learner for the betterment of society.
- 2) To achieve excellence in the area of teaching and initiate a research culture and outstanding achievement in academic pursuit and outreach programs.
- 3) To enhance the standard of teaching at UG and PG level with the help of innovations and best practices.
- 4) To promote skill oriented and vocational courses.
- 5) To promote networking with college departments, research centres and laboratories.
- 6) To promote academic program that are relevant to the socio-economic needs of the local region where the college is located.
- 7) To achieve more than CGPA 3.5 (a prerequisite to achieve best status of college with potential for excellence)

### (ii) **Brief introduction of the college (including the status (Govt. / Lead/ Constituent/ Affiliated/ Private), Parent University, UGC recognition, CPE status, etc), location & campus area**

Govt. Degree College Junnardeo, an ideal institution, located in remote tribal area is bound to meet the needs of higher education in Jabalpur division and subsequently has attended a great height in providing better academic environment in the past fifty eight years.

The sole aim and ambition of the institution is to impart better and acute knowledge to the aspiring student belonging to socially and economically down trodden tribal sectors of this area. This institution is the only largest institution in this densely tribal populated division of Madhya Pradesh, offering higher education to the tribal students and catering better the needs.

The college established in 1967, is providing quality education under graduate level, almost all traditional subjects in arts, science & commerce faculties at under graduate level.

All the running courses are duly approved by the Govt. of M.P., University Grant Commission and Rani Durgawati University Jabalpur. The college is affiliated with Rani Durgawati University Jabalpur, Madhya Pradesh and has been recognized by UGC under 2 (f) & 12 (b) in 08 October 1990.

The college has well distinguished faculty members, which commit by heart and soul to provide a fully equipped centre of learning covering a broad spectrum of higher education. The college is well equipped with laboratories in the subject concerned having ultra-modern and highly sophisticated equipment, well managed library facilities catering the needs of student, lecture with strong infrastructure, smart class room.

**(iii) History of the college with significant milestones**

Govt. Degree College Junnardeo, an ideal institution, located in remote tribal area is bound to meet the needs of higher education in Jabalpur division and subsequently has attended a great height in providing better academic environment in the past fifty eight years.

The sole aim and ambition of the institution is to impart better and acute knowledge to the aspiring student belonging to socially and economically down trodden tribal sectors of this area. This institution is the only largest institution in this densely tribal populated division of Madhya Pradesh, offering higher education to the tribal students and catering better the needs.

The college established in 1967, is providing quality education under graduate level, almost all traditional subjects in arts, science & commerce faculties at under graduate level. All the running courses are duly approved by the Govt. of M.P., University Grant Commission and Rani Durgawati University Jabalpur. The college is affiliated with Rani Durgawati University Jabalpur, Madhya Pradesh and has been recognized by UGC under 2 (f) & 12 (b) in 08 October 1990.

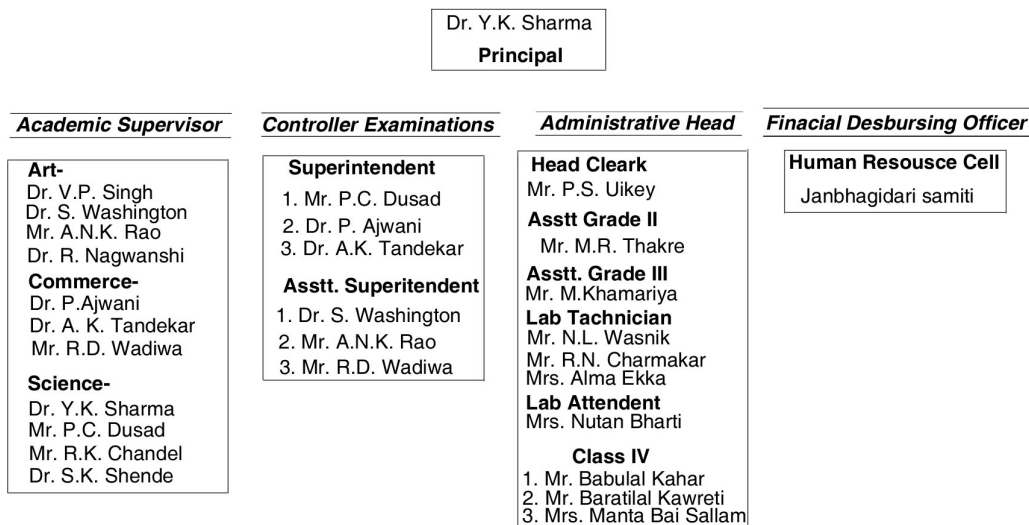
**(iv) Faculties and major disciplines**

**3. Senior Management Team and Board of Governors (1 page)**

Lists the members of the senior management team (Principal, Registrar, Deans etc.) and members of the Board of Governors including their designations and professional backgrounds.

## Administrative Hierarchy

For example -:



### 4. Admission Statistics (1 page)

- The number of applicants at the UG and PG level who ranked the college as their 1<sup>st</sup>, 2<sup>nd</sup> and 3<sup>rd</sup> preference, the number of applications received for PhD courses, and the number of students admitted at each level as per the following format.

Applications	UG	PG	PhD
Applications that ranked the college as the 1 <sup>st</sup> preference	<b>180</b>	<b>42</b>	<b>NA</b>
Applications that ranked the college as the 2 <sup>nd</sup> preference	<b>338</b>	<b>42</b>	
Applications that ranked the college as the 3 <sup>rd</sup> preference	<b>143</b>	<b>35</b>	
Total number of applications received	<b>750</b>	<b>133</b>	
Number of students admitted	<b>492</b>	<b>76</b>	

Data Source: E-pravesh portal, records of the affiliating university

- A brief demographic profile of students admitted (in terms of gender, caste, whether from MP etc.)

Name of the Course	Gender	Category	% of students from the State	% of students from other states
B.A.	Male/Female	All	100%	NIL
BCOM	Male/Female	All	100%	NIL
BSC.	Male/Female	All	100%	NIL
MCOM	Male/Female	All	100%	NIL
MA.	Male/Female	All	100%	NIL

## 5. Academic Programs: Core Programs - UG & PG

### Core programs at UG level

Stream	Name of the Core Program	Eligibility	Optional subjects
Arts	Bachelor of Arts	10+2 from a recognized Board OR 10+2 with relevant vocational course from M.P. Board	Foundation course + a group of 3 optional subjects
Commerce	Bachelor of Commerce	10+2 from a recognized Board OR 10+2 with relevant vocational course from M.P. Board	Foundation course + a group of 3 subjects (2 Compulsory and 1 optional)
Science (Maths)	Bachelor of Science (Maths)	10+2 from a recognized Board OR 10+2 with relevant vocational course from M.P. Board	Foundation course + a group of 3 subjects (2 Compulsory and 1 optional)
Science (Bio)	Bachelor of Science (Bio)	10+2 from a recognized Board OR 10+2 with relevant vocational course from M.P. Board	Foundation course + a group of 3 subjects (2 Compulsory and 1 optional)

### Core Options at PG level

Faculty	Name of the Core Program	Eligibility	Subject Options
Arts	Master of Arts	3 year Degree course in any faculty/ Honors degree course in same subject	Economics, Sociology, Geography
Commerce	Master of Commerce	3 year Degree course in same subject	Management
Science	Master of Science	3 year Degree course in same subject	Chemistry

### M. Phil/ Ph.D. Programs

S.no.	Subject	Eligibility	No. of scholars registered
NIL	NIL	NIL	NIL

### PG Diploma/ Diploma/ Certificate/ Self-financed/ Skill based Vocational/ Short term courses

Name of the Course	Department	Duration	Fees	Seats
Computer Application	Computer	3 years	3000 Per Years	B.A. Computer - 04 B.Com Computer - 10 B.Sc. Computer - 18



## 6. Academic Calendar 20 -

Academic Work	Firs Year/ First/ Third/ Fifth Semester	First Year/ Second/ Fourth/ Sixth Semester
Orientation Classes/Zero Classes/SWOT analysis	July	December
Teaching and Continuous Comprehensive Evaluation	Third week in September	Second week in March
CCE Schedule	Schedule is decided by the Semester Cell	Schedule is decided by the Semester Cell
Preparation Leave	02 November to 09 November (07 Days)	19 April to 21 April (03 Days)
Practical Exams (Graduation/Post Graduation)	Between 23 <sup>rd</sup> October to 09 <sup>th</sup> November	Between 02 <sup>nd</sup> April to 18 <sup>th</sup> April
Semester and ATKT Exams	May – June	November – December
Declaration of Examination Results	Up to university Within two months	Up to university Within two months
Semester Break (for students)	15 <sup>th</sup> December to 23 <sup>rd</sup> December	28 <sup>th</sup> May to 30 <sup>th</sup> June
Semester Break (for teachers)	15 <sup>th</sup> December to 23 <sup>rd</sup> December	28 <sup>th</sup> May to 15 <sup>th</sup> June

## 7. The Student Experience (4 pages)

Briefly describes student life in the college:

- Infrastructural facilities available to students - Classrooms, Smart classrooms, laboratories and equipment, Common Research Lab, Hostel; Canteen; Garden; Students common room, Auditorium, Sports Complex & other facilities

There exists a health cell which provides general check up randomly and counselling to the students from the physicians – 64% of students receive financial assistance from state govt., central govt. and other national agencies. Physical Education department houses a modified gym, basket ball ground and facilities for indoor games. Cross ventilated well

lighted classrooms, canteen, 3 smart class rooms, well equipped laboratories, common room, pure clean drinking water, 5 toilets are some of the facilities availed by the students. Multipurpose hall serves as a common room for students. Garden with herbs, shrubs, ornamental plants and trees add to the ambience of the college.

- Library as a learning resource- advisory committee, its composition, facilities & services (e & print), annual improvement initiatives

\* Area for browsing, reading room, soul software, computers with net facility, photocopier

\* Book Bank and free stationary for SC/ST Students.

\* Class type newspapers

\* Health magazines, employment news, journals and references are some of its features

The advisory committee along with the head of the institution formulates policies for improvement considering the suggestions of the readers (both students & staff members.

- Student support services:

- ✓ IT enabled services

Library houses IT zone for accessing e-resources. The college has 60 number of systems with latest configurations LAN facility is available in computer application department, NRC and office. Printers and Scanners are connected with LAN. WIFI facility is available college aims at acquiring in computer departments. In future the institute is committed to provide stand alone facility

- ✓ Financial assistance (scholarships/ schemes for SC/ST/OBC/ minority, Group & Health Insurance Schemes)

- o Post metric scholarship for SC/ST/OBC students

- o Gaon ki Beti

- o Pratibha Kiran Yojana

- o Grah Awas yojana

- ✓ Personal enhancement & development schemes- NCC, NSS, Facilities for physically challenged & slow learners; Tutor-Guardian Scheme, Grievance Redressal Cell, Entrepreneurship Cell, Remedial classes, Career Guidance Cell.

Apart form NCC, NSS, Remedial Classes, Career Guidance Cell, Personality Development Cell, and Environment Consciousness Cell. Sewa is persistently working towards the overall development of the individual.

This cell initiates the habit of sharing, contentment, pity, compassion, human values and above all the internal self development. It helps build a stronger 'You' and helps

the needy and the poor. The magnitude of work done is evidence of success. Remedial classes are run for slow and poor learners. Two boxes are fixed in the college campus for grievance redressal. Vivekanand Career Guidance Cell has organized Rojgar Mela, skill development programs in order to let the students stand on their feet.

- ✓ Extracurricular activities: Calendar of activities (Sports, Youth Festival, cultural and literary events), Achievements, Awards

The college ensures adequate availability of physical infrastructure and ensure its optimal utilization in effective teaching and learning and extra curricular activities.

**Sports –** Health club for physical fitness of students is equipped with motorized head mill, jogger, vibrator, twister, massager etc.

**Youth Festival –** Every year youth festival organized by the college at District level. Cultural events, involving dance, drama, singing, literary events like debate, essay writing, poetry writing, poem, parity, rangoli and many other activities take place during the annual functions.

**Annual Function -** Every end of the year annual function is organized for the students. This annual function spread over 3 days. The first day involves activities relating to arts and crafts. Literary event involves speech competition, recital, debate competition, essay writing competition, creative writing etc. Sports and games activities are organized on this very day and maximum participation of students is ensured. The 2nd day involves performing arts events, for ex. Dance, Drama, One Act Plays, Mimicry, and Skit. The last but not the least the third day is a celebration where prize distribution and At Home takes place.

- ✓ Major student welfare initiatives over the past year

- o Remedial Coaching is provided to the students who are at risk of failure and drop out.
- o Sewa Bane Swabhava first in the institution is working towards welfare of the students. It helps student in remitting their fees, providing them with by cycles and uniforms to the under privileged.
- o Physically Handicapped are benefited
- o Gaon ki Beti – scholarship/ Pratibha kiran Yojana
- o Post Metric Scholarship (SC, ST, OBC)
- o Grievance cell, health care unit, red cross cell are actively working in the respective fields.
- o Support and guidance provided to the students in preparing for the competitive exams.
- o Book bank and stationary scheme for SC, ST students
- o CM Helpline

- Extension Activities
- o Camps are organized by NCC, NSS on the out skirts to create social, political and scientific awareness. Ex Swacchata Abhiyan, College Chalo Abhiyan, Beti Bachao Beti Padhao etc.
- o All the more other academic departments too are active towards helping the poor and needy in the near by vicinity by donating them the needful.

### 8. Student Achievements (5 pages)

Highlights the most significant academic and non-academic achievements of students over the past year. This can include major academic awards and scholarships received student research, and sports and other extracurricular activities. Focuses, in particular, on profiling top achievers and describing how resources provided by the college helped these students succeed.

#### ACADEMIC

- Merit

S.no	Name of the award/ medal/ meritorious scholarship	Name of the recipient	Class	Area of achievement
NIL	NIL	NIL	NIL	NIL

- Research scholarship/ award

S.no	Name of the scholarship award/	Name of the recipient	Class	Area of research
NIL	NIL	NIL	NIL	NIL

#### CULTURAL

- Participation

S.no	Name of the event	District Level	State Level	University	National Level
NIL	NIL	NIL	NIL	NIL	NIL

- **Awards and Achievements**

Name of the student	Class	Event	Award/Achievement
NIL	NIL	NIL	NIL

## SPORTS

- **Participation**

S.no	Name of the event	Division Level	State Level	University/ National Level	International Level
1	Cricket (M)	04	03	03	
2	Football (M)	03	00	00	
3	Kushti Wrestling	01	00	01	
4	T.T.	06	00	00	
5	Volleyball	02	02	02	
6	Kabaddi	04	02	02	
7	Athletics	08	00	00	

- **Awards and Achievements**

Name of the student	Class	Sport	Achievement
Sagar Invati	BCom 5 <sup>th</sup> Sem	Kabaddi	State/University Level
Manohar Yaduwanshi	BA 3 <sup>rd</sup> Sem	Kabaddi	State/University Level
Subhash Yaduwanshi	BA 3 <sup>rd</sup> Sem	Cricket	State/University Level
Sagar Invati	BCom 5 <sup>th</sup> Sem	Cricket	State/University Level
Prithvi Ghosh	BA 5 <sup>th</sup> Sem	Cricket	State/University Level

## 9. Research Activities (4 pages)

Identifies major research themes, places these themes in their social and economic context, highlights major research achievements (publications, collaborations, intellectual property produced, external funding received etc.), and profiles top researchers. Lays out the research agenda and identifies themes for the coming year.

- **Major research themes**

S. No.	Department	Prioritized research area and expertise	Social/ economic context
NIL	NIL	NIL	NIL

- Major/Minor research projects

S. No	Name of the Faculty	Year	Title of the project	Name of funding Agency/ Industry	Total grant received
1	Commerce	2016	egkRkxcl/kh u jxk l s fNUnokMk ftys ds xkeh.k ifjokjka ea vko'; d ifjorū dj fo'kyS. kRed v/; ; u	UGC	95000

- Papers presented in regional, national and international seminars/ conferences

S. No.	Name of the faculty	Regional/ State	National	International
	Art's			
1	Dr. S. Washinton	-	05	-
2	Dr. R. Nagwanshi	-	01	-
3	Dr. V.P. Singh	-	02	-
4	Prof. A.N.K. Rao	-	02	-
	Commerce			
5	Dr. P. Ajwani	-	02	-
6	Dr. A. K. Tandekar	-	03	-
7	Prof. R. D. Wadiwa	-	01	-
	Science			
8	Dr. Y.K. Sharma	-	03	-
9	Prof. P.C. Dusad	-	02	-
10	Prof. R.K. Chandel	-	02	-
11	Dr. S.K. Shende	-	02	-

- Publications in national/ international journals

S.No.	Name of the faculty	Name of the journal	Title of the paper	ISSN/ ISBN number /Impact factor
01	Art - Dr. S.P. Koshta		cnyrh Hkjr; rLohj vlg fMfTVy bM; k	ISSN No. 2395-6321
02	Dr. S. Washington	Impact of Industrial Pollution on Environment	Environmental Disaster (Earthquakes Landslides)	ISBN No. 978-93-85304-43-9
03	Dr. R. Nagwanshi	Naveen Shodh Sansar	Women Empowerment at the grassroots level	ISSN No. 2320-8767
04	Dr. R. Nagwanshi	Vidyawarta	Renaissance and Social-Political Circumstances	ISSN No. 2319-9318
05	Dr. R. Nagwanshi	Naveen Shodh Sansar	Critical Study of English Literature	ISSN No. 2320-8767
06	Dr. R. Nagwanshi	Divya Shodh Samiksha	The Romantic Revival	ISSN No. 2394-3807

- **List of linkages/ Collaborations/ MOUs**
  - \* **Collaboration with NIIT Foundation – 2011**
  - \* **Collaboration with IL&FS Skill Development Corporation Ltd.**
  - \* **Collaboration with FDDI & ATDC Centre – 2015.**
  
- **College Publications: Research Journal, Magazine, Newsletter**

**College Magazine “Drishti” is published every year enhancing the talent of writing among students.**

### **10.Human Resources (2 pages)**

Highlights senior faculty and administrative appointments. Describes what new areas of activity (new courses, research areas, extracurricular activities etc.) and administrative improvements are enabled by these appointments.

### 1. Faculty and Administrative appointments: Teaching and Non-teaching

Positions	Teaching Faculty				Non Teaching Faculty	Technical Staff
	Prof	Promoted Prof	Assistant Prof	Guest Faculty		
Sanctioned by UGC/ University/ State Govt	03	-	20	-	10	03
<i>Filled</i>	00	01	10	12	07	03
Sanctioned by Management/ Janbhagidari Samiti/ Other authority	00	00	00	06	11	00
<i>Filled</i>	00	00	00	04	11	00

### 2. Guest Faculty: subject-wise appointments

S.no.	Name of the Guest Faculty	Qualification	Subject
1	Mr. Manoj Malviya	MA/Slet	Economics
2	Mr. Shakti Singare	MA	Economics
3	Ku. Ganbai Dabar	MA	Home science
4	Ku Anamika Thakur	MA	Zoology
5	Dr. R. Sonpure	MA/PhD	Hindi
6	Mrs. Pushpa Barde	MA /MPhil	Hindi
7	Dr. Sheelawanti Maskare	MA /PhD	Sociology
8	Dr. Supriya Sahu	MCom / PhD	Commerce
9	Ku. Neha Jhariya	MSc/MPhil	Zoology
10	Mr. Wasim	MA	Political Science
11	Mr. Narad Singh Yadav	B Lib	Library
12	Mr. Shivram Nandwanshi	MPEd	Sports

### 3. Annual improvement in academic, research & administrative Initiatives

1. Exam results have been improved from the last year
2. Students are using e-resources to gather knowledge.
3. Teachers are promoted to write research papers and students are motivated to present papers.
4. Disciplined environment is introduced through strict administration.
5. Administrative initiatives are timely taken and observed strictly.
6. Annual improvement through refresher course, orientation course, workshop.



## 11.Events and Initiatives (5 pages)

Describes major events including seminars, conferences, competitions, student study trips etc. Focuses on what was achieved and learned, and how the college will follow up.

Describes significant academic, administrative, student support, fundraising, and other initiatives over the past year. The description of each initiative will be structured around the need for the initiative, how it was designed, what resources were used, what results were achieved, and which features of the initiative drove success.

1. **Commerce department took a study tour to FDDI**
2. **Organized 21 Day Yoga Camp in College Campus.**
3. **Lectures on Environment Day, Women's Day were organized.**
4. **Conduct A Lecture on GST was organized.**
5. **A seminar on Personality Development was organized**
6. **Bank coaching was arranged by Commerce Department**
7. **Spoken English workshop was conducting.**
8. **Picnic was arranged at Tamia for its Geological importance.**

## 12. Institutional Development plan (4 pages)

Describes the college's activities over the past year under different schemes, discusses performance against strategic/institutional development plans and commitments over the previous year.

Indicator*	Baseline Value	Target for [current year]	Value as on 30 <sup>th</sup> September [current year]
	Proposal of Seminars	To develop Water harvesting system	
	Computer Tanning Programme & Internet Connection	To Conduct environmental awareness programme	
	Smart Classes		
	Renovation of Building /Principal Chambers		Girls Hostel Facility Available for more students
	Reconstruction Girls Toilets		

### Role of Internal Quality Assurance Cell (IQAC) in academic audit and initiating quality assurance strategies and processes

The task of IQAC is of quality assurance, planning and monitoring –

- \* Academic audit is done by consolidating the feedback response from students.
- \* It promotes the use of technology to enhance teaching and learning
- \* It introduces the various quality enhancing programs in compliance with the vision and mission of the college.
- \* A strict check is exercised on the committees with responsible task.

### 13.Placement Report (3 pages)

Describes the college's placement cell activities, placement rate and salary statistics, and lists major employers and sectors of employment (disaggregated by gender and course studied). Profiles successful alumni and identifies emerging placement trends.

#### Activities of Placement Cell

S.no.	Name of the activity	Name of the Resource Person/ agency	Date & Duration
1	Beauty Parlour, Rangoli class, Personality Development Training, Cooking Class, Stitching Class	Local Trainers- Smt. Vandana (Monalisha Beauty parlour) Mr. Vijay Khurve (Gayatri Mandir Junnardeo) Smt. Nisha Thakur (Taneja Bekari Chhindwara) Ku. Prabha Jharbade (Stitching Classes Junnardeo)	January to March 2017

#### Placement Details

S.no.	No. of Students Selected	List of employers/companies	Salary Package
1	32	NIIT	5000-10000 as per skill & Experience
2	07	FDDI	7000-10000 as per skill & Experience
3	35	Call Centre Chhindwara	5000-12000 as per skill & Experience

#### Alumni Profile

S.no.	Name of Alumni	Employment status	Name of the organisation
1	Dr. P. Ajwani	Govt. Servant	Higher Education
2	Prof. P.C. Dusad	Govt. Servant	Higher Education
3	Ku. Swarnima Shukla	Assistant Director Mahila balvikas	MP Govt.
4	Mr. Hanuman Poddar	Manager (Kanhhan Fuels)	WCL
5	Mr. Hemant Jain	President Lines Club Junnardeo	NGO
6	Mr. Pramod Bhammarkar	Cashier	SBI Junnardeo
7	Mr. Anil Choukse	Self Business	Hotel
8	Mr. Mukesh Soni	Govt. Servant	Higher Education

### 14.Innovations and Best Practices

### **Academic Innovations –**

- \* Uniform is introduced to make the best possible use of academic environment and to have a look-alike environment.
- \* Smart Classes are in use for post graduate classes and other academic deliverance
- \* Power point presentation, quizzes, classroom best assignments awards creating writing competition.
- \* Excursions, field visits, are introduced for the active involvement of the student and a close interaction between the teacher and the taught is ensured and cemented.

### **Innovation in Administration –**

- \* Monitoring is done through CCTV cameras
- \* Time bound work is ensured
- \* Information imparted to the staff through electronic devices
- \* All administrative work is computerized.

## **15.SWOC Analysis (strength , weaknesses, Opportunity and Challenges**

### **Strength –**

- Qualified Faculty
- Library housing 40000 books
- Considerably good infrastructure
- Active NCC & NSS unit representing at national level
- High tech gym
- Automation of College Library
- Hostel facilities for 100 Girls students

### **Weakness –**

- Lack of English Language teachers
- Lack of support staff
- Lack of play ground
- In ratio to the number of students shortage of regular faculty
- Less space in laboratories to accommodate the increasing number of students.
- The lack of absence of PG courses in Science faculty negatively affect the student progression
- No job oriented syllabus

### **Opportunities –**

- Despite the lack of advance resources, the students hailing from the neighbouring areas aspire for Higher Education.
- The college provides various programs and activities under NSS, Personality Development Programs, Sports and Cultural activities.
- Vivekanand Career Counselling Cell and UGC career counselling Cell has provided skill development opportunities to the students to some extent.
- Focusing more on learner-centric classrooms for better implementation of the curriculum.
- Progression to advanced courses.

### **Challenges –**

- Due to lack of professional/vocational courses the institution is facing challenges inviting companies for placement.
- In preparing students competent enough to face the global market scenario.
- The applied syllabus is not job oriented.
- A gap between the syllabus and a skills required by the companies.
- Getting more posts sanctioned from the government to cope with the growing number of students
- To sustain the interest of the students in general subjects.
- In increasing the participation of students in extra-curricular and co-curricular activities.
- In bringing up the attendance rate in classrooms.
- Admission to all the students resulting in increasing number of students each year.

### **16.Looking Ahead (3 pages) Future Plans**

Lays out the college's priorities and goals over the coming year. Describes key initiatives planned, what each initiative is expected to achieve, and how it will contribute to the college's long term development.

#### **Key Initiatives Planned/ implemented**

<b>S. No</b>	<b>Head (administrative/ academic, etc)</b>	<b>Nature of proposal</b>	<b>Expected Outcome</b>
1	Academic	To introduce PG in all Science Subjects and modify science labs into high-tech labs	Most of the students will be inclined to research work
2	Academic	To Start Job oriented courses under self financing scheme	Employment for girls students

## 17. Appendix: Institutional Performance Data and Financial Reports

Provides key data on the institution and its performance, including achievement against strategic plan targets and financial reports. This section is mandatory. All data fields must be completed, in the format and as per the instructions attached.

### Part II

Appendix: Institutional Performance Data and Financial Reports (all part II data kindly fill in attached excel sheet)

#### 1. Sanctioned seats and enrolment

<b>(a) Sanctioned Seats</b>					
	<b>SC</b>	<b>ST</b>	<b>Other Reserved Categories</b>	<b>General</b>	<b>Total</b>
<b>Undergraduate</b>	179	214	142	535	1070
<b>Postgraduate</b>	37	44	29	110	220
<b>PhD</b>	-	-	-	-	-

Data Source: AISHE

<b>(b) Enrolment</b>							
		<b>Undergraduate</b>			<b>Postgraduate</b>		<b>PhD</b>
		<b>Year 1</b>	<b>Year 2</b>	<b>Year 3</b>	<b>Year 1</b>	<b>Year 2</b>	
<b>SC</b>	Male	42	31	45	10	5	-
	Female	71	63	44	12	7	-
<b>ST</b>	Male	74	53	33	8	1	-
	Female	95	61	39	9	1	-
<b>Other Reserved Categories</b>	Male	74	64	47	18	4	-
	Female	94	74	75	9	9	-
<b>General</b>	Male	8	10	5	3	1	-
	Female	21	13	24	6	5	-
<b>Total</b>	Male	198	158	130	39	11	-
	Female	281	211	182	36	22	-

Data Source: AISHE

<b>Number of sanctioned seats by discipline group and enrolment in the 1<sup>st</sup> year as on September 30<sup>th</sup> [current year]</b>				
<b>Discipline Group</b>	<b>Undergraduate</b>		<b>Postgraduate</b>	
	<b>Sanctioned Seats</b>	<b>Enrolment</b>	<b>Sanctioned Seats</b>	<b>Enrolment</b>
Arts	350	215	110	30
Commerce	270	54	80	16
Criminology and Forensic Science	-	-	-	-
Cultural Studies	-	-	-	-
Defence Studies	-	-	-	-
Design	-	-	-	-
Disability Studies	-	-	-	-
Education	-	-	-	-
Fashion Technology	-	-	-	-
Fine Arts	-	-	-	-
Fisheries Science	-	-	-	-
Foreign Languages	-	-	-	-
Gandhian Studies	-	-	-	-
Home Science	-	-	-	-
Indian Languages	-	-	-	-
IT & Computer	-	-	-	-
Journalism and Mass Communication	-	-	-	-
Law	-	-	-	-
Library and Information Science	-	-	-	-
Linguistics	-	-	-	-
Management	-	-	-	-
Marine Science and Oceanography	-	-	-	-
Oriental Learning	-	-	-	-
Physical Education	-	-	-	-
Religious Studies	-	-	-	-
Science	420	227	30	30
Social Science	-	-	-	-
Social Work	-	-	-	-
Women Studies	-	-	-	-

Data Source: AISHE

2. Transition and on-time graduation

<b>(a) Transition from the 1<sup>st</sup> year to the 2<sup>nd</sup> year (Undergraduate)</b>				
		Number of students admitted to the 1 <sup>st</sup> year in [the previous academic year] (*)	Of (*), the number of students currently enrolled in the 2 <sup>nd</sup> year who:	
			Passed all subjects in the 1 <sup>st</sup> year	Were Allowed to Keep Terms
<b>SC</b>	Male	35	17	18
	Female	65	31	34
<b>ST</b>	Male	59	32	27
	Female	85	55	30
<b>Other Reserved Categories</b>	Male	59	36	23
	Female	60	43	17
<b>General</b>	Male	6	4	2
	Female	19	9	10
<b>Total</b>	Male	159	89	70
	Female	229	138	91

Data Source: AISHE, examination results declared by [affiliating university/autonomous college]

<b>(a) Transition from the 1<sup>st</sup> year to the 2<sup>nd</sup> year (Postgraduate)</b>				
		Number of students admitted to the 1 <sup>st</sup> year in [the previous academic year] (*)	Of (*), the number of students currently enrolled in the 2 <sup>nd</sup> year who:	
			Passed all subjects in the 1 <sup>st</sup> year	Were Allowed to Keep Terms
<b>SC</b>	Male	9	6	3
	Female	8	7	1
<b>ST</b>	Male	3	3	0
	Female	9	8	1
<b>Other Reserved Categories</b>	Male	14	13	1
	Female	6	6	0
<b>General</b>	Male	3	3	0
	Female	5	5	0
<b>Total</b>	Male	39	24	15
	Female	36	29	7

Data Source: AISHE, examination results declared by [affiliating university/autonomous college]

<b>(b) On-time graduation (Undergraduate)</b>			
		<b>Number of students admitted to the 1<sup>st</sup> year in [year t-3] (*)</b>	<b>Of (*), the number of students who passed all final year examinations for the previous academic year</b>
<b>SC</b>	Male	45	<b>Result Awaited</b>
	Female	44	
<b>ST</b>	Male	33	
	Female	39	
<b>Other Reserved Categories</b>	Male	47	
	Female	75	
<b>General</b>	Male	5	
	Female	24	
<b>Total</b>	Male	130	
	Female	182	

Data Source: AISHE, examination results declared by [affiliating university/autonomous college]

<b>(b) On-time graduation (Postgraduate)</b>			
		<b>Number of students admitted to the 1<sup>st</sup> year in [year t-2] (*)</b>	<b>Of (*), the number of students who passed all final year examinations in the current year</b>
<b>SC</b>	Male	5	<b>Result Awaited</b>
	Female	7	
<b>ST</b>	Male	33	
	Female	39	
<b>Other Reserved Categories</b>	Male	4	
	Female	9	
<b>General</b>	Male	1	
	Female	3	
<b>Total</b>	Male	11	
	Female	22	

Data Source: AISHE, examination results declared by [affiliating university/autonomous college]



3. Faculty and administrative staff in position and training

<b>(a) Faculty and administrative staff in position as on 30<sup>th</sup> September, [current year]</b>							
		Reserved					Unreserved
		SC	ST	MP Resident s	Females	Others	
<b>Assistant Professor</b>	Sanctioned	3	3	-	-	13	-
	Filled (Regular)	3	3	-	-	6	-
	Filled (Contract)	-	-	-	-	-	-
	Guest Lecturers	1	-	-	-	6	-
<b>Associate Professor</b>	Sanctioned	-	-	-	-	-	-
	Filled (Regular)	-	-	-	-	-	-
	Filled (Contract)	-	-	-	-	-	-
	Guest Lecturers	-	-	-	-	-	-
<b>Professor</b>	Sanctioned	-	-	-	-	3	-
	Filled (Regular)	-	-	-	-	-	-
	Filled (Contract)	-	-	-	-	-	-
	Guest Lecturers	-	-	-	-	2	-
<b>Admin. Staff (all)</b>	Sanctioned	-	2	-	-	5	-
	Filled (Regular)	-	2	-	-	5	-
	Filled (Contract)	-	-	-	-	-	-
<b>Accountant</b>	Sanctioned	-	-	-	-	1	-
	Filled (Regular)	-	-	-	-	-	-
	Filled (Contract)	-	-	-	-	-	-

Data Source: AISHE

<b>(b) Training of faculty and administrative staff between October 1<sup>st</sup> [previous year] to September 30<sup>th</sup> [current year]</b>				
		<b>Leadership and management training</b>	<b>Training in the area of academic specialisation</b>	<b>Other training</b>
<b>Assistant Professor</b>	Number trained			
	Avg. number of days			
<b>Associate Professor</b>	Number trained			
	Avg. number of days			
<b>Professor Dr. Y.K. Sharma</b>	Number trained	-	Financial Management	
	Avg. number of days			
<b>Administrative Staff (all)</b>	Number trained		N/A	
	Avg. number of days		N/A	
<b>Accountant</b>	Number trained		N/A	
	Avg. number of days		N/A	

Data Source: Compiled from training certificates submitted by faculty/administrative staff

<b>(c) Faculty qualifications as on 30<sup>th</sup> September, [Current Year]</b>					
		<b>PhD</b>	<b>Postgraduate</b>	<b>Undergraduate</b>	<b>Others</b>
<b>Assistant Professor</b>	Regular	02	04	-	-
	Contract	-	-	-	-
	Guest Lecturers	02	10	-	-
<b>Associate Professor</b>	Regular	04	-	-	-
	Contract	-	-	-	-
	Guest Lecturers	-	-	-	-
<b>Professor</b>	Regular	01	-	-	-
	Contract	-	-	-	-
	Guest Lecturers	-	-	-	-

Data Source: AISHE

4. Student support services

<b>(a) Financial support received (from all sources) by students in the college between October 1<sup>st</sup> [previous year] to September 30<sup>th</sup> [current year]</b>							
		Undergraduate		Postgraduate		PhD	
		Number	Average Value (Rs.)	Number	Average Value (Rs.)	Number	Average Value (Rs.)
SC	Male	104	796580	11	121510	0	0
	Female	148	1187647	13	136825	0	0
ST	Male	141	1120185	06	64420	0	0
	Female	170	1292700	10	102510	0	0
General	Male	143	831900	14	88930	0	0
	Female	174	1016225	13	87405	0	0
Total	Male	388	2748665	31	274860	0	0
	Female	492	3496572	36	326740	0	0

Data Source: AISHE

<b>(a) Financial support received, from the DHE, by students in the college between October 1<sup>st</sup> [previous year] to September 30<sup>th</sup> [current year]</b>							
		Undergraduate		Postgraduate		PhD	
		Number	Average Value (Rs.)	Number	Average Value (Rs.)	Number	Average Value (Rs.)
SC	Male						
	Female						
ST	Male						
	Female						
General	Male						
	Female						
Total	Male						
	Female						

Data Source: College records, DHE

<b>(b) Hostel occupancy as on 30<sup>th</sup> September, [Current Year] (all hostels)</b>		
<b>Capacity</b> Males: Nil Females: 02		<b>Number of residents</b>
SC	Male	Under process
	Female	
ST	Male	
	Female	
General	Male	
	Female	
Total	Male	
	Female	

Data Source: Hostel register verified against fee receipts on record

<b>(c) Hostel occupancy as on 30<sup>th</sup> September, [Current Year] (girls only hostels opened after _____)</b>	
<b>Capacity - 100</b>	<b>Number of residents</b>
SC	<i>Under process</i>
ST	
General	
<b>Total</b>	

Data Source: Hostel register verified against fee receipts on record

5. Examination Results

<b>(a) Examination results for [previous academic year] (undergraduate)</b>											
		SC		ST		Other Reserved Categories		General		Total	
		M	F	M	F	M	F	M	F	M	F
<b>1<sup>st</sup> year</b>	Appeared	41	83	52	62	59	104	16	42	168	291
	1 <sup>st</sup> division										
	2 <sup>nd</sup> Division										
	3 <sup>rd</sup> Division										
<b>2<sup>nd</sup> year</b>	Appeared	28	50	36	49	56	54	8	13	128	166
	1 <sup>st</sup> division									0	0
	2 <sup>nd</sup> Division									0	0
	3 <sup>rd</sup> Division									0	0
<b>3<sup>rd</sup> year</b>	Appeared	45	44	33	39	47	75	5	24	130	182
	1 <sup>st</sup> division									0	0
	2 <sup>nd</sup> Division									0	0
	3 <sup>rd</sup> Division									0	0

Data Source: AISHE, Examination results declared by [affiliating university/autonomous college]

<b>(a) Examination results for [previous academic year] (postgraduate)</b>											
		SC		ST		Other Reserved Categories		General		Total	
		M	F	M	F	M	F	M	F	M	F
<b>1<sup>st</sup> year</b>	Appeared	6	15	3	7	9	13	6	6	24	41
	1 <sup>st</sup> division			Result Awated							
	2 <sup>nd</sup> Division										
	3 <sup>rd</sup> Division										
<b>2<sup>nd</sup> year</b>	Appeared	1	24	1	2	6	9	0	1	8	36
	1 <sup>st</sup> division			Result Awated							
	2 <sup>nd</sup> Division										
	3 <sup>rd</sup> Division										

Data Source: AISHE, Examination results declared by [affiliating university/autonomous college]

6. Placement and student tracking

<b>(a) Placement and Tracking of Students who graduated in [previous academic year] (Undergraduate)</b>						
		Number of students who graduated in [the previous academic year] (*)	Of (*), the number of students who were successfully tracked and are:			
			Employed/ Self-employed	In education/ training	Unemployed	Not in the labour force
<b>SC</b>	Male	41	3	8	38	
	Female	41	4	12	37	
<b>ST</b>	Male	21	2	4	19	
	Female	28	5	9	23	
<b>General</b>	Male	27	5	16	22	
	Female	53	8	27	45	
<b>Total</b>	<b>Male</b>	<b>89</b>	<b>10</b>	<b>28</b>	<b>79</b>	
	<b>Female</b>	<b>122</b>	<b>17</b>	<b>48</b>	<b>105</b>	

Data Source: Records of the college placement cell

<b>(b) Placement and Tracking of Students who graduated in [previous academic year] (Postgraduate)</b>						
		<b>Number of students who graduated in [the previous academic year] (*)</b>	<b>Of (*), the number of students who were successfully tracked and are:</b>			
			<b>Employed/ Self-employed</b>	<b>In education/ training</b>	<b>Unemployed</b>	<b>Not in the labour force</b>
<b>SC</b>	Male	5	1	2	4	
	Female	7	2	2	5	
<b>ST</b>	Male	2	0	0	2	
	Female	2	1	0	1	
<b>General</b>	Male	9	3	4	6	
	Female	17	4	6	13	
<b>Total</b>	<b>Male</b>	<b>16</b>	<b>4</b>	<b>6</b>	<b>12</b>	
	<b>Female</b>	<b>26</b>	<b>7</b>	<b>8</b>	<b>19</b>	

Data Source: Records of the college placement cell

#### 7. PhDs Awarded

<b>Number of PhDs awarded between October 1<sup>st</sup> [previous year] to September 30<sup>th</sup> [current year]</b>	
<b>Discipline Group</b>	<b>Number</b>
Arts	
Commerce	
Criminology and Forensic Science	
Cultural Studies	
Defence Studies	
Design	
Disability Studies	
Education	
Fashion Technology	
Fine Arts	
Fisheries Science	
Foreign Languages	
Gandhian Studies	
Home Science	
Indian Languages	
IT & Computer	
Journalism and Mass Communication	
Law	
Library and Information Science	
Linguistics	

Management	
Marine Science and Oceanography	
Oriental Learning	
Physical Education	
Religious Studies	
Science	
Social Science	
Social Work	
Women Studies	
Literature	
Other	
<b>All disciplines</b>	

Data Source: AISHE

8. Research and consultancy

<b>Revenue generated through externally funded research and consultancies over [previous financial year]</b>		
<b>Discipline Group</b>	<b>Number of active projects</b>	<b>Total Revenue Generated (Rs. lakhs)</b>
Arts		
Commerce		
Criminology and Forensic Science		
Cultural Studies		
Defence Studies		
Design		
Disability Studies		
Education		
Fashion Technology		
Fine Arts		
Fisheries Science		
Foreign Languages		
Gandhian Studies		
Home Science		
Indian Languages		
IT & Computer		
Journalism and Mass Communication		
Law		
Library and Information Science		
Linguistics		
Management		
Marine Science and Oceanography		
Oriental Learning		

Others / Inter-disciplinary		
Physical Education		
Religious Studies		
Science		
Social Science		
Social Work		
Veterinary and Animal Sciences		
Women Studies		
<b>All disciplines</b>		

Data Source: College/university records



<b>Number of papers published in peer-reviewed journals between October 1<sup>st</sup> [previous year] to September 30<sup>th</sup> [current year]</b>			
<b>Discipline Group</b>	<b>Number of papers published</b>		<b>Number of published papers through cross-institute research collaboration</b>
	<b>International Journals</b>	<b>National Journals</b>	
Arts	04	02	1. ISSN No- 2395-6321 2. ISSN No- 2394-3807 3. ISSN No - 2320-8767 4. ISSN No - 2320-8767 5. ISSN No. 2319-9318 6. ISBN No. 978-93-85304-43-9
Commerce	-	-	
Criminology and Forensic Science	-	-	
Cultural Studies	-	-	
Defence Studies	-	-	
Design	-	-	
Disability Studies	-	-	
Education	-	-	
Fashion Technology	-	-	
Fine Arts	-	-	
Fisheries Science	-	-	
Foreign Languages	-	-	
Gandhian Studies	-	-	
Home Science	-	-	
Indian Languages	-	-	
IT & Computer	-	-	
Journalism and Mass Communication	-	-	
Law	-	-	
Library and Information Science	-	-	
Linguistics	-	-	
Management	-	-	
Marine Science and Oceanography	-	-	
Oriental Learning	-	-	
Others / Inter-disciplinary	-	-	
Physical Education	-	-	
Religious Studies	-	-	
Science	-	-	
Social Science	-	-	
Social Work	-	-	
Women Studies	-	-	
<b>All disciplines</b>	-	-	

Date Source: College records based on published papers submitted by faculty

9. NAAC accreditation and UGC autonomy

	Date of Application (LOI & SSR submitted)	Date on which accreditation was received	Grade	Valid till
1 <sup>st</sup> Cycle	-	31/03/2017	C+	2015
2 <sup>nd</sup> Cycle	-	14/09/2015	C	2020
3 <sup>rd</sup> Cycle	-	-	-	-

Date of submission of the Annual Quality Assurance Report for the current year: 935/22-12-2017.

Does the college have currently valid UGC autonomy? Nil.  
If yes, by order number \_\_\_\_\_, dated \_\_\_\_\_.

10. Institutional Trends

Variable	Baseline Value	[Year 1]	[Year 2]	[Year 3]	[Year 4]	Current Year
Percentage of sanctioned seats in the 1 <sup>st</sup> year filled (undergraduate, all categories)	1070	39%	51%	54%	46%	48%
Percentage of sanctioned seats in the 1 <sup>st</sup> year filled (postgraduate, all categories)	220	41%	31%	34%	35%	38%
Transition rate from the 1 <sup>st</sup> year to the 2 <sup>nd</sup> year (undergraduate, all categories)	-	38%	40%	34%	38%	42%
On-time graduation rate (undergraduate, all categories)	-	43%	50%	51%	53%	-
Transition rate from the 1 <sup>st</sup> year to the 2 <sup>nd</sup> year (post graduate, all categories)	-	100%	74%	44%	89%	92%
On-time graduation rate (postgraduate, all categories)	-	51%	69%	40%	38%	-
Regular faculty in position rate (all levels, reserved categories)	-	41%	35%	39%	42%	429
Regular faculty in position rate (all levels, unreserved categories)	-	51	38	131	29	63

Percentage of regular faculty with PhDs (all levels)	-	-	-	-	-	-
Employment rate of graduates from the previous academic year (undergraduate, all categories)	-	-	-	-	-	-
Employment rate of graduates from the previous academic year (postgraduate, all categories)	-	-	-	-	-	-
Percentage of total revenue generated through externally funded research	-	-	-	-	-	-
Number of papers published in peer-reviewed, international journals	-	-	-	-	-	-

Source: Tables under section 1-8.

#### 11. Financial Reports

Name and registration number of the auditor **Sachin Verma Company C.A. Chhindwara Reg-019658C**

Number of audit observations recorded by the auditor **Govt. College Cashbook Account. AF/PD Cashbook Account University Cashbook Account**

Number of audit responses found satisfactory, as certified by the project directorate\_\_\_\_\_.

Certified audit reports as per the standard Chart of Accounts to be attached.

**Audit Reports Financial Year**

#### 12. All India Survey of Higher Education

Date on which all applicable fields of the Data Collection Format for the All India Survey of Higher Education were completed and submitted By :- **C-59144-2017 Date-15-06-2018.**

## Instructions

- All data is to be reported as on 30<sup>th</sup> September of the current year.
- Postgraduate courses refer to courses at the Masters and MPhil level.
- The number of sanctioned seats is the number of students the college is authorized, by the UGC/DHE/affiliating University, to admit in the first year of its degree programs.
- The number of sanctioned faculty posts is the number of faculty the college is authorized, by the UGC/DHE/affiliating University, to recruit on a full-time basis.
- Enrolment is defined as the number of students who have paid their admission fees for joining a degree program by September 30 of the respective academic year.
- Admission is defined as the number of students who have paid their admission fees for joining a degree program, in the first year, by September 30 of the respective academic year and who have never been enrolled in that degree program previously.
- Other Reserved Categories include all categories of students (for e.g. sports quota, extracurricular quota, residents of Jammu and Kashmir etc.) for whom a fixed percentage of sanctioned seats are reserved.
- Examination results are to be reported for examinations held in the previous academic year, and the results for which were declared by 30<sup>th</sup> September of the current year.
- Allowed to keep terms refers to students who did not pass all subjects in the previous year but were allowed to transition to the next year of their respective degree programs.
- Regular faculty refers to faculty employed on open-ended, full-time contracts as per UGC norms.
- Contract faculty refers to faculty employed on fixed term, full-time contracts as per UGC norms.
- Guest Lecturers refers to faculty employed on a per lecture or per day basis as per UGC norms.
- Data on scholarships is to be reported on all scholarships awarded between 1<sup>st</sup> October of the previous year and 30<sup>th</sup> September of the current year.
- A hostel seat is considered occupied if a student has been allotted a seat in the hostel and the student, to whom the seat was allotted, has paid the hostel fee for the current academic year.
- Examination results refers to the average score obtained by a student, in the respective academic year, across all exams that are used to assess whether the student has met the requirement of the degree program in which he/she is enrolled.
- Student tracking refers to having up to date contact information (mobile phone and/or email address) and status (employment, unemployed, in formal education or training, not in the labour market/other) for each student for up to six from the end of the academic year when the student passed out (graduated).
- Externally funded research and consultancies refer to research and/or development funded through consultancy contracts or partnerships with a sponsor or purchaser who is external to the institution.

- A peer-reviewed journal is one that subjects an author's research to review and evaluation by others who are experts in the same field, before the research is published.
- An international journal is one that has an International Standard Serial Number (ISSN) issued by the ISSN International Centre.
- A paper is said to be published through cross-institute research collaboration if the primary affiliation of at least two authors is to different colleges/institutions.
- The institutional performance indicators common across all institutions can be found in the PIP. Institution-specific performance indicators can be found in the MOU signed between the Institution and the Department of Higher Education.
- The standard Chart of Accounts refers to the standard format for audit reports as notified by the Department of Higher Education through its orders.