

GOVT .ARTS ,COMMERCE & SCIENCE UG COLLEGE SUKHTAWA

HOSHANGABAD

2017-18



PLACE -HOSHANGABAD
DATE-02-08-2018

[DR.SHEELA THAKUR]
Reporting In charge
GOVT COLLEGE SUKHTAWA

[DR.B.D.KHATARKAR]
PRINCIPAL
GOVT COLLEGE SUKHTAWA

Annual Report 2017-18

This format outlines the annual reports to be published by all colleges in the Madhya Pradesh on their websites, by October 31st of each year. Part I is intended as a guide and colleges are free to alter the contents and format as they see fit. Part II, the Appendix (Institutional Performance Data and Financial Reports), is mandatory and colleges are required to report all data as per the attached format and instructions.

Important Information –

Important Information –

- Name of the college -**Govt. Arts ,Commerse & Science College, Sukhtawa**
- Place of the college -**NH-69 Betul Road village sukhtawa,Block-Kesla,Teh-itarsi**
- District -**Hoshangabad**
- Division -**Narmadapuram**
- Year of establishment of college -**2011**
- Name and Contact details - **Dr. B.D.KHATARKAR, 9406936838**
(Mail id , Phone) of Principal, **07572-271302,**
Govt.collegesukhatawa@gmail.com
- Name , Post and Contact details - **Dr.Sheela Thakur , 9993954772**
of (mail id, Phone no.) of **thakur55sheela@gmail.com**
Reporting In charge
- Date of report submission - **11/11/2017**

1. The Principal's Report (2 pages)- Highlights the key activities, events, and successes of the past year and briefly describes major new initiatives to be undertaken over the next year.

1- Highlights the key activities, events, and successes of the past year and briefly describes major new initiatives to be undertaken over the next year.

2 Ever since its establishment in July, 2011, **Govt. Arts ,Commerse & Science College, Sukhtawa**, has been catering to the academic needs of the students of remote rural villages in the periphery of Itarsi town. At the same time, its beneficiaries also include the children of a large number of railways employees and employees of ordnance factory, Military Engineering Services (Central Proof Establishment) and National Thermal Plant Corporation (N.T.P.C.), who are posted here. It is worth mentioning that about 78% students studying here belong to S.C., S.T. and O.B.C. categories and out of them 9% are tribal belonging to very remote area. spheres of teaching and learning. Efforts have been made to live up to the expectations of The Institute will continue to strive for excellence in academics and cultivation of core values and is determined to overcome all obstacles and shortcomings on the way. Today, the college provides higher education in all the three disciplines- Arts,B.A., B.Com., B.Sc. U.G. level, the academic programmers include- Botany, Zoology, Chemistry, Mathematics, Physics, Hindi literature, Zoology, managed by it. A number of persons both in teaching and non-teaching are appointed by it on temporary basis and thus provides job opportunities to people. In fact, Janbhagidari Samiti here is a model to be followed by other institutions.

The faculty members of the college consists of 03 regular staff and 10 Guest Faculties (against permanent posts) with 03 daily wages employee appointed by college has vibrant N.C.C., N.S.S., Career Counseling Cell, Red Cross unit and Sports scheme of Pratibha Kiran Yojana, Gaon ki beti yojana, Poor boys Fund and scholarship for S.C., S.T., and O.B.C. students.

laboratory manual etc making temporary display of diagram of board model chart ,books note .

remedial trading student classes library consultation role play by student flow chart display of presentation of topic of the day, each student solved model question paper and objective question.

project again women's explanation aware program for health education ,national literacy mission-encouragement for work nss social activities social work to literate college student to be a good citizen .arrange education of four year ug student by practical knowledge

arrange power point presentation

2. Overview (1 page)

- Vision, Mission and Objectives of the college

- Our On time Graduation Rate should be 50% till 2022.
- Rate of self-employment for our graduates should be 5% till 2022.
- Rate of Placements/Campus placements should be 5% till 2022.
- Percentage of Students/staff Satisfaction should be above 80% in the Satisfaction

- Brief introduction of the college (including the status (Govt. / Lead/ Constituent/ Affiliated/ Private), Parent University, UGC recognition, CPE status, etc), location & campus area

The vision and mission and of the institution are :-

Vision- The vision of the institution is to provide quality education to the students, instil moral values in them and build their career and make them responsible citizens of the country.

Status - (Govt. / Lead/ Constituent/ Affiliated/ Private) : Government
Parent University : Barkatullah University, Bhopal

UGC recognition : Details of UGC recognition:

i. 2 (f)

location & campus area :

Location of the campus and area in sq.mts:

Location * Rular

- History of the college with significant milestones

Establishment of the college: JULY -2011 with Arts and Commerce faculties.
 UGC recognition: under 2f – June 2017
 Science Faculty with Physics, Chemistry, Mathematics, Botany and Zoology
 opened in-2012
 Audit was done in September 2017 by A.G.M.P.
Janbhagidari Samiti started working in the year-2016

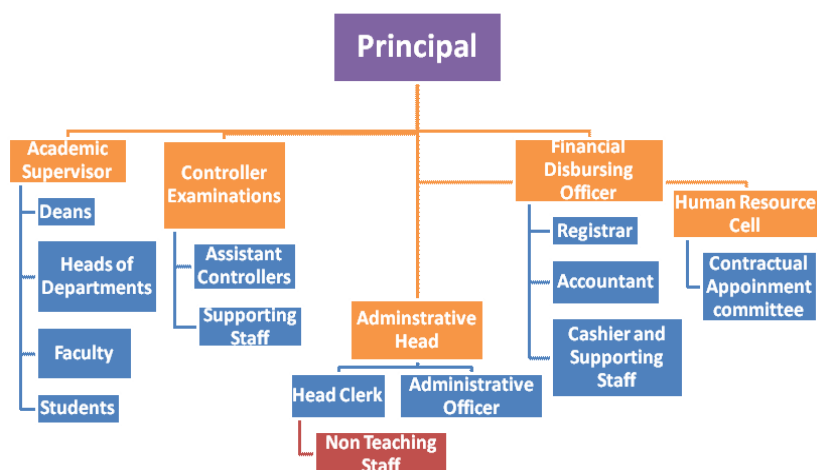
- **Faculties and major disciplines**
- Arts Faculty-B.A.
- Commerce Faculty-B.Com
- Science Faculty-B.Sc.

3. Senior Management Team and Board of Governors (1 page)

Lists the members of the senior management team (Principal, Registrar, Deans etc.) and members of the Board of Governors including their designations and professional backgrounds.

Administrative Hierarchy

Principal & DDO	- Dr. B.D.KHATARKAR
Exam Co-ordinator	- Dr. SHEELA THAKUR
Head of the Department	
Economics	- Dr. B.D.KHATARKAR
Commerce	-Dr.L.N.PARASHAR
Hindi	- Dr. SHEELA THAKUR
Political Science	- GUEST FACULTY -SAILENDRA VASNIK
English	- GUEST FACULTY-SMT SANDHYA UPADHYAY
Commerce	- GUEST FACULTY -1-RAJESH BHATIYA 2-SUDARSHNA RAJ
Sociology	- GUEST FACULTY -Dr.SAROJ JAWALKAR
Botany,	- GUEST FACULTY -Dr. RAJESH ARYA
Zoology	- VECANT
Chemistry	- GUEST FACULTY -RAMESH PAHADE
Physics	- GUEST FACULTY -DEEPSHIKHA KEDARE
Mathematics	- GUEST FACULTY -SHRI VEDPRAKASH



List of Chairperson/members of Statutory Bodies like Board of Governors/
Executive Committee/ Academic Council/ Janbhagidari Samiti, et

Janbhagidari Samiti

Chairperson

- Shri RAJENDRA SALUJA

Secretary

-Dr. B.D.KHATARKAR

Member In charge

-Dr. SHEELA THAKUR

For example -:

4. Admission Statistics (1 page)

- The number of applicants at the UG and PG level who ranked the college as their 1st, 2nd and 3rd preference, the number of applications received for PhD courses, and the number of students admitted at each level as per the following format.

Applications	UG	PG	PhD
Applications that ranked the college as the 1 st preference	-	-	NA
Applications that ranked the college as the 2 nd preference	-	-	
Applications that ranked the college as the 3 rd preference	-	-	
Total number of applications received	-	-	
Number of students admitted	584	NIL	

Data Source: E- pravesh portal, records of the affiliating university

- A brief demographic profile of students admitted (in terms of gender, caste, whether from MP etc.)

Name of the Course	Gender		Category				% of students from the State	% of students from other states
	MALE	FEMALE	SC	ST	OBC	GEN		
BA	153	163	35	210	66	5	100%	NO
BCOM	39	26	6	28	25	4	100%	NO
BSC	92	111	33	105	61	4	100%	NO

5. Academic Programs: Core Programs - UG & PG

Core programs at UG level

Stream	Name of the Core Program	Eligibility	Optional subjects
Arts	Bachelor of Arts	10+2 from a recognized Board OR 10+2 with relevant vocational course from M.P. Board	Foundation course + a group of 3 optional subjects
Science	Bachelor of Science	10+2 from a recognized Board OR 10+2 with relevant vocational course from M.P. Board	Foundation course + a group of 3 optional subjects
Commerce	Bachelor of Commerce	10+2 from a recognized Board OR 10+2 with relevant vocational course from M.P. Board	Foundation course + a group of 3 optional subjects

Academic Work	First/ Third/ Fifth Semester	Second/ Fourth/ Sixth Semester
Orientation Classes/Zero Classes/SWOT analysis	01 JULY TO 08 JULY 2017	26 DEC 2017
Teaching and Continuous Comprehensive Evaluation	10 JULY TO 02 NOV 2017	27 DEC TO 18 APRIL 2018
CCE Schedule	SEP 3RD WEEK	MARCH 2 WEEKS
Practical Exams (Graduation/Post Graduation)	BETWEEN OF 23 OCT TO 09 NOV 2017	BETWEEN OF 02 APRIL 2018 TO 18 APRIL 2017
PREPRATION LEAVE	02 NOV TO 09 NOV 2017	19 APRIL TO 21 APRIL 2018
Semester and ATKT Exams	10 NOV TO 14 DEC 2017	23 APRIL TO 26 MAY 2018
Declaration of Examination Results	31 DEC 2017	15 JUN 2018
Semester Break (for students)	15 DEC TO 23 DEC 2017	28 MAY TO 30 JUN 2018
Semester Break (for teachers)	15 DEC TO 23 DEC 2017	28 MAY TO 15 JUN 2018

7. The Student Experience (4 pages)

Briefly describes student life in the college:

- Infrastructural facilities available to students - Classrooms, Smart classrooms, laboratories and equipment, Common Research Lab, Hostel; Canteen; Garden; Students common room, Auditorium, Sports Complex & other facilities

Classrooms- 11, Laboratories- (Physics, Chemistry, Botany, Zoology, and) Botanical Garden-

N.R.C.(Network Resource Centre): 5 computers with internet, photocopier, printer, scanner, fax etc.

Swami Vivekanand Career Counseling Cell: library, 1 photocopier, , fax and printer, 2 printers and internet facility.

Departmental office rooms: 14 rooms with

A play ground with a Guest sports teacher.

Library as a learning resource- advisory committee, its composition, facilities & services (e & print), annual improvement initiatives

Yes, the library has an Advisory Committee with a caretaker Professor-in charge as the post of librarian is vacant. Dr.Sheela Thakur, Head of the Department of Hindi is the care-taker Professor in charge of library. This committee has some other professors as its members. -

- Student support services:
 - ✓ IT enabled services

NIL

&

- ✓ Financial assistance (scholarships/ schemes for SC/ST/OBC/ inority,
- ✓ Group & Health Insurance Schemes)

Scholarships, transport allowance, free books and stationery, fee concession, remedial coaching, job-oriented training programmes organized by Swami Vivekanand Career Counselling Cell.

- ✓ Personal enhancement & development schemes- NCC, NSS, Facilities for physically challenged & slow learners; Tutor-Guardian Scheme, Grievance Redressed Cell, Entrepreneurship Cell, Remedial classes, Career Guidance Cell.

NIL

- ✓ Extracurricular activities: Calendar of activities (Sports, Youth Festival, cultural and literary events), Achievements, Awards

- ✓ Major student welfare initiatives over the past year

The welfare schemes made available to the students by the institution are different kinds of scholarships available for SC, ST, OBC, differently abled students, and girls under different schemes like Pratibha Kiran Yojana, Gaon ki Beti Yojana, Poor Boys Fund etc.; transport allowance to students from remote areas; book bank and stationery scheme for SC and ST students; job-oriented training programmes organized for students from time to time, social service oriented training programmes and camp organized by N.S.S., patriotic and army skills provided to students by N.C.C., blood donation and health camps organized by Red Cross, Remedial Coaching and Coaching for entry into jobs etc.;

8. Student Achievements (5 pages)

Highlights the most significant academic and non-academic achievements of students over the past year. This can include major academic awards and scholarships received student research, and sports and other extracurricular activities. Focusses, in particular, on profiling top achievers and describing how resources provided by the college helped these students succeed.

ACADEMIC

- Merit

S.no	Name of the award/ medal/ meritorious scholarship	Name of the recipient	Class	Area of achievement
1	meritorious award	1	BA-1	COLLEGE LEVEL

- Research scholarship/ award

S.no	Name of the scholarship award/	Name of the recipient	Class	Area of research
1	NIL	NIL	NIL	NIL
2	NIL	NIL	NIL	NIL
3	NIL	NIL	NIL	NIL
4	NIL	NIL	NIL	NIL
5	NIL	NIL	NIL	NIL

CULTURAL

- Participation

S.no	Name of the event	District Level	State Level	University	National Level
1	ANNUAL FUNCTION	COLLEGE LEVEL	-	-	-
2	SPOT PAINTING	COLLEGE LEVEL			
3	POSTER MAKING	COLLEGE LEVEL			
4	SKIL	COLLEGE LEVEL			

Name of the student	Class	Event	Award/Achievement
<i>NIL</i>	<i>NIL</i>	<i>NIL</i>	<i>NIL</i>
<i>NIL</i>	<i>NIL</i>	<i>NIL</i>	<i>NIL</i>
<i>NIL</i>	<i>NIL</i>	<i>NIL</i>	<i>NIL</i>
<i>NIL</i>	<i>NIL</i>	<i>NIL</i>	<i>NIL</i>
<i>NIL</i>	<i>NIL</i>	<i>NIL</i>	<i>NIL</i>
<i>NIL</i>	<i>NIL</i>	<i>NIL</i>	<i>NIL</i>
<i>NIL</i>	<i>NIL</i>	<i>NIL</i>	<i>NIL</i>
<i>NIL</i>	<i>NIL</i>	<i>NIL</i>	<i>NIL</i>
<i>NIL</i>	<i>NIL</i>	<i>NIL</i>	<i>NIL</i>
<i>NIL</i>	<i>NIL</i>	<i>NIL</i>	<i>NIL</i>

SPORTS

- Participation

S.no	Name of the event	Division Level	State Level	University/ National Level	International Level
<i>01</i>	<i>BOLLYBAL</i>	<i>YES</i>	<i>-</i>	<i>-</i>	<i>-</i>

- Awards and Achievements

Name of the student	Class	Sport	Award/Achievement
<i>NIL</i>	<i>NIL</i>	<i>NIL</i>	<i>NIL</i>
<i>NIL</i>	<i>NIL</i>	<i>NIL</i>	<i>NIL</i>
<i>NIL</i>	<i>NIL</i>	<i>NIL</i>	<i>NIL</i>
<i>NIL</i>	<i>NIL</i>	<i>NIL</i>	<i>NIL</i>
<i>NIL</i>	<i>NIL</i>	<i>NIL</i>	<i>NIL</i>
<i>NIL</i>	<i>NIL</i>	<i>NIL</i>	<i>NIL</i>
<i>NIL</i>	<i>NIL</i>	<i>NIL</i>	<i>NIL</i>
<i>NIL</i>	<i>NIL</i>	<i>NIL</i>	<i>NIL</i>

9. Research Activities (4 pages)

Identifies major research themes, places these themes in their social and economic context, highlights major research achievements (publications, collaborations, intellectual property produced, external funding received etc.), and profiles top researchers. Lays out the research agenda and identifies themes for the coming year.

- Major research themes

S. No.	Department	Prioritized research area and expertise	Social/ economic context
<i>NIL</i>	<i>NIL</i>	<i>NIL</i>	<i>NIL</i>
<i>NIL</i>	<i>NIL</i>	<i>NIL</i>	<i>NIL</i>
<i>NIL</i>	<i>NIL</i>	<i>NIL</i>	<i>NIL</i>
<i>NIL</i>	<i>NIL</i>	<i>NIL</i>	<i>NIL</i>

- Major/Minor research projects

S. No	Name of the Faculty	Year	Title of the project	Name of funding Agency/ Industry	Total grant received
NIL	NIL	NIL	NIL	NIL	NIL

- Papers presented in regional, national and international seminars/ conferences

S. No.	Name of the faculty	Regional/ State	National	International
NIL	NIL	NIL	NIL	NIL
NIL	NIL	NIL	NIL	NIL
NIL	NIL	NIL	NIL	NIL
NIL	NIL	NIL	NIL	NIL
NIL	NIL	NIL	NIL	NIL
NIL	NIL	NIL	NIL	NIL
NIL	NIL	NIL	NIL	NIL

- Publications in national/ international journals

S.No.	Name of the faculty	Name of the journal	Title of the paper	ISSN/ ISBN number /Impact factor
NIL	NIL	NIL	NIL	NIL
NIL	NIL	NIL	NIL	NIL
NIL	NIL	NIL	NIL	NIL
NIL	NIL	NIL	NIL	NIL
NIL	NIL	NIL	NIL	NIL
NIL	NIL	NIL	NIL	NIL

- List of linkages/ Collaborations/ MOUs

NIL

- College Publications: Research Journal, Magazine, Newsletter

NIL

10. Human Resources (2 pages)

Highlights senior faculty and administrative appointments. Describes what new areas of activity (new courses, research areas, extracurricular activities etc.) and administrative improvements are enabled by these appointments.

1. Faculty and Administrative appointments: Teaching and Non-teaching

Positions	Teaching Faculty				Non Teaching Faculty	Technical Staff
	Prof	Promoted Prof	Assistant Prof	Guest Faculty		
Sanctioned by UGC/ University/ State Govt						-
<i>Filled</i>	01	-	02	10	06	-
Sanctioned by Management/ Janbhagidari Samiti/ Other authority	-	-	-	01	01	-
<i>Filled</i>	01		02	11	07	

2. Guest Faculty: subject-wise appointments

S.no.	Name of the Guest Faculty	Qualification	Subject
1	DR RAJESH ARYA	PHD	BOTANY
2	DR SAROJA JAWALKAR	PHD+NET	SOCIOLOGY
3	RAJESH BHATIYA	M-FHILL	COMMERCE
4	SUDARSHNA RAJ	SLET	COMMERCE
5	RAMESH PAHADE	PG	CHEMISTRY
6	SANDHYA UPADHYAY	M-FHIL	ENGLISH
7	SAILENDRA VASNIK	M-FHIL	POLITICAL SCIENCE
8	VED PRAKASH BHARADWAJ	PG	MATHS
9	RADHA ASHISH PANDE	M-FHIL	SPORTS OFFICER
10	DEEPSHIKHA KEDARE	PG LEVEL	PHYSICS

3. Annual improvement in academic, research & administrative Initiatives

NIL

11. Events and Initiatives (5 pages)

Describes major events including seminars, conferences, competitions, student study trips etc. Focuses on what was achieved and learned, and how the college will follow up.

Describes significant academic, administrative, student support, fundraising, and other initiatives over the past year. The description of each initiative will be structured around the need for the initiative, how it was designed, what resources were used, what results were achieved, and which features of the initiative drove success.

--

12. Institutional Development plan (4 pages)

Describes the college's activities over the past year under different schemes, discusses performance against strategic/institutional development plans and commitments over the previous year.

Indicator*	Baseline Value	Target for [current year]	Value as on 30 th September [current year]

Role of Internal Quality Assurance Cell (IQAC) in academic audit and initiating quality assurance strategies and processes

Describes the college's placement cell activities, placement rate and salary statistics, and lists major employers and sectors of employment (disaggregated by gender and course studied). Profiles successful alumni and identifies emerging placement trends.

Activities of Placement Cell

S.no.	Name of the activity	Name of the Resource Person/ agency	Date & Duration
1	ROJGAR MELA	SOME PRIVATE & GOVT COMPANY	-

Placement Details

S.no.	No. of Students Selected	List of employers/companies	Salary Package
	NIL	NIL	NIL

Alumni Profile

S.no.	Name of Alumni	Employment status	Name of the organisation
	NIL	NIL	NIL

14. Innovations and Best Practices

The innovations done in the preceding years include setting up the Semester Cell to look after the C.C.E. exams and Project works and to submit their marks to the University on-line; setting up of a cell for differently abled students to look after their specific needs; teaching work done with a lot of audio-visual aids like projectors, visualizers, power point presentations; mass recital of the National Anthem and Madhya Pradesh state song during daily prayer by staff and students followed by thought of the day; Career Counseling Cell playing a more responsible role by organizing career related counseling and training programmes; Setting up N.R.C. (Network Resource Centre) to provide the staff and the students an exposure to computers and internet and the on-line services associated with it, making the senior students teach the juniors to impart teaching skill; On-line admission process, mass Surya Namaskar (Salutation to Sun) etc. In the library, the installation of SOUL software is an innovation that has led to improvement in library services.

Lays out the college's priorities and goals over the coming year. Describes key initiatives planned, what each initiative is expected to achieve, and how it will contribute to the college's long term development.

Key Initiatives Planned/ implemented

S. No	Head (administrative/ academic, etc)	Nature of proposal	Expected Outcome

17. Appendix: Institutional Performance Data and Financial Reports

Provides key data on the institution and its performance, including achievement against strategic plan targets and financial reports. This section is mandatory. All data fields must be completed, in the format and as per the instructions attached

Part II

Appendix: Institutional Performance Data and Financial Reports (all part II data kindly fill in attached excel sheet)

1. Sanctioned seats and enrolment

(a) Sanctioned Seats					
	SC	ST	Other Reserved Categories	General	Total
Undergraduate	76	343	152	13	584
Postgraduate	NIL	NIL	NIL	NIL	NIL
PhD	NIL	NIL	NIL	NIL	NIL

Data Source: AISHE

		Undergraduate			Postgraduate		PhD
		Year 1	Year 2	Year 3	Year 1	Year 2	
SC	Male	10	8	9	NIL	NIL	NIL
	Female	18	20	11	NIL	NIL	NIL
ST	Male	84	55	35	NIL	NIL	NIL
	Female	78	63	28	NIL	NIL	NIL
Other Reserved Categories	Male	30	35	14	NIL	NIL	NIL
	Female	26	33	14	NIL	NIL	NIL
General	Male	00	02	02	NIL	NIL	NIL
	Female	03	03	02	NIL	NIL	NIL
Total	Male				NIL	NIL	NIL
	Female				NIL	NIL	NIL

Data Source: AISHE

Number of sanctioned seats by discipline group and enrolment in the 1 st year as on September 30 th [current year]				
Discipline Group	Undergraduate		Postgraduate	
	Sanctioned Seats	Enrolment	Sanctioned Seats	Enrolment
Arts	316	316	NIL	NIL
Commerce	65	65	NIL	NIL
Criminology and Forensic Science	NIL	NIL	NIL	NIL
Cultural Studies	NIL	NIL	NIL	NIL
Defence Studies	NIL	NIL	NIL	NIL
Design	NIL	NIL	NIL	NIL
Disability Studies	NIL	NIL	NIL	NIL
Education	NIL	NIL	NIL	NIL
Fashion Technology	NIL	NIL	NIL	NIL
Fine Arts	NIL	NIL	NIL	NIL
Fisheries Science	NIL	NIL	NIL	NIL
Foreign Languages	NIL	NIL	NIL	NIL
Gandhian Studies	NIL	NIL	NIL	NIL
Home Science	NIL	NIL	NIL	NIL
Indian Languages	NIL	NIL	NIL	NIL
IT & Computer	NIL	NIL	NIL	NIL
Journalism and Mass Communication	NIL	NIL	NIL	NIL
Law	NIL	NIL	NIL	NIL
Library and Information Science	NIL	NIL	NIL	NIL
Linguistics	NIL	NIL	NIL	NIL
Management	NIL	NIL	NIL	NIL
Marine Science and Oceanography	NIL	NIL	NIL	NIL
Oriental Learning	NIL	NIL	NIL	NIL
Physical Education	NIL	NIL	NIL	NIL
Religious Studies	NIL	NIL	NIL	NIL
Science	203	203	NIL	NIL

Social Work	NIL	NIL	NIL	NIL
Women Studies	NIL	NIL	NIL	NIL

Data Source: AISHE

2. Transition and on-time graduation

(a) Transition from the 1st year to the 2nd year (Undergraduate)				
		Number of students admitted to the 1 st year in [the previous academic year] (*)	Of (*), the number of students currently enrolled in the 2 nd year who:	
			Passed all subjects in the 1 st year	Were Allowed to Keep Terms
SC	Male	10	10	-
	Female	18	18	-
ST	Male	84	84	-
	Female	78	78	-
Other Reserved Categories	Male	30	30	-
	Female	26	26	-
General	Male	00	00	-
	Female	03	03	-
Total	Male	124	124	-
	Female	125	125	-

Data Source: AISHE, examination results declared by [affiliating university/autonomous college]

(a) Transition from the 1st year to the 2nd year (Postgraduate)				
		Number of students admitted to the 1 st year in [the previous academic year] (*)	Of (*), the number of students currently enrolled in the 2 nd year who:	
			Passed all subjects in the 1 st year	Were Allowed to Keep Terms
SC	Male	NIL	NIL	NIL
	Female	NIL	NIL	NIL
ST	Male	NIL	NIL	NIL
	Female	NIL	NIL	NIL
Other Reserved Categories	Male	NIL	NIL	NIL
	Female	NIL	NIL	NIL
General	Male	NIL	NIL	NIL
	Female	NIL	NIL	NIL
Total	Male	NIL	NIL	NIL
	Female	NIL	NIL	NIL

Data Source: AISHE, examination results declared by [affiliating university/autonomous college]

(b) On-time graduation (Undergraduate)

		Number of students admitted to the 1 st year in [year t-3] (*)	who passed all final year examinations for the previous academic year
SC	Male	10	
	Female	18	
ST	Male	84	
	Female	78	
Other Reserved Categories	Male	30	
	Female	26	
General	Male	00	
	Female	03	
Total	Male	124	
	Female	125	

Data Source: AISHE, examination results declared by [affiliating university/autonomous college]

(b) On-time graduation (Postgraduate)			
		Number of students admitted to the 1 st year in [year t-2] (*)	Of (*), the number of students who passed all final year examinations the current year
SC	Male	<i>NIL</i>	<i>NIL</i>
	Female	<i>NIL</i>	<i>NIL</i>
ST	Male	<i>NIL</i>	<i>NIL</i>
	Female	<i>NIL</i>	<i>NIL</i>
Other Reserved Categories	Male	<i>NIL</i>	<i>NIL</i>
	Female	<i>NIL</i>	<i>NIL</i>
General	Male	<i>NIL</i>	<i>NIL</i>
	Female	<i>NIL</i>	<i>NIL</i>
Total	Male	<i>NIL</i>	<i>NIL</i>
	Female	<i>NIL</i>	<i>NIL</i>

Data Source: AISHE, examination results declared by [affiliating university/autonomous college]

3. Faculty and administrative staff in position and training

(a) Faculty and administrative staff in position as on 30 th September, [current year]						
Reserved						Unreserved
SC	ST	MP Residents	Females	Others		

Assistant Professor	Filled (Regular)	-					
	Filled (Contract)	-	-				
	Guest Lecturers	07	-	YES	04	01	02
Associate Professor	Sanctioned	-	-				
	Filled (Regular)	-	-	-	-	-	-
	Filled (Contract)	-	-	-	-	-	-
Professor	Guest Lecturers	-	-	-	-	-	-
	Sanctioned	-	-	-	-	-	-
	Filled (Regular)	01	-	-	-	-	01
	Filled (Contract)	-	-	-	-	-	-
Admin. Staff (all)	Guest Lecturers	-	-	-	-	-	-
	Sanctioned						
	Filled (Regular)	01	01	YES	01	00	01
Accountant	Filled (Contract)	-	-	-	-	-	-
	Sanctioned	-	-	-	-	-	1
	Filled (Regular)	-	-	-	-	-	-
	Filled (Contract)	-	-	-	-	-	-

Data Source: AISHE

(b) Training of faculty and administrative staff between October 1st [previous year] to September 30th [current year]				
		Leadership and management training	Training in the area of academic specialisation	Other training
Assistant Professor	Number trained	NIL	NIL	NIL
	Avg. number of days	NIL	NIL	NIL
Associate Professor	Number trained	NIL	NIL	NIL
	Avg. number of days	NIL	NIL	NIL
Professor	Number trained	NIL	NIL	NIL
	Avg. number of days	NIL	NIL	NIL
Administrative Staff (all)	Number trained	NIL	N/A	NIL
	Avg. number of days	NIL	N/A	NIL
Accountant	Number trained	NIL	N/A	NIL
	Avg. number of days	NIL	N/A	NIL

Data Source: Compiled from training certificates submitted by faculty/administrative staff

(c) Faculty qualifications as on 30th September, [Current Year]				
	PhD	Postgraduate	Undergraduate	Others

Assistant Professor	Contract	<i>NIL</i>	<i>NIL</i>	<i>NIL</i>	<i>NIL</i>
	Guest Lecturers	<i>02</i>	<i>06</i>		<i>01 M FHIL</i>
Associate Professor	Regular	<i>NIL</i>	<i>NIL</i>	<i>NIL</i>	<i>NIL</i>
	Contract	<i>NIL</i>	<i>NIL</i>	<i>NIL</i>	<i>NIL</i>
	Guest Lecturers	<i>NIL</i>	<i>NIL</i>	<i>NIL</i>	<i>NIL</i>
Professor	Regular	<i>01</i>	<i>NIL</i>	<i>NIL</i>	<i>NIL</i>
	Contract	<i>NIL</i>	<i>NIL</i>	<i>NIL</i>	<i>NIL</i>
	Guest Lecturers	<i>NIL</i>	<i>NIL</i>	<i>NIL</i>	<i>NIL</i>

Data Source: AISHE

(a) Financial support received (from all sources) by students in the college between October 1st [previous year] to September 30th [current year]

		Undergraduate		Postgraduate		PhD	
		Number	Average Value (Rs.)	Number	Average Value (Rs.)	Number	Average Value (Rs.)
SC	Male	10	20000	NIL	NIL	NIL	NIL
	Female	18	36000	NIL	NIL	NIL	NIL
ST	Male	84	168000	NIL	NIL	NIL	NIL
	Female	78	156000	NIL	NIL	NIL	NIL
General	Male	0	0	NIL	NIL	NIL	NIL
	Female	0	0	NIL	NIL	NIL	NIL
Total	Male	0	0	NIL	NIL	NIL	NIL
	Female	0	0	NIL	NIL	NIL	NIL

Data Source: AISHE

(a) Financial support received, from the DHE, by students in the college between October [previous year] to September 30th [current year]

		Undergraduate		Postgraduate		PhD	
		Number	Average Value (Rs.)	Number	Average Value (Rs.)	Number	Average Value (Rs.)
SC	Male	NIL	NIL	NIL	NIL	NIL	NIL
	Female	NIL	NIL	NIL	NIL	NIL	NIL
ST	Male	NIL	NIL	NIL	NIL	NIL	NIL
	Female	NIL	NIL	NIL	NIL	NIL	NIL
General	Male	NIL	NIL	NIL	NIL	NIL	NIL
	Female	NIL	NIL	NIL	NIL	NIL	NIL
Total	Male	NIL	NIL	NIL	NIL	NIL	NIL
	Female	NIL	NIL	NIL	NIL	NIL	NIL

Data Source: College records, DHE

(b) Hostel occupancy as on 30th September, [Current Year] (all hostels)

Capacity		Number of residents	
Males:			
Females:			
SC	Male	NIL	
	Female	NIL	
ST	Male	NIL	
	Female	NIL	
General	Male	NIL	
	Female	NIL	
Total	Male	NIL	
	Female	NIL	

Data Source: Hostel register verified against fee receipts on record

(c) Hostel occupancy as on 30th September, [Current Year]
(girls only hostels opened after _____)

SC	NIL
ST	NIL
General	NIL
Total	NIL

Data Source: Hostel register verified against fee receipts on recor

5. Examination Results

(a) Examination results for [previous academic year] (undergraduate)											
		SC		ST		Other Reserved Categories		General		Total	
		M	F	M	F	M	F	M	F	M	F
1 st year	Appeared	–	–	–	–	–	–	–	–	–	–
	1 st division	–	–	–	–	–	–	–	–	–	–
	2 nd Division	–	–	–	–	–	–	–	–	–	–
	3 rd Division	–	–	–	–	–	–	–	–	–	–
2 nd year	Appeared	–	–	–	–	–	–	–	–	–	–
	1 st division	–	–	–	–	–	–	–	–	–	–
	2 nd Division	–	–	–	–	–	–	–	–	–	–
	3 rd Division	–	–	–	–	–	–	–	–	–	–
3 rd year	Appeared	37	30	42	58	35	38	12	14	126	150
	1 st division	19	14	12	13	10	12	03	04	44	43
	2 nd Division	10	17	20	40	15	17	05	06	50	80
	3 rd Division	08	09	10	05	10	09	04	04	32	27

1 ST YEAR & 2ND YEAR RESULT NOT DECLARE

Data Source: AISHE, Examination results declared by [affiliating university/autonomous college]

(a) Examination results for [previous academic year] (postgraduate)

		SC		ST		Reserved Categories		General		Total	
		M	F	M	F	M	F	M	F	M	F
1st year	Appeared	NIL	NIL	NIL	NIL	NIL	NIL	NIL	NIL	NIL	NIL
	1 st division	NIL	NIL	NIL	NIL	NIL	NIL	NIL	NIL	NIL	NIL
	2 nd Division	NIL	NIL	NIL	NIL	NIL	NIL	NIL	NIL	NIL	NIL
	3 rd Division	NIL	NIL	NIL	NIL	NIL	NIL	NIL	NIL	NIL	NIL
2nd year	Appeared	NIL	NIL	NIL	NIL	NIL	NIL	NIL	NIL	NIL	NIL
	1 st division	NIL	NIL	NIL	NIL	NIL	NIL	NIL	NIL	NIL	NIL
	2 nd Division	NIL	NIL	NIL	NIL	NIL	NIL	NIL	NIL	NIL	NIL
	3 rd Division	NIL	NIL	NIL	NIL	NIL	NIL	NIL	NIL	NIL	NIL

Data Source: AISHE, Examination results declared by [affiliating university/autonomous college]

6. Placement and student tracking

(a) Placement and Tracking of Students who graduated in [previous academic year] (Undergraduate)						
		Number of students who graduated in [the previous academic year] (*)	+Of (*), the number of students who were successfully tracked and are:			
			Employed/ Self-employed	In education/ training	Unemployed	Not in the labour force
SC	Male	NIL	NIL	NIL	NIL	NIL
	Female	NIL	NIL	NIL	NIL	NIL
ST	Male	NIL	NIL	NIL	NIL	NIL
	Female	NIL	NIL	NIL	NIL	NIL
General	Male	NIL	NIL	NIL	NIL	NIL
	Female	NIL	NIL	NIL	NIL	NIL
Total	Male	NIL	NIL	NIL	NIL	NIL
	Female	NIL	NIL	NIL	NIL	NIL

Data Source: Records of the college placement cell

(b) Placement and Tracking of Students who graduated in [previous academic year] (Postgraduate)
--

		students who graduated in [the previous academic year] (*)	successfully tracked and are:			
			Employed/ Self-employed	In education/ training	Unemployed	Not in the labour force
SC	Male	<i>NIL</i>	<i>NIL</i>	<i>NIL</i>	<i>NIL</i>	<i>NIL</i>
	Female	<i>NIL</i>	<i>NIL</i>	<i>NIL</i>	<i>NIL</i>	<i>NIL</i>
ST	Male	<i>NIL</i>	<i>NIL</i>	<i>NIL</i>	<i>NIL</i>	<i>NIL</i>
	Female	<i>NIL</i>	<i>NIL</i>	<i>NIL</i>	<i>NIL</i>	<i>NIL</i>
General	Male	<i>NIL</i>	<i>NIL</i>	<i>NIL</i>	<i>NIL</i>	<i>NIL</i>
	Female	<i>NIL</i>	<i>NIL</i>	<i>NIL</i>	<i>NIL</i>	<i>NIL</i>
Total	Male	<i>NIL</i>	<i>NIL</i>	<i>NIL</i>	<i>NIL</i>	<i>NIL</i>
	Female	<i>NIL</i>	<i>NIL</i>	<i>NIL</i>	<i>NIL</i>	<i>NIL</i>

Data Source: Records of the college placement cell

7. PhDs Awarded

Number of PhDs awarded between October 1 st [previous year] to September 30 th [current year]	
Discipline Group	Number
Arts	<i>NIL</i>
Commerce	<i>NIL</i>
Criminology and Forensic Science	<i>NIL</i>
Cultural Studies	<i>NIL</i>
Defence Studies	<i>NIL</i>
Design	<i>NIL</i>
Disability Studies	<i>NIL</i>
Education	<i>NIL</i>
Fashion Technology	<i>NIL</i>
Fine Arts	<i>NIL</i>
Fisheries Science	<i>NIL</i>
Foreign Languages	<i>NIL</i>
Gandhian Studies	<i>NIL</i>
Home Science	<i>NIL</i>
Indian Languages	<i>NIL</i>
IT & Computer	<i>NIL</i>
Journalism and Mass Communication	<i>NIL</i>
Law	<i>NIL</i>
Library and Information Science	<i>NIL</i>
Linguistics	<i>NIL</i>
Management	<i>NIL</i>
Marine Science and Oceanography	<i>NIL</i>
Oriental Learning	<i>NIL</i>
Physical Education	<i>NIL</i>
Religious Studies	<i>NIL</i>
Science	<i>NIL</i>

Social Work	NIL
Women Studies	NIL
Literature	NIL
Other	NIL
All disciplines	NIL

Data Source: AISHE

8. Research and consultancy

Revenue generated through externally funded research and consultancies over [previous financial year]		
Discipline Group	Number of active projects	Total Revenue Generated (Rs. lakhs)
Arts	NIL	NIL
Commerce	NIL	NIL
Criminology and Forensic Science	NIL	NIL
Cultural Studies	NIL	NIL
Defence Studies	NIL	NIL
Design	NIL	NIL
Disability Studies	NIL	NIL
Education	NIL	NIL
Fashion Technology	NIL	NIL
Fine Arts	NIL	NIL
Fisheries Science	NIL	NIL
Foreign Languages	NIL	NIL
Gandhian Studies	NIL	NIL
Home Science	NIL	NIL
Indian Languages	NIL	NIL
IT & Computer	NIL	NIL
Journalism and Mass Communication	NIL	NIL
Law	NIL	NIL
Library and Information Science	NIL	NIL
Linguistics	NIL	NIL
Management	NIL	NIL
Marine Science and Oceanography	NIL	NIL
Oriental Learning	NIL	NIL
Others / Inter-disciplinary	NIL	NIL
Physical Education	NIL	NIL
Religious Studies	NIL	NIL
Science	NIL	NIL
Social Science	NIL	NIL
Social Work	NIL	NIL
Veterinary and Animal Sciences	NIL	NIL
Women Studies	NIL	NIL
All disciplines	NIL	NIL

Number of papers published in peer-reviewed journals between October 1st [previous year] to September 30th [current year]

Discipline Group	Number of papers published		Number of published papers through cross-institute research collaboration
	International Journals	National Journals	
Arts	NIL	02	NIL
Commerce	NIL	NIL	NIL
Criminology and Forensic Science	NIL	NIL	NIL
Cultural Studies	NIL	NIL	NIL
Defence Studies	NIL	NIL	NIL
Design	NIL	NIL	NIL
Disability Studies	NIL	NIL	NIL
Education	NIL	NIL	NIL
Fashion Technology	NIL	NIL	NIL
Fine Arts	NIL	NIL	NIL
Fisheries Science	NIL	NIL	NIL
Foreign Languages	NIL	NIL	NIL
Gandhian Studies	NIL	NIL	NIL
Home Science	NIL	NIL	NIL
Indian Languages	NIL	NIL	NIL
IT & Computer	NIL	NIL	NIL
Journalism and Mass Communication	NIL	NIL	NIL
Law	NIL	NIL	NIL
Library and Information Science	NIL	NIL	NIL
Linguistics	NIL	NIL	NIL
Management	NIL	NIL	NIL
Marine Science and Oceanography	NIL	NIL	NIL
Oriental Learning	NIL	NIL	NIL
Others / Inter-disciplinary	NIL	NIL	NIL
Physical Education	NIL	NIL	NIL
Religious Studies	NIL	NIL	NIL
Science	NIL	NIL	NIL
Social Science	NIL	NIL	NIL
Social Work	NIL	NIL	NIL
Women Studies	NIL	NIL	NIL
All disciplines	NIL	NIL	NIL

Date Source: College records based on published papers submitted by faculty

9. NAAC accreditation and UGC autonomy

	Date of Application (LOI & SSR)	Date on which accreditation was received	Grade	Valid till

1 st Cycle	NIL	NIL	NIL	NIL
2 nd Cycle	NIL	NIL	NIL	NIL
3 rd Cycle	NIL	NIL	NIL	NIL

Date of submission of the Annual Quality Assurance Report for the current year: _____.

Does the college have currently valid UGC autonomy? _____. If yes, by order number _____, dated _____.

10. Institutional Trends

Variable	Baseline Value	[Year 1]	[Year 2]	[Year 3]	[Year 4]	Current Year
Percentage of sanctioned seats in the 1 st year filled (undergraduate, all categories)	-	255	123	100	-	584
Percentage of sanctioned seats in the 1 st year filled (postgraduate, all categories)	NIL	NIL	NIL	NIL	NIL	NIL
Transition rate from the 1 st year to the 2 nd year (undergraduate, all categories)	NIL	NIL	NIL	NIL	NIL	NIL
On-time graduation rate (undergraduate, all categories)	NIL	NIL	NIL	NIL	NIL	NIL
Transition rate from the 1 st year to the 2 nd year (post graduate, all categories)	NIL	NIL	NIL	NIL	NIL	NIL
On-time graduation rate (postgraduate, all categories)	NIL	NIL	NIL	NIL	NIL	NIL
Regular faculty in position rate (all levels, reserved categories)	NIL	NIL	NIL	NIL	NIL	NIL
Regular faculty in position rate (all levels, unreserved categories)	NIL	NIL	NIL	NIL	NIL	NIL
Percentage of regular faculty with PhDs (all levels)	NIL	NIL	NIL	NIL	NIL	NIL
Employment rate of graduates from the previous academic year (undergraduate, all categories)	NIL	NIL	NIL	NIL	NIL	NIL
Employment rate of graduates from the previous academic year (postgraduate, all categories)	NIL	NIL	NIL	NIL	NIL	NIL

generated through externally funded research						
Number of papers published in peer-reviewed, international journals	NIL	NIL	NIL	NIL	NIL	NIL

Source: Tables under section 1-8.

11. Financial Reports

Name and registration number of the auditor AMAN AGRAWAL CA ITARSI

Number of audit observations recorded by the auditor _____.

Number of audit responses found satisfactory, as certified by the project directorate _____.

Certified audit reports as per the standard Chart of Accounts to be attached.

12. All India Survey of Higher Education

Date on which all applicable fields of the Data Collection Format for the All India Survey of Higher Education were completed and submitted _____

Instructions

- All data is to be reported as on 30th September of the current year.
- Postgraduate courses refer to courses at the Masters and MPhil level.
- The number of sanctioned seats is the number of students the college is authorized, by the UGC/DHE/affiliating University, to admit in the first year of its degree programs.
- The number of sanctioned faculty posts is the number of faculty the college is authorized, by the UGC/DHE/affiliating University, to recruit on a full-time basis.
- Enrolment is defined as the number of students who have paid their admission fees for joining a degree program by September 30 of the respective academic year.
- Admission is defined as the number of students who have paid their admission fees for joining a degree program, in the first year, by September 30 of the respective academic year and who have never been enrolled in that degree program previously.
- Other Reserved Categories include all categories of students (for e.g. sports quota, extracurricular quota, residents of Jammu and Kashmir etc.) for whom a fixed percentage of sanctioned seats are reserved.
- Examination results are to be reported for examinations held in the previous academic year, and the results for which were declared by 30th September of the current year.
- Allowed to keep terms refers to students who did not pass all subjects in the previous year but were allowed to transition to the next year of their respective degree programs.
- Regular faculty refers to faculty employed on open-ended, full-time contracts as per UGC norms.

UGC norms.

- Guest Lecturers refers to faculty employed on a per lecture or per day basis as per UGC norms.
- Data on scholarships is to be reported on all scholarships awarded between 1st October of the previous year and 30th September of the current year.
- A hostel seat is considered occupied if a student has been allotted a seat in the hostel and the student, to whom the seat was allotted, has paid the hostel fee for the current academic year.
- Examination results refers to the average score obtained by a student, in the respective academic year, across all exams that are used to assess whether the student has met the requirement of the degree program in which he/she is enrolled.
- Student tracking refers to having up to date contact information (mobile phone and/or email address) and status (employment, unemployed, in formal education or training, not in the labour market/other) for each student for up to six from the end of the academic year when the student passed out (graduated).
- Externally funded research and consultancies refer to research and/or development funded through consultancy contracts or partnerships with a sponsor or purchaser who is external to the institution.
- A peer-reviewed journal is one that subjects an author's research to review and evaluation by others who are experts in the same field, before the research is published.
- An international journal is one that has an International Standard Serial Number (ISSN) issued by the ISSN International Centre.
- A paper is said to be published through cross-institute research collaboration if the primary affiliation of at least two authors is to different colleges/institutions.
- The institutional performance indicators common across all institutions can be found in the PIP. Institution-specific performance indicators can be found in the MOU signed between the Institution and the Department of Higher Education.
- The standard Chart of Accounts refers to the standard format for audit reports as notified by the Department of Higher Education through its orders.

[DR.SHEELA THAKUR]
Reporting In charge
GOVT COLLEGE SUKHTAWA

[DR.B.D.KHATARKAR]
PRINCIPAL
GOVT COLLEGE SUKHTAWA