

**GOVT SCIENCE COLLEGE,  
PANDHURNA DIST.CHHINDWARA (M.P.)**  
{ACCREDITED By NAAC “B” Dt. 16 September 2016}

**ANNUAL REPORT**  
**2017-2018**

Submitted to

**DEPARTMENT OF HIGHER EDUCATION  
BHOPAL (M.P.)**

**PRINCIPAL  
Prof. D.S. BIEN  
Govt. Science College  
Pandhurna**

---

***GOVT SCIENCE COLLEGE, PANDHURNA  
Dist. CHHINDWARA (M.P.)***

# ANNUAL REPORT

YEAR - 2017-18

This format outlines the annual reports to be published by all colleges in the Madhya Pradesh on their websites, by October 31<sup>st</sup> of each year. Part I is intended as a guide and colleges are free to alter the contents and format as they see fit. Part II, the Appendix (Institutional Performance Data and Financial Reports), is mandatory and colleges are required to report all data as per the attached format and instructions.

## Important Information –

- **Name of the college - Govt. Science College Pandhurna**
- **Place of the college - Pandhurna**
  
- **District - Chhindwara**
- **Division – Jabalpur**
  
- **Year of establishment of college – 24/10/1986**
  
- **Name of Principal – Prof. D. S. BISEN**  
**Principal, Govt. Science College, Pandhurna (M.P.)**
  
- Mail id of Principal – hegcpanchi@mp.gov.in, dbisen61@gmail.com**
  
- Phone No. - 07164- 220338, 220339**
  
- Reporting In charge – Dr. Shahnaz Khan, Professor English**  
**Mail ID shahnazkhanngp@gmail.com**  
**Phone – 09511747056**
  
- **Date of report submission - 23/07/18**

## Part I

- 1. The Principal's Report** - Highlights the key activities, events, and successes of the past year and briefly describes major new initiatives to be undertaken over the next year.

I joined the institute on 3 Nov 2003 and ever since then I did not look back and took up the journey of uplifting and upgrading the college at its academic and infrastructure level. Apart from the regular funds I was also able to generate funds from other sources and agencies to meet out the extra expenditure. I paved my way persistently to provide all sorts of amenities to the students flocking from the near by tribal area.

College avails e-governance and administration. WIFI campus, college under surveillance of CCTV camera, ramp, Big library, well equipped science labs, 10 Acre Play ground, , tally software in office, common room, clean toilets with adequate supply of water drainage and vending machines are some of our epithets.

Apart from the regular units of Boys & Girls NSS, Personality development cell, under my guidance a unit 'Seva Bane Swabhava' has been set up to inculcate the basic emotion 'Love' in the student. Love – that state of full functioning, glowing, relatedness - is the single great reward of living. The unit works on the below lines.

“सर्वे भवन्तु सुखिनः, सर्वे सन्तु निरामया,  
सर्वे भद्राणि पश्यन्तु, मा काश्चित् दुःख भाग भवेत् ।।”

“We are what we learn”.

Innovations in teaching and learning were introduced with a view to enhance the quality in education. 7 smart classes were introduced to make the teaching easy and less time consuming unlike the conventional chalk duster method.

I focus on new ideas, new ways of thinking of understanding different perspectives and not on merely reading and regurgitating the material but to think critically. I want the progress of college linked to progress of society leading to future generations and therefore I focus on upgrading the library, a vital sub unit which integrates itself with overall education. For a high tech learning environment, INFLIBNET, and e-resources were introduced yet I still have other advanced plans to be implemented in the near future as libraries have crucial role in the process of institutional accreditation.

Apart from substantial infrastructure and other amenities I want to create an atmosphere in the college where essentials of life are continually explored, felt and emphasized. It would be places in future where people come reconnect with their

deepest selves, to re-experience their deepest feelings, to dissolve constricting patterns and to renew the kind of inner direction, vitality, joy and commitment that make life worth while.

**New Initiatives taken by me –**

- \* To renovate, repair, and revamp the New building adjacent extended classrooms and Labs.
- \* To open M.Sc. PG classes in the New Building with good infrastructure.
- \* To promote quality and excellence in higher education.
- \* To introduce innovative methods of pedagogy and enhance collegiality on the campus.
- \* To make higher education more relevant to social and economic needs.
- \* To ensure the adequacy, maintenance and functioning of the support structure.
- \* To use higher education as the production of qualified human resources.

**Future key points –**

- \* To sustain quality in education
- \* To promote quality and excellence in Higher Education.
- \* To enhance collegiality on the campus.
- \* To introduce innovative methods of pedagogy.
- \* To give the institution a new sense of direction and identity.
- \* To institutionalize good practices.
- \* Ensure the adequacy, maintenance and functioning of the support structure.
- \* Optimize and integrate the modern methods of teaching and learning.
- \* Making higher education more relevant to social and economic needs.
- \* Higher Education as the production of qualified human resources.
- \* Is focussing on as how to convert a learner into human capital.

**2. Overview**

(i) Vision, Mission and Objectives of the college

**Vision :**

To be recognized as a centre of excellence providing quality education and uplifting the status of women in society and converting them into human capital.

**Mission :**

- To develop creativity amongst the students through scholastic and non-scholastic programs
- To build a national character with multifaceted personality in order to ensure a healthy society
- To promote value based quality education and various skill based programs for developing a self-reliant woman.
- To develop a personality with mental and physical fitness by bringing out their inherent talents, and ensuring spiritual awareness in them.

**Objectives :**

To impart education exclusively to the Boys & Girls students and ensure holistic development to the less privileged section of the rural areas especially the tribal area including the SC, ST, OBC and General category.

A persistent commitment is observed to impart education to the increasing number of students each year. "Knowledge is power" as nothing is more sacred than the quotation with an aim to liberate the individual from the shackles of ignorance. We make a conscious effort to impart an education of head and heart to the learners' perseverance and to some extent of hand to the learners. We try to groom the students to evolve into responsible citizens and orient students to their social responsibilities through various co-curricular and extra-curricular forums such as NSS and Women cell, Sewa Bane Swabhava club, Socio cell.

- (ii) Brief introduction of the college (including the status (Govt. / Lead/ Constituent/ Affiliated/ Private), Parent University, UGC recognition, CPE status, etc), location & campus area

The college is situated in an aesthetic natural surroundings of Pandhurna known for its forest and ST tribes and Tribe culture. Some nature reformers and politicians brought into the existence of a co-ed college situated in our double story New building with arts, science and commerce faculties . Later the arts B.A & M.A faculties of this co-ed college were run out to a Jawahar School building in Pandhurna city. Since the genesis of this govt. college it had been affiliated to formerly **Dr. H. S. Gour University, Sagar** till last year and there onwards it is in the affiliated to **Rani Durgawati University, Jabalpur**. It is a UGC **2(f) & 12 (b)** from recognized institution.

- (iii) History of the college with significant milestones

Established in the year 1986, this college was christened as **Govt. Science College** with a few subjects as B.Sc, Physics , Chemistry., Maths, Zoology, Botany, Hindi, English . In the Arts faculty Economics, Sociology, Geography, Hindi, English with approx 164 students in the old college building.

Slowly and gradually the college metamorphosed into an institution which today offers teaching in 10 post graduate subjects and caters to the academic need of the students flocking from the SC, ST, OBC background in general.

The college was accredited 'B' by the NAAC in 2016 year. It was certainly a journey towards progression in its options – a continuous journey towards excellence through innovative ideas and methodology. Since first accreditation there has been a constant gradual increase in number of students that the strength today is 1032. The college is solely focusing on the development of the infrastructure and is determined to an academic deliverance on the NAAC guidelines. Therefore, to an extent the college augments its resources through utilization of UGC grant, Govt. fund and Janbhagidari fund, Zilla Yojana.

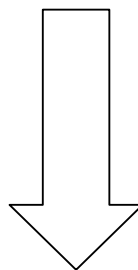
(iv) Faculties and major disciplines

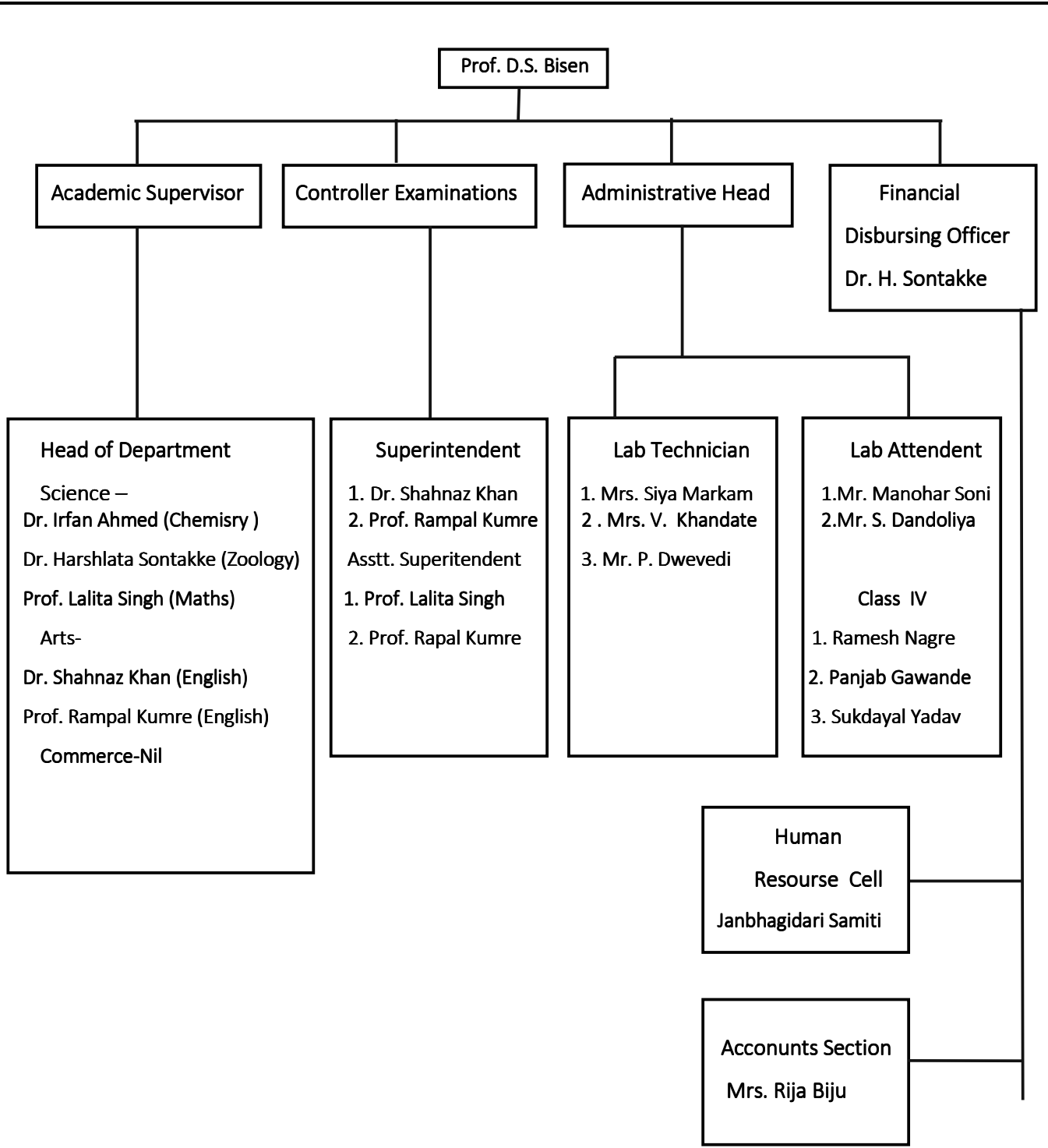
- Arts Faculty, P.G. in 10 Subjects.
- Science Faculty , P.G in 04 Subject
- Commerce Faculty U.G , & P.G. in Management and Accounting.

### **3. Senior Management Team and Board of Governors**

Lists the members of the senior management team (Principal, Registrar, Deans etc.) and members of the Board of Governors including their designations and professional backgrounds.

#### **Administrative Hierarchy**





#### 4. Admission Statistics

- The number of applicants at the UG and PG level who ranked the college as their 1<sup>st</sup>, 2<sup>nd</sup> and 3<sup>rd</sup> preference, the number of applications received for PhD courses, and the number of students admitted at each level as per the following format.

<b>Applications</b>	<b>UG</b>	<b>PG</b>	<b>PhD</b>
Applications that ranked the college as the 1 <sup>st</sup> preference	<b>324</b>	<b>206</b>	NA
Applications that ranked the college as the 2 <sup>nd</sup> preference	<b>270</b>	<b>100</b>	
Applications that ranked the college as the 3 <sup>rd</sup> preference	<b>232</b>	<b>0</b>	
Total number of applications received	<b>851</b>	<b>319</b>	
Number of students admitted	<b>826</b>	<b>306</b>	

Data Source: E-pravesh portal, records of the affiliating university

- A brief demographic profile of students is admitted (in terms of gender, caste, whether from MP etc.)

Name of the Course	Gender	Category	% of students from the State	% of students from other states
B.A.	Male & Female	All	100%	-
B.Sc.	Male & Female	All	100%	-
B.COM.	Male & Female	All	100%	-
M.A.	Male & Female	All	100%	-

#### 5. Academic Programs: Core Programs - UG & PG

##### Core programs at UG level

<b>Stream</b>	<b>Name of the Core Program</b>	<b>Eligibility</b>	<b>Optional subjects</b>
Arts	Bachelor of Arts	10+2 from a recognized Board OR 10+2 with relevant vocational course from M.P. Board	Foundation course + a group of 3 optional subjects
Commerce	Bachelor of Commerce	10+2 from a recognized Board OR 10+2 with relevant vocational course from M.P. Board	Foundation course + a group of 3 subjects (2 Compulsory and 1 optional)
Science (Maths)	Bachelor of Science (Maths)	10+2 from a recognized Board OR 10+2 with relevant vocational course from M.P. Board	Foundation course + a group of 3 subjects (2 Compulsory and 1 optional)
Science (Bio)	Bachelor of Science (Bio)	10+2 from a recognized Board OR 10+2 with relevant vocational course from M.P. Board	Foundation course + a group of 3 subjects (2 Compulsory and 1 optional)



**Core Options at PG level**

<b>Faculty</b>	<b>Name of the Core Program</b>	<b>Eligibility</b>	<b>Subject Options</b>
Arts	Master of Arts	3 year Degree course in any faculty/ Honours degree course in same subject	English, Hindi , Economics, Sociology, Geography
Commerce	Master of Commerce	3 year Degree course in same subject	Management, Accounting

**M.Phil/ Ph.D. Programs**

<b>S.No.</b>	<b>Subject</b>	<b>Eligibility</b>	<b>No. of scholars registered</b>
NIL	NIL	NIL	NIL

**UG/ PG Diploma/ Diploma/ Certificate/ Self-financed/ Skill based Vocational/ Short term courses**

<b>Name of the Course</b>	<b>Department</b>	<b>Duration</b>	<b>Fees</b>	<b>Seats</b>
Computer Application	Computer	3 years	7000 Per Years	B.A. Computer - 40 B.Com Computer - 45 B.Sc. Computer - 115

**6. Academic Calendar -**

<b>Academic Work</b>	<b>First Year / Second Year / Fifth Semester</b>	<b>Sixth Semester</b>
Orientation Classes/Zero Classes/SWOT analysis	July	December
Teaching and Continuous Comprehensive Evaluation	Third week in September	Second week in March

CCE Schedule	Schedule is decided by the Semester Cell	Schedule is decided by the Semester Cell
Preparation Leave	02 November to 09 November (07 Days)	19 April to 21 April (03 Days)
Practical Exams (Graduation/Post Graduation)	Between 23 <sup>rd</sup> October to 09 <sup>th</sup> November	Between 02 <sup>nd</sup> April to 18 <sup>th</sup> April
Semester and ATKT Exams	May – June	November – December
Declaration of Examination Results	Up to university Within two months	Up to university Within two months
Semester Break (for students)	15 <sup>th</sup> December to 23 <sup>rd</sup> December	28 <sup>th</sup> May to 30 <sup>th</sup> June
Semester Break (for teachers)	15 <sup>th</sup> December to 23 <sup>rd</sup> December	28 <sup>th</sup> May to 15 <sup>th</sup> June

## 7. The Student Experience

Briefly describes student life in the college:

- Infrastructural facilities available to students - Classrooms, Smart classrooms, laboratories and equipment, Garden; Students common room, Sports ground & other facilities

There exists a health cell which provides general check up randomly and counselling to the students from the physicians – 64% of students receive financial assistance from state govt., central govt. and other national agencies. Cross ventilated well lighted classrooms, ramp, 1 Virtual Class, 7 smart class rooms, well equipped laboratories, common room, pure clean drinking water, 04 toilets are some of the facilities availed by the students. Garden with herbs, shrubs, ornamental plants and trees add to the ambience of the college.

- Library as a learning resource- advisory committee, its composition, facilities & services (e & print), annual improvement initiatives

The advisory committee of the library is headed by the librarian. Its composition involves usually senior teachers.

1. **Prof. Rampal Kumre** (in-charge library)
2. Dr. Harshalata Sontakke
3. Dr. Shahnaz Khan
4. Prof. Lalita Singh
  - \* Area for browsing, reading room, computers with net facility, photocopier
  - \* Book Bank and free stationary for SC/ST Students.
  - \* Journals and Books
  - \* newspapers
  - \* Health magazines, employment news, journals and references are some of its features
  - \* INFLIBNET

The advisory committee along with the head of the institution formulates policies for improvement considering the suggestions of the readers (both students & staff members).

- Student support services:

- ✓ IT enabled services

Library houses IT zone for accessing e-resources. The college has 85 number of systems with latest configurations LAN facility is available in computer application department, NRC and office. Printers and Scanners are connected with LAN. WIFI facility and software are available college aims at acquiring in computer departments. In future the institute is committed to provide stand alone facility.

- ✓ Financial assistance (scholarships/ schemes for SC/ST/OBC/ minority,

Group & Health Insurance Schemes)

- Post metric scholarship for SC/ST/OBC students
- Gaon ki Beti
- Awagaman Yojana
- Pratibha Kiran Yojana
- Grah Awas yojana

- ✓ Personal enhancement & development schemes- NSS, Facilities for physically challenged & slow learners; Tutor-Guardian Scheme, Grievance Redressal Cell, Entrepreneurship Cell, Remedial classes, Career Guidance Cell.

Apart from NSS, Remedial Classes, Entrepreneurship Cell, Career Guidance Cell, Personality Development Cell, Environment Consciousness Cell is persistently working towards the overall development of the individual.

सर्वे भवन्तु सुखिनः सर्वे सन्तु निरामया

This cell initiates the habit of sharing, contentment, pity, compassion, human values and above all the internal self development. It helps build a stronger 'You' and helps the needy and the poor. The magnitude of work done is evidence of success. Ramp facility is present for physically challenged students. Remedial classes are run for slow and poor learners. Two boxes are fixed in the college campus for grievance redressal. Vivekanand Career Guidance Cell has organized Rojgar Mela, skill development programs in order to let the students stand on their feet.

- ✓ Extracurricular activities: Calendar of activities (Sports, Youth Festival, cultural and literary events), Achievements, Awards

The college ensures adequate availability of physical infrastructure and ensure its optimal utilization in effective teaching and learning and extra curricular activities.

**Youth Festival** – Every year youth festival organized by the college at District level. Cultural events, involving dance, drama, singing, literary events like debate, essay writing, poetry writing, poem, parity, rangoli and many other activities take place during the annual functions.

**Annual Function** - Every end of the year annual function is organized for the students. This annual function spread over 3 days. The first day involves activities relating to arts and crafts. Literary event involves speech competition, recital, debate competition, essay writing competition, creative writing etc. Sports and games activities are organized on this very day and maximum participation of students is ensured. The 2<sup>nd</sup> day involves performing arts events, for ex. Dance, Drama, One Act Plays, Mimicry, and Skit. The last but not the least the third day is a celebration where prize distribution and At Home takes place.

- ✓ Major student welfare initiatives over the past year
  - Remedial Coaching is provided to the students who are at risk of failure and drop out.
  - Physically Handicapped are benefited
  - Gaon ki Beti – scholarship/ Pratibha kiran Yojana
  - Post Metric Scholarship (SC, ST, OBC)
  - Grievance cell, health care unit, red cross cell are actively working in the respective fields.

- Support and guidance provided to the students in preparing for the competitive exams.
  - Book bank and stationary scheme for SC, ST students
  - CM Helpline
- Extension Activities
    - Camps are organized by NSS on the out skirts to create social, political and scientific awareness. Ex Swacchata Abhiyan, College Chalo Abhiyan, Beti Bachao Beti Padhao etc.
    - All the more other academic departments too are active towards helping the poor and needy in the near by vicinity by donating them the needful
    - Health fare was organized last year for a free check up of the nearby community of the college.

## 8. Student Achievements

Highlights the most significant academic and non-academic achievements of students over the past year. This can include major academic awards and scholarships received student, and sports and other extracurricular activities. Focuses, in particular, on profiling top achievers and describing how resources provided by the college helped these students succeed.

### ACADEMIC

Internet facility is provided to the students in the library. Extra classes and referential material is arranged for them. Govt. has distributed mobile phones which inturn are used by the students to access knowledge. Physical Education department provides sports kit and free coaching in certain sports.

- Merit

S.no	Name of the award/ medal/ meritorious scholarship	Name of the recipient	Class	Area of achievement
1	Highest Percentage	Exam. to be conducted in March -2018 Result Awaited	B.Sc. I Year	Science
2	Highest Percentage	Exam. to be conducted in March -2018 Result Awaited	B.Com. I Year	Commerce
3	Highest Percentage	Exam. to be conducted in May-2018 Result	B.Com. VI Sem	Commerce

		Awaited		
4	Highest Percentage	Exam. to be conducted in March-2018	B.A. I Year	Arts
5	Highest Percentage	Exam. to be conducted in May-2018	B.A. VI Sem	Arts
6	Highest Percentage	Exam. to be conducted in May-2018	B.Sc. VI Sem	Science

- **Research scholarship/ award**

S.no	Name of the scholarship award/	Name of the recipient	Class	Area of research
-	Nil	Nil	Nil	Nil

### CULTURAL

- **Participation**

S.no	Name of the event	District Level	State Level	University	National Level
1	Classical Solo (Youth Festival)	1 <sup>st</sup>	-	01	-

- **Awards and Achievements**

Name of the student	Class	Event	Award/Achievement
Nil	Nil	Nil	Nil

### SPORTS

- **Participation**

S.no	Name of the event	Division Level	State Level	University/ National Level	International Level
1	Cricket	07	-	-	-
2	Badminton	02	-	-	-
3	Volleyball	04	-	-	-
4	Kho-Kho	06	-	-	-

- **Awards and Achievements**

Name of the student	Class	Sport	Award/Achievement
-	-	-	-

### 9. Research Activities

Identifies major research themes, places these themes in their social and economic context, highlights major research achievements (publications, collaborations, intellectual property produced, external funding received etc.), and profiles top researchers. Lays out the research agenda and identifies themes for the coming year.

- **Major research themes**

S. No.	Department	Prioritized research area and expertise	Social/ economic context
1	<i>Nil</i>	<i>Nil</i>	<i>Nil</i>

- **Major/Minor research projects**

S. No	Name of the Faculty	Year	Title of the project	Name of funding Agency/ Industry	Total grant received
1	-	-	-	--	-

- **Papers presented in regional, national and international seminars/ conferences**

S. No.	Name of the faculty	Regional/ State	National	International
1	Prof. D.S. Bisen	-	-	-
2	Dr. Harshalata Sontakke	-	-	-
3	Dr. Shahnaz Khan	-	-	-

### Publication in National / International Journals

S.no.	Name of Faculty	Title of research publications in peer reviewed journals	National	International	Name of Journal and their impact factor of publication reported	ISSN/ISBN Number
1	Prof. D.S. Bisen Principal	<b>Role of Teachers in Progressive Society to deal with diverse learners in inclusive classrooms</b>	Nil	1	<b>3.578</b>	<b>2239:2054</b>
2	Dr. Harshlata Sontakke, HOD Zoology	<b>Nil</b>	Nil	Nil	Nil	Nil
3	Dr. Shahnaz Khan	<b>The Inner Self in The Essential Rumi</b>	1	Nil	<b>5.011</b>	<b>2394:5303</b>
		<b>The issue of Immigrant identity in Jasmine</b>	1	Nil	<b>5.131</b>	<b>2319:9318</b>

- **List of linkages/ Collaborations/ MOUs**

- \* Collaboration with NIIT Foundation – 2017
- \* Collaboration with Infflibnet Centre – 2017.
- \* Collaboration with FDDI & ATDC Centre – 2017.
- \* **MOU with RUSA on 14.6.18**

- **College Publications: Research Journal, Magazine, Newsletter**

- College Magazine “Drushti” is published every year enhancing the talent of writing among students.
- News letters is published every three month.

#### 10. Human Resources

Highlights senior faculty and administrative appointments. Describes what new areas of activity (new courses, research areas, extracurricular activities etc.) and administrative improvements are enabled by these appointments.

#### 1. Faculty and Administrative appointments: Teaching and Non-teaching



Positions	Teaching Faculty				Non Teaching Faculty	Technical Staff
	Prof	Promoted Prof	Assistant Prof	Guest Faculty		
Sanctioned by UGC/ University/ State Govt -						
Sanction	-	-	23	14	17	16
Filled	-	-	6	14	3	3
Sanctioned by Management/ Janbhagidari Samiti/ Other authority	-	-	-	17	5	-
Filled	-	-	-	17 (JBS)	05 (JBS)	-

## 2. Guest Faculty: subject-wise appointments

S.no.	Name of the Guest Faculty	Qualification	Subject
1	Dr. Kishor Paradkar	Ph.D., M.Sc.	Chemistry
2	Dr. Vikas Sharma	Ph.D., M.Sc.	Botany
3	Shri Pajendra Raghuvanshi	M.Phil M.,Sc.	Maths
4	Dr. Shakir Diwan	Ph.D., M.Com	Commerce
5	Dr. Sharda Kaushik	Ph.D., M.A.	Hindi
6	Dr. Anjana Rathod	Ph.D., M.A.	Hindi
7	Shri Umesh Salvanshi	NET, M.A,	Sociology
8	Shri Umesh Kurwade	M.A. MPhil	Geography
9	Shri Satish Bagde	NET M.Lib.	Librarian
10	Shri Rahul Soni	M.Sc.	Botany
11	Soni Ram Thakre	M.Phil. M.Com	Commerce
12	Bharti Kapoor	M.Phil. M.Com	Commerce
13	Ku- Indu Tandekar	M.A Economics	Economics
14	Ku. Shivani Soni	M.Sc. Zoology	Zoology

## 3. Annual improvement in academic, research & administrative Initiatives

1. Exam results have been improved from the last year
2. Students are using e-resources to gather knowledge.
3. Teachers are promoted to write Project and students are motivated to present papers.
4. Disciplined environment is introduced through strict administration.

5. Administrative initiatives are timely taken and observed strictly.
6. Annual improvement through refresher course, orientation course, workshop.

## 11. Events and Initiatives

Describes major events including seminars, conferences, competitions, student study trips etc. Focuses on what was achieved and learned, and how the college will follow up.

Describes significant academic, administrative, student support, and other initiatives over the past year. The description of each initiative will be structured around the need for the initiative, how it was designed, what resources were used, what results were achieved, and which features of the initiative drove success.

1. Commerce department took a study tour to FDDI
2. Lectures on Environment Day, Women's Day were organized.
3. Fund was raised by the students who sold hand made candles, handicrafts, artefacts, at a fare in college.
4. Zoology department took an educational tour to Pachmadhi and Pench National park.
5. Sociology department tour MA students to museum and Jail (Prison)
6. A seminar on GST and N.S.E. was organized
7. Bank coaching was arranged by Commerce Department
8. Spoken English workshop was conducting.
9. Hindustan Liver Ltd were visited by Science students.
10. Picnic was arranged at Tamia for its Botanical importance.

## 12. Institutional Development plan

Describes the college's activities over the past year under different schemes, discusses performance against strategic/institutional development plans and commitments over the previous year.

Indicator*	Baseline Value	Target for [current year]	Value as on 15 <sup>th</sup> September 2016 [ Previous year]
	Preparation of NAAC	To Introduce Solar Distillation plant	NAAC Accreditation done and got the grade B
	Proposal of Seminars	To develop Water harvesting system	
	Computer Tanning Programme &	To Conduct environmental awareness	

	Internet Connection	programme	
	Smart Classes	To develop 02 ramp for Physically challenged students	01 no. Ramp Constructed for Physically challenged students
	Renovation of Building /Principal Chambers		
	Reconstruction Girls Toilets		

**Role of Internal Quality Assurance Cell (IQAC) in academic audit and initiating quality assurance strategies and processes**

The task of IQAC is of quality assurance, planning and monitoring –

- \* Academic audit is done by consolidating the feedback response from students, parents and stakeholders.
- \* It promotes the use of technology to enhance teaching and learning
- \* It introduces the various quality enhancing programs in compliance with the vision and mission of the college.
- \* A strict check is exercised on the committees with responsible task.

**13. Placement Report**

Describes the college's placement cell activities, placement rate and salary statistics, and lists major employers and sectors of employment (disaggregated by gender and course studied). Profiles successful alumni and identifies emerging placement trends.

**Activities of Placement Cell**

S.no.	Name of the activity	Name of the Resource Person/ agency	Date & Duration
1	-	-	-

**Placement Details**

S.no.	No. of Students Selected	List of employers/companies	Salary Package
1	-	-	-

**Alumni Profile**

S.no.	Name of Alumni	Employment status	Name of the
-------	----------------	-------------------	-------------

			organisation
1	Kiran Sapda	Mahindra & Mahindra Co. Pune	Working Manager
2	Gajanan Kamle	Asstt. Teacher	Govt. H.S.S. Mangurali
3	Prerna Somkuvar	Asstt. Branch Manger	Dena Bank Bhopal
4	Ravi Kalamdhad	Computer Engineer	U.K. London
5	Vishal Junankar	Cleark	Airport Nagpur
6	Vijay Kalamdhad	Asstt. Professor	Govt. P.G. College Chhindwara H.E. M.P.
7	Priyanka Kalbhut	P.O.	Maharastrara Bank Pandhurna
8	Satish Bagde	Guest Faculty	Pandhurna College
9	Amar Kamde	Constable	B.S.F. Badmer Raj.
10	Sumit Soni	Constable	B.S.F. Raipur
11	Radhshyam Paradkar	Sainik	Army

#### 14. Innovations and Best Practices

##### Academic Innovations –

- \* Uniform is introduced to make the best possible use of academic environment and to have a look-alike environment.
- \* Smart Classes are in use for UG & PG classes and other academic deliverance
- \* Power point presentation, quizzes, classroom best assignments awards creating writing competition.
- \* Excursions, field visits, are introduced for the active involvement of the student and a close interaction between the teacher and the tautht is ensured and cemented.

##### Innovation in Administration –

- \* Monitoring is done through CCTV cameras
- \* Time bound work is ensured and displayed
- \* Information imparted to the staff through electronic devices
- \* All administrative work is computerized (use of software Tally)
- \* CM helpline functional for online grievances.

#### 15. SWOC Analysis (strength , weaknesses, Opportunity and Challenges

##### Strength –

- The one and only Co-ed College in the Pandhurna District Chhindwara catering exclusively to the academic need of students.
- Qualified Faculty
- Library housing 16827 books
- Considerably good infrastructure
- Active NSS Boys & Girls unit representing at national level
- Automation of account with Tally
- Automation of College Library

**Weakness –**

- Lack of support staff
- In ratio to the number of students shortage of regular faculty
- Less space in laboratories to accommodate the increasing number of students.
- The lack of research centre resulting in the lack of research facilities.
- No job oriented syllabus.

**Opportunities –**

- Despite the lack of advance resources, the students hailing from the neighbouring areas aspire for Higher Education.
- The college provides various programs and activities under NSS, Personality Development Programs, Sports and Cultural activities.
- Vivekanand Career Counselling Cell and UGC career counselling Cell has provided skill development opportunities to the students to some extent.
- Focusing more on learner-centric classrooms for better implementation of the curriculum.
- Progression to advanced courses, particularly to girls

**Challenges –**

- Due to lack of professional/vocational courses the institution is facing challenges inviting companies for placement.
- In preparing students competent enough to face the global market scenario.
- The applied syllabus is not job oriented.
- A gap between the syllabus and a skills required by the companies.
- Getting more posts sanctioned from the government to cope with the growing number of students
- To sustain the interest of the students in general subjects.
- In increasing the participation of students in extra-curricular and co-curricular activities.
- In bringing up the attendance rate in classrooms.
- Admission to all the girl students resulting in increasing number of students each year

## 16. Looking Ahead Future Plans

Lays out the college's priorities and goals over the coming year. Describes key initiatives planned, what each initiative is expected to achieve, and how it will contribute to the college's long term development.

### Key Initiatives Planned/ implemented

S. No	Head (administrative/ academic, etc)	Nature of proposal	Expected Outcome
1	Academic	To introduce Autonomy, And To extended 22 class rooms by <b>RUSA.World Bank IDP project</b> excepted.	Self dependent in examination
2	Academic	To introduce M.Sc in Physics in Science Subject and modify 6 science labs into high-tech labs	Most of the students will be inclined to research work
5	Academic	To Start Job oriented courses under self financing scheme	Employment for students

## 17. Appendix: Institutional Performance Data and Financial Reports

Provides key data on the institution and its performance, including achievement against strategic plan targets and financial reports. This section is mandatory. All data fields must be completed, in the format and as per the instructions attached.

## Part II

Appendix: Institutional Performance Data and Financial Reports

(all part II data kindly fill in attached excel sheet )

### 1. Sanctioned seats and enrolment

(a) Sanctioned Seats					
	SC	ST	Other Reserved Categories	General	Total
Undergraduate	<b>119</b>	<b>142</b>	<b>544</b>	<b>21</b>	<b>826</b>
Postgraduate	<b>42</b>	<b>38</b>	<b>209</b>	<b>17</b>	<b>306</b>
PhD					

Data Source: AISHE

(b) Enrolment							
		Undergraduate			Postgraduate		PhD
		Year 1	Year 2	Year 3	Year 1	Year 2	
SC	Male	19	20	14	07	02	
	Female	29	18	19	22	10	NA
ST	Male	23	19	08	06	05	
	Female	36	32	24	19	08	NA
Other Reserved Categories	Male	65	49	38	19	13	
	Female	144	126	120	122	55	NA
General	Male	04	02	02	0	01	
	Female	04	04	07	09	06	NA
Total	Male	<b>111</b>	<b>90</b>	<b>62</b>	<b>32</b>	<b>21</b>	
	Female	<b>213</b>	<b>180</b>	<b>170</b>	<b>172</b>	<b>79</b>	NA

Data Source: AISHE

Number of sanctioned seats by discipline group and enrolment in the 1 <sup>st</sup> year as on August 30 <sup>th</sup> [current year]				
Discipline Group	Undergraduate		Postgraduate	
	Sanctioned Seats	Enrolment	Sanctioned Seats	Enrolment
Arts	150	80	140	43
Commerce	85	38	40	23
Science	210	201	150	140

Data Source: AISHE

## 2. Transition and on-time graduation

(a) Transition from the 1 <sup>st</sup> year to the 2 <sup>nd</sup> year (Undergraduate)				
		Number of students admitted to the 1 <sup>st</sup> year in [the previous academic year] (*)	Of (*), the number of students currently enrolled in the 2 <sup>nd</sup> year who:	
			Passed all subjects in the 1 <sup>st</sup> year	Were Allowed to Keep Terms
<b>SC</b>	Male	47	20	22
	Female	24	18	05
<b>ST</b>	Male	50	19	21
	Female	34	32	02
<b>Other Reserved Categories</b>	Male	98	49	32
	Female	158	126	27
<b>General</b>	Male	13	02	8
	Female	10	04	4
<b>Total</b>	Male	<b>208</b>	<b>90</b>	<b>83</b>
	Female	<b>226</b>	<b>180</b>	<b>38</b>

Data Source: AISHE, examination results declared by [affiliating university/autonomous college]



(a) Transition from the 1 <sup>st</sup> year to the 2 <sup>nd</sup> year (Postgraduate)				
		Number of students admitted to the 1 <sup>st</sup> year in [the previous academic year] (*)	Of (*), the number of students currently enrolled in the 2 <sup>nd</sup> year who:	
			Passed all subjects in the 1 <sup>st</sup> year	Were Allowed to Keep Terms
SC	Male	23	02	17
	Female	15	10	4
ST	Male	29	05	19
	Female	26	08	12
Other Reserved Categories	Male	46	13	28
	Female	85	55	24
General	Male	7	01	4
	Female	15	06	6
Total	Male	<b>105</b>	<b>21</b>	<b>68</b>
	Female	<b>141</b>	<b>79</b>	<b>46</b>

Data Source: AISHE, examination results declared by [affiliating university/autonomous college]

(b) On-time graduation (Undergraduate)			
		Number of students admitted to the 1 <sup>st</sup> year in [year t-3] (*)	Of (*), the number of students who passed all final year examinations for the previous academic year
SC	Male	19	14
	Female	17	11
ST	Male	15	09
	Female	20	16
Other Reserved Categories	Male	55	38
	Female	122	95
General	Male	3	2
	Female	3	2
Total	Male	<b>92</b>	<b>63</b>
	Female	<b>162</b>	<b>124</b>

Data Source: AISHE, examination results declared by [affiliating university/autonomous college]

(b) On-time graduation (Postgraduate)			
		Number of students admitted to the 1 <sup>st</sup> year in [year t-2] (*)	Of (*), the number of students who passed all final year examinations in the current year
SC	Male	8	6
	Female	15	12
ST	Male	3	2
	Female	25	19
Other Reserved Categories	Male	44	35
	Female	77	65
General	Male	1	1
	Female	6	4
Total	Male	<b>56</b>	<b>44</b>
	Female	<b>123</b>	<b>100</b>

Data Source: AISHE, examination results declared by [affiliating university/autonomous college]

### 3. Faculty and administrative staff in position and training

(a) Faculty and administrative staff in position as on 30 <sup>th</sup> September, [current year]							
		Reserved					Un-reserved
		SC	ST	MP Residents	Females	Others OBC	
Assistant Professor	Sanctioned						
	Filled (Regular)	<b>0</b>	<b>01</b>	<b>All</b>	<b>02</b>	<b>00</b>	<b>02</b>
	Filled (Contract)	<b>01</b>	<b>02</b>	<b>All</b>	<b>06</b>	<b>07</b>	<b>01</b>
	Guest Lecturers	<b>03</b>	<b>0</b>	<b>All</b>	<b>04</b>	<b>05</b>	<b>02</b>
Associate Professor	Sanctioned	<b>N.A.</b>	<b>N.A.</b>	<b>N.A.</b>	<b>01</b>	<b>N.A.</b>	<b>01</b>
	Filled (Regular)	<b>N.A.</b>	<b>N.A.</b>	<b>N.A.</b>	<b>01</b>	<b>N.A.</b>	<b>01</b>
	Filled (Contract)	N.A.	N.A.	N.A.	N.A.	N.A.	N.A.
	Guest Lecturers	N.A.	N.A.	N.A.	N.A.	N.A.	N.A.
Professor	Sanctioned	N.A.	N.A.	N.A.	N.A.	N.A.	N.A.
	Filled (Regular)	N.A.	N.A.	N.A.	N.A.	N.A.	N.A.
	Filled (Contract)	N.A.	N.A.	N.A.	N.A.	N.A.	N.A.
	Guest Lecturers	N.A.	N.A.	N.A.	N.A.	N.A.	N.A.
Admin. Staff	Sanctioned						

(all)	Filled (Regular)	00	00	All	01	00	00
	Filled (Contract)	-	-	-	-	-	-
Accountant	Sanctioned						
	Filled (Regular)	0	0	0	0	0	0
	Filled (Contract)						

Data Source: AISHE

(b) Training of faculty and administrative staff between October 1 <sup>st</sup> [previous year] to September 30 <sup>th</sup> [current year]				
		Leadership and management training	Training in the area of academic specialisation	Other training
Assistant Professor	Number trained-06	Nil	Orientation course -06 and refresher course-05	
	Avg. number of days		28 day and 21 day	
Associate Professor	Number trained	N/A	N/A	N/A
	Avg. number of days	N/A	N/A	N/A
Professor	Number trained-01	N/A	N/A	N/A
	Avg. number of days	N/A	N/A	N/A
Administrative Staff (all)	Number trained-0	N/A	NA	N/A
	Avg. number of days	N/A	NA	N/A
Accountant	Number trained-0	N/A	N/A	N/A
	Avg. number of days	N/A	N/A	N/A

Data Source: Compiled from training certificates submitted by faculty/administrative staff

(c) Faculty qualifications as on 30 <sup>th</sup> September, [2017 Current Year]					
		PhD	Postgraduate	Undergraduate	Others
Assistant Professor	Regular	01	06	-	-
	Contract	-	17	-	-
	Guest Lecturers	06	14	-	-
Associate Professor	Regular	02	-	-	-
	Contract	-	-	-	-
	Guest Lecturers	-	-	-	-
Professor	Regular	-	-	-	-
	Contract	-	-	-	-
	Guest Lecturers	-	-	-	-

Data Source: AISHE

#### 4. Student support services

(a) Financial support received (from all sources) by students in the college between October 1 <sup>st</sup> [previous year] to September 30 <sup>th</sup> [current year]							
		Undergraduate		Postgraduate		PhD	
		Number	Average Value (Rs.)	Number	Average Value (Rs.)	Number	Average Value (Rs.)
SC	Male	Each	8000	Each	10500	-	-
	Female	Each	8000	Each	10500	-	-
ST	Male	Each	8000	Each	10500	-	-
	Female	Each	8000	Each	10500	-	-
General	Male	Each	5900	Each	5900	-	-
	Female	Each	5900	Each	5900	-	-
Total	Male	-	-	-	-	-	-
	Female	-	-	-	-	-	-

Data Source: AISHE

(a) Financial support received, from the DHE, by students in the college between October 1 <sup>st</sup> [previous year] to September 30 <sup>th</sup> [current year]							
		Undergraduate		Postgraduate		PhD	
		Number	Average Value (Rs.)	Number	Average Value (Rs.)	Number	Average Value (Rs.)
SC	Male	45	560572	-	-	-	-
	Female	73	909372	NIL	NIL		
ST	Male	36	422286	-	-	-	-
	Female	85	997065	NIL	NIL		
General	Male	-	-	-	-	-	-
	Female	-	-	NIL	NIL		
Total	Male	81	982858	-	-	-	-
	Female	158	1906437	NIL	NIL		

Data Source: College records, DHE

(b) Hostel occupancy as on 30 <sup>th</sup> September, [Current Year] (all hostels)		
<u>Capacity</u>		Number of residents
Males:		
Females:		
SC	Male	NIL
	Female	NIL
ST	Male	NIL
	Female	NIL
General	Male	NIL
	Female	NIL
Total	Male	NIL
	Female	NIL

Data Source: Hostel register verified against fee receipts on record

(c) Hostel occupancy as on 30 <sup>th</sup> September, [Current Year] (girls only hostels opened after _____)	
<u>Capacity</u>	Number of residents
SC	NIL
ST	NIL
General	NIL
Total	NIL

Data Source: Hostel register verified against fee receipts on record

## 5. Examination Results

(a) Examination results for [previous academic year] (undergraduate)											
		SC		ST		Other Reserved Categories		General		Total	
		M	F	M	F	M	F	M	F	M	F
1 <sup>st</sup> year	Appeared	9	14	11	19	90	124	8	9	118	166
	1 <sup>st</sup> Div	-	02	01	05	16	22	2	2	19	31
	2 <sup>nd</sup> Div	05	08	06	12	68	87	5	7	84	114
	3 <sup>rd</sup> Div	02	02	03	-	05	15	1	-	11	17
2 <sup>nd</sup> year	Appeared	04	08	06	10	83	129	03	07	96	154
	1 <sup>st</sup> Div	01	02	03	-	12	08	-	02	16	13
	2 <sup>nd</sup> Div	03	06	01	06	52	104	02	04	58	120
	3 <sup>rd</sup> Div	-	-	01	02	11	06	-	-	12	08
3 <sup>rd</sup> year	Appeared	02	04	05	06	36	50	03	04	46	64
	1 <sup>st</sup> Div	-	02	-	-	06	12	-	02	06	16
	2 <sup>nd</sup> Div	01	02	04	05	24	34	02	02	31	43
	3 <sup>rd</sup> Div	-	-	-	01	03	02	-	-	03	03

Data Source: AISHE, Examination results declared by [affiliating university/autonomous college]

(a) Examination results for [previous academic year] (postgraduate)											
		SC		ST		Other Reserved Categories		General		Total	
		M	F	M	F	M	F	M	F	M	F
1 <sup>st</sup> year	Appeared	02	02	-	04	20	43	02	08	24	57
	1 <sup>st</sup> Div	01	01	-	02	03	06	01	03	05	12
	2 <sup>nd</sup> Div	-	-	-	02	15	35	01	04	16	41
	3 <sup>rd</sup> Div	-	-	-	-	-	-	-	-	-	-
2 <sup>nd</sup> year	Appeared	Result Awaited									
	1 <sup>st</sup> Div										
	2 <sup>nd</sup> Div										
	3 <sup>rd</sup> Div										

Data Source: AISHE, Examination results declared by [affiliating university/autonomous college]

## 6. Placement and student tracking

(a) Placement and Tracking of Students who graduated in [previous academic year] (Undergraduate)						
		Number of students who graduated in [the previous academic year] (*)	Of (*), the number of students who were successfully tracked and are:			
			Employed / Self-employed	In education/ training	Unemployed	Not in the labour force
SC	Male	14	7	2	3	2
	Female	17	3	7	6	1
ST	Male	11	4	2	3	2
	Female	19	2	10	6	1
General + OBC	Male	49	18	12	14	5
	Female	119	21	32	52	14
Total	Male	74	29	16	20	9
	Female	155	26	49	64	16

Data Source: Records of the college placement cell

(b) Placement and Tracking of Students who graduated in [previous academic year] (Postgraduate)						
		Number of students who graduated in [the previous academic year] (*)	Of (*), the number of students who were successfully tracked and are:			
			Employed/ Self-employed	In education/ training	Unemployed	Not in the labour force
SC	Male	5	2	1	1	1
	Female	8	3	2	2	1
ST	Male	1	0	0	1	0
	Female	3	1	1	1	0
Gen+ OBC	Male	19	8	4	5	2
	Female	71	28	19	14	10
Total	Male	25	10	05	7	3
	Female	82	32	22	17	11

Data Source: Records of the college placement cell

## 7. PhDs Awarded

Number of PhDs awarded between October 1 <sup>st</sup> [previous year] to September 30 <sup>th</sup> [current year]	
Discipline Group	Number
Arts	NIL
Commerce	
Criminology and Forensic Science	
Cultural Studies	
Defence Studies	
Design	
Disability Studies	
Education	
Fashion Technology	
Fine Arts	
Fisheries Science	
Foreign Languages	
Gandhian Studies	
Home Science	
Indian Languages	
IT & Computer	
Journalism and Mass Communication	
Law	
Library and Information Science	
Linguistics	
Management	
Marine Science and Oceanography	
Oriental Learning	
Physical Education	
Religious Studies	
Science	
Social Science	
Social Work	
Women Studies	
Literature	
Other	
All disciplines	

Data Source: AISHE



## 8. Research and consultancy

Revenue generated through externally funded research and consultancies over [previous financial year]		
Discipline Group	Number of active projects	Total Revenue Generated (Rs. lakhs)
Arts	NIL	NIL
Commerce		
Criminology and Forensic Science		
Cultural Studies		
Defence Studies		
Design		
Disability Studies		
Education		
Fashion Technology		
Fine Arts		
Fisheries Science		
Foreign Languages		
Gandhian Studies		
Home Science		
Indian Languages		
IT & Computer		
Journalism and Mass Communication		
Law		
Library and Information Science		
Linguistics		
Management		
Marine Science and Oceanography		
Oriental Learning		
Others / Inter-disciplinary		
Physical Education		
Religious Studies		
Science		
Social Science		
Social Work		
Veterinary and Animal Sciences		
Women Studies		
All disciplines		

Data Source: College/university records

Number of papers published in peer-reviewed journals between October 1 <sup>st</sup> [previous year] to September 30 <sup>th</sup> [current year]			
Discipline Group	Number of papers published		Number of published papers through cross-institute research collaboration
	International Journals	National Journals	
Arts	Nil	Nil	-
Commerce	Nil	Nil	-
Home Science	Nil	Nil	-
Physical Education	Nil	Nil	-
Science	Nil	Nil	-
All disciplines	Nil	Nil	

Date Source: College records based on published papers submitted by faculty

### 9. NAAC accreditation and UGC autonomy

	Date of Application (LOI & SSR submitted)	Date on which accreditation was received	Grade	Valid till
<b>1<sup>st</sup> Cycle</b>	2007	31/03/2007	C++	31/03/2012
<b>2<sup>nd</sup> Cycle</b>	18/9/15 17/12/15	16/09/2016	B	15/09/2022

Date of submission of the Annual Quality Assurance Report for the current year:

AQAR for the current year has not been submitted as yet.

Does the college have currently valid UGC autonomy? **No**.

If yes, by order number \_\_\_\_\_, dated \_\_\_\_\_.

## 10. Institutional Trends

Variable	Baseline Value	Year 1	Year 2	Year 3	Year 4	Current Year
Percentage of sanctioned seats in the 1 <sup>st</sup> year filled (undergraduate, all categories)	445	90%	73%	60%		
Percentage of sanctioned seats in the 1 <sup>st</sup> year filled (postgraduate, all categories)	330	80%	69%	NIL	NIL	
Transition rate from the 1 <sup>st</sup> year to the 2 <sup>nd</sup> year (undergraduate, all categories)			60%	49%	NIL	
On-time graduation rate (undergraduate, all categories)			60%	49%	NIL	
Transition rate from the 1 <sup>st</sup> year to the 2 <sup>nd</sup> year (post graduate, all categories)	330	90%	75%	NIL	NIL	
On-time graduation rate (postgraduate, all categories)			75%	NIL	NIL	
Regular faculty in position rate (all levels, reserved categories)	19+1( PRINCIPAL)	SC-1(5%)	ST-2(11%)	OBC-02(11%)		
Regular faculty in position rate (all levels, unreserved categories)		GEN-1 (5%)				
Percentage of regular faculty with PhDs (all levels)		16%				
Employment rate of graduates from the previous academic year (undergraduate, all categories)		0.0052 %	0.0049 %			
Employment rate of graduates from the previous academic year (postgraduate, all categories)		0.039%				
Percentage of total revenue generated through externally funded research		NIL				
Number of papers published in peer-reviewed, international journals		Nil				

## 11. Financial Reports

Name and registration number of the auditor :

**SHRI PATEL MADAN MALPANI (REG. NO- 108950 )**

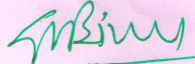
Number of audit observations recorded by the auditor **05**

Number of audit responses found satisfactory, as certified by the project directorate AGMP.

Certified audit reports as per the standard Chart of Accounts to be attached.

## 12. All India Survey of Higher Education

Date on which all applicable fields of the Data Collection Format for the All India Survey of Higher Education were completed and submitted - 28/12/2017



हस्ताक्षर  
प्राचार्य  
Principal  
Govt. Science College  
Pandhurna (M.P.)

-----